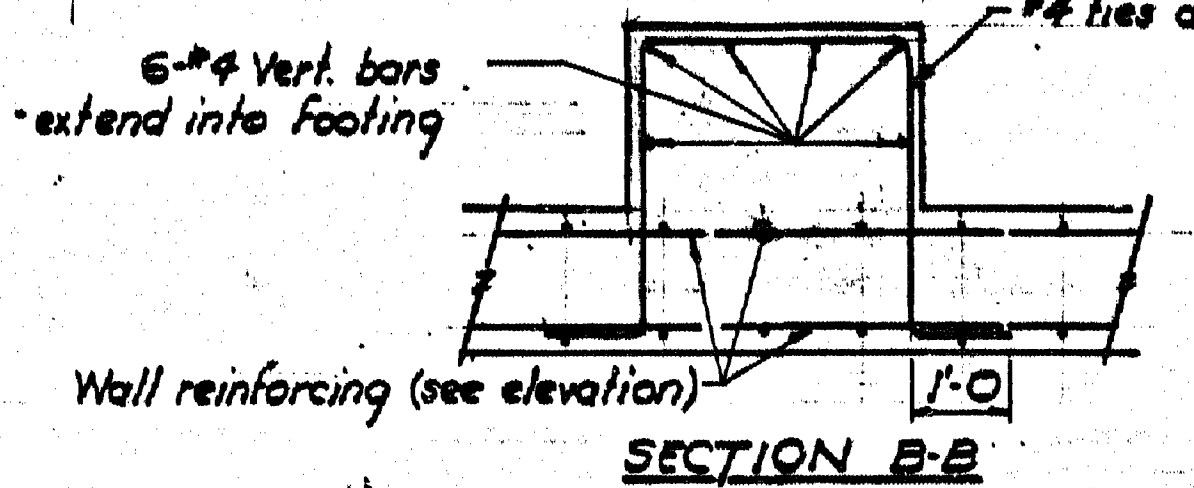
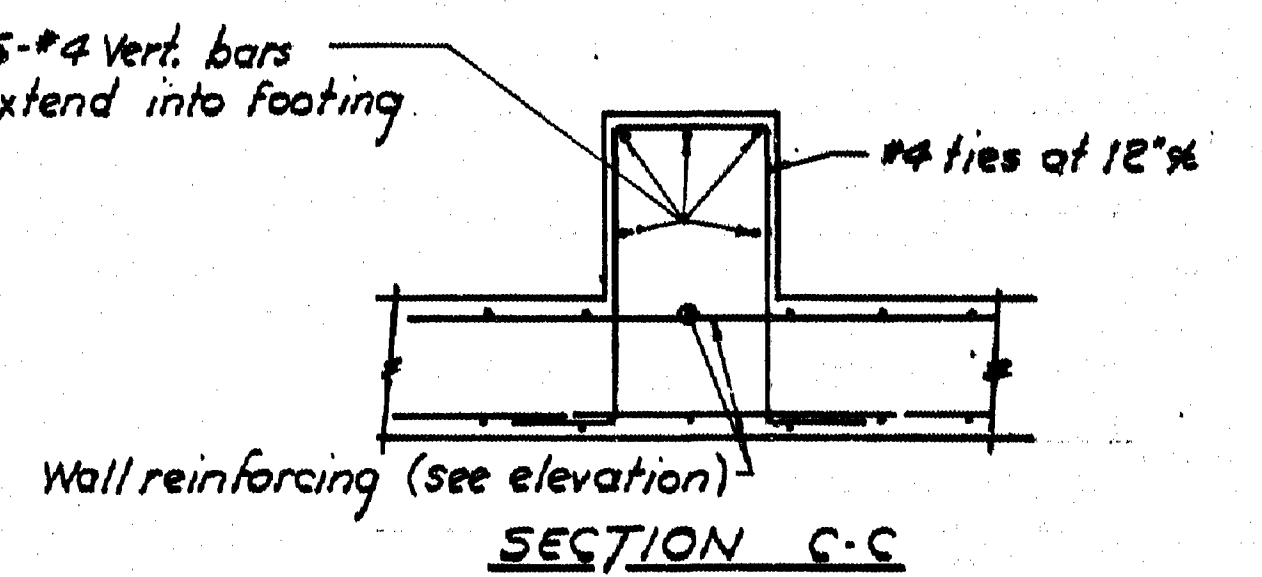
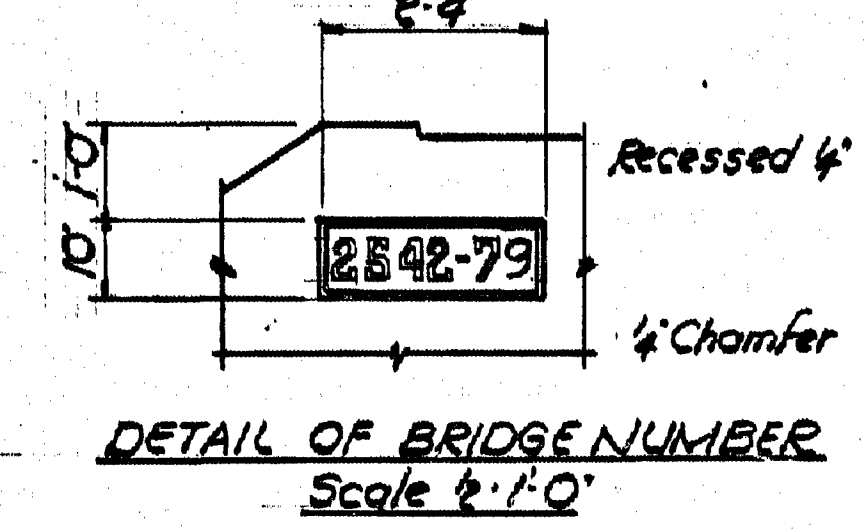


- NOTES**
- 1- All concrete to be Class A except as noted.
 - 2- A continuous horizontal drainage course of coarse gravel to be placed at drainage holes as shown.
 - 3- Footings to be carried down to elevations shown or to such lower elevations as may be ordered by the engineer.
 - 4- Reinforcing steel to be C.S.A. specification G.30.12 Grade 40.
 - 5- Reinforcing steel to have 2" min. cover except where noted otherwise.
 - 6- Top of bars for splices to be 40*d; splices to be staggered.
 - 7- Exposed edges to be chamfered 1" except as noted.

Bridge number and year of construction cast in 5" high numerals as shown. Numeral forms loaned by the Ministry of Highways.



ESTIMATED QUANTITIES
(including end posts)

Concrete		Formwork	Reinforcing Steel
Class C	Class A		
35 cu yds	28 cu yds	700 sq ft	2350 lbs

REVISIONS

NO.	DESCRIPTION	DATE	BY
D			
C			
B	As built		J.T.H. C...
A	RE-DRAWN		

GOVERNMENT OF BRITISH COLUMBIA
 MINISTRY OF TRANSPORTATION, COMMUNICATION AND HIGHWAYS
 BRIDGE ENGINEERING BRANCH

NELSON DISTRICT
 SOUTHERN TRANS - PROVINCIAL HIGHWAY
 ERIE CREEK BRIDGE 149281
 SOUTH ABUTMENT

SCALE: 1/2" = 1'-0" AND AS NOTED

RECOMMENDED: SENIOR BRIDGE DESIGN ENGINEER
 DRAWN: G.D.P. 5/27/79
 CHECKED: J.L. May/79

RECOMMENDED: DIRECTOR OF BRIDGE ENGINEERING
 APPROVED: M.G. El...
 EXECUTIVE DIRECTOR OF ENGINEERING

DRAWING NO. 2542-4B

CANCEL PRINTS BEARING EARLIER LETTER