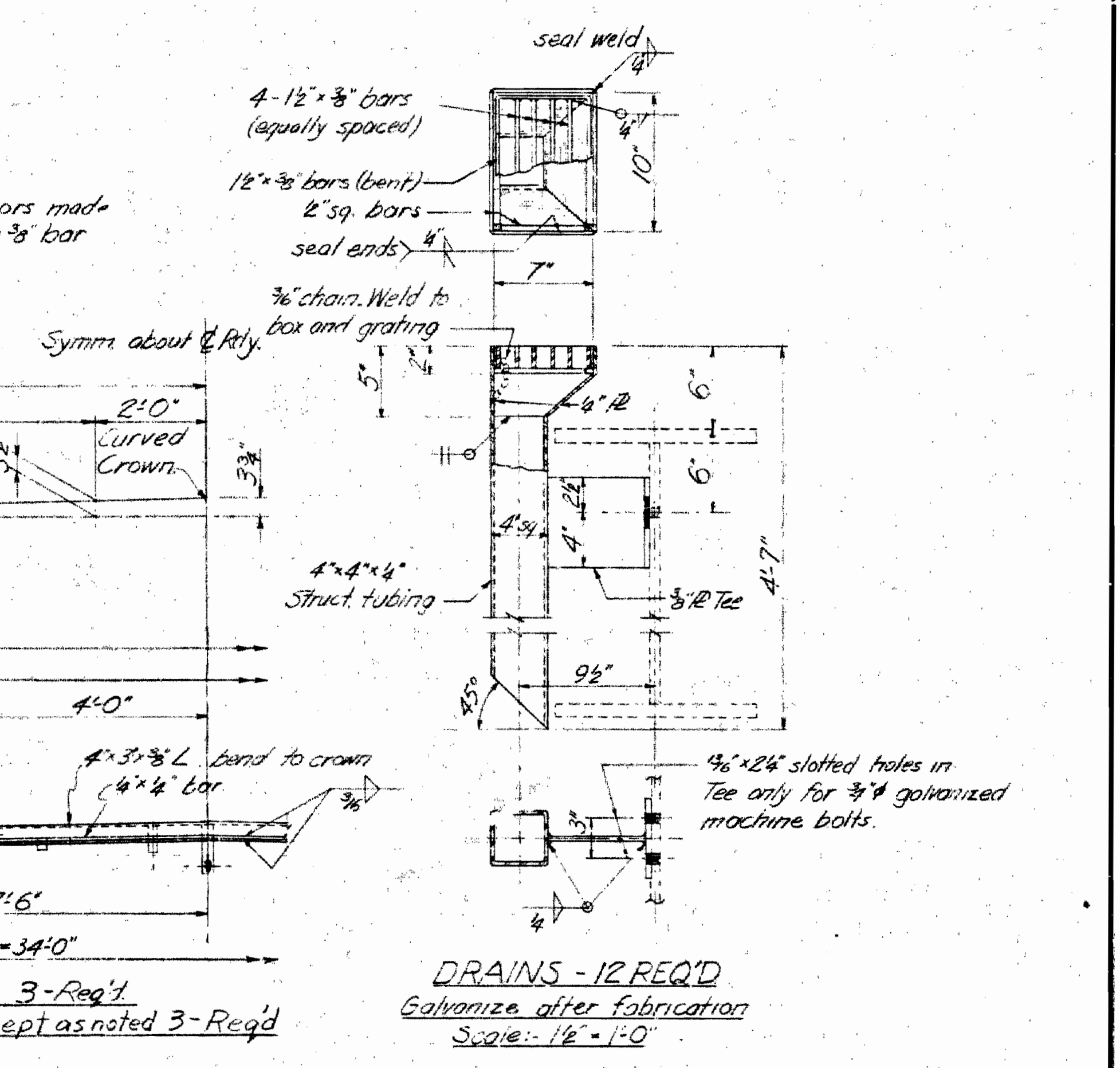
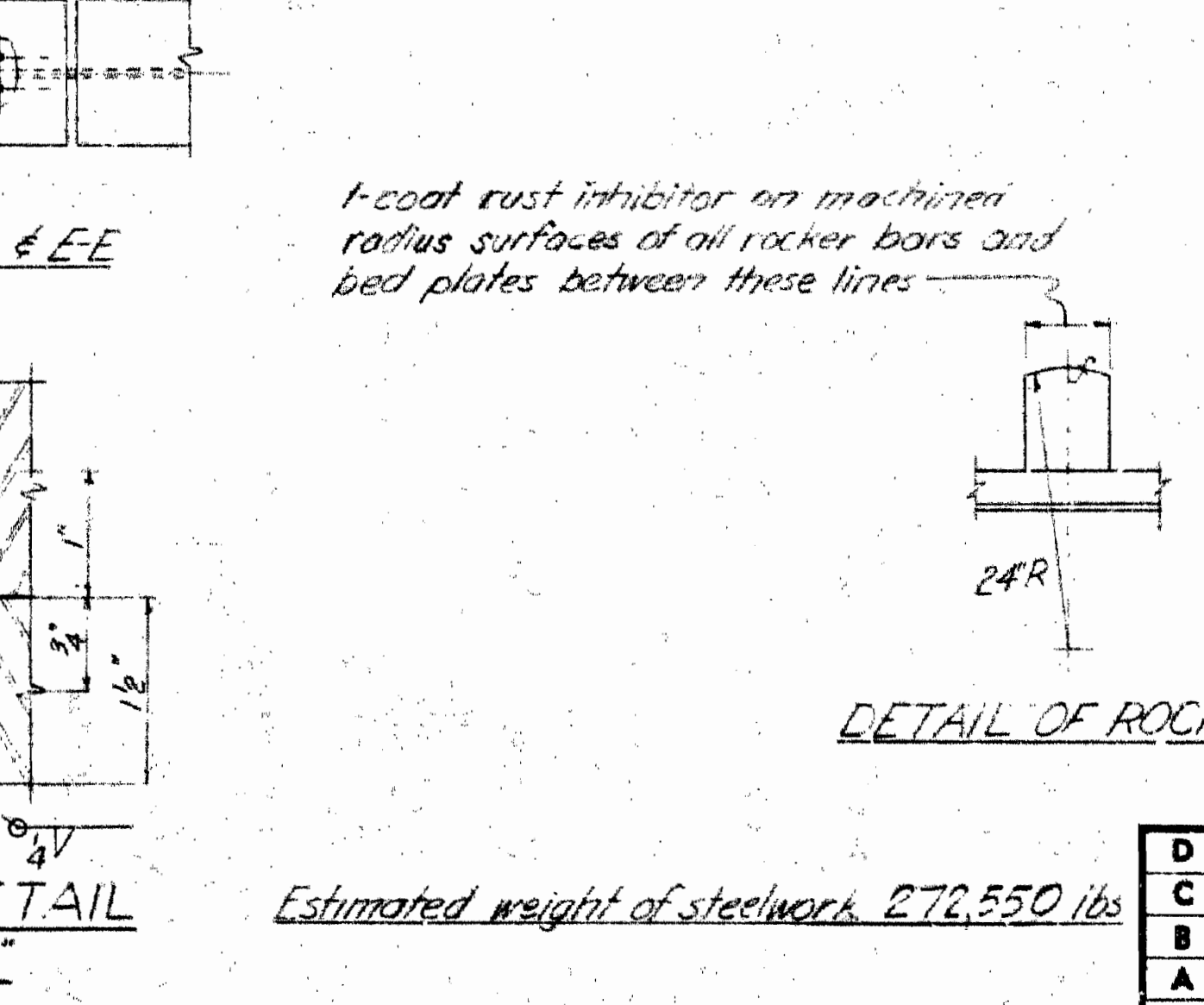
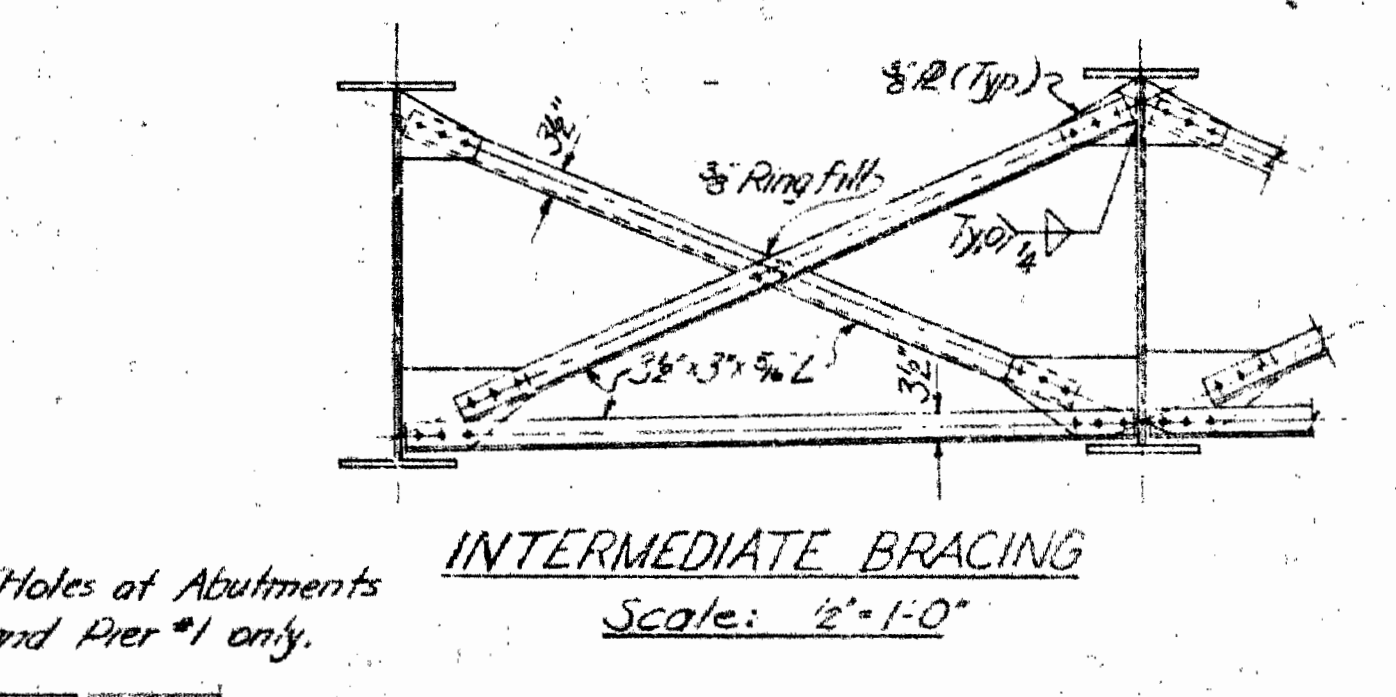
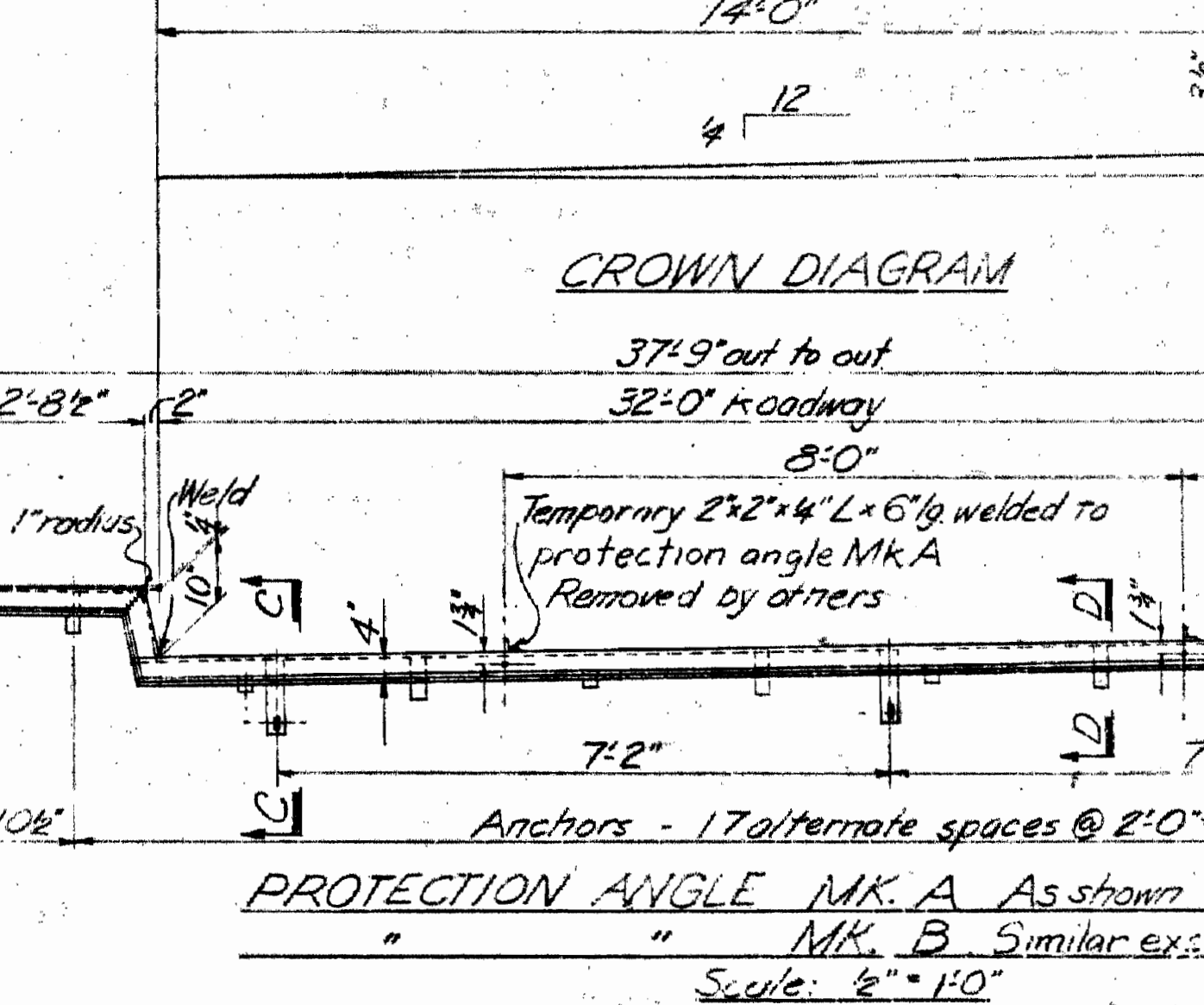
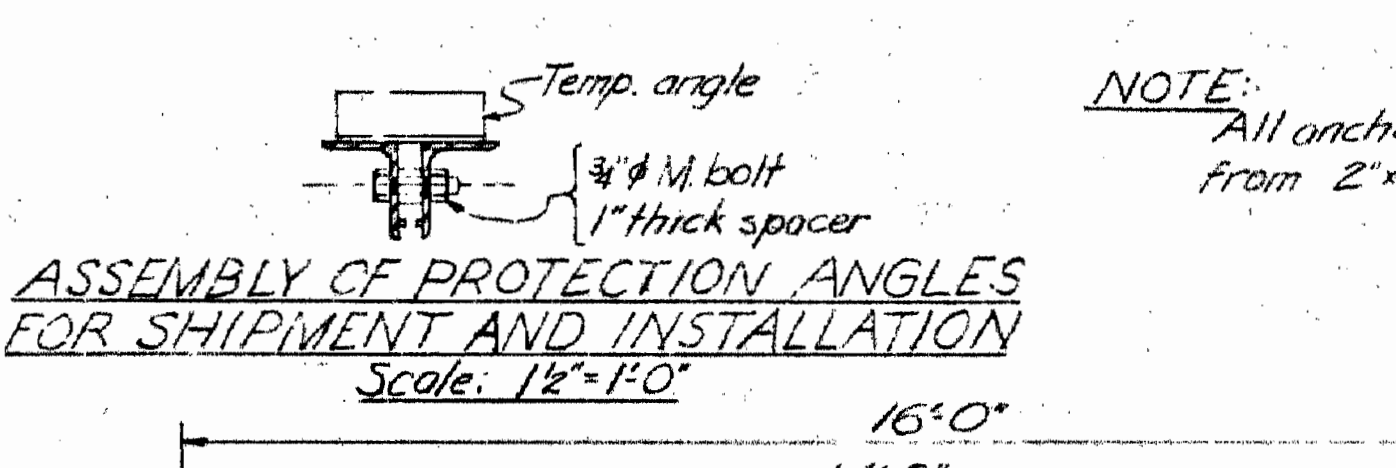
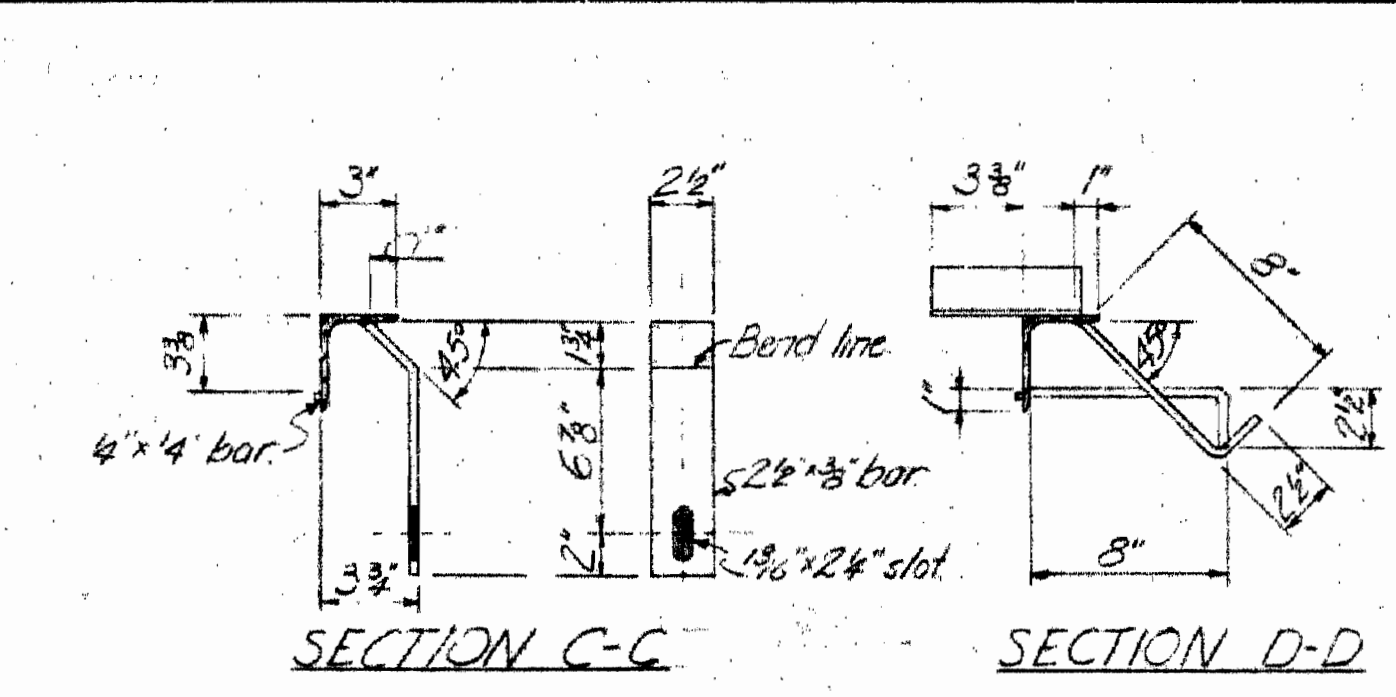
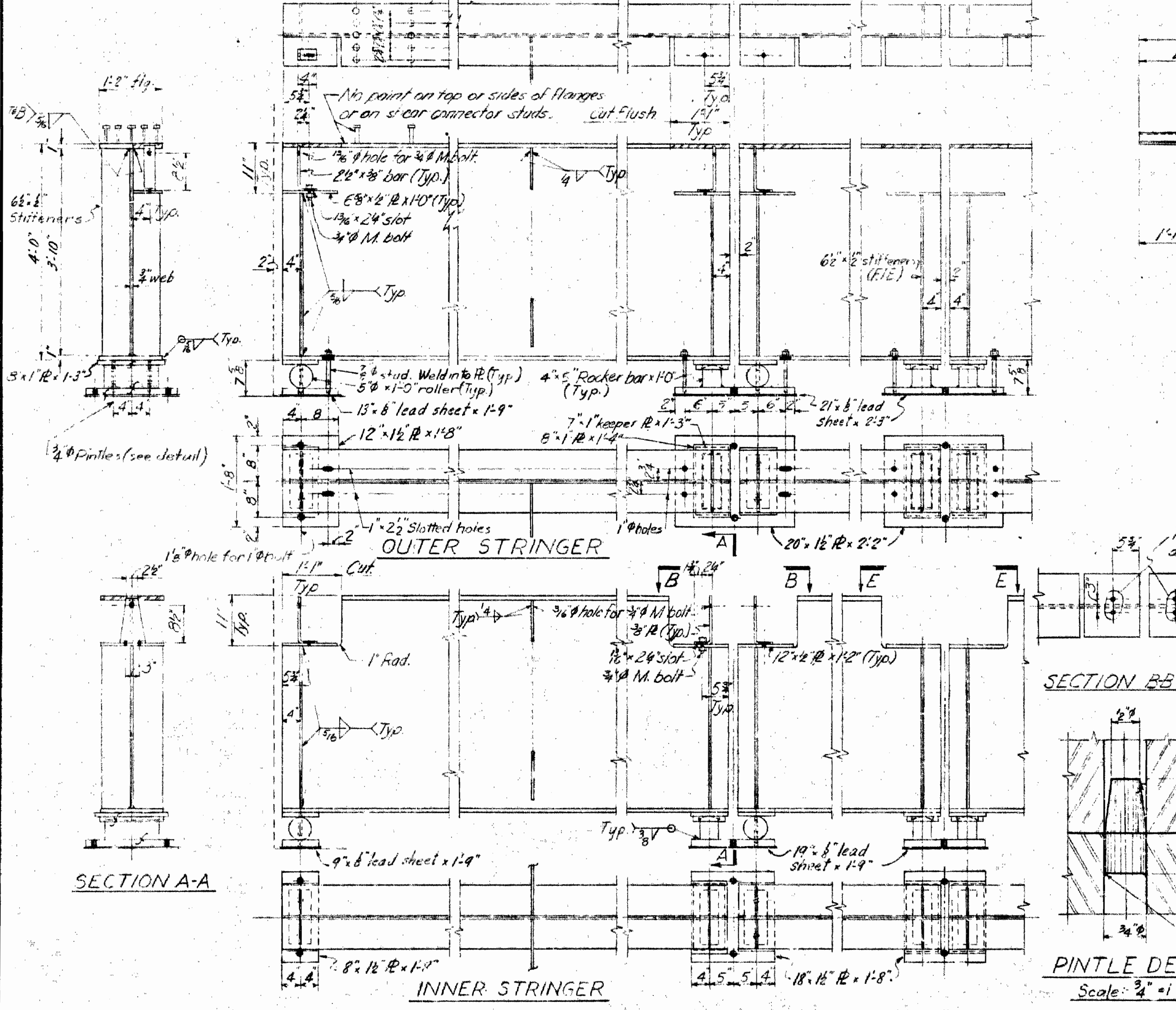


| MAXIMUM STUD SPACING | | | |
|----------------------|---------|----------------|------------|
| SPAN | 0-5'-0" | 6'-0" - 28'-0" | 28'-0" - 4 |
| | 79'-10" | 12" | 18" |
| | | 24" | |



- NOTES-
- All field connections to be 3/4" H.T. bolts except as noted.
 - Open holes 1/2" except as noted.
 - All steel for Welded Wide Flange beams shall conform to G.S.A. Specification 540.1E Expansion roller bearing plates to be of T-1 steel or equal. Expansion rollers to conform to A.S.T.M. Spec. A148-60 Grade 120-95. All other steelwork to be A.S.T.M. A36.
 - Steel for shear connector studs shall conform to A.S.T.M. Specifications A108 Grade designation 1020.
 - Paint all steelwork one coat red lead except facing surfaces and where noted otherwise. Surfaces inaccessible after erection shall be given 2 coats of field paint in accordance with Section 216-11 of Dept. of Highways General Specifications.
 - Camber at mid-point of stringers to be 2" ± 1/2"
 - Specifications = Dept. of Highways Design Specifications for Highway Bridges 1963.

FOR AS BUILT DETAILS
SEE SHOP DRAWING

BRITISH COLUMBIA DEPARTMENT OF HIGHWAYS
BRIDGE ENGINEER'S OFFICE

NEW DENVER DISTRICT
VERNON-SLOCAN HIGHWAY
CARIBOU CREEK BRIDGE
STEELWORK

| | | | |
|-----------|-----------|----------------|----------------------------------|
| DESIGN | 1/10 | 1/10 | SCALE: 1/2" = 1'-0" AND AS NOTED |
| DRAWN | 1/10 | 1/10 | APPROVED: [Signature] |
| CHECKED | R.D.B.467 | | DRAWING No. 2363-5 A |
| REVISIONS | | CHIEF ENGINEER | |

CANCEL PRINTS BEARING EARLIER LETTER.