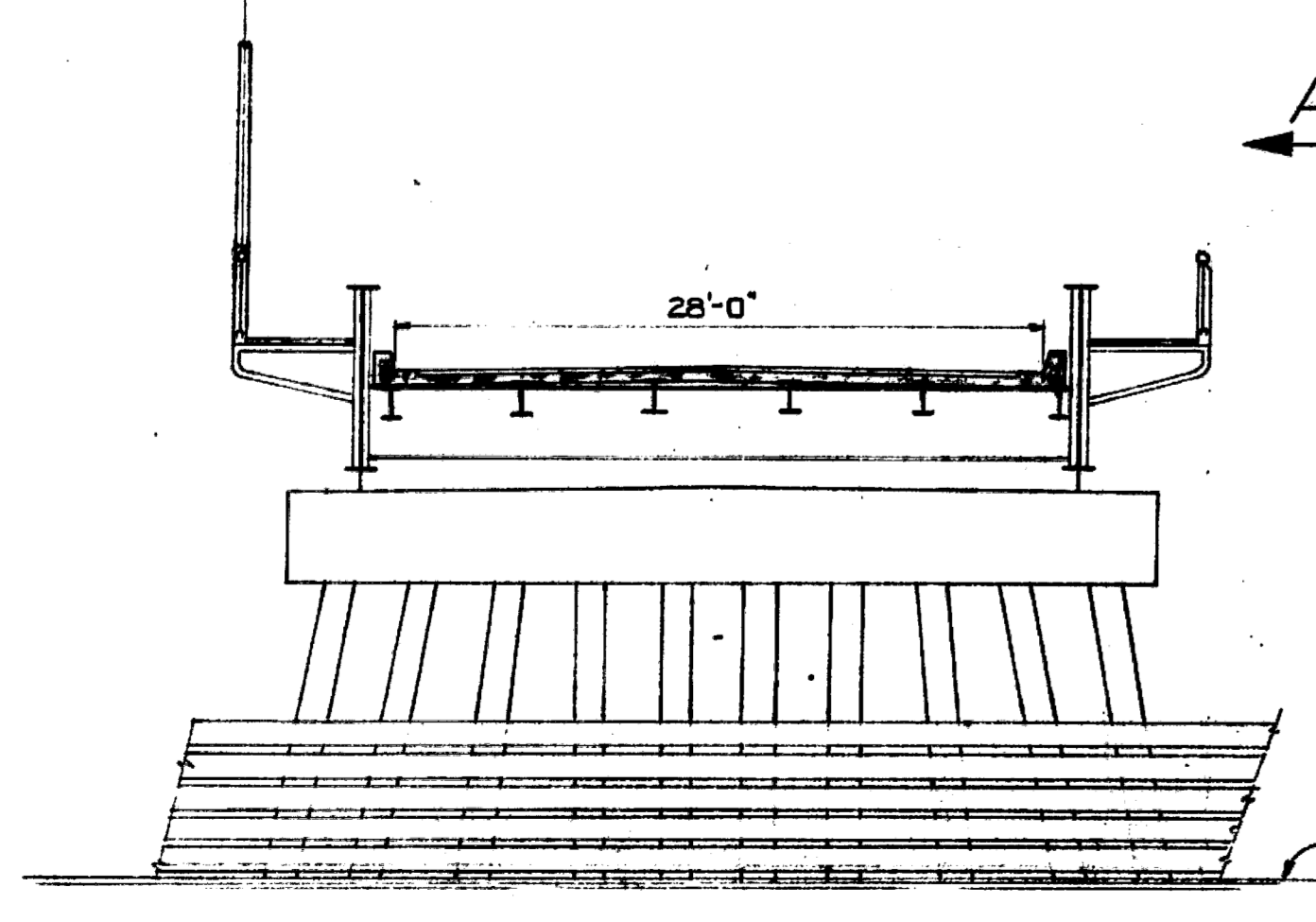
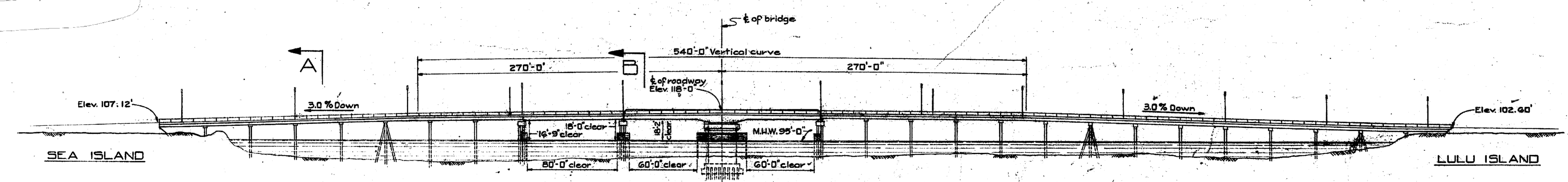
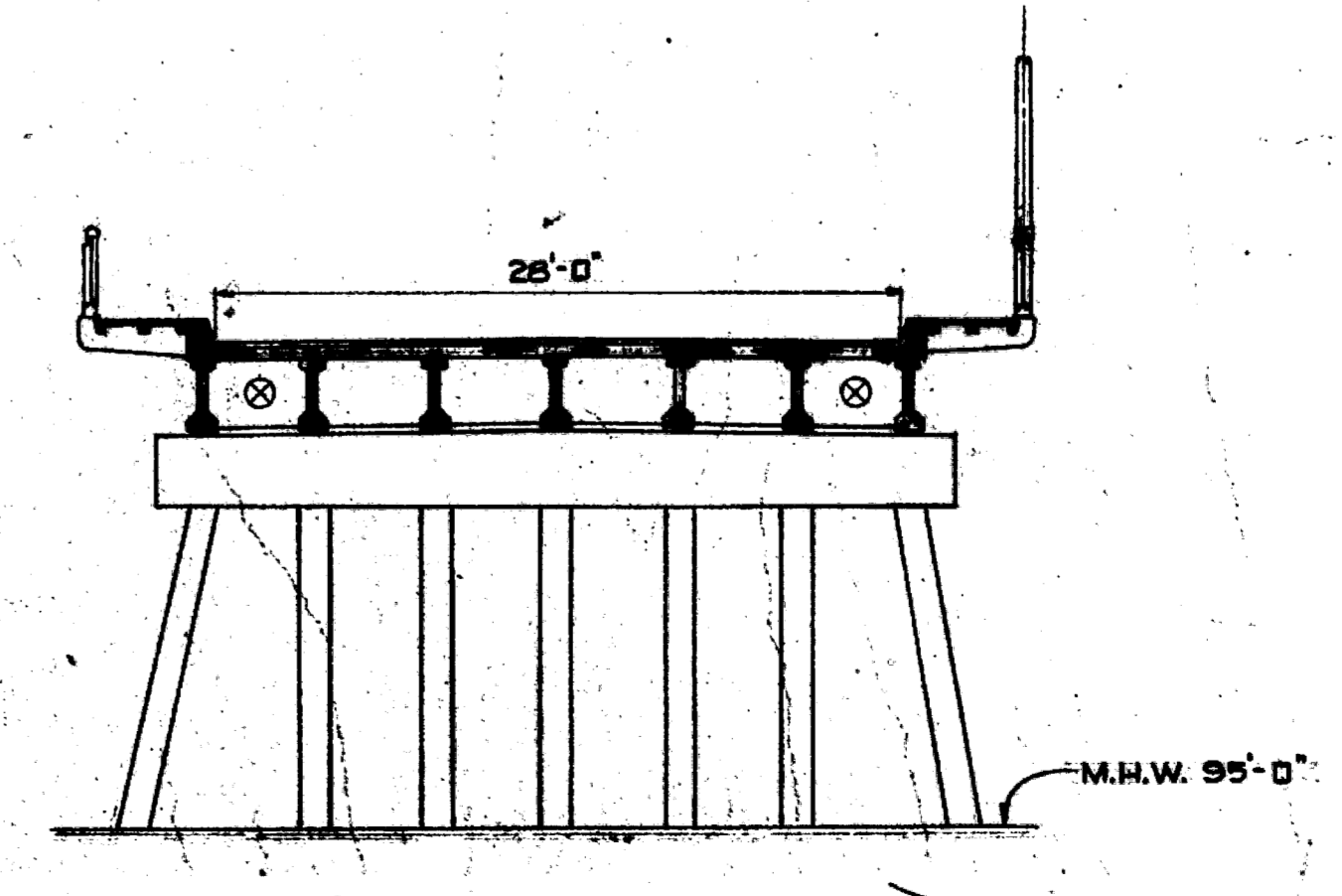


NOTE
 The basis of design shall be "Specification for Highway Bridges, 1951" of the Department of Public Works of B.C. and the Canadian Engineering Standards Association "Specifications for Movable Bridges, 1927" for H20-S16-44 loading. Provision has been made to carry 2'-12" x 46" wall, steel water lines on the approach portion of the bridge.



B-B



A-A

ELEVATION

Elevations referred to City of Vancouver datum.

REV. LETTER	DATE	DR. BY	CHK. BY	DESCRIPTION
1	Oct. 23, 1924	J.K.	E.A.G.	Bridge location as built.
2	Mar. 1, 1925	J.K.	E.A.G.	Existing water main shown.
3	Oct. 23, 1924	J.K.	E.A.G.	Note added.

OAK STREET BRIDGE
 PROVINCIAL GOVERNMENT OF BRITISH COLUMBIA
 DEPARTMENT OF PUBLIC WORKS

MIDDLE ARM BRIDGE
 GENERAL ARRANGEMENT

PHILLIPS, BARRATT AND PARTNERS
 CONSULTING ENGINEERS
 VANCOUVER, B. C.

DESTROY PRINTS OF THIS NUMBER BEARING PREVIOUS LETTERS