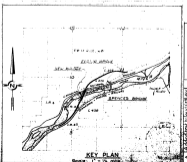
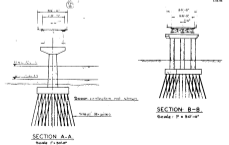
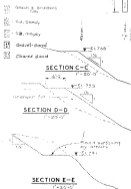
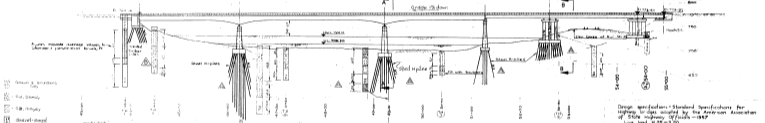


Vertical Curve Data:
 1. Type of curve or bridge span, its dimensions.
 2. Rise of floorline above
 3. Elevation of foundation line
 4. Position of piers.

Station	Profile	Grade	Vertical Curve	Notes
7000	7000.00	1.00%		
7005	7005.00	1.00%		
7010	7010.00	1.00%		
7015	7015.00	1.00%		
7020	7020.00	1.00%		
7025	7025.00	1.00%		
7030	7030.00	1.00%		
7035	7035.00	1.00%		
7040	7040.00	1.00%		
7045	7045.00	1.00%		
7050	7050.00	1.00%		
7055	7055.00	1.00%		
7060	7060.00	1.00%		
7065	7065.00	1.00%		
7070	7070.00	1.00%		
7075	7075.00	1.00%		
7080	7080.00	1.00%		
7085	7085.00	1.00%		
7090	7090.00	1.00%		
7095	7095.00	1.00%		
7100	7100.00	1.00%		
7105	7105.00	1.00%		
7110	7110.00	1.00%		
7115	7115.00	1.00%		
7120	7120.00	1.00%		
7125	7125.00	1.00%		
7130	7130.00	1.00%		
7135	7135.00	1.00%		
7140	7140.00	1.00%		
7145	7145.00	1.00%		
7150	7150.00	1.00%		
7155	7155.00	1.00%		
7160	7160.00	1.00%		
7165	7165.00	1.00%		
7170	7170.00	1.00%		
7175	7175.00	1.00%		
7180	7180.00	1.00%		
7185	7185.00	1.00%		
7190	7190.00	1.00%		
7195	7195.00	1.00%		
7200	7200.00	1.00%		



Design specifications: Standard Specifications for Highway Bridges adopted by the American Association of Highway Engineers, 1937.
 Live load H25-S20
 All elevations on this or any subsequent drawings are referred to datum datum B.M. built in Ellinger's Store, N1 778.57'

AS BUILT	6001-C-001
GOVT OF BRITISH COLUMBIA DEPT OF HIGHWAYS	C&A ENGINEERING LTD 4545 HARRIS ST VANCOUVER 18 B.C.
TRANS CANADA HIGHWAY THOMPSON RIVER CROSSING AT SPENCER BRIDGE	CONTRACT NO. 1
GENERAL LAYOUT 55457	DRAWING NO. BRIDGES: 757-21