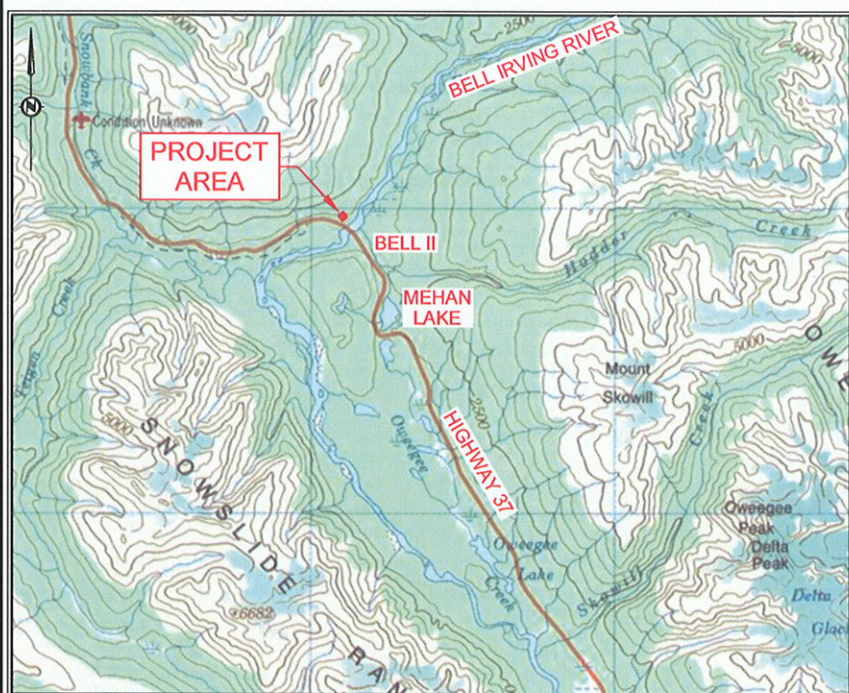


0 1 2 3km
SCALE: 1:75000



NTS BCGS MAP:
104A.071,104A.072

KEY MAP

0 1 5 10km
SCALE: 1:250000

NTS BCGS MAP:
104A.071,104A.072



MINISTRY OF TRANSPORTATION
AND INFRASTRUCTURE
GEOTECHNICAL DEPARTMENT
NORTHERN REGION



DWB Consulting Services Ltd.
1A, 1750 Quinn Street
Prince George, B.C.
V2N 1X3
Phone: (250) 562-5541 Fax: (250) 562-5561

FIGURE 1
BULKLEY-STIKINE DISTRICT
BELL IRVING II PIT
LOCATION PLAN (2010)

FILE NUMBER	PROJECT NUMBER	REG	DRAWING NUMBER	REV
		NR	1019-269-F1	A