

**FISHER CREEK BRIDGE NO. 07117 REPLACEMENT
HYDROTECHNICAL DESIGN BRIEF
MOTI PROJECT 37479-0000**



Prepared for:

BC Ministry of Transportation and Infrastructure
Northern Region
Prince George, BC

Prepared by:

Northwest Hydraulic Consultants Ltd.
North Vancouver, BC

14 April 2022 (Revised)

NHC Ref No. 3005858-09

Prepared under the direction of:




Des Goold, P.Eng. 2022-04-13
Principal

DISCLAIMER

This document has been prepared by **Northwest Hydraulic Consultants Ltd.** in accordance with generally accepted engineering practices and is intended for the exclusive use and benefit of the Province of British Columbia Ministry of Transportation and Infrastructure and their authorized representatives for specific application to the Fisher Creek Bridge No. 07117 Replacement Project. The contents of this document are not to be relied upon or used, in whole or in part, by or for the benefit of others without specific written authorization from **Northwest Hydraulic Consultants Ltd.** No other warranty, expressed or implied, is made.

Northwest Hydraulic Consultants Ltd. and its officers, directors, employees, and agents assume no responsibility for the reliance upon this document or any of its contents by any parties other than the Province of British Columbia Ministry of Transportation and Infrastructure.

TABLE OF CONTENTS

DISCLAIMER.....	i
TABLE OF CONTENTS.....	ii
LIST OF TABLES.....	ii
LIST OF APPENDICES.....	ii
1 INTRODUCTION.....	1
1.1 Design codes and references.....	1
1.2 Information provided by MoTI.....	1
1.3 Information from other sources.....	2
2 FISHER CREEK CHARACTERISTICS.....	3
2.1 Watershed and reach physical characteristics.....	3
2.2 Streamflow estimates.....	3
3 HYDRAULIC ANALYSIS OF PROPOSED WATERWAY.....	3
3.1 Hydraulic summary.....	4
3.2 Design flood level and required bridge clearance.....	5
3.3 Aggradation, degradation and scour.....	5
3.3.1 Aggradation.....	5
3.3.2 Degradation.....	5
3.3.3 Scour.....	6
3.4 Riprap protection for streambanks.....	6

LIST OF TABLES

Table 1. Summary of the hydraulic model results for the new channel and bridge.....	5
---	---

LIST OF APPENDICES

APPENDIX A	Design Criteria Sheet for Climate Change Resilience, Fisher Creek
APPENDIX B	Set of five (5) Drawings – Channel Improvements and Berms

1 INTRODUCTION

Northwest Hydraulic Consultants Ltd. (NHC) has been retained by MoTI (under Contract No. 831CS1092) to carry out a hydrotechnical assessment of Fisher Creek and develop the hydrotechnical design for the replacement of Bridge No. 07117. This structure is undersized and was damaged by the 2011 and 2016 South Peace floods.

NHC developed hydrotechnical design constraints and a preliminary waterway opening design for replacement of the Bridge in July 2012, following the 2011 Peace Flood (NHC, 2012). In 2018 NHC was asked to update the waterway design and carry out the detailed hydrotechnical design.

1.1 Design codes and references

The following design codes and reference documents form the basis of the hydrotechnical design summarized in this report:

Design Codes:

- CAN/CSA-S6-19 in conjunction with the BC MoTI Supplement to CHBDC S6-14
- BC MoTI Supplement to 2019 TAC Geometric Design Guide (2021)

BC Ministry of Transportation and Infrastructure Standards and Guidelines:

- BC MoTI Standard Specifications for Highway Construction (2020)
- Resilient infrastructure Engineering Design – Adaptation to the Impacts of Climate Change and Weather Extremes (Technical Circular T-04/19).

Hydrotechnical Design Guidelines:

- TAC Guide to Bridge Hydraulics (2001)
- Hydraulic Design of Stable Flood Control Channels (NHC, 1984)
- Developing Climate Change-Resilient Designs for Highway Infrastructure in British Columbia (Interim) (V2; EGBC, 2020)

1.2 Information provided by MoTI

The following reference drawings, reports and survey data were provided by MoTI:

- 07117 Fisher Creek Bridge; Development of Mitigation Options for Lateral Channel Instability (timeline compiled by D. Cossette, Oct. 2018)

1.3 Information from other sources

The following reference drawings, reports and survey data were obtained from other sources:

- Highway 97 crossing at Fisher Creek – Hydrotechnical assessment following the flood of June 2011 (NHC, 2012a)
- Fisher Creek Bridge No. 7117, Hydrotechnical Design Constraints for Bridge Replacement, (Ministry PEP Project No. 35153), Draft Report. (NHC, 2012)
- South Peace Flood Recovery Program, Report on the 2016 Flood Event and Regional Hydrology (NHC, 2017)
- Fisher Creek Riprap Construction 35479 (Associated Engineering, 2018)
- Ground survey and structural bridge drawings (McElhanney, 2018-19)

2 FISHER CREEK CHARACTERISTICS

2.1 Watershed and reach physical characteristics

The following information summarizes baseline physical characteristics of the watershed and the reach of the stream where the subject crossing exists.

- Watershed area to the crossing: 44.8 km²
- Maximum watershed elevation: El. 1,900 m
- Minimum watershed elevation: El. 661 m
- Elevation at crossing: El. 660.8 m
- Channel morphology at crossing: Wandering planform on alluvial fan
- Channel slope: 3.5 percent (0.35 m/ km)
- Existing Channel bottom width: 10 m to 16 m (riprap controlled)
- Bed material D₅₀: 110 mm

2.2 Streamflow estimates

Peak Flood flow estimates for Fisher Creek are based on a set of regional flood curves developed by NHC. For background on the development of the curves please refer to the *Report on the 2016 South Peace Flood Event and Regional Hydrology* (NHC, 2017). The following flow estimates were used in the design of the permanent crossing, with the future 200-year annual peak flow estimate being the basis for sizing the clear span bridge.

- 10-year annual peak flow: 62 m³/s
- 100-year annual peak flow: 149 m³/s
- 200-year annual peak flow: 173 m³/s
- 200-year design flow: 207 m³/s

The recommended design flow includes a 20 percent increase to account for the effects of climate change. A Design Criteria Sheet for Climate Change Resilience is attached as **Appendix A**.

3 HYDRAULIC ANALYSIS OF PROPOSED WATERWAY

Traditionally the waterway opening for a bridge is determined, at least in part, on the existing channel characteristics, collected survey data, hydrology and numerical modelling. In 2012, NHC established a preliminary waterway design using these methods. However, the channel of Fisher Creek within the Highway 97 reach has been affected by the undersized bridge and numerous flood recovery efforts that have occurred over its life. Consequently, a clear and consistent channel width is difficult to determine from observation and surveys, and the 2012 channel width recommended was conservatively wide as a result. NHC re-assessed the waterway width using a regime analysis, along with updated hydrology, and confirmed the results with numerical modelling. Every channel has a unique regime, though research has

shown that regime can be generally defined by a set of curves that relate the bank full width, mean depth and gradient of the channel to its dominant discharge and the D_{50} size of its bedload (NHC 1984). The 10-year annual daily maximum flow has been adopted as the channel forming flow for the regime analysis, and a high resistance to erosion has been assumed since the waterway channel will be riprap-protected.

The following paragraphs describe the recommended channel improvements and training works. A copy of design drawings is provided in **Appendix B**.

The revised waterway opening has a trapezoidal channel with a 20.5 m bottom width and 2H: 1V side slopes (Table 2). The bottom width is reduced by 4.5 m relative to the 2012 waterway width. Given the required size of the waterway channel, the magnitude of the design flow and the volume of wood debris and bedload carried by the creek, a clear span replacement bridge is favoured over a multi-span bridge. The selected option is a 37.8 m long, clear-span bridge. Channel widening and riprap protection are proposed for approximately 30 m upstream and 40 m downstream of Highway 97. The existing channel gradient will be maintained over this distance.

Training berms are recommended upstream of Highway 97 to gather flow from across the alluvial fan and guide it towards the new bridge. The main trunks of both training berms will extend upstream at angles of 30 to 35 degrees to Highway 97. The West Training Berm and East Training Berms are approximately 90 m long and 235 m long, respectively. The Training Berms will be riprap-armoured and tie to high ground (service roads) on either side of the fan, reducing the risk of a future channel avulsion.

On the west side of the alluvial fan, the West Containment Berm is a raised and riprap-protected berm extending approximately 170 m north of the Enbridge pipeline crossing. It is offset from the main channel of Fisher Creek and is intended to contain high flows within the fan area and prevent avulsions from damaging highway infrastructure farther west. The top surface of the west containment berm is 3.2 m above the adjacent minimum elevation in the Creek, providing 1 to 1.5 m of freeboard over the expected 200-year flood profile.

3.1 Hydraulic summary

A HEC-RAS (USACE 2016) model of the Fisher Creek crossing was developed using cross-sections extracted from the provided survey data. The model has been used to assess hydraulics in the creek during floods and to size the appropriate replacement structure.

A Manning's 'n' roughness coefficient of 0.05 is used for the channel upstream and downstream of the crossing – the coefficient accounts for the coarse surficial material, irregular shape of the channel and the likelihood that debris will obstruct portions of the channel during flood events. The roughness coefficient used for the left and right overbanks range from 0.1 to 0.2. The roughness coefficients cannot be calibrated because flood flows and high-water marks have not been recorded at the site.

Normal depth for slopes of 3.7 percent (0.037 m/m) and 3.3 percent (0.033 m/m) are used as boundary conditions at the upstream and downstream limits of the model, respectively.

The following table summarizes the hydraulics at the proposed replacement bridge.

Table 1. Summary of the hydraulic model results for the new channel and bridge

Peak Flow Return Period	Peak Flow (m ³ /s)	Flood Level, (El., m ¹)	Average Velocity (m/s ²)	Froude Number ²
10-year	62	661.7	2.9	1.0
100-year	149	662.4	3.8	1.0
200-Year	173	662.6	4.0	1.0
200-Year Design Flow ³	207	662.8	4.2	1.0

Notes:

1. The flood levels shown are at the upstream side of the proposed new bridge.
2. Average velocities and Froude Numbers s are average values within the hydraulic opening.
3. Includes a 20 percent increase to account for the effects of climate change.

3.2 Design flood level and required bridge clearance

MOTI standard for flood clearance is 1.5 m above the 200-year design flood level. The lowest point of the bridge soffit is at the east end of the upstream girder – the soffit elevation at that location will be 1.5 m above El. 662.8 m, or El. 664.3 m.

3.3 Aggradation, degradation and scour

3.3.1 Aggradation

Aggradation and degradation at the site will tend to be cyclical, though net long-term aggradation is expected. Larger floods in excess of a 10-year return period will mobilize significant amounts of debris and sediment (from bank scour, landslides etc.), which will form jams and cause short term aggradation of bed material in the bridge reach. Lesser, average floods in subsequent years will tend not to entrain much new sediment or debris but will rework and erode the aggraded bed material.

Even with the proposed new channel and bridge at Highway 97, the location of the highway crossing through the middle of a very active alluvial fan is not ideal, and aggradation through the crossing is expected to continue. Mechanical removal of debris and sediment may be required from time to time in order to maintain adequate clearance at the new bridge.

3.3.2 Degradation

Degradation is unlikely to occur due to the large amount of bedload supplied to the crossing. Any bed lowering will likely be offset by the aggradation trend.

3.3.3 Scour

Natural scour occurs in streams even if the channel is not constricted or controlled to a significant degree. The causes of natural scour can include: i) accelerated, deep flow along the outside of a bend; ii) lateral shifting of the channel thalweg; iii) flow alongside or impinging upon rock outcrops, debris jams, other hard points or rigid materials along the channel boundaries; and iv) sudden concentrations of flow such as at the confluence of two or more channels.

At the proposed bridge, the most likely form of natural scour will be accelerated flow along the rigid, riprap protected banks of the channel. If a debris jam forms within the waterway, the flow pattern would be similar to flow along the outside of a rigid bend or flow impinging at an angle against a rigid bank.

The 200-year natural scour elevation has been estimated using the Modified Blench procedure (TAC 2004) with the following inputs:

- Channel top width at approach and bridge waterway opening = 28.5 m
- Design flow = 207 m³/s
- Energy slope = 0.014 m/m (conservative for this scour estimate)
- D50 of bed material = 108 mm
- Z factor = 2.0 (upper range for flow along the outside of a bend where banks are rigid)

The natural scour depth is estimated to be 3.4 m below the 200-year flood level. Additionally, in the unlikely event that the bridge crossing is outflanked in the future (due to a significant blockage of the waterway), the bridge abutment piles could become exposed to scour. The riprap protection through the bridge will collapse around the piles and help limit the depth of local scour, but it is still prudent to design the abutment piles to be able to withstand exposure to the depth of natural scour.

There is no contraction or local scour potential at the bridge.

3.4 Riprap protection for streambanks

In NHC's 2012 report, 1000-kg riprap was recommended for erosion protection through the waterway. Due to concerns over being able to source riprap of that size, the size class was reduced to 500-kg, but the thickness was doubled (to 2.4 m) as compensation¹. Increasing the placement thickness of riprap is a legitimate means of increasing its stability and long-term performance, however, it appears the

¹ Reductions in riprap class size in combination with thicker placement is an approach that has also been used at several other sites in the Peace (e.g. Commotion Creek and Bissett Creek)

thickness at Fisher Creek Bridge need only be increased to 2100 mm to achieve the necessary stability (factor of safety ~ 1.2).

For the bridge opening, MoTI Class 500 kg riprap, with nominal thickness of 2.1 m is recommended. The minimum slope for erosion protection is 2H: 1V and will extend to the design water level elevation plus 0.6 m.

Riprap bank protection is recommended to extend approximately 30 m upstream and 40 m downstream of the bridge.

The East and West Training berms are outside of the channel and therefore can be protected with a lower riprap class. Class 250-kg riprap is recommended to protect the upstream face of both west and east berms.

The West Containment Berm runs parallel to and at an offset from the main channel of Fisher Creek. However, in the future it is possible that the Creek will migrate west and flow directly against the berm; therefore, Class 500-kg riprap is recommended to protect the creek-side face of the berm.

APPENDIX A

Design Criteria Sheet for Climate Change Resilience Fisher Creek

BCMoTI Design Criteria Sheet for Climate Change Resilience

Highway Infrastructure Design Engineering and Climate Change Resilience Ministry of Transportation and Infrastructure (Separate Criteria Sheet per Discipline)

Project: *Fisher Creek Bridge (07117) Replacement*
 Type of work: *Bridge Replacement (Detailed Design)*
 Location: *Highway 97; BC MoTI Northern Region*
 Discipline: *Hydrotechnical*

Design Component	Design Life or Return Period	Design Criteria + (Units)	Design Value Without Climate Change	Change in Design Value from Future Climate	Design Value Including Climate Change	Comments / Notes / Deviations / Variances
Replacement Bridge (36 m clear span)	200yr	Flow Rate (m ³ /s)	173	+20%	207	- Design Flood elevation rises by 0.2 m - 200-year average velocity increases by 0.2 m/s - Minor increase in riprap volume (~ 5%)

Explanatory Notes / Discussion:

The BC Ministry of Transportation and Infrastructure (MoTI) is intending to replace Fisher Creek Bridge No. 07117 located approximately 51 km west of Chetwynd on Highway 97. Highway 97 cuts across the middle of Fisher Creeks alluvial fan, which is a very active fan with high bedload and debris loads. There are privately operated gas pipeline crossings of Fisher Creek 130 m upstream and 75 m downstream of Highway 97. The existing bridge consists of 18.3 m long, concrete stringers supported on timber piles at the abutments and central pier. The bridge has a significantly undersized waterway opening relative to the channel width determined by regime analysis. Because of this, and the presence of a pier, the bridge traps a large amount of debris and bedload during floods, creating deep scour under the structure and a risk of avulsion upstream. The bridge was overwhelmed by flooding in both June 2011 and June 2016. MoTI's intent is to replace the existing bridge with a new, 36 m long, clear span bridge. The channel beneath the bridge will be enlarged to a minimum bottom width of 20.5 m and will have 500-kg riprap-protected banks rising at 2H: 1V. Training berms will extend diagonally upstream across the fan, tying into to both bridge abutments. The intent of the training berms is to capture all flood flow across the fan and re-direct it back towards the bridge. Northwest Hydraulic Consultants Ltd. (NHC) has been retained by MoTI under General Services Contract 831CS0995 to prepare a Hydrotechnical Design Brief for the new Fisher Creek Bridge Channel Improvements and Training Berms.

The effect of climate change on the flood hydrology for Fisher Creek has been assessed by analyzing future projections in rainfall intensity at nearby climate stations and well as future projections in streamflow for some of the larger rivers in the region (streamflow projections are not available for streams in the size range of Fisher Creek). The hydrologic impacts of climate change will be partly attributed to changes in rainfall intensity, but there are numerous other climate indicators that will be affected as well, including changes to temperature normals, and the spatial and temporal variation in precipitation throughout the year, etc.

The projected impact on rainfall intensity has been evaluated by using IDF-CC, an online tool developed by Srivastav, Schaardong, and Simonovic (2014) that applies the downscaled global circulation model(GCM)'s output to modify present intensity-duration-frequency (/OF) curves published by (ECCC)1. The IDF-CC tool produces ensemble predictions from the full suite of climate projections from Assessment Report 5 (AR5) of the United Nations Intergovernmental Panel on the Climate Change (IPCC 2014). AR5 output is produced for three Representative Concentration Pathway (RCP) scenarios (RCP 8.5, RCP 4.5 and RCP 2.6). RCP 8.5, for example, refers to the projected change in radiative forcings (+8.5 W/m²) in the year 2100 relative to pre- industrial levels. While RCP 8.5 is the

worst case scenario of greenhouse gas concentration trajectories referred to in the IPCC report, it is the general consensus by local climate change scientists that RCP 8.5 is the likely pathway given the current state of anthropogenic (human) activity.

The online IDF-CC tool also allows the user to input historical rainfall data, which can be used to generate locally relevant updated IDF curves and adjust for climate change based off the same method for the ECCC data. NHC used the IDF-CC tool to produce estimates of changes in rainfall intensities over different durations, time periods and RCPs for the BCFF Stations at Lemoray, Hudson's Hope and Noel, and the ECCC Stations at Chetwynd and Dawson Creek. The results of the analysis show that for RCP 8.5, the increase in rainfall intensities by the end of the 2151 Century could be as much as 25%.

To assess the impacts of climate change on larger rivers, NHC carried out non-stationary flood frequency analysis on the Pine River (12,000 km²) and Moberly River (1,520 km²). The projections were developed by the Pacific Climatic Impacts Consortium (PCIC). Unfortunately, there are no projections for streams of an intermediate size. The analysis results show that there is not a consistent regional signal in terms of the magnitude and direction of changes in peak flows on the larger rivers in the region. In NHC's judgement, it is prudent to assume that a maximum ensemble median percent increase similar to the Pine River (11%) will apply to other large river systems in the mountainous region of the South Peace that have physiography similar to the Pine River (i.e. Murray River, Sukunka River).

For smaller watersheds in the mountainous region, and for all watersheds on the Alberta Plateau, large floods tend to be rainfall driven as opposed to snowmelt driven. Therefore the estimated median increases in rainfall intensity should be directly applied to design flows for those streams. There should be some reduction in the percent increase in flows as watershed size increases. At this time, NHC recommends applying a 25 percent increase in the 100- and 200-year flow for the smallest watersheds (under 25 km² in size), a 15 percent increase for larger watersheds (1000's km² and larger), and a 20 percent increase for watershed sizes in between those limits. According, the 200-year design flood for Fisher Creek should incorporate a 20% increase to account for climate change. NHC recommends that 200-year peak discharge of 207 m³/s be adopted as the design discharge for the replacement structure for future phases of design. The impacts of climate change on 200-year hydraulics are noted in the table above.

For a more complete discussion of the results, please refer to NHC's 2017 report entitled: "Report on the 2016 Flood Event and Regional Hydrology".

Recommended by: Engineer of Record: Des Goold, P.Eng.

Date: April 4, 2019

Engineering Firm: Northwest Hydraulic Consultants Ltd.

Accepted by BCMoTI Consultant Liaison: _____
(For External Design)

Dan Cossette *DJ* *Apr. 4, 2019*

Deviations and Variances Approved by the Chief Engineer: _____
Program Contact: Dirk Nyland, Chief Engineer BCMoTI

APPENDIX B

Set of Five (5) Drawings
Channel Improvements and Berms

BRITISH COLUMBIA
 Ministry of Transportation & Infrastructure
 Southern Interior Region

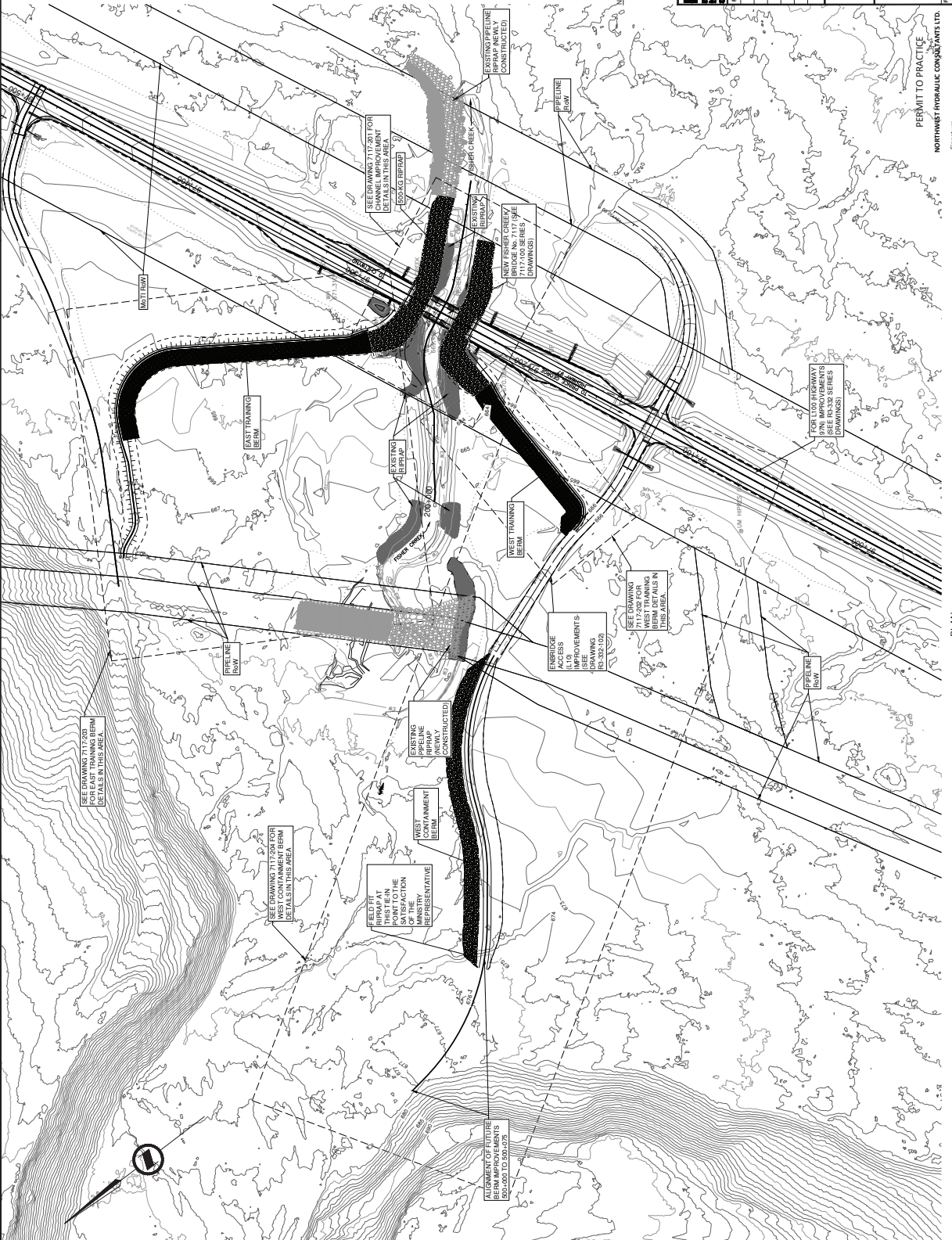
FISHER CREEK BRIDGE NO. 7117
 CHANNEL AND BERMS PLAN

REVISIONS

No.	Date	Description

Northwest Hydraulic Consultants Ltd.
 1000 West Broadway, Suite 200
 Vancouver, BC V6E 2E3
 Office: 604.683.0311
 Fax: 604.683.0314
 www.nhcl.ca

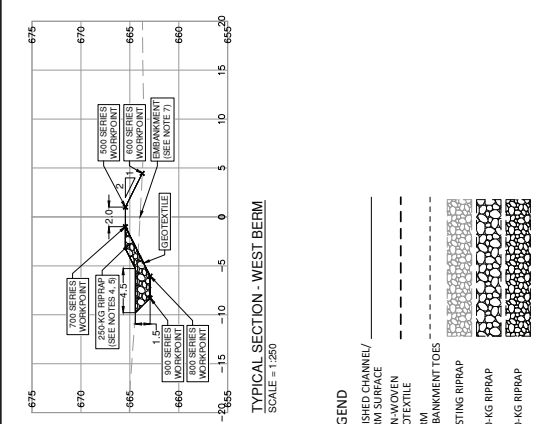
NOTES:
 1. SURVEY COMPLETED BY ACE HANNING CONSULTING SERVICES LTD. (2012, 2013 and 2018)
 2. UTM DATA FLOW IN 2018
 3. USE SURVEY CONTROL TABLE (DWG 413-232-001)
 4. CONTOUR INTERVALS 1.0 M
 5. ALL ELEVATIONS AND DISTANCES ARE GIVEN IN METRES



PLAN
 SCALE = 1:1000

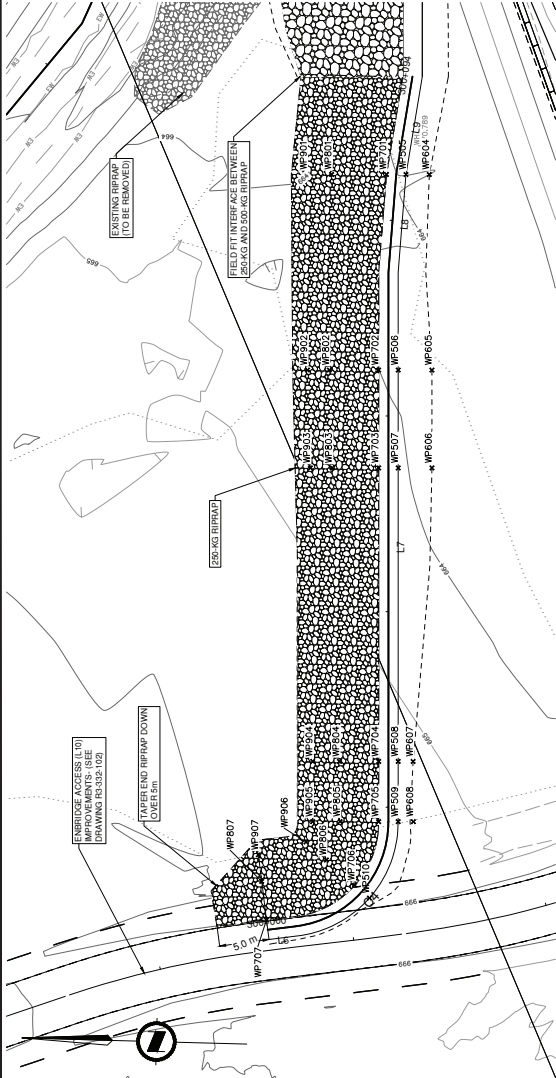
Signature: _____
 Date: _____
 PERMIT NUMBER: 1003221
 The Association of Professional Engineers and Geoscientists of British Columbia

CANCEL PRINTS BEARING PREVIOUS LETTER



TYPICAL SECTION - WEST BERM
SCALE = 1:250

- LEGEND**
- FINISHED CHANNEL/BERM SURFACE
 - NON-WOVEN GEOTEXTILE
 - EMBANKMENT TOES
 - EXISTING RIPRAP
 - 500-KG RIPRAP
 - 250-KG RIPRAP



PLAN - WEST TRAINING BERM
SCALE = 1:250

WEST TRAINING BERM WORKPOINTS			WEST TRAINING BERM WORKPOINTS				
WP	EASTING	NORTHING	ELEVATION	WP	EASTING	NORTHING	ELEVATION
WP205	542989.06	6182028.89	665.19	WP796	542998.20	6182050.12	666.14
WP206	542991.05	6182027.13	665.45	WP797	542998.20	6182050.12	666.14
WP207	542993.05	6182026.85	665.59	WP800	542998.20	6182050.12	666.14
WP208	542995.06	6182026.03	665.98	WP803	542998.20	6182050.12	666.14
WP209	542997.06	6182051.86	666.08	WP804	542998.20	6182050.12	666.14
WP210	542999.06	6182051.86	666.14	WP805	542998.20	6182050.12	666.14
WP211	543001.06	6182051.86	666.14	WP806	542998.20	6182050.12	666.14
WP212	543003.06	6182051.86	666.14	WP807	542998.20	6182050.12	666.14
WP213	543005.06	6182051.86	666.14	WP808	542998.20	6182050.12	666.14
WP214	543007.06	6182051.86	666.14	WP809	542998.20	6182050.12	666.14
WP215	543009.06	6182051.86	666.14	WP810	542998.20	6182050.12	666.14
WP216	543011.06	6182051.86	666.14	WP811	542998.20	6182050.12	666.14
WP217	543013.06	6182051.86	666.14	WP812	542998.20	6182050.12	666.14
WP218	543015.06	6182051.86	666.14	WP813	542998.20	6182050.12	666.14
WP219	543017.06	6182051.86	666.14	WP814	542998.20	6182050.12	666.14
WP220	543019.06	6182051.86	666.14	WP815	542998.20	6182050.12	666.14
WP221	543021.06	6182051.86	666.14	WP816	542998.20	6182050.12	666.14
WP222	543023.06	6182051.86	666.14	WP817	542998.20	6182050.12	666.14
WP223	543025.06	6182051.86	666.14	WP818	542998.20	6182050.12	666.14
WP224	543027.06	6182051.86	666.14	WP819	542998.20	6182050.12	666.14
WP225	543029.06	6182051.86	666.14	WP820	542998.20	6182050.12	666.14

500 SERIES WORKPOINTS DENOTE THE TOP OF BERMS
600 SERIES WORKPOINTS DENOTE THE TOE OF BERMS
700 SERIES WORKPOINTS DENOTE THE TOE OF 500-KG RIPRAP BACKSLOPE
800 SERIES WORKPOINTS DENOTE THE BOTTOM OF 500-KG RIPRAP BACKSLOPE
900 SERIES WORKPOINTS DENOTE THE TOE OF 250-KG RIPRAP APPROX

WEST BERM ALIGNMENT						
SEGMENT	START STA.	START E.	START N.	START TANGENT	LENGTH	RADIUS
L6	300+000.00	542998.49	6182050.89	1712323.91°	2.06	
C4	300+002.06	542997.93	6182050.38	1712323.91°	16.55	10.786
L7	300+018.40	542992.64	6182046.85	0882509.25°	56.19	
L8	300+074.69	542999.01	6182048.45	0924739.45°	10.03	
L9	300+084.71	542999.03	6182047.89	0973212.37°	10.14	

- NOTES:**
- ALL ELEVATIONS AND DISTANCES ARE GIVEN IN METERS.
 - EMBANKMENT QUANTITIES SHOWN REPRESENT COMPACTED (NEATLINE) CONDITIONS.
 - CROSS-SECTIONS ARE PLOTTED LOOKING EAST.
 - CONSTRUCTION SHALL BE IN ACCORDANCE WITH THE MINISTRY STANDARD SPECIFICATIONS FOR HIGHWAY CONSTRUCTION SECTION 205.
 - THE BACKSLOPE OF ALL RIPRAP SHALL BE LINED WITH A CLASS 1 NON-WOVEN GEOTEXTILE (MINEX 200) (FACTORY APPLIED). NO GEOTEXTILE SHALL BE PLACED HORIZONTALLY ON THE UNDERSIDE OF THE TRENCH.
 - EXISTING RIPRAP SHALL BE REMOVED AS NOTED AND CAN BE RE-USED IF APPROVED BY THE ENGINEER.
 - BERM EMBANKMENTS SHALL BE CONSTRUCTED ON A GRADED, GRUBBED AND STRIPPED SURFACE; HIGHWAY CONSTRUCTION SECTION 202.37.

THE PROJECT ENGINEER
Northwest Hydraulic Consultants Ltd.
1000 West Broadway, Suite 300
Vancouver, BC V6H 3R3
Tel: 604.683.0031
Fax: 604.683.0034
www.nwhc.com

Rev	Date	Description	Unit

BRITISH COLUMBIA
Ministry of Transportation & Infrastructure
Southern Interior Region

NORTH PEACE DISTRICT
HIGHWAY No. 97
FISHER CREEK BRIDGE No. 7117
WEST TRAINING BERM DETAILS

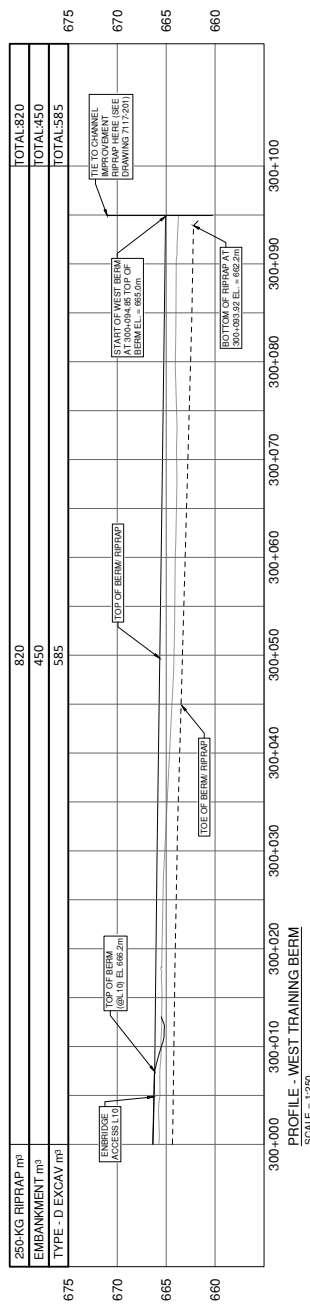
PREPARED UNDER THE DIRECTION OF

DESIGNED	LOD	DATE	DEC. 2011
CHECKED	LOD	DATE	DEC. 2011
DRAWN	LOD	DATE	DEC. 2011
SCALE	AS SHOWN		
DATE			

DESIGNER OF RECORD
NORTHWEST HYDRAULIC CONSULTANTS LTD.
PERMIT NUMBER: 1003221

PROJECT No.	37479-0000
PROJECT NAME	NR 7117-202

CANCEL PRINTS BEARING PREVIOUS LETTER



PROFILE - WEST TRAINING BERM
SCALE = 1:250

250-KG RIPRAP m³	820
EMBANKMENT m³	450
TYPE - D EXCAV m³	585
TOTAL: 820	
TOTAL: 450	
TOTAL: 585	

PERMIT TO PRACTICE
NORTHWEST HYDRAULIC CONSULTANTS LTD.
Signature _____
Date _____
PERMIT NUMBER: 1003221
The Association of Professional Engineers and Geoscientists of British Columbia

EAST TRAINING BERM WORKPOINTS			EAST TRAINING BERM WORKPOINTS				
WP	EASTING	NORTHING	ELEVATION	WP	EASTING	NORTHING	ELEVATION
WP514	543004.98	616216.85	669.30	WP620	543002.26	616223.07	667.43
WP515	543004.98	616216.85	669.30	WP621	543002.26	616223.07	667.43
WP516	543004.98	616216.85	669.30	WP622	543002.26	616223.07	667.43
WP517	543004.98	616216.85	669.30	WP623	543002.26	616223.07	667.43
WP518	543004.98	616216.85	669.30	WP624	543002.26	616223.07	667.43
WP519	543004.98	616216.85	669.30	WP625	543002.26	616223.07	667.43
WP520	543004.98	616216.85	669.30	WP626	543002.26	616223.07	667.43
WP521	543004.98	616216.85	669.30	WP627	543002.26	616223.07	667.43
WP522	543004.98	616216.85	669.30	WP628	543002.26	616223.07	667.43
WP523	543004.98	616216.85	669.30	WP629	543002.26	616223.07	667.43
WP524	543004.98	616216.85	669.30	WP630	543002.26	616223.07	667.43
WP525	543004.98	616216.85	669.30	WP631	543002.26	616223.07	667.43
WP526	543004.98	616216.85	669.30	WP632	543002.26	616223.07	667.43
WP527	543004.98	616216.85	669.30	WP633	543002.26	616223.07	667.43
WP528	543004.98	616216.85	669.30	WP634	543002.26	616223.07	667.43
WP529	543004.98	616216.85	669.30	WP635	543002.26	616223.07	667.43
WP530	543004.98	616216.85	669.30	WP636	543002.26	616223.07	667.43
WP531	543004.98	616216.85	669.30	WP637	543002.26	616223.07	667.43
WP532	543004.98	616216.85	669.30	WP638	543002.26	616223.07	667.43
WP533	543004.98	616216.85	669.30	WP639	543002.26	616223.07	667.43
WP534	543004.98	616216.85	669.30	WP640	543002.26	616223.07	667.43
WP535	543004.98	616216.85	669.30	WP641	543002.26	616223.07	667.43
WP536	543004.98	616216.85	669.30	WP642	543002.26	616223.07	667.43
WP537	543004.98	616216.85	669.30	WP643	543002.26	616223.07	667.43
WP538	543004.98	616216.85	669.30	WP644	543002.26	616223.07	667.43
WP539	543004.98	616216.85	669.30	WP645	543002.26	616223.07	667.43
WP540	543004.98	616216.85	669.30	WP646	543002.26	616223.07	667.43

- NOTES:
1. ALL ELEVATIONS AND DISTANCES ARE GIVEN IN METRES.
 2. EMBANKMENT QUANTITIES SHOWN REPRESENT COMPACTED (NEARLY) CONDITIONS.
 3. SPECIFICATIONS FOR HIGHWAY CONSTRUCTION SECTION 205.
 4. RIPRAP SPECIFICATIONS AND INSTALLATION SHALL CONFORM TO THE MINISTRY STANDARD ON EQUIVALENT, NO GEOTEKSTILE SHALL BE PLACED BENEATH THE HORIZONTAL TOES OF RIPRAP.
 5. BERM EMBANKMENTS SHALL BE CONSTRUCTED ON A GRADED, GRUBBED AND STRIPPED SURFACE, CONFORMING WITH THE MINISTRY STANDARD SPECIFICATION FOR HIGHWAY CONSTRUCTION SECTION 201.37.

BRITISH COLUMBIA
 Ministry of Transportation & Infrastructure
 Southern Interior Region

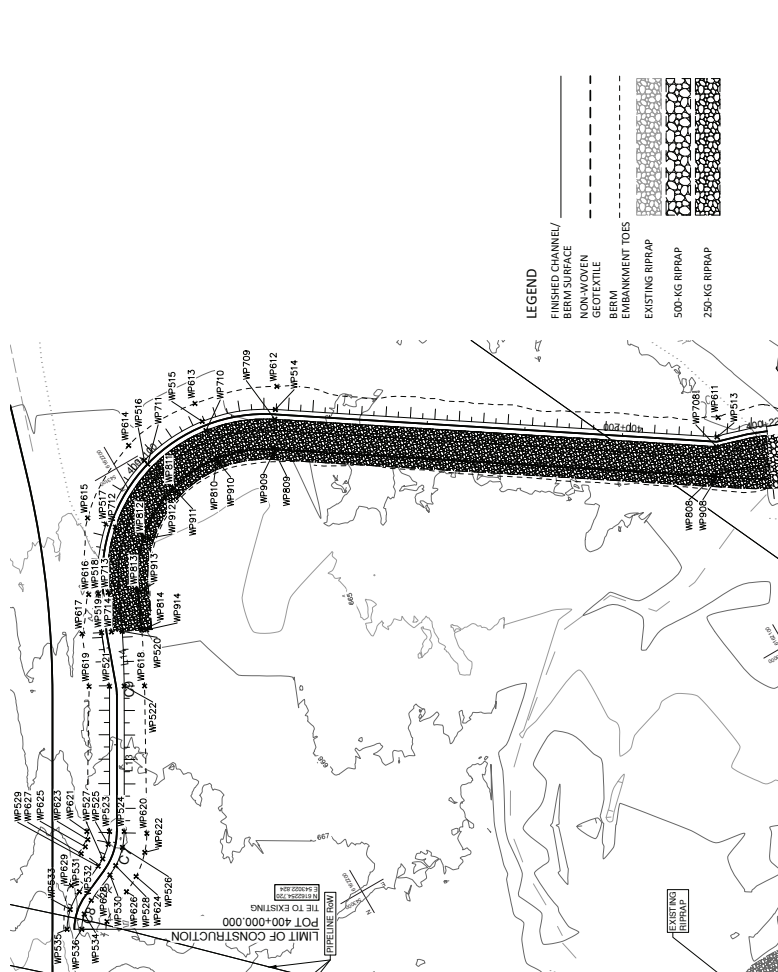
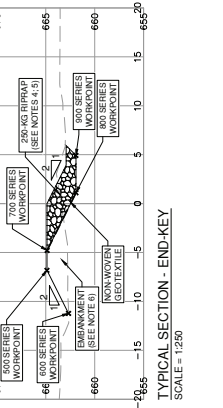
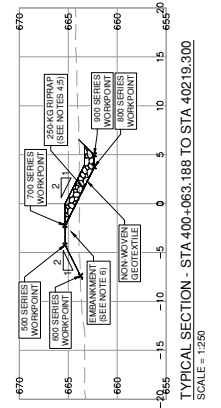
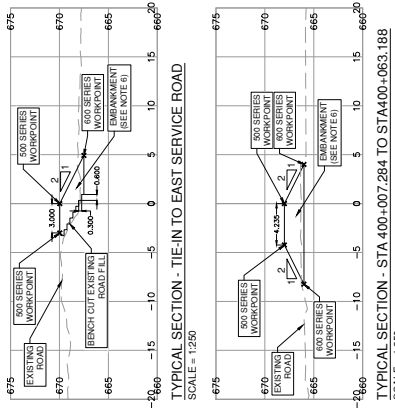
REVISED
 7117-203

NORTH PEACE DISTRICT
 HIGHWAY No. 97

FISHER CREEK BRIDGE NO. 7117
 EAST TRAINING BERM DETAILS

PREPARED UNDER THE DIRECTION OF

DESIGNED BY: DES GOULD, P. ENG. SCALE: AS SHOWN
 CHECKED BY: DATE: DEC. 2011
 DRAWN BY: DATE: DEC. 2011
 DATE OF RECORD: SCALE: AS SHOWN
 PROJECT NO.: 37479-0000 NR 7117-203
 SHEET NO.: 7117-203



SEGMENT	START STA.	START TANGENT	RADIUS	LENGTH	START STA.	START TANGENT	END STA.	END TANGENT	LENGTH	END STA.	END TANGENT
C6	400+000.00	543002.82	616224.72	120.00	400+000.00	543002.82	400+100.00	616224.72	120.00	400+100.00	616224.72
L12	400+007.28	543002.78	616224.37	6.46	400+007.28	543002.78	400+100.00	616224.37	6.46	400+100.00	616224.37
C7	400+013.74	543003.17	616224.36	8.35	400+013.74	543003.17	400+100.00	616224.36	8.35	400+100.00	616224.36
L13	400+022.26	543003.77	616223.16	27.37	400+022.26	543003.77	400+100.00	616223.16	27.37	400+100.00	616223.16
C9	400+055.28	543005.88	616223.14	17.77	400+055.28	543005.88	400+100.00	616223.14	17.77	400+100.00	616223.14
L14	400+055.28	543005.87	616222.38	11.15	400+055.28	543005.87	400+100.00	616222.38	11.15	400+100.00	616222.38

SEGMENT	START STA.	START TANGENT	RADIUS	LENGTH	START STA.	START TANGENT	END STA.	END TANGENT	LENGTH	END STA.	END TANGENT
C6	400+005.19	543002.54	616218.58	7.28	400+005.19	543002.54	400+100.00	616218.58	7.28	400+100.00	616218.58
C6	400+017.25	543003.32	616215.11	114.20	400+017.25	543003.32	400+100.00	616215.11	114.20	400+100.00	616215.11
L10	400+128.85	543003.28	616216.40	213.69	400+128.85	543003.28	400+100.00	616216.40	213.69	400+100.00	616216.40
L15	400+215.20	543003.09	616201.14	187.21	400+215.20	543003.09	400+100.00	616201.14	187.21	400+100.00	616201.14
L16	400+257.70	543001.28	616204.08	201.14	400+257.70	543001.28	400+100.00	616204.08	201.14	400+100.00	616204.08

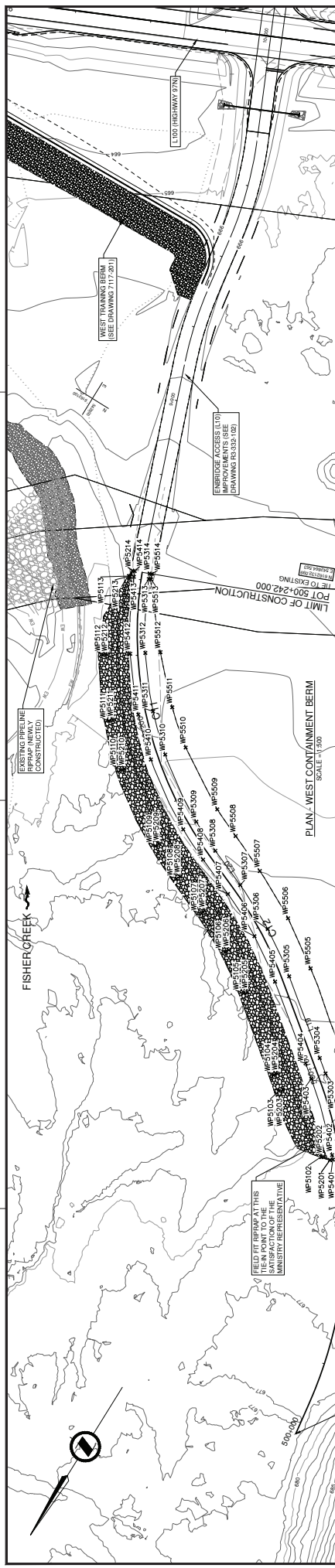
PERMIT TO PRACTICE

NORTHWEST HYDRAULIC CONSULTANTS LTD.

Signature: _____
 Date: _____

PERMIT NUMBER: 10033221

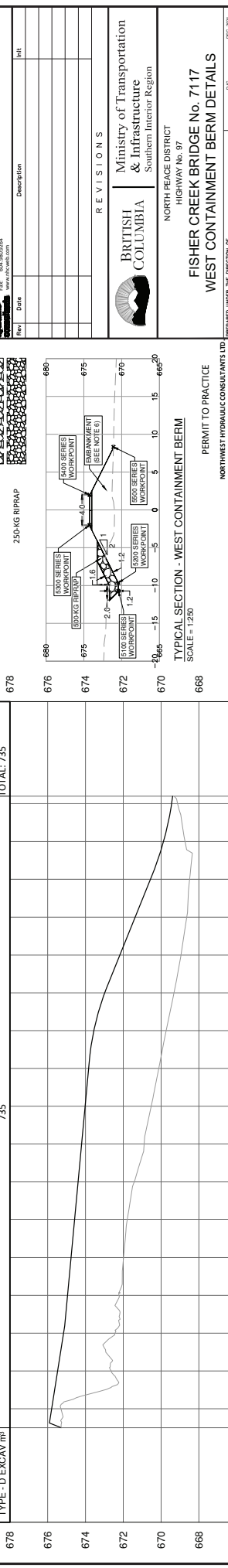
The Association of Professional Engineers and Geoscientists of British Columbia



WEST CONTAINMENT BERM WORKPOINTS			WEST CONTAINMENT BERM WORKPOINTS			WEST CONTAINMENT BERM WORKPOINTS			WEST CONTAINMENT BERM WORKPOINTS						
WP	EASTING	NORTHING	ELEV.	WP	EASTING	NORTHING	ELEV.	WP	EASTING	NORTHING	ELEV.	WP	EASTING	NORTHING	ELEV.
WP5101	542742.38	616237.92	675.20	WP5001	542742.38	616237.92	675.20	WP5401	542738.81	616227.41	675.28	WP5501	542738.24	616224.30	675.29
WP5102	542742.65	616238.49	674.55	WP5002	542742.65	616238.49	674.55	WP5402	542739.02	616228.01	675.29	WP5502	542738.46	616225.18	675.19
WP5103	542741.49	616238.71	671.14	WP5003	542741.49	616238.71	671.14	WP5403	542739.36	616228.64	675.24	WP5503	542738.80	616225.61	674.41
WP5104	542746.88	616238.71	671.14	WP5004	542746.88	616238.71	671.14	WP5404	542739.38	616229.58	675.10	WP5504	542738.82	616226.12	672.98
WP5105	542740.03	616238.52	670.78	WP5005	542740.03	616238.52	670.78	WP5405	542739.72	616230.51	674.67	WP5505	542739.16	616227.57	671.66
WP5106	542732.05	616238.78	670.87	WP5006	542732.05	616238.78	670.87	WP5406	542738.87	616229.18	674.42	WP5506	542738.31	616226.45	671.39
WP5107	542803.70	616238.43	670.36	WP5007	542803.70	616238.43	670.36	WP5407	542804.41	616232.28	674.17	WP5507	542798.49	616218.28	670.84
WP5108	542814.07	616238.11	670.19	WP5008	542814.07	616238.11	670.19	WP5408	542814.81	616233.13	673.96	WP5508	542808.79	616217.28	670.84
WP5109	542824.42	616237.71	670.04	WP5009	542824.42	616237.71	670.04	WP5409	542815.46	616234.12	673.79	WP5509	542814.83	616217.47	670.57
WP5110	542834.83	616237.52	669.09	WP5010	542834.83	616237.52	669.09	WP5410	542835.36	616235.03	673.59	WP5510	542834.35	616216.38	669.93
WP5111	542845.27	616237.10	668.39	WP5011	542845.27	616237.10	668.39	WP5411	542846.20	616235.99	673.41	WP5511	542845.36	616215.22	669.23
WP5112	542855.78	616236.16	667.47	WP5012	542855.78	616236.16	667.47	WP5412	542856.09	616236.96	673.20	WP5512	542855.33	616214.46	668.92
WP5113	542866.20	616235.79	666.86	WP5013	542866.20	616235.79	666.86	WP5413	542867.01	616237.92	669.43	WP5513	542866.29	616213.44	668.13
WP5114	542866.37	616235.10	666.09	WP5014	542866.37	616235.10	666.09	WP5414	542867.22	616238.87	669.39	WP5514	542866.18	616213.10	668.09

SEGMENT	START STA.	START E.	START TANGENT	L.	R.
L19	500+097.54	542794.69	616220.88	127°30'06.60"	27.42
C12	500+126.06	542776.40	616220.92	127°30'06.60"	26.92
L20	500+151.86	542739.65	616219.53	112°15'46.75"	11.24
C11	500+181.12	542810.95	616218.29	112°15'46.75"	10.92

500-KG RIPRAP m³	1205
EMBRANKMENT m³	3900
TOTAL: 5105	
TYPE - D EXCAV m³	735
TOTAL: 735	



STATION	ELEVATION
500+075	670
500+100	672
500+120	674
500+140	676
500+160	678
500+180	678
500+200	678
500+220	678
500+242	678

WEST CONTAINMENT BERM ALIGNMENT

FIELD FIT RIPRAP AT THIS LOCATION AT THE SATISFACTION OF THE MINISTRY REPRESENTATIVE

ALIGNMENT OF FUTURE BERM IMPROVEMENTS 500+000 TO 500+075

SCALE = 1:500
V. EX = 8A

PROFILE VIEW - WEST CONTAINMENT BERM

SCALE = 1:500

TOTAL: 1205
TOTAL: 3900
TOTAL: 5105

678
676
674
672
670
668

LEGEND

FINISHED CHANNEL/
BERM SURFACE

NON-WOVEN
GEOTEXTILE

BERM
EMBRANKMENT TOES

EXISTING RIPRAP

500-KG RIPRAP

250-KG RIPRAP

NOTES:

1. ALL ELEVATIONS AND DISTANCES ARE GIVEN IN METERS.
2. EMBANKMENT QUANTITIES SHOWN REPRESENT COMPACTED (NET) IN CONDITIONS.
3. ALL DIMENSIONS ARE GIVEN IN METERS.
4. RIPRAP SPECIFICATIONS AND INSTALLATION SHALL CONFORM TO THE MINISTRY STANDARD SPECIFICATIONS FOR HIGHWAY CONSTRUCTION SECTION 205.
5. ALL DIMENSIONS ARE GIVEN IN METERS UNLESS OTHERWISE NOTED.
6. BERM EMBANKMENTS SHALL BE CONSTRUCTED ON A GRADED AND STRIPPED SURFACE. THE EQUIVALENT NO. GEOTEXTILE SHALL BE PLACED BENEATH THE HORIZONTAL LINES OF RIPRAP. THE RIPRAP SHALL BE PLACED IN ACCORDANCE WITH THE MINISTRY STANDARD SPECIFICATION FOR HIGHWAY CONSTRUCTION SECTION 203.17.

BRITISH COLUMBIA
Ministry of Transportation & Infrastructure
Southern Interior Region

FISHER CREEK BRIDGE NO. 7117
WEST CONTAINMENT BERM DETAILS

NORTH PEACE DISTRICT
HIGHWAY No. 97

DESIGNED: [] DATE: []
CHECKED: [] DATE: []
DRAWN: [] DATE: []
SCALE: AS SHOWN

DESIGNER OF RECORD: DES GOULD, P. ENG.
DATE: []

PROJECT NO.: 37479-0000
SHEET NO.: NR 7117-204

CANCEL PRINTS BEARING PREVIOUS LETTER