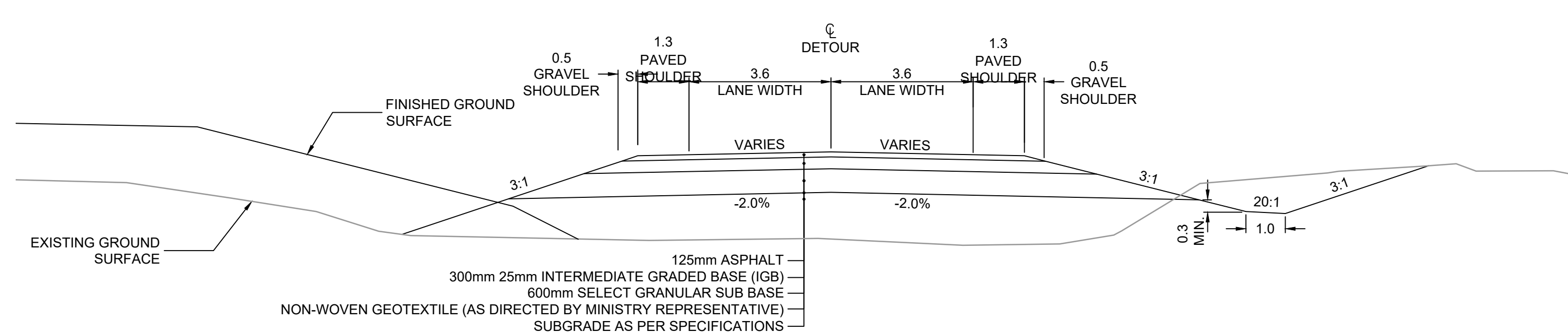
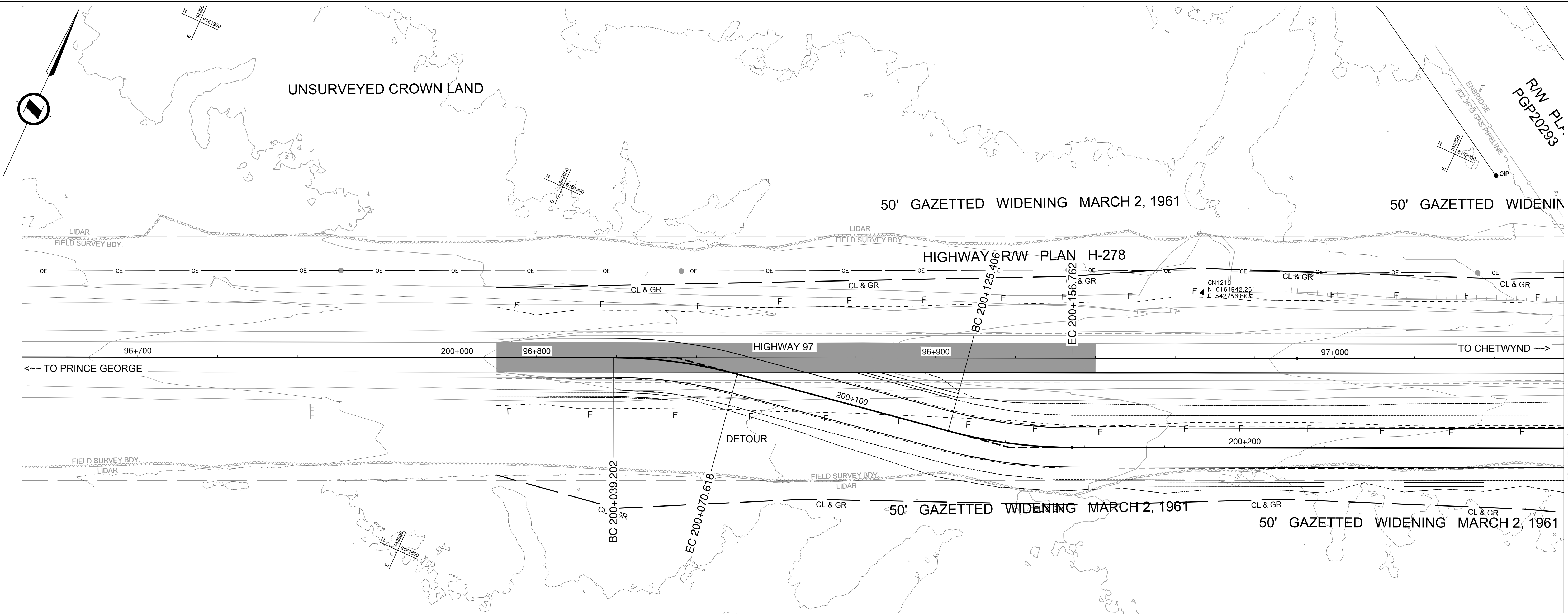
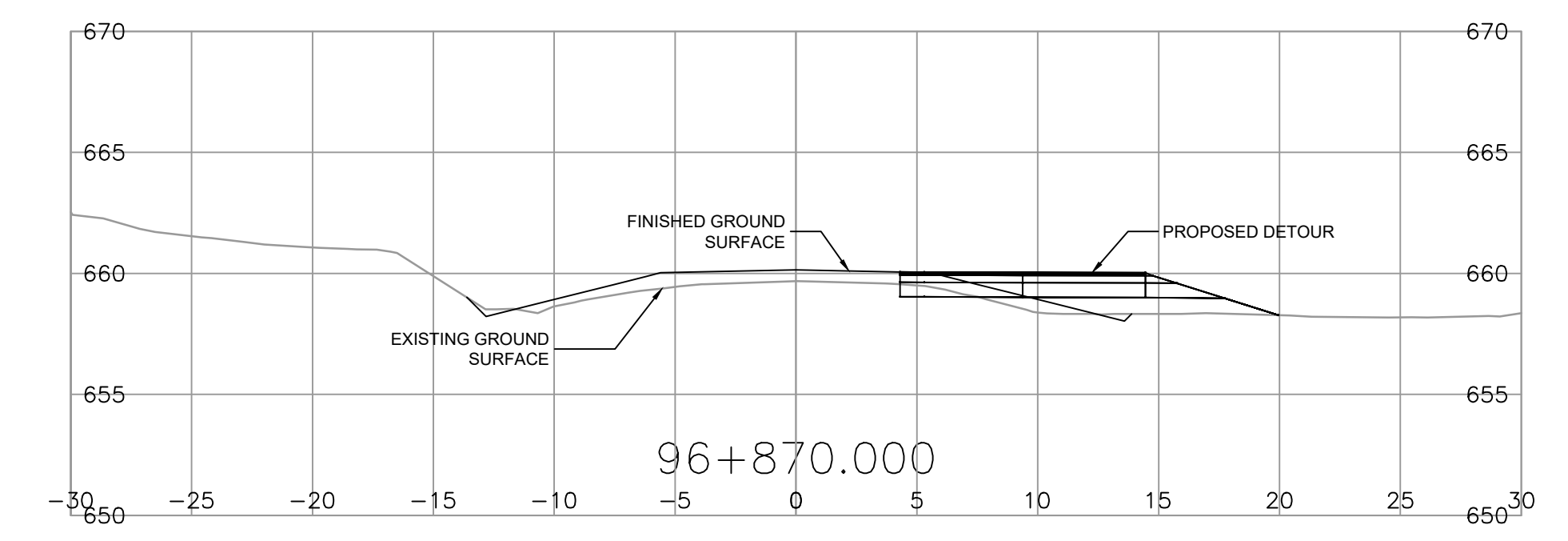


PLOT DATE: 2023/07/05 X:\2241\Bridges\Projects\2241-02812-00_MoTI_Nr_As_and_When_(2021)\Projects\2003 - Fisher Creek Bridge\10.0 DRAWINGS\DesignModel\03_Corridors\C-DESN-CORR-DETOUR.dwg



DETOUR HIGHWAY 97 (L200) - TYPICAL SECTION CUT/FILL



FIELD SURVEY BY R. LOACH/M. SOSIAK - DECEMBER 17 - 20, 2012. UPDATED PREVIOUS FIELD SURVEY BY C. MAURER/M. SOSIAK - AUGUST 8, 11 & 21, 2011. R. LOACH/M. SOSIAK - MARCH 6, 2013. J. GAYOWSKI/V. STAMENOV - AUGUST 27-29, 2018.

THE HORIZONTAL AND VERTICAL CONTROL FOR THIS SURVEY WAS ESTABLISHED FROM MoTI UTM CONTROL POINT PEDGE2012 N 61668783.373 E 552878.557 ORTHOMETRIC ELEV. 617.940m.

ALL POINTS ARE IN UTM Z10 NAD83 CGVD08 HT 2.0 AND NOT SCALED TO GROUND. IF GROUND BASED NEEDED, USE MCSL2585 AS TACK POINT AND SCALE FACTOR OF 0.999522.

ALL PLANIMETRIC AND TOPOGRAPHIC INFORMATION, EXCEPT WHERE MENTIONED, HAS BEEN RTK SURVEYED.

INFORMATION ON EXISTING UTILITIES MAY NOT BE COMPLETE OR ACCURATE. PRIOR TO CONSTRUCTION THE CONTRACTOR SHALL EXPOSE LOCATIONS OF ALL EXISTING UTILITIES AND ADVISE THE OWNER OF POTENTIAL CONFLICTS.

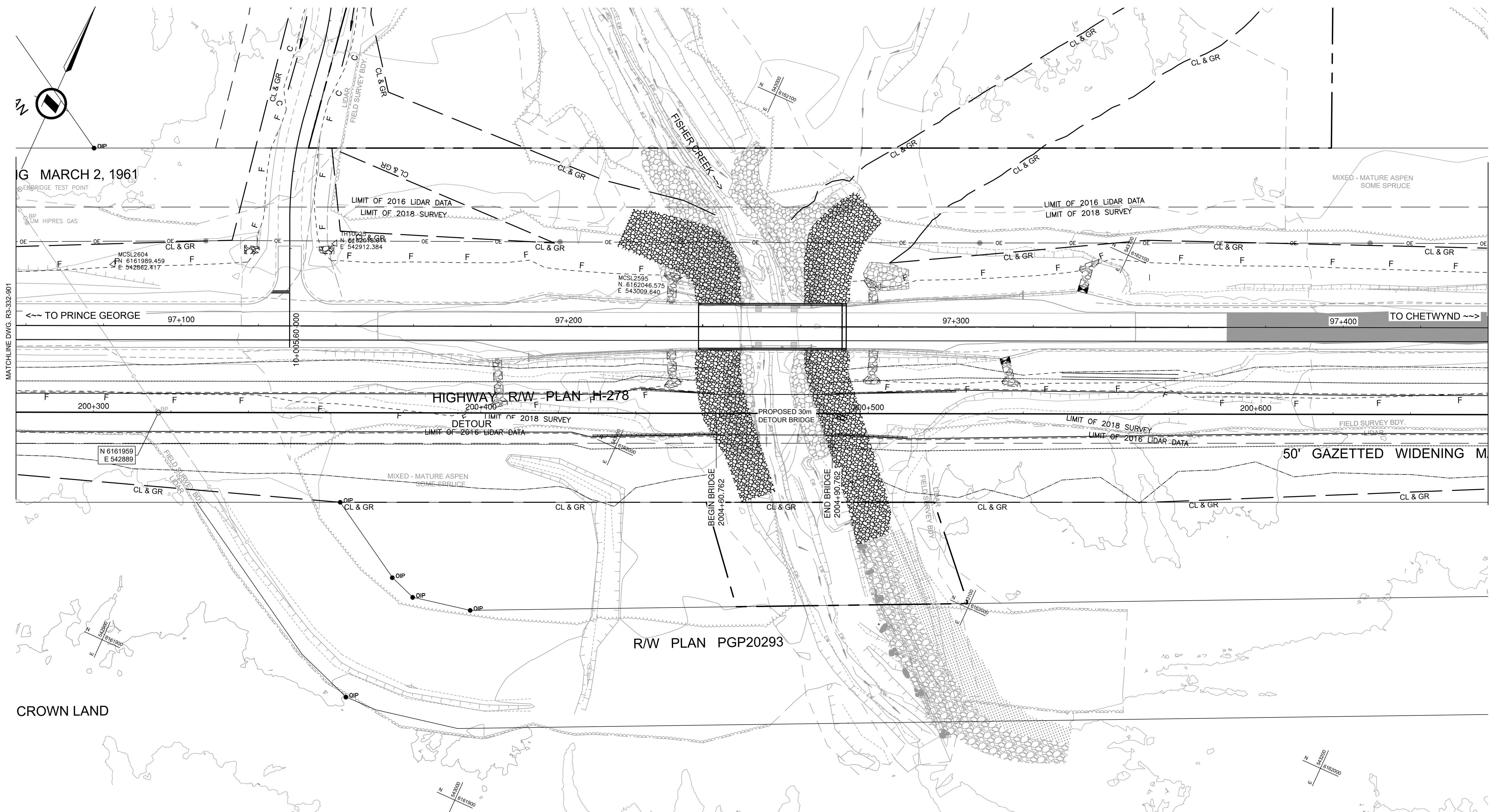
THE PROPERTY BOUNDARIES SHOWN ARE COMPILED FROM LTO PLANS AND FIELD TIED IPS. THEY SHOULD BE USED ACCORDINGLY.

LIDAR DATA SHOWN IS FROM 2013.

DETOUR DESIGN SPEED 50 km/h

				MINISTRY OF TRANSPORTATION AND INFRASTRUCTURE NORTHERN REGION HIGHWAY ENGINEERING AND GEOMATICS	
SCALE 0 5 1:500 25m		CAD FILE NAME: C-DESN-CORR-DETOUR PLOT DATE: 7/5/2023		DETOUR PLAN HIGHWAY 97 - FISHER CREEK BRIDGE 7117 STA 200+000 TO STA 200+380	
REV	DATE	REVISIONS	NAME		
A	2019-02-15	ISSUED FOR DISCUSSION	L. PELTZ		
B	2023-07-05	UPDATED BASED ON ENBRIDGE COMMENTS	L. PELTZ		
SENIOR DESIGNER: _____ DATE: 2019-02-15				DESIGNED: _____ RT DATE: 2019-02-15 QUALITY CONTROL: _____ ERS DATE: 2019-02-15 QUALITY ASSURANCE: _____ LMP DATE: 2019-02-15 DRAWN: _____ RT DATE: 2019-02-15	
FILE NUMBER: 2241-02812-03		PROJECT NUMBER: 37479-0000		REG: NR DRAWING NUMBER: R3-332-901 REV: B	

PLOT DATE: 2023/07/05 X:\2241\Bridges\Projects\2241-02812-00_MoTI_Nr_As_and_When_(2021)\Projects\2003 - Fisher Creek Bridge\10.0 DRAWINGS\DesignModel\03_Corridors\C-DESN-CORR-DETOUR.dwg



FIELD SURVEY BY R. LOACH/M. SOSIAK - DECEMBER 17 - 20, 2012. UPDATED PREVIOUS FIELD SURVEY BY C. MAURER/M. SOSIAK - AUGUST 8, 11 & 21, 2011
 R. LOACH/M. SOSIAK - MARCH 6, 2013
 J. GAYOWSKI/V. STAMENOV - AUGUST 27-29, 2018

THE HORIZONTAL AND VERTICAL CONTROL FOR THIS SURVEY WAS ESTABLISHED FROM MoTI UTM CONTROL POINT PEDGE2012 N 6166783.373 E 552878.557 ORTHOMETRIC ELEV. 617.940m.

ALL POINTS ARE IN UTM Z10 NAD83 CGVD08 HT 2.0 AND NOT SCALED TO GROUND. IF GROUND BASED NEEDED, USE MCSL2585 AS TACK POINT AND SCALE FACTOR OF 0.999522.

ALL PLANIMETRIC AND TOPOGRAPHIC INFORMATION, EXCEPT WHERE MENTIONED, HAS BEEN RTK SURVEYED.

INFORMATION ON EXISTING UTILITIES MAY NOT BE COMPLETE OR ACCURATE. PRIOR TO CONSTRUCTION THE CONTRACTOR SHALL EXPOSE LOCATIONS OF ALL EXISTING UTILITIES AND ADVISE THE OWNER OF POTENTIAL CONFLICTS.

THE PROPERTY BOUNDARIES SHOWN ARE COMPILED FROM LTO PLANS AND FIELD TIED IPS. THEY SHOULD BE USED ACCORDINGLY.

LIDAR DATA SHOWN IS FROM 2013.

DETOUR DESIGN SPEED 50 km/h

MINISTRY OF TRANSPORTATION AND INFRASTRUCTURE
NORTHERN REGION
HIGHWAY ENGINEERING AND GEOMATICS

SCALE 0 5 1:500 25m

CAD FILE NAME: C-DESN-CORR-DETOUR
PLOT DATE: 7/5/2023

DETOUR PLAN
HIGHWAY 97 - FISHER CREEK
BRIDGE 7117

STA 200+380 TO STA 200+760

REV	DATE	REVISIONS	NAME
A	2019-02-15	ISSUED FOR DISCUSSION	L. PELTZ
B	2023-07-05	UPDATED BASED ON ENBRIDGE COMMENTS	L. PELTZ

DESIGNED _____ RT DATE 2019-02-15

QUALITY CONTROL _____ ERS DATE 2019-02-15

QUALITY ASSURANCE _____ LMP DATE 2019-02-15

DRAWN _____ RT DATE 2019-02-15

SENIOR DESIGNER _____

DATE 2019-02-15

FILE NUMBER 2241-02812-03

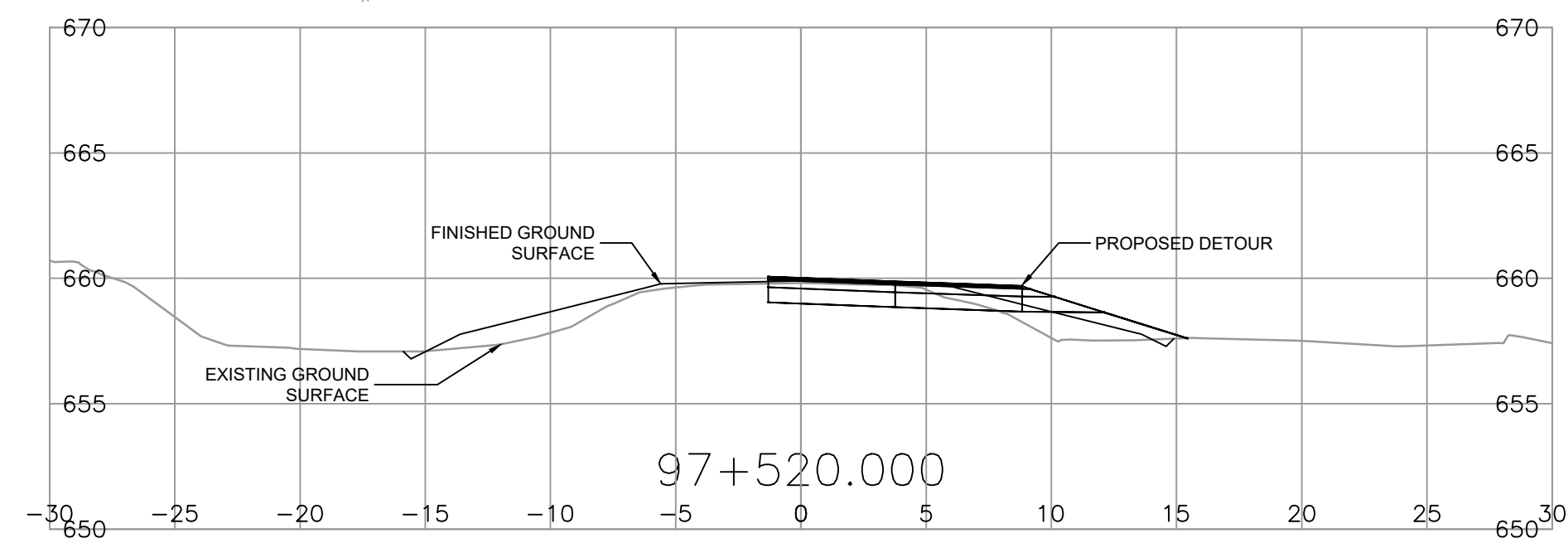
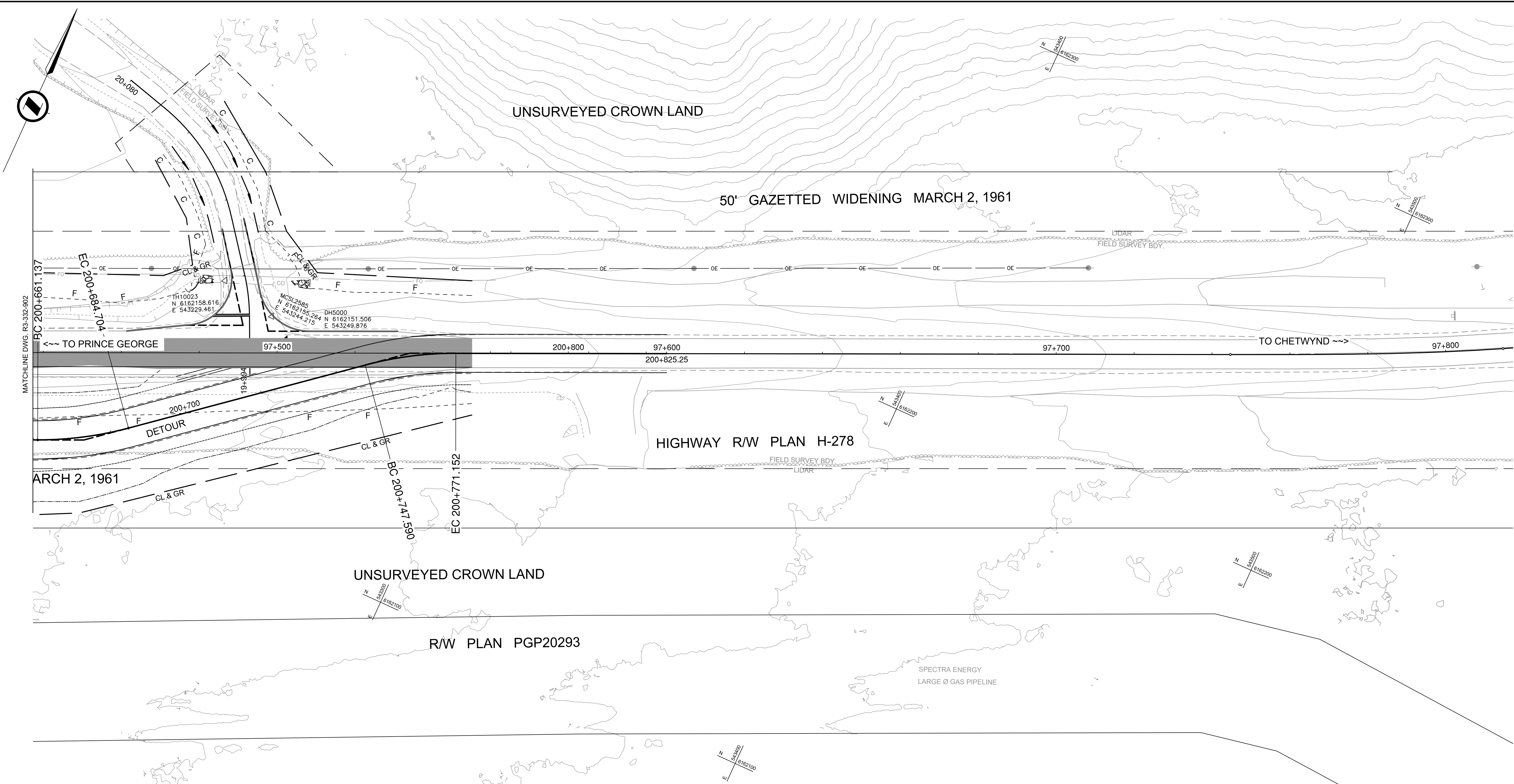
PROJECT NUMBER 37479-0000

REG NR

DRAWING NUMBER R3-332-902

REV B

PLOT DATE: 2023/07/05 X:\2241\Bridges\Projects\2241-02812-00_MoTI_NR_As_and_When_(2021)\Projects\2003 - Fisher Creek Bridge\10.0 DRAWINGS\DesignModel\03_Corridors\C-CORR-DETOUR.dwg



DETOUR DESIGN SPEED 50 km/h

FIELD SURVEY BY R. LOACH/M. SOSIAK - DECEMBER 17 - 20, 2012. UPDATED PREVIOUS FIELD SURVEY BY C. MAURER/M. SOSIAK - AUGUST 8, 11 & 21, 2011. R. LOACH/M. SOSIAK - MARCH 6, 2013. J. GAYOWSKI/V. STAMENOV - AUGUST 27-29, 2018.

THE HORIZONTAL AND VERTICAL CONTROL FOR THIS SURVEY WAS ESTABLISHED FROM MoTI UTM CONTROL POINT PEDGE2012 N 6166783.373 E 552878.557 ORTHOMETRIC ELEV. 617.940m.

ALL POINTS ARE IN UTM Z10 NAD83 CGVD08 HT 2.0 AND NOT SCALED TO GROUND. IF GROUND BASED NEEDED, USE MCSL2585 AS TACK POINT AND SCALE FACTOR OF 0.999522.

ALL PLANIMETRIC AND TOPOGRAPHIC INFORMATION, EXCEPT WHERE MENTIONED, HAS BEEN RTK SURVEYED.

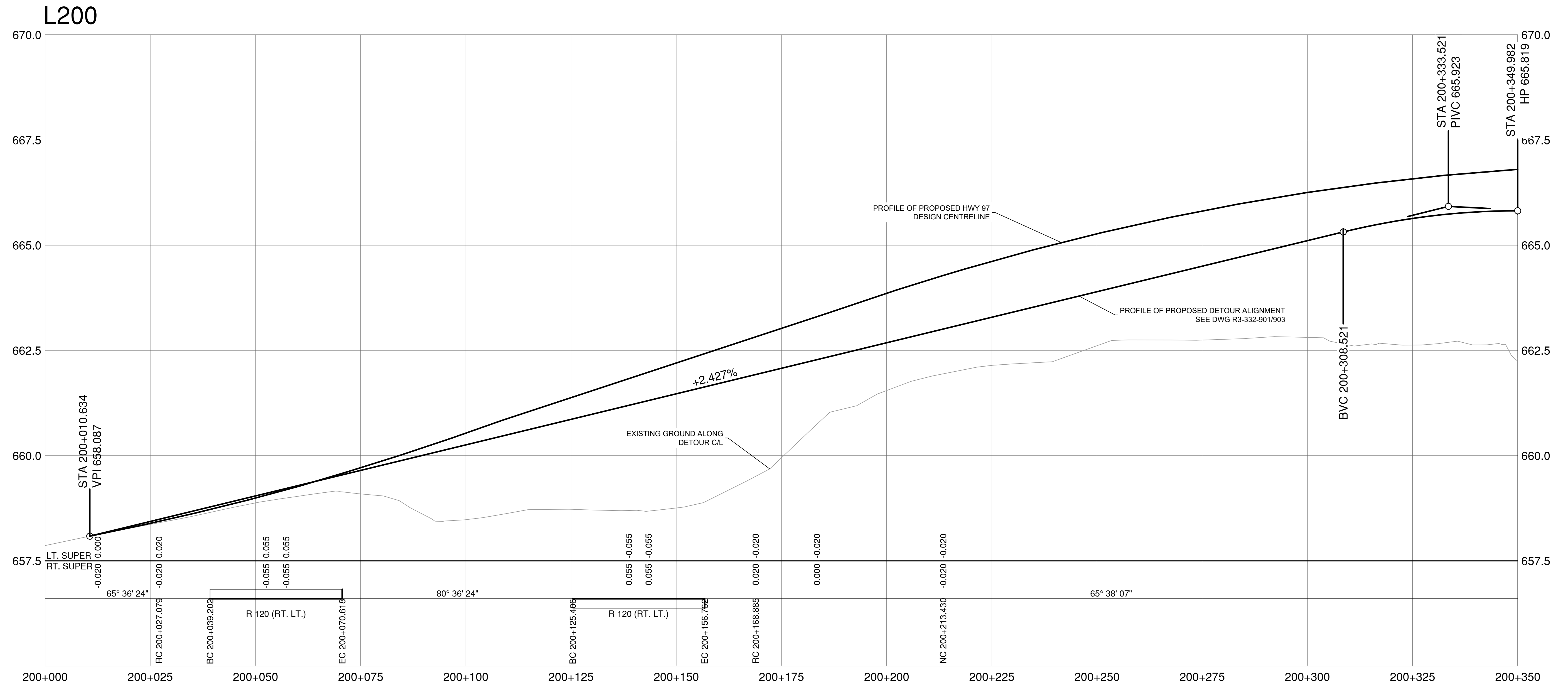
INFORMATION ON EXISTING UTILITIES MAY NOT BE COMPLETE OR ACCURATE. PRIOR TO CONSTRUCTION THE CONTRACTOR SHALL EXPOSE LOCATIONS OF ALL EXISTING UTILITIES AND ADVISE THE OWNER OF POTENTIAL CONFLICTS.

THE PROPERTY BOUNDARIES SHOWN ARE COMPILED FROM LTO PLANS AND FIELD TIED IPS. THEY SHOULD BE USED ACCORDINGLY.

LIDAR DATA SHOWN IS FROM 2013.

		Suite 500 3960 Quadra Street Victoria BC Canada V8X 4A3 Tel 250 370 9221		MINISTRY OF TRANSPORTATION AND INFRASTRUCTURE NORTHERN REGION HIGHWAY ENGINEERING AND GEOMATICS	
SCALE 0 5 1:500 25m		CAD FILENAME: DESN-CORR-DETOUR PLOT DATE 7/5/2023		DETOUR PLAN HIGHWAY 97 - FISHER CREEK BRIDGE 7117 STA 200+760 TO STA 200+925.25	
REV	DATE	REVISIONS	NAME		
A	2019-02-15	ISSUED FOR DISCUSSION	L. PELTZ		
B	2023-07-05	UPDATED BASED ON ENBRIDGE COMMENTS	L. PELTZ		
SENIOR DESIGNER _____ DATE 2019-02-15			DESIGNED _____ RT DATE 2019-02-15 QUALITY CONTROL _____ ERS DATE 2019-02-15 QUALITY ASSURANCE _____ LMP DATE 2019-02-15 DRAWN _____ RT DATE 2019-02-15		
FILE NUMBER 2241-02812-03		PROJECT NUMBER 37479-0000		REG NR	
DRAWING NUMBER R3-332-903		REV B			

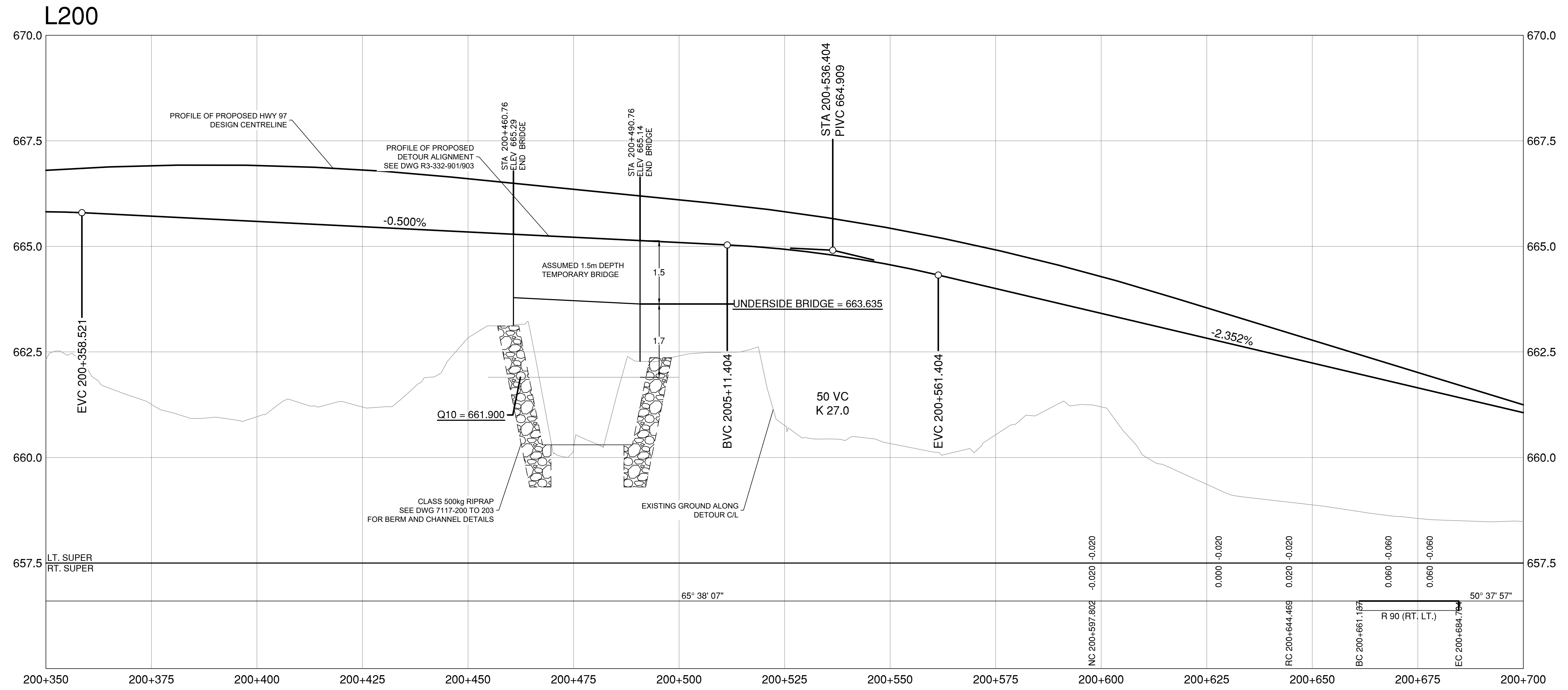
PLOT DATE: 2023/07/05 X:\2241\Bridge\Projects\2241-02812-00 MoTI NR As and When (2021)\Projects\2003 - Fisher Creek Bridge\10.0 DRAWINGS\DesignModel\03_Corridors\C-DESN-CORR-DETOUR.dwg



HWY DESIGN SPEED 100 km/h
 DETOUR DESIGN SPEED 50 km/h

		Suite 500 3960 Quadra Street Victoria BC Canada V8X 4A3 Tel 250 370 9221				MINISTRY OF TRANSPORTATION AND INFRASTRUCTURE NORTHERN REGION HIGHWAY ENGINEERING AND GEOMATICS	
SCALE 0 5 H 1:500 25m 0 0.5 V 1:50 2.5m		CAD FILENAME: DESN-CORR-DETOUR PLOT DATE: 7/5/2023		DETOUR PROFILE HIGHWAY 97 - FISHER CREEK BRIDGE 7117 STA 200+000 TO STA 200+350			
REV	DATE	REVISIONS	NAME				
A	2019-02-15	ISSUED FOR DISCUSSION	L. PELTZ				
B	2023-07-05	UPDATED BASED ON ENBRIDGE COMMENTS	L. PELTZ				
DESIGNED		RT	DATE	2019-02-15			
QUALITY CONTROL		ERS	DATE	2019-02-15			
QUALITY ASSURANCE		LMP	DATE	2019-02-15			
DRAWN		RT	DATE	2019-02-15			
SENIOR DESIGNER							
DATE	2019-02-15						
FILE NUMBER	2241-02812-03	PROJECT NUMBER	37479-0000	REG	NR	DRAWING NUMBER	R3-332-904
REV		B					

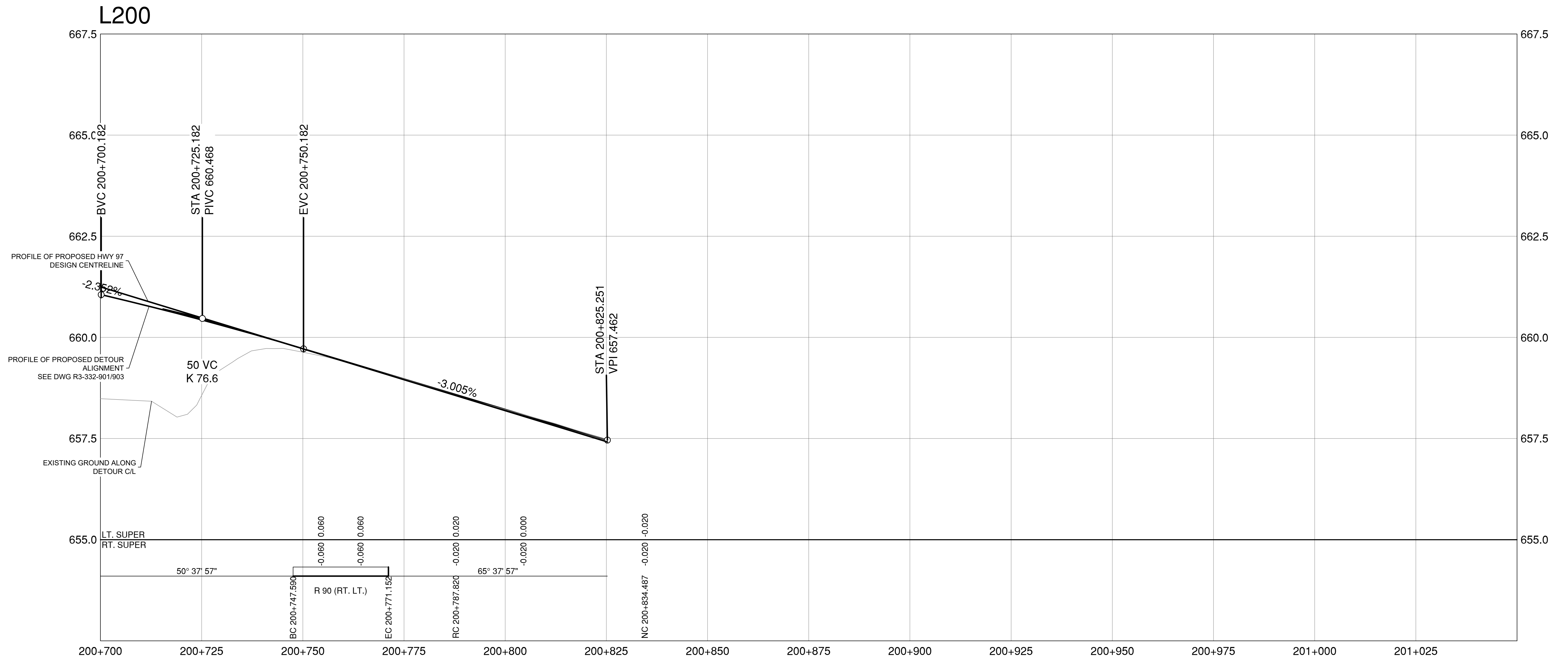
PLOT DATE: 2023/07/05 X:\2241\Bridges\Projects\2241-02812-00 MoTI NR As and When (2021)\Projects\2003 - Fisher Creek Bridge\10.0 DRAWINGS\DesignModel\03_Corridors\C-DESN-CORR-DETOUR.dwg



HWY DESIGN SPEED 100 km/h
 DETOUR DESIGN SPEED 50 km/h

		Suite 500 3960 Quadra Street Victoria BC Canada V8X 4A3 Tel 250 370 9221				MINISTRY OF TRANSPORTATION AND INFRASTRUCTURE NORTHERN REGION HIGHWAY ENGINEERING AND GEOMATICS	
SCALE 0 5 10 25m H 1:500 0 0.5 1.0 2.5m V 1:50		CAD FILENAME: C-DESN-CORR-DETOUR PLOT DATE: 7/5/2023		DETOUR PROFILE HIGHWAY 97 - FISHER CREEK BRIDGE 7117 STA 200+350 TO STA 200+700			
REV	DATE	REVISIONS	NAME				
A	2019-02-15	ISSUED FOR DISCUSSION	L. PELTZ				
B	2023-07-05	UPDATED BASED ON ENBRIDGE COMMENTS	L. PELTZ				
				DESIGNED: _____ RT DATE: 2019-02-15 QUALITY CONTROL: _____ ERS DATE: 2019-02-15 QUALITY ASSURANCE: _____ LMP DATE: 2019-02-15 SENIOR DESIGNER: _____ DRAWN: _____ RT DATE: 2019-02-15			
DATE: 2019-02-15		FILE NUMBER: 2241-02812-03	PROJECT NUMBER: 37479-0000	REG: NR	DRAWING NUMBER: R3-332-905	REV: B	

PLOT DATE: 2023/07/05 X:\2241\Bridges\Projects\2241-02812-00_MoTI_Nr_As_and_When_(2021)\Projects\2003 - Fisher_Creek_Bridge\10.0_DRAWINGS\DesignModel\03_Corridors\C-C-DESN-CORR-DETOUR.dwg



HWY DESIGN SPEED 100 km/h
 DETOUR DESIGN SPEED 50 km/h



Suite 500
 3960 Quadra Street
 Victoria BC
 Canada V8X 4A3
 Tel 250 370 9221



MINISTRY OF TRANSPORTATION
 AND INFRASTRUCTURE
 NORTHERN REGION
 HIGHWAY ENGINEERING AND GEOMATICS



SCALE 0 5 H 1:500 25m
 0 0.5 V 1:50 2.5m
 CAD FILENAME: DESN-CORR-DETOUR
 PLOT DATE 7/5/2023

DETOUR PROFILE
 HIGHWAY 97 - FISHER CREEK
 BRIDGE 7117

STA 200+700 TO STA 201+050

REV	DATE	REVISIONS	NAME
A	2019-02-15	ISSUED FOR DISCUSSION	L. PELTZ
B	2023-07-05	UPDATED BASED ON ENBRIDGE COMMENTS	L. PELTZ

DESIGNED	RT	DATE	2019-02-15
QUALITY CONTROL	ERS	DATE	2019-02-15
QUALITY ASSURANCE	LMP	DATE	2019-02-15
DATE	2019-02-15	DRAWN	RT
DATE	2019-02-15	DRAWN	RT
FILE NUMBER	PROJECT NUMBER	REG	DRAWING NUMBER
2241-02812-03	37479-0000	NR	R3-332-906
			REV
			B