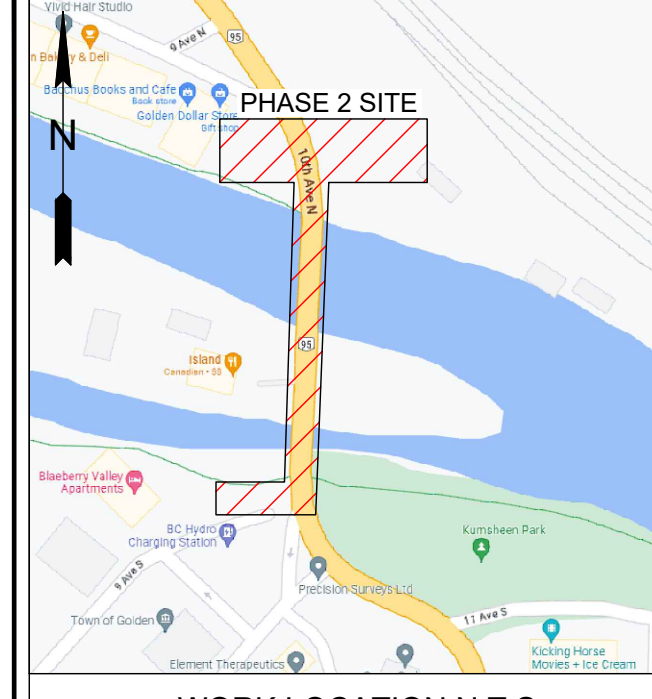




LAT:99.999999 LONG:-99.999999



WORK LOCATION N.T.S.

**BC ONE CALL**  
 CALL BEFORE YOU DIG  
 1-800-474-6886  
 CALL AT LEAST 3 FULL WORKING DAYS BEFORE YOU PLAN TO DIG



**CIVIL SPEC. 1323 NOTES:**

1. BC HYDRO UNDERGROUND CIVIL INSPECTOR MUST BE NOTIFIED 48 HOURS PRIOR TO CONSTRUCTION.
2. ALL WORK TO BE PERFORMED IN ACCORDANCE WITH CLASS OF WORK SPECIFICATION 1323 AND BC HYDRO UNDERGROUND DISTRIBUTION ENGINEERING STANDARDS SERIES ESS3 AND ESS4.
3. ANY CHANGES NEED TO HAVE PRIOR APPROVAL OF BC HYDRO CIVIL INSPECTOR.
4. UNLESS OTHERWISE NOTED ON TRENCH DETAILS OR REQUIRED PER ES 54 H0-02.02, ALL CONDUIT INSTALLATION FOR BC HYDRO ON PUBLIC OR PRIVATE PROPERTY SHOULD HAVE MIN. 0.9m COVER AND ANY FACTORY BEND MUST HAVE A MIN. RADIUS OF 0.9m.
5. ALL UTILITIES (EXCEPT TELUS) MUST MAINTAIN A 0.9m HORIZONTAL AND 0.3m VERTICAL SEPARATION FROM BC HYDRO DUCT UNLESS DIRECTED OTHERWISE BY BC HYDRO CIVIL INSPECTOR.
6. OTHER UTILITIES SHOWN ON THE CIVIL DRAWING ARE FOR REFERENCE ONLY. PROVE LOCATION OF ALL UTILITIES IN THE WORK AREA BEFORE CONSTRUCTION. FOR CURRENT INFORMATION CONTACT BC ONE CALL.
7. ALL OFFSETS INDICATE CENTERLINE OF BC HYDRO PLANT.
8. METRES EXPRESSED IN DECIMALS, MILLIMETRES IN WHOLE NUMBERS.
9. TRANSFORMER MUST BE A MIN. OF 1.5m BEHIND NON-MOUNTABLE CURB OR PROTECTED. FINAL NUMBER AND LOCATION OF PROTECTION POSTS TO BE DETERMINED IN THE FIELD BY BC HYDRO CIVIL INSPECTOR.
10. FOR TRANSFORMER PAD COUNTERPOISE CLEARANCES TO OTHER UTILITIES AND UNDERGROUND CONDUCTIVE SURFACES, SEE ESS4.
11. MIN. OFFSET FOR BC HYDRO DUCTS, IN JOINT TRENCH, FROM PROPERTY LINE IS 1.2m, UNLESS OTHERWISE NOTED.
12. STUB SERVICE DUCT 1.0m FROM PROPERTY CORNER AND 1.0m INTO THE LOT UNLESS OTHERWISE NOTED. IT IS THE RESPONSIBILITY OF THE RESOURCE THAT IS PERFORMING THE INSTALLATION OF THE PROPOSED CIVIL WORKS TO PROVIDE BC HYDRO WITH A RECORD DRAWING(S) OF THE CONSTRUCTION. THE RECORD DRAWING(S) MUST BE RECEIVED AND ACCEPTED BEFORE ELECTRICAL WORK WILL COMMENCE.

CUSTOM NOTES HERE IF REQUIRED

**ENGINEERING NOTES**

UNLESS NOTED OTHERWISE, ENGINEERING CONTENT ON THIS DRAWING HAS BEEN PRODUCED FOLLOWING A DOCUMENTED BC HYDRO QUALITY MANAGEMENT PROCESS USING BC HYDRO ENGINEERING STANDARDS AUTHENTICATED BY PROFESSIONALS OF RECORD UNDER PERMIT TO PRACTICE NUMBER 1002449

**CIVIL PLAN LEGEND:**

BC HYDRO RESPONSIBILITY	CUSTOMER RESPONSIBILITY
NEW DUCT	EXISTING DUCT
FIELD COMPLETED DUCT	
SERVICE BOX	
TERMINAL POLE	
LOW PROFILE TRANSFORMER (LPT-PYRAMID PAD)	
LOW PROFILE TRANSFORMER (LPT)	
PAD MOUNT TRANSFORMER (PMT)	
3Ø & 1Ø JUNCTION & PULL BOXES (332, 632, 832 & 1232)	
PRECAST MANHOLE	
VISTA SWITCH SUBMERSIBLE (VSWB)	
VISTA SWITCH ABOVE GROUND (VSWA)	

REFER TO ESS3 AND ESS4 UNDERGROUND STANDARDS



**SOUTH INTERIOR GOLDEN POWER DISTRICT UNDERGROUND DUCT AND STRUCTURES FOR KICKING HORSE BRIDGE - OH LINE RELOCATION 10 AVENUE, 6 STREET N AND 9 STREET S, GOLDEN BC SHEET 2 OF 5**

DATE	2023NOV30	DIST	DRAWING NUMBER	152-U07-07031	REPORT NUMBER	FIG NO	SIZE	REV	2
------	-----------	------	----------------	---------------	---------------	--------	------	-----	---

NOT TO BE REPRODUCED WITHOUT THE PERMISSION OF BC HYDRO

**\*\* CAUTION \*\***  
 ENERGIZED CABLES.  
 BChydro APPROVED SAFETY WATCHER REQUIRED.

**\*\* CAUTION \*\***  
 ADDITIONAL POLE STABILITY MAY BE REQUIRED  
<https://www.bchydro.com/accounts-billing/electrical-connections/distribution-standards.html>  
 ESS5 E3-04 GUIDE FOR CIVIL EXCAVATION NEAR DISTRIBUTION POLES

**NOT FOR CONSTRUCTION**  
**ISSUED FOR REVIEW**

**UNDERGROUND UTILITY CHECKS**

Utility	Within 1m of Plant Location (as per Design BC 1 Call) Y/N
Gas	
Water	Y
Sanitary Sewer	Y
Storm Sewer	Y
Telephone	Y
Cable	Y
Electrical	Y
Other	
Design BC 1 Call #	20230408166
Construction BC 1 Call #	
Construction BC 1 Call Renewal Date	

For Mechanical Excavation within 1 metre of plant, utilities must be exposed by hand digging, unless the utility / pipeline owner requested a different excavation method.  
 Design BC 1 Call Ticket number valid for planning purposes only. Ticket refresh by a Construction BC 1 Call must be completed.

**DISCLAIMER**  
 THIS DRAWING IS THE PROPERTY OF BC HYDRO AND SHALL NOT BE USED, REUSED OR REPRODUCED WITHOUT THE CONSENT OF BC HYDRO. BC HYDRO WILL NOT BE HELD RESPONSIBLE FOR THE IMPROPER OR UNAUTHORIZED USE OF THIS DRAWING AND WILL NOT BE LIABLE FOR ANY LOSSES OR OTHER CONSEQUENCES RESULTING FROM THE USE OR RELIANCE UPON, OR ANY CHANGES MADE TO THIS DRAWING. PLEASE NOTE THAT BC HYDRO DOES NOT ASSUME RESPONSIBILITY FOR THE ACCURACY OR COMPLETENESS OF THE CONTENTS WHETHER SHOWN OR OMITTED FROM THIS DRAWING.

PLAN SCALE: 0 10m  
 PHASE 2 1:250

**\*\* CAUTION \*\***  
 ADDITIONAL POLE STABILITY MAY BE REQUIRED  
<https://www.bchydro.com/accounts-billing/electrical-connections/distribution-standards.html>  
 ESS5 E3-04 GUIDE FOR CIVIL EXCAVATION NEAR DISTRIBUTION POLES

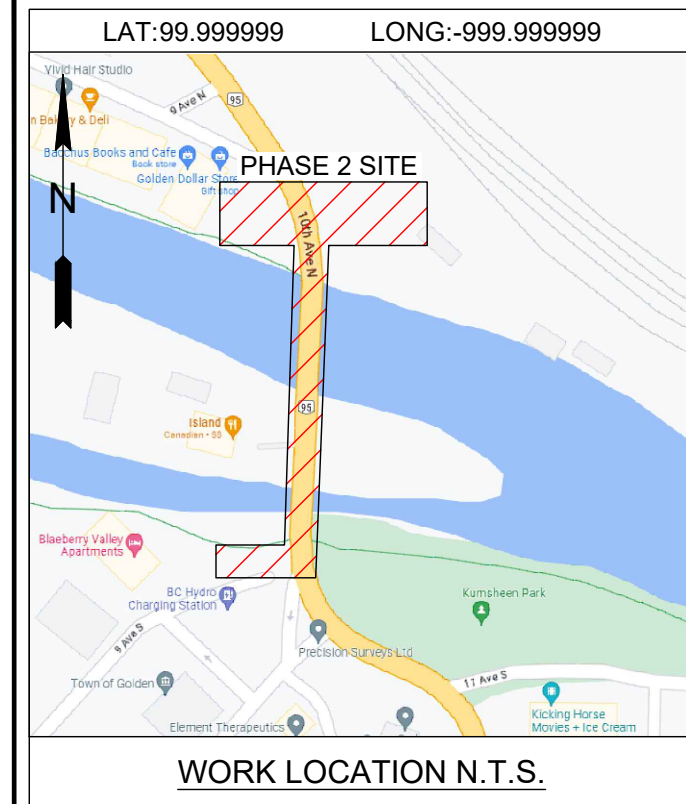
C:\Users\Fernando.Bustamante\OneDrive - ZE PowerGroup Inc\4947012\_10\_AVE\_6 ST N AND 9 Golden BC - 152-U07-07031\03-Drafting\Civil\152-U07-07031\_BF41.1.dwg  
 Drawing Unit = Metric (6)  
 FERNANDO BUSTAMANTE  
 11/30/2023 2:27 PM

DESIGN NUMBER	0004317755	DSGN	J.FIDEL
WORK ORDER NUMBER	02353196	INDEF CHK	
CSA S250 ACCURACY NAD83- 10UTM		DFTG CHK	F.BUSTAMANTE (ZE)
BASE ACCURACY LEVEL: 4 +/- 1000 mm		DFTG CHK	A.TERENCIO (ZE)
ASB ACCURACY LEVEL: 4 +/- 1000 mm		INSP	
		REV	
		ACPT	

NO	DRAWING NUMBER	DRAWING TITLE	REMARKS
2			DESIGN: 0004317755 - RE - ISSUED FOR REVIEW
1			DESIGN: 0004317755 - ISSUED FOR CONSTRUCTION
0			DESIGN: 0004317755 - NEW DRAWING

NO	REVISIONS





**WORK LOCATION N.T.S.**

**BC ONE CALL**

CALL BEFORE YOU DIG  
1-800-474-6886

CALL AT LEAST 3 FULL WORKING DAYS BEFORE YOU PLAN TO DIG

- CIVIL SPEC. 1323 NOTES:**
- BC HYDRO UNDERGROUND CIVIL INSPECTOR MUST BE NOTIFIED 48 HOURS PRIOR TO CONSTRUCTION.
  - ALL WORK TO BE PERFORMED IN ACCORDANCE WITH CLASS OF WORK SPECIFICATION 1323 AND BC HYDRO UNDERGROUND DISTRIBUTION ENGINEERING STANDARDS SERIES ES53 AND ES54.
  - ANY CHANGES NEED TO HAVE PRIOR APPROVAL OF BC HYDRO CIVIL INSPECTOR.
  - UNLESS OTHERWISE NOTED ON TRENCH DETAILS OR REQUIRED PER ES 54 H0-02.02, ALL CONDUIT INSTALLATION FOR BC HYDRO ON PUBLIC OR PRIVATE PROPERTY SHOULD HAVE MIN. 0.9m COVER AND ANY FACTORY BEND MUST HAVE A MIN. RADIUS OF 0.9m.
  - ALL UTILITIES (EXCEPT TELUS) MUST MAINTAIN A 0.9m HORIZONTAL AND 0.3m VERTICAL SEPARATION FROM BC HYDRO DUCT UNLESS DIRECTED OTHERWISE BY BC HYDRO CIVIL INSPECTOR.
  - OTHER UTILITIES SHOWN ON THE CIVIL DRAWING ARE FOR REFERENCE ONLY. PROVE LOCATION OF ALL UTILITIES IN THE WORK AREA BEFORE CONSTRUCTION. FOR CURRENT INFORMATION CONTACT BC ONE CALL.
  - ALL OFFSETS INDICATE CENTERLINE OF BC HYDRO PLANT.
  - METRES EXPRESSED IN DECIMALS, MILLIMETRES IN WHOLE NUMBERS.
  - TRANSFORMER MUST BE A MIN. OF 1.5m BEHIND NON-MOUNTABLE CURB OR PROTECTED. FINAL NUMBER AND LOCATION OF PROTECTION POSTS TO BE DETERMINED IN THE FIELD BY BC HYDRO CIVIL INSPECTOR.
  - FOR TRANSFORMER PAD COUNTERPOISE CLEARANCES TO OTHER UTILITIES AND UNDERGROUND CONDUCTIVE SURFACES, SEE ES54.
  - MIN. OFFSET FOR BC HYDRO DUCTS, IN JOINT TRENCH, FROM PROPERTY LINE IS 1.2m, UNLESS OTHERWISE NOTED.
  - STUB SERVICE DUCT 1.0m FROM PROPERTY CORNER AND 1.0m INTO THE LOT UNLESS OTHERWISE NOTED.
  - IT IS THE RESPONSIBILITY OF THE RESOURCE THAT IS PERFORMING THE INSTALLATION OF THE PROPOSED CIVIL WORKS TO PROVIDE BC HYDRO WITH A RECORD DRAWING(S) OF THE CONSTRUCTION. THE RECORD DRAWING(S) MUST BE RECEIVED AND ACCEPTED BEFORE ELECTRICAL WORK WILL COMMENCE.

CUSTOM NOTES HERE IF REQUIRED

**UNDERGROUND UTILITY CHECKS**

Utility	Within 1m of Plant Location (as per Design BC 1 Call)	Y/N
Gas		
Water		
Sanitary Sewer		Y
Storm Sewer		Y
Telephone		Y
Cable		Y
Electrical		Y
Other		
Design BC 1 Call #	20230408166	
Construction BC 1 Call #		
Construction BC 1 Call Renewal Date		

For Mechanical Excavation within 1 metre of plant, utilities must be exposed by hand digging, unless the utility / pipeline owner requested a different excavation method.  
Design BC 1 Call Ticket number valid for planning purposes only. Ticket refresh by a Construction BC 1 Call must be completed.

**ENGINEERING NOTES**

UNLESS NOTED OTHERWISE, ENGINEERING CONTENT ON THIS DRAWING HAS BEEN PRODUCED FOLLOWING A DOCUMENTED BC HYDRO QUALITY MANAGEMENT PROCESS USING BC HYDRO ENGINEERING STANDARDS AUTHENTICATED BY PROFESSIONALS OF RECORD UNDER PERMIT TO PRACTICE NUMBER 1002449

**CIVIL PLAN LEGEND:**

BC HYDRO RESPONSIBILITY	CUSTOMER RESPONSIBILITY
NEW DUCT	EXISTING DUCT
FIELD COMPLETED DUCT	
SERVICE BOX	
TERMINAL POLE	
LOW PROFILE TRANSFORMER (LPT-PYRAMID PAD)	
LOW PROFILE TRANSFORMER (LPT)	
PAD MOUNT TRANSFORMER (PMT)	
3Ø & 1Ø JUNCTION & PULL BOXES (332, 632, 832 & 1232)	
PRECAST MANHOLE	
VISTA SWITCH SUBMERSIBLE (VSWB)	
VISTA SWITCH ABOVE GROUND (VSWA)	

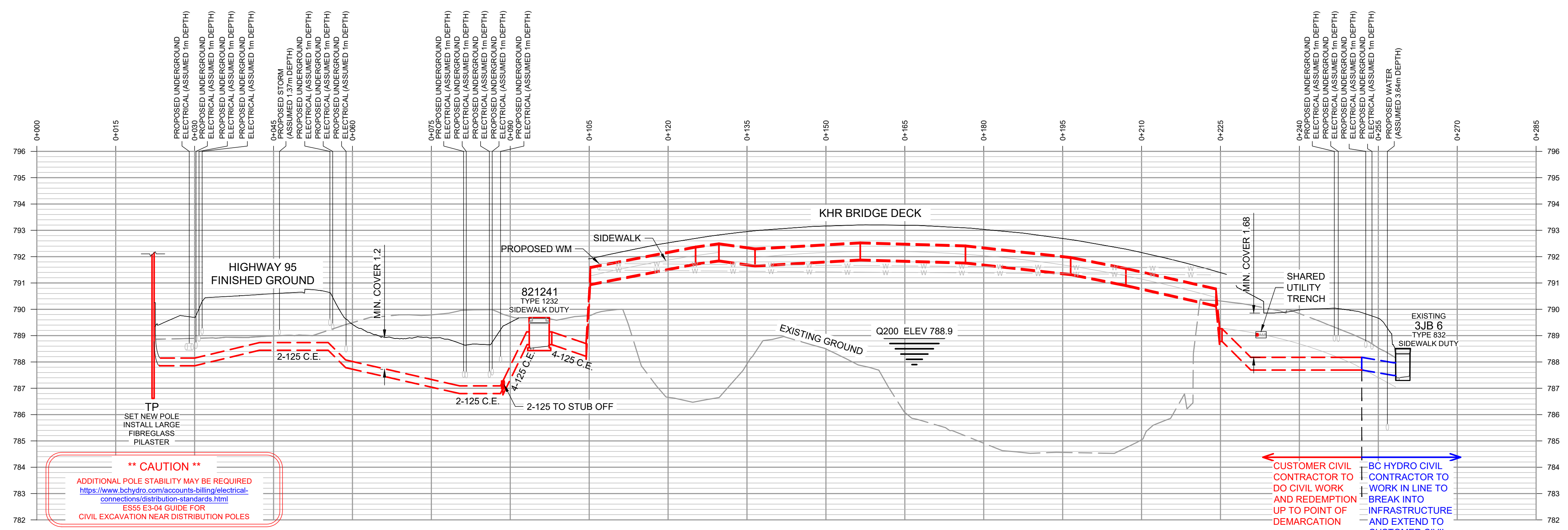
REFER TO ES53 AND ES54 UNDERGROUND STANDARDS

**DISCLAIMER**

THIS DRAWING IS THE PROPERTY OF BC HYDRO AND SHALL NOT BE USED, REUSED OR REPRODUCED WITHOUT THE CONSENT OF BC HYDRO. BC HYDRO WILL NOT BE HELD RESPONSIBLE FOR THE IMPROPER OR UNAUTHORIZED USE OF THIS DRAWING AND WILL NOT BE LIABLE FOR ANY LOSSES OR OTHER CONSEQUENCES RESULTING FROM THE USE OR RELIANCE UPON, OR ANY CHANGES MADE TO THIS DRAWING. PLEASE NOTE THAT BC HYDRO DOES NOT ASSUME RESPONSIBILITY FOR THE ACCURACY OR COMPLETENESS OF THE CONTENTS WHETHER SHOWN OR OMITTED FROM THIS DRAWING.

**NOT FOR CONSTRUCTION**

**ISSUED FOR REVIEW**

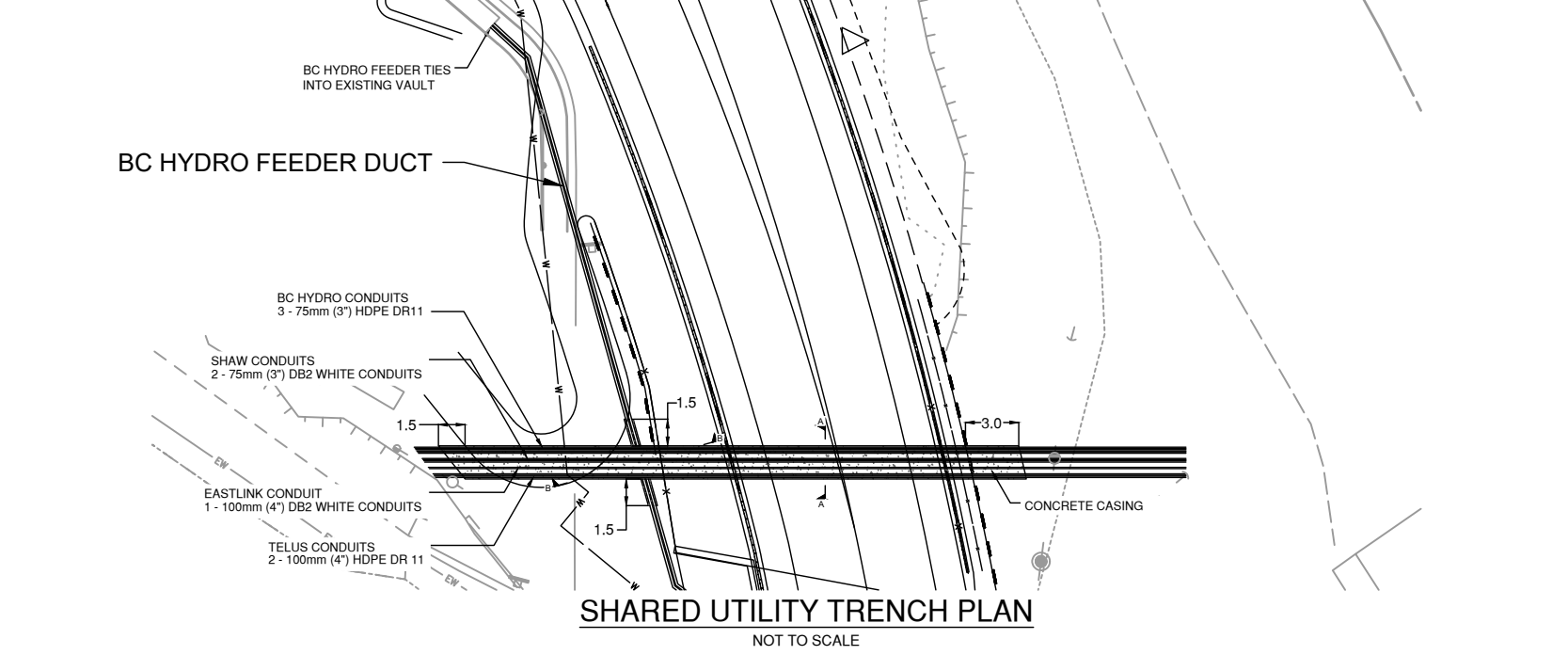
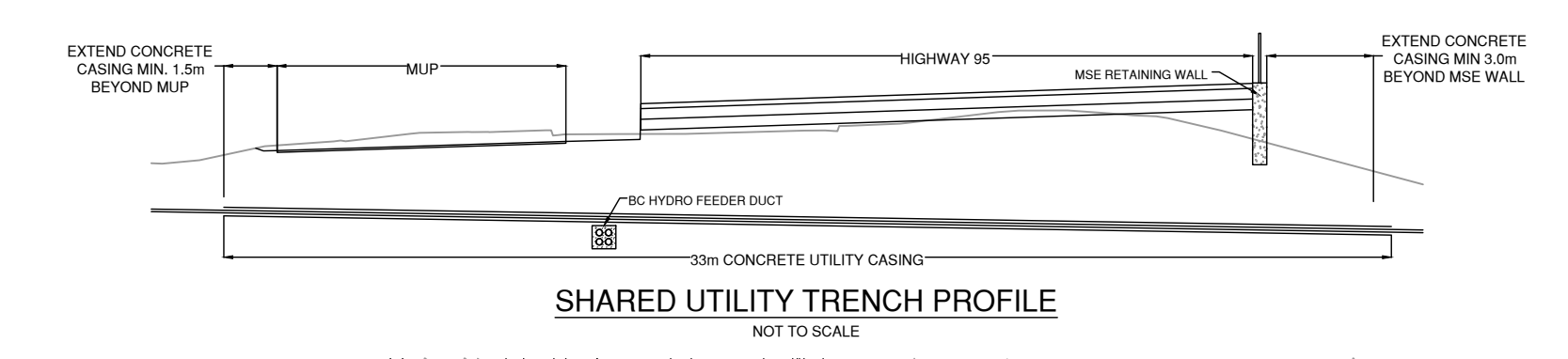
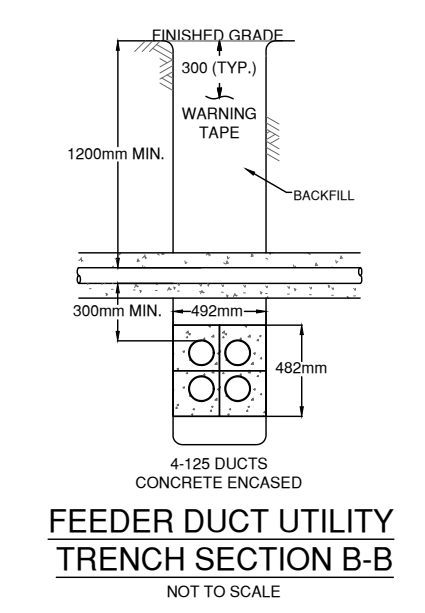
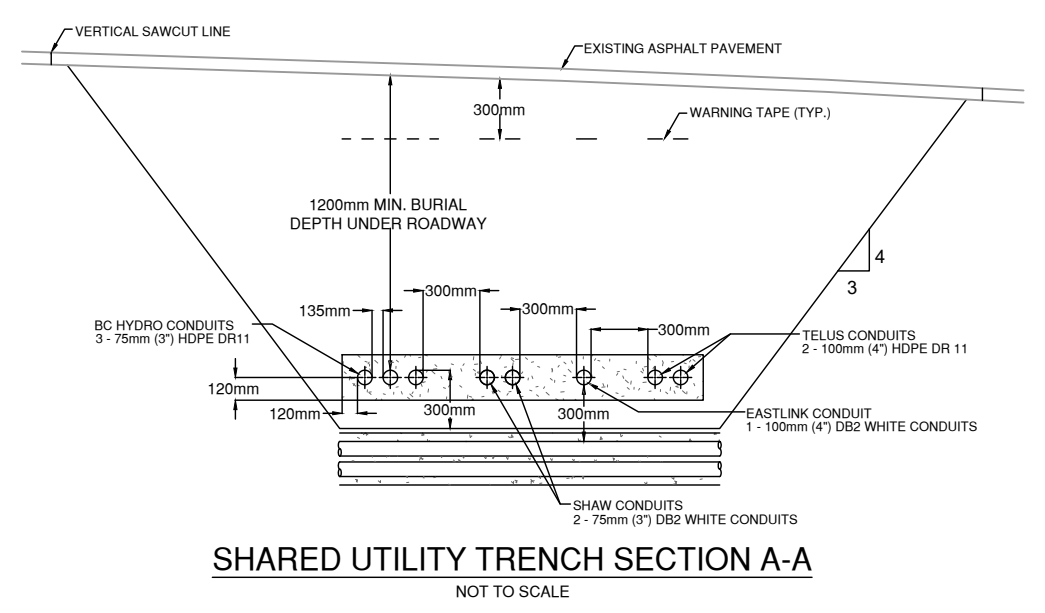


**\*\* CAUTION \*\***

ADDITIONAL POLE STABILITY MAY BE REQUIRED  
<https://www.bchydro.com/accounts-billing/electrical-connections/distribution-standards.html>  
ESS5 E3-04 GUIDE FOR CIVIL EXCAVATION NEAR DISTRIBUTION POLES

**PLAN** SCALE: 1:500

0 25m SCALE: 1:100 0 5m



C:\Users\fernando.bustamante\OneDrive - ZE PowerGroup Inc\4947012\_10\_AVE\_6 ST N AND 9 Golden BC - 152-U07-07031\03-Drafting\Civil\152-U07-07031\_BF41.1.dwg  
Drawing Unit = Metric (6)  
FERNANDO BUSTAMANTE  
11/30/2023 2:27 PM

NO	DRAWING NUMBER	DRAWING TITLE	REVISIONS
2		DESIGN: 0004317755 - RE - ISSUED FOR REVIEW	
1		DESIGN: 0004317755 - ISSUED FOR CONSTRUCTION	
0		DESIGN: 0004317755 - NEW DRAWING	

DESIGN NUMBER	0004317755	DSGN	J.FIDEL
WORK ORDER NUMBER	02353196	INDEF CHK	
CSA S250 ACCURACY NAD83 - 10UTM		DFTG CHK	F.BUSTAMANTE (ZE)
BASE ACCURACY LEVEL: 4 +/- 1000 mm		INSP	A.TERENCIO (ZE)
ASB ACCURACY LEVEL: 4 +/- 1000 mm		REV	
		ACPT	

DATE	2023NOV30	DIST		DRAWING NUMBER	152-U07-07031	REPORT NUMBER		FIG NO	D	SIZE		REV	2
------	-----------	------	--	----------------	---------------	---------------	--	--------	---	------	--	-----	---

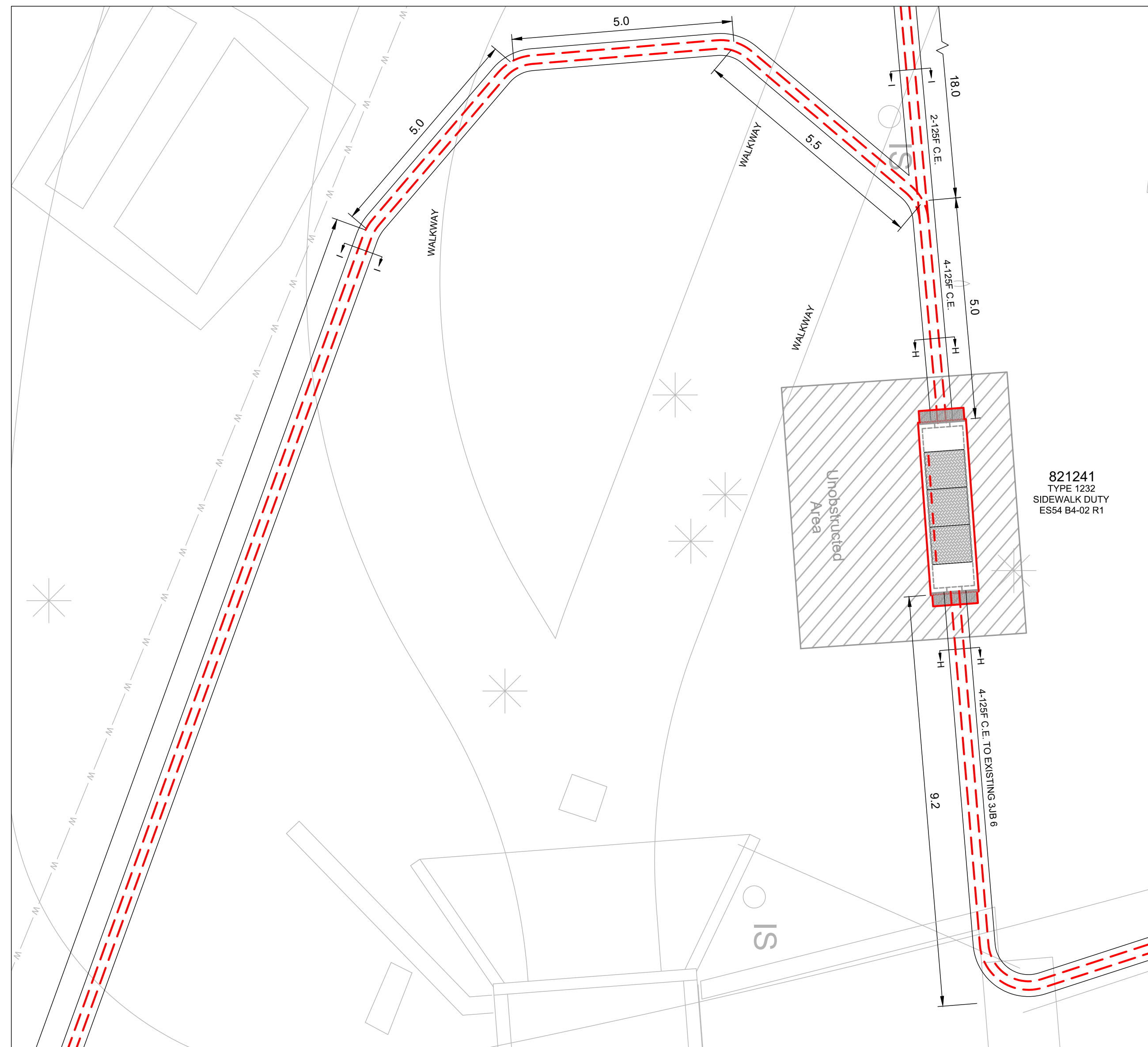
**BC Hydro**

**SOUTH INTERIOR GOLDEN POWER DISTRICT UNDERGROUND DUCT AND STRUCTURES FOR KICKING HORSE BRIDGE - OH LINE RELOCATION 10 AVENUE, 6 STREET N AND 9 STREET S, GOLDEN BC SHEET 3 OF 5**

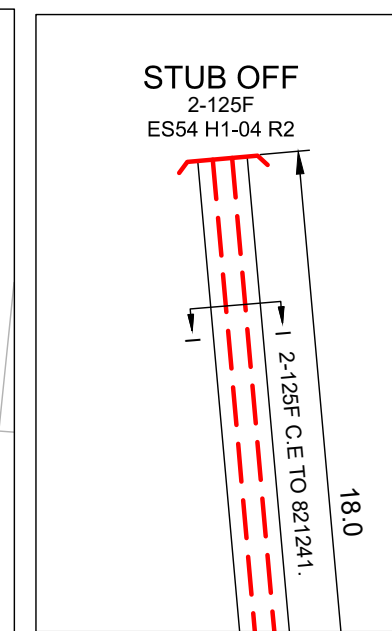




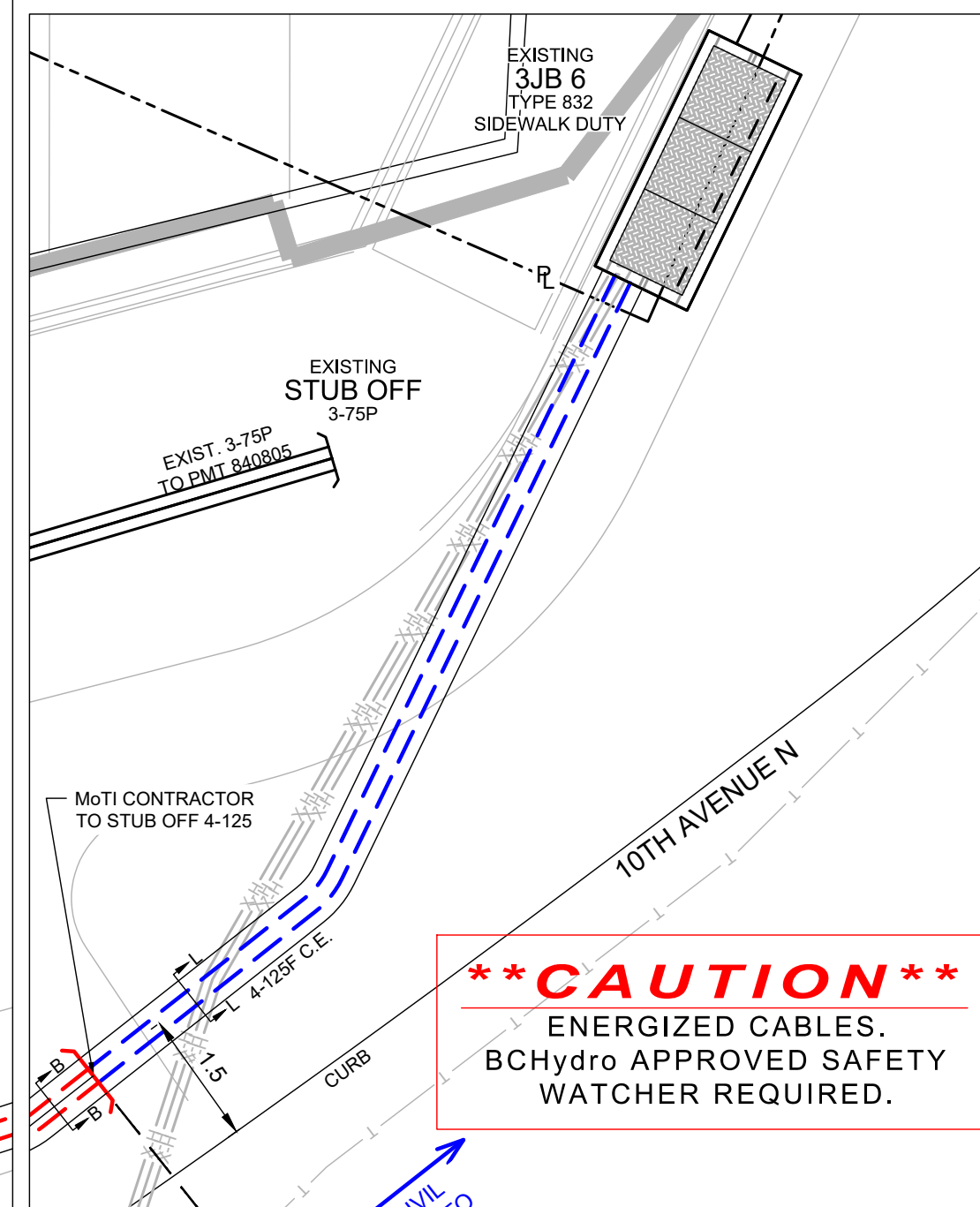
821241 DETAIL



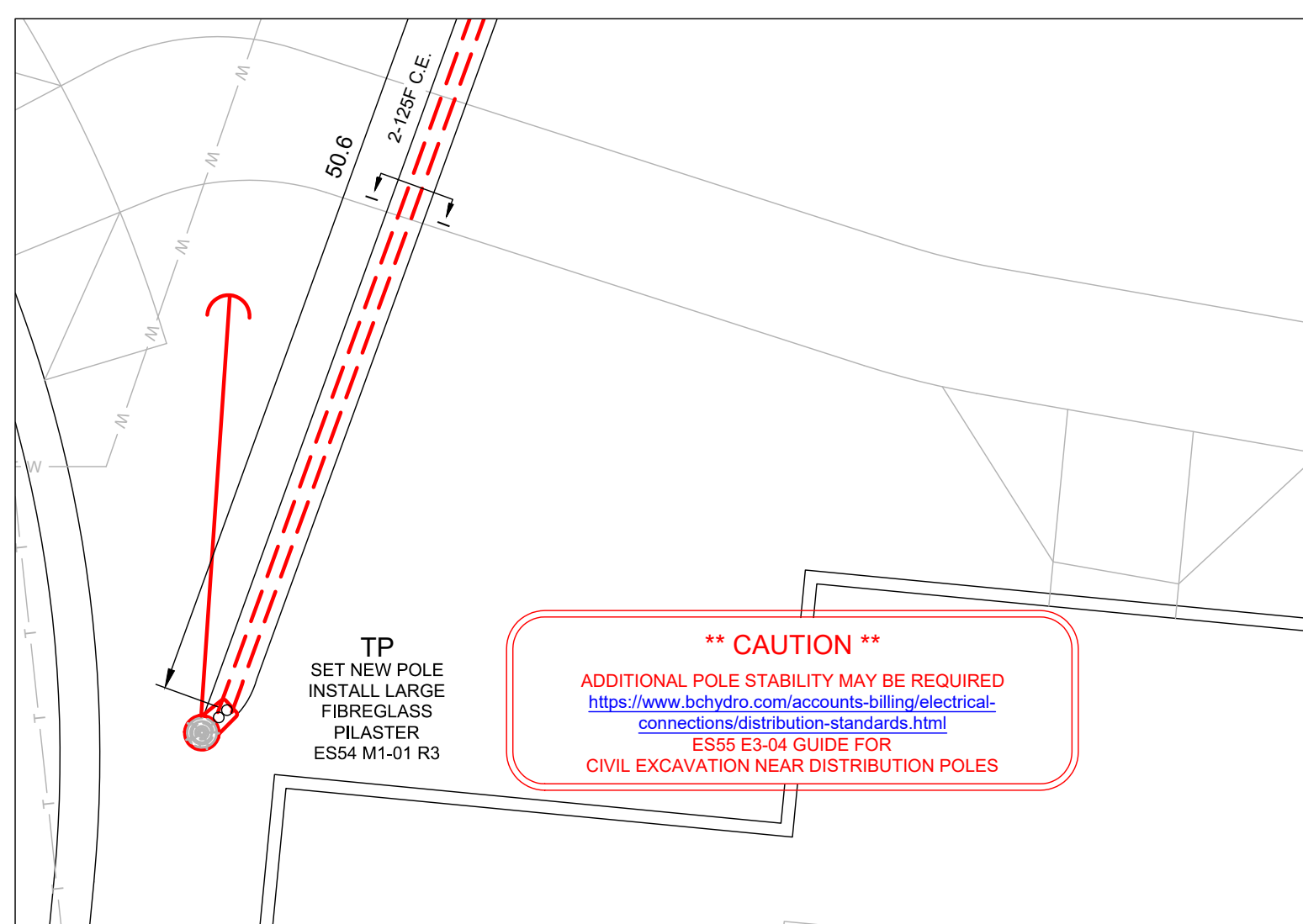
STUB OFF DETAIL



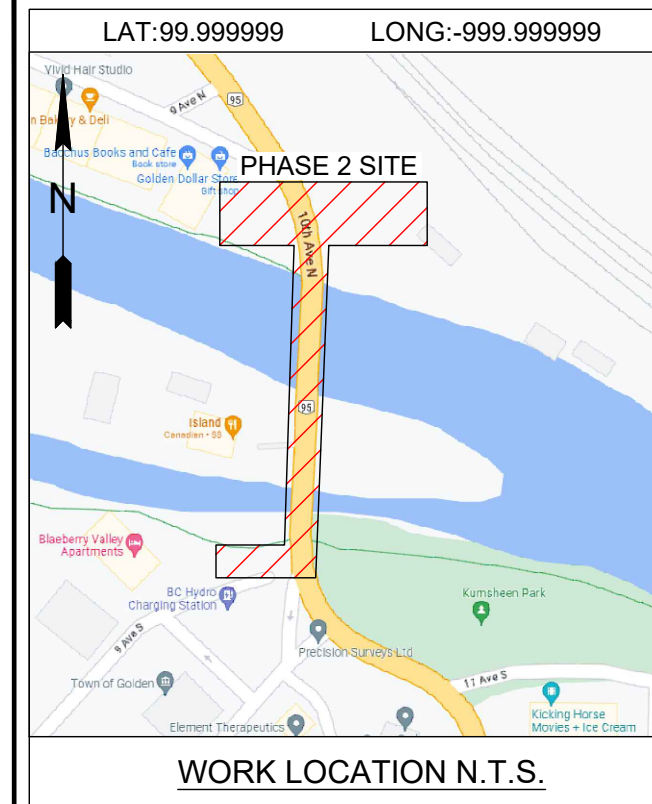
EXISTING 3JB 06 DETAIL



TP DETAIL



DETAILS N.T.S



WORK LOCATION N.T.S.

BC ONE CALL

CALL BEFORE YOU DIG  
1-800-474-6886  
CALL AT LEAST 3 FULL WORKING DAYS BEFORE YOU PLAN TO DIG



CIVIL SPEC. 1323 NOTES:

1. BC HYDRO UNDERGROUND CIVIL INSPECTOR MUST BE NOTIFIED 48 HOURS PRIOR TO CONSTRUCTION.
2. ALL WORK TO BE PERFORMED IN ACCORDANCE WITH CLASS OF WORK SPECIFICATION 1323 AND BC HYDRO UNDERGROUND DISTRIBUTION ENGINEERING STANDARDS SERIES ES53 AND ES54.
3. ANY CHANGES NEED TO HAVE PRIOR APPROVAL OF BC HYDRO CIVIL INSPECTOR.
4. UNLESS OTHERWISE NOTED ON TRENCH DETAILS OR REQUIRED PER ES 54 H0-02.02, ALL CONDUIT INSTALLATION FOR BC HYDRO ON PUBLIC OR PRIVATE PROPERTY SHOULD HAVE MIN. 0.9m COVER AND ANY FACTORY BEND MUST HAVE A MIN. RADIUS OF 0.9m.
5. ALL UTILITIES (EXCEPT TELUS) MUST MAINTAIN A 0.9m HORIZONTAL AND 0.3m VERTICAL SEPARATION FROM BC HYDRO DUCT UNLESS DIRECTED OTHERWISE BY BC HYDRO CIVIL INSPECTOR.
6. OTHER UTILITIES SHOWN ON THE CIVIL DRAWING ARE FOR REFERENCE ONLY. PROVE LOCATION OF ALL UTILITIES IN THE WORK AREA BEFORE CONSTRUCTION. FOR CURRENT INFORMATION CONTACT BC ONE CALL.
7. ALL OFFSETS INDICATE CENTERLINE OF BC HYDRO PLANT.
8. METRES EXPRESSED IN DECIMALS, MILLIMETRES IN WHOLE NUMBERS.
9. TRANSFORMER MUST BE A MIN. OF 1.5m BEHIND NON-MOUNTABLE CURB OR PROTECTED. FINAL NUMBER AND LOCATION OF PROTECTION POSTS TO BE DETERMINED IN THE FIELD BY BC HYDRO CIVIL INSPECTOR.
10. FOR TRANSFORMER PAD COUNTERPOISE CLEARANCES TO OTHER UTILITIES AND UNDERGROUND CONDUCTIVE SURFACES, SEE ES54.
11. MIN. OFFSET FOR BC HYDRO DUCTS, IN JOINT TRENCH, FROM PROPERTY LINE IS 1.2m, UNLESS OTHERWISE NOTED.
12. STUB SERVICE DUCT 1.0m FROM PROPERTY CORNER AND 1.0m INTO THE LOT UNLESS OTHERWISE NOTED. IT IS THE RESPONSIBILITY OF THE RESOURCE THAT IS PERFORMING THE INSTALLATION OF THE PROPOSED CIVIL WORKS TO PROVIDE BC HYDRO WITH A RECORD DRAWING(S) OF THE CONSTRUCTION. THE RECORD DRAWING(S) MUST BE RECEIVED AND ACCEPTED BEFORE ELECTRICAL WORK WILL COMMENCE.

CUSTOM NOTES HERE IF REQUIRED

UNDERGROUND UTILITY CHECKS

	Within 1m of Plant Location (as per Design BC 1 Call)	Y/N
Gas		
Water	Y	
Sanitary Sewer	Y	
Storm Sewer	Y	
Telephone	Y	
Cable	Y	
Electrical	Y	
Other		
Design BC 1 Call #	20230408166	
Construction BC 1 Call #		
Call Renewal Date		

For Mechanical Excavation within 1 metre of plant, utilities must be exposed by hand digging, unless the utility / pipeline owner requested a different excavation method.  
Design BC 1 Call Ticket number valid for planning purposes only. Ticket refresh by a Construction BC 1 Call must be completed.

ENGINEERING NOTES

UNLESS NOTED OTHERWISE, ENGINEERING CONTENT ON THIS DRAWING HAS BEEN PRODUCED FOLLOWING A DOCUMENTED BC HYDRO QUALITY MANAGEMENT PROCESS USING BC HYDRO ENGINEERING STANDARDS AUTHENTICATED BY PROFESSIONALS OF RECORD UNDER PERMIT TO PRACTICE NUMBER 1002449

CIVIL PLAN LEGEND:

BC HYDRO RESPONSIBILITY	CUSTOMER RESPONSIBILITY
NEW DUCT	EXISTING DUCT
FIELD COMPLETED DUCT	
SERVICE BOX	
TERMINAL POLE	
LOW PROFILE TRANSFORMER (LPT-PYRAMID PAD)	
LOW PROFILE TRANSFORMER (LPT)	
PAD MOUNT TRANSFORMER (PMT)	
3Ø & 1Ø JUNCTION & PULL BOXES (332, 632, 832 & 1232)	
PRECAST MANHOLE	
VISTA SWITCH SUBMERSIBLE (VSWB)	
VISTA SWITCH ABOVE GROUND (VSWA)	

REFER TO ES53 AND ES54 UNDERGROUND STANDARDS

DISCLAIMER

THIS DRAWING IS THE PROPERTY OF BC HYDRO AND SHALL NOT BE USED, REUSED OR REPRODUCED WITHOUT THE CONSENT OF BC HYDRO. BC HYDRO WILL NOT BE HELD RESPONSIBLE FOR THE IMPROPER OR UNAUTHORIZED USE OF THIS DRAWING AND WILL NOT BE LIABLE FOR ANY LOSSES OR OTHER CONSEQUENCES RESULTING FROM THE USE OR RELIANCE UPON, OR ANY CHANGES MADE TO, THIS DRAWING. PLEASE NOTE THAT BC HYDRO DOES NOT ASSUME RESPONSIBILITY FOR THE ACCURACY OR COMPLETENESS OF THE CONTENTS WHETHER SHOWN OR OMITTED FROM THIS DRAWING.

NOT FOR CONSTRUCTION  
ISSUED FOR REVIEW

BC HYDRO CIVIL CONTRACTOR TO DO CIVIL WORK AND REDEMPTION UP TO POINT OF DEMARCATION  
BC HYDRO CIVIL CONTRACTOR TO WORK INTO INFRASTRUCTURE AND EXTEND TO CUSTOMER CIVIL STUB OFFS

C:\Users\fernando.bustamante\OneDrive - ZE PowerGroup\OneDrive - ZE PowerGroup\Incl\4947012\_10\_AVE\_6 ST N AND 9 Golden BC - 152-U07-07031\03-Drafting\Civil\152-U07-07031\_8F41.1.dwg  
Drawing Unit = Metric (6)  
FERNANDO BUSTAMANTE  
11/30/2023 2:27 PM

DESIGN NUMBER	0004317755	DSGN	J.FIDEL
WORK ORDER NUMBER	02353196	INDEF CHK	
CSA S250 ACCURACY NAD83 - 10UTM		DFTG	F.BUSTAMANTE (ZE)
BASE ACCURACY LEVEL:	4 +/- 1000 mm	DFTG CHK	A.TERENCIO (ZE)
ASB ACCURACY LEVEL:	4 +/- 1000 mm	INSP	
		REV	
		ACPT	

DATE	2023NOV30	DIST	
DRAWING NUMBER	152-U07-07031	REPORT NUMBER	
FIG NO	D	SIZE	2

NO	DRAWING NUMBER	DRAWING TITLE	REVISIONS
2			DESIGN: 0004317755 - RE - ISSUED FOR REVIEW
1			DESIGN: 0004317755 - ISSUED FOR CONSTRUCTION
0			DESIGN: 0004317755 - NEW DRAWING

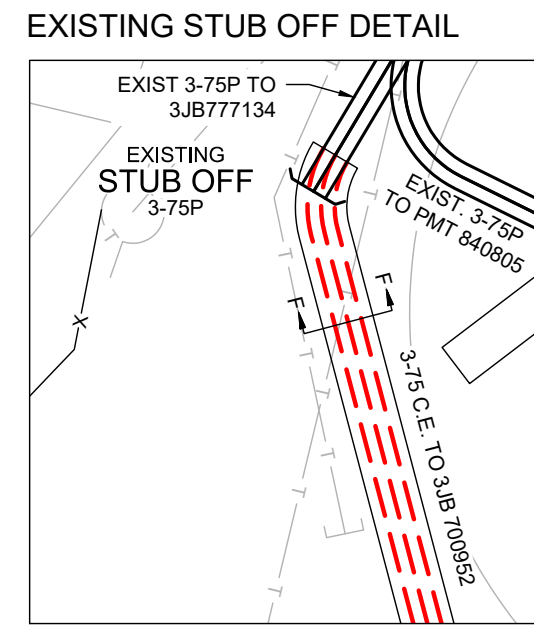
  

NO	DRAWING NUMBER	DRAWING TITLE	REVISIONS

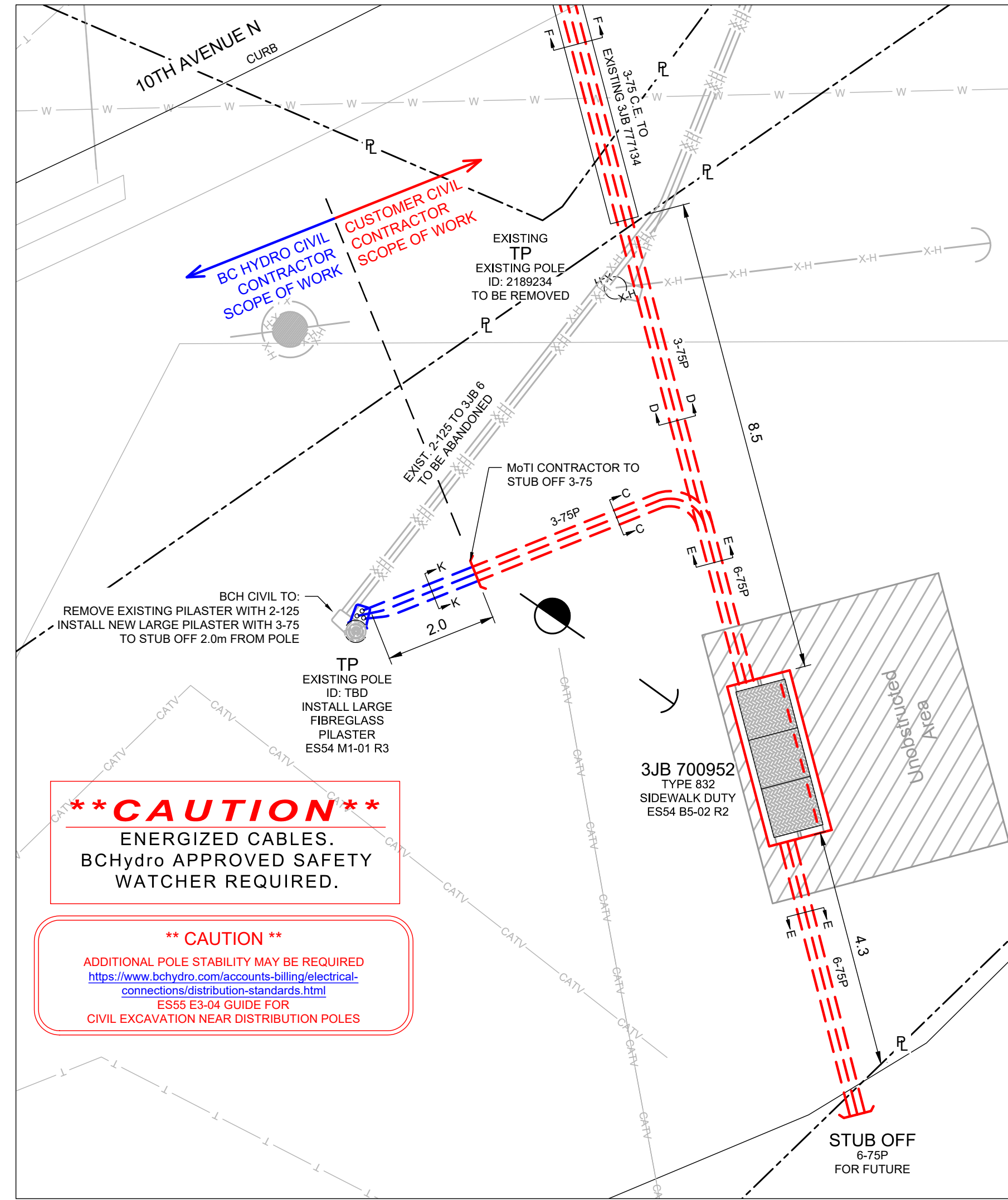


SOUTH INTERIOR GOLDEN POWER DISTRICT UNDERGROUND DUCT AND STRUCTURES FOR KICKING HORSE BRIDGE - OH LINE RELOCATION 10 AVENUE, 6 STREET N AND 9 STREET S, GOLDEN BC SHEET 4 OF 5





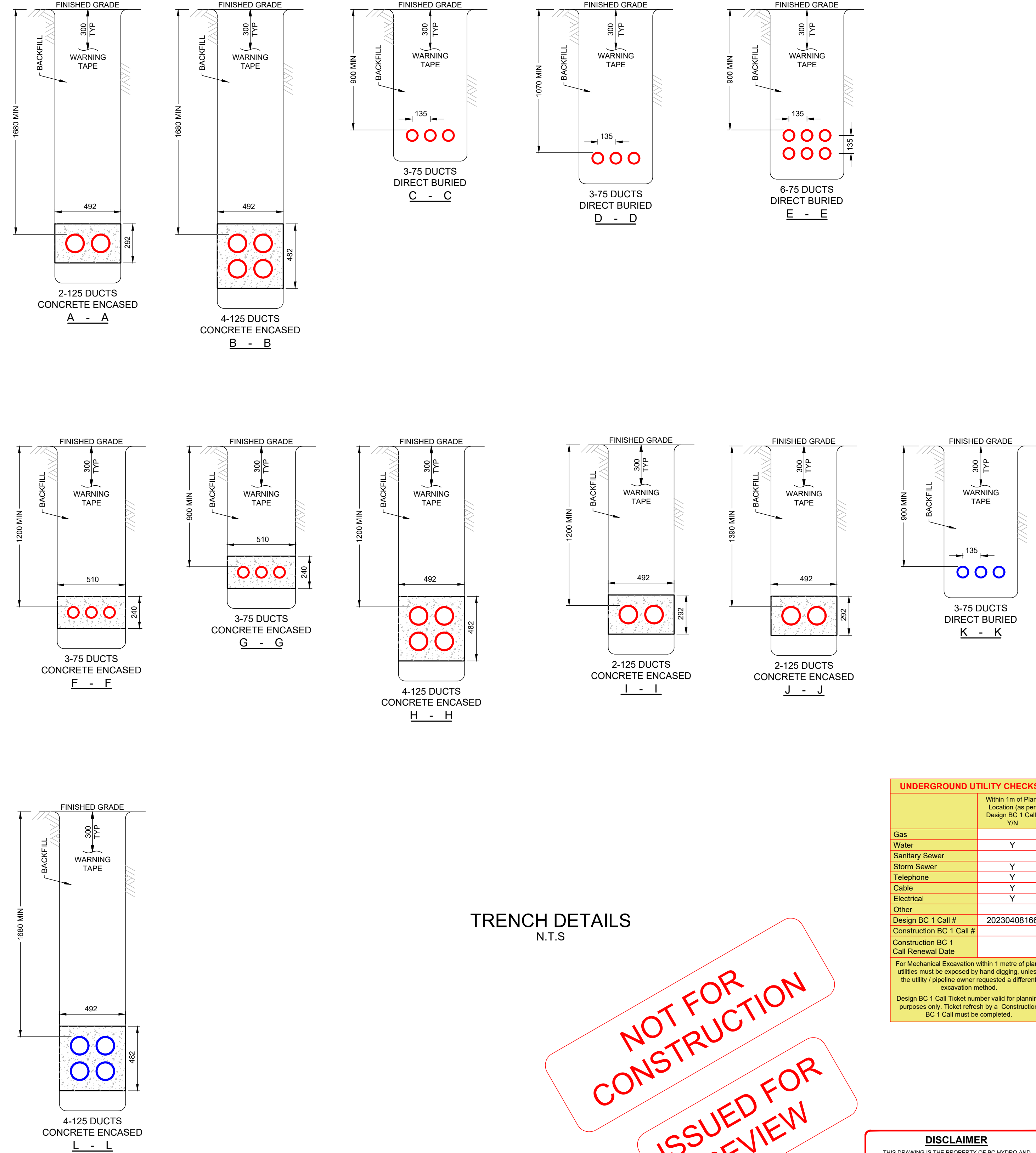
3JB 700952 AND TP DETAIL



**DETAILS**  
N.T.S

**\*\* CAUTION \*\***  
ENERGIZED CABLES.  
BCHydro APPROVED SAFETY  
WATCHER REQUIRED.

**\*\* CAUTION \*\***  
ADDITIONAL POLE STABILITY MAY BE REQUIRED  
<https://www.bchydro.com/accounts-billing/electrical-connections/distribution-standards.html>  
ES55 E3-04 GUIDE FOR  
CIVIL EXCAVATION NEAR DISTRIBUTION POLES



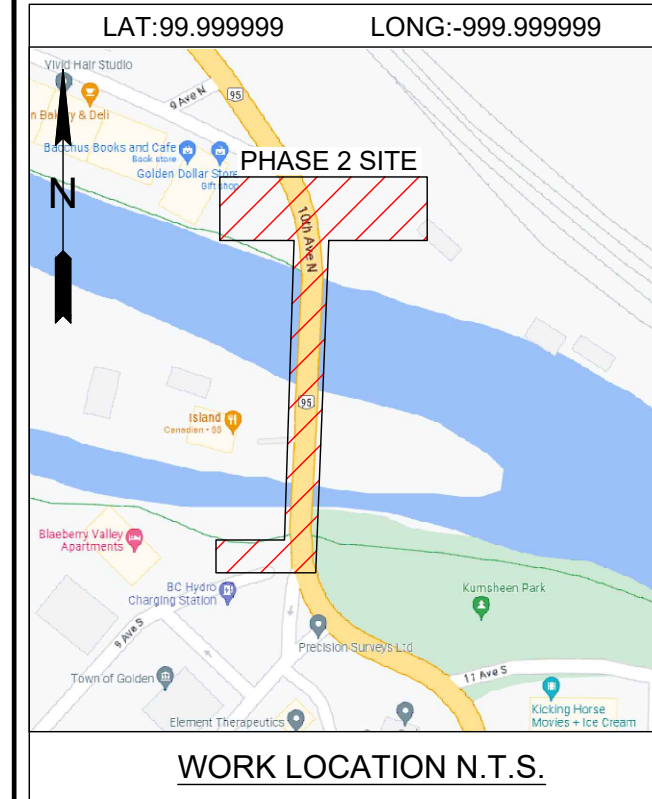
**NOT FOR CONSTRUCTION**  
**ISSUED FOR REVIEW**

**UNDERGROUND UTILITY CHECKS**

	Within 1m of Plant Location (as per Design BC 1 Call)
Gas	Y/N
Water	Y
Sanitary Sewer	Y
Storm Sewer	Y
Telephone	Y
Cable	Y
Electrical	Y
Other	
Design BC 1 Call #	20230408166
Construction BC 1 Call #	
Construction BC 1 Call Renewal Date	

For Mechanical Excavation within 1 metre of plant, utilities must be exposed by hand digging, unless the utility / pipeline owner requested a different excavation method.  
Design BC 1 Call Ticket number valid for planning purposes only. Ticket refresh by a Construction BC 1 Call must be completed.

**DISCLAIMER**  
THIS DRAWING IS THE PROPERTY OF BC HYDRO AND SHALL NOT BE USED, REUSED OR REPRODUCED WITHOUT THE CONSENT OF BC HYDRO. BC HYDRO WILL NOT BE HELD RESPONSIBLE FOR THE IMPROPER OR UNAUTHORIZED USE OF THIS DRAWING AND WILL NOT BE LIABLE FOR ANY LOSSES OR OTHER CONSEQUENCES RESULTING FROM THE USE OR RELIANCE UPON, OR ANY CHANGES MADE TO, THIS DRAWING. PLEASE NOTE THAT BC HYDRO DOES NOT ASSUME RESPONSIBILITY FOR THE ACCURACY OR COMPLETENESS OF THE CONTENTS WHETHER SHOWN OR OMITTED FROM THIS DRAWING.



**BC ONE CALL**  
CALL BEFORE YOU DIG  
1-800-474-6886  
CALL AT LEAST 3 FULL WORKING DAYS BEFORE YOU PLAN TO DIG

- CIVIL SPEC. 1323 NOTES:**
- BC HYDRO UNDERGROUND CIVIL INSPECTOR MUST BE NOTIFIED 48 HOURS PRIOR TO CONSTRUCTION.
  - ALL WORK TO BE PERFORMED IN ACCORDANCE WITH CLASS OF WORK SPECIFICATION 1323 AND BC HYDRO UNDERGROUND DISTRIBUTION ENGINEERING STANDARDS SERIES ES53 AND ES54.
  - ANY CHANGES NEED TO HAVE PRIOR APPROVAL OF BC HYDRO CIVIL INSPECTOR.
  - UNLESS OTHERWISE NOTED ON TRENCH DETAILS OR REQUIRED PER ES 54 H0-02.02, ALL CONDUIT INSTALLATION FOR BC HYDRO ON PUBLIC OR PRIVATE PROPERTY SHOULD HAVE MIN. 0.9m COVER AND ANY FACTORY BEND MUST HAVE A MIN. RADIUS OF 0.9m.
  - ALL UTILITIES (EXCEPT TELUS) MUST MAINTAIN A 0.9m HORIZONTAL AND 0.3m VERTICAL SEPARATION FROM BC HYDRO DUCT UNLESS DIRECTED OTHERWISE BY BC HYDRO CIVIL INSPECTOR.
  - OTHER UTILITIES SHOWN ON THE CIVIL DRAWING ARE FOR REFERENCE ONLY. PROVE LOCATION OF ALL UTILITIES IN THE WORK AREA BEFORE CONSTRUCTION. FOR CURRENT INFORMATION CONTACT BC ONE CALL.
  - ALL OFFSETS INDICATE CENTERLINE OF BC HYDRO PLANT.
  - METRES EXPRESSED IN DECIMALS, MILLIMETRES IN WHOLE NUMBERS.
  - TRANSFORMER MUST BE A MIN. OF 1.5m BEHIND NON-MOUNTABLE CURB OR PROTECTED. FINAL NUMBER AND LOCATION OF PROTECTION POSTS TO BE DETERMINED IN THE FIELD BY BC HYDRO CIVIL INSPECTOR.
  - FOR TRANSFORMER PAD COUNTERPOISE CLEARANCES TO OTHER UTILITIES AND UNDERGROUND CONDUCTIVE SURFACES, SEE ES54.
  - MIN. OFFSET FOR BC HYDRO DUCTS, IN JOINT TRENCH, FROM PROPERTY LINE IS 1.2m, UNLESS OTHERWISE NOTED.
  - STUB SERVICE DUCT 1.0m FROM PROPERTY CORNER AND 1.0m INTO THE LOT UNLESS OTHERWISE NOTED. IT IS THE RESPONSIBILITY OF THE RESOURCE THAT IS PERFORMING THE INSTALLATION OF THE PROPOSED CIVIL WORKS TO PROVIDE BC HYDRO WITH A RECORD DRAWING(S) OF THE CONSTRUCTION. THE RECORD DRAWING(S) MUST BE RECEIVED AND ACCEPTED BEFORE ELECTRICAL WORK WILL COMMENCE.

CUSTOM NOTES HERE IF REQUIRED

**ENGINEERING NOTES**  
UNLESS NOTED OTHERWISE, ENGINEERING CONTENT ON THIS DRAWING HAS BEEN PRODUCED FOLLOWING A DOCUMENTED BC HYDRO QUALITY MANAGEMENT PROCESS USING BC HYDRO ENGINEERING STANDARDS AUTHENTICATED BY PROFESSIONALS OF RECORD UNDER PERMIT TO PRACTICE NUMBER 1002449

**CIVIL PLAN LEGEND:**

BC HYDRO RESPONSIBILITY	CUSTOMER RESPONSIBILITY
NEW DUCT	EXISTING DUCT
FIELD COMPLETED DUCT	
SERVICE BOX	
TERMINAL POLE	
LOW PROFILE TRANSFORMER (LPT-PYRAMID PAD)	
LOW PROFILE TRANSFORMER (LPT)	
PAD MOUNT TRANSFORMER (PMT)	
3Ø & 1Ø JUNCTION & PULL BOXES (332, 632, 832 & 1232)	
PRECAST MANHOLE	
VISTA SWITCH SUBMERSIBLE (VSWB)	
VISTA SWITCH ABOVE GROUND (VSWA)	

REFER TO ES53 AND ES54 UNDERGROUND STANDARDS



**SOUTH INTERIOR**  
GOLDEN POWER DISTRICT  
UNDERGROUND DUCT AND STRUCTURES FOR  
KICKING HORSE BRIDGE - OH LINE RELOCATION  
10 AVENUE, 6 STREET N AND 9 STREET S, GOLDEN BC  
SHEET 5 OF 5

C:\Users\fernando.bustamante\OneDrive - ZE PowerGroup Inc\4947012\_10\_AVE\_6\_ST\_N\_AND\_9\_GOLDEN\_BC\_152-U07-07031\03-Drafting\Civil\152-U07-07031\_8F41.1.dwg  
Drawing Unit = Metric (6)  
FERNANDO BUSTAMANTE  
11/30/2023 2:27 PM

NO	DRAWING NUMBER	DRAWING TITLE
		REFERENCE DRAWINGS

NO	REVISIONS
2	DESIGN: 0004317755 - RE - ISSUED FOR REVIEW
1	DESIGN: 0004317755 - ISSUED FOR CONSTRUCTION
0	DESIGN: 0004317755 - NEW DRAWING

DESIGN NUMBER	0004317755	DSGN	J.FIDEL
WORK ORDER NUMBER	02353196	INDEF CHK	
CSA S250 ACCURACY NAD83 - 10UTM		DFTG	F.BUSTAMANTE (ZE)
		DFTG CHK	A.TERENCIO (ZE)
BASE ACCURACY LEVEL:	4 +/- 1000 mm	INSP	
ASB ACCURACY LEVEL:	4 +/- 1000 mm	REV	
		ACPT	

DATE	2023NOV30	DIST	
DRAWING NUMBER	152-U07-07031	REPORT NUMBER	
FIG NO	D	SIZE	2

DESIGN NUMBER	0004317755	DSGN	J.FIDEL
WORK ORDER NUMBER	02353196	INDEF CHK	
CSA S250 ACCURACY NAD83 - 10UTM		DFTG	F.BUSTAMANTE (ZE)
		DFTG CHK	A.TERENCIO (ZE)
BASE ACCURACY LEVEL:	4 +/- 1000 mm	INSP	
ASB ACCURACY LEVEL:	4 +/- 1000 mm	REV	
		ACPT	