

1 SITE LIGHTING PLAN
EL1.01 SCALE 1:500

SYMBOL LEGEND:

- POLE AND LUMINAIRE ON STRUCTURE WALL
- SERVICE CABINET (NEW)
- PLASTIC JUNCTION BOX
- EXISTING LIGHT STANDARD TO REMAIN
- NEW LIGHT STANDARD
- BANNER ARM CONFIGURATION
- PLANTER ARM CONFIGURATION

ATTENTION
This drawing is prepared for the sole use of
No representations of any kind are made by Urban Systems Ltd. or its employees to any party with whom Urban Systems Ltd. does not have a contract.

WARNING
Utilities or structures shown on this drawing were compiled from information supplied by various parties and may not be complete or accurate. Expose and conclusively confirm the location in the field all underground utilities and structures indicated on this drawing, all underground utilities in the area of the proposed work and any utilities or structures reasonably apparent from an inspection of the proposed work. Urban Systems Ltd. assumes no responsibility for loss or damage caused by third party negligence or failure to comply with the above.

SURVEY INFORMATION
Prepared by:
Coordinate System:
Completion Date:

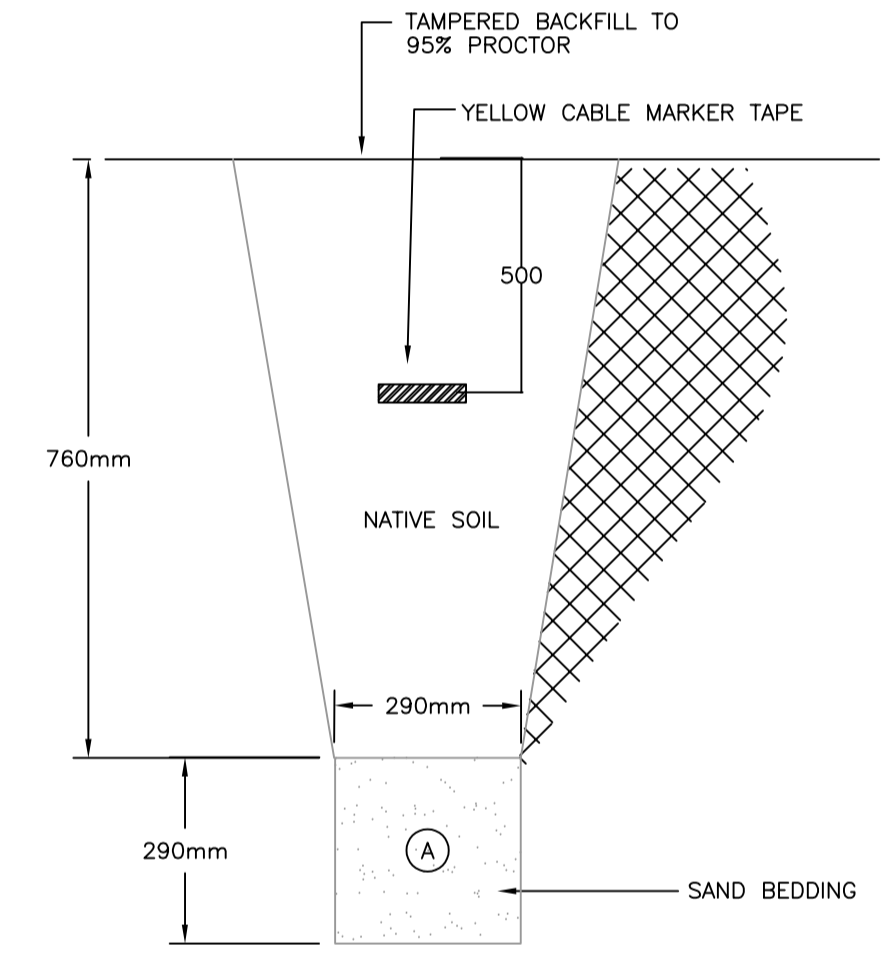
NEW PANEL

DESCRIPTION	LOAD kW	BKR SIZE	CIRCUIT			BKR SIZE	LOAD kW	DESCRIPTION
			A	B	C			
DIKE WALL LIGHT STANDARD	0.20	15A	1			15A	1.20	WATER MONITORING SYSTEM
DIKE WALL LIGHT STANDARD	0.20	15A	3			15A	1.20	WATER MONITORING SYSTEM
DIKE WALL LIGHT STANDARD	0.20	15A	5			15A		SPARE
SPARE		15A	7			15A		SPARE
SPARE		15A	9					
SPARE		15A	11					
HEATER IN PANEL		15A	15			15A		RECEPTACLE
LIGHT IN PANEL		15A	17			15A		PHOTO ELECTRIC CELL

BUS AMPS: 225A VOLTS: 120/208V PHASE: 3Ø, 4W LOCATION: AS SHOWN



2 CONDUIT STUB UP
EL1.01 SCALE N.T.S



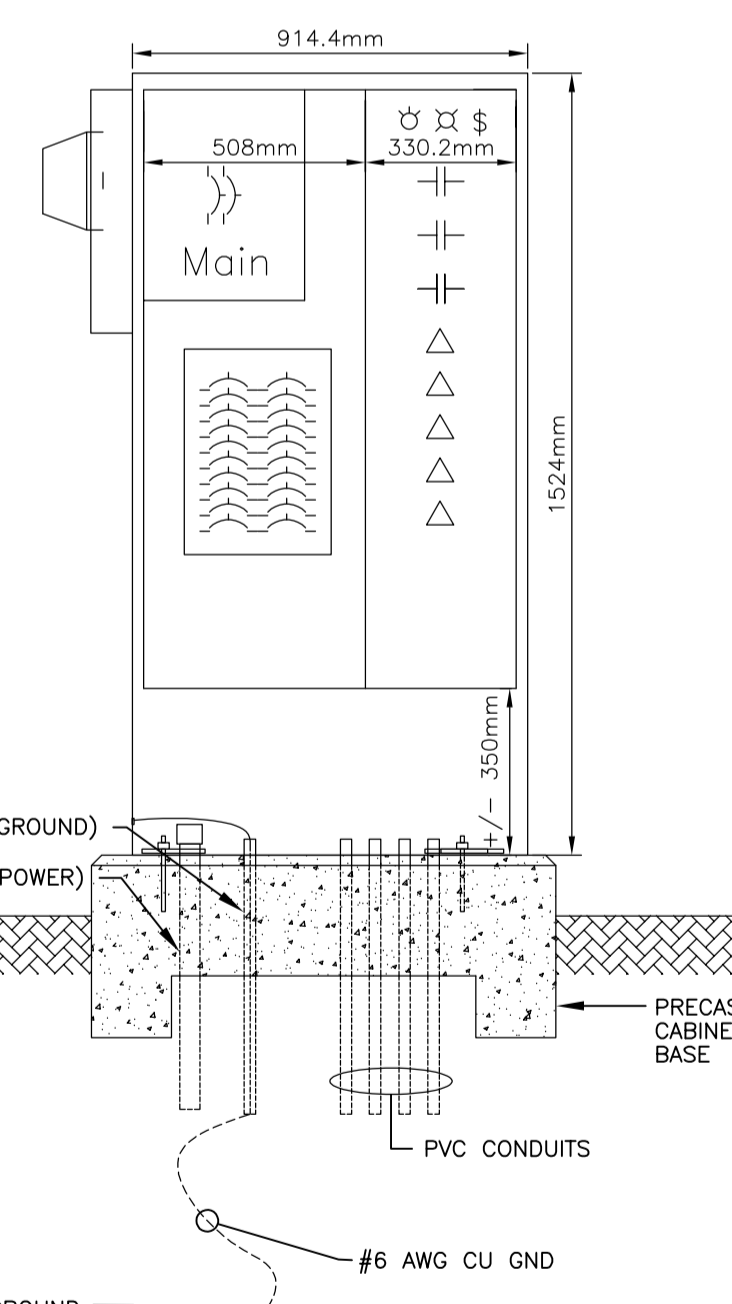
3 TRENCH DETAIL
EL1.01 SCALE N.T.S

CONTROL PANEL

- NEW CONTROL PANEL SHALL BE APPROVED BY BC HYDRO.
- NEW CONTROL PANEL SHALL BE 100A, 120/208V, 3-PHASE 4-WIRE, 18CCT. BRANCH CIRCUIT BREAKERS AS SHOWN.
- THE PANEL SHALL HAVE A MARINE GRADE ALUMINUM CONSTRUCTION, EEMAC 3R RATING, WITH A GREY TEXTURED POWDER FINISH.
- THE PANEL SHALL HAVE A 100A MAIN BREAKER, COLD SEQUENCE METERING, AND A UTILITY METER SOCKET.
- THE PANEL SHALL HAVE A DUAL LOCK, PROVIDING INDEPENDENT ACCESS TO BC HYDRO.
- THE PANEL SHALL HAVE ONE (1) 100A, 8-POLES LIGHTING CONTACTOR, WITH PHOTOCELL AND A HAND-OFF-AUTO SWITCH.
- THE PANEL SHALL HAVE A CONVENIENCE GFCI PLUG, CONVENIENCE LIGHT AND SWITCH.
- THE PANEL SHALL BE MOUNTED ON A PRECAST BASE, ARMTEC #4-0045 OR APPROVED ALTERNATE.
- SERVICE CONDUCTORS SHALL BE STRANDED COPPER, RW90 XLPE.
- SERVICE ENTRANCE RATED MAIN BREAKER SECTION 22AIC AT 250V C/W SEALABLE & LOCKABLE COVER.
- 7 JAW, 100A METER SOCKET (COLD METERED)
- PEC, TIME CLOCK, LIGHT SWITCH, RECEPTACLE, & HEATER.
- UTILITY/CUSTOMER DUAL PADLOCK KIT - "D-UCL"
- FULLY CSA CERTIFIED, ASSEMBLED, PREWIRED, & TESTED.

GROUNDING

- THE CONTRACTOR SHALL PERFORM GROUND RESISTANCE TESTS AND GROUND CONTINUITY TESTS USING METHOD APPROPRIATE TO SITE CONDITIONS BEFORE ENERGIZATION.
- TEST INSULATION RESISTANCE ("MEGGER") OF FEEDER AND BRANCH CIRCUITS WITH A 500V INSTRUMENT FOR VOLTAGES LOWER THAN 350V AND A 1000V INSTRUMENT FOR VOLTAGES RANGING BETWEEN 350V AND 600V. CIRCUITS WITH A RESISTANCE LESS THAN 4MΩ (MEGAOHMS), FOR CIRCUITS UP TO 100m IN LENGTH, WILL BE CONSIDERED A FAILURE AND SHALL REQUIRE THE CONTRACTOR REPLACE THE WIRING.



* MUST CONFORM TO BC HYDRO AND BC ELECTRIC REQUIREMENTS.
* C/W HEATER/THERMOSTAT PACKAGE

2 CONTROL PANEL
EL1.01 SCALE N.T.S

urbansystems.ca

Professional Seals

MP&P
MASKELL PLENZIK & PARTNERS ENGINEERING
Suite 206, 619-70th Avenue S.E. Phone: (403) 599-2905
Calgary, Alberta Fax: (403) 599-2906
Canada, T2H 2S5 Website: www.mppeng.ca

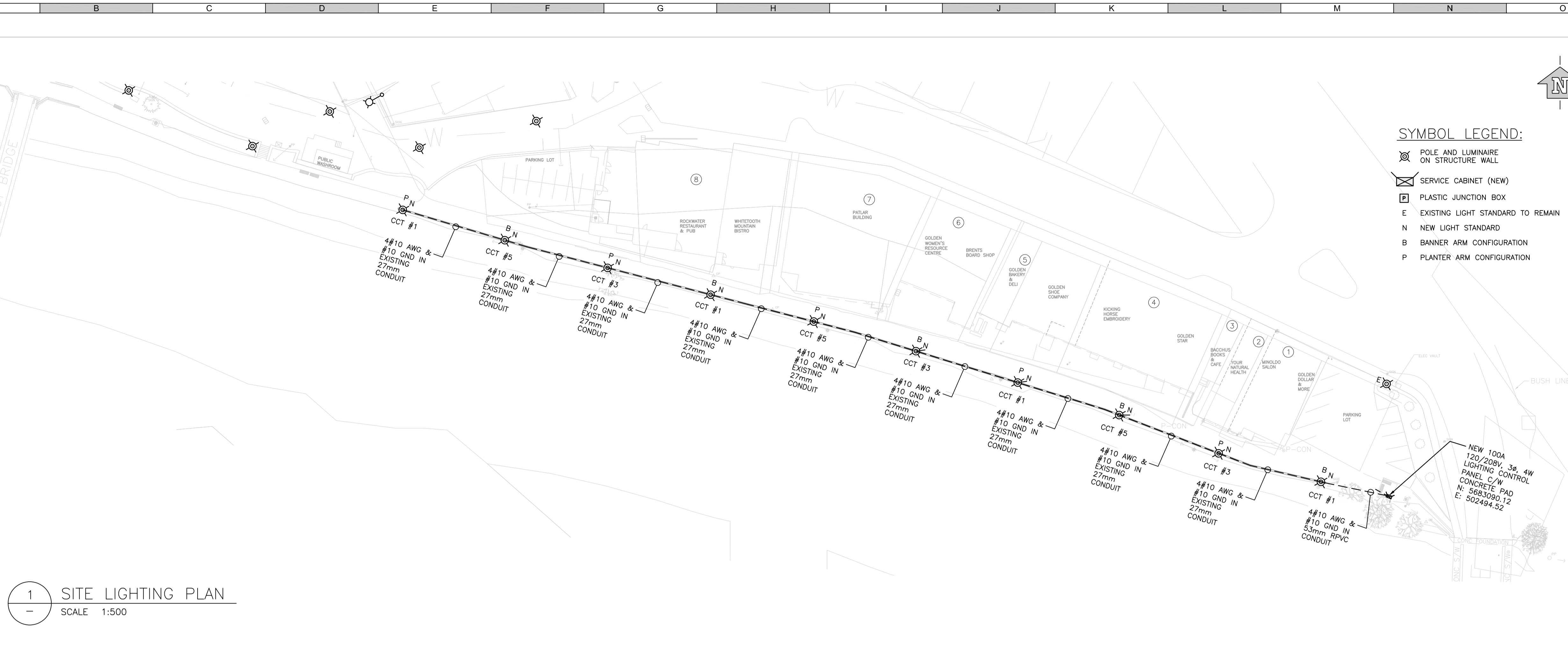
#	Date	Issue / Revision	App
1	2022-01-19	ISSUED FOR RECORD	HL
-	-	-	-
-	-	-	-
-	-	-	-
-	-	-	-
-	-	-	-
-	-	-	-
-	-	-	-

URBAN systems
Scale: -5m 0 5m 10m 15m
Quality Control by: HL
Designed by: HL
Drawn by: JK

TOWN OF GOLDEN BRIDGE TO BRIDGE DIKE UPGRADES
SITE LIGHTING PLAN

Sheet Number: 1 of 3
Project Number: 180407.00
Drawing Number: EL1.01
Revision: 1

RECORD DRAWING:
THE INFORMATION CONTAINED IN THIS DRAWING IS DERIVED FROM "AS-BUILT" DRAWINGS RECEIVED FROM THE GENERAL CONTRACTOR. THE CONSULTANT HAS NOT VERIFIED THIS INFORMATION ON SITE.



1 SITE LIGHTING PLAN
SCALE 1:500

SYMBOL LEGEND:

- ⊗ POLE AND LUMINAIRE ON STRUCTURE WALL
- ⊠ SERVICE CABINET (NEW)
- PLASTIC JUNCTION BOX
- E EXISTING LIGHT STANDARD TO REMAIN
- N NEW LIGHT STANDARD
- B BANNER ARM CONFIGURATION
- P PLANTER ARM CONFIGURATION

ATTENTION
This drawing is prepared for the sole use of
No representations of any kind are made by Urban Systems Ltd. or its employees to any party with whom Urban Systems Ltd. does not have a contract.

WARNING
Utilities or structures shown on this drawing were compiled from information supplied by various parties and may not be complete or accurate. Expose and conclusively confirm the location in the field all underground utilities and structures indicated on this drawing, all underground utilities in the area of the proposed work and any utilities or structures reasonably apparent from an inspection of the proposed work. Urban Systems Ltd. assumes no responsibility for loss or damage caused by third party negligence or failure to comply with the above.

SURVEY INFORMATION
Prepared by:
Coordinate System:
Completion Date:

-

-

-

urbansystems.ca

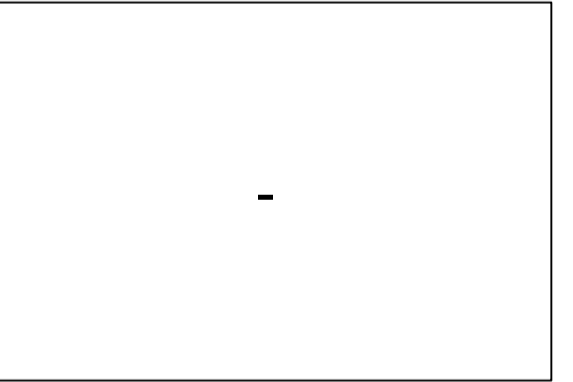
Professional Seals

MP&P

MASKELL PLENZIK & PARTNERS ENGINEERING

Suite 206, 619-70th Avenue S.E. Phone: +1403-599-2905
Calgary, Alberta Fax: +1403-599-2906
Canada, T2H 2G5 Website: www.mppeng.ca

#	Date	Issue / Revision	App
1	2022-01-19	ISSUED FOR RECORD	HL
-	-	-	-
-	-	-	-
-	-	-	-
-	-	-	-
-	-	-	-
-	-	-	-



URBAN
systems

Scale: -5m 0 5m 10m 15m

Quality Control by HL
Designed by HL
Drawn by JK

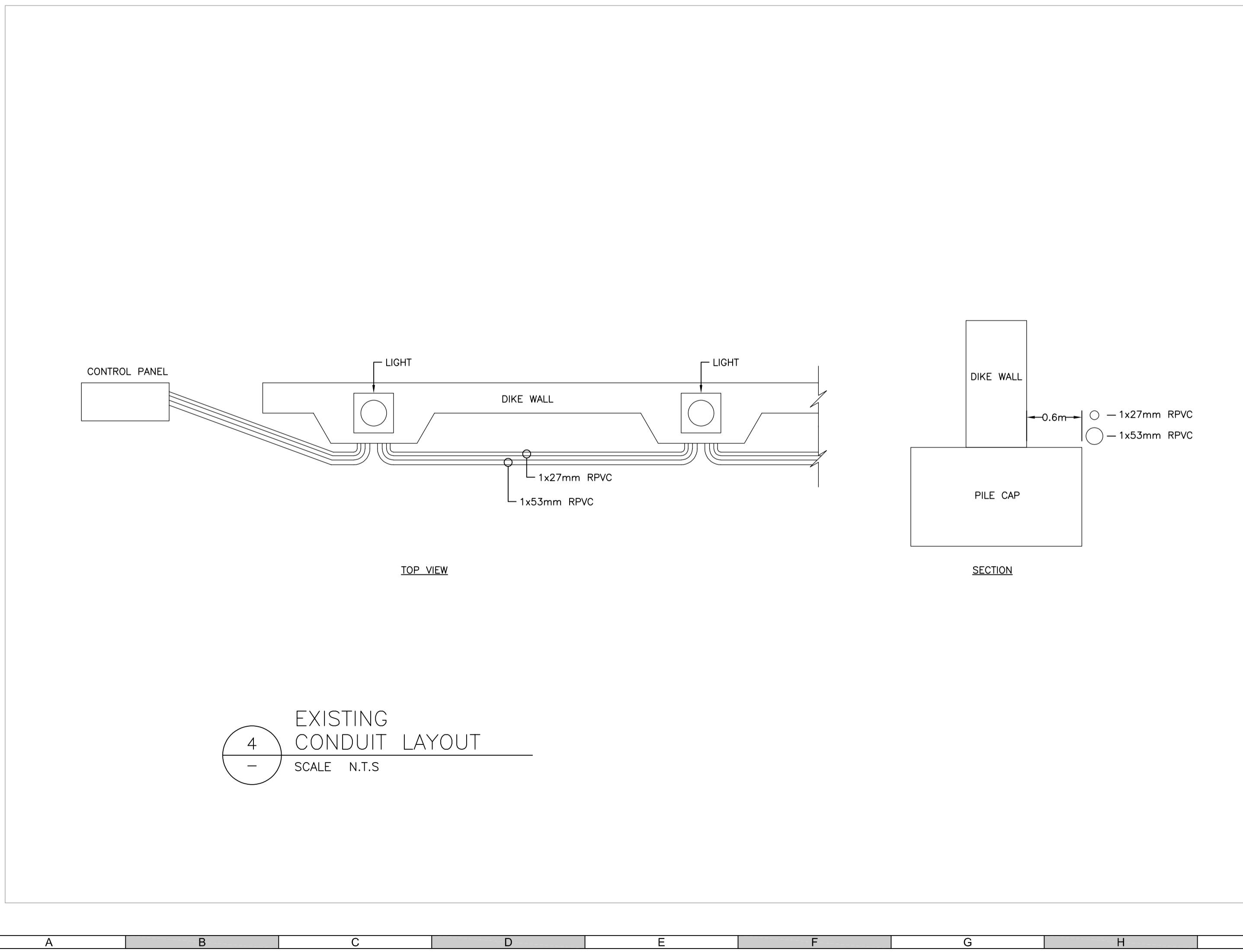
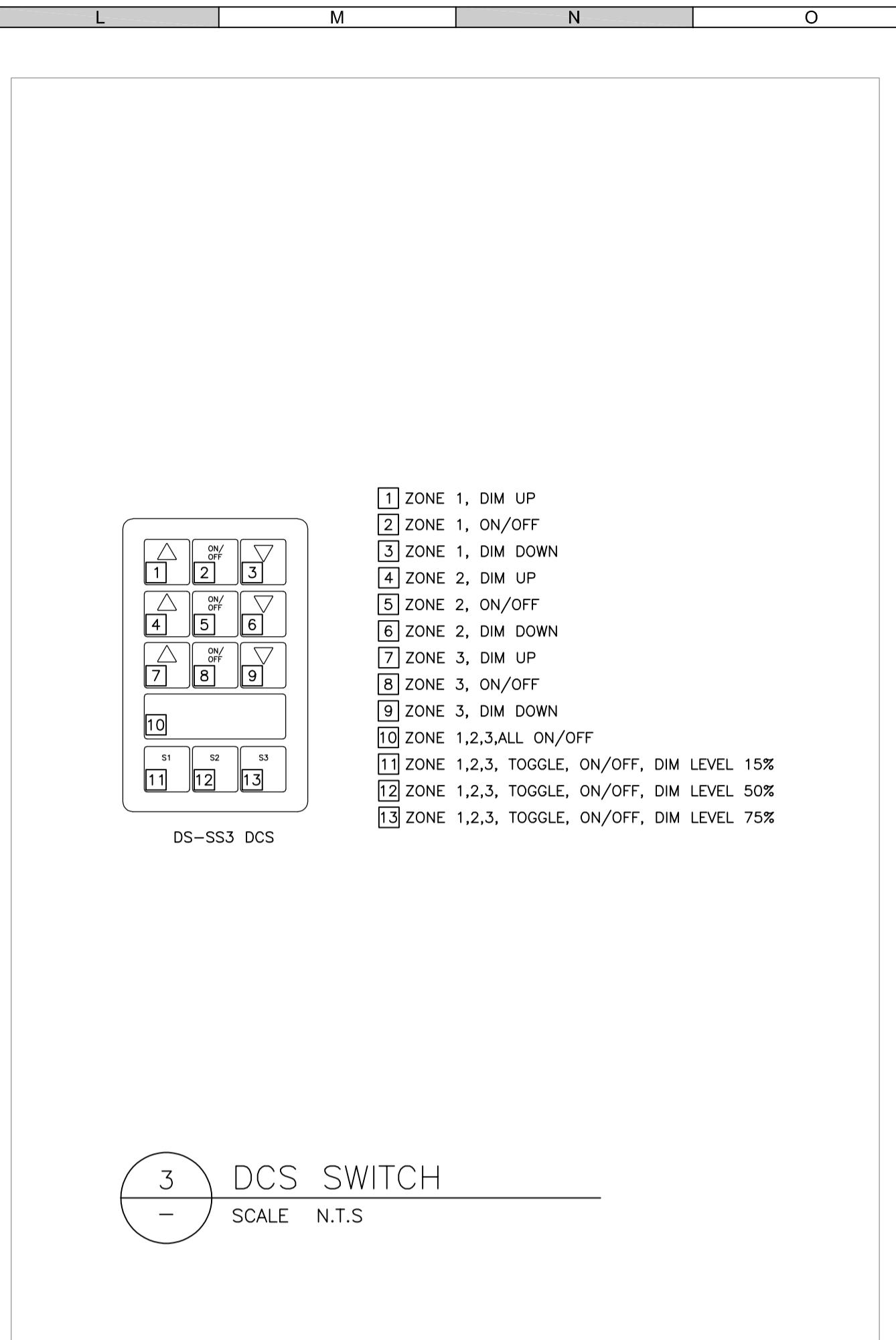
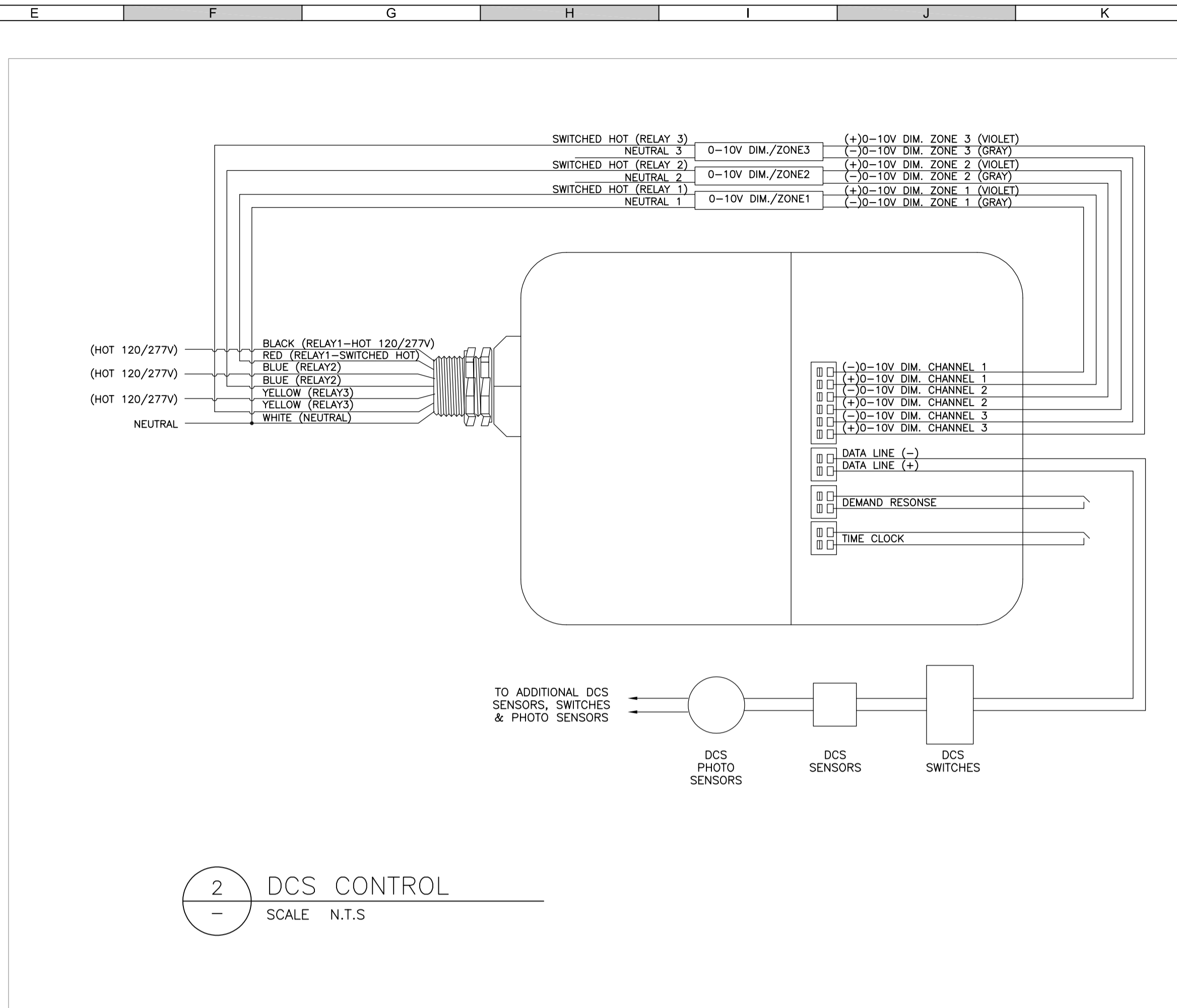
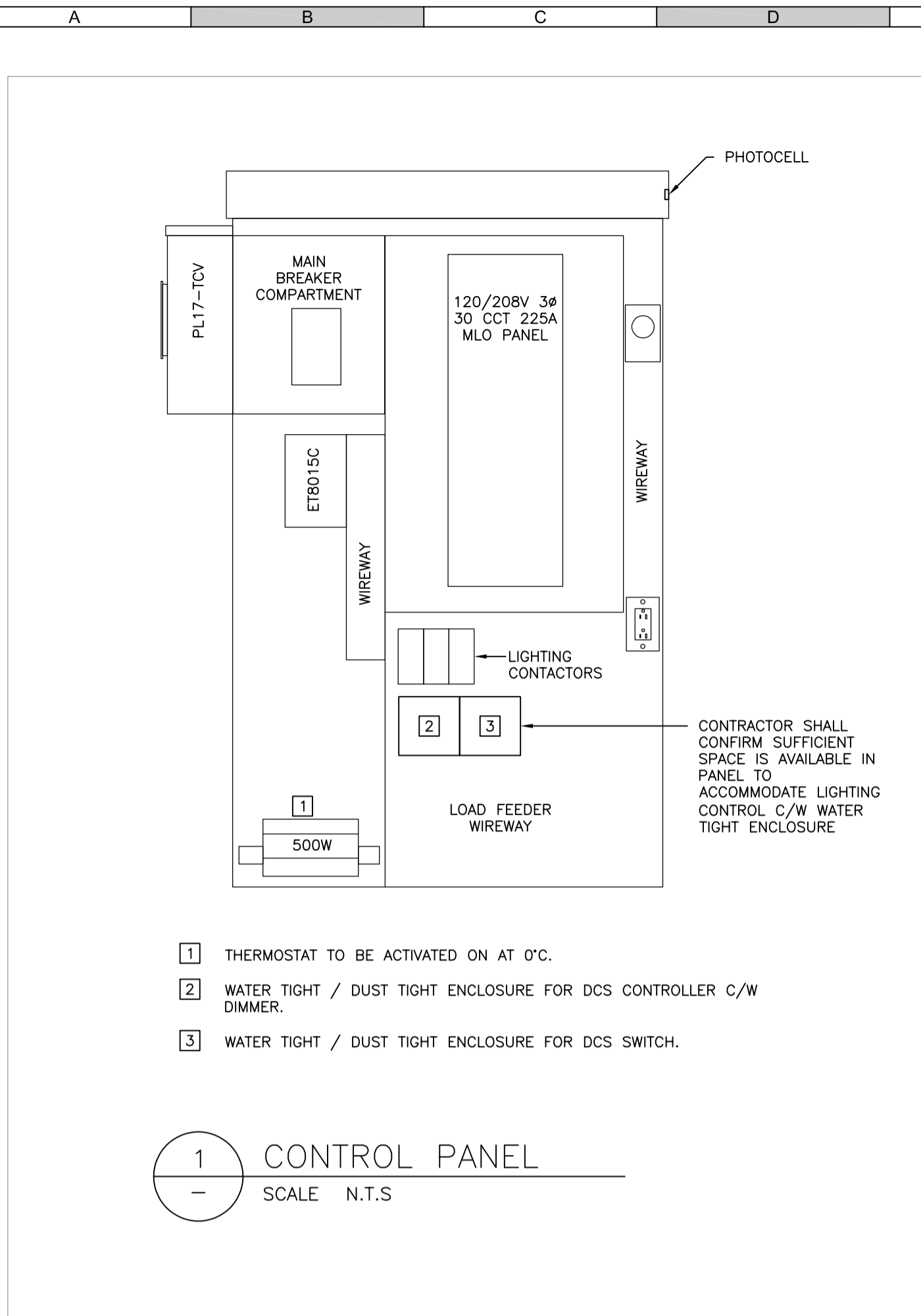
TOWN OF GOLDEN BRIDGE TO BRIDGE DIKE UPGRADES
LIGHTING CONTROL PLAN

Sheet Number 2 of 3
Project Number 180407.00 Drawing Number SKETCH 1 Revision 1



2 CONTROL WIRE LAYOUT IN ONE EXISTING 53mm CONDUIT
SCALE 1:500

RECORD DRAWING:
THE INFORMATION CONTAINED IN THIS DRAWING IS DERIVED FROM "AS-BUILT" DRAWINGS RECEIVED FROM THE GENERAL CONTRACTOR. THE CONSULTANT HAS NOT VERIFIED THIS INFORMATION ON SITE.



ATTENTION
This drawing is prepared for the sole use of
No representations of any kind are made by Urban Systems Ltd. or its employees to any party with whom Urban Systems Ltd. does not have a contract.

WARNING
Utilities or structures shown on this drawing were compiled from information supplied by various parties and may not be complete or accurate. Expose and conclusively confirm the location in the field all underground utilities and structures indicated on this drawing, all underground utilities in the area of the proposed work and any utilities or structures reasonably apparent from an inspection of the proposed work. Urban Systems Ltd. assumes no responsibility for loss or damage caused by third party negligence or failure to comply with the above.

SURVEY INFORMATION
Prepared by:
Coordinate System:
Compilation Date:

urbansystems.ca

Professional Seals

MP&P
MASKELL PLENZIK & PARTNERS ENGINEERING
Suite 206, 610-70th Avenue S.E. Phone: +1403 509-2905
Calgary, Alberta Fax: +1403 509-2906
Canada, T2H 2L6 Website: www.mppeng.ca

#	Date	Issue / Revision	App
1	2022-01-19	ISSUED FOR RECORD	HL
-	-	-	-
-	-	-	-
-	-	-	-
-	-	-	-
-	-	-	-
-	-	-	-
-	-	-	-
-	-	-	-

-

URBAN
systems

Scale: -5m 0 5m 10m 15m

Quality Control by HL
Designed by HL
Drawn by JK

TOWN OF GOLDEN BRIDGE TO BRIDGE DIKE UPGRADES
LIGHTING CONTROL PLAN

Sheet Number 3 of 3
Project Number 180407.00 Drawing Number SKETCH 2 Revision 1

RECORD DRAWING:
THE INFORMATION CONTAINED IN THIS DRAWING IS DERIVED FROM "AS-BUILT" DRAWINGS RECEIVED FROM THE GENERAL CONTRACTOR. THE CONSULTANT HAS NOT VERIFIED THIS INFORMATION ON SITE.