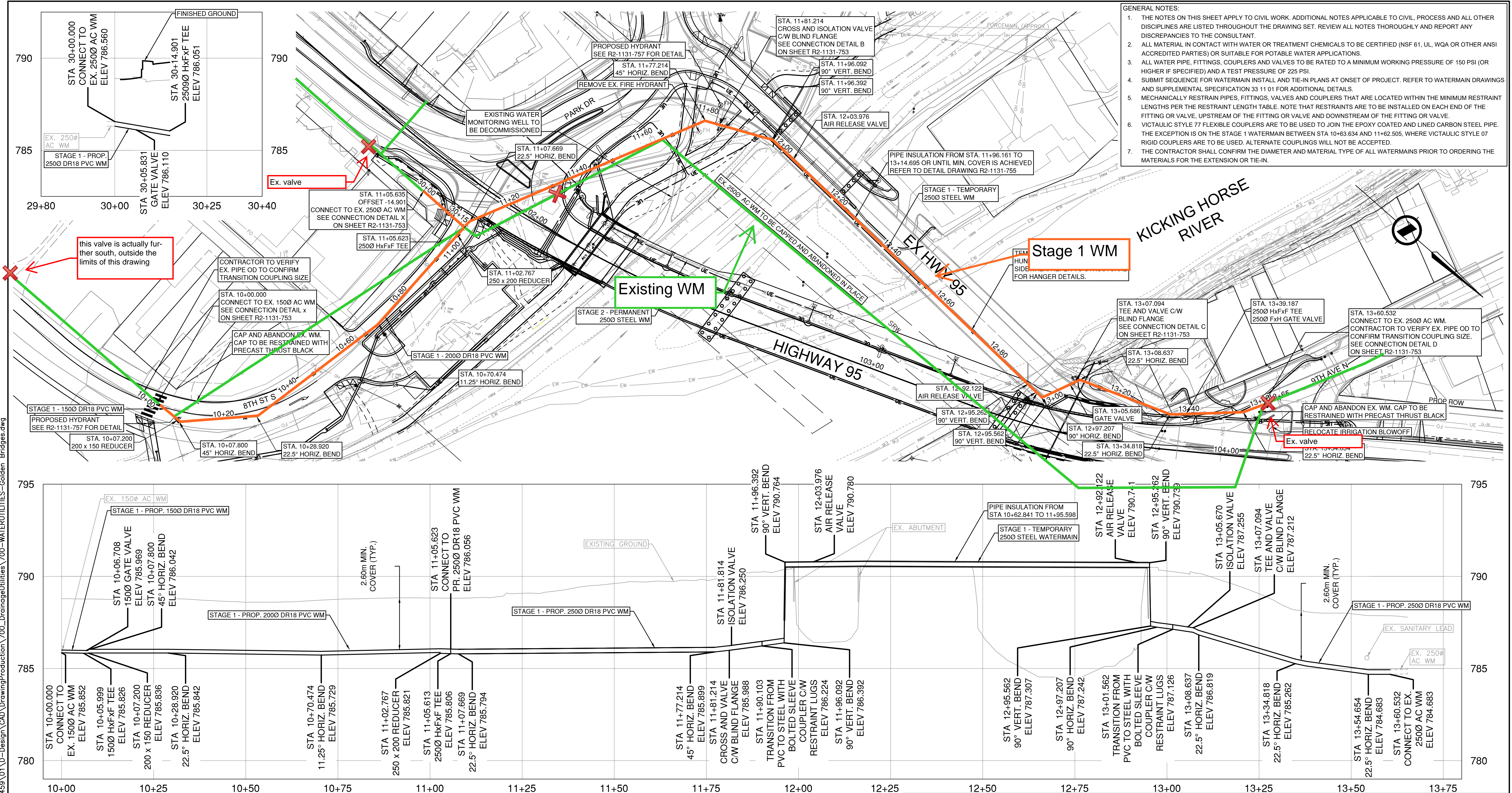


PLOT DATE: 2023/03/20 U:\Projects_KEL\1961\0459\01\Drawings\CAD\DrawingProduction\700-WaterUtilities-Golden Bridges.dwg



- GENERAL NOTES:
1. THE NOTES ON THIS SHEET APPLY TO CIVIL WORK. ADDITIONAL NOTES APPLICABLE TO CIVIL, PROCESS AND ALL OTHER DISCIPLINES ARE LISTED THROUGHOUT THE DRAWING SET. REVIEW ALL NOTES THOROUGHLY AND REPORT ANY DISCREPANCIES TO THE CONSULTANT.
 2. ALL MATERIAL IN CONTACT WITH WATER OR TREATMENT CHEMICALS TO BE CERTIFIED (NSF 61, UL, WQA OR OTHER ANSI ACCREDITED PARTIES) OR SUITABLE FOR POTABLE WATER APPLICATIONS.
 3. ALL WATER PIPE, FITTINGS, COUPLERS AND VALVES TO BE RATED TO A MINIMUM WORKING PRESSURE OF 150 PSI (OR HIGHER IF SPECIFIED) AND A TEST PRESSURE OF 225 PSI.
 4. SUBMIT SEQUENCE FOR WATERMAIN INSTALL AND TIE-IN PLANS AT ONSET OF PROJECT. REFER TO WATERMAIN DRAWINGS AND SUPPLEMENTAL SPECIFICATION 33 11 01 FOR ADDITIONAL DETAILS.
 5. MECHANICALLY RESTRAIN PIPES, FITTINGS, VALVES AND COUPLERS THAT ARE LOCATED WITHIN THE MINIMUM RESTRAINT LENGTHS PER THE RESTRAINT LENGTH TABLE. NOTE THAT RESTRAINTS ARE TO BE INSTALLED ON EACH END OF THE FITTING OR VALVE, UPSTREAM OF THE FITTING OR VALVE AND DOWNSTREAM OF THE FITTING OR VALVE.
 6. VICTAULIC STYLE 77 FLEXIBLE COUPLERS ARE TO BE USED TO JOIN THE EPOXY COATED AND LINED CARBON STEEL PIPE. THE EXCEPTION IS ON THE STAGE 1 WATERMAIN BETWEEN STA 10+63.634 AND 11+62.505, WHERE VICTAULIC STYLE 07 RIGID COUPLERS ARE TO BE USED. ALTERNATE COUPLINGS WILL NOT BE ACCEPTED.
 7. THE CONTRACTOR SHALL CONFIRM THE DIAMETER AND MATERIAL TYPE OF ALL WATERMAINS PRIOR TO ORDERING THE MATERIALS FOR THE EXTENSION OR TIE-IN.

- FOR PLANS SEE DWG. No. R2-1131-101 to R2-1131-103
- FOR PROFILES SEE DWG. No. R2-1131-201 to R2-1131-206
- FOR LANDSCAPING SEE DWG. No. R2-1131-1101 to R2-1131-1108
- FOR GEOMETRICS & LANING SEE DWG. No. R2-1131-401 to R2-1131-405
- FOR SPOT ELEVATIONS SEE DWG. No. R3-1131-501 to R2-1131-503
- FOR SIGNING & PAVEMENT MARKINGS SEE DWG. No. R2-1131-601 to R2-1131-603

- FOR DRAINAGE & UTILITIES SEE DWG. No. R2-1131-701 to R2-1131-703
- FOR UTILITY REMOVALS SEE DWG. No. R2-1131-701 to R2-1131-703
- FOR TYPICAL SECTIONS SEE DWG. No. R2-1131-301 to R2-1131-304
- FOR ENVIRONMENTAL IMPACT PLAN SEE DWG. No. R2-1131-1121 to R2-1131-1122
- FOR RIP RAP DRAWINGS SEE DWG. No. R2-1131-1151 to R2-1131-1158
- FOR KHRB 1 STRUCTURAL SEE DWG. No. 0318-001 to 0318-025

- FOR KHRB 2 STRUCTURAL SEE DWG. No. 6294-12 to 6294-20
 - FOR ELECTRICAL SEE DWG. No. TE-22028-1 to TE-22028-10
 - REFER TO ELECTRICAL DRAWING FOR HEAT TRACE REQUIREMENTS
 - REFER TO STRUCTURAL DWG FOR PIPE SUPPORT REQUIREMENTS
- THE LOCATION OF EXISTING UNDERGROUND UTILITIES SHOWN HEREON IS APPROXIMATE ONLY AND PREDOMINANTLY BASED ON AS-BUILT INFORMATION. THE CONTRACTOR WILL CONFIRM THE FIELD LOCATIONS OF THESE UTILITIES WITH THE UTILITY STAKEHOLDERS.

ISSUED FOR
100% DETAIL DESIGN
2023-04-06
urbansystems.ca

URBAN SYSTEMS

SCALE: 0 5 1:500 20m
0 2.5 1:250 10m

CAD FILENAME: 700-WATERUTILITIES-GOLDEN BRIDGES
PLOT DATE: 2023-03-20

REV	DATE	REVISIONS	NAME

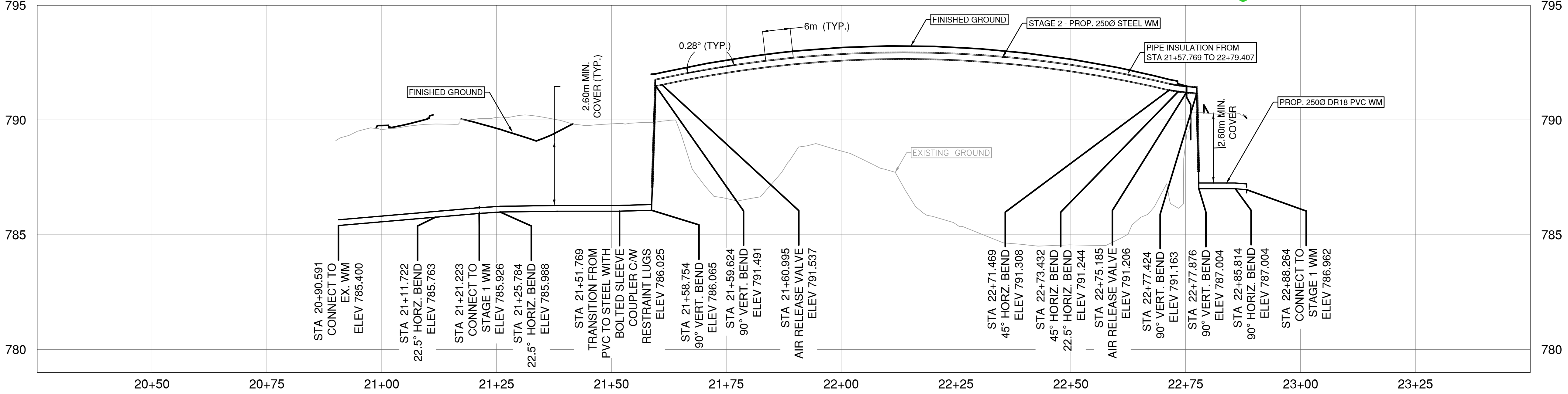
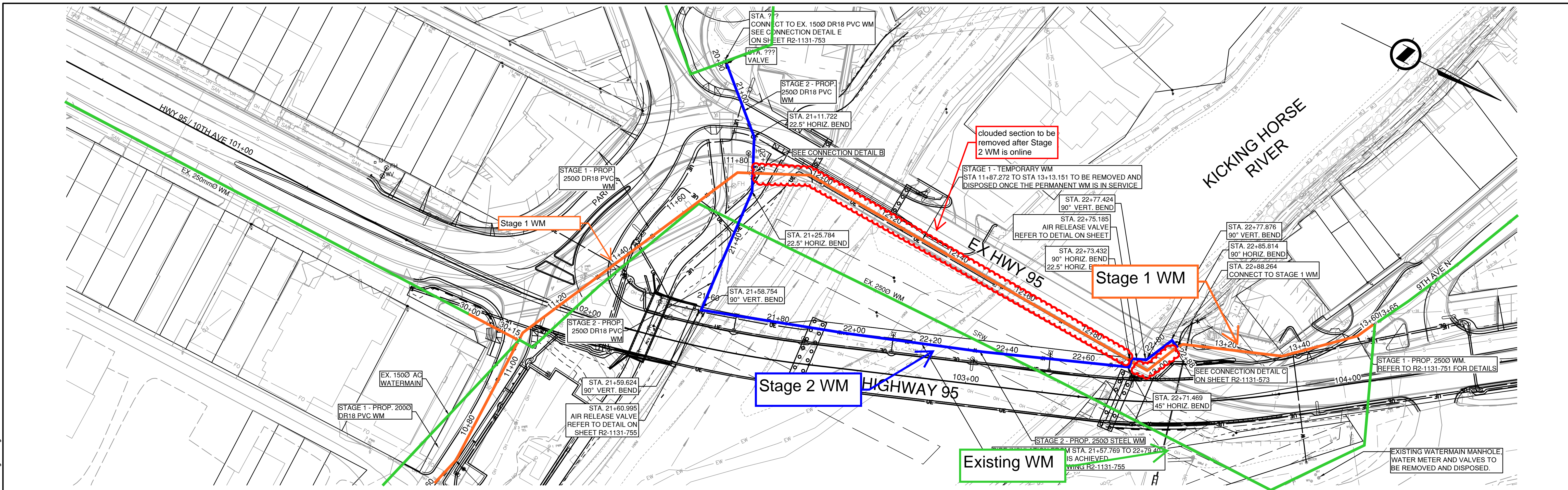
BRITISH COLUMBIA MINISTRY OF TRANSPORTATION AND INFRASTRUCTURE
SOUTHERN INTERIOR REGION
HIGHWAY ENGINEERING AND GEOMATICS

STAGE 1 - TEMPORARY WATERMAIN
HIGHWAY No. 95
KICKING HORSE RIVER BRIDGE 1 & 2
REPLACEMENT AND APPROACHES

DESIGNED: M. GABELHEI DATE: 2023-03-20
QUALITY CONTROL: J. WILKISON DATE: 2023-03-20
SENIOR DESIGNER: T. BLACKBURN DATE: 2023-03-20
DRAWN: J. BRUINEMAN DATE: 2023-03-20

FILE NUMBER: 1961.0459.01	PROJECT NUMBER: 23325-0000	REG: 2	DRAWING NUMBER: R2-1131-751	REV: -
---------------------------	----------------------------	--------	-----------------------------	--------

PLOT DATE: 2023/03/20 U:\Projects_KEL\1961\0459\01\Design\CAD\DrawingProduction\700-WaterUtilities-Golden Bridges.dwg



- FOR PLANS SEE DWG. No. R2-1131-101 to R2-1131-103
- FOR PROFILES SEE DWG. No. R2-1131-201 to R2-1131-206
- FOR LANDSCAPING SEE DWG. No. R2-1131-1101 to R2-1131-1108
- FOR GEOMETRICS & LANING SEE DWG. No. R2-1131-401 to R2-1131-405
- FOR SPOT ELEVATIONS SEE DWG. No. R3-1131-501 to R2-1131-503
- FOR SIGNING & PAVEMENT MARKINGS SEE DWG. No. R2-1131-601 to R2-1131-603
- FOR DRAINAGE & UTILITIES SEE DWG. No. R2-1131-701 to R2-1131-703
- FOR UTILITY REMOVALS SEE DWG. No. R2-1131-701 to R2-1131-703
- FOR TYPICAL SECTIONS SEE DWG. No. R2-1131-301 to R2-1131-304
- FOR ENVIRONMENTAL IMPACT PLAN SEE DWG. No. R2-1131-1121 to R2-1131-1122
- FOR RIP RAP DRAWINGS SEE DWG. No. R2-1131-1151 to R2-1131-1158
- FOR KHRB 1 STRUCTURAL SEE DWG. No. 0318-001 to 0318-025
- FOR KHRB 2 STRUCTURAL SEE DWG. No. 6294-12 to 6294-20
- FOR ELECTRICAL SEE DWG. No. TE-22028-1 to TE-22028-10
- REFER TO ELECTRICAL DWG FOR HEAT TRACE REQUIREMENTS
- REFER TO STRUCTURAL DWG FOR PIPE SUPPORT REQUIREMENTS

- GENERAL NOTES:**
1. THE NOTES ON THIS SHEET APPLY TO CIVIL WORK. ADDITIONAL NOTES APPLICABLE TO CIVIL, PROCESS AND ALL OTHER DISCIPLINES ARE LISTED THROUGHOUT THE DRAWING SET. REVIEW ALL NOTES THOROUGHLY AND REPORT ANY DISCREPANCIES TO THE CONSULTANT.
 2. ALL MATERIAL IN CONTACT WITH WATER OR TREATMENT CHEMICALS TO BE CERTIFIED (NSF 61, UL, WQA OR OTHER ANSI ACCREDITED PARTIES) OR SUITABLE FOR POTABLE WATER APPLICATIONS.
 3. ALL WATER PIPE, FITTINGS, COUPLERS AND VALVES TO BE RATED TO A MINIMUM WORKING PRESSURE OF 150 PSI (OR HIGHER IF SPECIFIED) AND A TEST PRESSURE OF 225 PSI.
 4. SUBMIT SEQUENCE FOR WATERMAIN INSTALL AND TIE-IN PLANS AT ONSET OF PROJECT. REFER TO WATERMAIN DRAWINGS AND SUPPLEMENTAL SPECIFICATION 33 11 01 FOR ADDITIONAL DETAILS.
 5. MECHANICALLY RESTRAIN PIPES, FITTINGS, VALVES AND COUPLERS THAT ARE LOCATED WITHIN THE MINIMUM RESTRAINT LENGTHS PER THE RESTRAINT LENGTH TABLE. NOTE THAT RESTRAINTS ARE TO BE INSTALLED ON EACH END OF THE FITTING OR VALVE, UPSTREAM OF THE FITTING OR VALVE AND DOWNSTREAM OF THE FITTING OR VALVE.
 6. VICTAULIC STYLE 77 FLEXIBLE COUPLERS ARE TO BE USED TO JOIN THE EPOXY COATED AND LINED CARBON STEEL PIPE. THE EXCEPTION IS ON THE STAGE 1 WATERMAIN BETWEEN STA 10+63.634 AND 11+62.505, WHERE VICTAULIC STYLE 07 RIGID COUPLERS ARE TO BE USED. ALTERNATE COUPLINGS WILL NOT BE ACCEPTED.
 7. THE CONTRACTOR SHALL CONFIRM THE DIAMETER AND MATERIAL TYPE OF ALL WATERMANS PRIOR TO ORDERING THE MATERIALS FOR THE EXTENSION OR TIE-IN.

ISSUED FOR
100% DETAIL DESIGN
2023-04-06
urbansystems.ca

URBAN SYSTEMS

SCALE: 0 5 10 20m H: 1:500 V: 1:250 10m

CAD FILENAME: 700-WATERUTILITIES-GOLDEN BRIDGES
PLOT DATE: 2023-03-20

REV	DATE	REVISIONS	NAME

BRITISH COLUMBIA MINISTRY OF TRANSPORTATION AND INFRASTRUCTURE
SOUTHERN INTERIOR REGION
HIGHWAY ENGINEERING AND GEOMATICS

STAGE 2 - PERMANENT WATERMAIN
HIGHWAY No. 95
KICKING HORSE RIVER BRIDGE 1 & 2
REPLACEMENT AND APPROACHES

DESIGNED: M. GABELHEI DATE: 2023-03-20
QUALITY CONTROL: J. WILKISON DATE: 2023-03-20
QUALITY ASSURANCE: T. BLACKBURN DATE: 2023-03-20
DRAWN: J. BRUINEMAN DATE: 2023-03-20

SENIOR DESIGNER: _____
DATE: 2022-09-22

FILE NUMBER: 1961.0459.01	PROJECT NUMBER: 23325-0000	REG: 2	DRAWING NUMBER: R2-1131-752	REV: -
---------------------------	----------------------------	--------	-----------------------------	--------