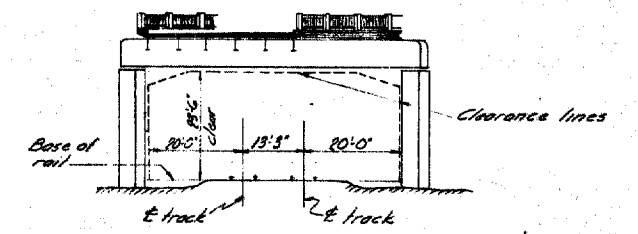
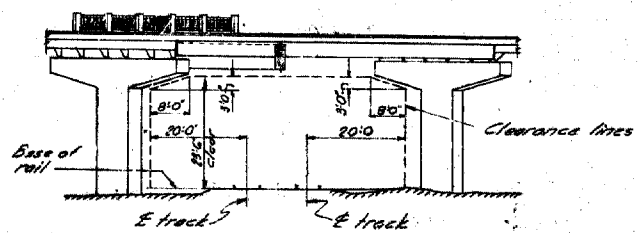


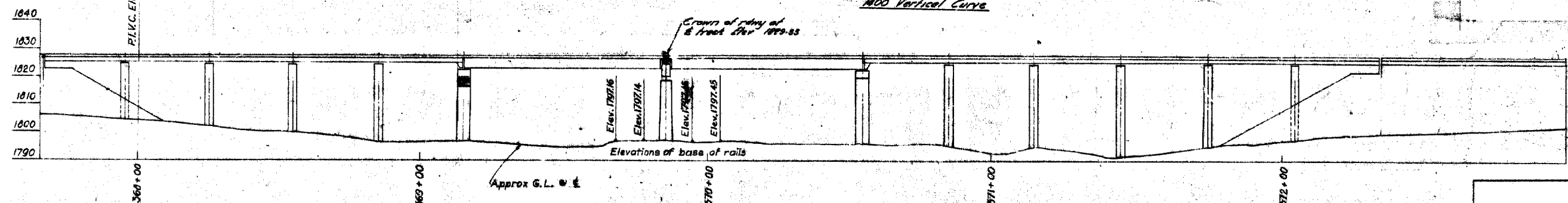
PLAN



SECTION B-B



SECTION A-A

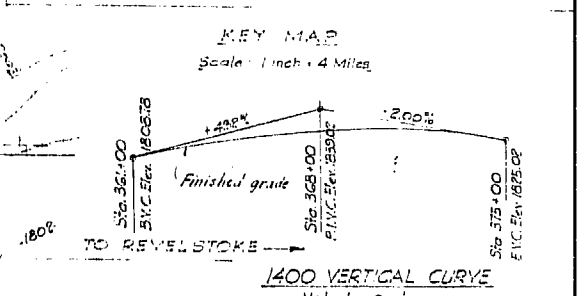
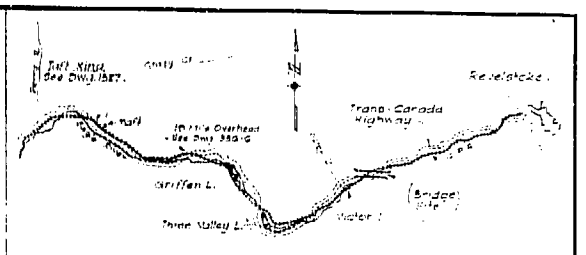
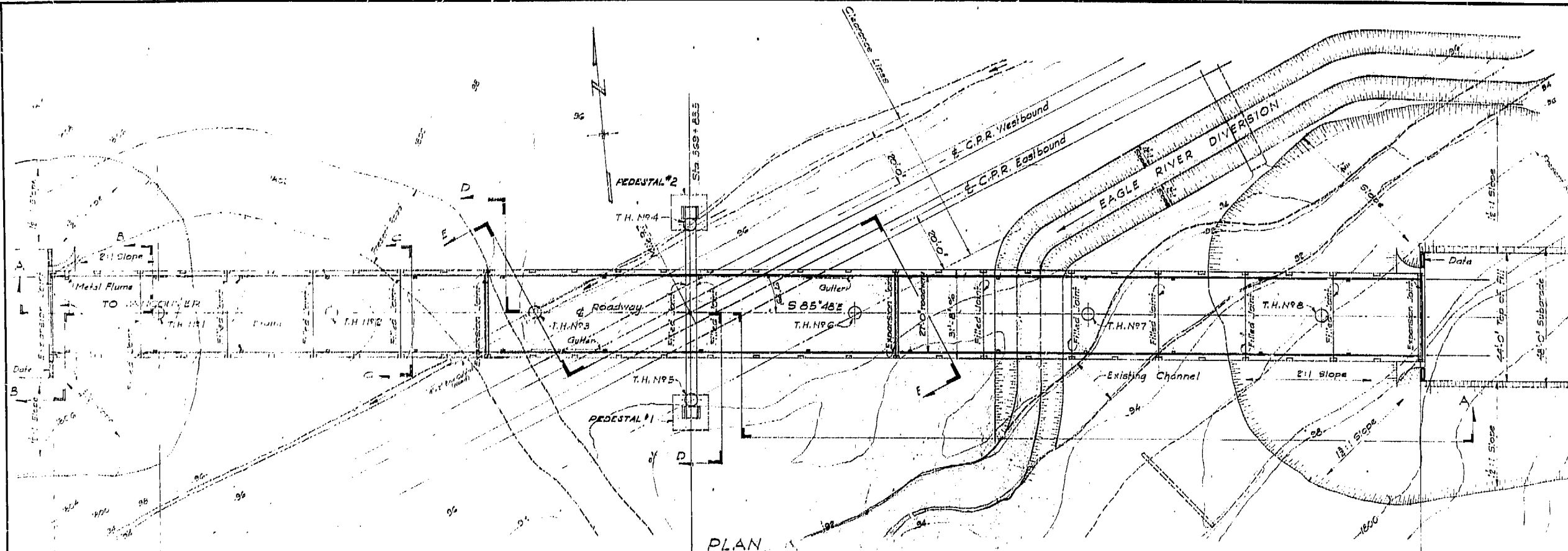


PROFILE

REVELSTOKE DISTRICT  
 TRANS-CANADA HIGHWAY - MILE - 467.36  
**SUMMIT LAKE OVERHEAD  
 PROPOSED LAYOUT**  
 SCALE: 1 in = 20 ft.

REVISIONS			
Rev.	Particulars	Init.	Date

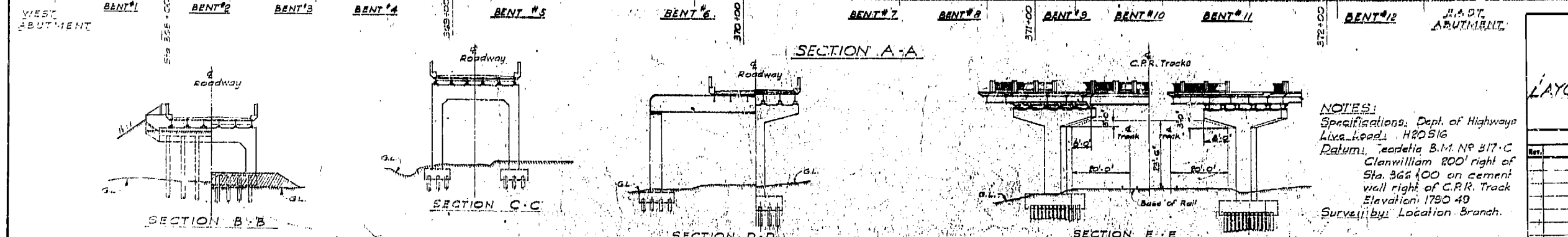
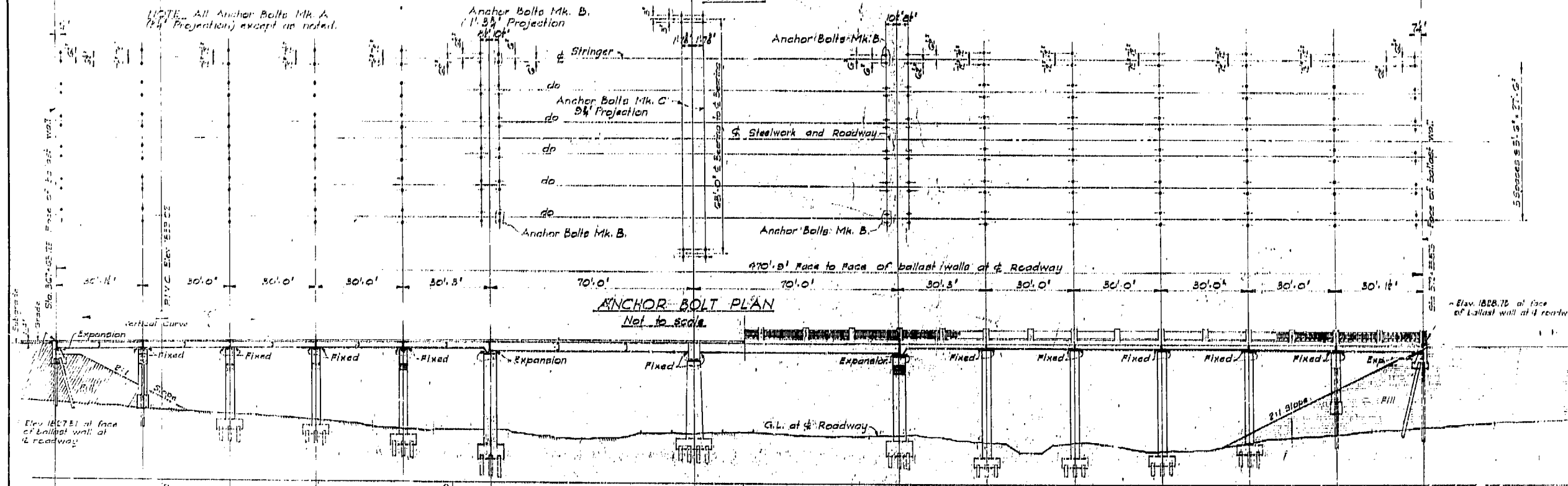
GOVT. OF BRITISH COLUMBIA DEPT. OF HIGHWAYS BRIDGE ENGINEER'S OFFICE	
Made by <u>K.D.</u> 8Feb.57 Checked by <u>W.S.</u> Feb 1961 Approved: _____	DRAWING NO. <b>BRIDGES</b> 1522-3



Elev.	TEST HOLES
10	2 3 4 5 6
1800	
80	
70	
60	
50	
40	
30	
20	
10	
1750	

LEGEND	
[Symbol]	CLAY
[Symbol]	SILT
[Symbol]	SAND
[Symbol]	GRAVEL
[Symbol]	BOULDERS
[Symbol]	CRUSHED MATERIAL

LIST OF DRAWINGS	
DWG. NO.	TITLE
1522-4	Layout, Anchor Bolt Plan & Key Map
1522-5	Abutments
1522-6	Bents N°1 to 4 & 8 to 12
1522-7	Bents N°5, 6 & 7
1522-8	Steelwork Details - Sheet 1
1522-9	Steelwork Details - Sheet 2
1522-10	Deck Details
1522-11	Standard Roadway Fence



NOTES:  
 Specifications: Dept. of Highways  
 Lixa Road - H20516  
 Datum: Geodetic B.M. N° 317-C  
 Glenwilliam 200' right of  
 Sta. 366+00 on cement  
 wall right of C.P.R. Track  
 Elevation: 1790.49  
 Survey by: Location Branch.

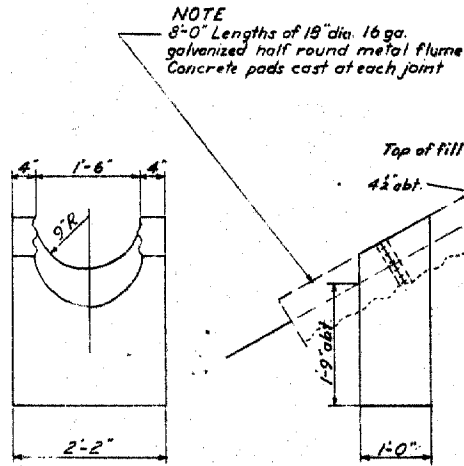
REVELSTOKE DISTRICT  
 TRANS-CANADA HIGHWAY - MILE 467.95  
**SUMMIT LAKE OVERHEAD**  
 LAYOUT, ANCHOR BOLT PLAN & KEY MAP  
 SCALE: 1" = 20'-0" & AS NOTED

REVISIONS		
No.	Particulars	Date

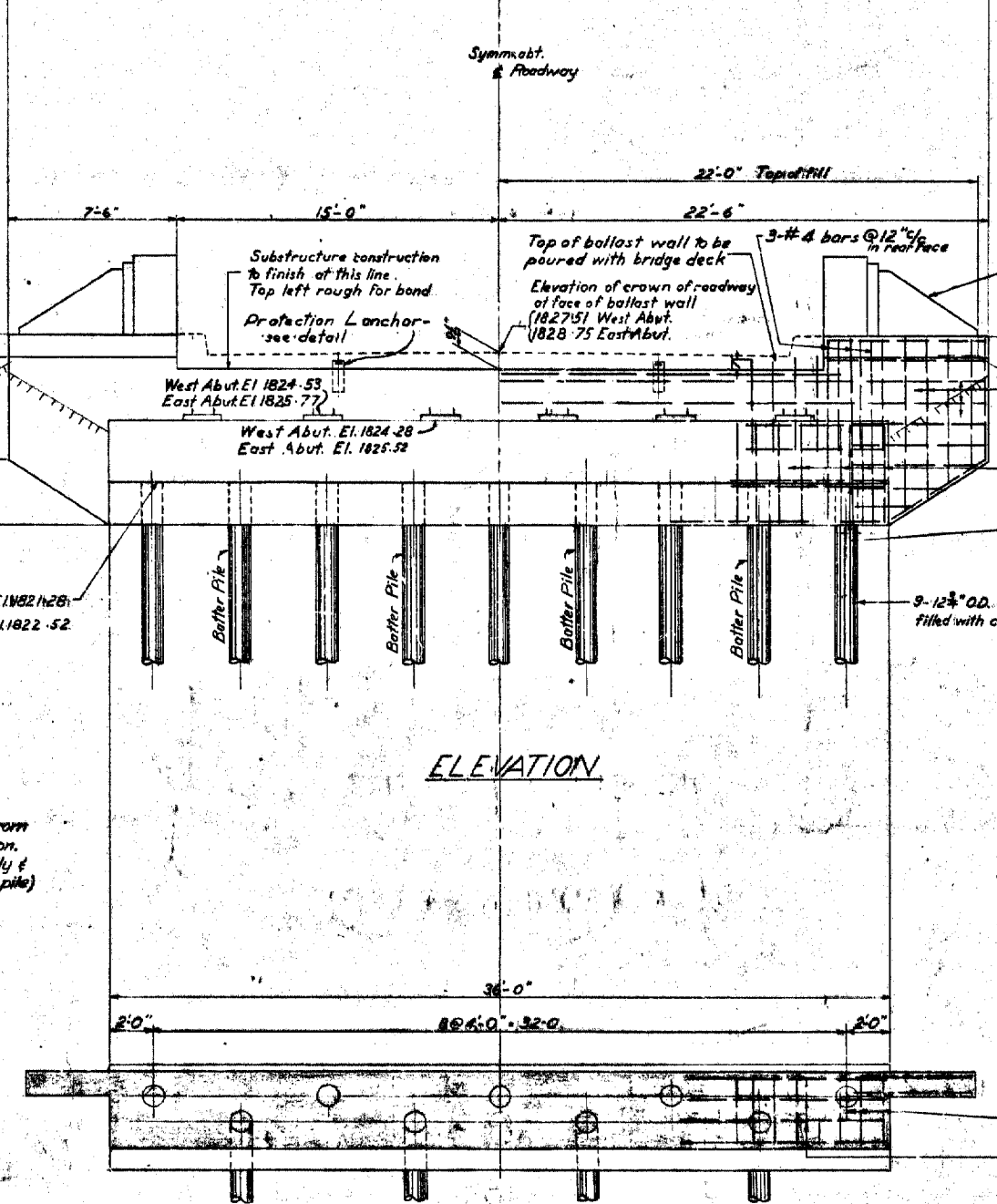
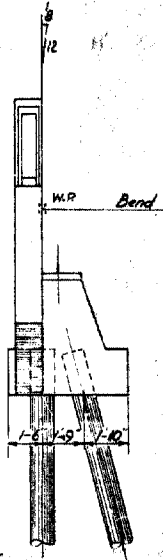
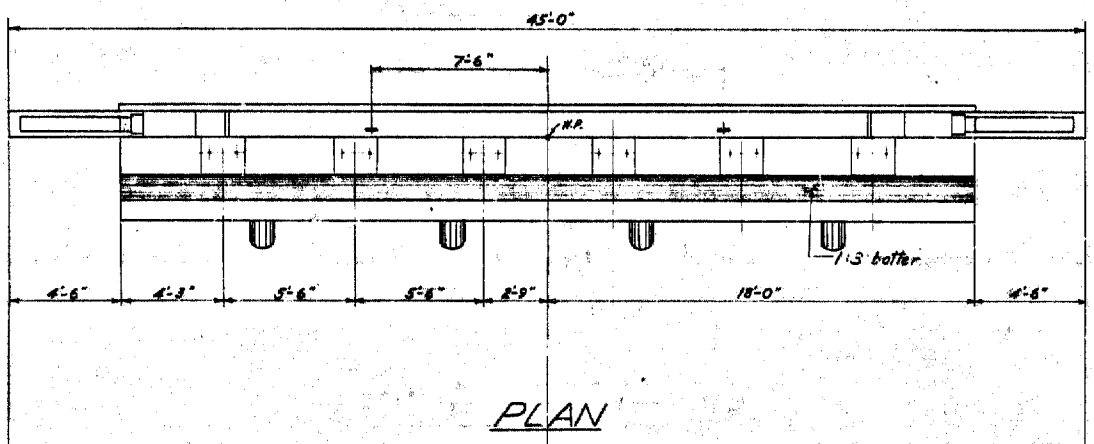
GOVT. OF BRITISH COLUMBIA  
 DEPT. OF HIGHWAYS  
 BRIDGE ENGINEER'S OFFICE

Intl.	Date	DRAWING NO.
M.C.M.	1957	1522-4

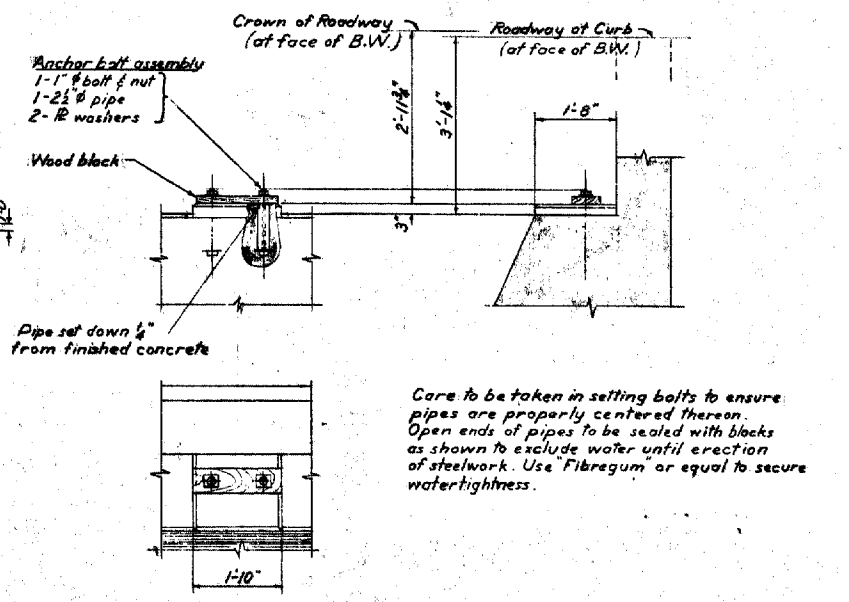
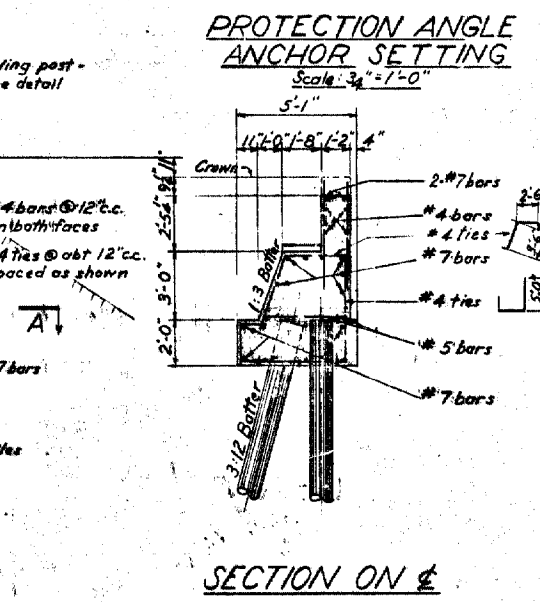
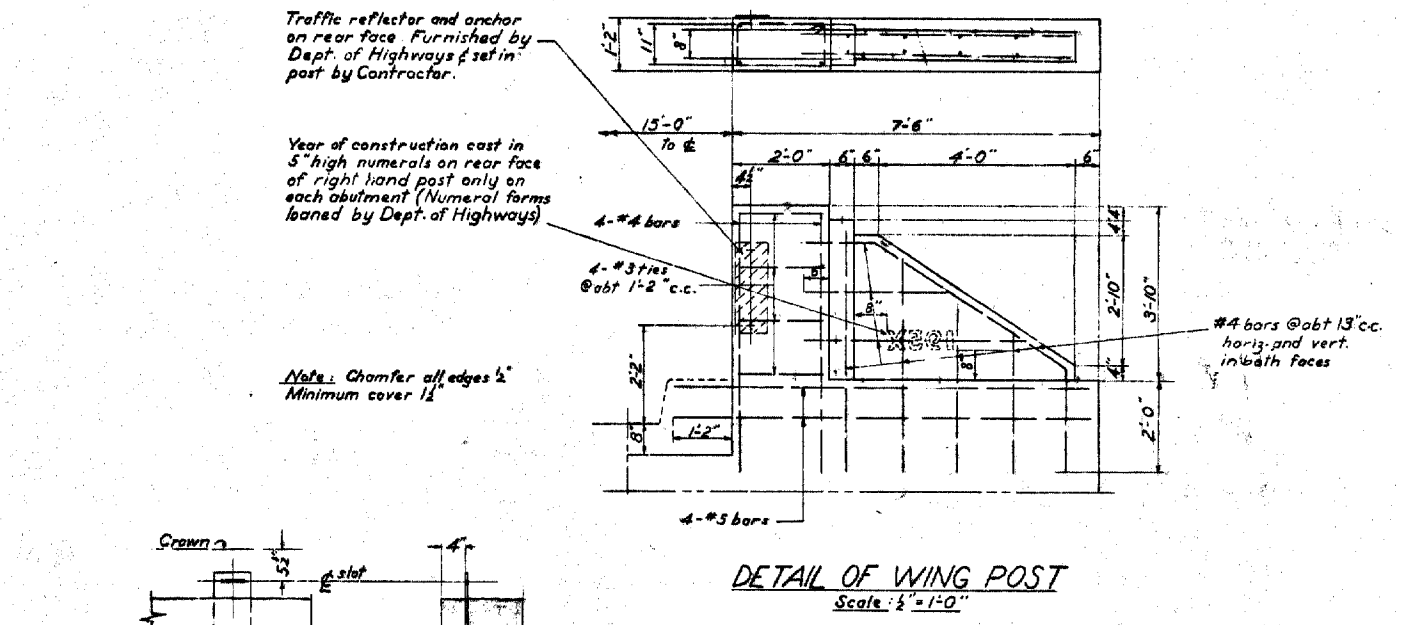
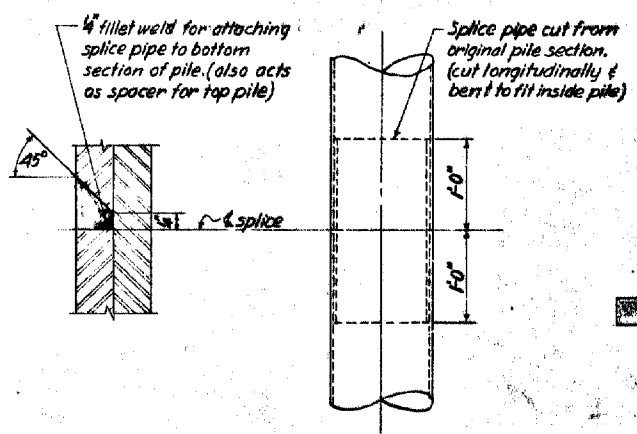
Made by: M.C.M. 1957  
 Checked by: J.P. 1957  
 Approved: [Signature] 1957



**PADS FOR FLUMES**  
Scale: 3/4" = 1'-0"



SECTION A-A



- NOTES**
1. Piles to be driven through fill and to a min. penetration of 20 feet into original ground
  2. Concrete to be class 'A' throughout
  3. Exposed edges to be chamfered 1" except where noted otherwise
  4. A drainage course 1'-0" thick of coarse gravel to be placed at back of abutts
  5. Anchor bolt pipes are to be filled with sand-cement grout by the steelwork erector immediately before placing stringers in final position
  6. Reinforcing steel cover 2" except where noted
  7. Reinforcing steel to be structural grade
  8. Reinforcing Min. diam. of pins to be used for bending bars including hooks, to be 2x for stirrups and ties, 6x for #8 bars and under. Extension of free ends on hooks to be 4x for Lap bars for splices 40 x d

ESTIMATED QUANTITIES			
	Concrete Class 'A'	Reinforcing 12 # O.D. Steel/piles	
East Abutment	36 cu. yds. 13 cu. yds. in piles	2400 lbs	9 - 50' 0" / 4
West Abutment	36 cu. yds. 10 cu. yds. in piles	2000 lbs	9 - 48' 0" / 4
Total	72 cu. yds. 23 cu. yds.	4400 lbs	

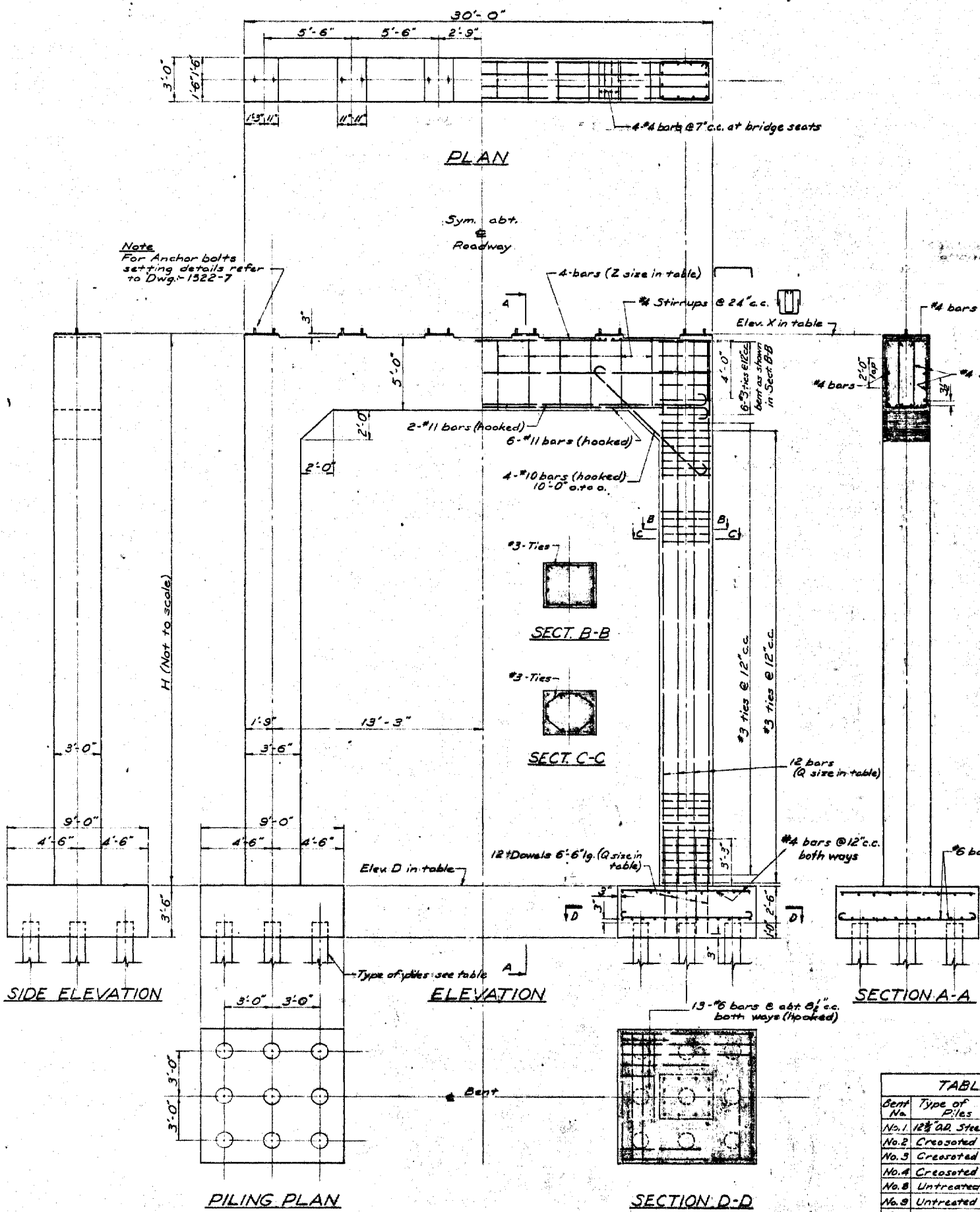
REVELSTOKE DISTRICT  
TRANS-CANADA HIGHWAY MILE 467.35  
**SUMMIT LAKE OVERHEAD**  
ABUTMENTS  
Scale: 1/4" = 1'-0" and as noted

REVISIONS		
Rev.	Particulars	Date

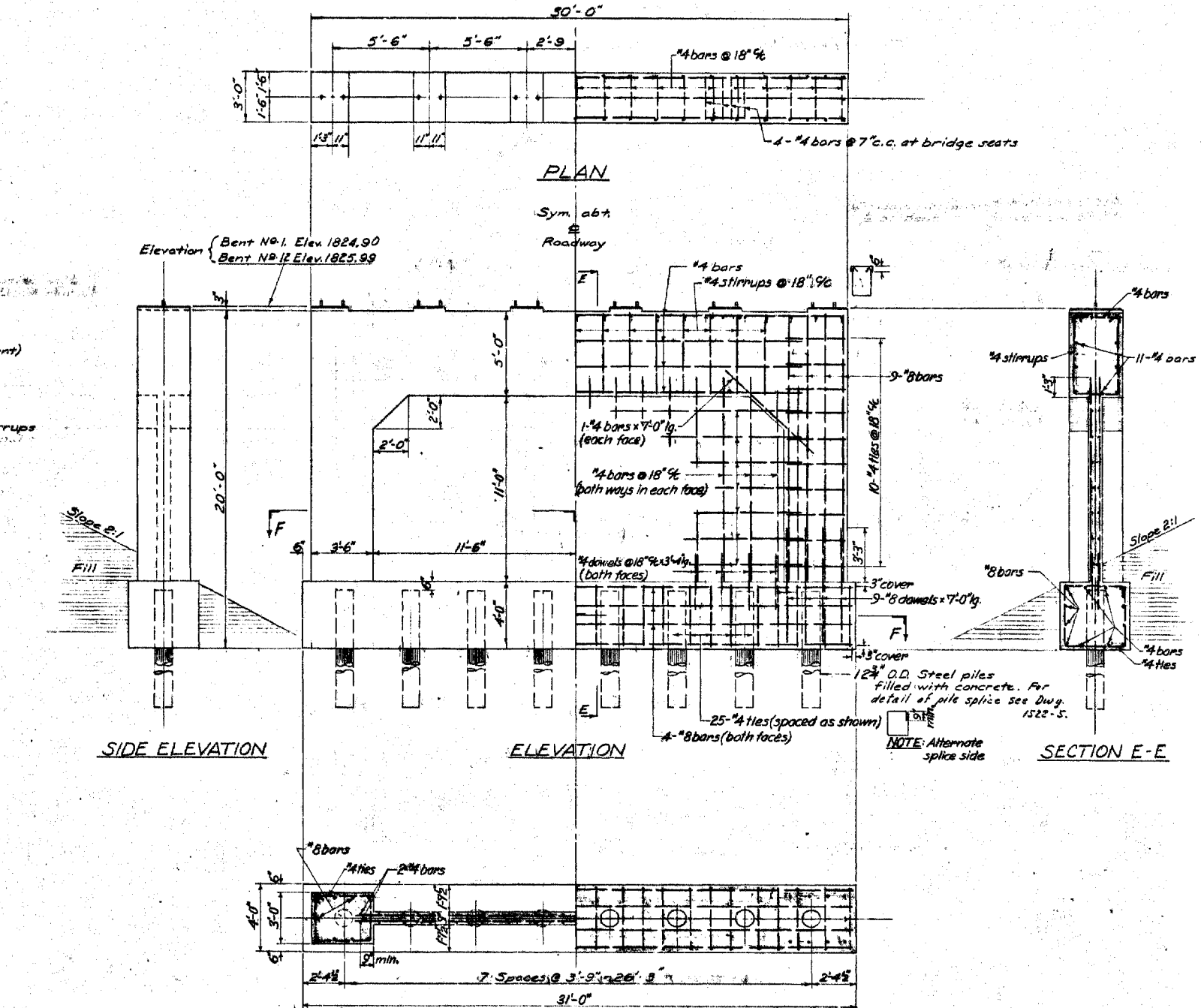
GOVT. OF BRITISH COLUMBIA  
DEPT. OF HIGHWAYS  
BRIDGE ENGINEER'S OFFICE

Init.	Date	DRAWING NO.

Made by D.D. 5-4-57  
Checked by [Signature] Apr 17/57  
Approved by [Signature]  
1522-5



Note  
For Anchor bolts  
setting details refer  
to Dwg. 1522-7



**TABLE OF DIMENSIONS**

BENT No.	H	Elev. X	Elev. D	Size of bars Z	Size of bars Q
No. 2	24'-0"	1825.24	1801.24	4-#10	12-#10
No. 3	26'-0"	1825.54	1798.54	4-#10	12-#10
No. 4	29'-0"	1825.79	1796.79	4-#9	12-#9
No. 8	37'-0"	1826.46	1789.46	4-#9	12-#9
No. 9	37'-0"	1826.40	1789.40	4-#9	12-#9
No. 10	36'-0"	1826.31	1790.31	4-#9	12-#9
No. 11	32'-0"	1826.17	1794.17	4-#9	12-#9

**TABLE OF ESTIMATED QUANTITIES**

Bent No.	Type of Piles	No. of Piles & Length	Concrete in Piles	Concrete	Reinforcing steel
No. 1	12" O.D. Steel	8 - 30'-0" lg.	7 cu. yds.	51 cu. yds.	3,300 lbs.
No. 2	Crescoted	18 - 30'-0" lg.	-	53 cu. yds.	7,500 lbs.
No. 3	Crescoted	18 - 30'-0" lg.	-	53 cu. yds.	7,500 lbs.
No. 4	Crescoted	18 - 36'-0" lg.	-	57 cu. yds.	6,900 lbs.
No. 8	Untreated	18 - 30'-0" lg.	-	63 cu. yds.	7,700 lbs.
No. 9	Untreated	18 - 36'-0" lg.	-	63 cu. yds.	7,700 lbs.
No. 10	Crescoted	18 - 36'-0" lg.	-	62 cu. yds.	7,600 lbs.
No. 11	Crescoted	18 - 30'-0" lg.	-	59 cu. yds.	7,200 lbs.
No. 12	12" O.D. Steel	8 - 30'-0" lg.	11 cu. yds.	51 cu. yds.	3,300 lbs.
TOTAL			18 cu. yds.	546 cu. yds.	65,500 lbs.

- NOTES**
- Steel pipe piles at Bents 1 & 12 to be driven through fill and to a minimum penetration of 20 ft. and 30 ft. respectively into original ground.
  - Concrete to be Class "A" throughout.
  - Exposed edges to be chamfered 1" except where noted otherwise.
  - Anchor bolt pipes to be filled with sand-cement grout by the steelwork erector immediately before placing stringers.
  - Reinforcing steel to be Structural grade.
  - Reinforcing steel cover 2" except where noted otherwise.
  - Reinforcing - min. dia. of pins to be used for bending bars including hooks, to be 2x for stirrups and ties, 6x for No. 8 bars and under, 8x for No. 9 bars and over. Extensions of free ends on hooks to be 4x for main reinforcing, 9x for ties, not to be spliced.
  - Other reinforcing, #8 bars & under, to be lapped 40d at splices.
  - Footings to be carried down to Elevations as shown, and such lower elevations as may be ordered by the Engineer.

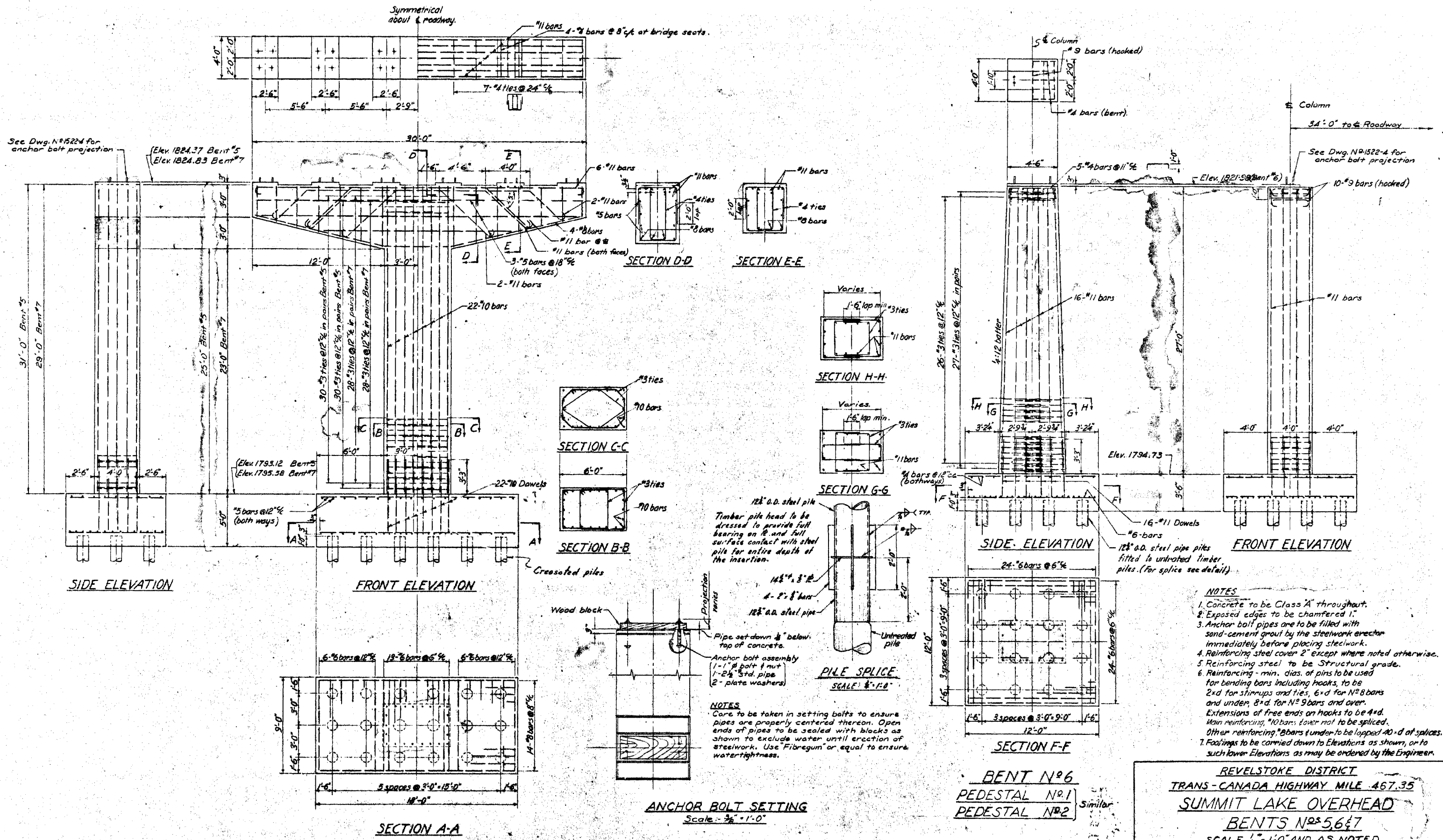
REVELSTOKE DISTRICT  
TRANS-CANADA HIGHWAY MILE 467.35  
SUMMIT LAKE OVERHEAD  
BENTS Nos 1 to 4 & 8 to 12  
SCALE 1/4" = 1'-0" & AS NOTED

REVISIONS		
No.	Particulars	Date

GOVT. OF BRITISH COLUMBIA  
DEPT. OF HIGHWAYS  
BRIDGE ENGINEER'S OFFICE

Made by: J.T.W.S. APR 50  
Checked by: J.M.A. APR 50  
Approved: [Signature] 1522-6

DRAWING NO. BRIDGES



- NOTES**
1. Concrete to be Class "A" throughout.
  2. Exposed edges to be chamfered 1".
  3. Anchor bolt pipes are to be filled with sand-cement grout by the steelwork erector immediately before placing steelwork.
  4. Reinforcing steel cover 2" except where noted otherwise.
  5. Reinforcing steel to be Structural grade.
  6. Reinforcing - min. diam. of pins to be used for bending bars including hooks, to be 2x d for stirrups and ties, 6x d for No. 8 bars and under, 8x d for No. 9 bars and over. Extensions of free ends on hooks to be 4x d. Main reinforcing, 10 bars, never not to be spliced. Other reinforcing, 8 bars & under to be lapped 40-d at splices.
  7. Footings to be carried down to Elevations as shown, or to such lower Elevations as may be ordered by the Engineer.

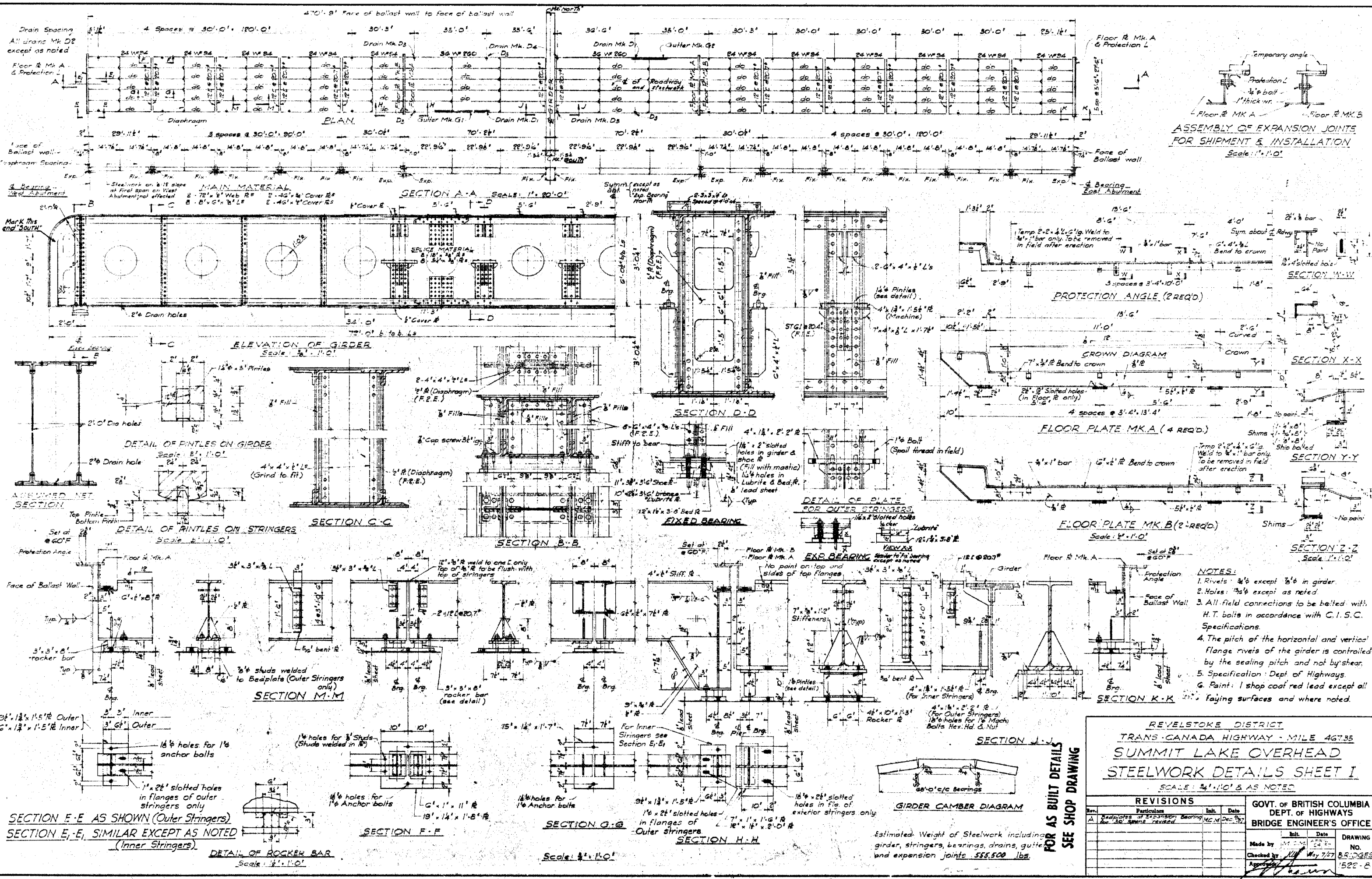
**REVELSTOKE DISTRICT**  
**TRANS-CANADA HIGHWAY MILE 467.35**  
**SUMMIT LAKE OVERHEAD**  
**BENTS Nos 5, 6 & 7**  
**SCALE 1/4" = 1'-0" AND AS NOTED**

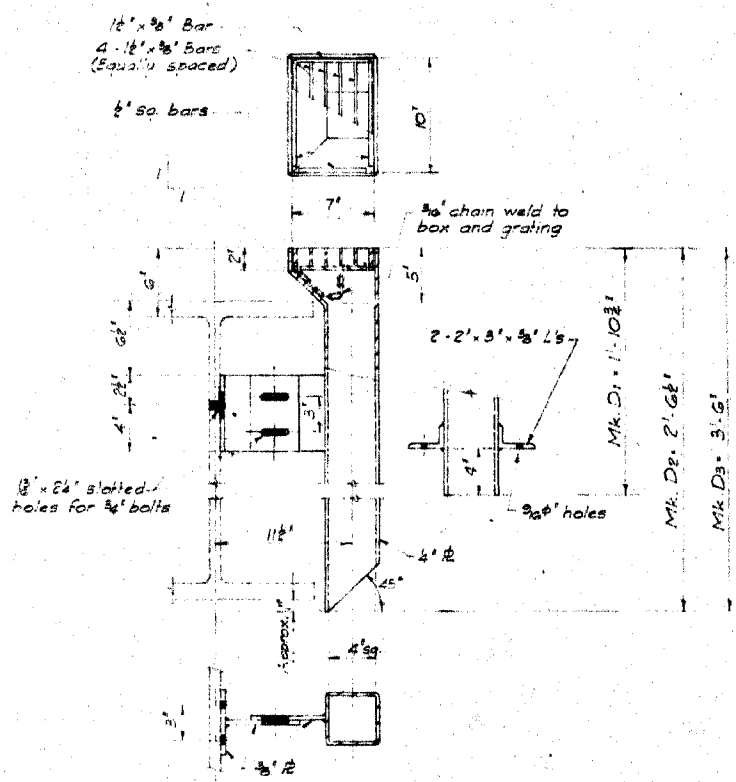
REVISIONS			GOVT. OF BRITISH COLUMBIA DEPT. OF HIGHWAYS BRIDGE ENGINEER'S OFFICE	
Rev.	Particulars	Init.	Date	

Made by: J.T.W.S. April 23-27  
Checked by: [Signature] Apr. 27/57  
Approved: [Signature] 1522-7

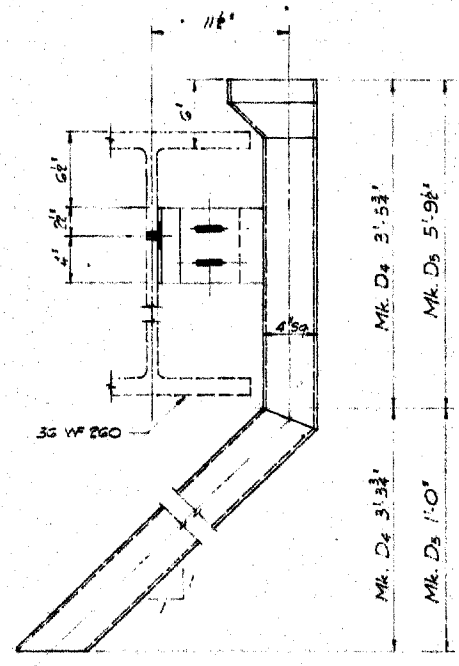
DRAWING NO. **BRIDGES**

ITEM	ESTIMATED QUANTITIES				TOTAL
	BENT #5	PEDESTAL #1	PEDESTAL #2	BENT #7	
12" O.D. Stl. pipe	-	16 - 25'-0" lg.	16 - 25'-0" lg.	18 - 58'-0" lg.	-
Crescated piles	12 - 48'-0" lg.	-	-	-	-
Untreated piles	-	16 - 50'-0" lg.	16 - 50'-0" lg.	-	-
Concrete	74 cu.yds.	39 cu.yds.	39 cu.yds.	72 cu.yds.	224 cu.yds.
Conc. in Stl. pipes	-	13 cu.yds.	13 cu.yds.	-	26 cu.yds.
Reinforcing	8,000 lbs.	4,750 lbs.	4,750 lbs.	7,750 lbs.	25,250 lbs.

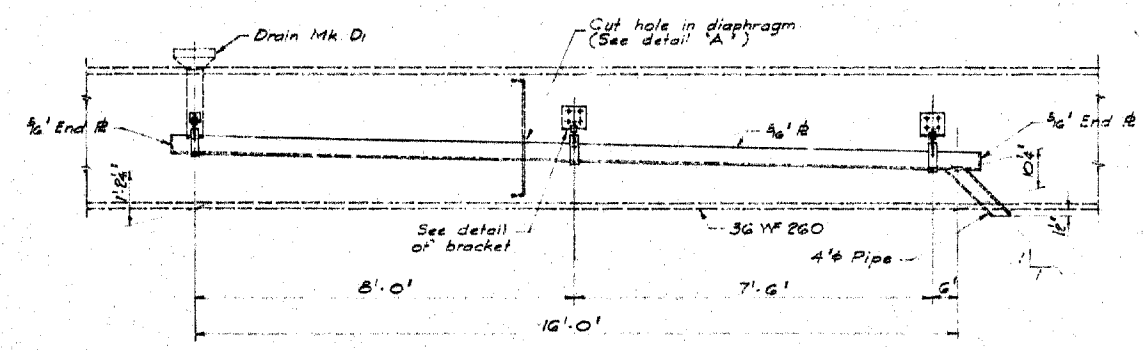




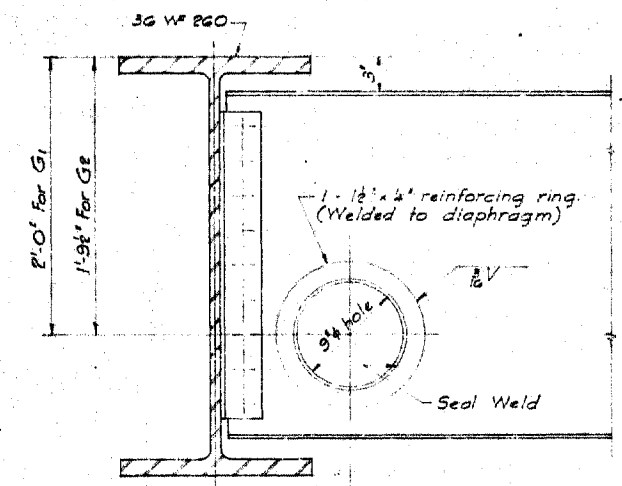
**DRAINS**  
(Galvanized after fabrication)  
Scale: 1/2" = 1'-0"



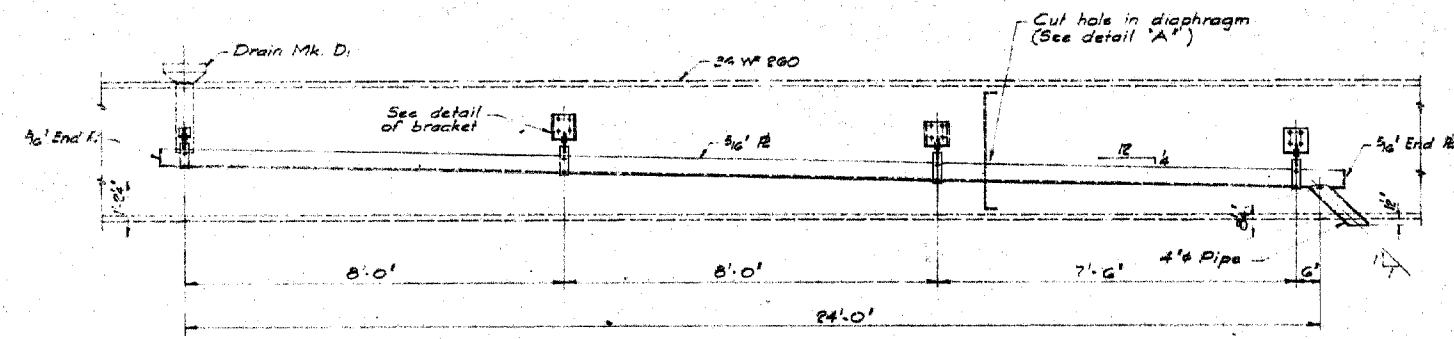
**DRAINS**  
(Galvanized after fabrication)  
Scale: 1/2" = 1'-0"



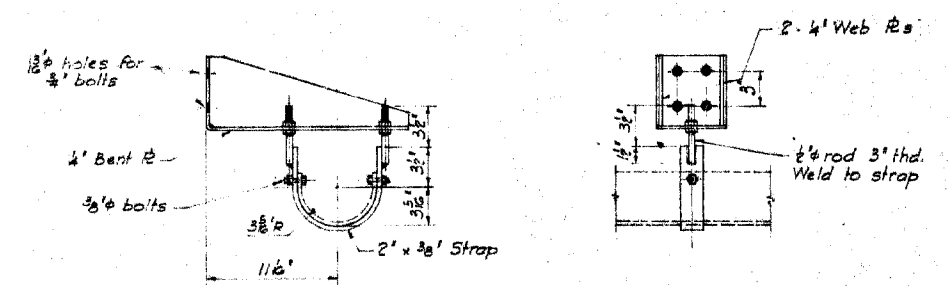
**GUTTER - MK. G2**  
(Galvanized after fabrication)  
Scale: 1/2" = 1'-0"



**DETAIL 'A'**  
Scale: 1/2" = 1'-0"



**GUTTER - MK. G1**  
(Galvanized after fabrication)  
Scale: 1/2" = 1'-0"



**BRACKET**

Galvanize only - strap  
- 3/8" bolts  
- 1/2" rods (thd.)  
nuts  
Scale: 1/2" = 1'-0"

NOTE: For General Notes see Dwg. No 1522-B

FOR AS BUILT DETAILS  
SEE SHOP DRAWING

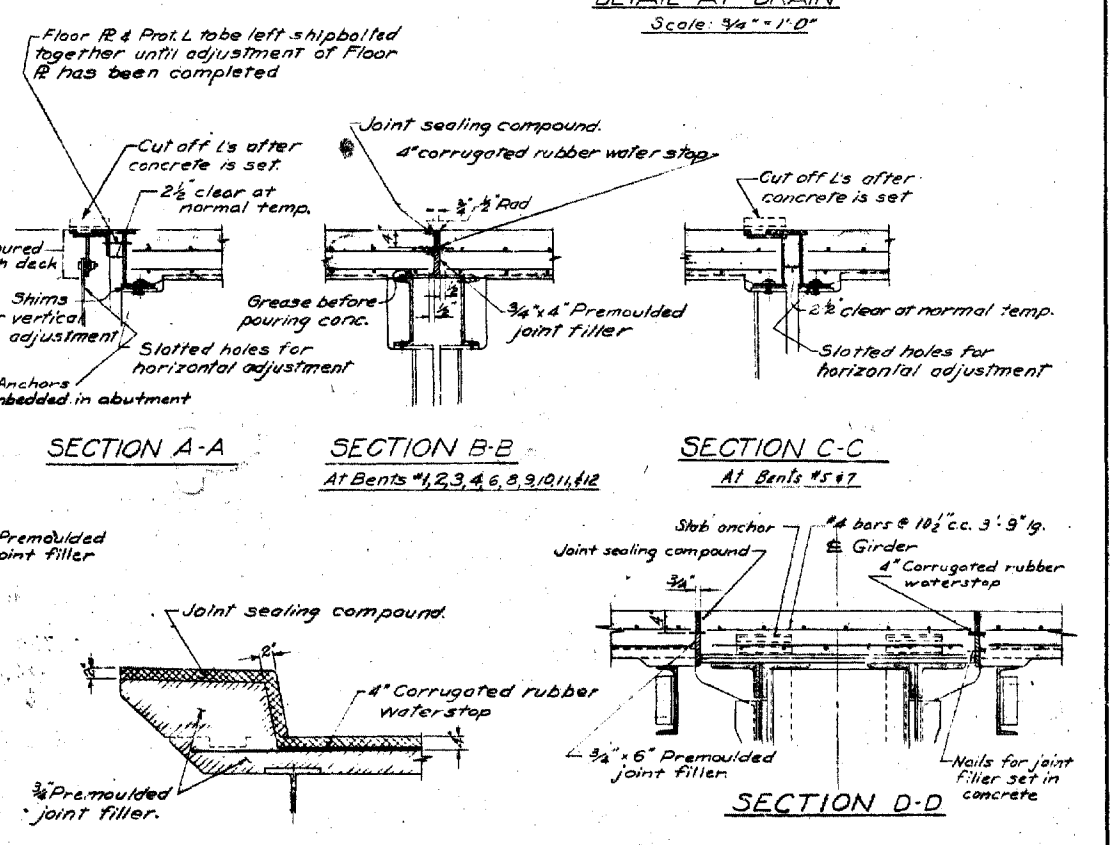
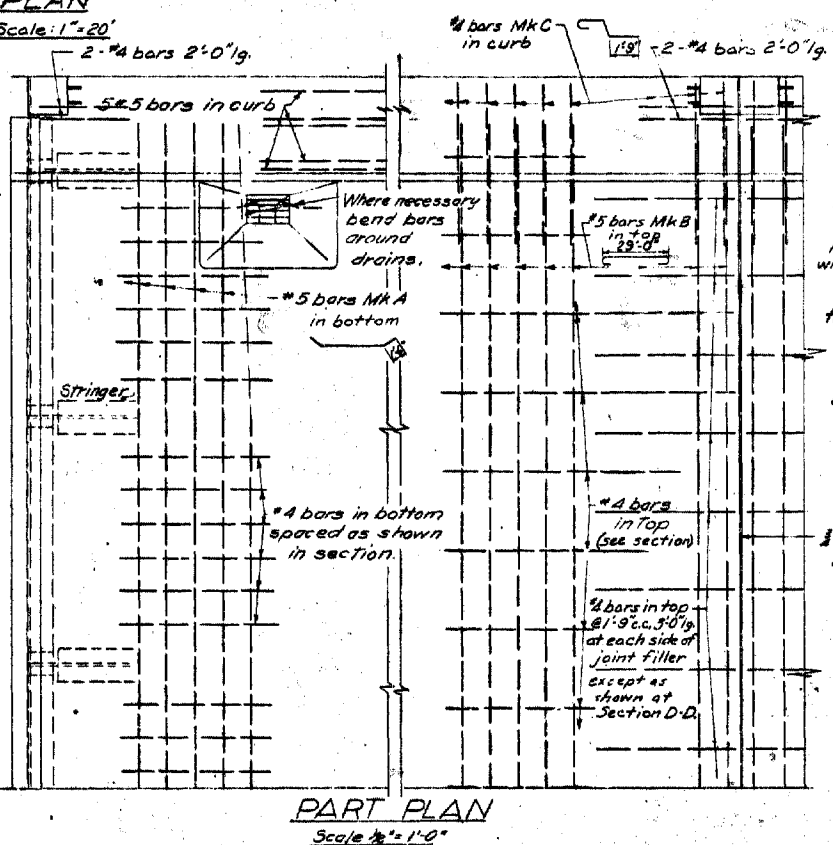
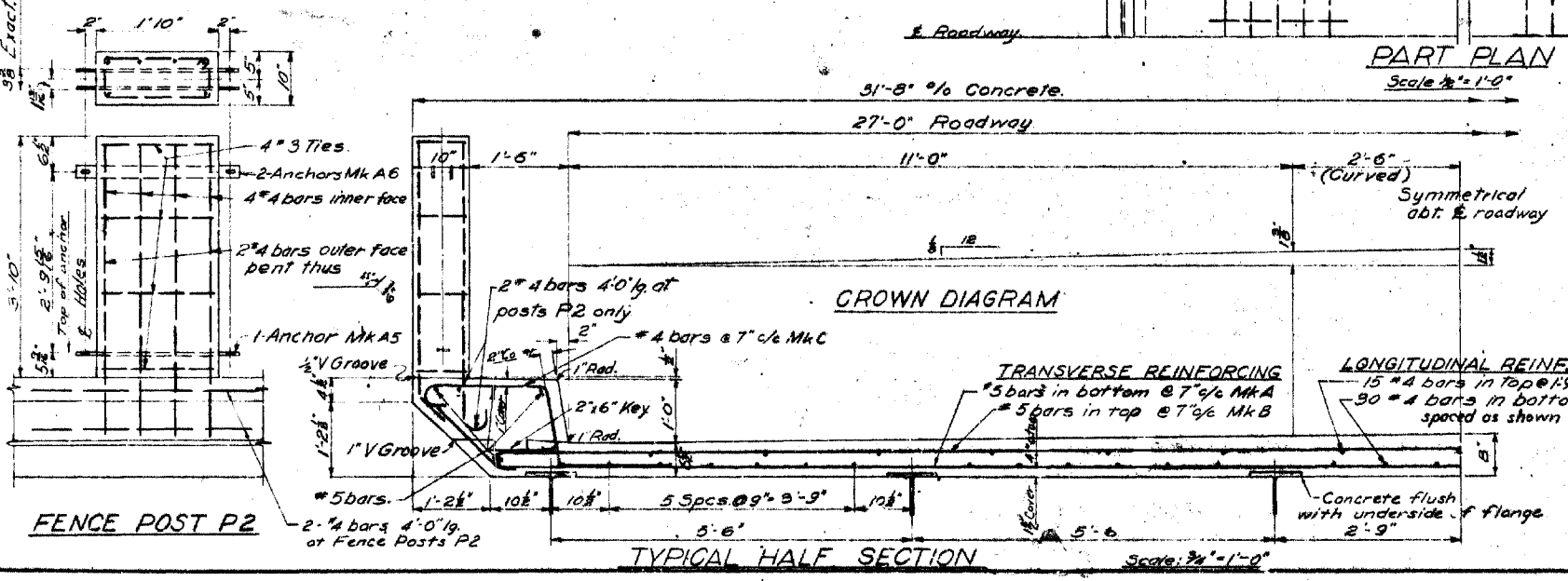
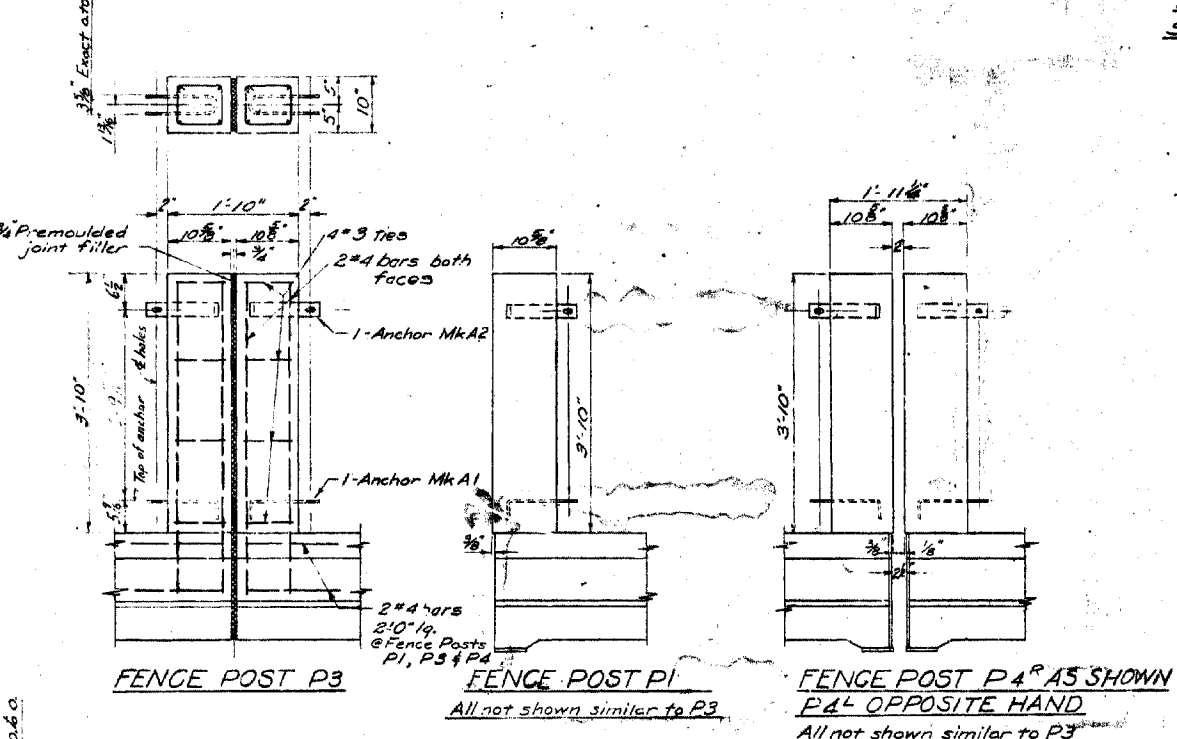
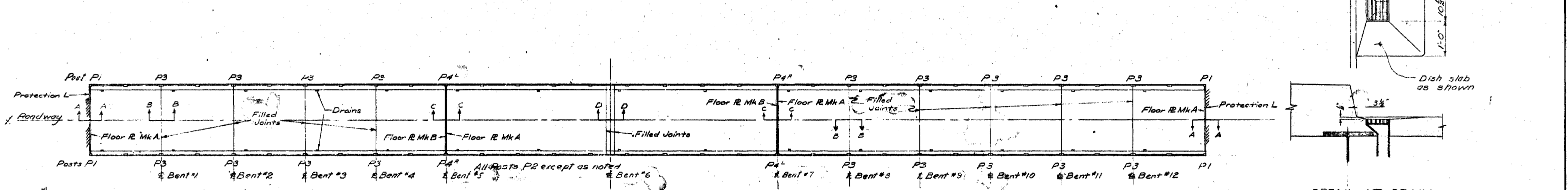
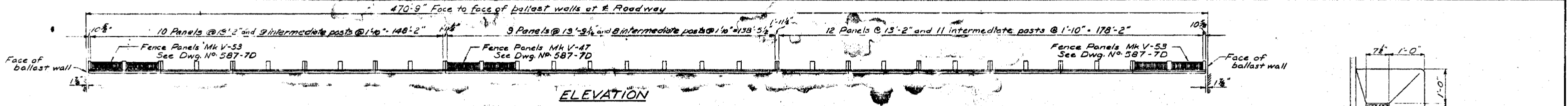
REVELSTOKE DISTRICT  
TRANS-CANADA HIGHWAY - MILE 467.35  
**SUMMIT LAKE OVERHEAD**  
STEELWORK DETAILS SHEET 2  
SCALE: 1/2" = 20'-0" & AS NOTED

REVISIONS			
Rev.	Particulars	Init.	Date

GOVT. OF BRITISH COLUMBIA  
DEPT. OF HIGHWAYS  
BRIDGE ENGINEER'S OFFICE

Made by: M.C.M. Date: 10/25/55  
Checked by: R.L. Date: 11/1/55  
Approved: [Signature] Date: 12/22/55

DRAWING NO. BR-0355  
1522-B



**NOTES**

- All concrete to be Class 'A'.
- Concrete for 50' spans to be poured in one continuous operation, simultaneously and equally from Bent #6 towards Bents #5 & #7 or from Bents #5 & #7 towards Bent #6.
- All exposed edges to have 1/2" chamfer unless noted otherwise.
- Reinforcing to have 1 1/2" cover unless shown otherwise.
- Min. dia. of pins to be used for bending bars (including hooks) to be 2x for ties and 6x for #8 bars and under. Extension of free ends on hooks to be 4x. Laps of bars for splices to be 40x. Splices to be staggered.
- Curbs to be formed & poured after roadway slab is set.
- All Reinforcing steel to be Structural grade.
- Screeds at the 70' spans only are to be set for an anticipated dead load deflection of 3/4" at mid-span and 1/2" at third points.

**Estimated Quantities**

Concrete Class 'A' including tops of Ballast Walls 372 cu.yds.  
Reinforcing Steel 18,600 lbs.

REVISIONS				GOVT. OF BRITISH COLUMBIA DEPT. OF HIGHWAYS	
Rev.	Particulars	Init.	Date	BRIDGE ENGINEER'S OFFICE	
				Init.	Date
				Made by	25/9/57
				Checked by	14/1/55
				Approved	15/2/50
				DRAWING NO.	BRIDGES