

REFERENCE PHOTOS TO CONTRACT DRAWINGS

The photos below were taken in November 7 and 11, 2022. The photos below are not intended to be encompassing of all repair locations, but rather to provide context and examples for the repair details on the contract drawings.

	<p>Stringer End Repair</p> <p>Reference to Contract Drawing: 1522-104</p>
	<p>Stringer End Repair</p> <p>Reference to Contract Drawing: 1522-104</p>



Stringer End Repair

Reference to Contract Drawing:
1522-105



Stringer End Repair

Reference to Contract Drawing:
1522-105



Stringer End Repair

Reference to Contract Drawing:
1522 - 106



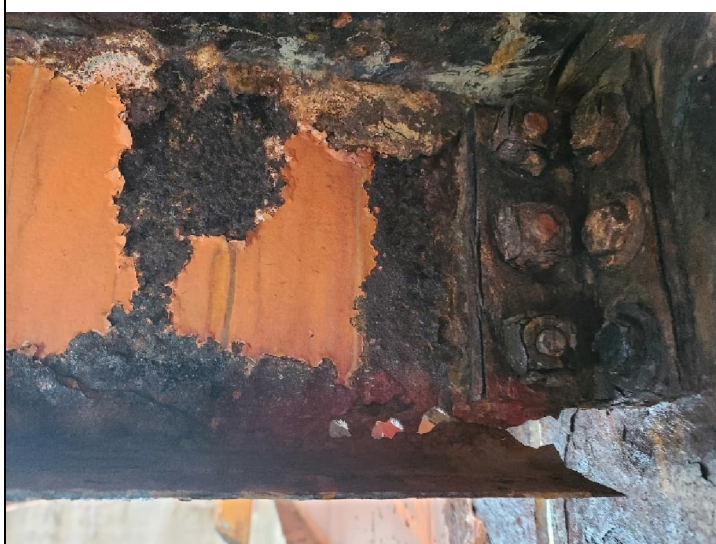
Stringer End Repair

Reference to Contract Drawing:
1522 - 106



End Diaphragm Repair

Reference to Contract Drawing:
1522-107



End Diaphragm Repair

Reference to Contract Drawing:
1522-107

	<p>End Diaphragm Repair</p> <p>Reference to Contract Drawing: 1522-108</p>
	<p>End Diaphragm Repair</p> <p>Reference to Contract Drawing: 1522-109</p>
	<p>End Diaphragm Repair</p> <p>Reference to Contract Drawing: 1522-109</p>



Partial Depth Patch Bent Repair
(Bent 5 shown)

Reference to Contract Drawing:
1522-112



Partial Depth Patch Bent Repair
(Bent 11 shown)

Reference to Contract Drawing:
1522-112



Partial Depth Patch Bent Repair
(Bent 11 shown)

Reference to Contract Drawing:
1522-112