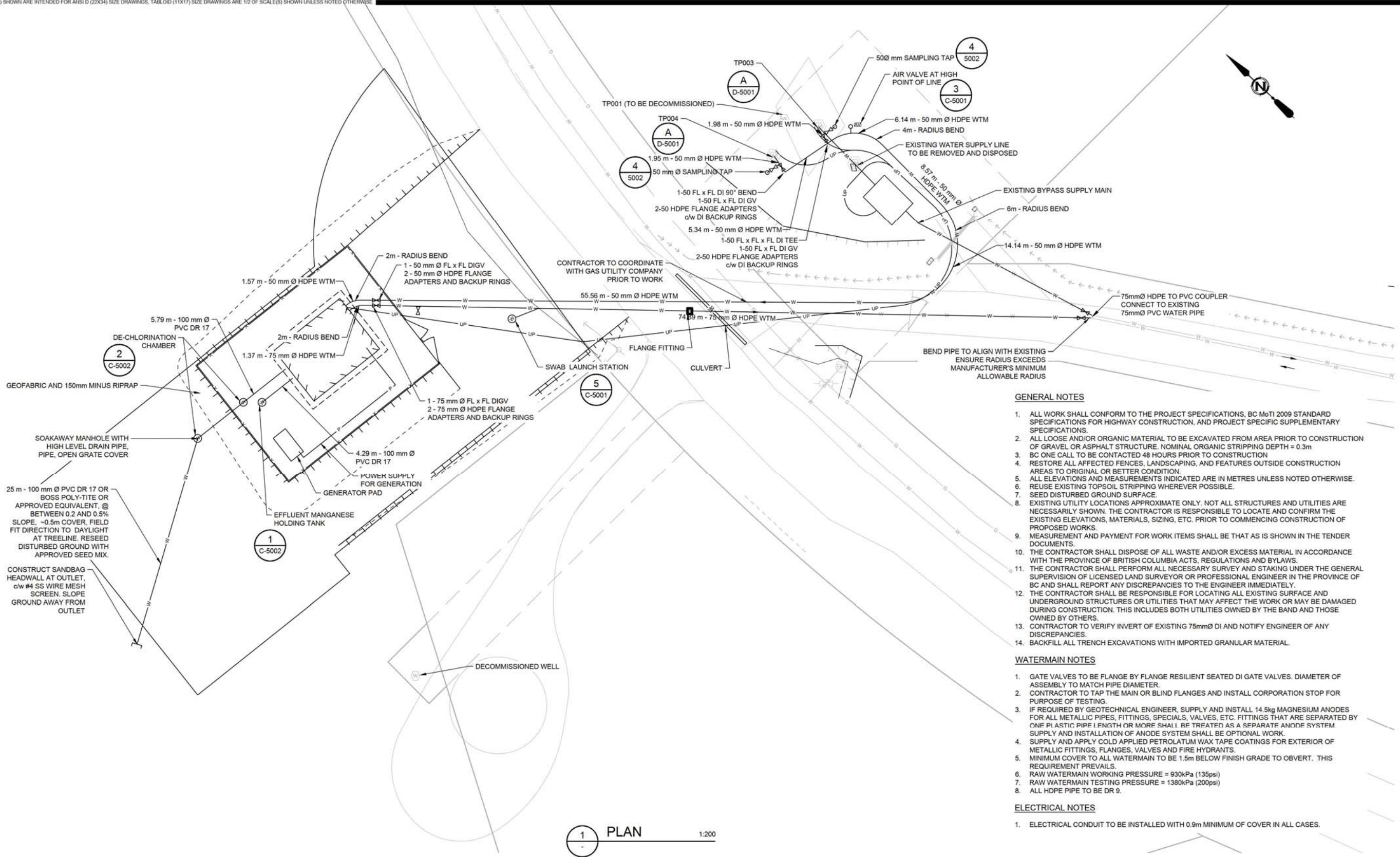


THIS DRAWING IS FOR THE USE OF THE CLIENT AND PROJECT INDICATED - NO REPRESENTATIONS OF ANY KIND ARE MADE TO OTHER PARTIES



GENERAL NOTES

1. ALL WORK SHALL CONFORM TO THE PROJECT SPECIFICATIONS, BC MoTI 2009 STANDARD SPECIFICATIONS FOR HIGHWAY CONSTRUCTION, AND PROJECT SPECIFIC SUPPLEMENTARY SPECIFICATIONS.
2. ALL LOOSE AND/OR ORGANIC MATERIAL TO BE EXCAVATED FROM AREA PRIOR TO CONSTRUCTION OF GRAVEL OR ASPHALT STRUCTURE, NOMINAL ORGANIC STRIPPING DEPTH = 0.3m
3. BC ONE CALL TO BE CONTACTED 48 HOURS PRIOR TO CONSTRUCTION
4. RESTORE ALL AFFECTED FENCES, LANDSCAPING, AND FEATURES OUTSIDE CONSTRUCTION AREAS TO ORIGINAL OR BETTER CONDITION.
5. ALL ELEVATIONS AND MEASUREMENTS INDICATED ARE IN METRES UNLESS NOTED OTHERWISE.
6. REUSE EXISTING TOPSOIL STRIPPING WHEREVER POSSIBLE.
7. SEED DISTURBED GROUND SURFACE.
8. EXISTING UTILITY LOCATIONS APPROXIMATE ONLY. NOT ALL STRUCTURES AND UTILITIES ARE NECESSARILY SHOWN. THE CONTRACTOR IS RESPONSIBLE TO LOCATE AND CONFIRM THE EXISTING ELEVATIONS, MATERIALS, SIZING, ETC. PRIOR TO COMMENCING CONSTRUCTION OF PROPOSED WORKS.
9. MEASUREMENT AND PAYMENT FOR WORK ITEMS SHALL BE THAT AS IS SHOWN IN THE TENDER DOCUMENTS.
10. THE CONTRACTOR SHALL DISPOSE OF ALL WASTE AND/OR EXCESS MATERIAL IN ACCORDANCE WITH THE PROVINCE OF BRITISH COLUMBIA ACTS, REGULATIONS AND BYLAWS.
11. THE CONTRACTOR SHALL PERFORM ALL NECESSARY SURVEY AND STAKING UNDER THE GENERAL SUPERVISION OF LICENSED LAND SURVEYOR OR PROFESSIONAL ENGINEER IN THE PROVINCE OF BC AND SHALL REPORT ANY DISCREPANCIES TO THE ENGINEER IMMEDIATELY.
12. THE CONTRACTOR SHALL BE RESPONSIBLE FOR LOCATING ALL EXISTING SURFACE AND UNDERGROUND STRUCTURES OR UTILITIES THAT MAY AFFECT THE WORK OR MAY BE DAMAGED DURING CONSTRUCTION. THIS INCLUDES BOTH UTILITIES OWNED BY THE BAND AND THOSE OWNED BY OTHERS.
13. CONTRACTOR TO VERIFY INVERT OF EXISTING 75mm DI AND NOTIFY ENGINEER OF ANY DISCREPANCIES.
14. BACKFILL ALL TRENCH EXCAVATIONS WITH IMPORTED GRANULAR MATERIAL.

WATERMAIN NOTES

1. GATE VALVES TO BE FLANGE BY FLANGE RESILIENT SEATED DI GATE VALVES. DIAMETER OF ASSEMBLY TO MATCH PIPE DIAMETER.
2. CONTRACTOR TO TAP THE MAIN OR BLIND FLANGES AND INSTALL CORPORATION STOP FOR PURPOSE OF TESTING.
3. IF REQUIRED BY GEOTECHNICAL ENGINEER, SUPPLY AND INSTALL 14.5kg MAGNESIUM ANODES FOR ALL METALLIC PIPES, FITTINGS, SPECIALS, VALVES, ETC. FITTINGS THAT ARE SEPARATED BY ONE PLASTIC PIPE LENGTH OR MORE SHALL BE TREATED AS A SEPARATE ANODE SYSTEM. SUPPLY AND INSTALLATION OF ANODE SYSTEM SHALL BE OPTIONAL WORK.
4. SUPPLY AND APPLY COLD APPLIED PETROLATUM WAX TAPE COATINGS FOR EXTERIOR OF METALLIC FITTINGS, FLANGES, VALVES AND FIRE HYDRANTS.
5. MINIMUM COVER TO ALL WATERMAIN TO BE 1.5m BELOW FINISH GRADE TO OBVERT. THIS REQUIREMENT PREVAILS.
6. RAW WATERMAIN WORKING PRESSURE = 930kPa (135psi)
7. RAW WATERMAIN TESTING PRESSURE = 1380kPa (200psi)
8. ALL HDPE PIPE TO BE DR 9.

ELECTRICAL NOTES

1. ELECTRICAL CONDUIT TO BE INSTALLED WITH 0.9m MINIMUM OF COVER IN ALL CASES.

1 PLAN 1:200

I:\s\en-4-01\projects\20120509\00_Twp_DWS_imp_Constr\Working_Dwg\100_Civil\2059-01-C-1001.dwg
DATE: 2017-05-26, Jacob Teeseult



THE INFORMATION CONTAINED ON THIS DRAWING, OTHER THAN CHANGES MADE BY ASSOCIATED ENGINEERING (B.C.) LTD. ORIGINATED FROM SOURCES OTHER THAN THE DESIGN PROFESSIONAL AND ASSOCIATED ENGINEERING (B.C.) LTD. DOES NOT WARRANT OR REPRESENT THAT SUCH INFORMATION IS ACCURATE OR REPRESENTS THE ORIGINAL DESIGN AS CONTAINED IN THE CONTRACT DOCUMENTS.

REV	DATE	DESIGN	DRAWN	DESCRIPTION
3	2017APR27	M. OWEN	M. KAPRIBAK	RECORD DRAWING
2	2015SEP09	M. OWEN	M. KAPRIBAK	ISSUED FOR CONSTRUCTION
1	2015AUG17	M. OWEN	A. SANGSTER	REVISED AS SHOWN
0	2015AUG04	M. OWEN	J. FORD	ISSUED FOR TENDER

LITTLE SHUSWAP LAKE
INDIAN BAND

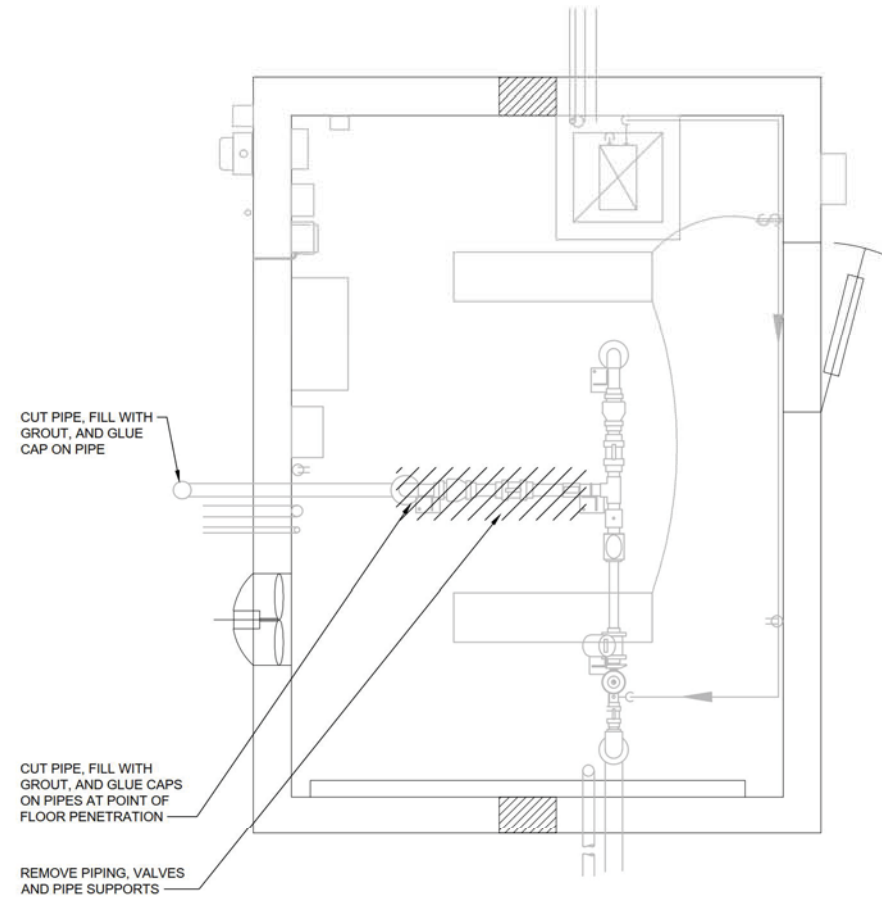
NORTH BAY I.R. NO. 5
DOMESTIC WATER SYSTEM
IMPROVEMENTS
20122059-01



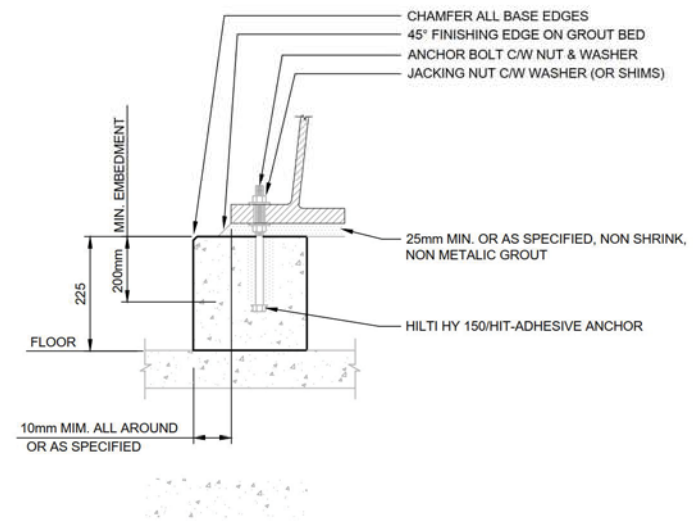
CIVIL
WELL AND WTP CONNECTION
PLAN

SCALE: AS SHOWN

DRAWING	REVISION	SHEET
2059-01-C-1001	2	4 / 33



PLAN 1:20
EXISTING PUMP BUILDING DEMOLITION



NOTES

1. SLEEVE TYPE ANCHOR BOLT MAY BE REPLACED WITH J-BOLT TYPE ANCHOR OR HILTI ADHESIVE ANCHOR BOLT IF APPROVED BY ENGINEER AND PUMP SUPPLIER.
2. SLEEVE TYPE ANCHOR BOLT MAY BE OMITTED FOR SMALL PUMPS UNDER 20kW AND REPLACED WITH J-BOLT OR HILTI ADHESIVE ANCHOR.
3. ANCHOR BOLT, NUTS AND WASHERS - SIZE, NUMBER REQUIRED, THREAD PROJECTION AND LENGTH TO SUIT PUMP MANUFACTURERS SPECIFICATIONS.
4. JACKING NUTS MAY BE REPLACED WITH LEVELING SHIMS. SHIMS ARE TO REMAIN IN PLACE, THEN PLACE GROUT.

DETAIL NTS
PUMP ANCHORING DETAIL



THE INFORMATION CONTAINED ON THIS DRAWING, OTHER THAN CHANGES MADE BY ASSOCIATED ENGINEERING (B.C.) LTD., ORIGINATED FROM SOURCES OTHER THAN THE DESIGN PROFESSIONAL AND ASSOCIATED ENGINEERING (B.C.) LTD. DOES NOT WARRANT OR REPRESENT THAT SUCH INFORMATION IS ACCURATE OR REPRESENTS THE ORIGINAL DESIGN AS CONTAINED IN THE CONTRACT DOCUMENTS.

REV	DATE	DESIGN	DRAWN	DESCRIPTION
2	2017MAY12	K. KOHUT	S. KE	RECORD DRAWINGS
1	2015SEP09	K. KOHUT	S. LUI	ISSUED FOR CONSTRUCTION
0	2015AUG04	K. KOHUT	S. LUI	ISSUED FOR TENDER

LITTLE SHUSWAP LAKE
INDIAN BAND

NORTH BAY I.R. NO. 5
DOMESTIC WATER SYSTEM
IMPROVEMENTS
20122059-01

SCALE: AS SHOWN



PROCESS MECHANICAL
DETAILS
SHEET 3 OF 3

DRAWING	REVISION	SHEET
2059-01-D-5003	2	25 / 33