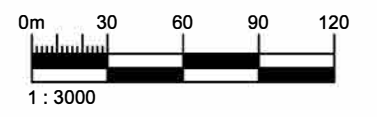


### PIT DEVELOPMENT LEGEND

<ul style="list-style-type: none"> <li> NATURAL EMBANKMENT</li> <li> PIT FACE</li> <li> TEST PIT</li> <li> TEST HOLE</li> <li> TEST PIT (DEPLETED)</li> <li> ROAD</li> <li> CREEK</li> <li> TRAIL</li> <li> CADASTRE</li> <li> TANTALIS</li> <li> GRAVEL RESERVE BOUNDARY</li> <li> MATERIAL DISPOSAL AREA</li> </ul>	<ul style="list-style-type: none"> <li> TREELINE</li> <li> CONTOURS</li> <li> BUILDING (symbolic)</li> <li> IRON PIN</li> <li> SWAMP</li> <li> STOCKPILE</li> <li> NO DISTURBANCE</li> </ul>
---	--

- #### DRAWING NOTES:
1. Base data provided from Trim Map 82N.044 and LiDAT 2018-09-28, (5m Contours 2018 LiDAR)
  2. Cadastre and Tantalis Lines were provided from online sources.
  3. Some extraction may have occurred since the last GPS survey of the pit was undertaken, therefore pit faces and stockpiles may not be representative of current conditions.
  4. The existing creek channel is to be maintained.
  5. Grading and leveling may be required prior to work in pit.
  6. All works are to be carried out in accordance with the Health, Safety and Reclamation Code for Mines in BC.
  7. Any burning must adhere to SS 200.02.02.



Ministry of Transportation and Infrastructure  
 Southern Interior Region  
 Geotechnical and Materials Branch

<b>PIT PLAN</b>		
<b>OLDMAN PIT #3068</b>		
SA12 - ROCKY MOUNTAIN DISTRICT		
DRAWN BY: S. Ruiz	PROJECTION: UTM Zone 11	SCALE: AS SHOWN
CHECKED BY: S. Lee	DATUM: NAD83	DATE: 17 October 2023
FILE NAME: oldman_3068_disposalplan.dwg	REG. DRAWING NUMBER: 2	FIGURE 2