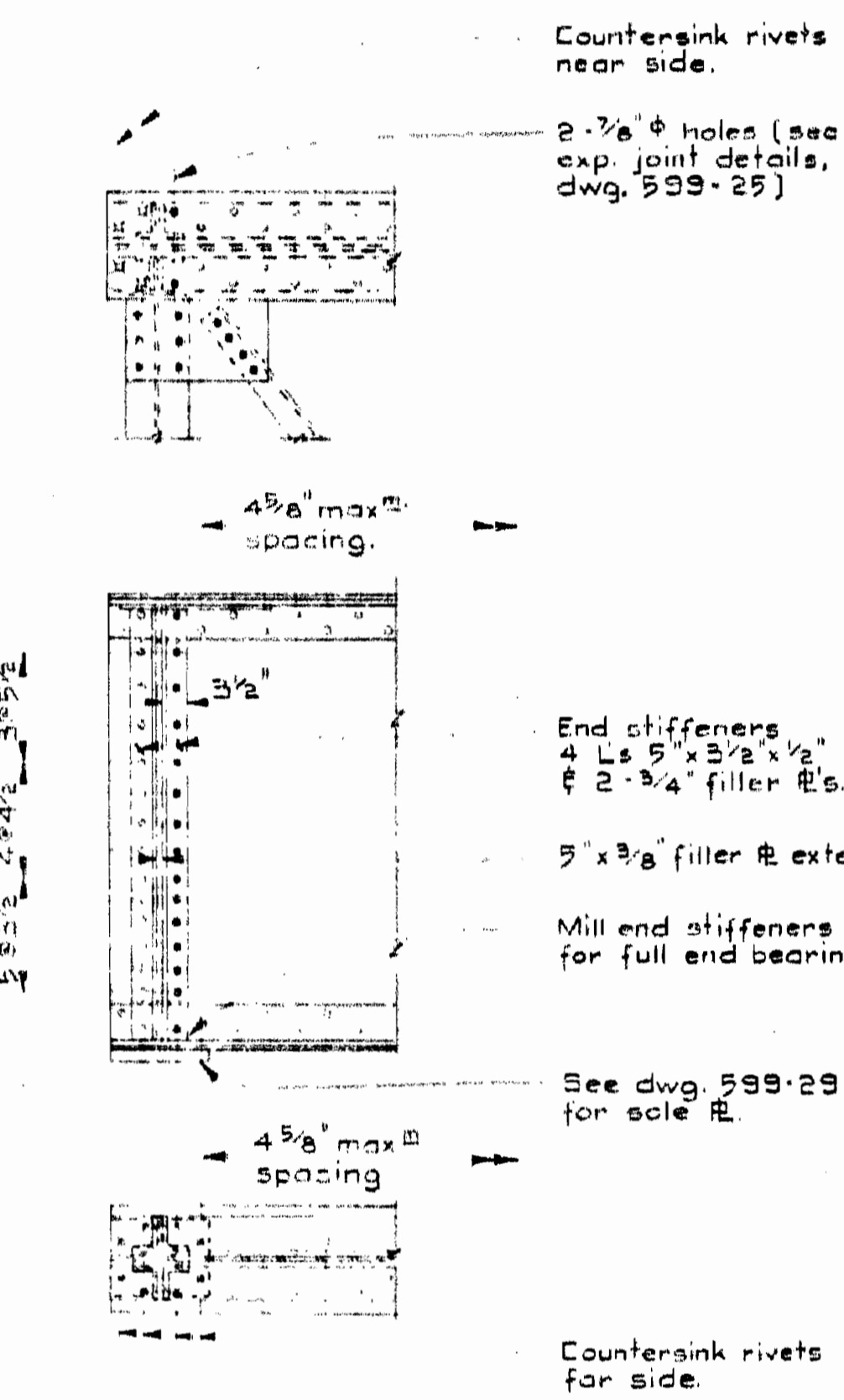
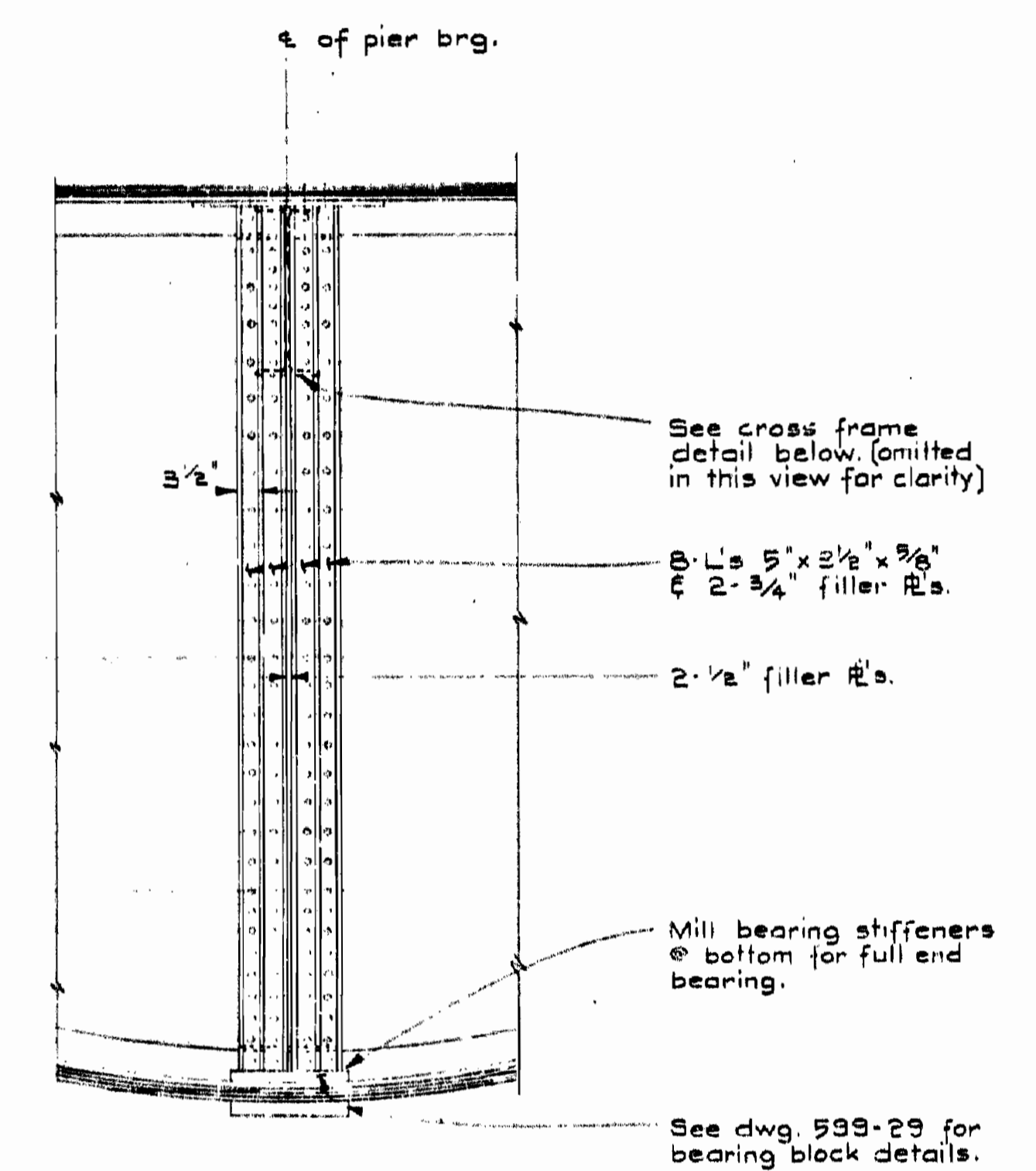


**NOTE**  
 Location of stiffeners to suit beam layout, see dwg. 599-27.  
 Girder web to be 1/2" thk throughout. See dwg. 599-27 for geometry.  
 Flange L's to be 2-L's 6" x 6" x 3/4" throughout.

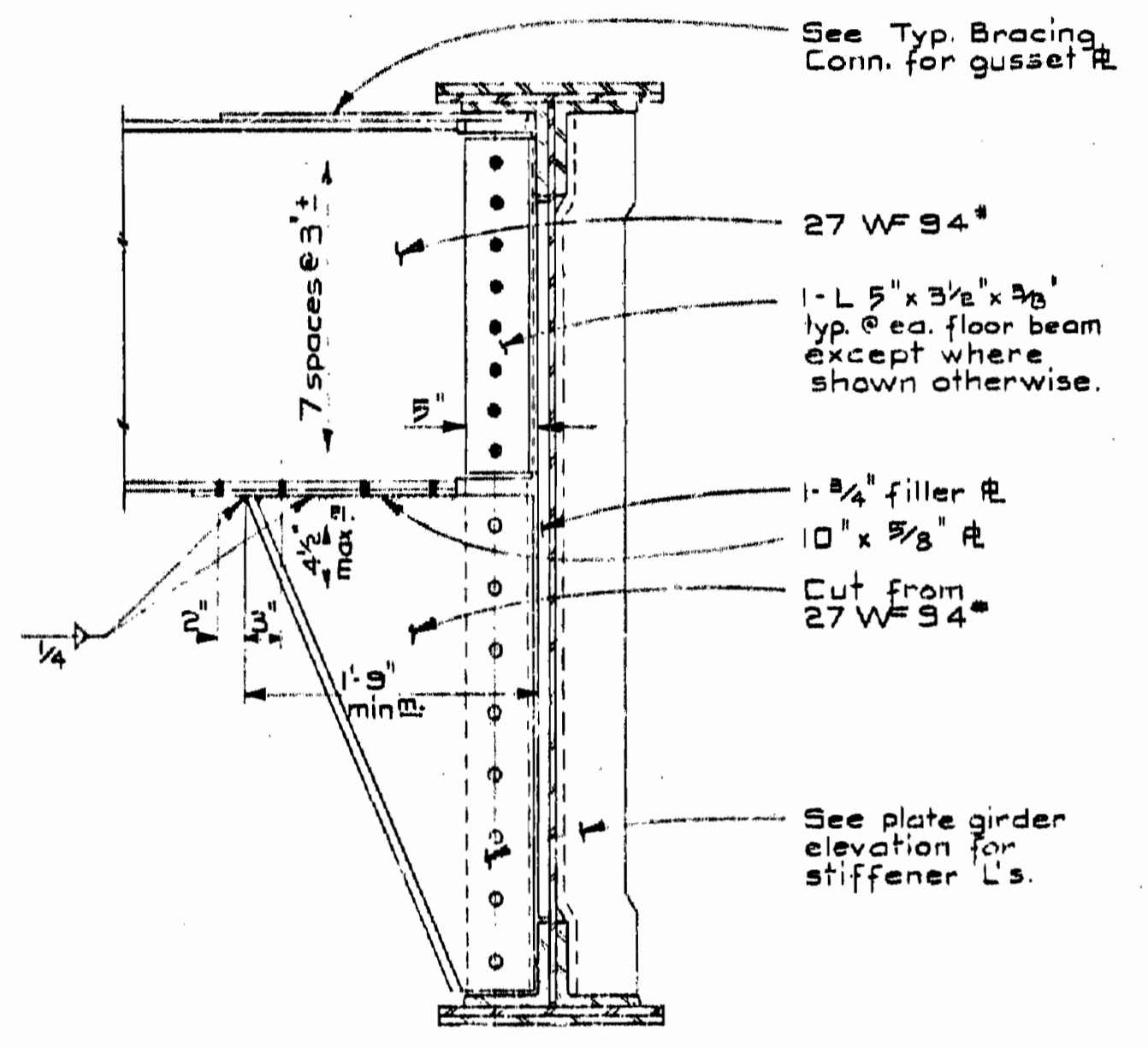
**PLATE GIRDER**  
 Scale: 3/16"=1'-0"



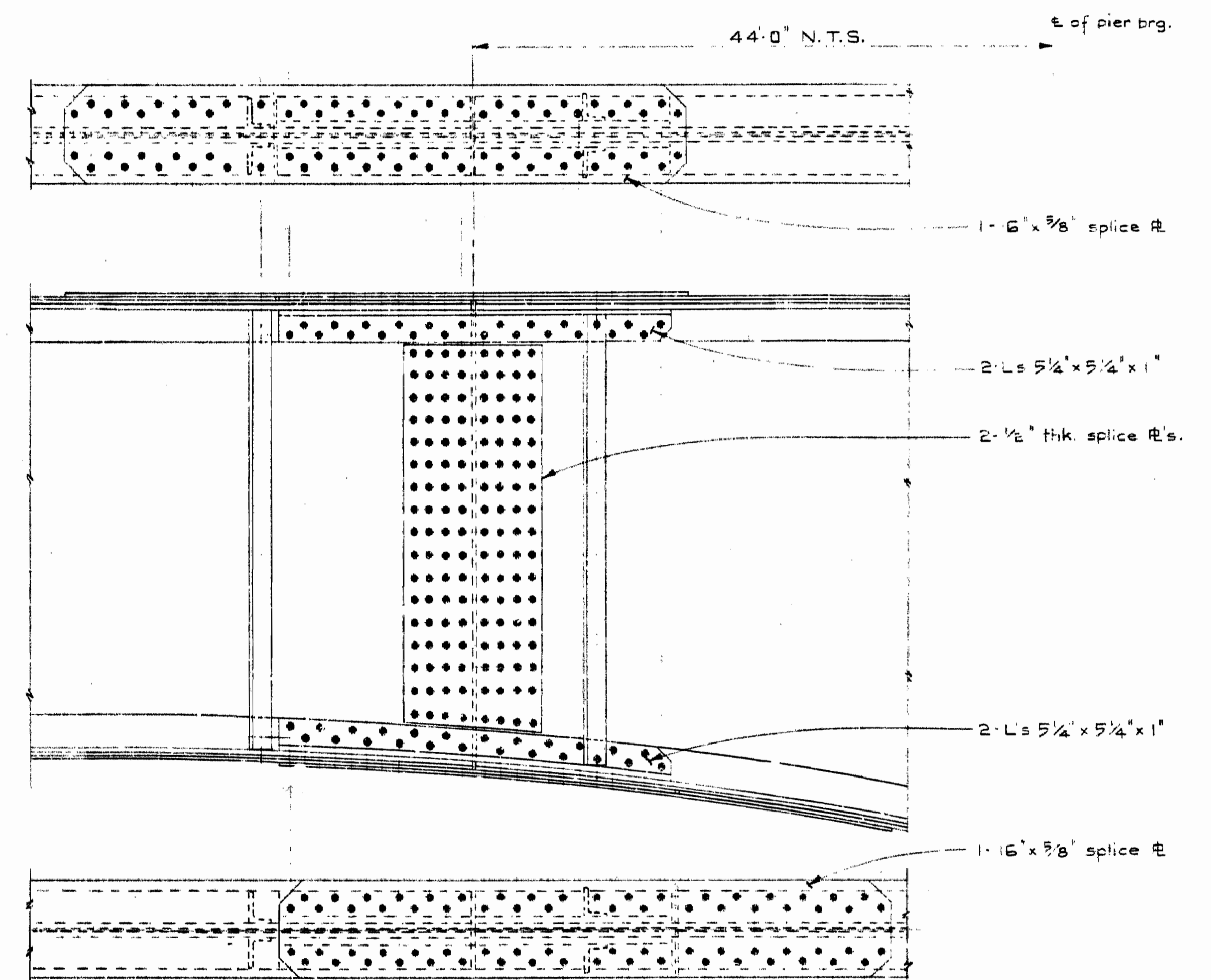
**DETAIL X**  
 Scale: 1/2"=1'-0"



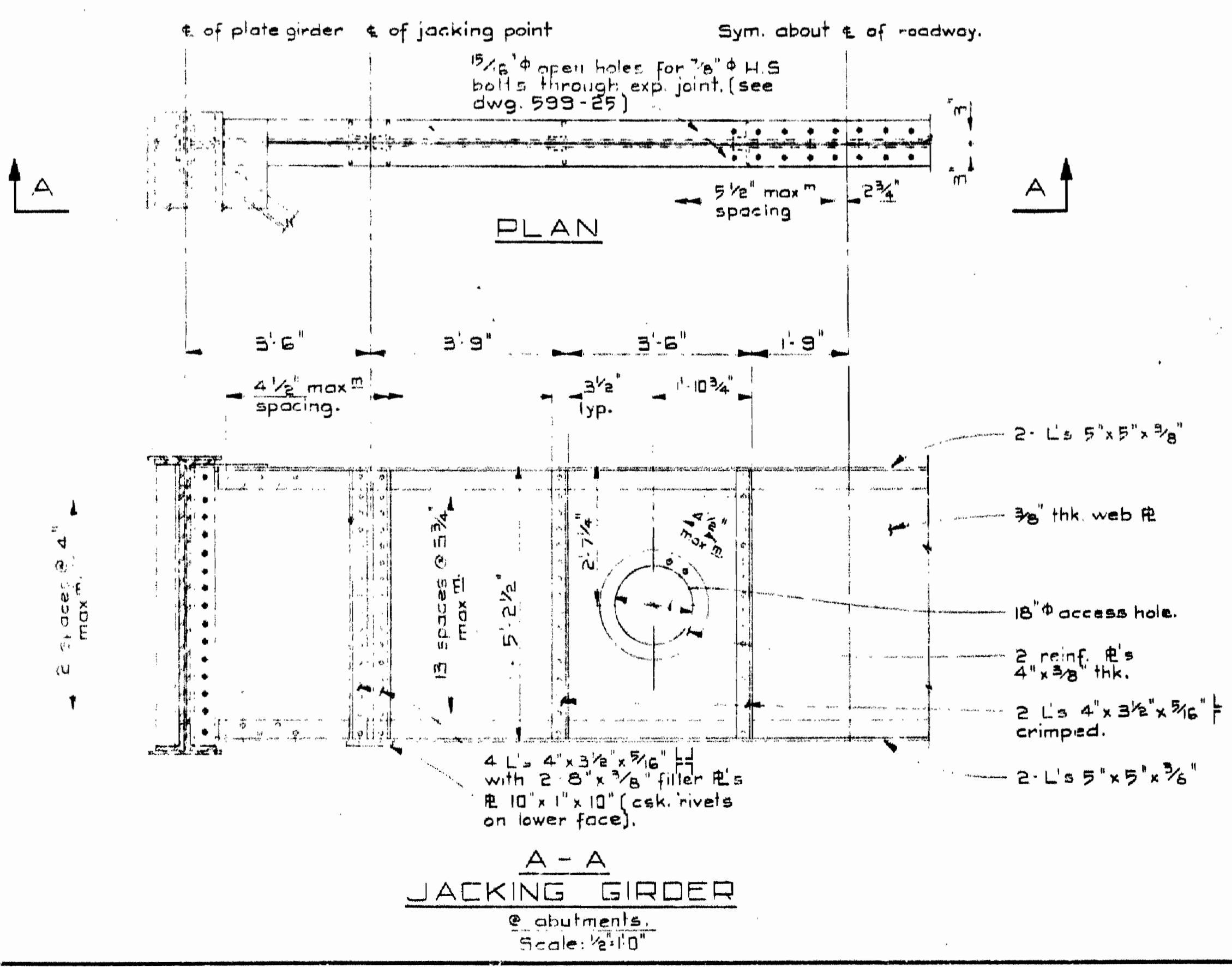
**DETAIL Y**  
 Scale: 1/2"=1'-0"



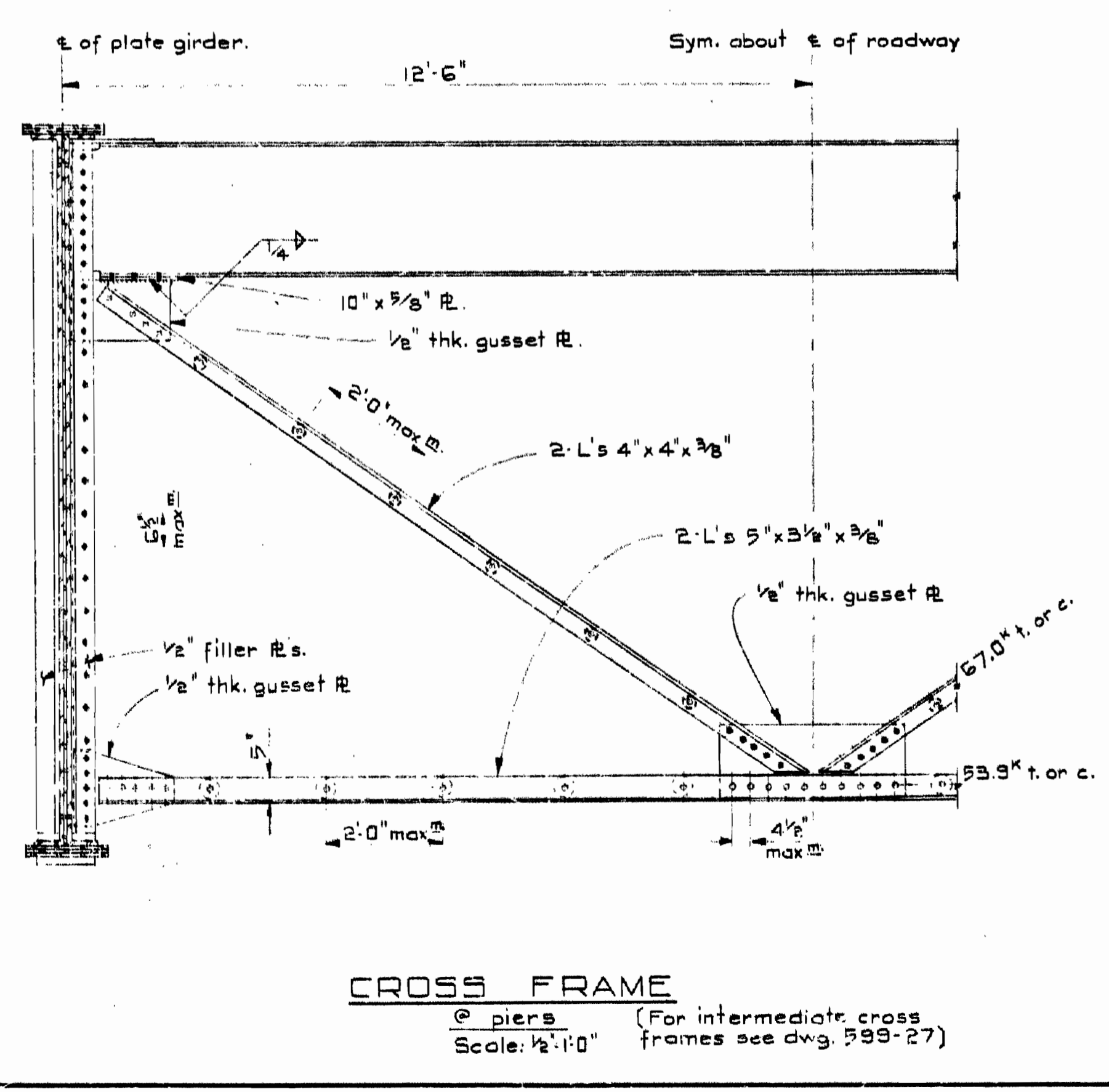
**TYP. SECTION**  
 (@ floor beams except @ jacking girder & cross frames.)  
 Scale: 1"=1'-0"



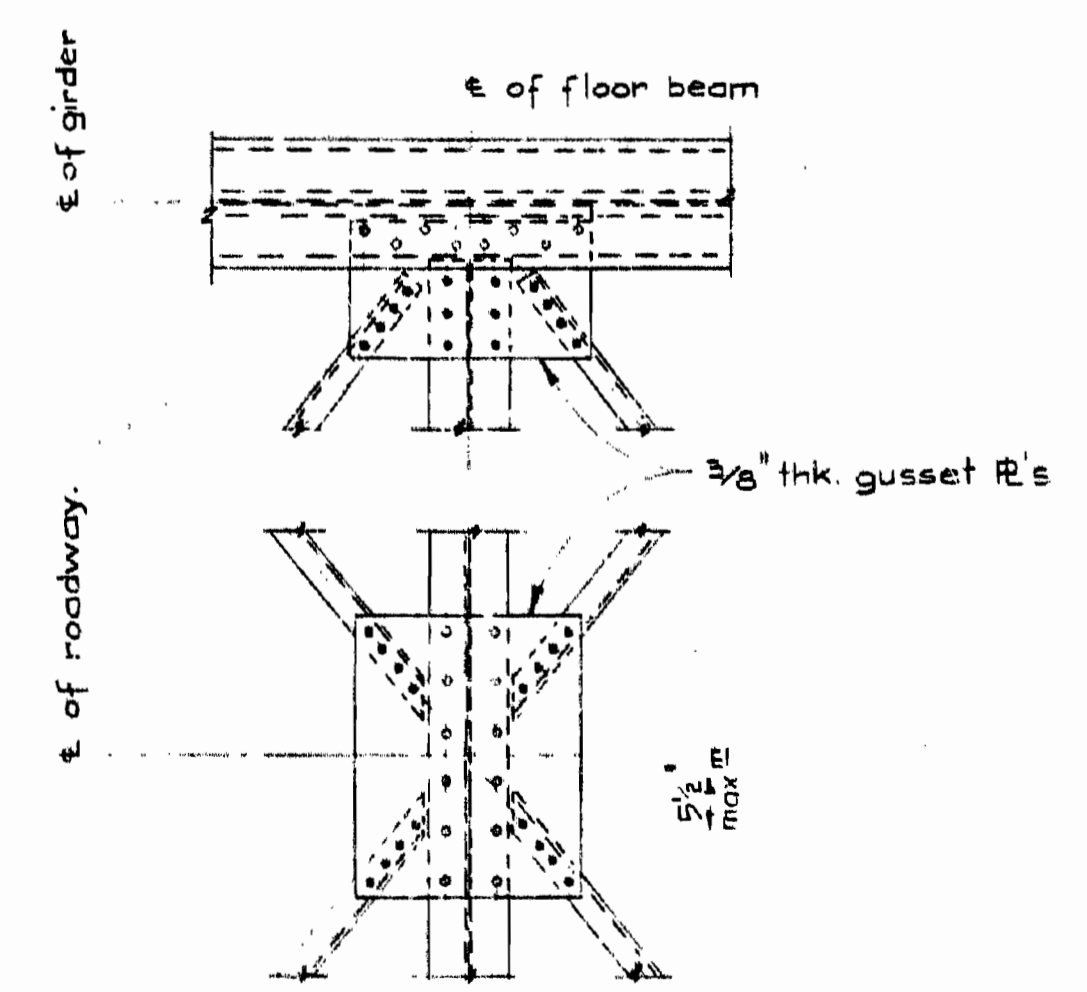
**DETAIL Z**  
 (Field splice)  
 Scale: 3/4"=1'-0"



**A-A JACKING GIRDER**  
 @ abutments.  
 Scale: 1/2"=1'-0"



**CROSS FRAME**  
 @ piers (For intermediate cross frames see dwg. 599-27)  
 Scale: 1/2"=1'-0"



**TYP. BRACING CONNECTIONS**  
 Scale: 1/2"=1'-0"

GENERAL APPROVED  
 [Signature]  
 CHIEF ENGINEER DEPT. OF HIGHWAYS

**NOTES**  
 For general notes see dwg. 599-27.



For as built connections see Structural Steel Shop dwgs.	
NO/DATE	REVISION
GOV'T OF THE PROV. OF BRITISH COLUMBIA DEPT. OF HIGHWAYS	
CASTLEGAR - NELSON HIGHWAY SHOREACRES BRIDGE OVER SLOCAN RIVER	
STRUCTURAL STEEL SHEET # 2	
CHOUKALOS, WOODBURN, HOOLFY & MCKENZIE LTD. CONSULTING ENGINEERS 1159 West Broadway, Vancouver 9, B.C.	
Dr. RA	Date
Ch. J.	June 9, 56
Scale: As noted	DWG. 599-26 X