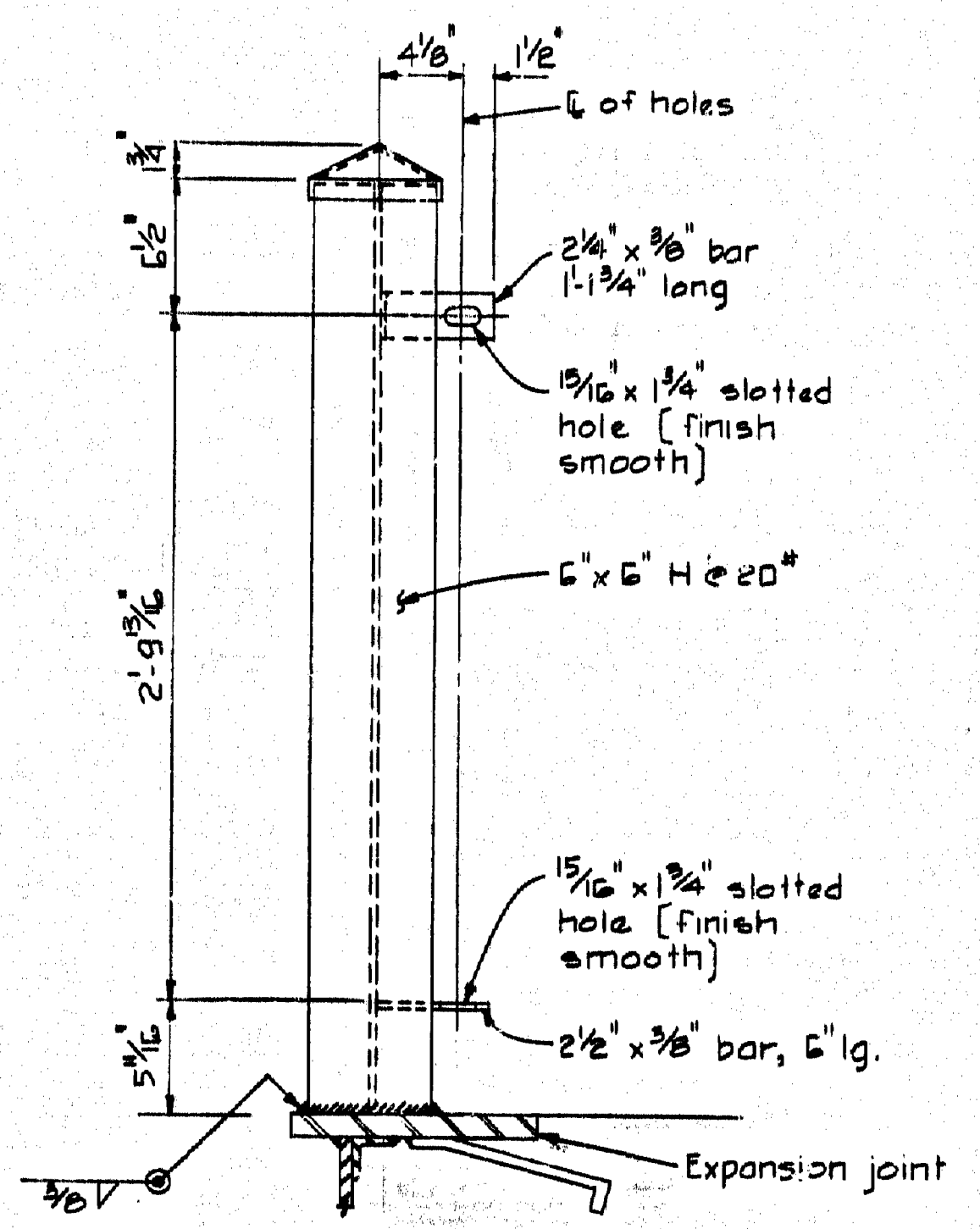
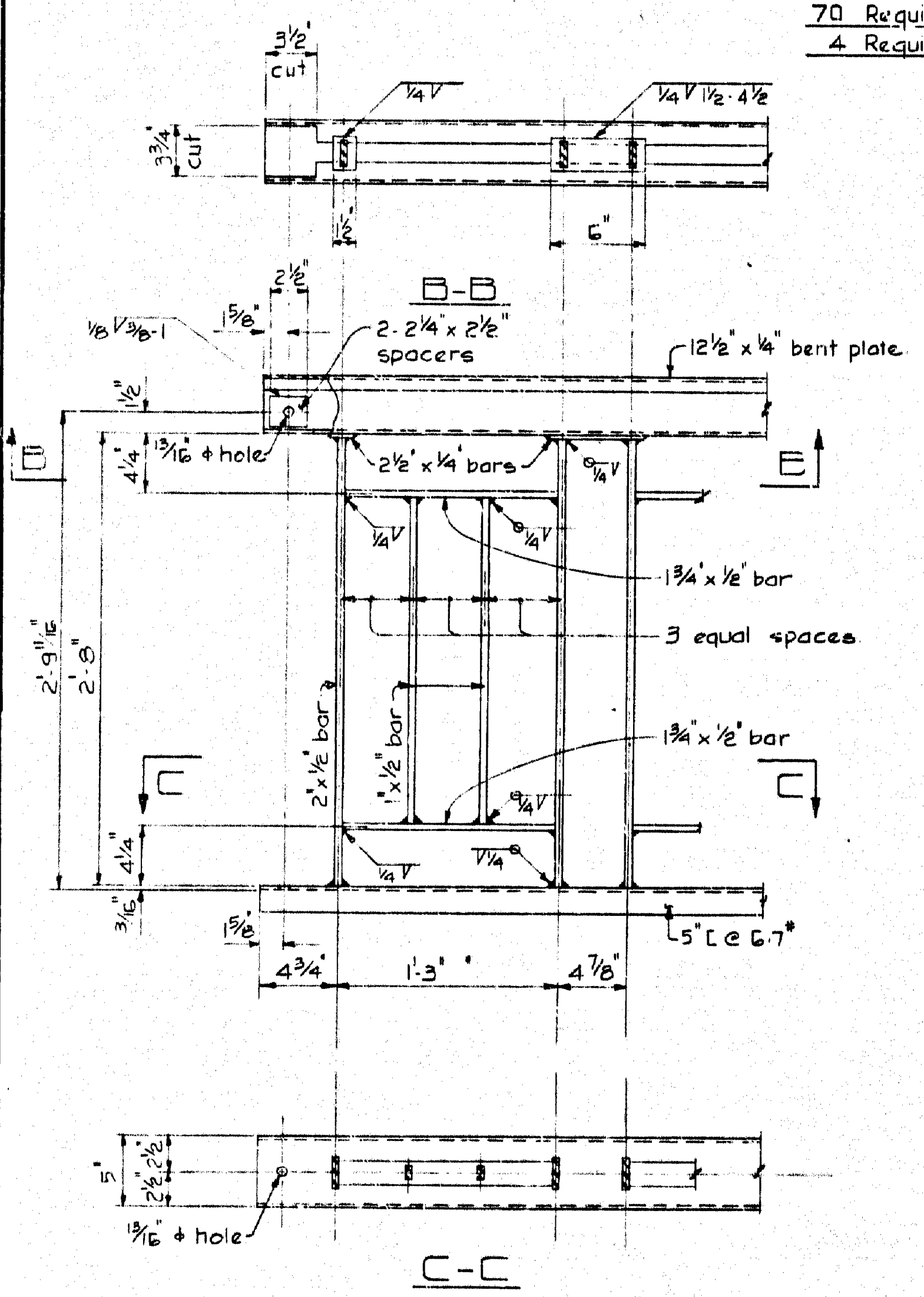


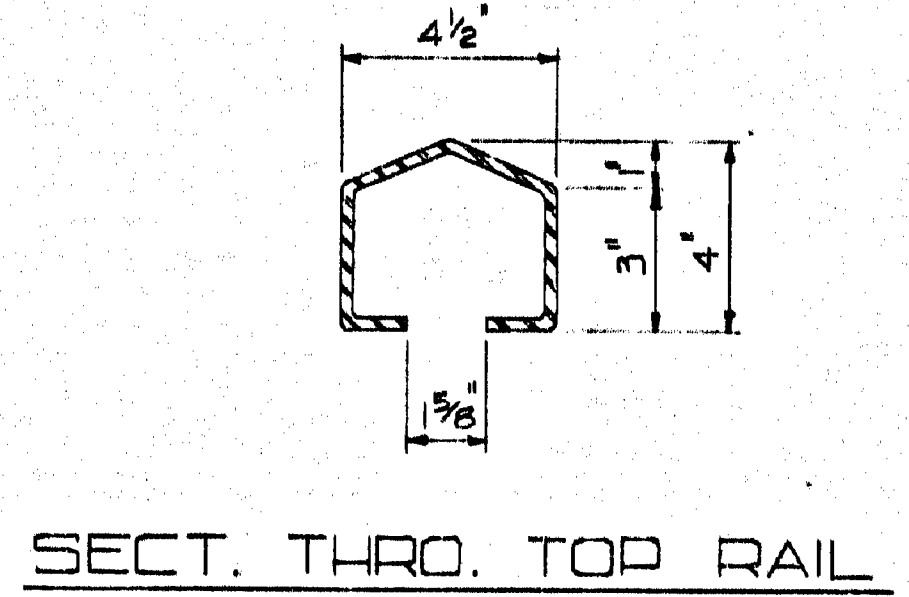
**GENERAL ARRGT. OF FENCE PANEL**  
 70 Required - Weight of one panel is 375 #  
 4 Required As Noted



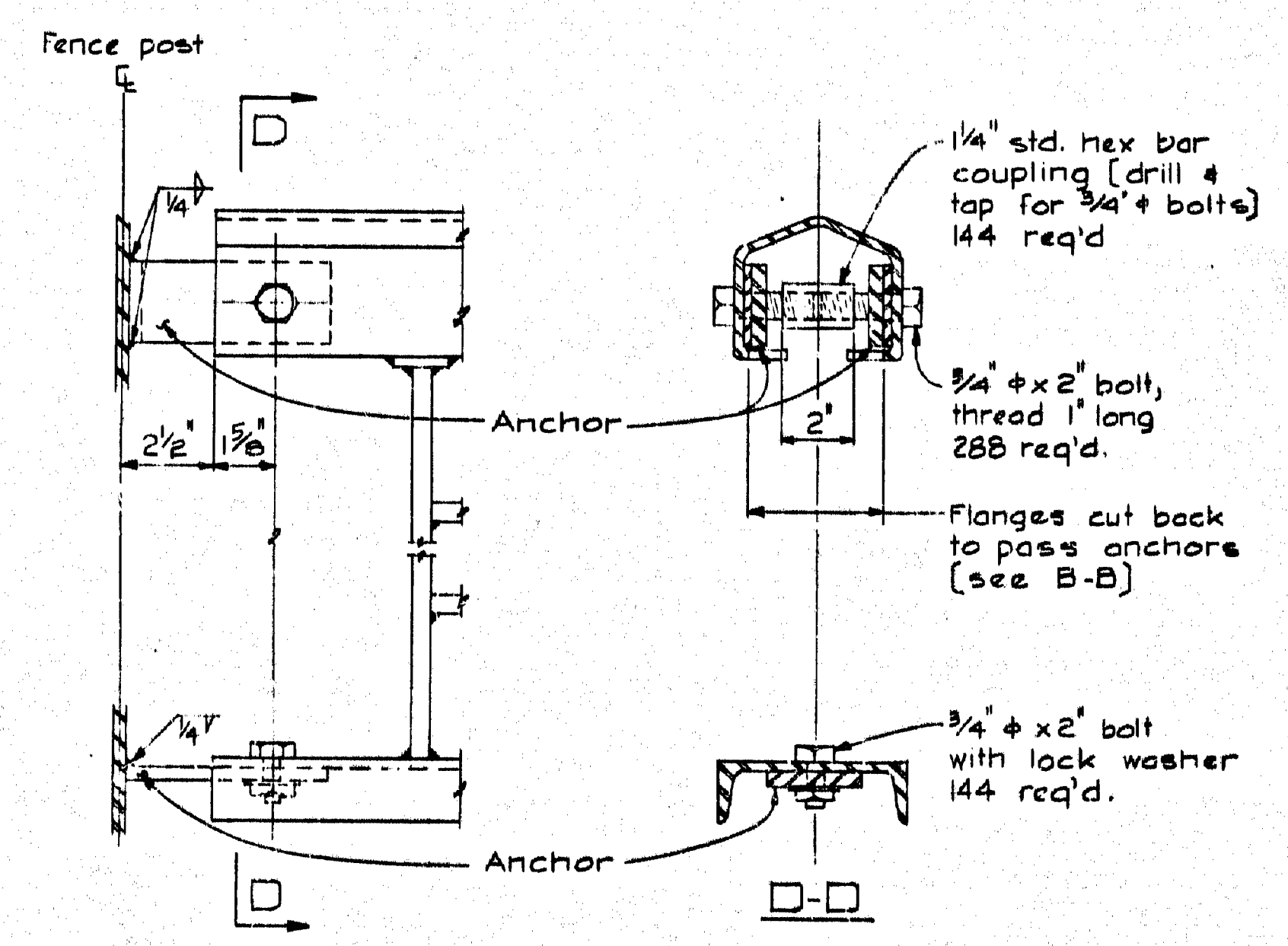
**DETAIL OF END POST**  
 4 THUS



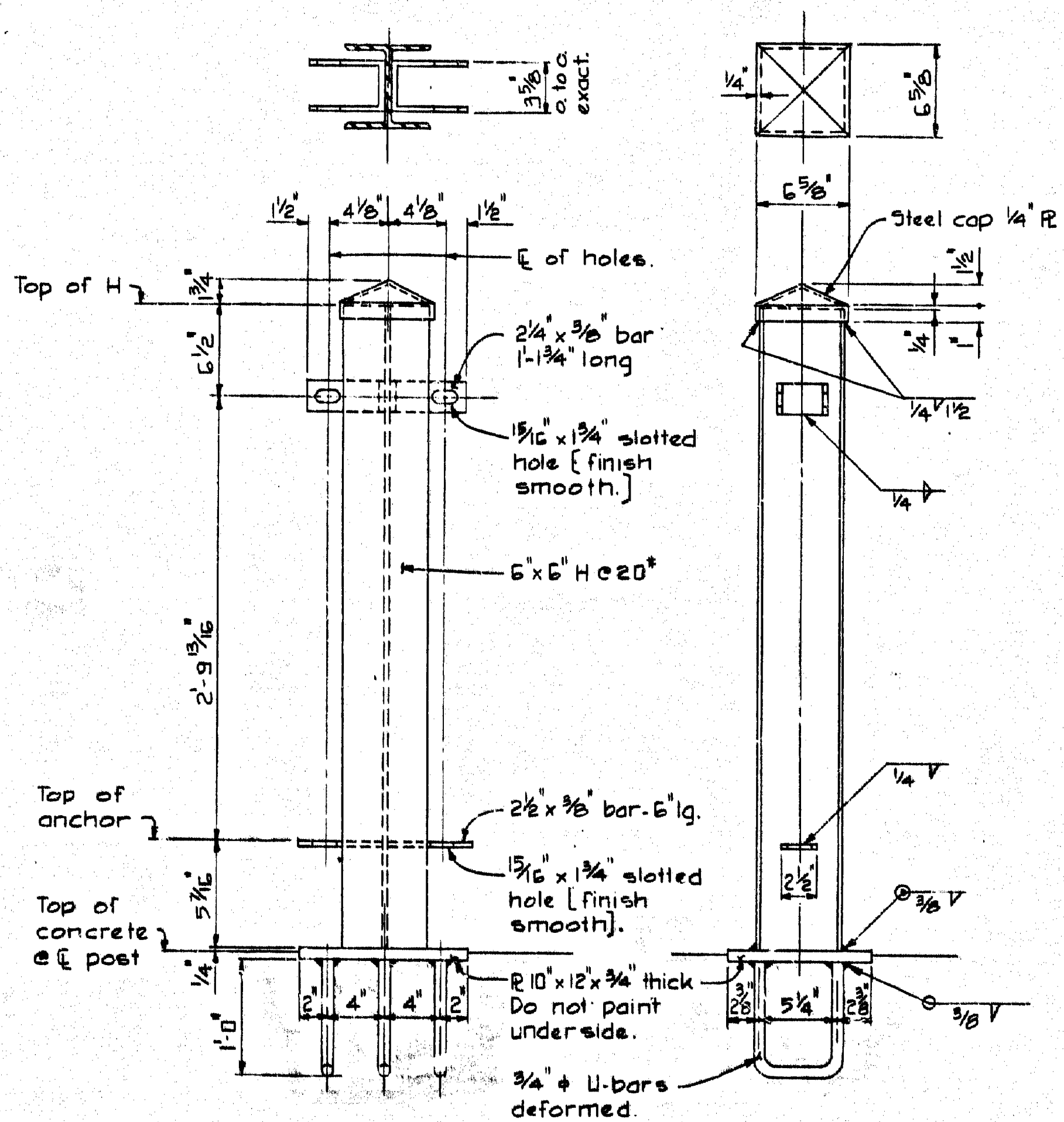
**PANEL DETAIL**



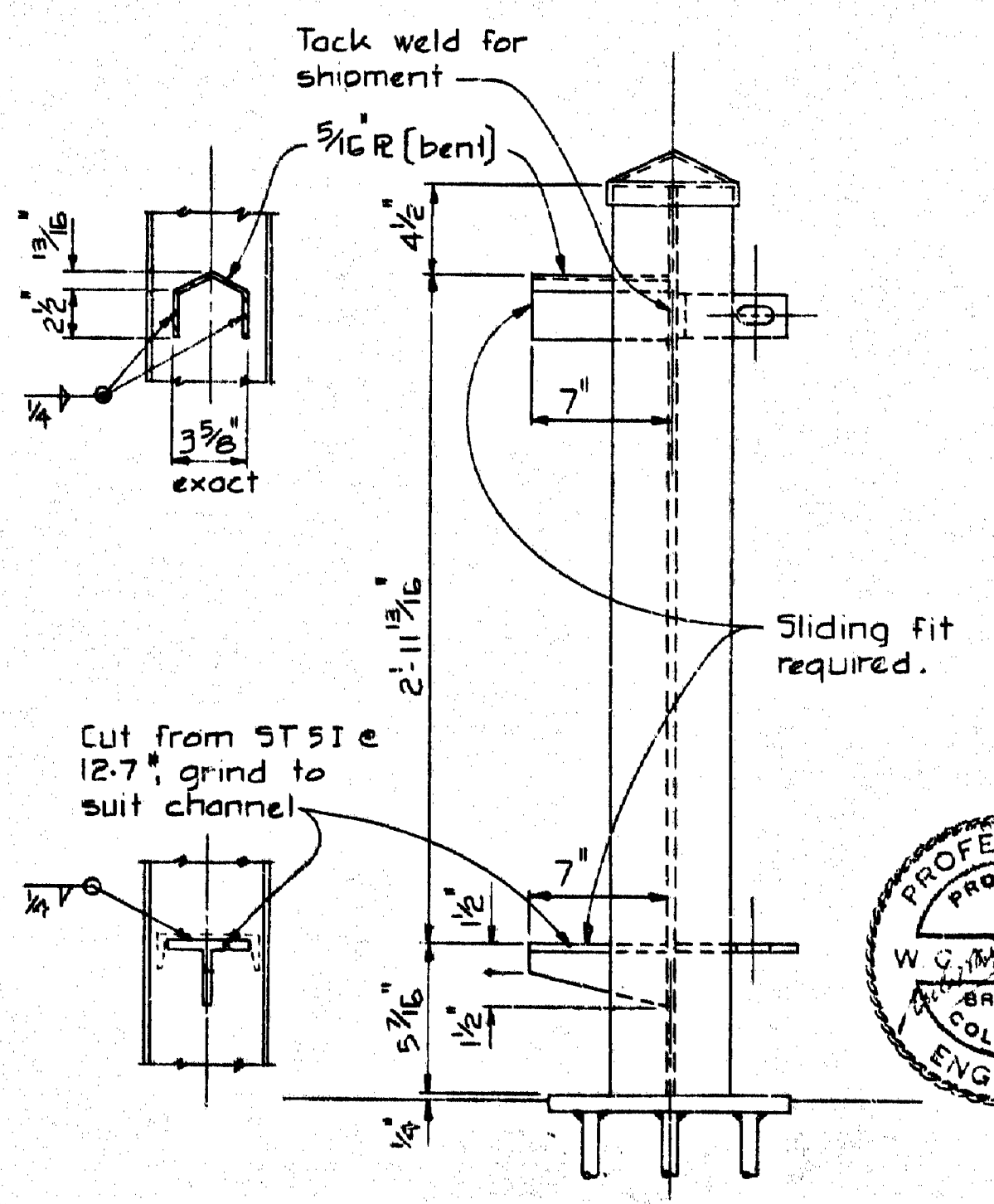
**SECT. THRO. TOP RAIL**



**TYPICAL PANEL CONNECTION**



**DETAIL OF INTERMEDIATE POST**  
 - 68 THUS -



**EXPANSION JOINT POST - 4 THUS**  
 Similar to interm. post except where noted

GENERAL ARRANGEMENT APPROVED  
 W. G. MCKENZIE  
 PROFESSIONAL ENGINEER

**NOTES**

- MATERIAL**  
 Medium Structural Steel in accordance with C.S.A. Specifications G40.4.
- PAINT**  
 All parts except those embedded in concrete shall be given one shop coat of Red Lead Alkyd/Oil, designation D.O.H. A2, in accordance with Section 216 of the General Specifications. Field painting shall consist of one coat of Red Lead Alkyd/Oil, designation D.O.H. B1, followed by one coat of Green [Alkyd], designation D.O.H. C1, in accordance with Section 217 of the General Specifications.
- INSTALLATION**  
 Posts shall be properly aligned & temporarily attached to the anchorage by spot-welding. Full welds shall be made to anchorage only after alignment of posts is approved by the Engineer or Inspector.
- WELDING**  
 Welding shall be in accordance with Standard Specifications for Welded Highway & Railway Bridges of the American Welding Society, 1947.  
 Top connection on one side of expansion joint posts shall be welded in the field.

NO.	DATE	REVISION
GOV'T. OF THE PROV. OF BRITISH COLUMBIA DEPT. OF HIGHWAYS		
CASTLEGAR - NELSON HIGHWAY SHOREACRES BRIDGE OVER SLOCAN RIVER		
HANDRAIL DETAILS		
CHOUKALOS, WOODBURN, HOOLEY & MCKENZIE LTD. CONSULTING ENGINEERS 1159 West Broadway, Vancouver 9, B.C.		
Drawn: D.R.H.	Date: June 3, 1961	Scale: 1/2", 1 1/2", 3" = 1'-0"
Checked: WML	Date: June 3, 1961	DWG. 599-26