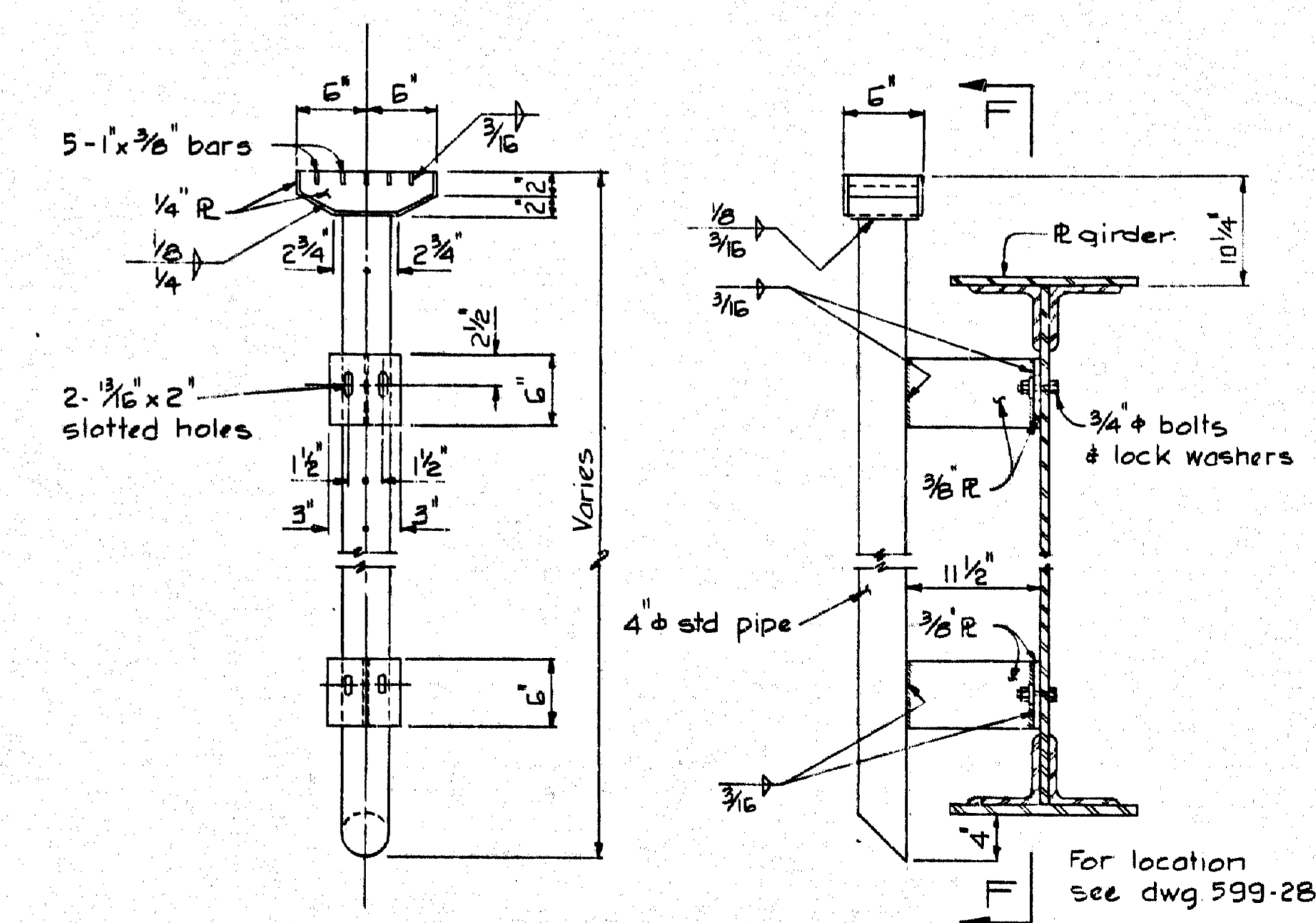
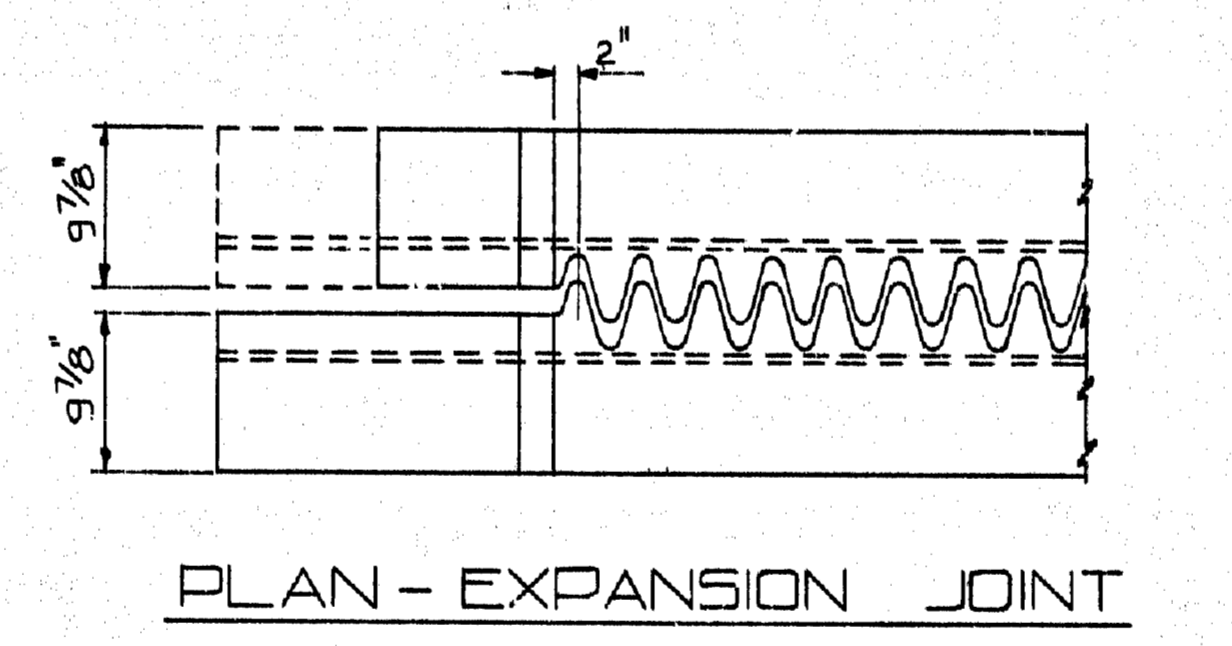
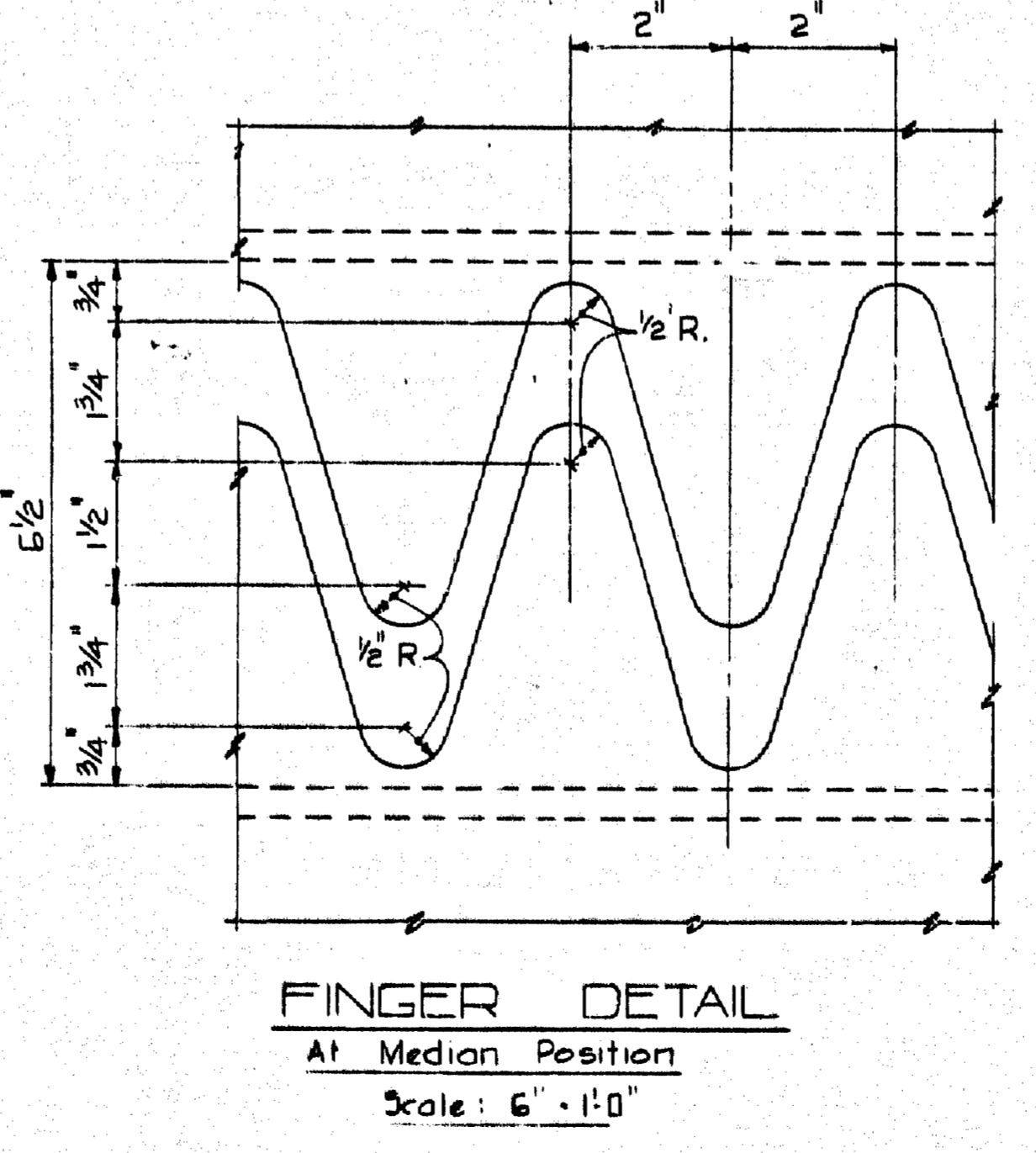


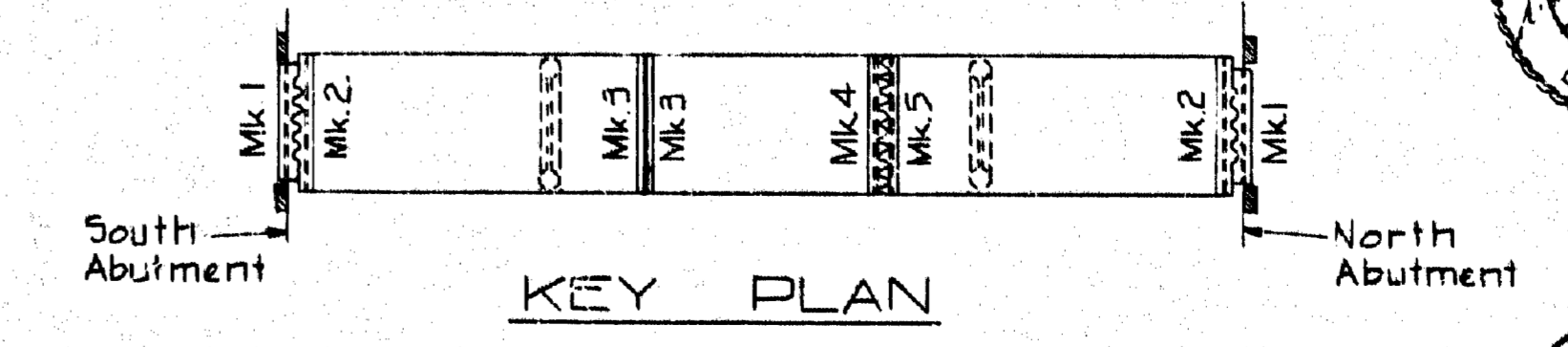
ASSEMBLY DETAIL
Expansion joints



TYPICAL ROAD DRAIN
22 THUS



FINGER DETAIL
At Median Position
Scale: 6" = 1'-0"



KEY PLAN

NOTES

MATERIAL
Steelwork shall be Medium Structural steel conforming to C.S.A. Specification G 40.4.

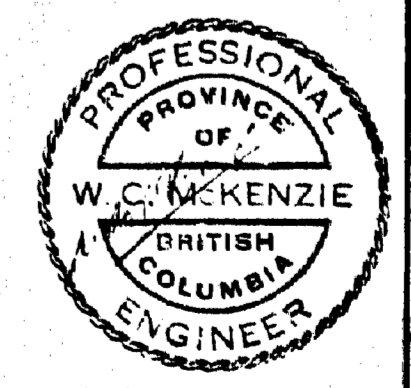
INSTALLATION
Joints shall be set with their top surfaces parallel to the road grade.

WELDING
Welding shall be in accordance with Standard Specifications for Welded Highway & Railway Bridges of the American Welding Society, 1947.

PAINTING
All parts except those embedded in concrete, or galvanized surfaces, shall be given one shop coat of Red Lead Alkyd/oil designation D.O.H. A2, in accordance with Section 216 of the General Specifications. Field painting shall consist of one coat of Red Lead Alkyd/oil designation D.O.H. B1, followed by one coat of Aluminum, designation D.O.H. C3, in accordance with Section 217 of the General Specifications.
All surfaces not accessible after erection shall have both field coats as specified above applied in the shop.

GALVANIZING
Drainage inlets, pipes, & gratings to be hot-dipped galvanized after assembly.
All field welds to be thoroughly chipped, cleaned & painted with Galvacon or approved equal.

BOLTS
All bolts to be 3/8" mach. bolts unless noted otherwise.



| | | |
|--|-------------|---------------------|
| NO DATE | | REVISION |
| GOV'T. OF THE PROV. OF BRITISH COLUMBIA DEPT. OF HIGHWAYS | | |
| CASTLEGAR - NELSON HIGHWAY SHOREACRES BRIDGE OVER SLOCAN RIVER | | |
| EXPANSION JOINTS & DRAINS | | |
| CHOUKALOS, WOODBURN, HOOLEY & MCKENZIE LTD. CONSULTING ENGINEERS 1150 West Broadway, Vancouver 8, B.C. | | |
| Drawn: DRH | Date | Scale: 3/4" = 1'-0" |
| Chk. by: WLL | June 9 1961 | DWG. 599-25 |

GENERAL ARRANGEMENT APPROVED
CHIEF ENGINEER, DIST. OF HIGHWAYS