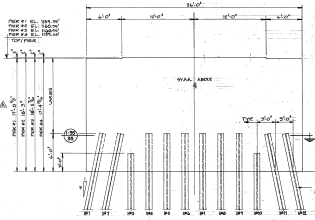
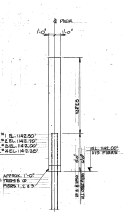


**BEARING PLAN**  
1/4" = 1'-0"

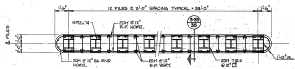
**SECTION**  
3/8" = 1'-0"



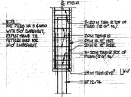
**SIDE ELEVATION (LOOKING WEST)**  
1/4" = 1'-0"



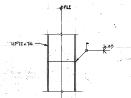
**END ELEVATION**  
1/4" = 1'-0"



**PILING PLAN SECTION**  
3/8" = 1'-0"



**SECTION**  
3/8" = 1'-0"



**TYPICAL PILE SPlice**  
N.T.S.

- NOTES**
1. PILE SPICES TO BE STAMPED SO THAT NOT MORE THAN ONE SPICE OCCURS AT THE SAME ELEVATION.
  2. CONTRACTOR MAY CUT OFF PILES AT HIGHER ELEVATION IF PROVED FOR CONSTRUCTION PURPOSES.
  3. ALL PILES IN REF. TO BE VERTICAL WITH 0° DEFLECT IN PIER.
- | ESTIMATED MATERIAL QUANTITIES PER PIER |        |
|--|--------|
| CONCRETE (CYLONS)                      | 230    |
| REINFORCING STEEL (LBS.)               | 39,000 |
| FORMWORK (SQ. FT.)                     | 4,000  |
| PILES (NO.)                            | 48     |
- REID, CROWTHER & PARTNERS LIMITED**  
 SUITE 200 - 288 W. SPRINGFIELD ST.  
 NORTH VANCOUVER, B.C. V7E 3M7



GOVERNMENT OF BRITISH COLUMBIA  
 MINISTRY OF TRANSPORTATION AND HIGHWAYS  
 BRIDGE ENGINEERING BRANCH

VERNON HIGHWAYS DISTRICT  
 MABEL LAKE ROAD  
 ENDERSBY BRIDGE  
 PIER DETAILS

|   |          |       |          |            |
|---|----------|-------|----------|------------|
| B | DATE     | NOTED | REV. NO. | 2734-13    |
|   | BY       | JES   | CHEKED   | JES        |
| A | AS BUILT | DATE  | NO.      | 311-95 (A) |
|   | BY       | JES   | DATE     |            |