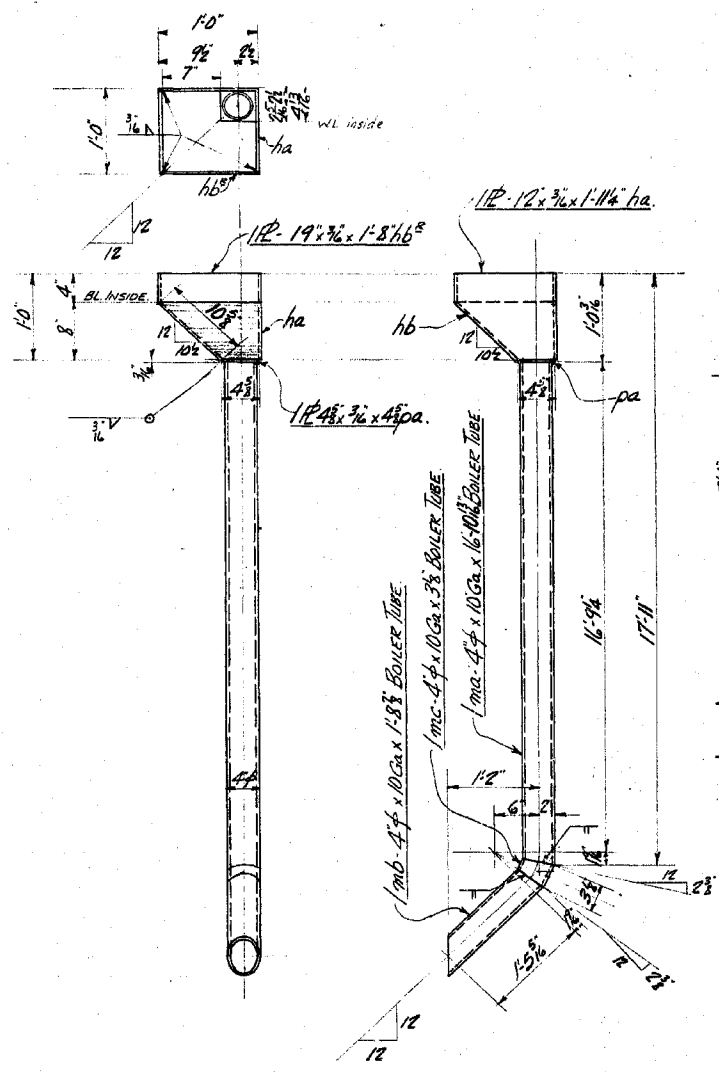


2 ROWS - STD. ARMCO BONDED METAL BLAST PLATE N° 8 Ga.  
 ARMCO DRAINAGE P.D. # 9523 C.

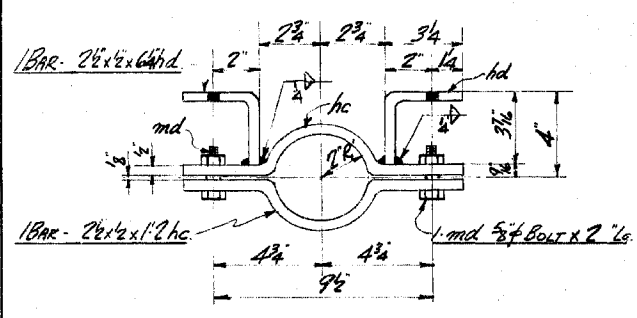
53142

REF. DWGS. DEPT. OF PUBLIC WORKS. 357-12, 16, 17, 18, 19, 20 & 587-7.

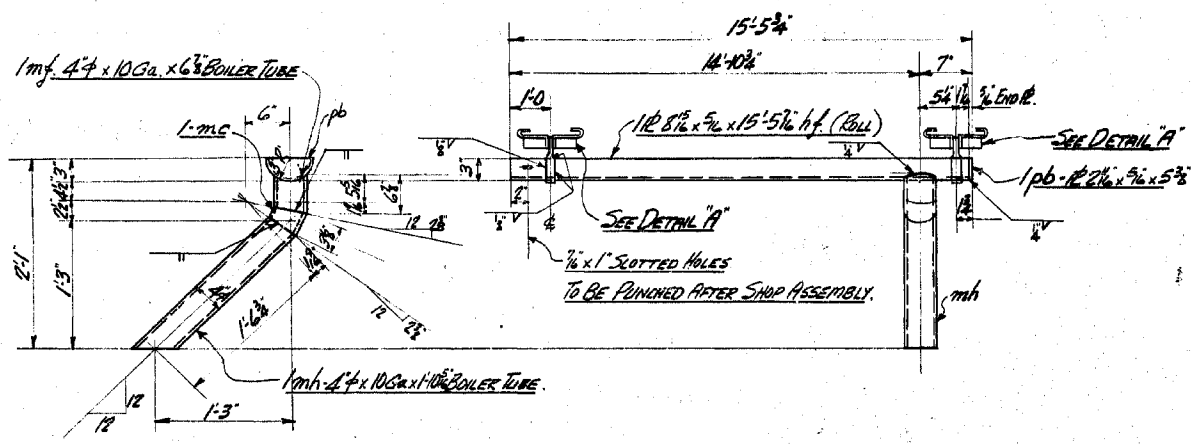
MATERIAL ON LOOSE BILL No.		SPECIFICATION A.S.H.O. 1969	
CONNECTIONS		DRAWN BY [Signature]	
OPEN HOLES 1/2" + DIMENSIONS NOTED		CHECKED BY [Signature]	
PAINT 1. SHOP COAT REG. LEAD		PURCHASER GOVT. OF PROVINCE OF B.C.	
REVISIONS		DEPT. OF PUBLIC WORKS	
		DESCRIPTION THREE VALLEY BRIDGE (PRIVILEGE DIST.)	
		3 SPAN RATE GIRDERS BRIDGE (20'7" x 100' x 7'8")	
		SCALE DETAIL BLAST PLATES	
		CONTRACT No. V.2957	
		DRAWING No. 8	



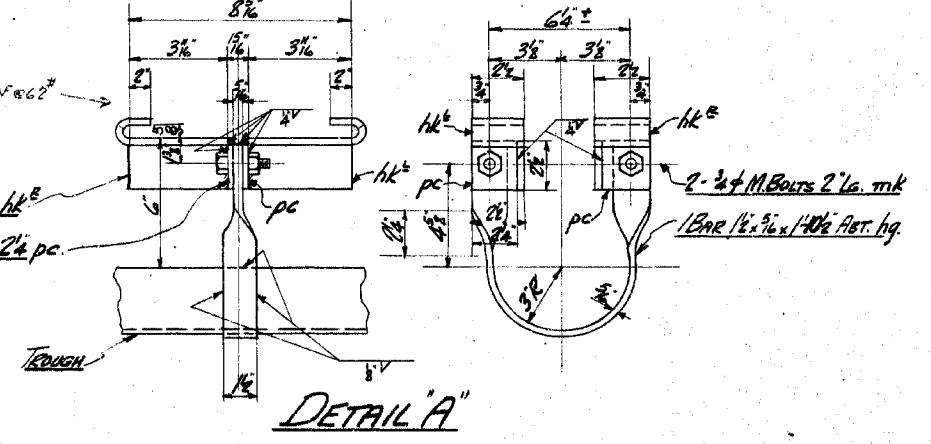
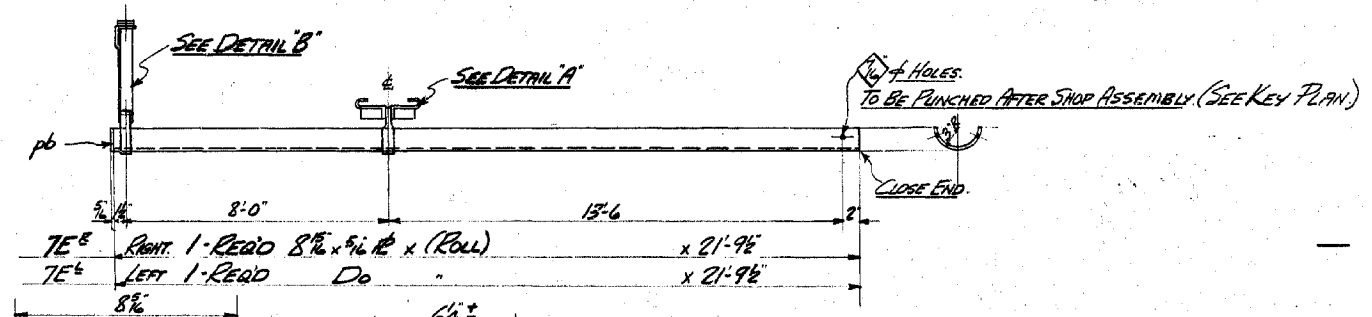
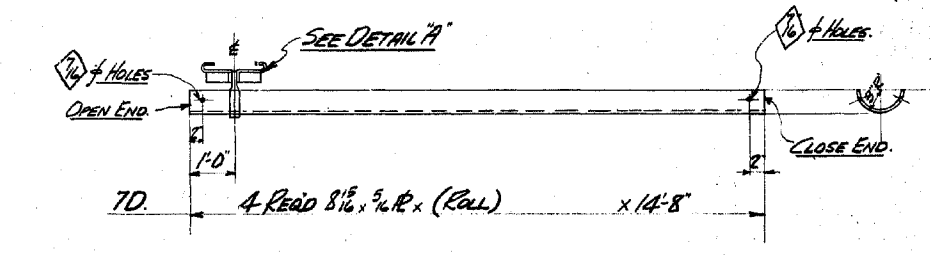
— 1 REQ'D 7A<sup>2</sup> (RIGHT) DOWN SPOUTS. —  
 — 1 " 7A<sup>2</sup> (LEFT) Do. —



— 6 REQ'D 7B - CLAMPS —

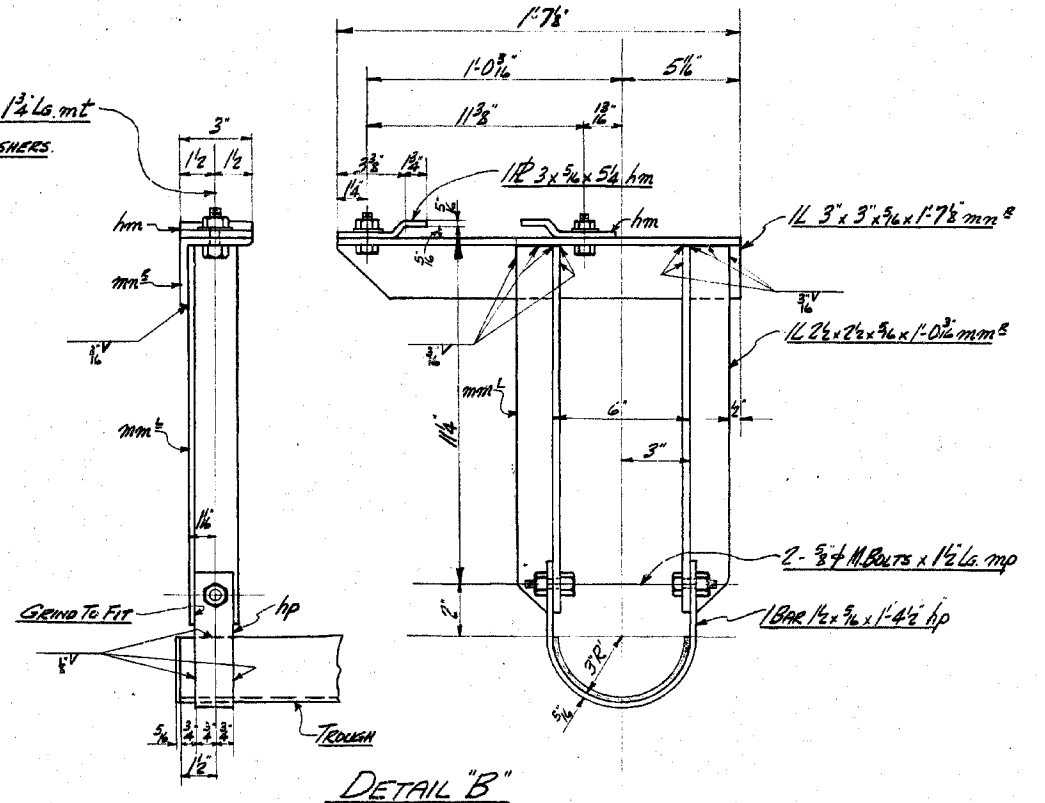


— 1 REQ'D 7C<sup>2</sup> (RIGHT) DOWN SPOUTS. —  
 — 1 REQ'D 7C<sup>2</sup> (LEFT) Do. —

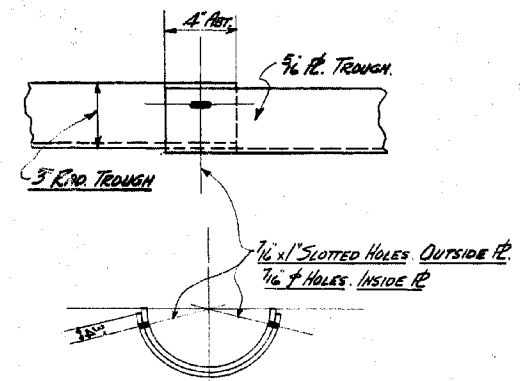


DETAIL 'A'

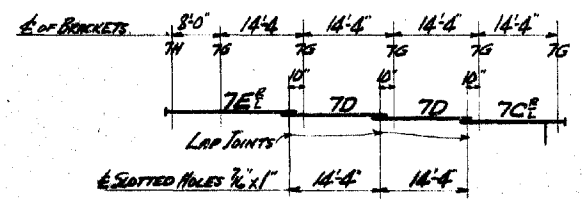
2 - 3/4\"/>
 2 - 3/4\"/>



DETAIL 'B'



— DETAILS OF LAP JOINTS —



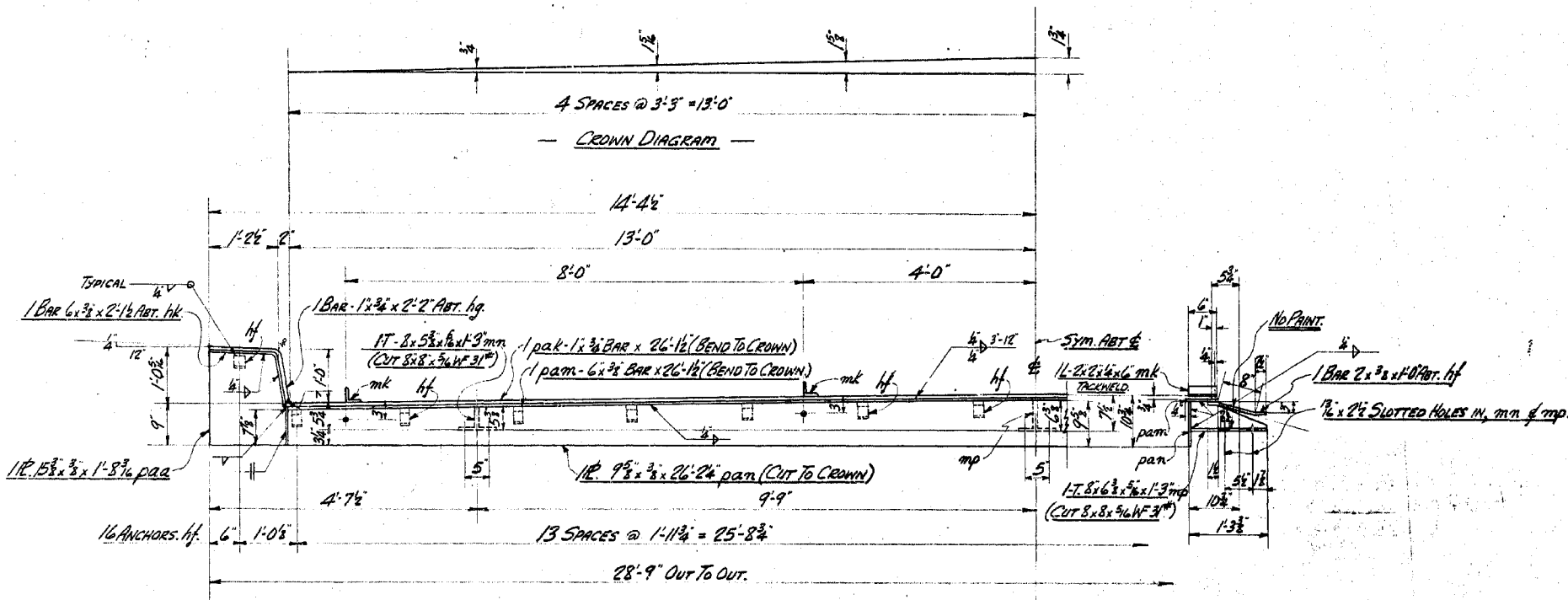
KEY PLAN.  
 SHOP ASSEMBLY OF DRAIN DIVERSIONS.

NOTE: - ALL MATERIAL TO BE GALVANIZED.

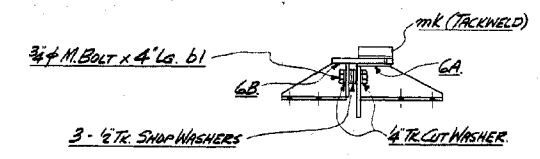
MATERIAL ON LOOSE BILL No. 76.  
 SPECIFICATION C.A.S.H.O. 1947.  
 CONNECTIONS AS NOTED.  
 OPEN HOLES GALVANIZE.  
 PAINT GALVANIZE.  
 REVISIONS

REF. DWGS. DEPT. OF PUBLIC WORKS. 357-12, 16, 17, 18, 19, 20 & 587-7.	
DOMINION BRIDGE COMPANY LIMITED - Vancouver, B. C. -	
DRAWN BY [Signature]	PROPRIETOR GOVT. OF PROVINCE OF B.C.
CHECKED BY [Signature]	PURCHASER DEPT. OF PUBLIC WORKS.
APPROVED [Signature]	DESCRIPTION THREE VALLEY BRIDGE (REVELSTOCK DIST.)
SCALE	5 SPAN PLATE GIRDER BRIDGE (P.O. 71-8, 100-4, 71-2)
	DETAIL DRAIN DIVERSIONS.
	CONTRACT No. V. 2957.
	DRAWING No. 7.

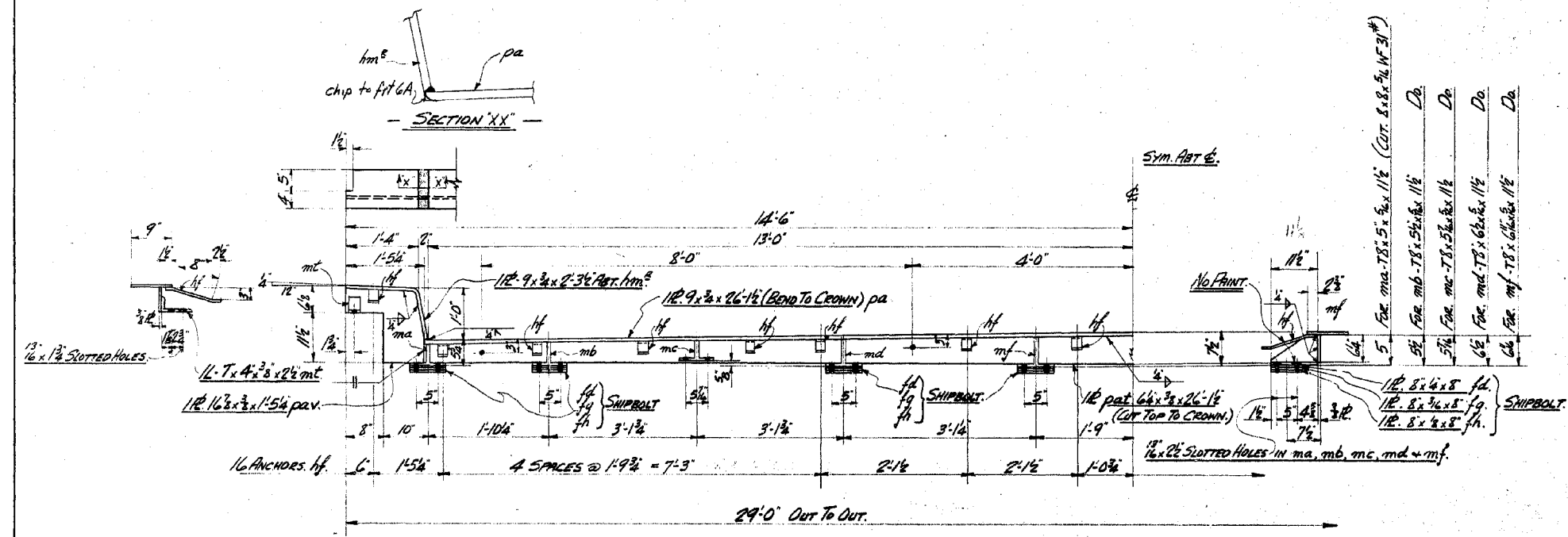
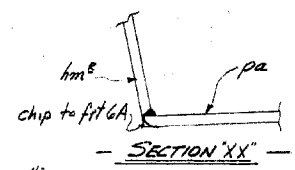
53143



2 REQD - 6A - PROTECTION ANGLES.



ASSEMBLY FOR SHIPMENT FOR 6A & 6B (AT 4 PLACES ON EACH EXP JOINT)



2 REQD - 6B - FLOOR PLATES

SPECIFICATIONS:- TRANS-CANADA HIGHWAY.  
 B.C. DEPT OF PUBLIC WORKS. A.R.S.H.D.  
 LOADING - H20-516.

53144

REF. DNGS. DEPT OF PUBLIC WORKS. 357-12, 16, 17, 18, 19, 20 & 587-7.

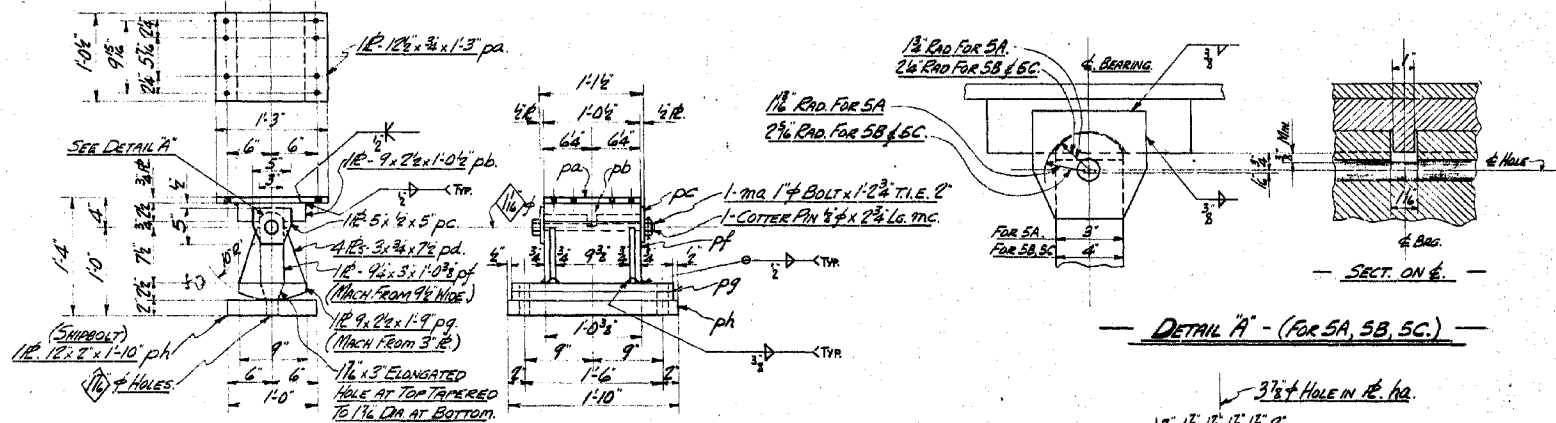
MATERIAL ON LOOSE BILL No. 6a.

SPECIFICATION A.R.S.H.D. 1949.

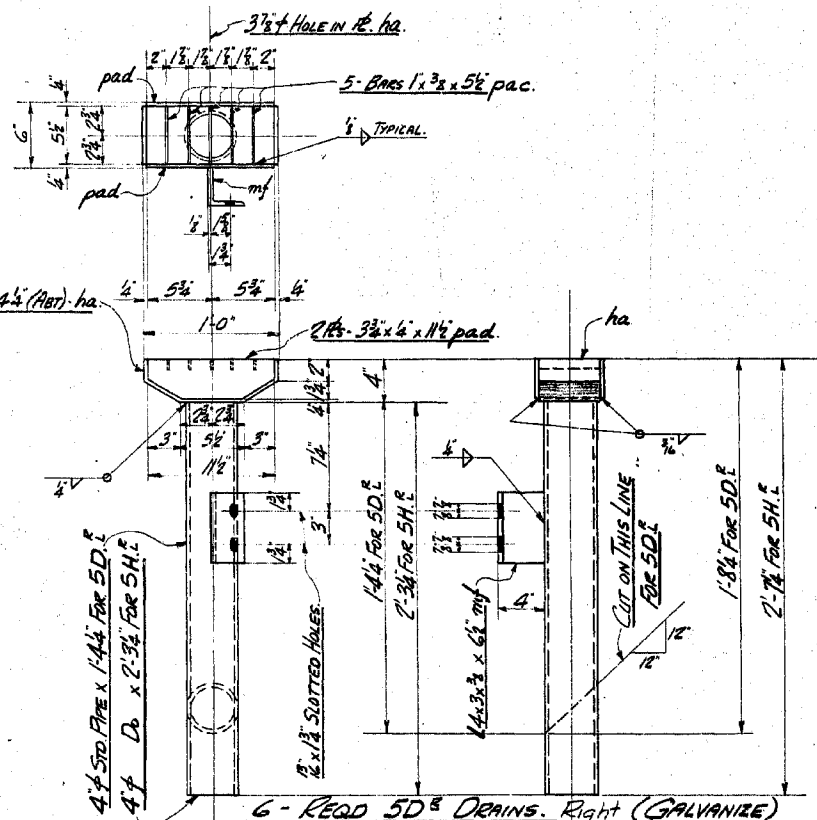
DRAWN BY [Signature]		PROPRIETOR GOVT. OF PROVINCE OF B.C.		CONTRACT No.
CHECKED BY [Signature]		PURCHASER DEPT. OF PUBLIC WORKS		V. 2957.
OPEN HOLES 7/8" UNLESS NOTED		DESCRIPTION THREE VALLEY BRIDGE (PEVELSTON DIST.)		DRAWING No.
PAINT 1-500 COAT RED LEAD AS NOTED		3-37MM PLATE GIRDER BRIDGE (707'S, 100'-4, 71'S)		6.
REVISIONS		SCALE		DETAIL EXPANSION JOINTS.

SCALE

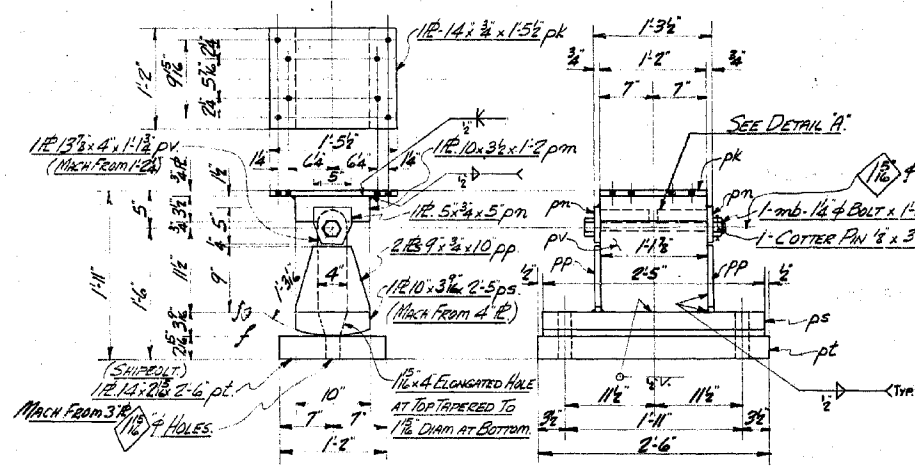
53144



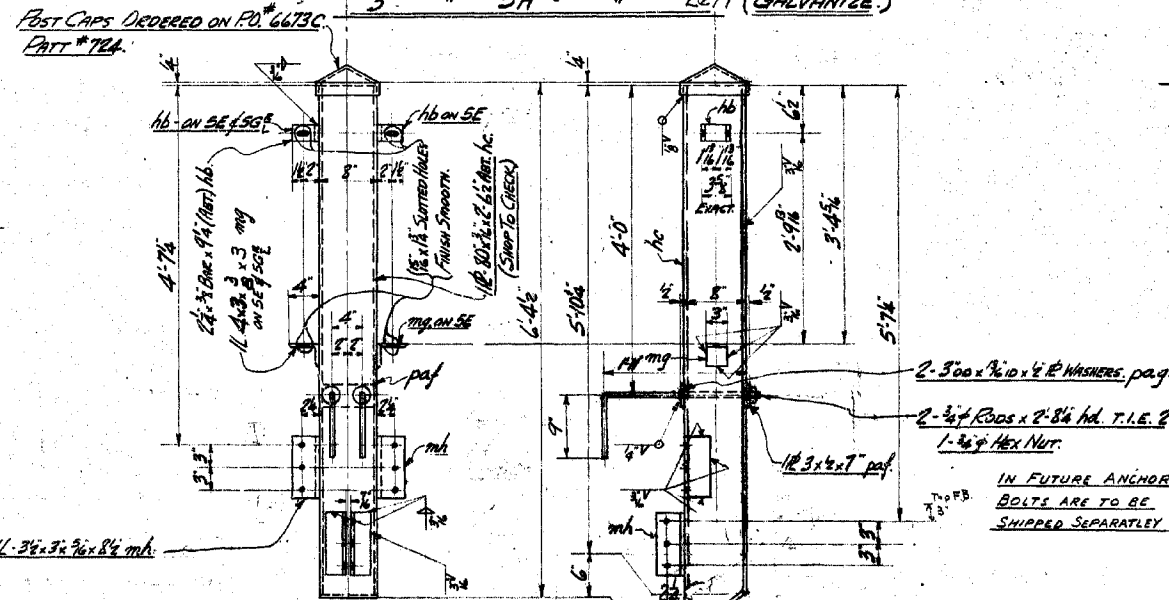
4-REQD 5A - ROCKER BEARING AT ABUTMENTS.



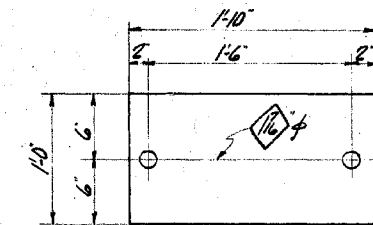
2-REQD 5B - EXPANSION BEARING AT PIER.



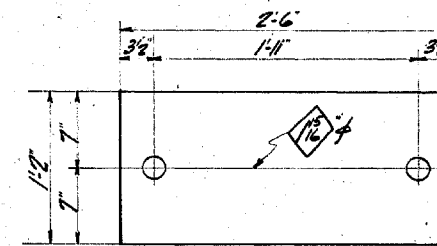
2 REQD 5C - FIXED BEARING AT PIER.



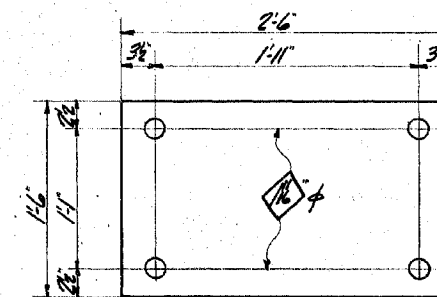
32- FENCE POSTS REQD 5E  
 2- Do 5E<sup>R</sup> (RIGHT)  
 2- Do 5E<sup>L</sup> (LEFT)



4 REQD 5K - 12x1/8 SHEET LEAD x 1'-10\"/>



2 REQD 5N - 14x1/8 SHEET LEAD x 2'-6\"/>



2 REQD 5P - 18x1/8 SHEET LEAD x 2'-6\"/>

NOTE: - BEARINGS TO BE WELDED & STRESS-RELIEVED BEFORE MACHINING.

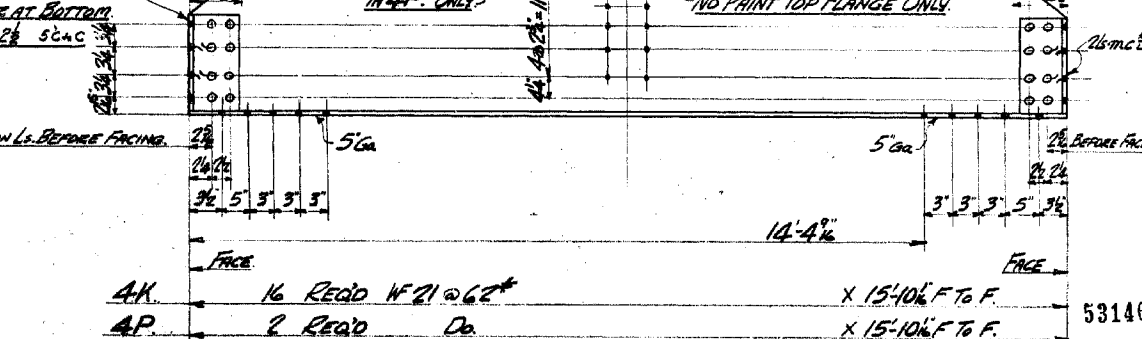
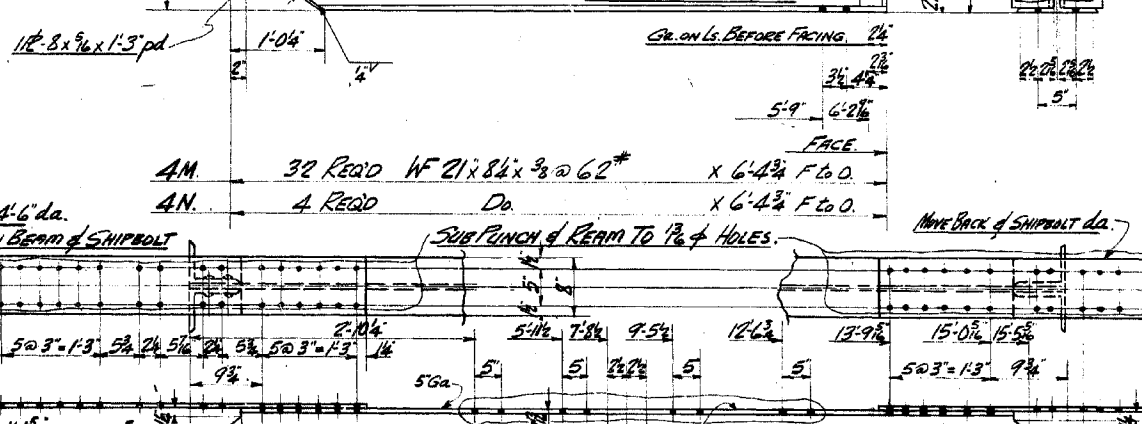
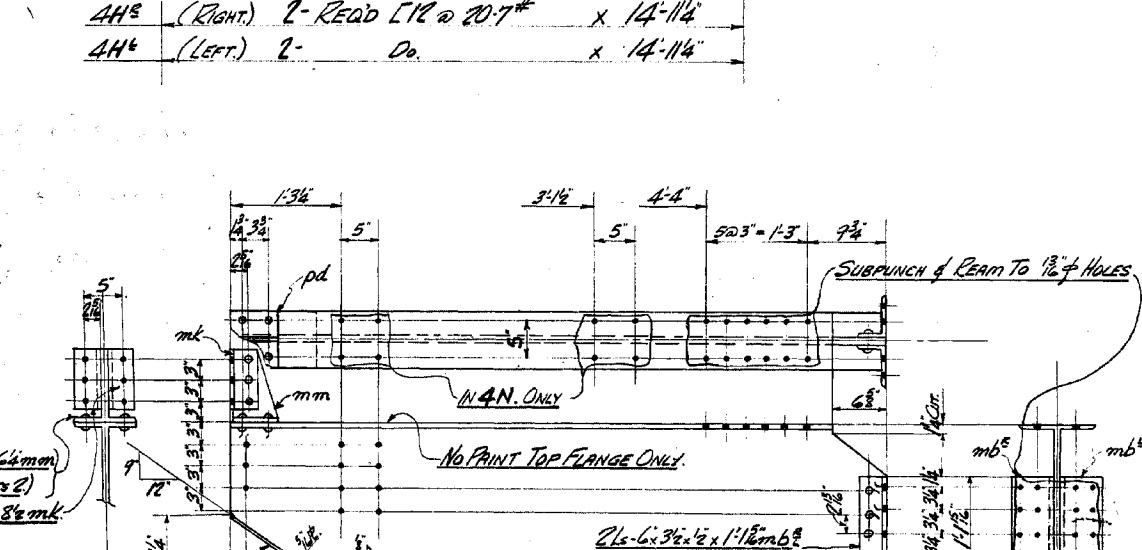
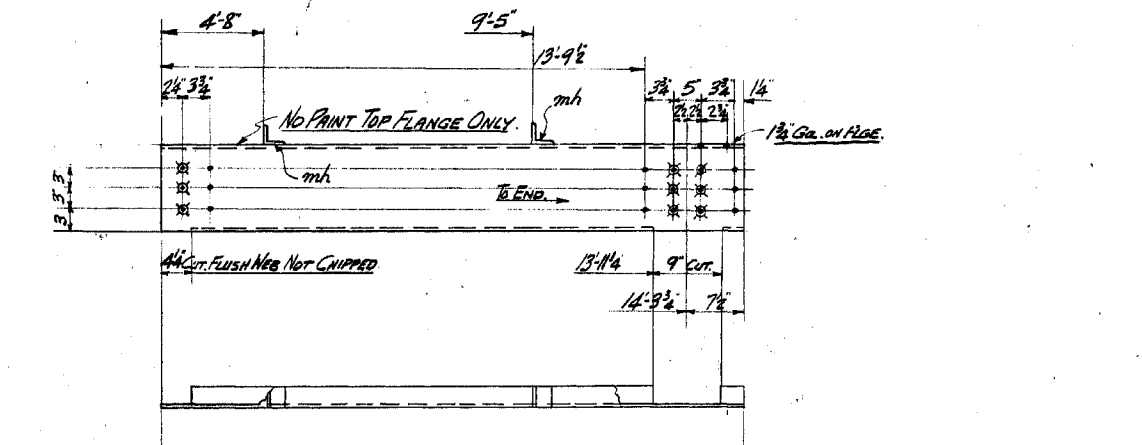
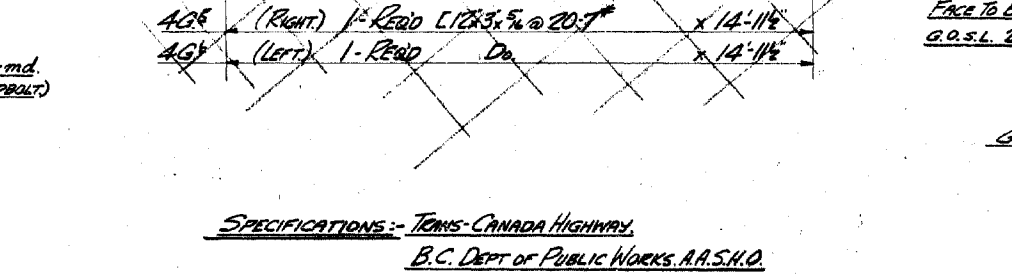
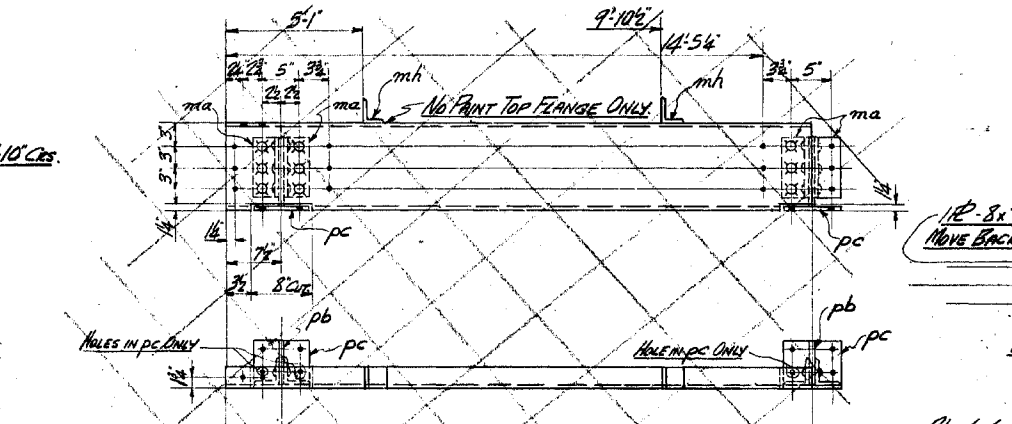
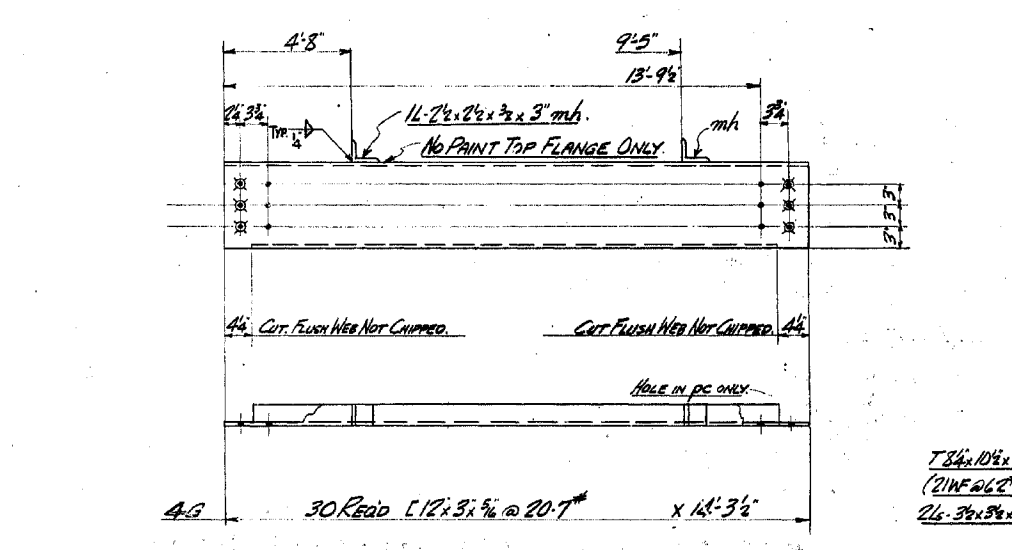
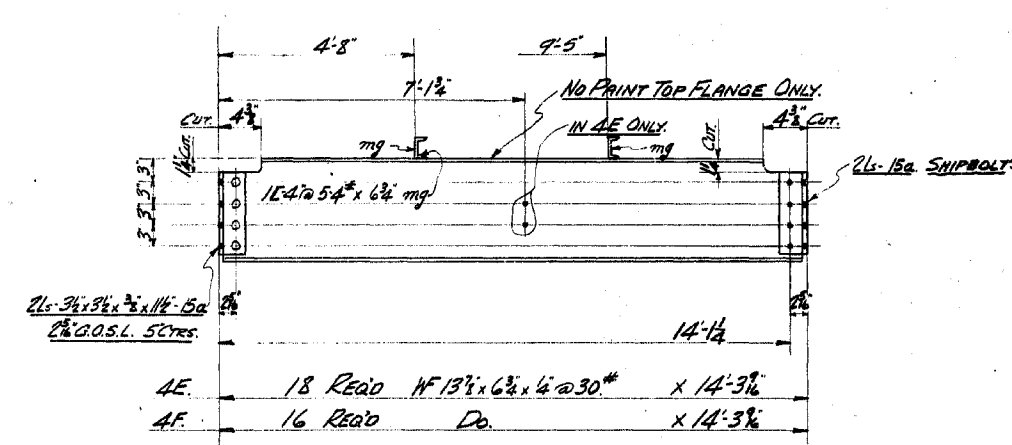
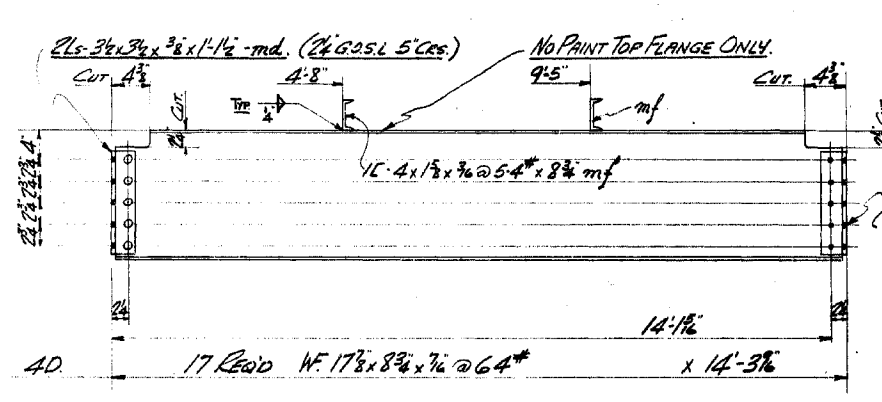
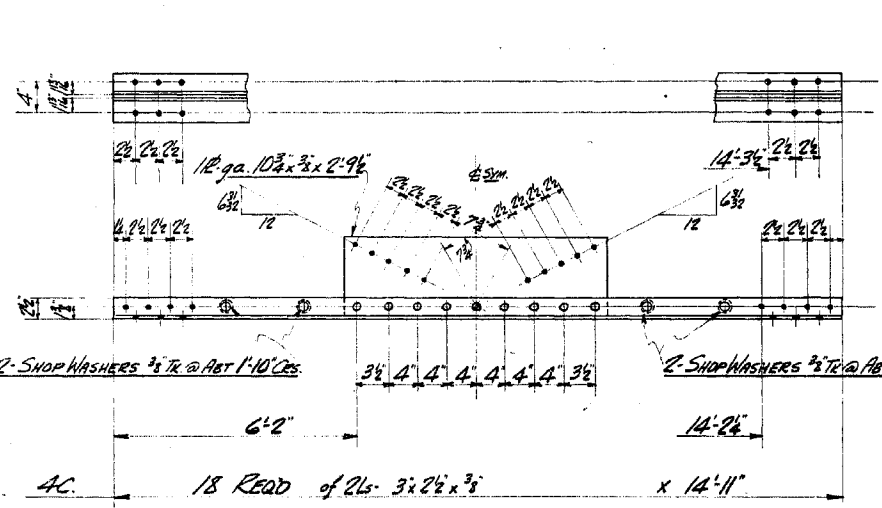
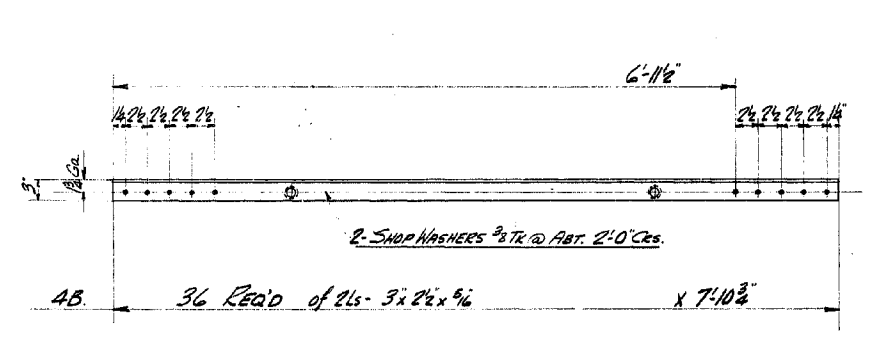
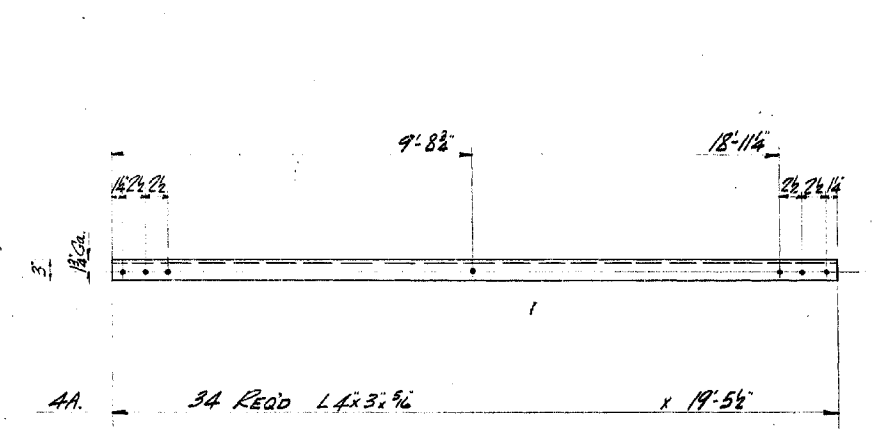
SPECIFICATIONS: - TRANS-CANADA HIGHWAY  
 B.C. DEPT OF PUBLIC WORKS. P.A.S.H.O.  
 LOADING - H20 - S16.

MATERIAL ON LOOSE BILL No. 52, 156  
 SPECIFICATION P.A.S.H.O. 1949  
 CONNECTIONS UNLESS NOTED  
 OPEN HOLES 1/8\"/>

Ref. DWGS. DEPT OF PUBLIC WORKS. 357-12, 16, 17, 18, 19, 20, & 587-7.

**DOMINION BRIDGE COMPANY LIMITED - Vancouver, B. C. -**

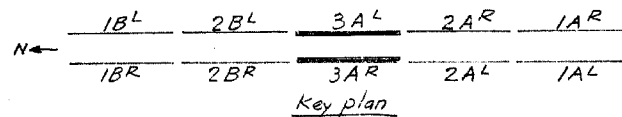
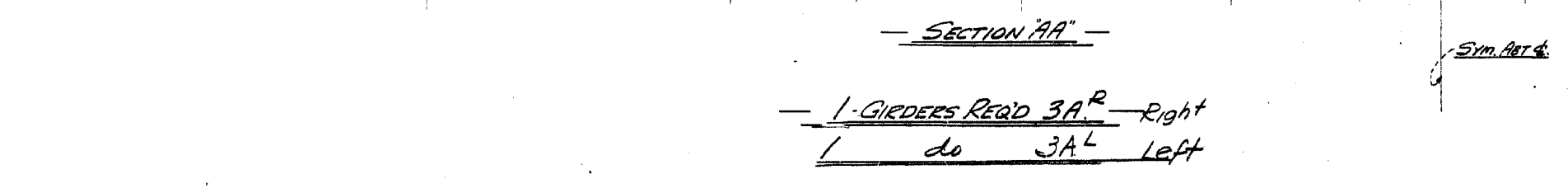
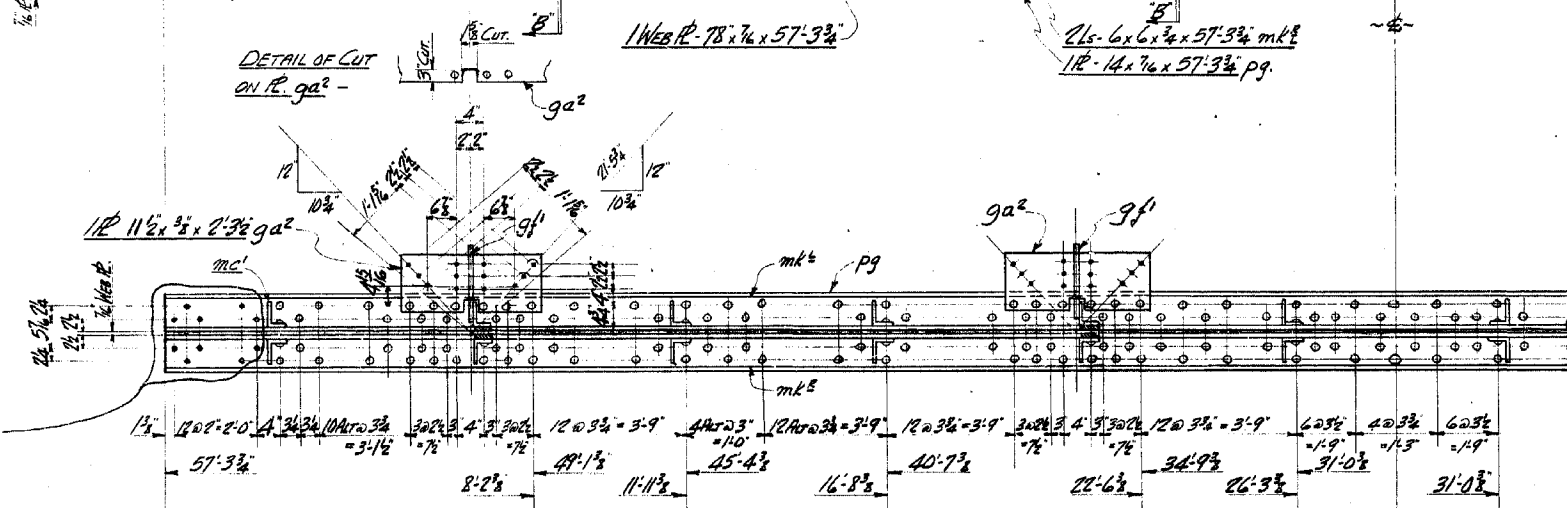
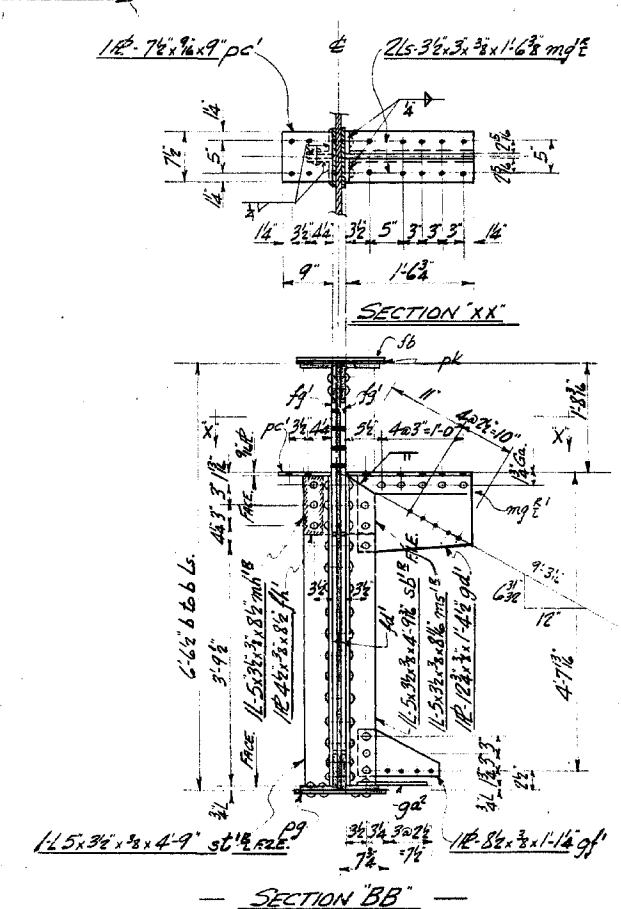
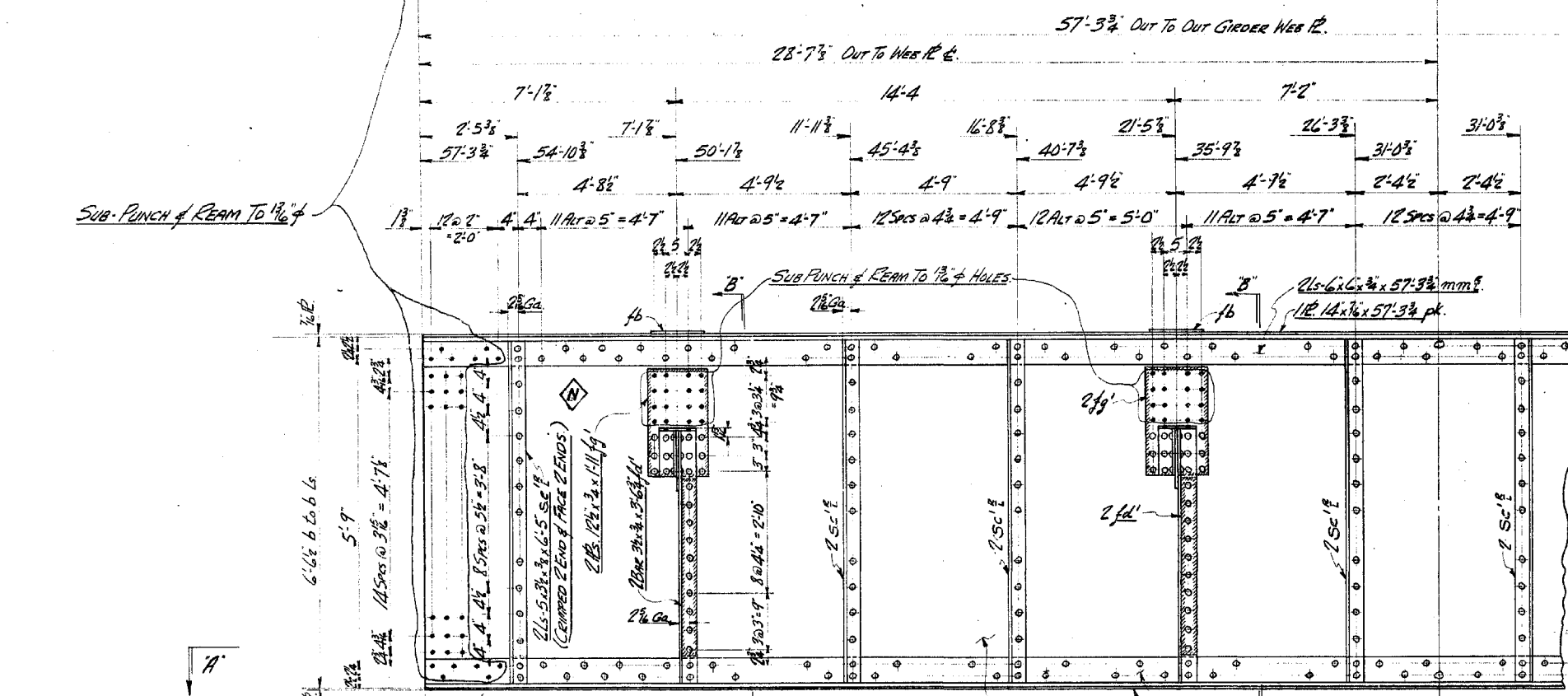
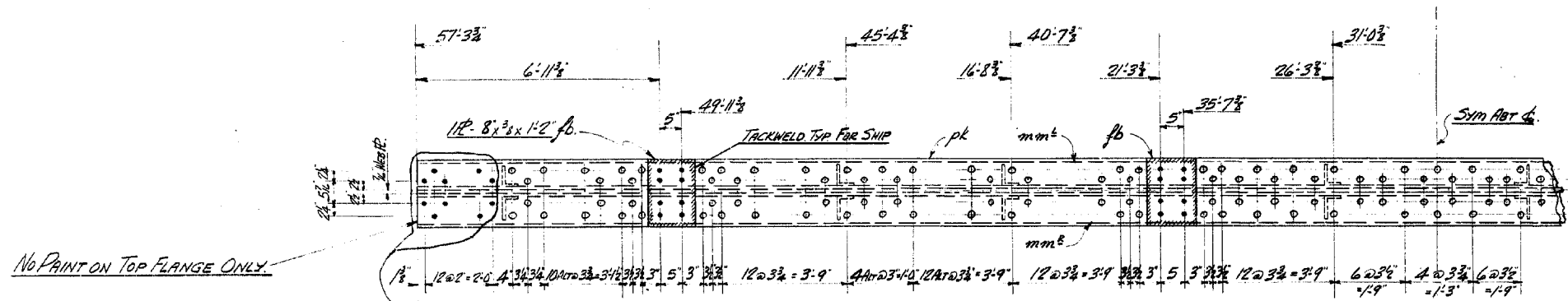
DRAWN BY: [Signature]	PROPRIETOR: GOVT OF PROVINCE OF B.C.	CONTRACT NO. V. 2957
CHECKED BY: [Signature]	PURCHASER: DEPT OF PUBLIC WORKS	DRAWING NO. 5
APPROVED: [Signature]	DESCRIPTION: THREE VALLEY BRIDGE (REVELSTOCK DIST.)	SCALE: DETAIL
REVISIONS:	3-SPAN PLATE GIRDER BRIDGE (20' x 18' 100' A & 7' B)	



**SPECIFICATIONS:-** TRANS-CANADA HIGHWAY  
 B.C. DEPT OF PUBLIC WORKS A.R.S.H.O.  
 LOADING - H20-516.

MATERIAL ON LOOSE BILL No. 4a & 4b		<b>DOMINION BRIDGE COMPANY LIMITED - Vancouver, B.C.</b>	
SPECIFICATION A.R.S.H.O. H&T	CONTRACT No. V.2957	DRAWN BY [Signature] PROPRIETOR GOVT. OF PROVINCE OF B.C.	
CONNECTIONS 3/8\"	CHECKED BY [Signature] PURCHASER DEPT. OF PUBLIC WORKS	APPROVED [Signature] DESCRIPTION THREE VALLEY BRIDGE (BEVERLYSTOCK DINT)	
OPEN HOLES UNLESS NOTED	PAINT 1. SHOP COAT AND LEAD AS NOTED	2500 PLATE GIRDER BRIDGE (KOTI 9, 100-2, 11'X)	
REVISIONS	SCALE	DETAIL BEARING STRONGERS, FLOOR BEAMS	

53146



1-GIRDERS REQD 3A<sup>R</sup> Right  
1 do 3A<sup>L</sup> Left

SPECIFICATIONS:- TRANS-CANADA HIGHWAY.  
B.C. DEPT OF PUBLIC WORKS. A.A.S.H.O.  
LOADING-H20-S16.

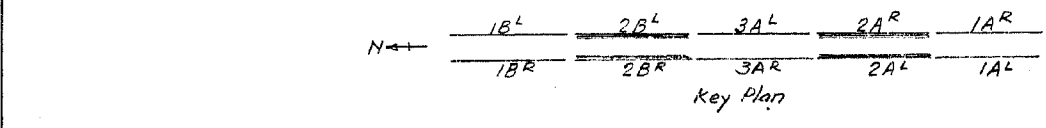
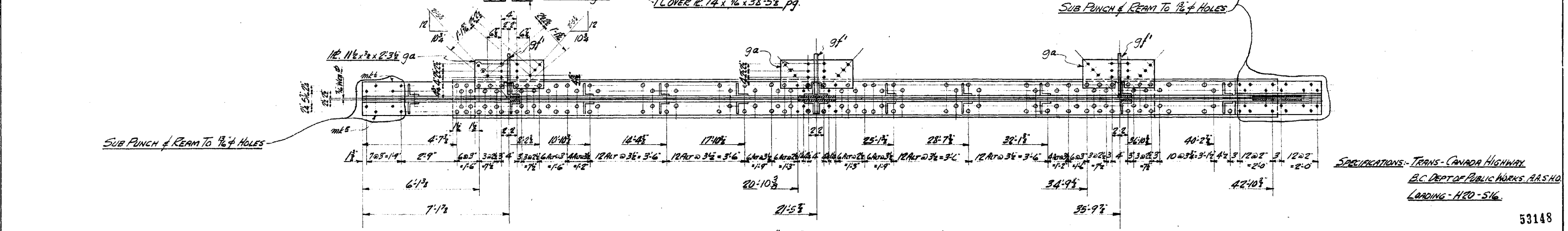
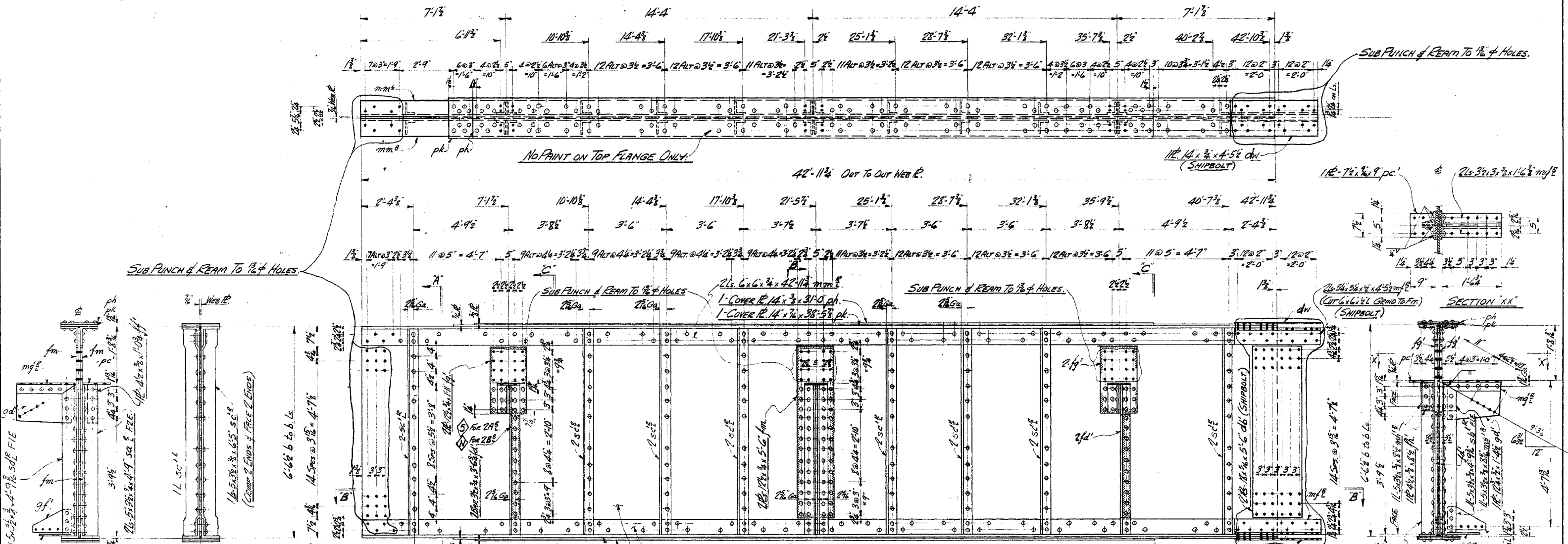
MATERIAL ON LOOSE BILL No. 3a.  
SPECIFICATION A.R.S.H.O. 1949.  
CONNECTIONS 3/4" GUNTS.  
OPEN HOLES UNLESS NOTED.  
PAINT 1. SHOP COAT RED LEAD. EXCEPT NOTED.  
REVISIONS

REF. DINGS DEPT OF PUBLIC WORKS. 357-12, 16, 17, 18, 19, 20 & 587-7.

**DOMINION BRIDGE COMPANY LIMITED - Vancouver, B. C.**

DRAWN BY	PROPRIETOR	GOVT OF BRITISH COLUMBIA	CONTRACT NO.
CHECKED BY	PURCHASER	DEPT OF PUBLIC WORKS	V.2957
APPROVED	DESCRIPTION	THREE VALLEY BRIDGE (SPELSTAKE DIST)	DRAWING NO.
		35MM PLATE GIRDER BRIDGE (207'x100'-4" x 71'-8")	3
SCALE	DETAIL	GIRDERS. 3A.	

53147



- 1 GIRDER REQ'D 2A<sup>R</sup> - RIGHT
  - 1 Do 2B<sup>R</sup> - Do
  - 1 Do 2A<sup>L</sup> - LEFT
  - 1 Do 2B<sup>L</sup> - Do
- PLATE EXCEPT FOR REMAINING
- PLATE EXCEPT FOR REMAINING

MATERIAL ON LOOSE BILL No. 2a  
 SPECIFICATION A.A.S.H.O. 1949  
 CONNECTIONS 3/4\"/>

REF. DWGS. - DEPT OF PUBLIC WORKS. 357-12, 16, 17, 18, 19, 20 & 587-7.

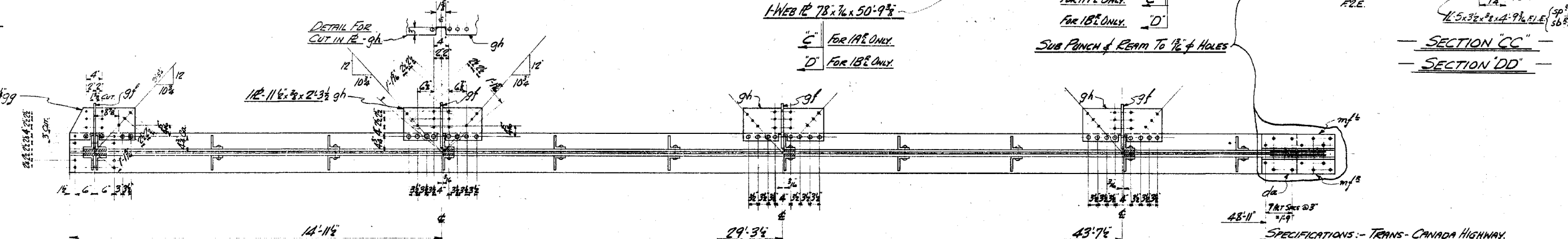
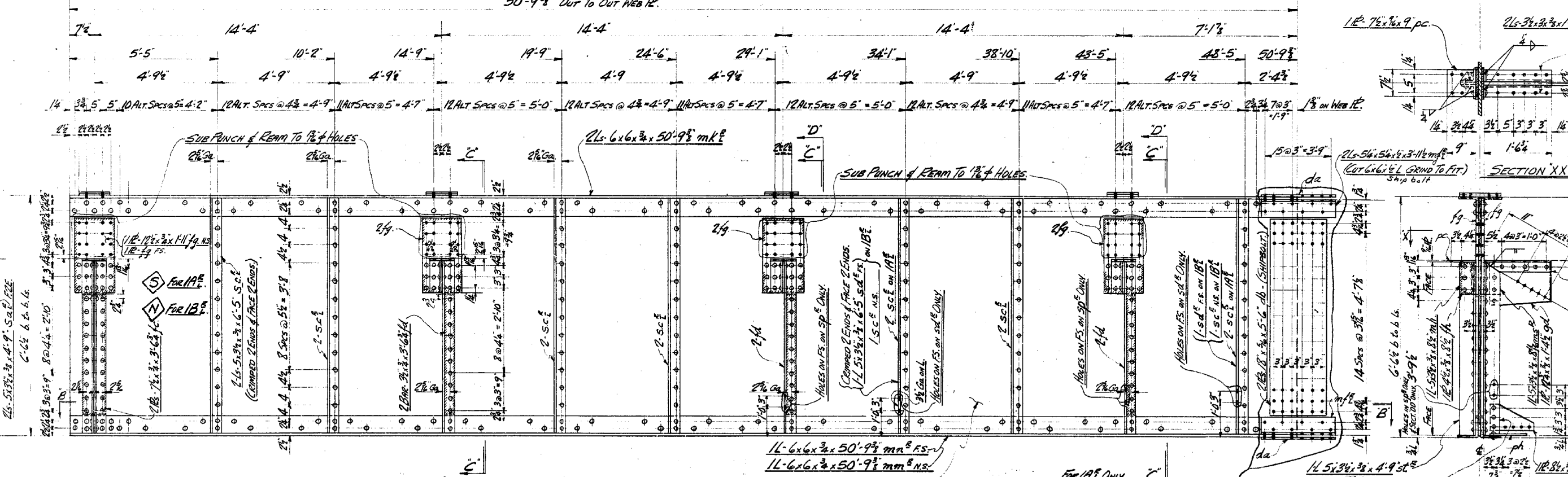
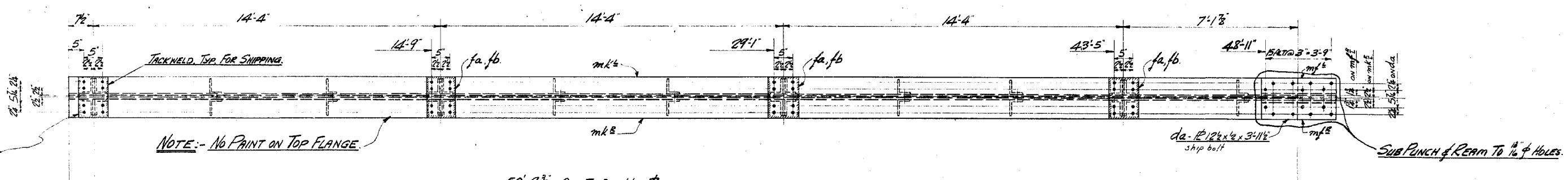
**DOMINION BRIDGE COMPANY LIMITED - Vancouver, B. C.**

DRAWN BY	PROPRIETOR	GOVT. OF BRITISH COLUMBIA	CONTRACT NO.
CHECKED BY	PURCHASER	DEPT. OF PUBLIC WORKS	V. 2957
APPROVED	DESCRIPTION	THREE VALLEY BRIDGE (EVELYSTONE DIST.)	DRAWING NO.
REVISIONS	DETAIL	GIRDERS 2A <sup>R</sup> - 2A <sup>L</sup> & 2B <sup>R</sup> - 2B <sup>L</sup>	7

SCALE

1910 PRINTED IN CANADA

53148



1-GIRDER REQ'D 1A<sup>B</sup> (RIGHT)  
 1- Do. 1A<sup>L</sup> (LEFT)  
 1- Do. 1B<sup>B</sup> (RIGHT)  
 1- Do. 1B<sup>L</sup> (LEFT)

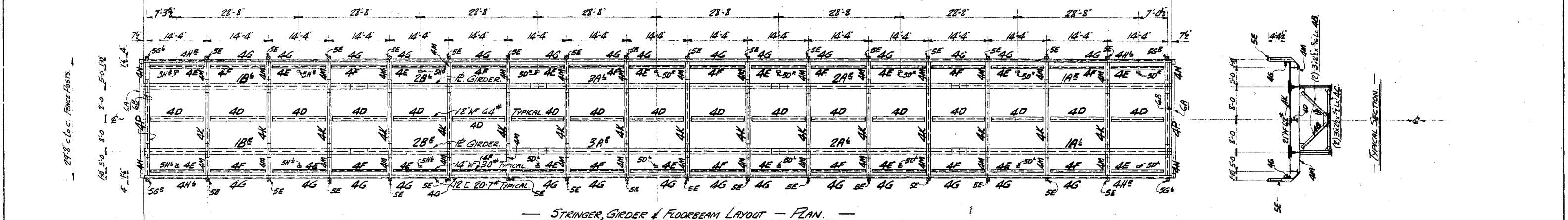
MATERIAL ON LOOSE BILL No. 1a.  
 SPECIFICATION A.S.H.O. 1949.  
 CONNECTIONS 3/4" PIVETS  
 OPEN HOLES EXCEPT NOTED.  
 PAINT 1" SHOP COAT RED LEAD. EXCEPT NOTED.  
 REVISIONS

**DOMINION BRIDGE COMPANY LIMITED - Vancouver, B. C.**  
 DRAWN BY [Signature] PROPRIETOR GOVT. OF BRITISH COLUMBIA.  
 CHECKED BY [Signature] PURCHASER DEPT. OF PUBLIC WORKS.  
 APPROVED [Signature] DESCRIPTION THREE VALLEY BRIDGE (REVELSTOCK DIST.)  
 3 SPAN PLATE GIRDER BRIDGE (TOTAL 100'4" x 71'-8")  
 SCALE DETAIL GIRDERS 1A<sup>B</sup> & 1A<sup>L</sup> & 1B<sup>B</sup> & 1B<sup>L</sup>

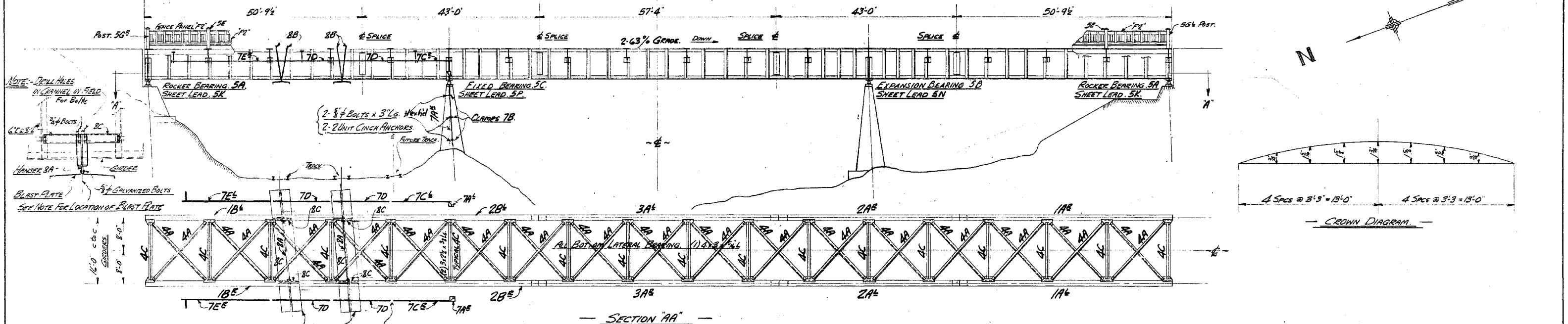
REF. DWGS - DEPT. OF PUBLIC WORKS 357-12, 16, 17, 18, 19, 20 & 587-7.  
 CONTRACT NO. V. 2957.  
 DRAWING NO. 1.  
 SPECIFICATIONS: - TRANS-CANADA HIGHWAY.  
 B.C. DEPT. OF PUBLIC WORKS. A.A.S.H.O.  
 LOADING - H20-S16.



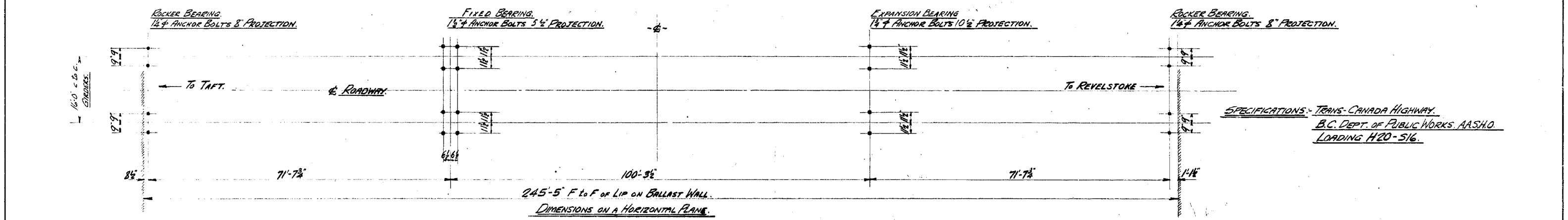
244'-11" Out To Out.



STRINGER GIRDER & FLOORBEAM LAYOUT - PLAN.



SECTION "AA"



ANCHOR BOLT SETTING

NOTE:- ALL ANCHOR BOLTS SUPPLIED BY OTHERS.

SPECIFICATIONS:- TRANS-CANADA HIGHWAY.  
B.C. DEPT. OF PUBLIC WORKS. A.A.S.H.O.  
LOADING H20-516.

MATERIAL ON LOOSE BILL No. SPECIFICATION A.A.S.H.O. M49.  
FIELD CONNECTIONS 3/4" RIVETS.  
OPEN HOLES PAINT 1- SHAD-COAT RED LEAD.  
REVISIONS

REF. DWGS:- DEPT OF PUBLIC WORKS. 357-1216, 17, 18, 19, 20 & 587-7. -

**DOMINION BRIDGE COMPANY LIMITED - Vancouver, B. C.**

DRAWN BY	PROPRIETOR GOVT OF PROVINCE OF B.C.	CONTRACT No.
CHECKED	PURCHASER DEPT. OF PUBLIC WORKS.	V 2957.
APPROVED	DESCRIPTION THREE VALLEY BRIDGE, REVELSTOCK DIST.	DRAWING No.
SCALE	3 SPAN PLATE GIRDER BRIDGE (80'11" x 100'4" x 71'8")	E1.
	DETAIL ERECTION PLAN.	