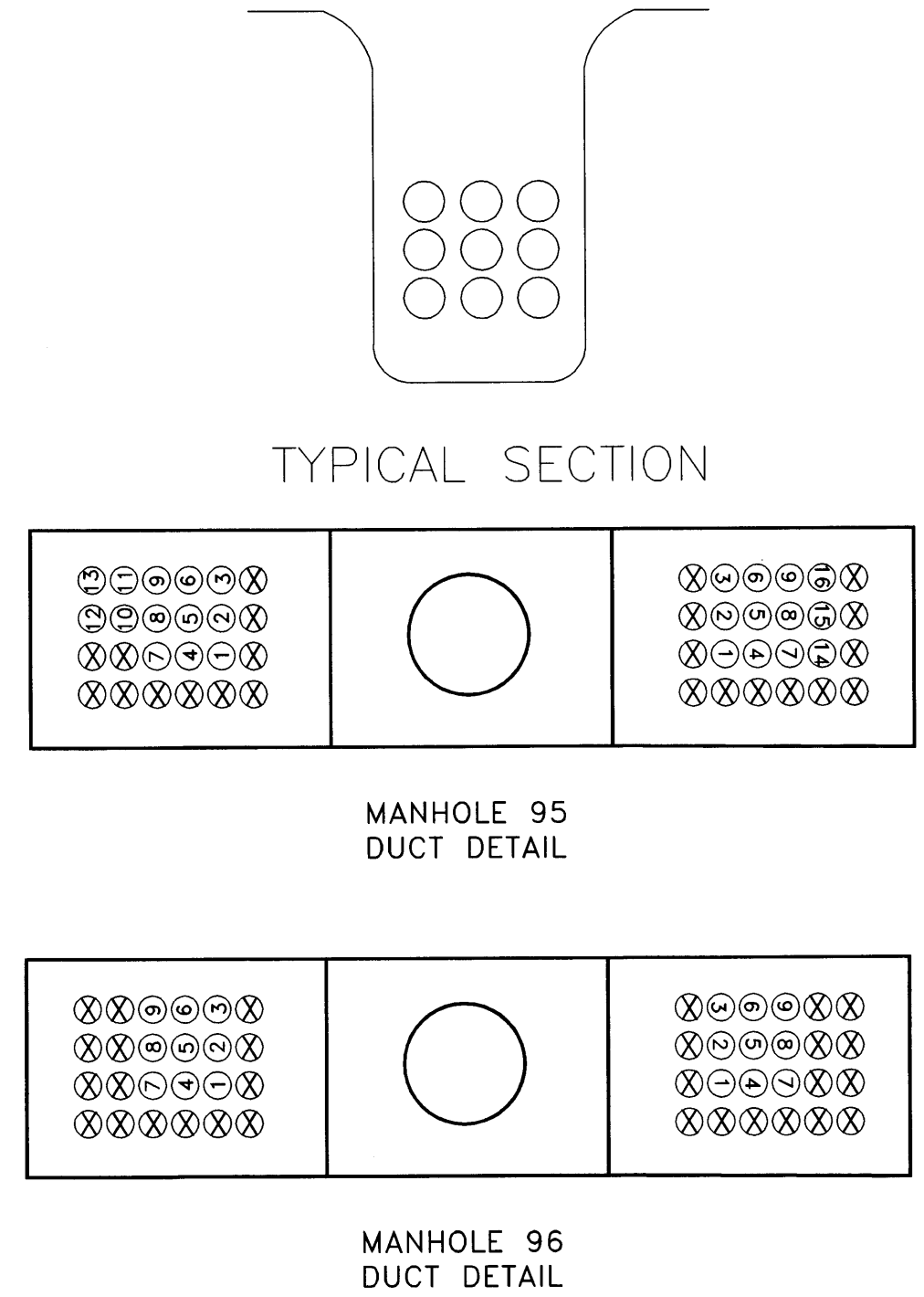
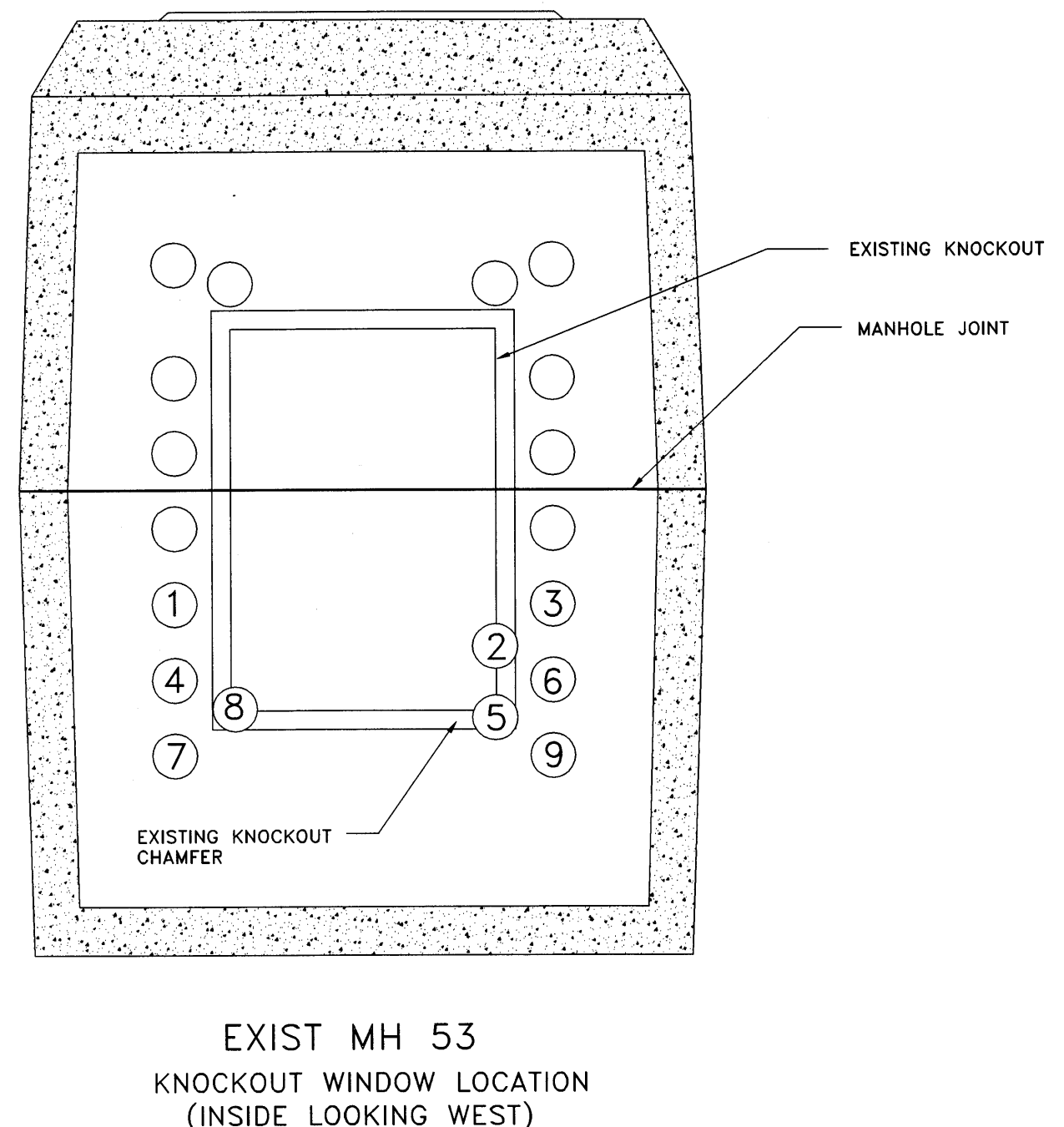
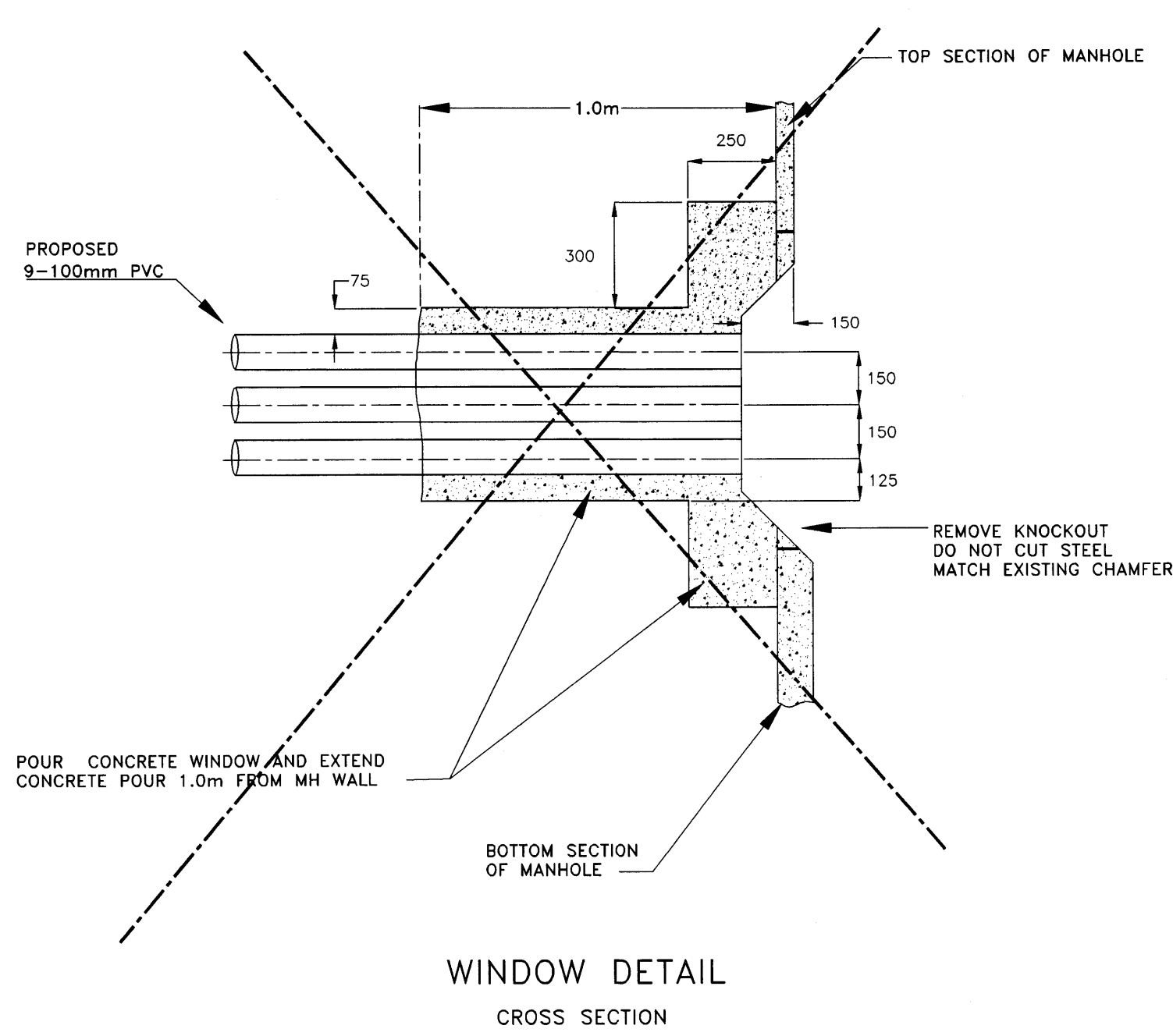


- CONSTRUCTION NOTES :**
- ELEVATIONS REFER N GEODETIC
 - CONDUIT GRADE ON PROFILE IS APPROXIMATE ONLY. FINISHED GRADE WILL BE SUBJECT TO LOCATION OF EXISTING UNDERGROUND UTILITIES.
 - MINIMUM COVER CONDUIT 0.75m ALL SECTIONS EXCEPT WHERE OTHERWISE NOTED
MANHOLE ROOF 0.60m
 - ALL DUCTS TO BE 100mm P.V.C. UNLESS OTHERWISE NOTED
 - ALL MANUFACTURED BENDS TO BE 4.3 m RADIUS UNLESS OTHERWISE NOTED
 - ALL CONCRETE PILASTERS TO BE 300 mm ABOVE GRADE UNLESS OTHERWISE NOTED.
 - CONTRACTOR IS TO PROVE THE LOCATIONS OF ALL EXISTING UNDERGROUND UTILITIES AND SERVICES AFFECTED BY CONSTRUCTION, BY M-SCOPE OR HAND EXCAVATION.
 - CONTRACTOR TO USE CAUTION WHEN EXCAVATING NEAR, OR BREAKING INTO B.C. TELEPHONE UNDERGROUND INSTALLATIONS. DAMAGE TO COMMUNICATIONS CABLES MUST BE AVOIDED.
 - FOR CABLE TROUBLE OR REPAIR INFORMATION CONTACT BC ONE CALL AT 1-800-474-6886
 - TEMPORARY RESTORATION IN ALL PAVED/SIDEWALK AREAS TO BE DONE IN ACCORDANCE WITH ALL APPROVING AUTHORITIES SPECIFICATIONS AND APPROVAL.
 - PERMANENT SIDEWALK AND CURB REPAIRS TO BE DONE BY CONTRACTOR
PERMANENT ROAD REPAIRS TO BE DONE BY CONTRACTOR
 - PERMANENT BOULEVARD RESTORATION BY CONTRACTOR
 - ALL LANDSCAPE RESTORATION IN LAWN BOULEVARDS MUST BE DONE BY USING SUITABLE GRASS SOD
 - CONTRACTOR TO CONTACT THE APPROPRIATE B.C. GAS INC. RECORDS DEPARTMENT 48hrs PRIOR TO START WORK.
 - CONTRACTOR TO CONTACT THE CITY/MUNICIPAL WORKS INSPECTOR 48hrs PRIOR TO STARTING WORK
 - ALL BACKFILL MATERIAL AND COMPACTION TO BE IN ACCORDANCE WITH THE APPROVING AUTHORITIES SPECIFICATIONS.
 - IN ALL PRECAST MANHOLES, THE WINDOW KNOCK-OUTS FOR CENTRE ENTRY MUST BE SAW CUT. ALL VERTICAL BARS ARE TO BE LEFT INTACT DURING SAW CUTTING, THEN CUT IN THE MIDDLE, BENT OUT OF MANHOLE AND USED AS REINFORCEMENT IN THE DUCTBANK. NO IMPACT TOOLS TO BE USED IN THIS AREA.
 - BREAK OUT EXISTING CONCRETE ENCASED DUCTS: ANY JACK-HAMMERING OR USE OF POWER TOOLS TO BE CARRIED OUT BY CONTRACTOR. ALL HAND WORK ASSOCIATED WITH THE REMOVING OF CONCRETE, STRIPPING OF DUCTS, BREAKING OF DUCTS AND/OR HANDLING OF CABLES TO BE DONE BY B.C. TEL FORCES
 - EXISTING CONDUIT TO BE RELOCATED IF REQUIRED TO ENSURE SPECIFIED ENTRANCE LOCATIONS INTO MANHOLE/VAULT CONTRACTOR TO PROVIDE EXCAVATION, BACKFILLING AND RESTORATION IF RELOCATION BECOMES NECESSARY.
 - ORANGE MARKER TAPE TO BE PLACED IN TRENCH LINE, 300-400mm BELOW FINAL GRADE.
 - SUBGRADE & DIRECT BURIED MATERIAL WHERE APPLICABLE SHALL BE 20mm MINUS CRUSHED AGGREGATE.
 - BACKFILL MATERIAL SHALL BE
 IN ROADWAYS/TRAVELLED AREAS 20mm MINUS C.A.
 IN SIDEWALK/TRAVELLED AREAS 20mm MINUS C.A.
 IN BOULEVARD/UNTRAVELLED AREAS NATIVE FILL
 - ALL CONCRETE SIDEWALKS AND DRIVEWAYS SHALL BE SAWCUT WITH THE EXCEPTION OF COLD JOINTS.
 - INDICATES CONTRACT ITEM NUMBER
 - CONTRACTOR TO PULL IN A BC TEL SUPPLIED DUCT MEASURING TAPE THRU ONE DUCT IN EACH RUN AFTER MANDRELING. LOCATION TO BE DETERMINED BY BC TEL.

ASSOCIATED DRAWINGS

SA-100083 PRECAST M.H. PLMH 3152
O.D. 3.46m X 1.75m X 2.2HR
SA-100004 SUMP C/W BACKWATER VALVE

CONCRETE ENCASED (TYP) DIRECT BURIED (TYP) (STRAPPED)



DIMENSIONS 100mm P.V.C. DUCTS	NO. OF DUCTS	DIRECT BURIED (mm)	CONC ENCASED (mm)	DIRECT BURIED STRAPPED
10	10	1520	1395	1050
9	9	1365	1265	945
8	8	1210	1130	840
7	7	1050	1000	735
6	6	895	870	630
5	5	735	735	525
4	4	580	605	420
3	3	420	470	315
2	2	265	340	215
1	1	210	105	

- UTILITY LEGEND**
- UTILITY POLE
 - PROPOSED B.C.TEL
 - EXISTING B.C.TEL
 - OIL LINE
 - B.C.H. & P.A.
 - SANITARY SEWER
 - DRAINAGE SEWER
 - WATER
 - GAS
 - SL - STREET LIGHTING
 - FA - FIRE ALARM
 - SH - STEAM HEATING
 - C - CULVERT
 - CONCRETE ENCASED
 - TV - CATV COMPANY

APP'D: O	DR. LW	APPROVED
DESIGN. H ISOMAA	CH. O	DATE:
W.O. 709531	DATE: 24/11/95	APPROVED
FIELD BOOK O	SCALE: AS SHOWN	DATE:
CONTRACT: O		

AS CONSTRUCTED
13/02/96 LW

ISSUE 2 HI

AS CONSTRUCTED CHAINAGES

- MH 53 - MH 96 158.4m C-C
- MH 96 - MH 95 162.2m C-C
- MH 95 - LAT #1 52.5m C-P
- MH 95 - MH 92 139.9m C-C

PROPRIETARY INFORMATION

This document and the data disclosed herein are accepted by the user on the condition that they are not to be reproduced, used or disclosed to any third party in whole or in part without the written permission of the General Outside Plant Engineering & Construction Manager of British Columbia Telephone Company.

ISSUE

AS CONSTRUCTED DATE: O
MICROFILMED DATE:
ASSOCIATED DRAWINGS

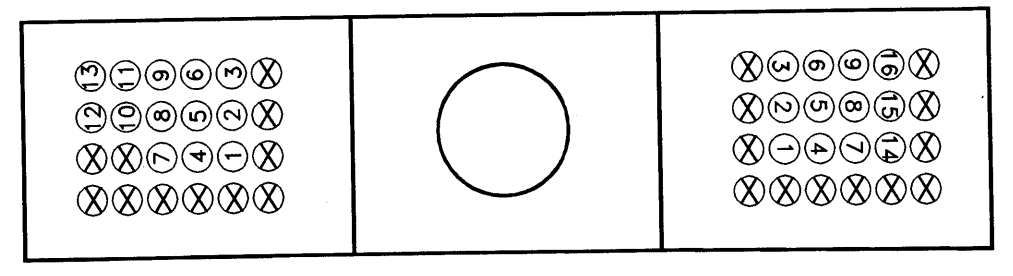
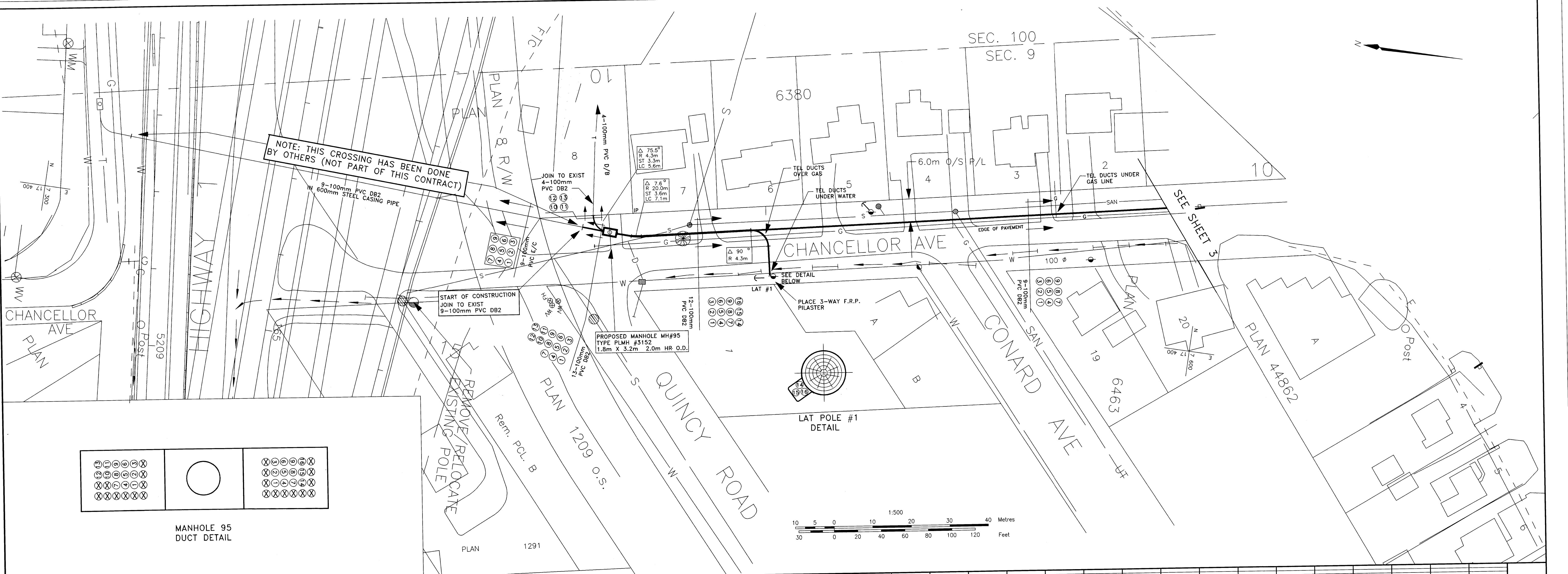
HU1-24-0415
HU1-24-0420

PROPOSED UNDERGROUND CONDUIT CONSTRUCTION
CHANCELLOR AVE
TOWN OF VIEW ROYAL
HU1-24-0416

SHEET 1 OF 3

REF. MAP O FILE 0416-01

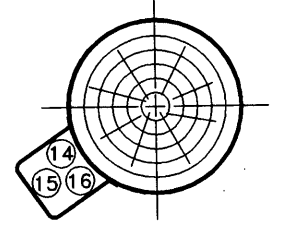
BCTEL ACCESS ENGINEERING A1



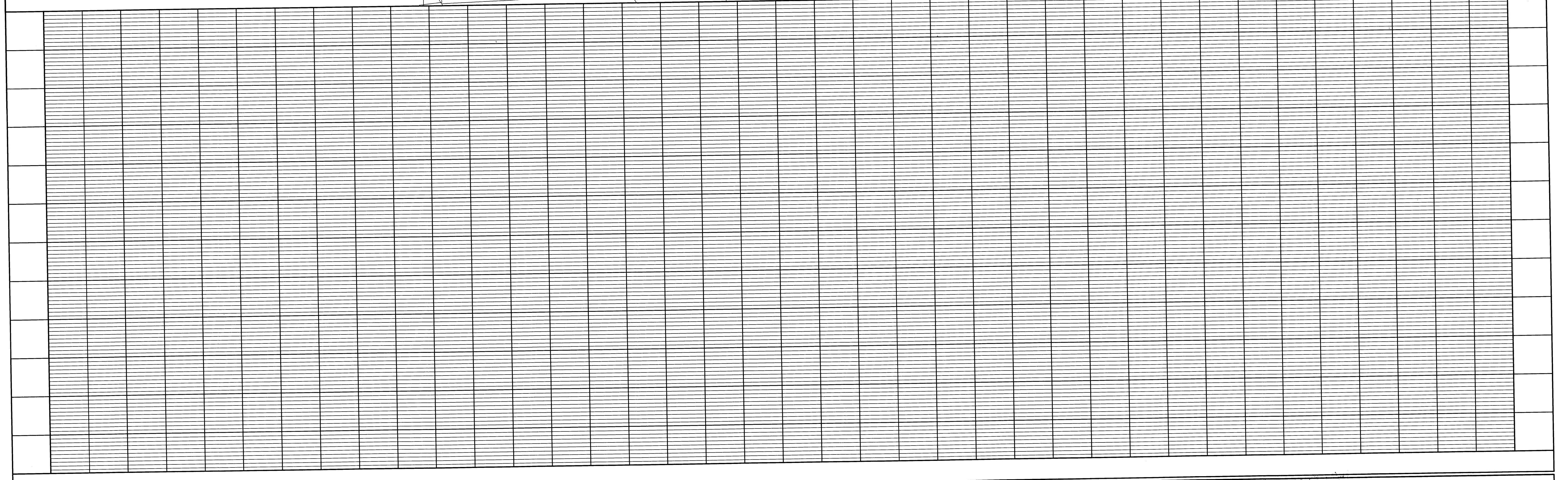
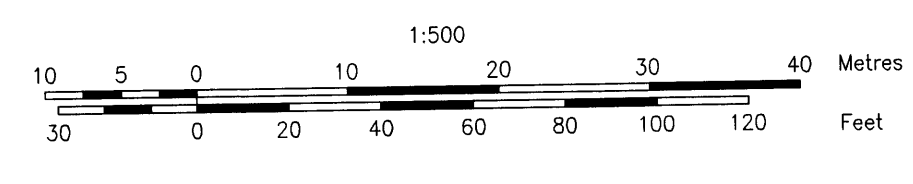
MANHOLE 95 DUCT DETAIL

START OF CONSTRUCTION JOIN TO EXIST 9-100mm PVC DB2

PROPOSED MANHOLE MH#95 TYPE PLMH #3152 1.8m X 3.2m 2.0m HR O.D.



LAT POLE #1 DETAIL



UTILITY LEGEND T — PROPOSED B.C. TEL E — EXISTING B.C. TEL O — OIL LINE B.C.H.&P.A.	S — ST. OR SAN. SEWER C — CULVERT W — WATER G — GAS	SL — STREET LIGHTING FA — FIRE ALARM SH — STEAM HEATING	APPROVING OFFICE : DATE :	AS CONSTRUCTED DATE : 0 MICROFILMED DATE : 0	APPROVED: O DESIGNED: H ISOMAA CONTRACT: O W.O. NO.: 709531	DRAWN: LWV CHECKED: O DATE: 14/11/95 SCALE: AS SHOWN	REVISION: 2	HU1-24-0416 SHEET 2 OF 3	BCTEL ACCESS ENGINEERING	A1
			APPROVING OFFICE : DATE :	AS CONSTRUCTED DATE : 0 MICROFILMED DATE : 0	APPROVED: O DESIGNED: H ISOMAA CONTRACT: O W.O. NO.: 709531	DRAWN: LWV CHECKED: O DATE: 14/11/95 SCALE: AS SHOWN				