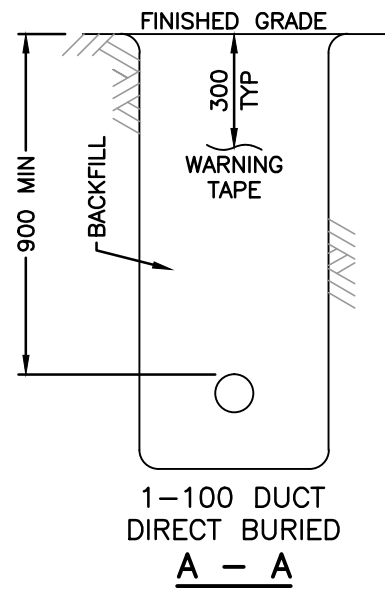
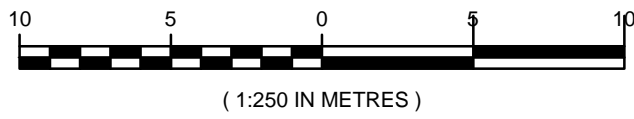
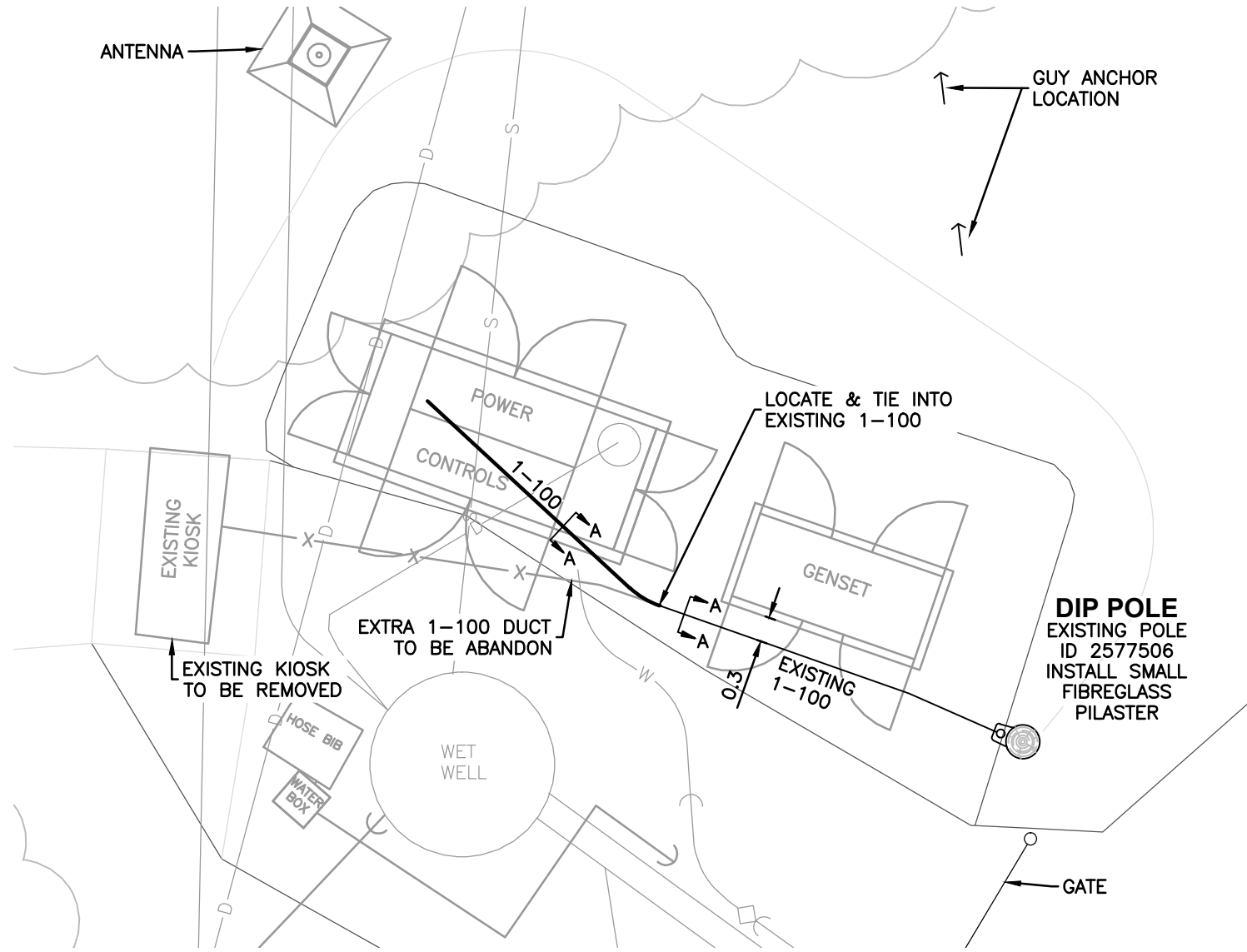


PLAN
1:250

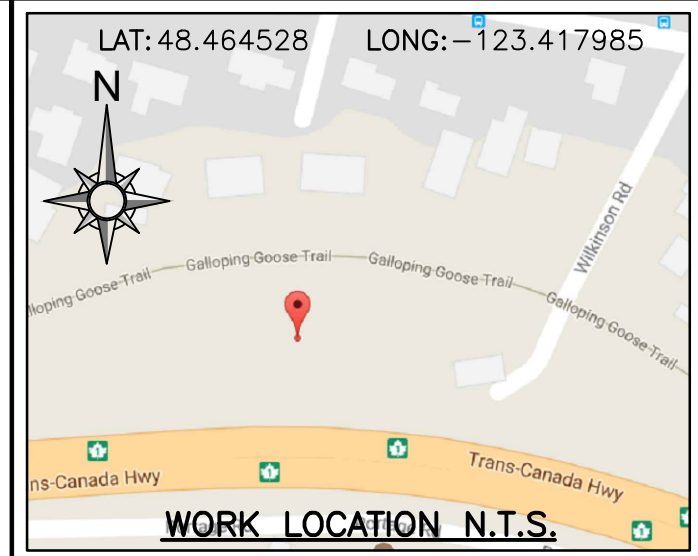


TRENCH DETAILS
N.T.S.



DETAILS
N.T.S.

DISCLAIMER
THIS DRAWING IS THE PROPERTY OF BC HYDRO AND SHALL NOT BE USED, REUSED OR REPRODUCED WITHOUT THE CONSENT OF BC HYDRO. BC HYDRO WILL NOT BE HELD RESPONSIBLE FOR THE IMPROPER OR UNAUTHORIZED USE OF THIS DRAWING AND WILL NOT BE LIABLE FOR ANY LOSSES OR OTHER CONSEQUENCES RESULTING FROM THE USE OR RELIANCE UPON, OR ANY CHANGES MADE TO, THIS DRAWING. PLEASE NOTE THAT BC HYDRO DOES NOT ASSUME RESPONSIBILITY FOR THE ACCURACY OR COMPLETENESS OF THE CONTENTS WHETHER SHOWN OR OMITTED FROM THIS DRAWING.



BC ONE CALL

CALL BEFORE YOU DIG
1-800-474-6886
CALL AT LEAST 3 FULL WORKING DAYS BEFORE YOU PLAN TO DIG



CIVIL SPEC. 1323 NOTES:

- BC HYDRO UNDERGROUND CIVIL INSPECTOR MUST BE NOTIFIED **48 HOURS** PRIOR TO CONSTRUCTION.
- ALL WORK TO BE PERFORMED IN ACCORDANCE WITH CLASS OF WORK SPECIFICATION 1323 AND BC HYDRO UNDERGROUND DISTRIBUTION ENGINEERING STANDARDS SERIES ES53 AND ES54. ANY CHANGES NEED TO HAVE PRIOR APPROVAL OF BC HYDRO CIVIL INSPECTOR.
- ALL CONDUIT INSTALLATION FOR BC HYDRO ON PUBLIC OR PRIVATE PROPERTY SHOULD HAVE MIN. 0.9m COVER AND ANY FACTORY BEND MUST HAVE A MIN. RADIUS OF 0.9m.
- ALL UTILITIES (EXCEPT TELUS) MUST MAINTAIN A 0.9m HORIZONTAL AND 0.3m VERTICAL SEPARATION FROM BC HYDRO DUCT UNLESS DIRECTED OTHERWISE BY BC HYDRO CIVIL INSPECTOR.
- OTHER UTILITIES SHOWN ON THE CIVIL DRAWING ARE FOR REFERENCE ONLY. PROVE LOCATION OF ALL UTILITIES IN THE WORK AREA BEFORE CONSTRUCTION. FOR CURRENT INFORMATION CONTACT BC ONE CALL.
- ALL OFFSETS INDICATE CENTERLINE OF BC HYDRO PLANT.
- METRES EXPRESSED IN DECIMALS, MILLIMETRES IN WHOLE NUMBERS.
- TRANSFORMER MUST BE A MIN. OF 1.5m BEHIND NON-MOUNTABLE CURB OR PROTECTED. FINAL NUMBER AND LOCATION OF PROTECTION POSTS TO BE DETERMINED IN THE FIELD BY BC HYDRO CIVIL INSPECTOR.
- FOR TRANSFORMER PAD COUNTERPOISE CLEARANCES TO OTHER UTILITIES AND UNDERGROUND CONDUCTIVE SURFACES, SEE ES54.
- MIN. OFFSET FOR BC HYDRO DUCTS, IN JOINT TRENCH, FROM PROPERTY LINE IS 1.2m, UNLESS OTHERWISE NOTED.
- STUB SERVICE DUCT 1.0m FROM PROPERTY CORNER AND 1.0m INTO THE LOT UNLESS OTHERWISE NOTED.

CIVIL PLAN LEGEND:

- PROPOSED DUCT
- EXISTING DUCT
- FIELD COMPLETED DUCT
- ○ ○ SERVICE BOX
- TERMINAL POLE
- LOW PROFILE TRANSFORMER (LPT-PYRAMID PAD)
- LOW PROFILE TRANSFORMER (LPT)
- PAD MOUNT TRANSFORMER (PMT)
- 3# & 1# JUNCTION & PULL BOXES (332, 632, 832 & 1232)
- PRECAST MANHOLE
- VISTA SWITCH SUBMERSIBLE (VSWB)
- VISTA SWITCH ABOVE GROUND (VSWA)

REFER TO ES53 AND ES54 UNDERGROUND STANDARDS

CSA S250 ACCURACY NAD 83 - 10 UTM
BASE ACCURACY LEVEL: 4 +/- 1000 mm
ASB ACCURACY LEVEL: 4 +/- 1000 mm

UNDERGROUND UTILITY CHECKS

	Within 2m of Plant Location (Y/N)	Location shown on (Y/N)		Hand Dig (Y/N)
		Plan	Field	
Gas				
Water				
San Sewer				
Stm Sewer				
Telephone				
Cable				
Electrical				
Other				

BC 1 Call Ticket No:
Expiry Date:
Design Contact:

For Mechanical Excavation within 1 metre of plant, utilities must be exposed by hand digging, unless the utility / pipeline owner requested a different excavation method.
Planning BC 1 Call Ticket number valid for planning purposes only. Ticket number refresh via Construction BC 1 Call must be completed a minimum of three working days before construction begins.

ISSUED RECORD DRAWING

VER 2.02 SEPTEMBER 25, 2017

NO	REMARKS	DATE	DESIGNED	INDEP CHK	DFTG	DFTG CHK	INSP	REV	ACPT	REF#	DRAWING NUMBER	REFERENCE DWGS
3	ISSUED RECORD DRAWING	2017-12-13	BBELKNAP		MZ	TB	DB					
2	REDRAWN AND ADDED D#4127523	2017.11.28	BBELKNAP		EG							
1	AS CONSTRUCTED	1985.04.01										

DSGN	S.R.B 1985.02.17
INDEP CHK	----
DFTG	J. 1985.02.14
DFTG CHK	----
INSP	----
REV	----
ACPT	----

BC Hydro T&D ENGINEERING & DESIGN

SOUTH VANCOUVER ISLAND
VICTORIA POWER DISTRICT
UNDERGROUND DUCT AND STRUCTURES FOR
DIP SERVICE TO PUMP HOUSE
WEST OF WILKINSON RD
SAANICH

DATE: 1985.02.14 GRID NO: ---- DWG NO: 500-U07-01999 SHEET 1 OF 1 SIZE C R 3