

I CONFIRM THAT THE FOLLOWING WORKS: ROAD, DRAIN WERE INSPECTED DURING CONSTRUCTION AND WERE INSTALLED TO THE BEST OF MY KNOWLEDGE, IN ACCORDANCE WITH MUNICIPAL SPECIFICATIONS AND AS SHOWN ON THESE DRAWINGS.

THE SEAL AND SIGNATURE OF THE UNDERSIGNED ON THIS DRAWING CERTIFIES THAT THE ROAD, DRAIN DESIGN INFORMATION CONTAINED IN THESE DRAWINGS ACCURATELY REFLECTS THE ORIGINAL DESIGN AND THE MATERIAL DESIGN CHANGES MADE DURING CONSTRUCTION THAT WERE BROUGHT TO THE UNDERSIGNED'S ATTENTION. THESE DRAWINGS ARE INTENDED TO INCORPORATE ADDENDA, CHANGE ORDERS, AND OTHER MATERIAL DESIGN CHANGES, BUT NOT NECESSARILY ALL SITE INSTRUCTIONS.

THE UNDERSIGNED DOES NOT WARRANT OR GUARANTEE, NOR ACCEPT ANY RESPONSIBILITY FOR THE ACCURACY OR COMPLETENESS OF THE AS-CONSTRUCTED INFORMATION SUPPLIED BY OTHERS CONTAINED IN THESE DRAWINGS, BUT DOES, BY SEALING AND SIGNING, CERTIFY THAT THE AS-CONSTRUCTED INFORMATION, IF ACCURATE AND COMPLETE, PROVIDES AN AS-CONSTRUCTED SYSTEM WHICH SUBSTANTIALLY COMPLIES IN ALL MATERIAL RESPECTS WITH THE ORIGINAL DESIGN INTENT.

RECORD DRAWING

ISSUED				REVISION			
NO.	DESCRIPTION	DATE	BY	NO.	DESCRIPTION	DATE	BY
1	RECORD DRAWING	20190808	KHG RT				

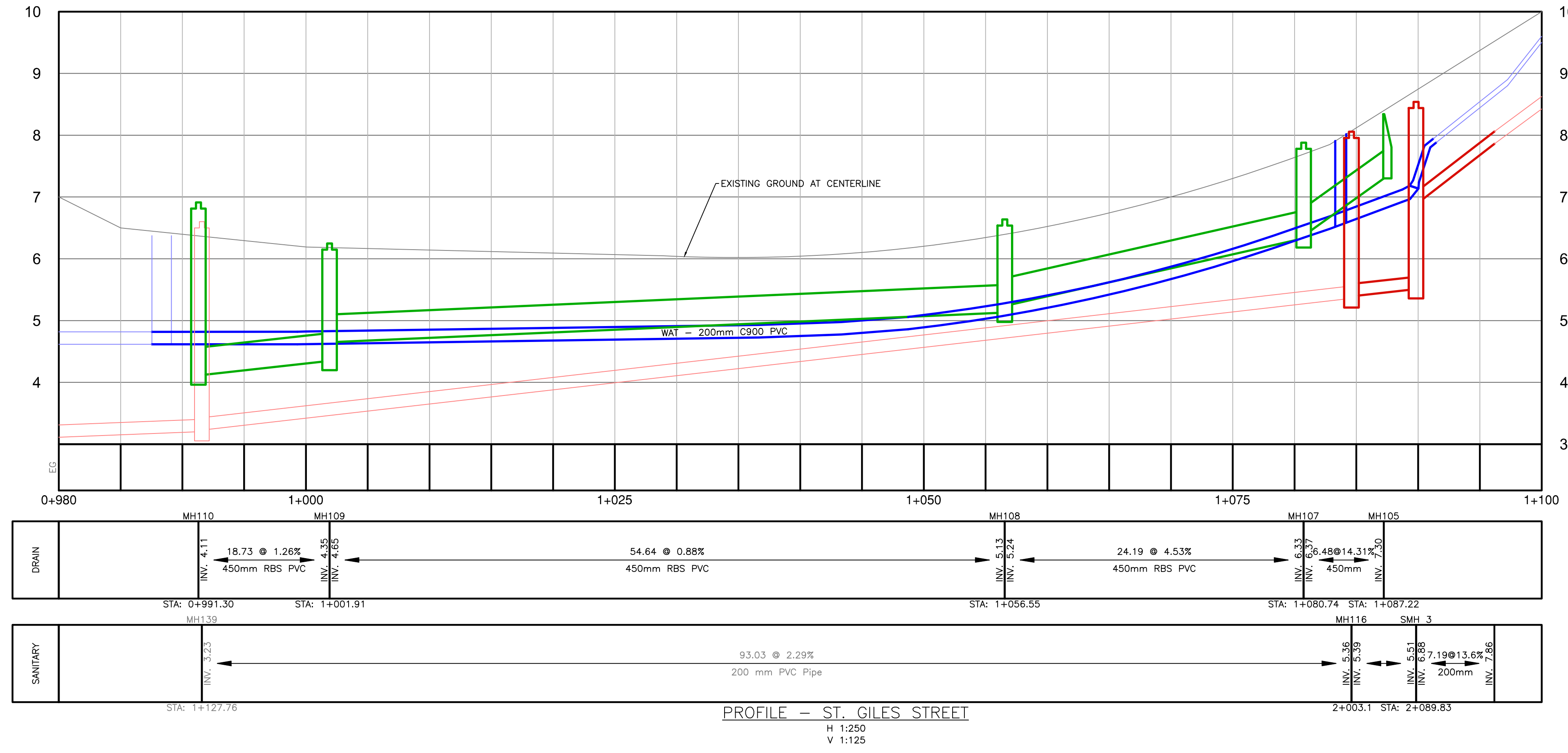
LEGEND	
LAMP STANDARD	LS
POLE (Hydro, Tel.)	PP
U/G WIRING	UE
GAS	G
WATER	W
SEWER	S
DRAIN	D
CLEANOUT	CO
CATCHBASIN	CB
MANHOLE	MH
SERVICE RISER	SR
MOUNTABLE CURB	MC
NON-MOUNT. CURB	NMC
EDGE ASPHALT	EA
DITCH	DI
METER	M
FLUSH VALVE	FV
VALVE	V
REDUCER	R
HYDRANT	H
AIR VALVE	AV

JEA J E ANDERSON & ASSOCIATES
SURVEYORS - ENGINEERS

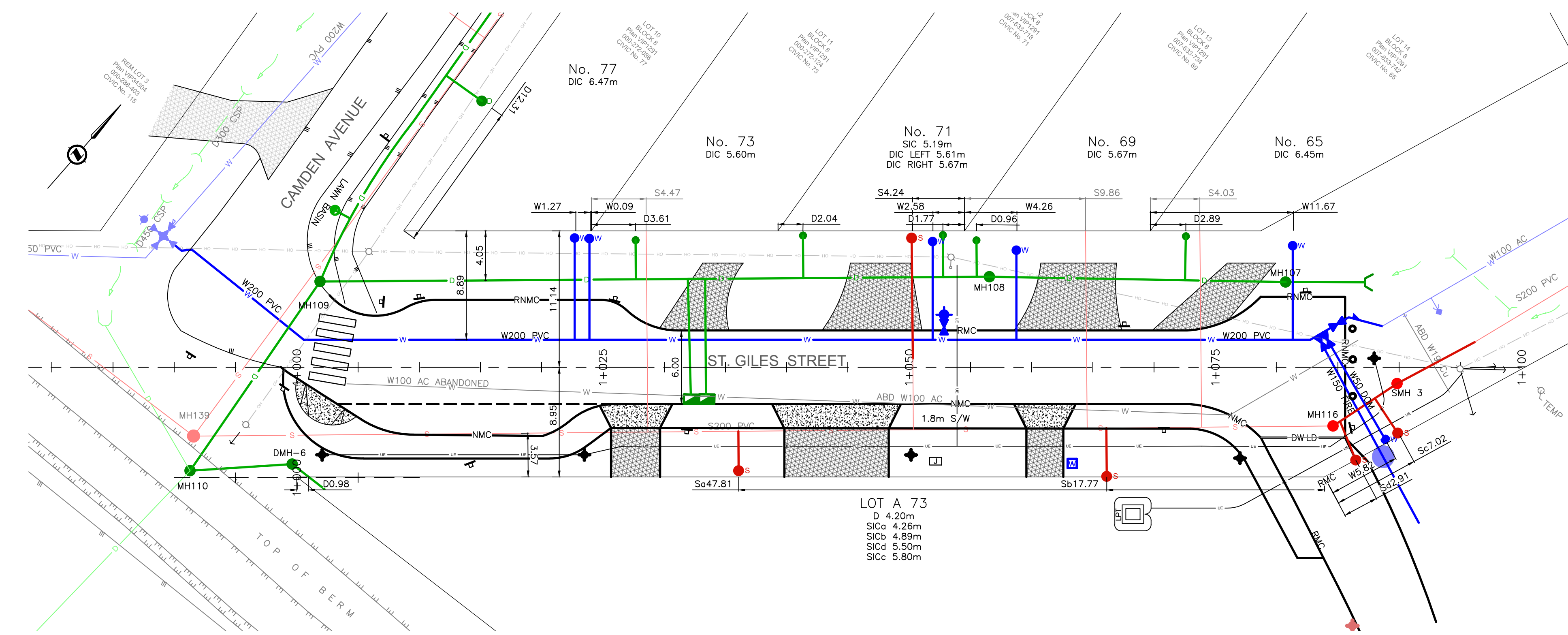
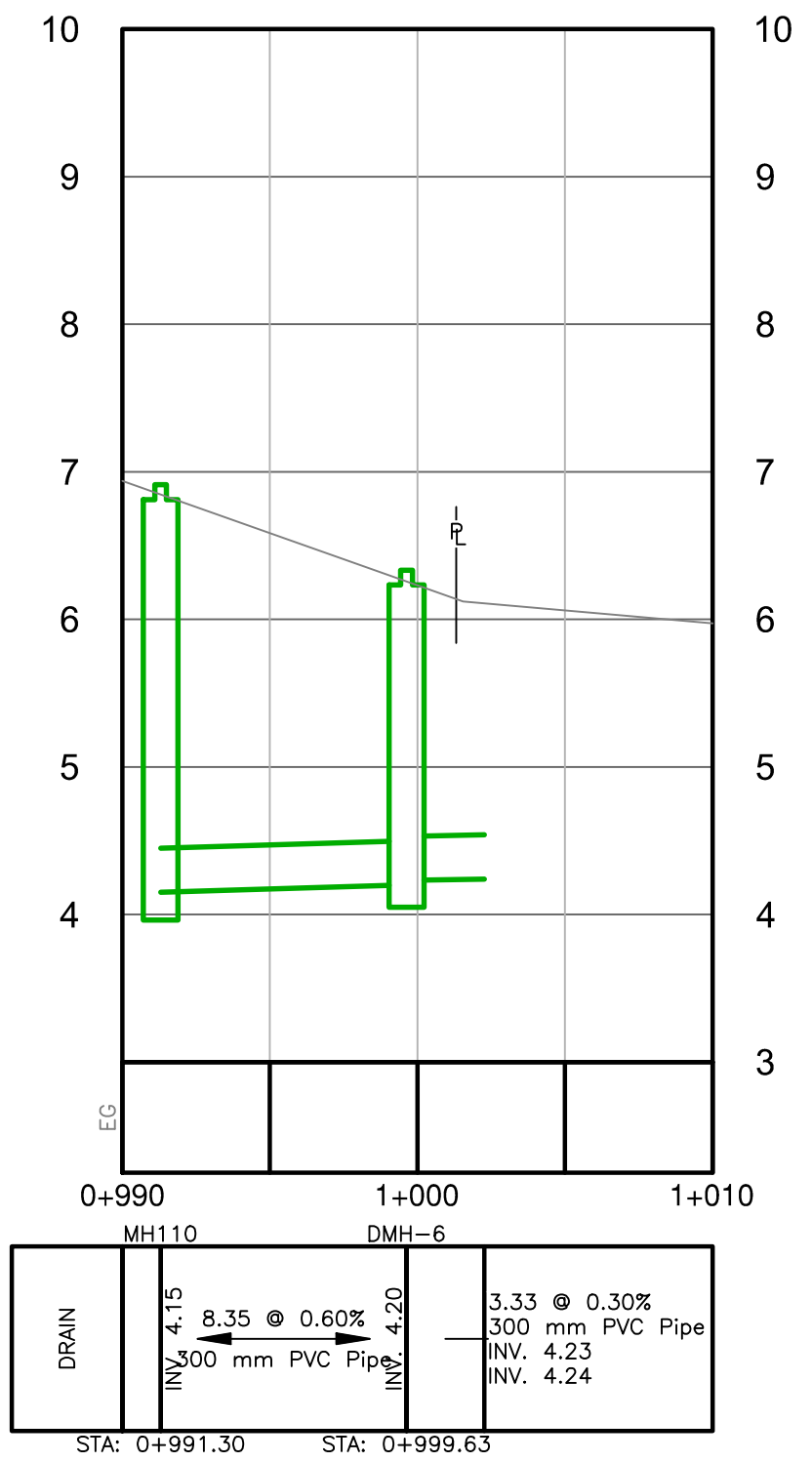
VICTORIA NANAIMO PARKSVILLE
PHONE: 250-727-2214 FAX: 250-727-3395

JURISDICTION: TOWN OF VIEW ROYAL
CLIENT: 0990124 BC LTD
PROJECT: AVANTI 22 RECORD INFORMATION CAMDEN AVENUE - PLAN & PROFILE
JEA-INDEX No. 29696-ASC1
ENGINEERS SEAL: R. TUCK #26072
MUN. FILE: SHEET 1 OF 2

V:_Engineering\29696_1342-1352 CH (ST. GILES)\02 - Drawings (Emp)\As-Constructed\20190808 - 29696 - ASBUIL.Dwg Plot Date: August 8, 2019



PROFILE - ST. GILES STREET
H 1:250
V 1:125



PLAN - ST. GILES STREET
H 1:250

I CONFIRM THAT THE FOLLOWING WORKS: ROAD, DRAIN, SANITARY, WATER, WERE INSPECTED DURING CONSTRUCTION AND WERE INSTALLED, TO THE BEST OF MY KNOWLEDGE, IN ACCORDANCE WITH MUNICIPAL SPECIFICATIONS AND AS SHOWN ON THESE DRAWINGS.

THE SEAL AND SIGNATURE OF THE UNDERSIGNED ON THIS DRAWING CERTIFIES THAT THE ROAD, DRAIN, SANITARY, WATER DESIGN INFORMATION CONTAINED IN THESE DRAWINGS ACCURATELY REFLECTS THE ORIGINAL DESIGN AND THE MATERIAL DESIGN CHANGES MADE DURING CONSTRUCTION THAT WERE BROUGHT TO THE UNDERSIGNED'S ATTENTION. THESE DRAWINGS ARE INTENDED TO INCORPORATE ADDENDA, CHANGE ORDERS, AND OTHER MATERIAL DESIGN CHANGES, BUT NOT NECESSARILY, ALL SITE INSTRUCTIONS.

THE UNDERSIGNED DOES NOT WARRANT OR GUARANTEE, NOR ACCEPT ANY RESPONSIBILITY FOR THE ACCURACY OR COMPLETENESS OF THE AS-CONSTRUCTED INFORMATION SUPPLIED BY OTHERS CONTAINED IN THESE DRAWINGS, BUT DOES, BY SEALING AND SIGNING, CERTIFY THAT THE AS-CONSTRUCTED INFORMATION, IF ACCURATE AND COMPLETE, PROVIDES AN AS-CONSTRUCTED SYSTEM WHICH SUBSTANTIALLY COMPLIES IN ALL MATERIAL RESPECTS WITH THE ORIGINAL DESIGN INTENT.

RECORD DRAWING

ISSUED				REVISION			
NO.	DESCRIPTION	DATE	BY	NO.	DESCRIPTION	DATE	BY
1	RECORD DRAWING	20190808	KHG CK RT				

LEGEND		
LAMP STANDARD	LS	◆
POLE (Hydro, Tel.)	PP	◆
U/G WIRING	UE	—
GAS	G	—
WATER	W	—
SEWER	S	—
DRAIN	D	—
CLEANOUT	CO	—
CATCHBASIN	CB	—
MANHOLE	MH	—
SERVICE RISER	SR	—
MOUNTABLE CURB	MC	—
NON-MOUNT. CURB	NMC	—
EDGE ASPHALT	EA	—
DITCH	D	—
METER	M	—
FLUSH VALVE	FV	—
VALVE	V	—
REDUCER	R	—
HYDRANT	H	—
AIR VALVE	AV	—

JEA J E ANDERSON & ASSOCIATES
SURVEYORS - ENGINEERS
VICTORIA NANAIMO PARKSVILLE
PHONE: 250-727-2214 FAX: 250-727-3395

JURISDICTION: TOWN OF VIEW ROYAL
CLIENT: 0990124 BC LTD
PROJECT: AVANTI 22 RECORD INFORMATION ST. GILES STREET - PLAN & PROFILE
JEA-INDEX No.: 29696-ASC2
ENGINEERS SEAL: [Signature] MUN. FILE SHEET 2 OF 2

V:_Engineering\29696_1342-1352 CH (ST. GILES)\02 - Drawings (Eng)\As-Constructed\20190808 - 29696 - ASBUILT.dwg Plot Date: August 8, 2019