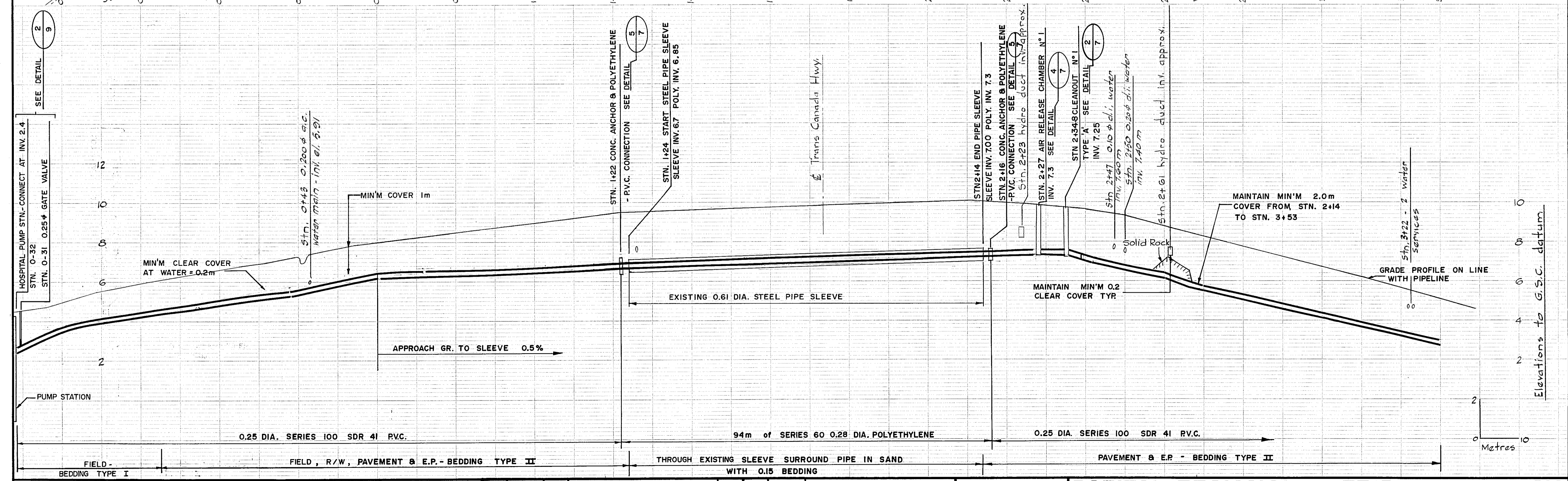


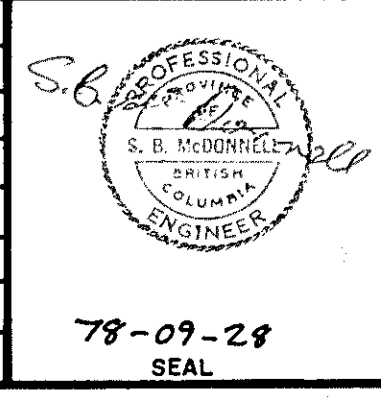
THE CONTRACTOR SHALL CONFIRM THE ACTUAL LOCATION OF ALL SERVICES WITHIN THE AREA OF OPERATIONS AND SHOULD NOT ASSUME THAT THE LOCATIONS OF SERVICES SHOWN ON THE DRAWINGS ARE EITHER ACCURATE OR COMPLETE.

CURVE 1			
Δ	=	12°00'	
R	=	126.76 m	
T	=	13.323 m	
Lc	=	26.55	

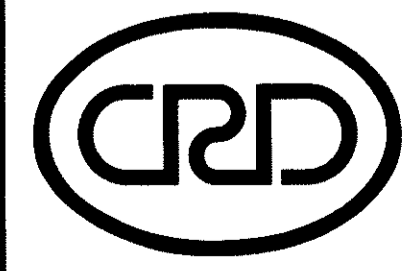


Legend

⊕PP	Power Pole	I.P.	Iron Pin
owm	Residential Water Meter	O.P.	Old Post
-ep-	Edge of Pavement		
-w-	Water Line		
+hd	Water Hydrant		
□	Water Valve Box		
-	Ditch		



BY.	DATE.	No.	REVISION.	ENG.	No.	DATE.	ISSUE.
	18/12/89	D	UPDATED CADASTRAL BASE				
	4/3/83	C	ADDED CADASTRAL INFORM.	3	2/10/79		AS CONSTRUCTED
	9/10/79	B	REVISED AS CONSTRUCTED	2	2/12/70		FOR REVISION #1 OF CONSTRUCTION
	8/12/78	A	Relocate Pump Stn. & change pipe route to stn. 0+25	1	29/9/78		FOR TENDER



CAPITAL REGIONAL DISTRICT ENGINEERING

SURVEYED C.R. & I.M.	FIELD BOOK No. 11817	VICTORIA GENERAL HOSPITAL - NORTHERN-TRUNK SEWER	
DESIGNED C.R.	R.E.S. No. SC78-114	HOSPITAL PUMP STATION - HELMCKEN RD. - STN. 0+32 - 3+30	
DRAWN C.R.	CONTRACT NUMBER 78-738	SCALE HORIZONTAL.	DRAWING NUMBER.
CHECKED S.B.M.	DATE SEPT. 1978	METRIC - 1:500	25-S109-1
APPROVED N.H.		SCALE VERTICAL.	ISSUE
		1:100	3
			1 of 17