

- HYPISOGRAPHIC CONTOURS WITH ELEVATION INDEX
- TEST PIT, TEST HOLE (YEAR 1993, No. 02)
- TREE, SPOT ELEVATION
- MONUMENT, WOODEN POST, STANDARD IRON PIN
- DITCH/CREEK CENTRE
- ROAD
- DISTRICT LOT BOUNDARY
- PARCEL BOUNDARY
- RESERVE BOUNDARY
- GRANULAR BOUNDARY
- SURVEY BOUNDARY
- GARDEN, LAWNS, VEGETATION
- FENCE
- TREE LINE
- CSA CRUSHER SETUP AREA
- DEVELOPMENT DIRECTION
- POTENTIAL FUTURE EXTENSION
- BUFFER AREA
- STOCKPILE AREA:
SA-A = AGGREGATE
SA-OB = OVERBURDEN
SA-TS = TOPSOIL
SA-RJ = REJECT
SA-DEB = DEBRIS
- EXISTING STOCKPILE:
STPL-A (Type) = AGGREGATE
STPL-OB = OVERBURDEN
STPL-TS = TOPSOIL
STPL-RJ (Type) = REJECT
STPL-DEB = DEBRIS

GENERAL NOTES

- Coordinates are UTM Zone 9 NAD 83.
- Lot boundaries are approximate.
- Survey date: 2009-03-25 (AeroGeometrics)

MINING NOTES

General:

- Development areas are based on sampling completed to a 5 metre depth. Once these thicknesses have been extracted re-evaluation of material quality will be required.
- Mining Area "A" and Area "B" north of the reserve boundary is prohibited until the reserve has been extended.
- A minimum 2 metre cleared, grubbed and stripped zone is to be maintained above all active pit faces.
- All pit development slopes will be 1.5 H to 1.0 V.
- All final reclamation slopes will be 2.0 H to 1.0 V.
- The pit is to be developed in accordance with Health, Safety and Reclamation Code for Mines in B.C., Reclamation and Environmental Protection Handbook for Sand, Gravel and Quarry Operations in B.C., Aggregate Operators Best Management Practices Handbook for B.C.
- For material extractions in excess of 1000 m³ a Sand and Gravel/Quarry Operations Notice of Work form (H1258) must be sent to the Ministry of Energy and Mines 14 days prior to commencement of operations.
- The dumping of off-site soils, overburden or road building debris is not permitted.
- An H1263 Gravel/Aggregate Usage Report must be completed and submitted to the resource Aggregate Resource Manager for all pit run and crushed materials used or produced.

Development Area "A"

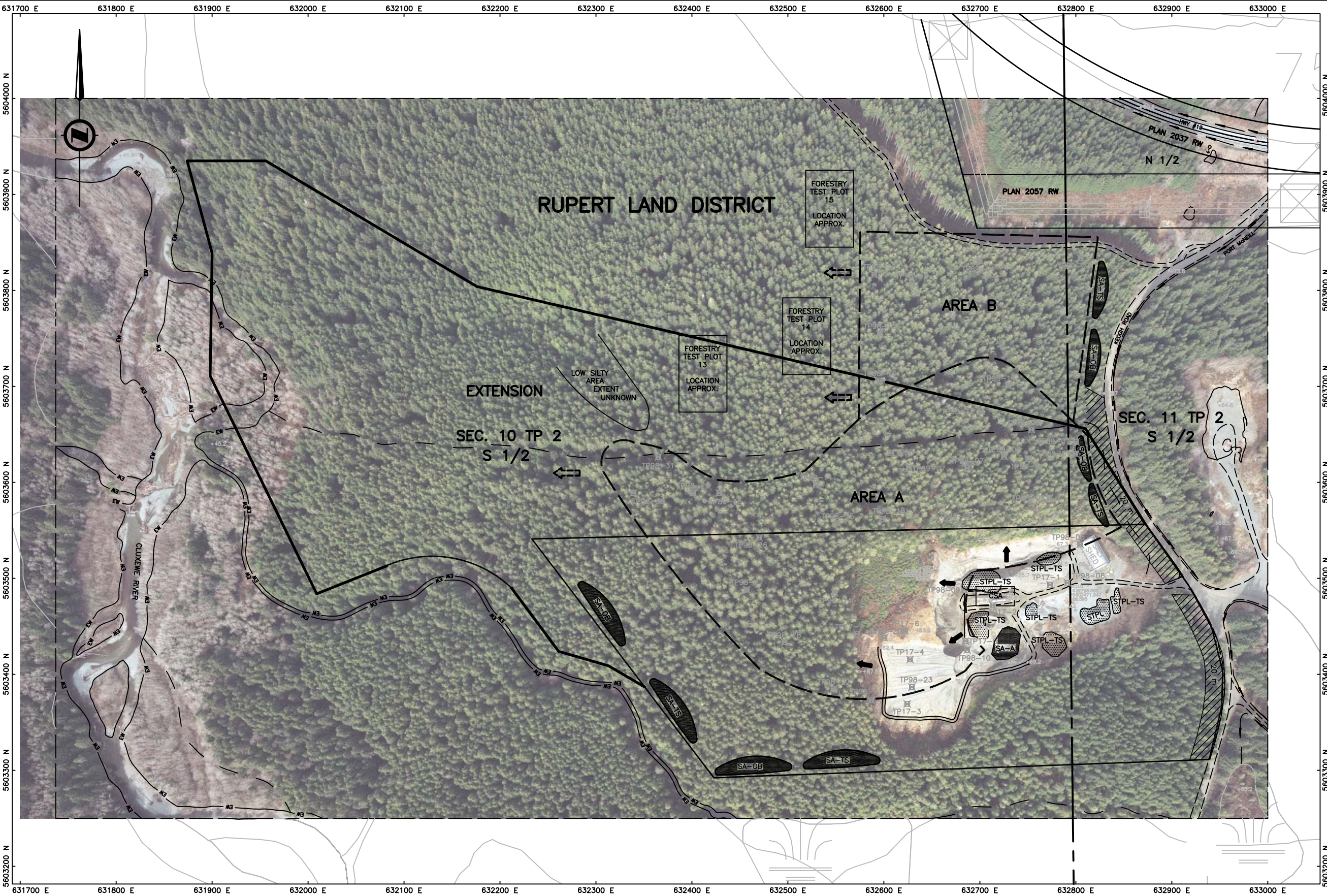
- Selective mining and the use of primary crusher is required
- For production of MAM, addition of a fine blend sand may be required

Development Area "B"

- Minor sand rejection may be required on the #30 sieve size to produce SGSB.

APPROVED USAGE

AREA	PIT RUN	SGSB	WGB (mm)			PAVING			BIEF	WAB
			25	50	75	MAM	CAM	SUPER		
A		✓				✓				
B	✓	✓							✓	✓



INFORMATION PROVIDED HEREIN IS INTENDED TO BE USED BY THE MINISTRY OF TRANSPORTATION AND INFRASTRUCTURE IN CONJUNCTION WITH ALL OTHER DATA RELEVANT TO THE SITE. THE SOIL AND GROUND WATER CONDITIONS SHOWN ARE REPRESENTATIVE AT THE TEST HOLE LOCATIONS ON THE DATES INDICATED. CONDITIONS ARE SUBJECT TO CHANGE WITH TIME. THE MINISTRY OF TRANSPORTATION AND INFRASTRUCTURE SHALL NOT BE HELD LIABLE FOR ANY CLAIMS OR ACTIONS ARISING FROM THE USE OR INTERPRETATION OF THE DATA HEREIN PROVIDED.

DRAFTING BY:
 Information WRANGLERS

SCALE: 0 1:4000 100

REV.	DATE	REVISIONS	INITIALS

Ministry of Transportation and Infrastructure
Geotechnical and Materials Engineering

CAD FILE: PDP6009.DWG
PDF: PDP6009.PDF
NEGATIVE: -

DESIGNED: SF
DRAWN: IWTS
CHECKED: TL

DATE: 2017-08-22
DATE: 2017-08-22
DATE: 2017-08-22

HWY 19 CAMPBELL WAY CLUXEWE DELTA PIT #6009 PIT DEVELOPMENT PLAN			
FILE No. 6009	PROJECT No. 16752-2018	REG 1	DRAWING No. -

CANCEL PRINTS BEARING PREVIOUS LETTER