

GENERAL NOTES:

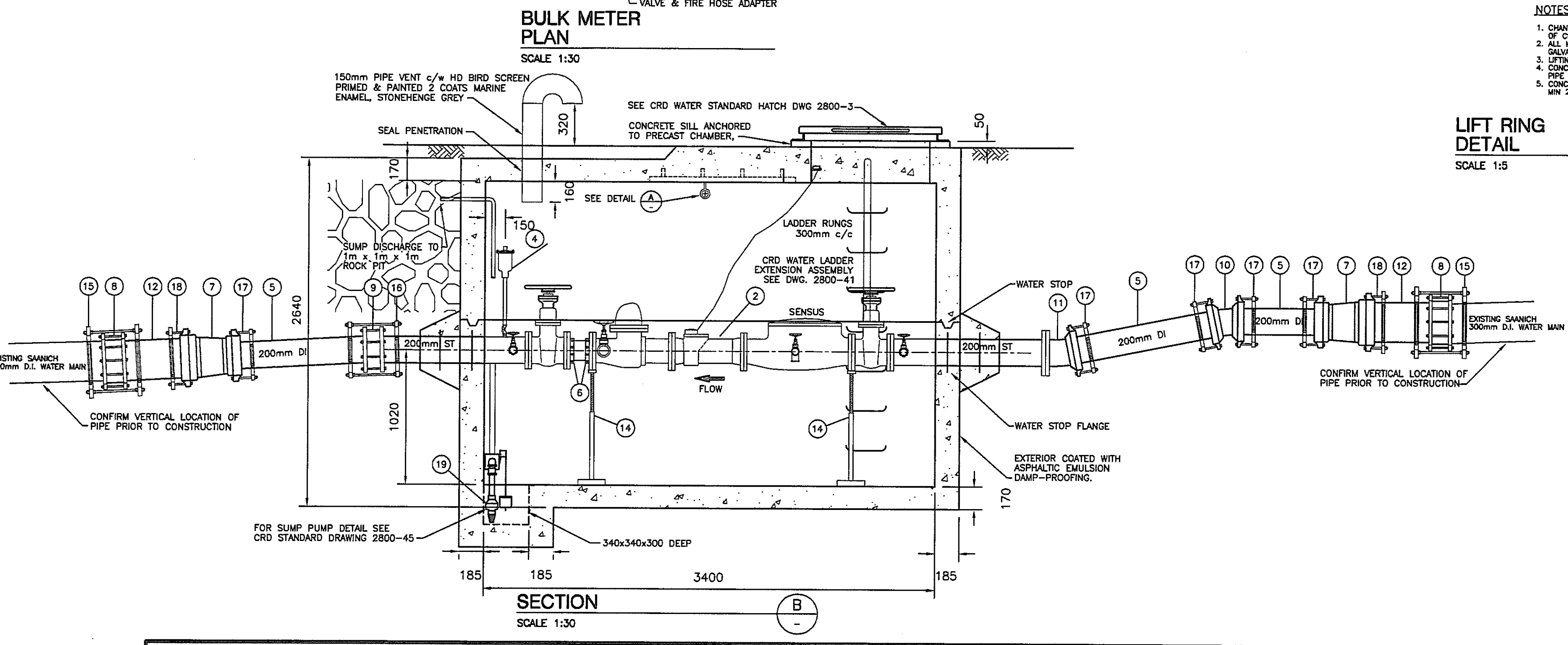
- ALL CONSTRUCTION & MATERIALS SHALL BE IN ACCORDANCE WITH THE CRD WATER DISTRICT'S SPECIFICATIONS.
- THE MINIMUM WATER MAIN COVER SHALL BE 0.9m.
- FLUSHING & DISINFECTION SHALL BE PERFORMED IN ACCORDANCE WITH CURRENT AWWA STANDARDS.
- ENSURE CHLORINE SOLUTIONS ARE NEUTRALIZED IN ACCORDANCE WITH THE MINISTRY OF ENVIRONMENT & FISHERIES & OCEANS CANADA REGULATIONS.
- ANY ROAD REINSTATEMENT WILL BE TO THE TOWN OF VIEW ROYAL STANDARDS.
- REINSTATEMENT OF DRIVEWAYS, BOULEVARDS & OTHER FEATURES TO BE AS GOOD OR BETTER THAN BEFORE EXCAVATION.
- CONTACT BC HYDRO TO RESTRAIN POLE DURING CONSTRUCTION.

ENGINEERING NOTES:

- CHAMBER A.E. MODEL-331822 PRE-CAST METER CHAMBER DESIGNED TO WITHSTAND HS-20 LOADING, SHIPPING AND INSTALLATION LOADS.
- CHAMBER SHALL BE CAST WITH LADDER RUNGS @ 300mm c/c TWO LIFTING RINGS AS SHOWN.
- ALL PIPE OPENINGS SHALL BE GROUT SEALED AND ROUGH SURFACES GROUND SMOOTH, FINAL PIPE OPENINGS SURFACES SHALL HAVE TWO COATS OF "NYPEX" WATERPROOFING TREATMENT APPLIED AS PER MANUFACTURERS INSTRUCTIONS TO PREVENT WATER INTRUSION.
- CHAMBER INTERIOR WALLS & ROOF: TWO COATS WHITE LATEX PAINT; EXTERIOR: ASPHALTIC EMULSION; FLOOR: UNCOATED.
- 300mm x 300mm x 300mm DEEP SUMP TO BE CAST INTEGRAL WITH VAULT.
- BACK FILL EXCAVATION WITH 80mm MINUS PIT RUN GRAVEL COMPACTED TO 95% PROCTOR DENSITY IN LAYERS NOT TO EXCEED 150mm.
- PROVIDE 150mm CUSHION OF 19mm MINUS CRUSHED GRAVEL ON UNDERSIDE AND ALL SIDES OF CHAMBER. COMPACTED TO 95% PROCTOR DENSITY IN LAYERS NOT EXCEEDING 150mm.

LIST OF MATERIALS

ITEM	DESCRIPTION	QUA.
IN CHAMBER		
1	A.E. PRE CAST CHAMBER MODEL 331822	1
2	200mm SENSUS FIRE LINE METER ASSEMBLY	1
3	200mm Ø FLG. x FLG. GATE VALVE c/w HAND WHEEL, AVK	2
4	25mm AIR VALVE, CRISPIN	1
5	200mm Ø P.E. x P.E. DI SPOOL PIECE (CUT TO SUIT)	4
6	200mm Ø UNI-FLANGE	2
7	300mm x 200mm Ø HUB x HUB DI REDUCER, 125# c/w EAR LUGS	2
8	300mm Ø ROMAC FLEXIBLE COUPLING (OR APPROVED EQUAL)	2
9	200mm Ø ROMAC FLEXIBLE COUPLING (OR APPROVED EQUAL)	1
10	200mm Ø HUB x HUB 11.25' DI BEND	1
11	200mm Ø FLG x HUB 11.25' DI BEND	1
12	300mm Ø P.E. x P.E. DI SPOOL PIECE (CUT TO SUIT)	2
13	25mm GATE VALVE, TOYO	5
14	FLANGE SUPPORT, CRD WATER FABRICATED (SECURE TO FLOOR WITH HILTI ANCHOR BOLTS)	2
15	300mm Ø UNI-FLANGE PIPE RESTRAINER "SERIES 1390-C"	2
16	200mm Ø UNI-FLANGE PIPE RESTRAINER "SERIES 1390-C"	1
17	200mm Ø UNI-FLANGE PIPE RESTRAINER "SERIES 1300"	5
18	300mm Ø UNI-FLANGE PIPE RESTRAINER "SERIES 1300"	2
19	"BCA" SUMP DRAIN ASSEMBLY c/w WATTS #007M2-QT BACKFLOW PREVENTER	1



PROPOSED	EXISTING	LEGEND	
⊕	⊕	VALVE	STAND PIPE
⊙	⊙	AIR VALVE	CATCH BASINS
⊖	⊖	HYDRANT	TEL
⊗	⊗	REDUCER	S - SEWER
⊚	⊚	CAP	H - HYDRO
⊛	⊛	METER BOXES	G - GAS
⊜	⊜	WATER	D - DRAIN
⊝	⊝	POLE	IRON PIN
⊞	⊞	LAMP STAND	MONUMENT
⊟	⊟	MANHOLE	RIGHT OF WAY
⊠	⊠	SEWER MH	PROPERTY LINE
⊡	⊡	DRAIN MH	HYDRO MH
⊢	⊢	TEL MH	

VERIFY SCALES
BAR IS 20mm LONG ON ORIGINAL DRAWING.
IF NOT 20mm ON THIS SHEET, ADJUST SCALES ACCORDINGLY.

REUSE OF DOCUMENTS

THIS DRAWING IS OF A CONFIDENTIAL NATURE AND SHALL NOT BE REPRODUCED IN ANY MANNER, NOR USED FOR ANY PURPOSE WHATSOEVER EXCEPT BY WRITTEN PERMISSION OF THE CAPITAL REGIONAL DISTRICT, WATER DEPARTMENT.

ALL UNDERGROUND UTILITY LOCATIONS SHOWN ARE APPROXIMATE AND SHOULD BE CONFIRMED BY MANUAL DIGGING. CAPITAL REGIONAL DISTRICT, WATER DEPARTMENT DOES NOT ACCEPT RESPONSIBILITY FOR ERRORS OR OMISSIONS IN THE INFORMATION SHOWN ON THIS DRAWING.

no.	date	revision	chk	by
C	APR 02	AS CONSTRUCTED	BK	GM
B	OCT 01	ISSUED FOR CONSTRUCTION	BK	GM
A	MAY 01	ISSUED FOR PERMITS	BK	GM

CAPITAL REGIONAL DISTRICT WATER DEPARTMENT
479 ISLAND HIGHWAY VICTORIA, B.C.

SAANICH BULK METER CHAMBER INSTALLATION
ADMIRALS ROAD, EAST OF BURKE STREET

date: MAR 01
acct no: 66331-01
designed: BK / GM
approved: P. MALONE
drawing no: G3800

scale: AS SHOWN
drawn: G. MANNS
checked: BK / OD
view:
accd file: 3810
issue: 3810-1 C

