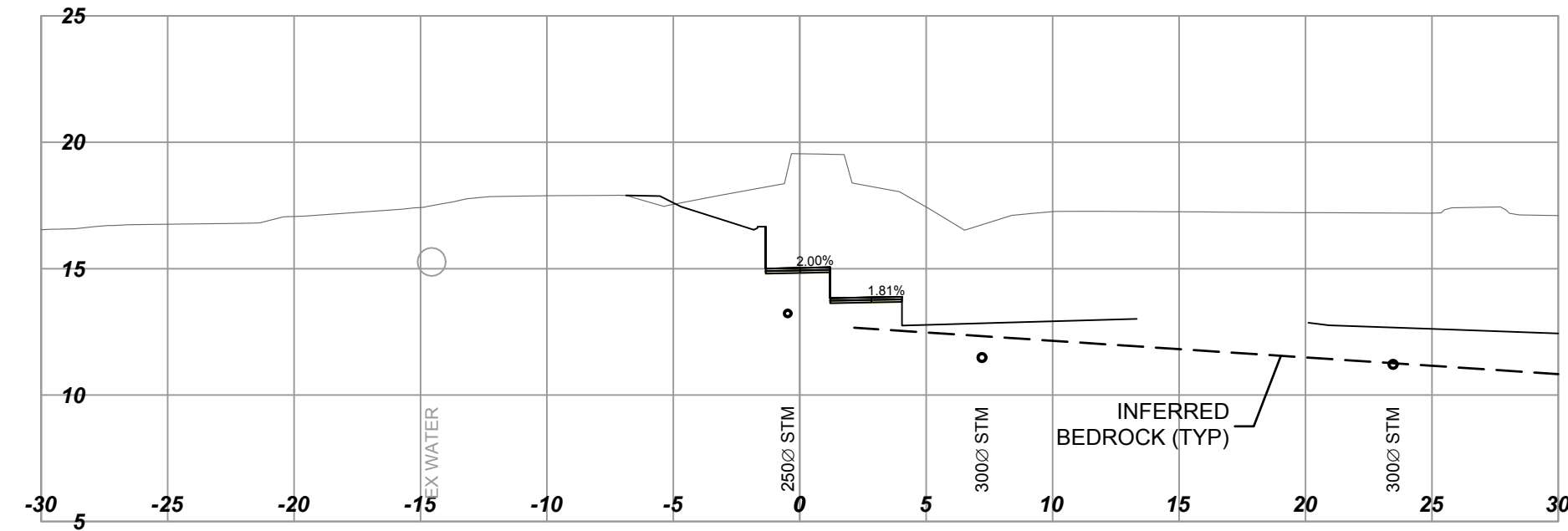
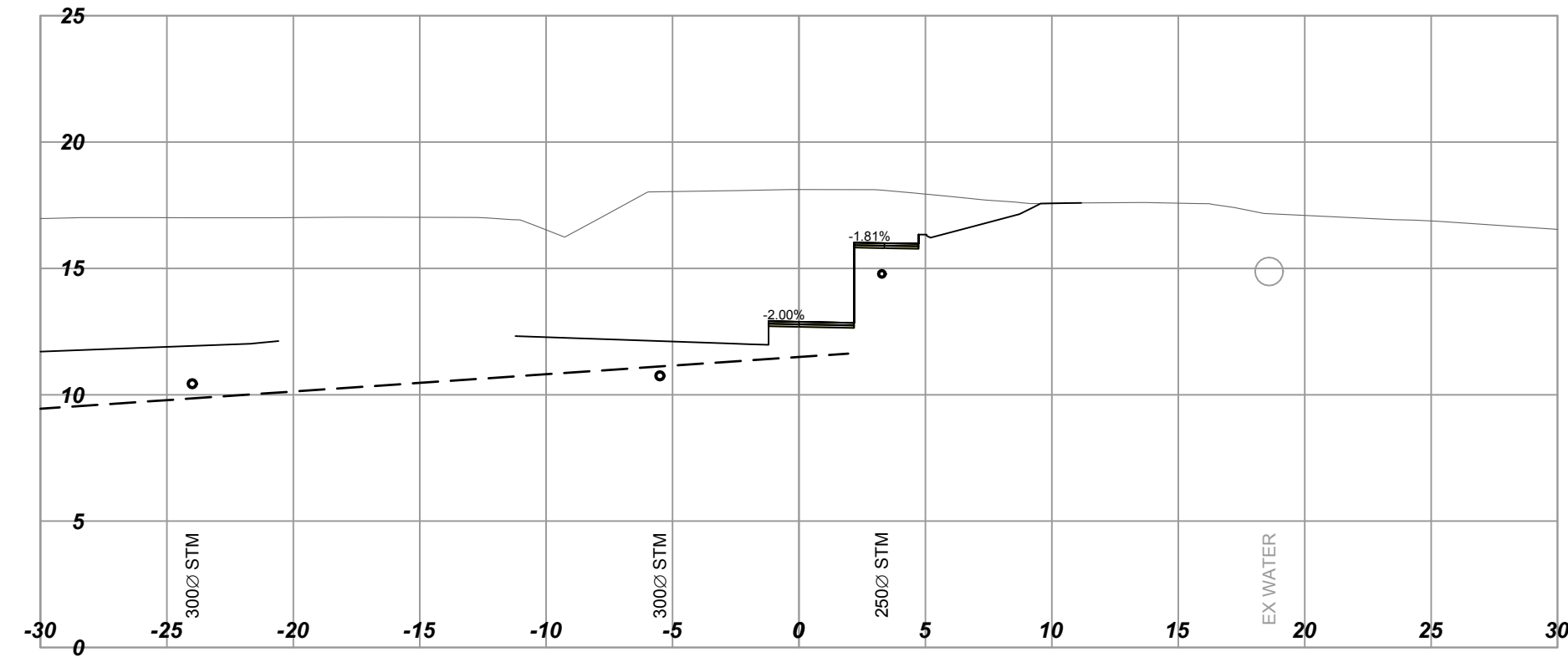


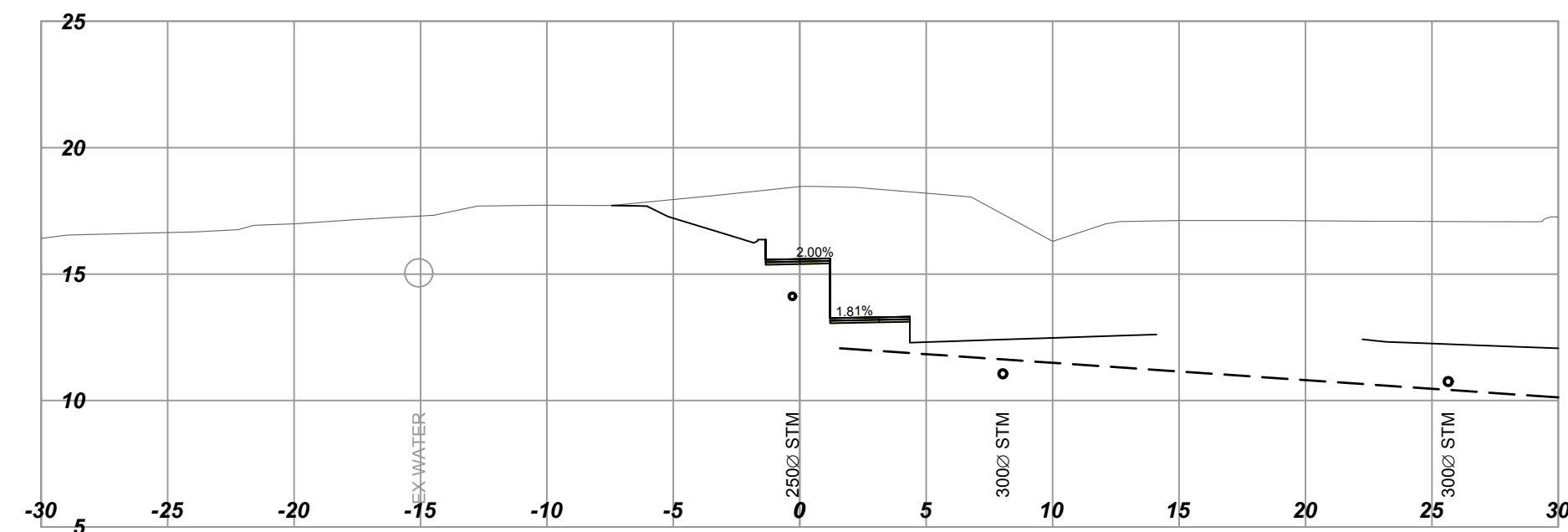
L70  
Horizontal Scale - 1:250  
Vertical Scale - 1:250  
Station: 70+40.000



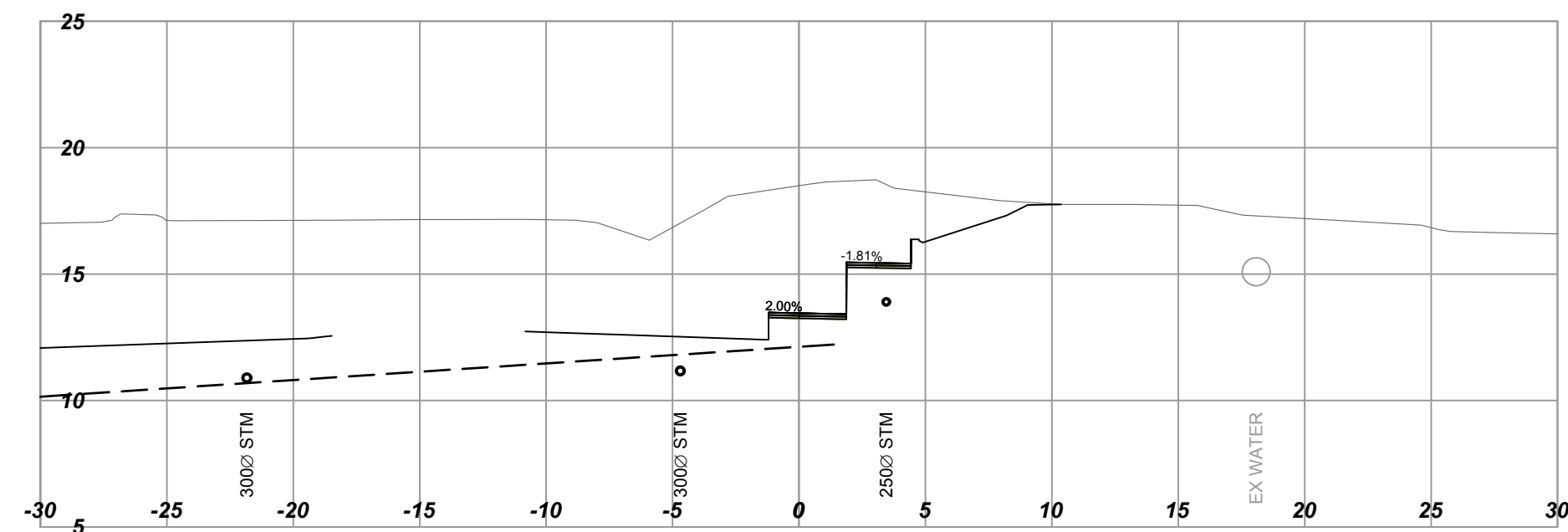
L70  
Horizontal Scale - 1:250  
Vertical Scale - 1:250  
Station: 70+80.000



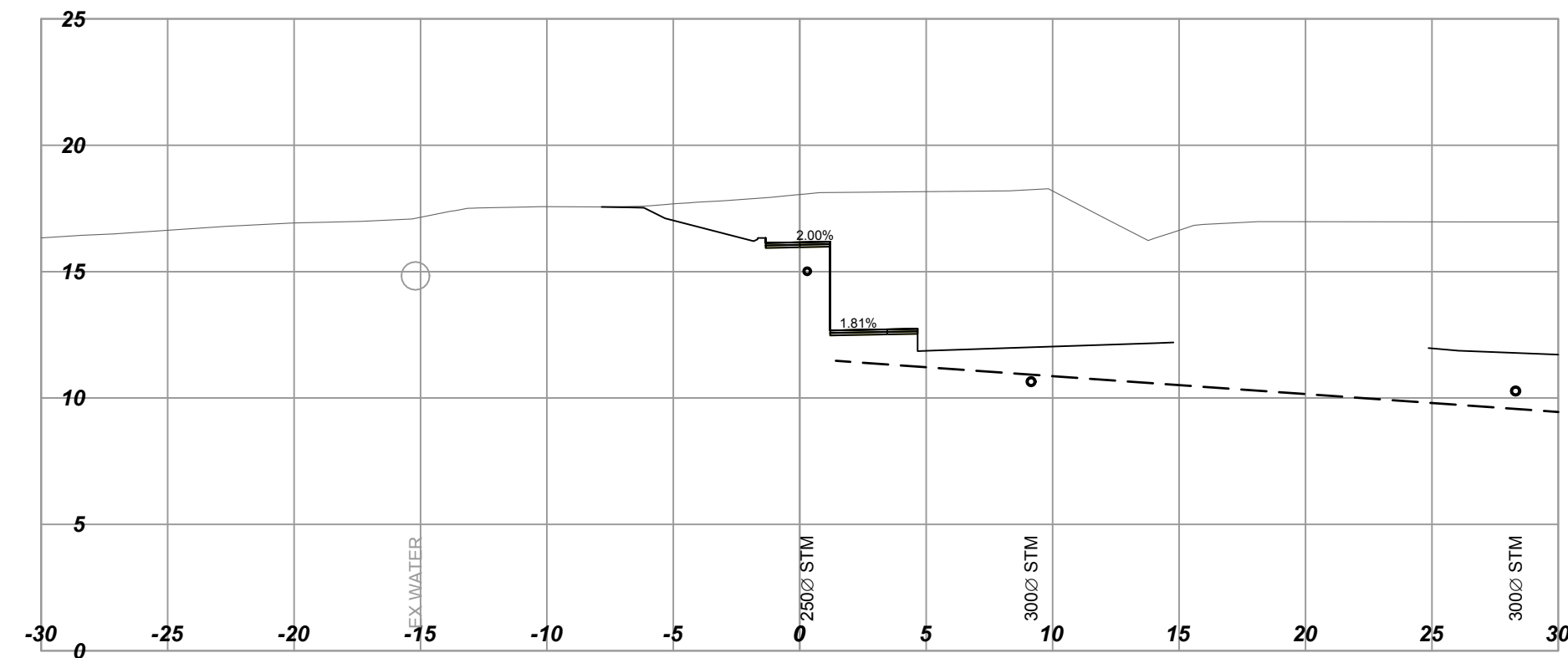
L70  
Horizontal Scale - 1:250  
Vertical Scale - 1:250  
Station: 70+30.000



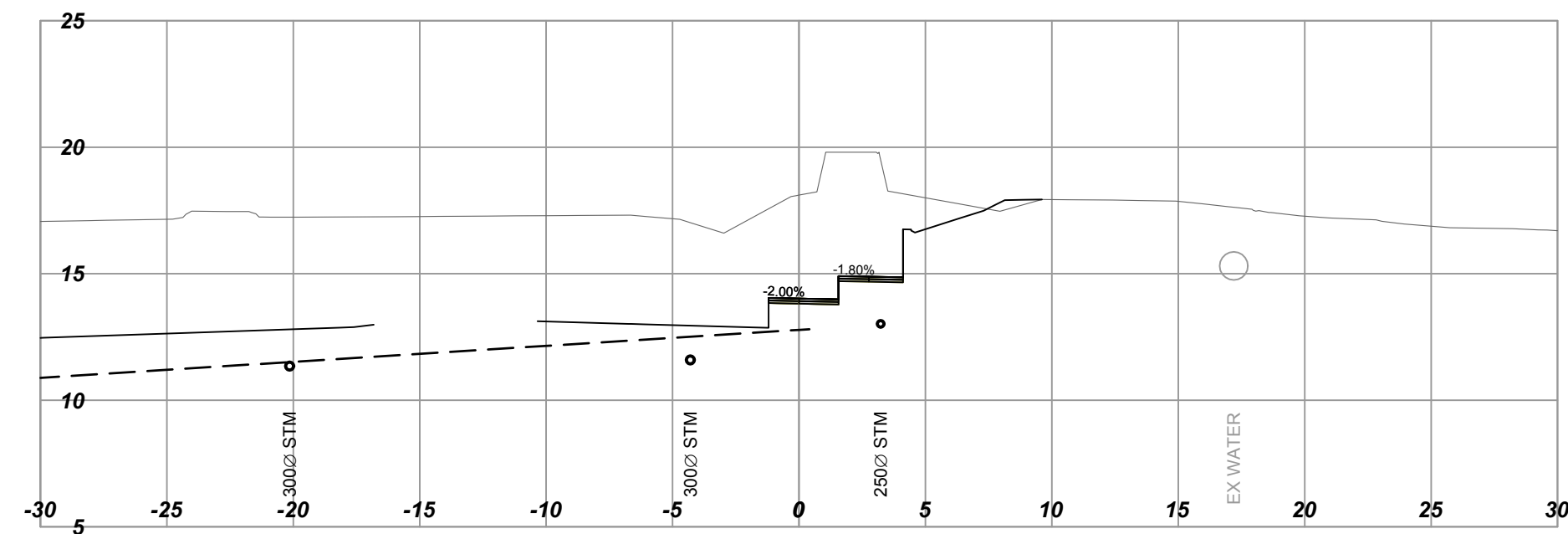
L70  
Horizontal Scale - 1:250  
Vertical Scale - 1:250  
Station: 70+70.000



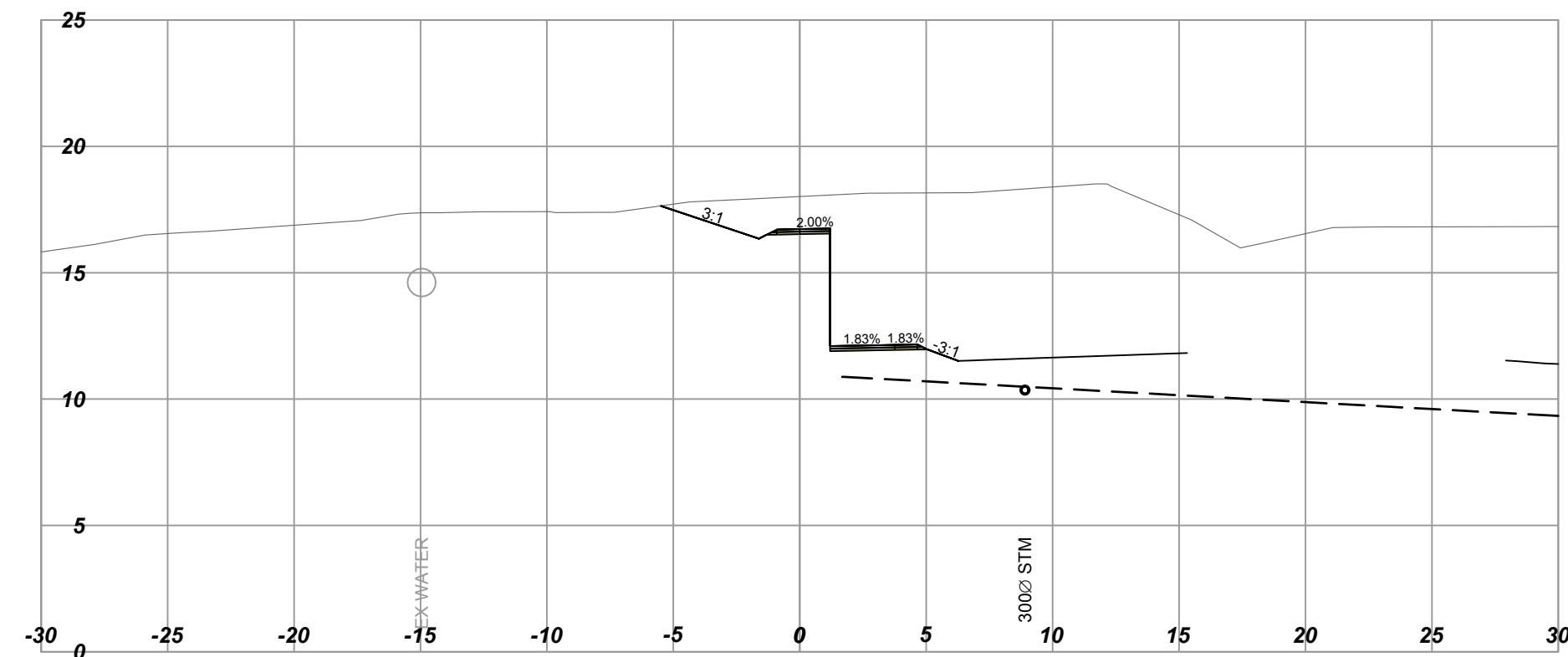
L70  
Horizontal Scale - 1:250  
Vertical Scale - 1:250  
Station: 70+20.000



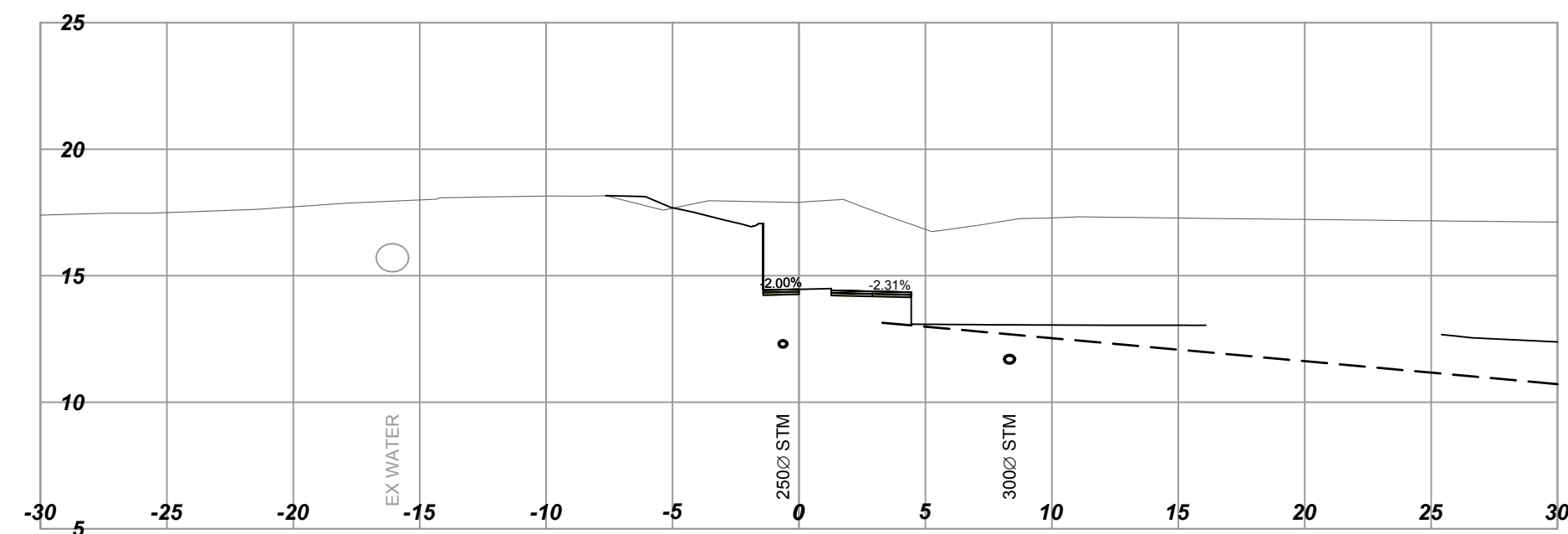
L70  
Horizontal Scale - 1:250  
Vertical Scale - 1:250  
Station: 70+60.000



L70  
Horizontal Scale - 1:250  
Vertical Scale - 1:250  
Station: 70+10.000



L70  
Horizontal Scale - 1:250  
Vertical Scale - 1:250  
Station: 70+50.000



**URBAN**  
systems

SCALE 0 2 1:250 12m		CAD FILENAME 1961034802_Contract 2 L70_XSEC.dwg	DATE 2016-10-31
REV	DATE	REVISIONS	SIGNATURE

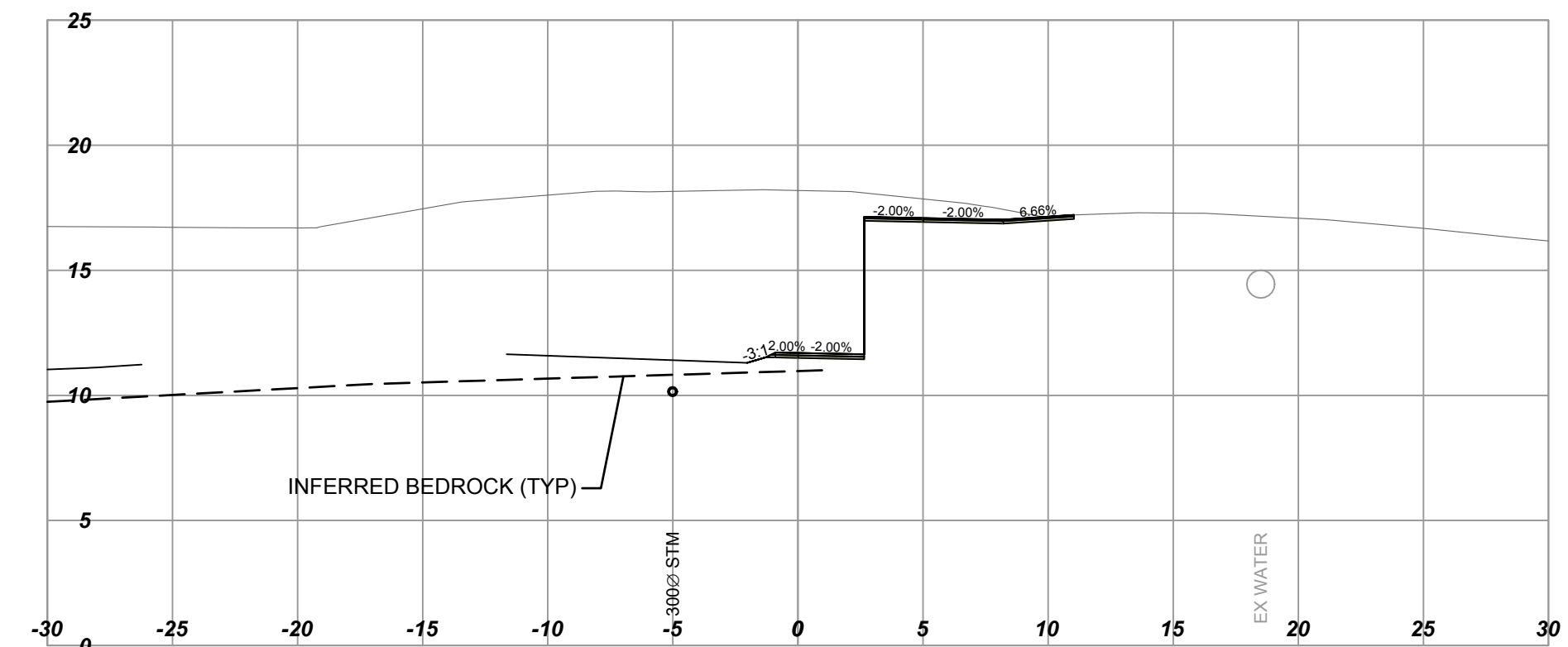
**BRITISH COLUMBIA**  
MINISTRY OF TRANSPORTATION AND INFRASTRUCTURE  
HIGHWAY ENGINEERING  
SOUTH COAST BRANCH

TIM BLACKBURN, P.Eng  
SENIOR DESIGNER  
DATE 2017-02-20

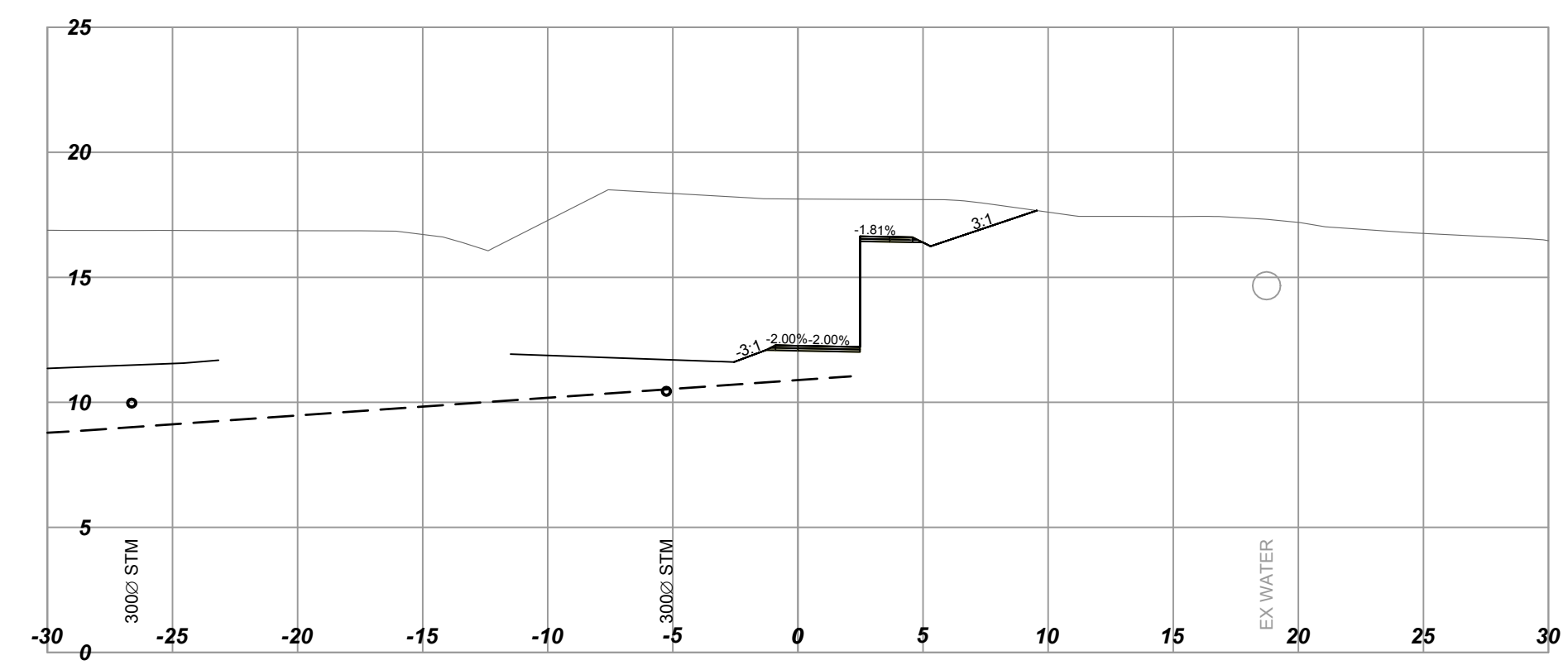
DESIGNED R. MOOTGOOSAMY DATE 2017-02-08  
QUALITY CONTROL J. BORCH DATE 2017-02-15  
QUALITY ASSURANCE G. SMITH DATE 2017-02-17  
DRAWN B. THOMAS DATE 2017-02-13

<b>CROSS SECTIONS</b>			
HIGHWAY 1 - ADMIRALS / MCKENZIE INTERCHANGE			
L70 - PEDESTRIAN RAMP STA. 70+10 TO STA. 70+80			
FILE NUMBER 1961.0348.02	PROJECT NUMBER 16606-0002	REG R1	DRAWING NUMBER L70-XS-01


L70  
Horizontal Scale - 1:250  
Vertical Scale - 1:250  
Station: 71+00.000



L70  
Horizontal Scale - 1:250  
Vertical Scale - 1:250  
Station: 70+90.000



SCALE 0 2 1:250 12m		CAD FILENAME 1961034802_Contract 2 L70 XSEC.dwg	DATE 2016-10-31
REV	DATE	REVISIONS	SIGNATURE


**BRITISH COLUMBIA**  
 MINISTRY OF TRANSPORTATION AND INFRASTRUCTURE  
 HIGHWAY ENGINEERING  
 SOUTH COAST BRANCH

DESIGNED R. MOOTGOOSAMY DATE 2017-02-08  
 QUALITY CONTROL J. BORCH DATE 2017-02-15  
 QUALITY ASSURANCE G. SMITH DATE 2017-02-17  
 DRAWN B. THOMAS DATE 2017-02-13

TIM BLACKBURN, P.Eng  
 SENIOR DESIGNER  
 DATE 2017-02-20

<b>CROSS SECTIONS</b>			
HIGHWAY 1 - ADMIRALS / MCKENZIE INTERCHANGE			
L70 - PEDESTRIAN RAMP STA. 70+90 TO STA. 71+00			
FILE NUMBER 1961.0348.02	PROJECT NUMBER 16606-0002	REV R1	DRAWING NUMBER L70-XS-02