

Detailed timber evaluation table - Othello Road and Tunnels Road

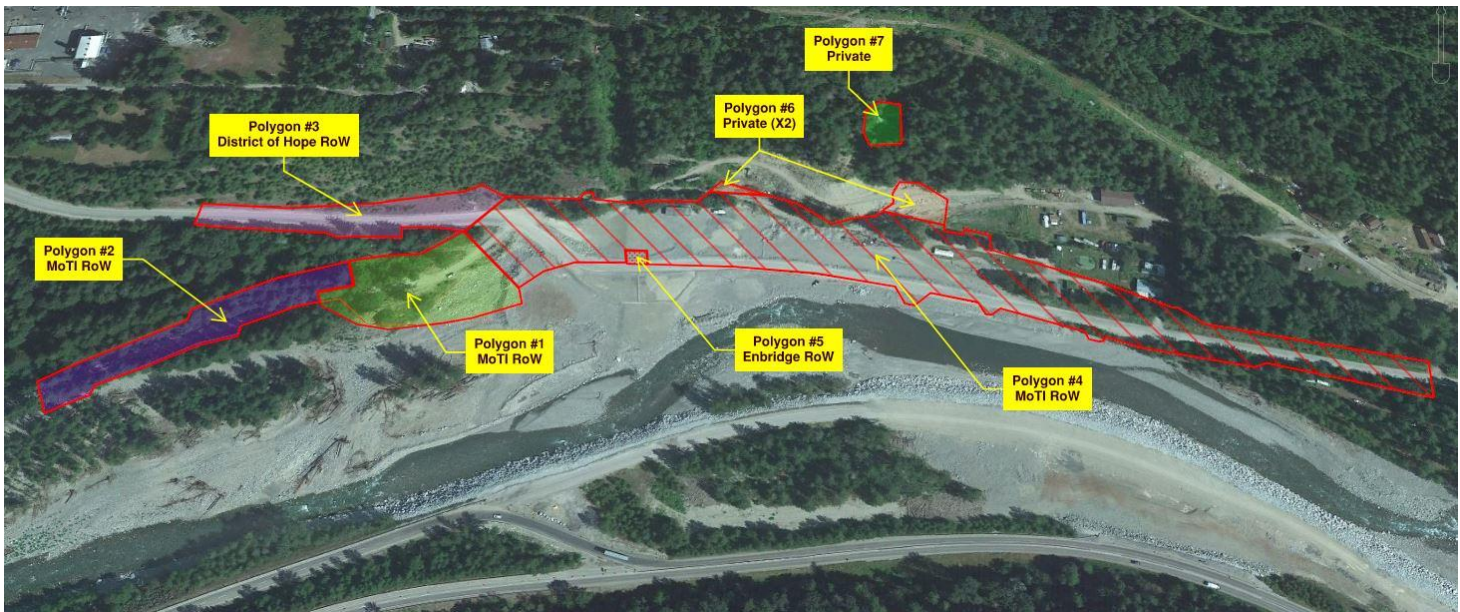
Date: August 8th, 2023

ID polygon (see the key map)	Ownership	Overall stand composition (% mature trees)	Height class (m)	Median HtC (m)	Estimated # of trees		DBH (cm)	Estimated Volume (m3)	
					Sp	#		Gross	Merch
Polygon #1	MoTI	Fd75%Mb15%Dr5%Ac5%	10-20	15	Fd	2	30	0.6	0.4
		Trees located in the rd RoW and natural area.	20-30	25	Fd	4	70	9.5	7.6
			30-40	35	Fd	4	90	21.3	18.1
		Two "veteran trees" located between the road and the creek.	40-50	45	Fd	2	150	34.8	27.9
			10-20	15	Mb	14	30	4.2	2.1
			20-30	25	Mb	1	50	1.3	0.8
			10-20	15	Dr	4	24	0.8	0.4
			20-30	25	Dr	2	40	1.7	0.9
			20-30	25	Ac	3	50	3.9	2.7
Notes:	Totals	n/a	n/a	n/a	n/a	36	n/a	78.2	60.9
ID polygon (see the key map)	Ownership	Overall stand composition (% mature trees)	Height class (m)	Median HtC (m)	Estimated # of trees		DBH (cm)	Estimated Volume (m3)	
					Sp	#		Gross	Merch
Polygon #2	MoTI	Fd80%Mb15%Dr5%	10-20	15	Fd	3	30	0.9	0.5
		Trees natural regenerated along the road RoW	20-30	25	Fd	8	50	10.4	8.3
			20-30	25	Mb	4	50	5.2	3.1
			10-20	15	Dr	3	24	0.6	0.2
Notes:	Totals	n/a	n/a	n/a	n/a	18	n/a	17.1	12.2
ID polygon	Ownership	Overall stand composition (% mature trees)	Height class (m)	Median HtC (m)	Estimated # of trees		DBH (cm)	Estimated Volume (m3)	
					Sp	#		Gross	Merch
Polygon #3	District of Hope	No mature trees located in this area. Juvenile FD90%Mb10%	0-10	5	Fd	n/a	12	0.0	0.0
			0-10	5	Mb	n/a	10	0.0	0.0
Notes:	Totals	n/a	n/a	n/a	n/a	0	n/a	0.0	0.0
ID polygon	Ownership	Overall stand composition (% mature trees)	Height class (m)	Median HtC (m)	Estimated # of trees		DBH (cm)	Estimated Volume (m3)	
					Sp	#		Gross	Merch
Polygon #4	MoTI	Ac50%Mb40%Ep10%	10-20	15	Ac	2	24	0.4	0.1
		Trees natural regenerated along the road RoW	20-30	25	Ac	1	50	1.3	0.3
			20-30	25	Mb	3	40	2.6	1.3
			10-20	15	Ep	1	30	0.3	0.0
			10-20	15	Cw	2	40	1.0	0.3
Notes:	Totals	n/a	n/a	n/a	n/a	9	n/a	5.6	2.0
ID polygon	Ownership	Overall stand composition (% mature trees)	Height class (m)	Median HtC (m)	Estimated # of trees		DBH (cm)	Estimated Volume (m3)	
					Sp	#		Gross	Merch
Polygon #5	Enbridge RoW	No trees. Disturbed, gravel area.	n/a	n/a	n/a	0	n/a	0.0	0.0
Notes:	Totals	n/a	n/a	n/a	n/a	0	n/a	0.0	0.0
ID polygon	Ownership	Overall stand composition (% mature trees)	Height class (m)	Median HtC (m)	Estimated # of trees		DBH (cm)	Estimated Volume (m3)	
					Sp	#		Gross	Merch
Polygon #6	Private	Two polygons North and above the new road alignment with no trees.	n/a	n/a	n/a	0	n/a	0.0	0.0
Notes:	Totals	n/a	n/a	n/a	n/a	0	n/a	0.0	0.0

ID polygon	Ownership	Overall stand composition (% mature trees)	Height class (m)	Median HtC (m)	Estimated # of trees		DBH (cm)	Estimated Volume (m3)	
					Sp	#		Gross	Merch
Polygon #7	Private	Cw65%Fd30%Mb3%Ac2%Ep1%	10-20	15	Fd	1	30	0.3	0.2
		Natural stand on an unstable slope (trees with "pistol-but bases) extending on both sides of a ravine/seasonal stream.	20-30	25	Fd	6	50	7.8	6.2
			30-40	35	Fd	1	70	3.4	2.9
			40-50	45	Fd	1	90	7.0	5.3
			10-20	15	Cw	6	20	0.9	0.7
			20-30	25	Cw	9	50	11.7	9.4
			30-40	35	Cw	2	70	6.8	5.5
			20-30	25	Ac	1	40	0.9	0.6
			10-20	15	Ep	1	40	0.5	0.3
			10-20	15	Mb	1	30	0.3	0.0
Notes:	Totals	n/a	n/a	n/a	n/a	29	n/a	39.6	31.0

Species codes: Fd = Douglas fir / Cw = Western redcedar / Yc = Yellow cedar / Hw = Western hemlock / Bg = Grand fir / Mb Bigleaf maple / Dr = Red alder / Se = Engelmann spruce / Sw = White spruce / Ss = Sitka spruce / Pl = Lodgepole pine / Py Yellow pine (Ponderosa pine) / Pw = Western white pine / At = Trembling aspen / Ac = Black cottonwood.

Key map for polygon identification



Trees Proposed for Removal - Volume Analysis / Othello Rd & Tunnels Rd

July 28, 2023

Forest Inventory Zone (FIZ) A to L	Stand Age Type (M-mature) (I-immature)	Stump Height (m)	Top Diameter (cm)
"C" Dewdney	M	0.3	10
Remove trees from MoTI Polygon #1			
Species	Estimated number of trees	Est. Gross Volume (m3)	Merch. Volume m3
Douglas fir (Fd)	12	66.2	54.0
Bigleaf maple (Mb)	15	5.5	2.9
Red alder (Dr)	6	2.5	1.3
Black cottonwood (Ac)	3	3.9	2.7
Totals	36	78.1	60.9
Remove trees from MoTI Polygon #2			
Species	Estimated number of trees	Est. Gross Volume (m3)	Merch. Volume m3
Douglas fir (Fd)	11	11.3	8.8
Bigleaf maple (Mb)	4	5.2	3.1
Red alder (Dr)	3	0.6	0.2
Totals	18	17.1	12.1
Remove trees from MoTI Polygon #4			
Species	Estimated number of trees	Est. Gross Volume (m3)	Merch. Volume m3
Western red cedar (Cw)	2	1.0	0.3
Bigleaf maple (Mb)	3	2.6	1.3
Black cottonwood (Ac)	3	1.7	0.4
Paper birch (Ep)	1	0.3	0.0
Totals	9	5.6	2.0
Totals MoTI	63	100.8	75.0
Remove trees from PRIVATE Polygon #7			
Species	Estimated number of trees	Est. Gross Volume (m3)	Merch. Volume m3
Douglas fir (Fd)	9	18.5	14.6
Western red cedar (Cw)	17	19.4	15.6
Bigleaf maple (Mb)	1	0.3	0.0
Black cottonwood (Ac)	1	0.9	0.6
Paper birch (Ep)	1	0.5	0.3
Totals	29	39.6	31.1
Totals Private	29	39.6	31.1
Note: Polygons #3, 5, 6 have no mature trees proposed for harvesting.			

Specifications	Total Estimated Number of Remove Trees	Estimated Gross Volume Remove Trees (m3)	Estimated Merchantable Volume Remove trees (m3)
Deciduous MoTI	38	22.3	11.9
Conifer MoTI	25	78.5	63.1
Total MoTI	63	100.8	75.0
Deciduous Private	3	1.7	0.9
Conifer Private	26	37.9	30.2
Total Private	29	39.6	31.1
TOTAL GENERAL	92	140.4	106.1

