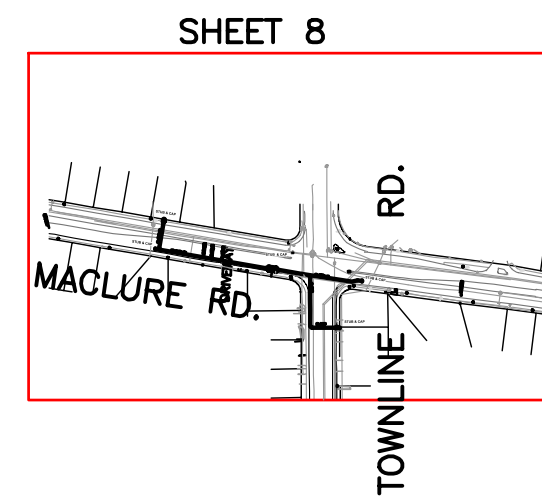
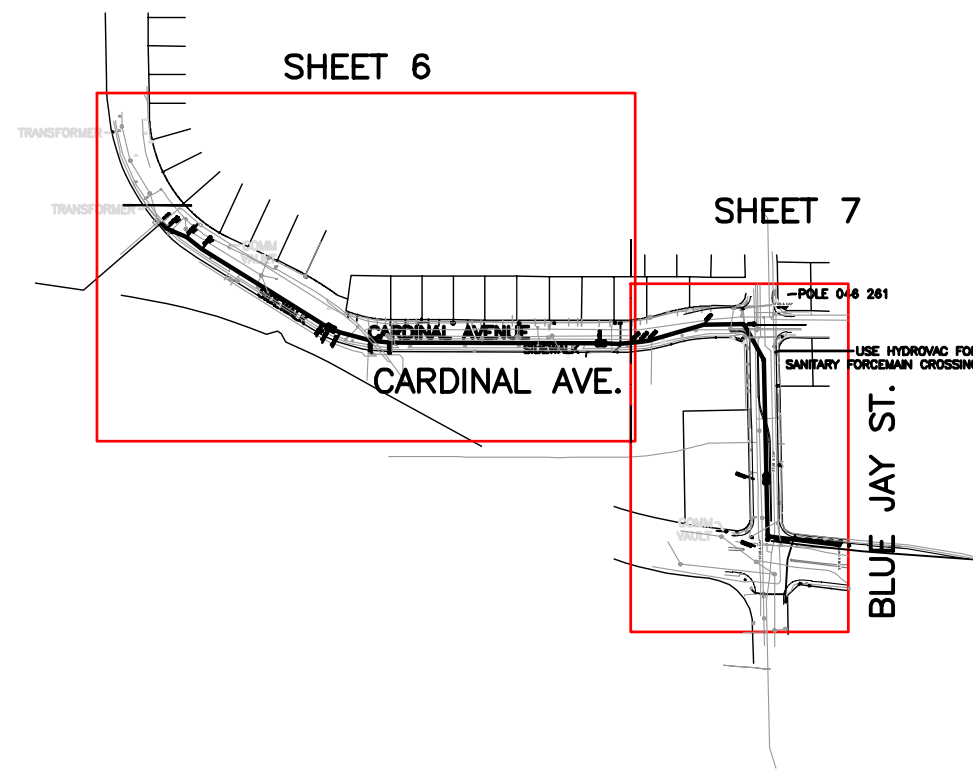
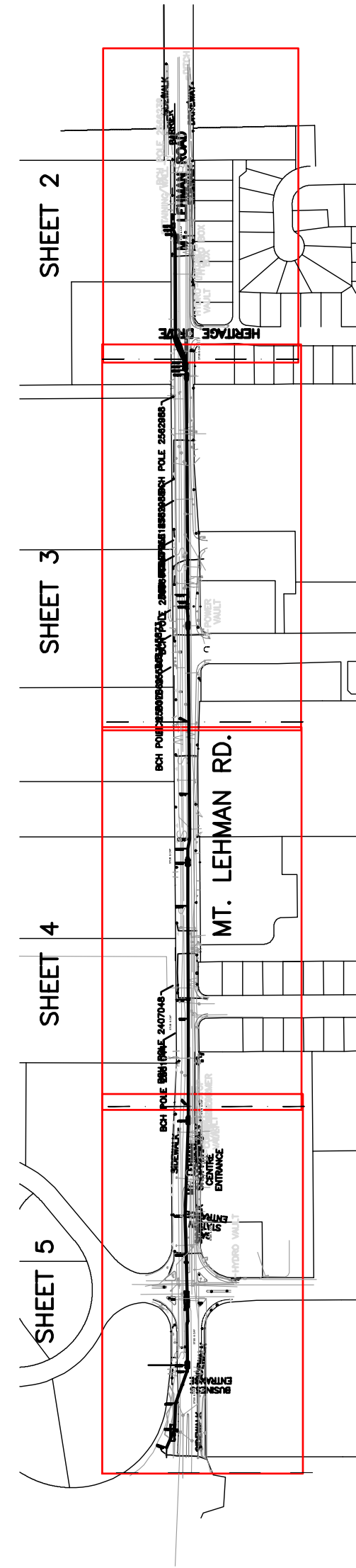


PROPOSED MANHOLES & DUCTBANK ALONG MT LEHMAN RD (NORTH OF HERITAGE DR TO HWY 1 OFF RAMP), ALONG CARDINAL AVE SOUTH OF WALMART TURNING RIGHT TO BLUE JAY ST UP TO MACLURE RD AND AT MACLURE RD/TOWNLINE RD INTERSECTION ABBOTSFORD, B.C.



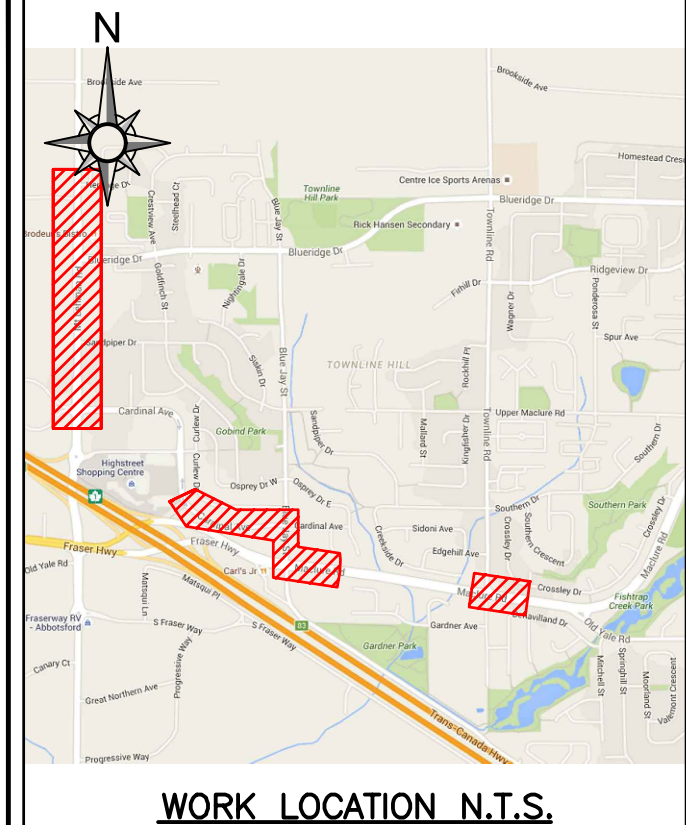
**ISSUED
RECORD
DRAWING**

REFERENCE STANDARDS:

- ES54 B3-01: LIGHTWEIGHT SERVICE BOX
- ES54 B4-02: 1232 PULLBOX SIDEWALK DUTY
- ES54 B5-02: 832 JUNCTION BOX SIDEWALK DUTY
- ES54 B7-01: 332 JUNCTION BOX SIDEWALK DUTY
- ES54 C1-05: THROUGH TYPE VAULT, DOUBLE ACCESS
- ES54 E4-01: ABOVE GROUND SWITCHGEAR, 4-WAY VAULT
- ES54 E7-01: LOW VOLTAGE ENCLOSURE (LVE)
- ES54 F1-01: 1PHS LPT PAD
- ES54 G2-01: DRAINAGE SYSTEM W/ BACKWATER VALVE
- ES54 H1-06: GENERAL TRENCHING DETAILS
- ES54 H1-07: GENERAL TRENCHING DETAILS - DEPTH
- ES54 H2-03: CONCRETE ENCASUREMENT - 125mm DUCT
- ES54 H2-04: MINIMUM STEEL REINFORCING DETAILS
- ES54 M1-01: PILASTER ON WOOD POLE
- ES54 R1-01: GROUNDING OF PAD EQUIP. IN PUBLIC
- ES54 R3-02: GROUNDING OF VAULT WITH INTERNAL GROUND

LIST OF SHEETS:

1. COVER SHEET & OVERVIEW
2. PLAN & PROFILE - MT LEHMAN RD
3. PLAN & PROFILE - MT LEHMAN RD
4. PLAN & PROFILE - MT LEHMAN RD
5. PLAN & PROFILE - MT LEHMAN RD
6. PLAN & PROFILE - CARDINAL AVE
7. PLAN & PROFILE - BLUE JAY ST
8. PLAN & PROFILE - MACLURE RD & TOWNLINE RD
9. TRENCH & TP DETAILS



WORK LOCATION N.T.S.

BC ONE CALL
CALL BEFORE YOU DIG
1-800-474-6886
CALL AT LEAST 3 FULL WORKING DAYS BEFORE YOU PLAN TO DIG

- CIVIL NOTES:**
1. BC HYDRO REPRESENTATIVE MUST BE NOTIFIED 48 HOURS PRIOR TO CONSTRUCTION.
 2. ALL WORK TO BE PERFORMED IN ACCORDANCE WITH CLASS OF WORK SPECIFICATION 1323 AND BC HYDRO UNDERGROUND DISTRIBUTION ENGINEERING STANDARDS SERIES ESS3 AND ESS4.
 3. ANY CHANGES NEED TO HAVE PRIOR APPROVAL OF BC HYDRO REPRESENTATIVE.
 4. ALL CONDUIT INSTALLATION FOR BC HYDRO ON PUBLIC OR PRIVATE PROPERTY SHOULD HAVE 0.9m COVER AND ANY FACTORY BEND MUST HAVE A MINIMUM RADIUS OF 0.9m.
 5. ALL UTILITIES (EXCEPT TELUS) MUST MAINTAIN A 0.3m HORIZONTAL AND 0.3m VERTICAL SEPARATION FROM BC HYDRO DUCT UNLESS DIRECTED OTHERWISE BY BC HYDRO REPRESENTATIVE.
 6. TRANSFORMER MUST BE A MINIMUM OF 1.5m BEHIND NON-MOUNTABLE CURB OR PROTECTED. FINAL NUMBER AND LOCATION OF PROTECTION POSTS TO BE DETERMINED IN THE FIELD BY BC HYDRO REPRESENTATIVE.
 7. OTHER UTILITIES SHOWN ON THE CIVIL DRAWING ARE FOR REFERENCE ONLY. PROVE LOCATION OF ALL UTILITIES IN THE WORK AREA BEFORE CONSTRUCTION. FOR CURRENT INFORMATION CONTACT BC ONE CALL.
 8. FOR TRANSFORMER PAD COUNTERPOISE CLEARANCES TO OTHER UTILITIES AND UNDERGROUND CONDUCTIVE SURFACES, SEE ESS4.
 9. ALL OFFSETS INDICATE CENTERLINE OF BC HYDRO PLANT.
 10. MINIMUM OFFSET FOR BC HYDRO DUCTS, IN JOINT TRENCH, FROM PROPERTY LINE IS 1.2m, UNLESS OTHERWISE NOTED.
 11. STUB SERVICE DUCT 1.0m FROM PROPERTY CORNER AND 1.0m INTO THE LOT.
 12. METRES EXPRESSED IN DECIMALS, MILLIMETRES IN WHOLE NUMBERS.

CUSTOM NOTES HERE IF REQUIRED

1. COORDINATE ANY DISRUPTION OF TRAFFIC SIGNAL DETECTION LOOPS WITH THE CITY OF ABBOTSFORD. CITY TO MAKE REPAIRS IF NEEDED.
2. CONTACT THE CITY OF ABBOTSFORD AFTER FINAL PAVING TO RE-PAIN ANY TRAFFIC LINES.

- CIVIL PLAN LEGEND:**
- PROPOSED DUCT
 - - - EXISTING DUCT
 - FIELD COMPLETED DUCT
 - SERVICE BOX
 - TERMINAL POLE
 - LOW PROFILE TRANSFORMER (LPT-PYRAMID PAD)
 - LOW PROFILE TRANSFORMER (LPT)
 - PAD MOUNT TRANSFORMER (PMT)
 - 3# & 1# JUNCTION & PULL BOXES (332, 832, 832 & 1232)
 - PRECAST MANHOLE
 - VISTA SWITCH SUBMERSIBLE (VSWB)
 - VISTA SWITCH ABOVE GROUND (VSWA)
- REFER TO ESS3 AND ESS4 UNDERGROUND STANDARDS**

CSA S250 ACCURACY NAD 83 - 10 UTM
BASE ACCURACY LEVEL: 4 +/- 1000 mm
ASB ACCURACY LEVEL: 4 +/- 1000 mm

VER 1.72 FEBRUARY 01, 2016

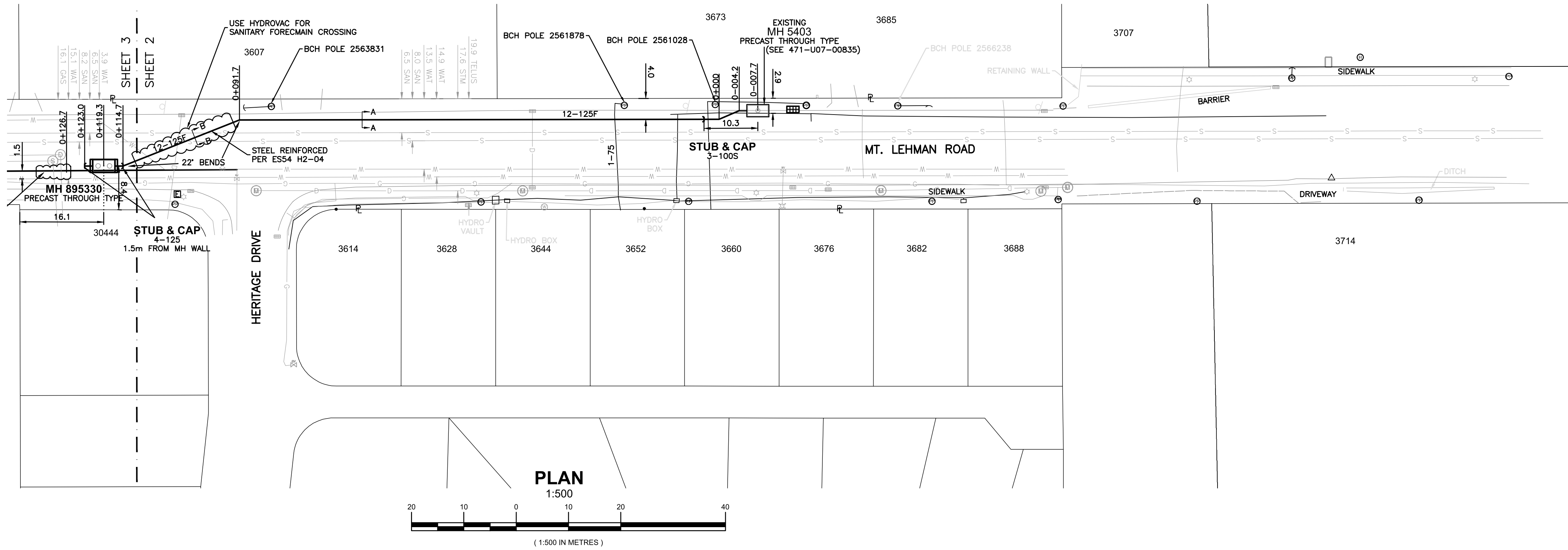
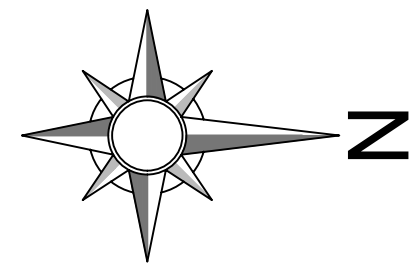
| REF# | DRAWING NUMBER | NO | REMARKS | DATE | DESIGNED | INDEP CHK | DFTG CHK | INSP | REV | ACPT |
|------|----------------|----|---|------------|-----------|-----------|----------|------|-----|------|
| 5 | ---- | | | | | | | | | |
| 4 | ---- | | | | | | | | | |
| 3 | ---- | 3 | DESIGN: 0003858310 - ISSUED RECORD DRAWING (FINAL INSPCT. 2022-09-14) | 2022-10-05 | MMASSOLIN | LP | AC | MG | | |
| 2 | ---- | 2 | DESIGN: 0003858310 - ISSUED FOR CONSTRUCTION | 2020-01-03 | RENNIS | | CM | | | |
| 1 | ---- | 1 | DESIGN: 0003858310 - SCOPE CHANGE/RE-DESIGN | 2019-12-16 | RENNIS | LP | CM | | | |
| | | | | | | | | | | |
| | | | | | | | | | | |

| | | | |
|-----------|------------------|---------|------------|
| DSGN | ASANTOS/RENNIS | BCH MAP | ---- |
| INDEP CHK | ---- | DESIGN# | 0003858310 |
| DFTG CHK | CMORROW/LPOIRIER | WO# | 02100490 |
| DFTG CHK | BBAKER/CMORROW | DESIGN# | 000 |
| INSP | MCUAJARDO | WO# | 0 |
| REV | ---- | | |
| ACPT | ---- | | |

DATE 2016-04-06 GRID NO ---- DWG NO 471-U07-03175 SHEET 1 of 9 SIZE D R 3

BC Hydro T&D ENGINEERING & DESIGN
FRASER VALLEY EAST
ABBOTSFORD
UNDERGROUND DUCT & STRUCTURES FOR
THREE NEW FEEDERS @
MT LEHMAN SUBSTATION
ABBOTSFORD, BC

NOT TO BE REPRODUCED WITHOUT THE PERMISSION OF BC HYDRO



BC ONE CALL
 CALL BEFORE YOU DIG
 1-800-474-6886
 CALL AT LEAST 3 FULL WORKING DAYS BEFORE YOU PLAN TO DIG

- CIVIL NOTES:**
1. BC HYDRO REPRESENTATIVE MUST BE NOTIFIED 48 HOURS PRIOR TO CONSTRUCTION.
 2. ALL WORK TO BE PERFORMED IN ACCORDANCE WITH CLASS OF WORK SPECIFICATION 1323 AND BC HYDRO UNDERGROUND DISTRIBUTION ENGINEERING STANDARDS SERIES ES53 AND ES54.
 3. ANY CHANGES NEED TO HAVE PRIOR APPROVAL OF BC HYDRO REPRESENTATIVE.
 4. ALL CONDUIT INSTALLATION FOR BC HYDRO ON PUBLIC OR PRIVATE PROPERTY SHOULD HAVE 0.9m COVER AND ANY FACTORY BEND MUST HAVE A MINIMUM RADIUS OF 0.9m.
 5. ALL UTILITIES (EXCEPT TELUS) MUST MAINTAIN A 0.9m HORIZONTAL AND 0.3m VERTICAL SEPARATION FROM BC HYDRO DUCT UNLESS DIRECTED OTHERWISE BY BC HYDRO REPRESENTATIVE.
 6. TRANSFORMER MUST BE A MINIMUM OF 1.5m BEHIND NON-MOUNTABLE CURB OR PROTECTED. FINAL NUMBER AND LOCATION OF PROTECTION POSTS TO BE DETERMINED IN THE FIELD BY BC HYDRO REPRESENTATIVE.
 7. OTHER UTILITIES SHOWN ON THE CIVIL DRAWING ARE FOR REFERENCE ONLY. PROVE LOCATION OF ALL UTILITIES IN THE WORK AREA BEFORE CONSTRUCTION. FOR CURRENT INFORMATION CONTACT BC ONE CALL.
 8. FOR TRANSFORMER PAD COUNTERPOISE CLEARANCES TO OTHER UTILITIES AND UNDERGROUND CONDUCTIVE SURFACES, SEE ES54.
 9. ALL OFFSETS INDICATE CENTERLINE OF BC HYDRO PLANT.
 10. MINIMUM OFFSET FOR BC HYDRO DUCTS, IN JOINT TRENCH, FROM PROPERTY LINE IS 1.2m, UNLESS OTHERWISE NOTED.
 11. STUB SERVICE DUCT 1.0m FROM PROPERTY CORNER AND 1.0m INTO THE LOT.
 12. METRES EXPRESSED IN DECIMALS, MILLIMETRES IN WHOLE NUMBERS.

CUSTOM NOTES HERE IF REQUIRED

- CIVIL PLAN LEGEND:**
- PROPOSED DUCT
 - EXISTING DUCT
 - FIELD COMPLETED DUCT
 - SERVICE BOX
 - TERMINAL POLE
 - LOW PROFILE TRANSFORMER (LPT-PYRAMID PAD)
 - LOW PROFILE TRANSFORMER (LPT)
 - PAD MOUNT TRANSFORMER (PMT)
 - 3# & 1# JUNCTION & PULL BOXES (332, 632, 832 & 1232)
 - PRECAST MANHOLE
 - VISTA SWITCH SUBMERSIBLE (VSWB)
 - VISTA SWITCH ABOVE GROUND (VSWA)
- REFER TO ES53 AND ES54 UNDERGROUND STANDARDS

CSA S250 ACCURACY NAD 83 - 10 UTM
 BASE ACCURACY LEVEL: 4 +/- 1000 mm
 ASB ACCURACY LEVEL: 4 +/- 1000 mm

ISSUED RECORD DRAWING

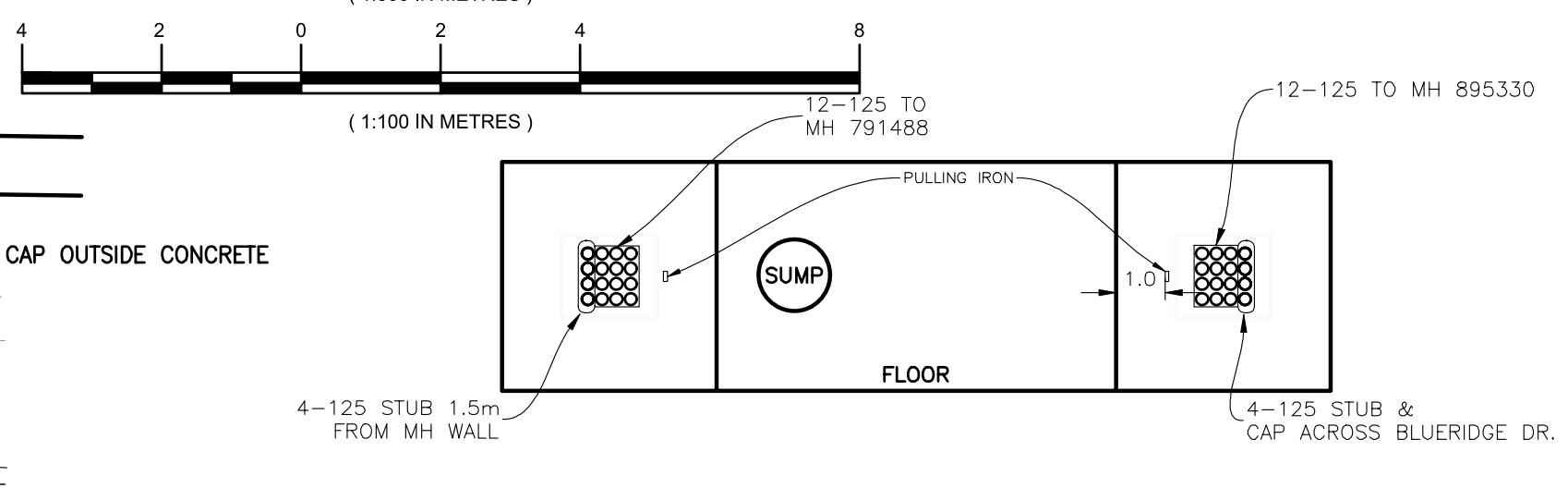
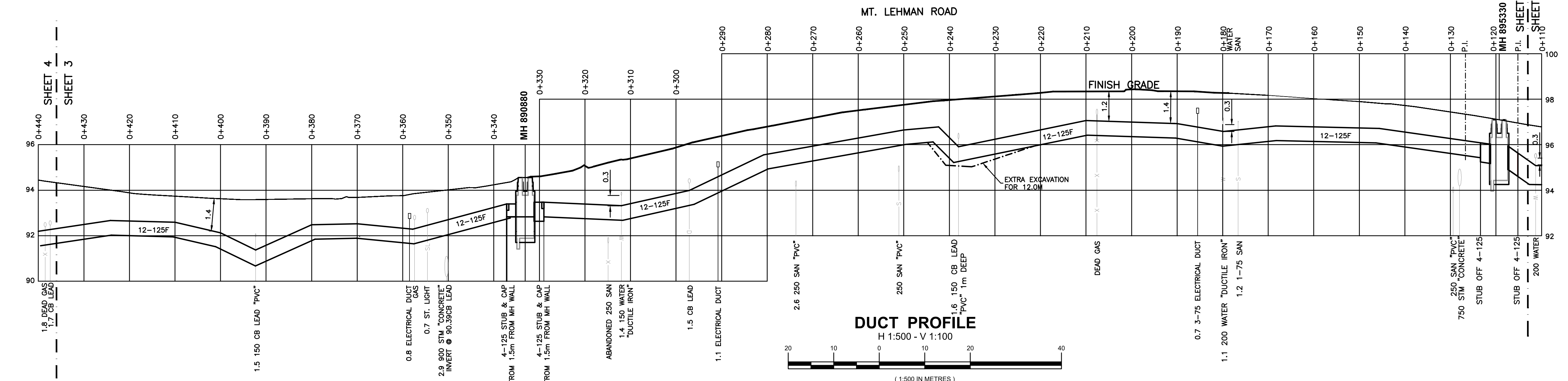
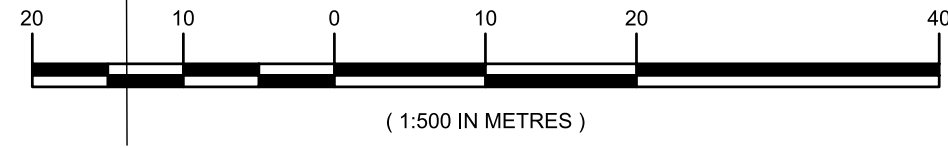
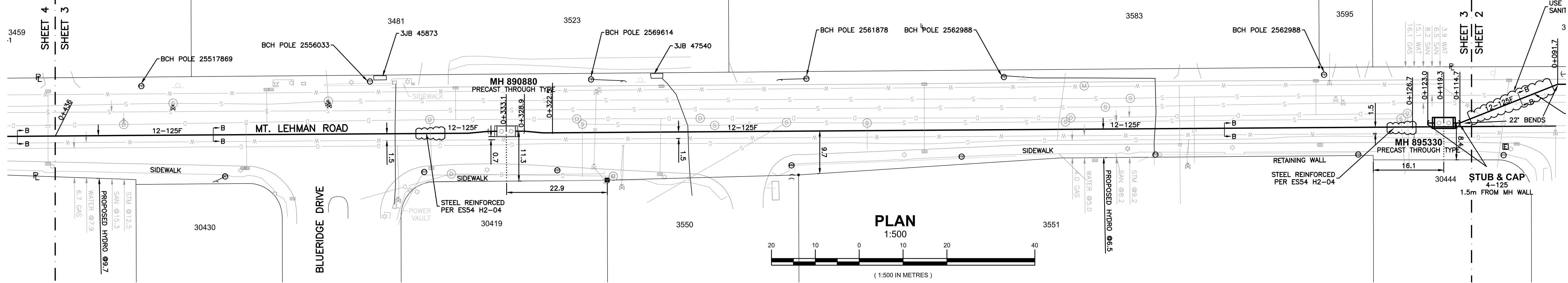
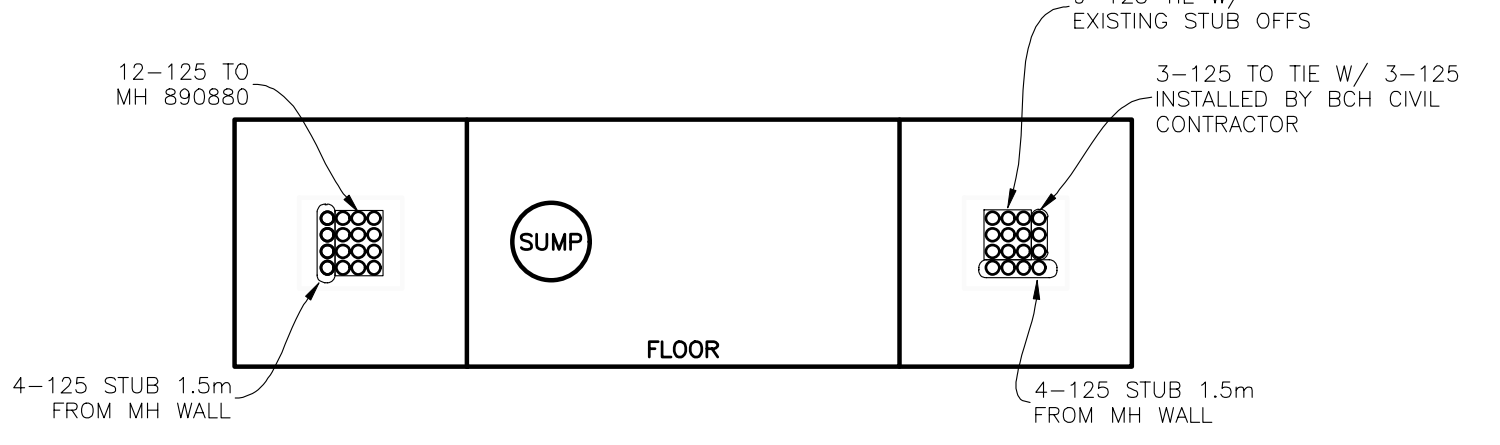
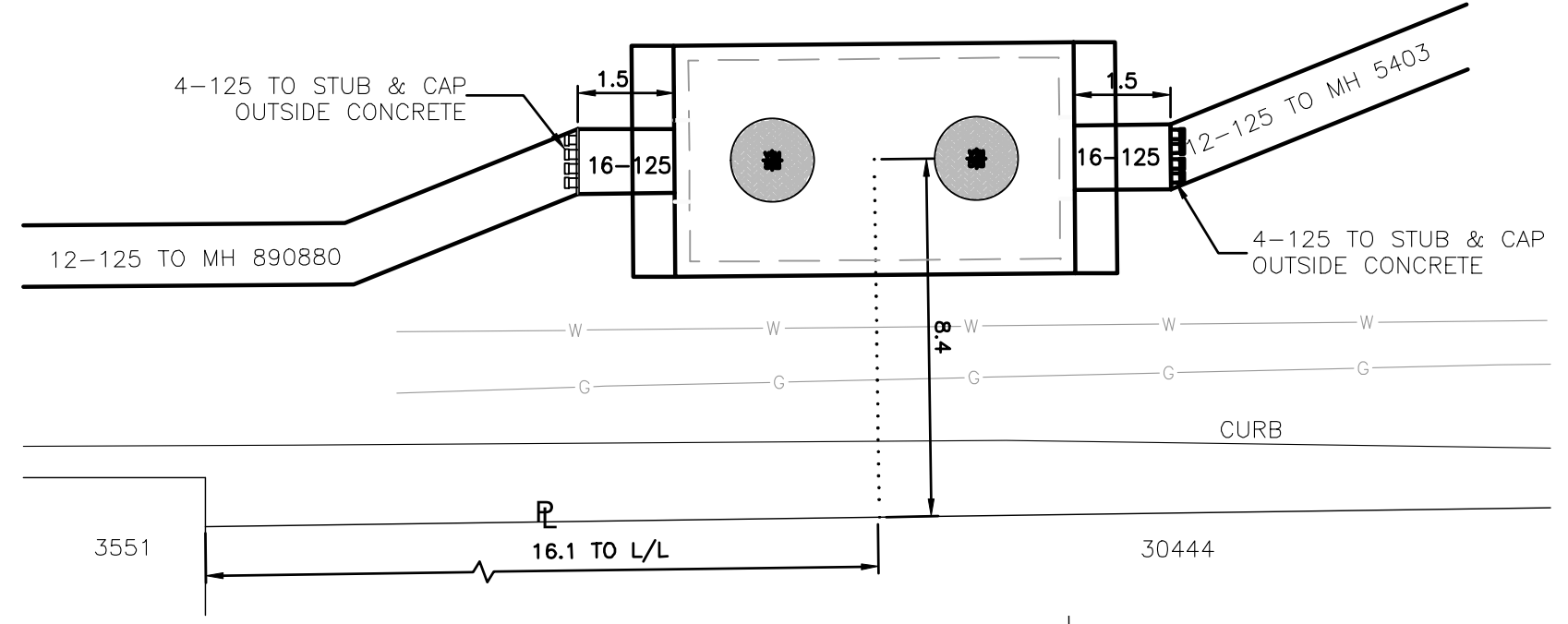
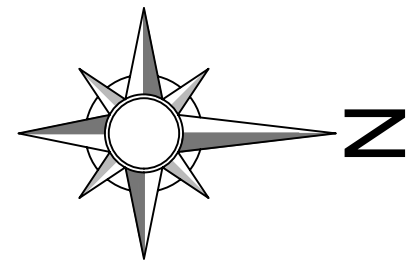
| REF# | DRAWING NUMBER | NO | REMARKS | DATE | DESIGNED | INDEP CHK | DFTG CHK | INSP | REV | ACPT |
|------|----------------|----|---|------------|-----------|-----------|----------|------|-----|------|
| 5 | ---- | | | | | | | | | |
| 4 | ---- | | | | | | | | | |
| 3 | ---- | 3 | DESIGN: 0003858310 - ISSUED RECORD DRAWING (FINAL INSPCT. 2022-09-14) | 2022-10-05 | MMASSOLIN | LP | AC | KG | | |
| 2 | ---- | 2 | DESIGN: 0003858310 - ISSUED FOR CONSTRUCTION | 2020-01-03 | RENNIS | CM | | | | |
| 1 | ---- | 1 | DESIGN: 0003858310 - SCOPE CHANGE/RE-DESIGN | 2019-12-13 | RENNIS | LP | CM | | | |
| REF# | DRAWING NUMBER | NO | REMARKS | DATE | DESIGNED | INDEP CHK | DFTG CHK | INSP | REV | ACPT |
| | | | | | | | | | | |

| | | | |
|-----------|------------------|---------|------------|
| DSGN | ASANTOS/RENNIS | BCH MAP | ---- |
| INDEP CHK | ---- | DESIGN# | 0003858310 |
| DFTG | CMORROW/LPOIRIER | WO# | 02100490 |
| DFTG CHK | BBAKER/CMORROW | DESIGN# | 000 |
| INSP | MCUAJARDO | WO# | 0 |
| REV | ---- | | |
| ACPT | ---- | | |

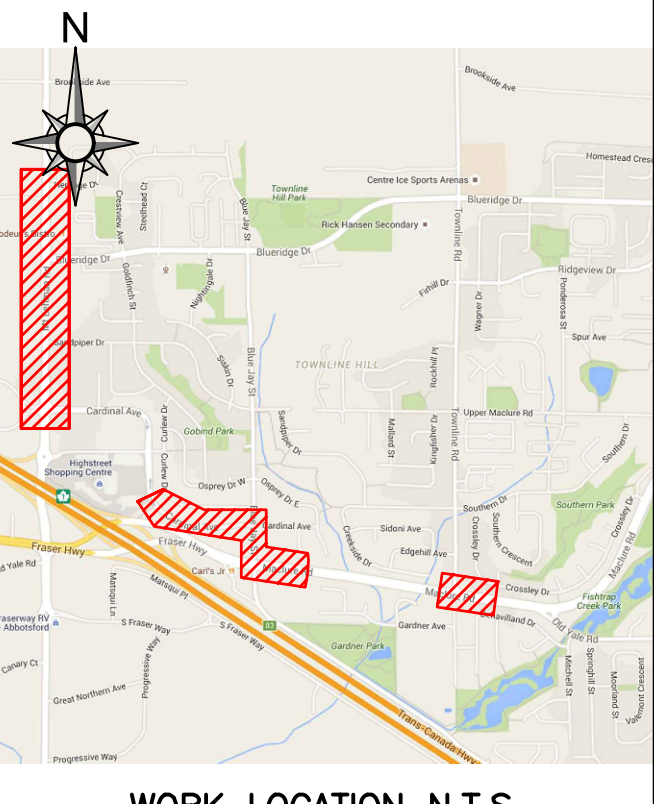
BC Hydro T&D ENGINEERING & DESIGN

FRASER VALLEY EAST
 ABBOTSFORD
 UNDERGROUND DUCT & STRUCTURES FOR
 THREE NEW FEEDERS @
 MT LEHMAN SUBSTATION
 ABBOTSFORD, BC

DATE: 2016-04-06 GRID NO: ---- DWG NO: 471-U07-03175 SHEET 2 OF 9 SIZE D R 3



MH 890880 DETAIL AND SPLAT THROUGH TYPE DUAL PORT ES54 C1-05 N.T.S.



WORK LOCATION N.T.S. BC ONE CALL CALL BEFORE YOU DIG 1-800-474-6886 CALL AT LEAST 3 FULL WORKING DAYS BEFORE YOU PLAN TO DIG

- CIVIL NOTES: 1. BC HYDRO REPRESENTATIVE MUST BE NOTIFIED 48 HOURS PRIOR TO CONSTRUCTION. 2. ALL WORK TO BE PERFORMED IN ACCORDANCE WITH CLASS OF WORK SPECIFICATION 1333 AND BC HYDRO UNDERGROUND DISTRIBUTION ENGINEERING STANDARDS SERIES ES53 AND ES54. 3. ANY CHANGES NEED TO HAVE PRIOR APPROVAL OF BC HYDRO REPRESENTATIVE. 4. ALL CONDUIT INSTALLATION FOR BC HYDRO ON PUBLIC OR PRIVATE PROPERTY SHOULD HAVE 0.9m COVER AND ANY FACTORY BEND MUST HAVE A MINIMUM RADIUS OF 0.9m. 5. ALL UTILITIES (EXCEPT TELUS) MUST MAINTAIN A 0.9m HORIZONTAL AND 0.3m VERTICAL SEPARATION FROM BC HYDRO DUCT UNLESS DIRECTED OTHERWISE BY BC HYDRO REPRESENTATIVE. 6. TRANSFORMER MUST BE A MINIMUM OF 1.5m BEHIND NON-MOUNTABLE CURB OR PROTECTED. FINAL NUMBER AND LOCATION OF PROTECTION POSTS TO BE DETERMINED IN THE FIELD BY BC HYDRO REPRESENTATIVE. 7. OTHER UTILITIES SHOWN ON THE CIVIL DRAWING ARE FOR REFERENCE ONLY. PROVE LOCATION OF ALL UTILITIES IN THE WORK AREA BEFORE CONSTRUCTION. FOR CURRENT INFORMATION CONTACT BC ONE CALL. 8. FOR TRANSFORMER PAD COUNTERPOISE CLEARANCES TO OTHER UTILITIES AND UNDERGROUND CONDUCTIVE SURFACES, SEE ES54. 9. ALL OFFSETS INDICATE CENTERLINE OF BC HYDRO PLANT. 10. MINIMUM OFFSET FOR BC HYDRO DUCTS, IN JOINT TRENCH, FROM PROPERTY LINE IS 1.2m, UNLESS OTHERWISE NOTED. 11. STUB SERVICE DUCT 1.0m FROM PROPERTY CORNER AND 1.5m INTO THE LOT. 12. METRES EXPRESSED IN DECIMALS, MILLIMETRES IN WHOLE NUMBERS.

CUSTOM NOTES HERE IF REQUIRED

- CIVIL PLAN LEGEND: PROPOSED DUCT (dashed line), EXISTING DUCT (solid line), FIELD COMPLETED DUCT (dotted line), SERVICE BOX, TERMINAL POLE, LOW PROFILE TRANSFORMER (LPT-PYRAMID PAD), LOW PROFILE TRANSFORMER (LPT), PAD MOUNT TRANSFORMER (PMT) 3# & 1# JUNCTION & PULL BOXES (332, 832, 832 & 1232), PRECAST MANHOLE, VISTA SWITCH SUBMERSIBLE (VSWB), VISTA SWITCH ABOVE GROUND (VSWA). REFER TO ES53 AND ES54 UNDERGROUND STANDARDS.

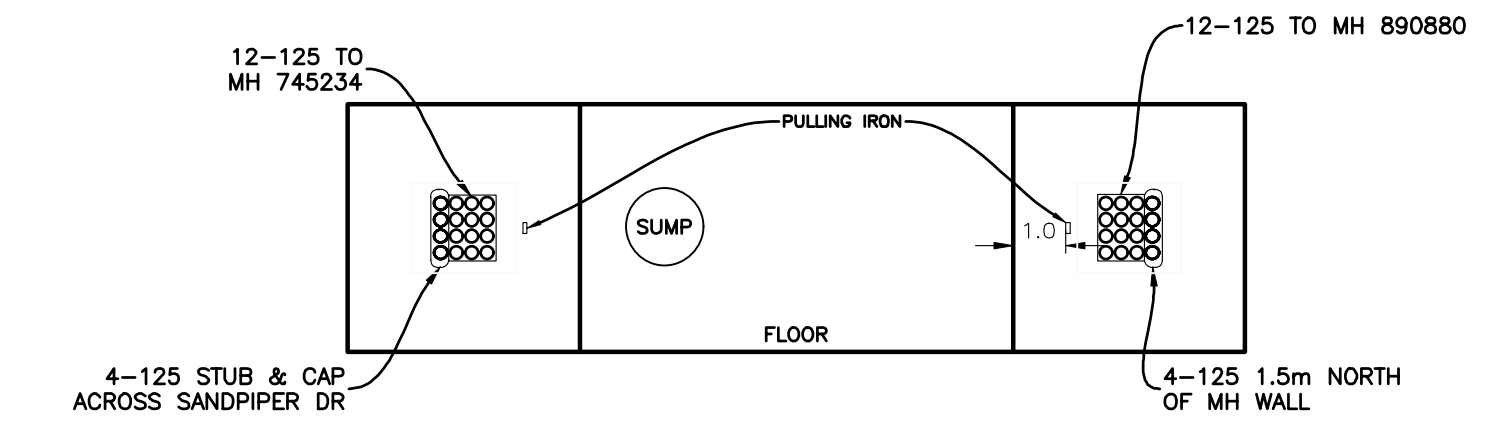
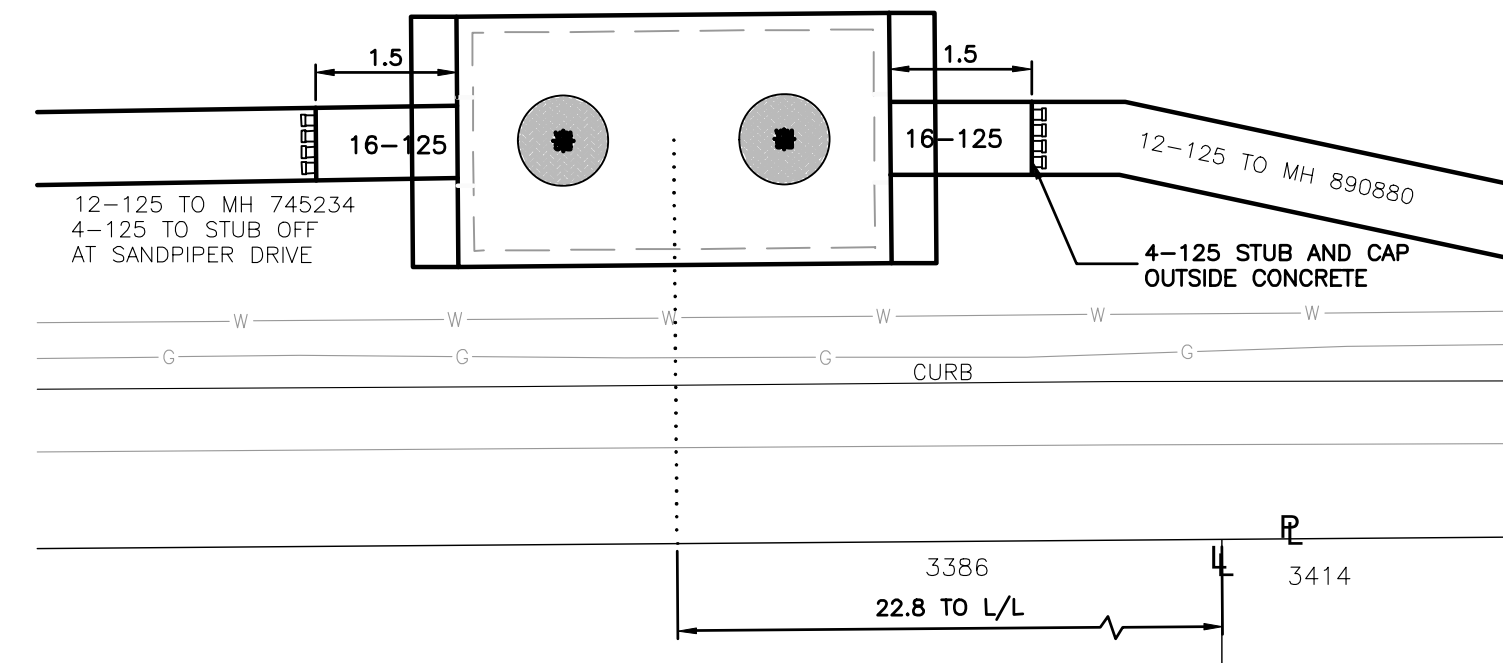
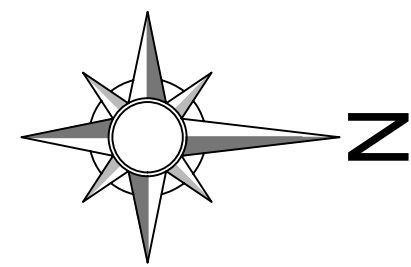
CSA S250 ACCURACY NAD 83 - 10 UTM BASE ACCURACY LEVEL: 4 +/- 1000 mm ASB ACCURACY LEVEL: 4 +/- 1000 mm

ISSUED RECORD DRAWING

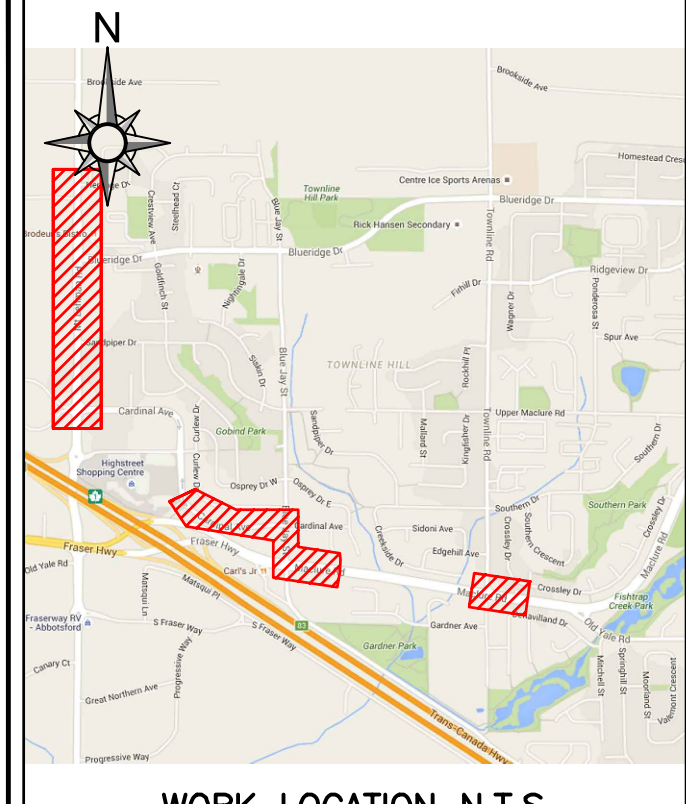
Table with 10 columns: REF#, DRAWING NUMBER, REMARKS, DATE, DESIGNED, INDEP CHK, DFTG CHK, INSP, REV, ACPT. Includes revision history and reference drawings.

Project information table including DSGN (ASANTOS/RENNIS), INDEP CHK, BCH MAP, DESIGN# (0003858310), WO# (02100490), DATE (2016-04-06), and BC Hydro T&D ENGINEERING & DESIGN logo.

VER 1.72 FEBRUARY 01, 2016



MH 791488 DETAIL AND SPLAT
THROUGH TYPE DUAL PORT
ES54 C1-05
N.T.S.



WORK LOCATION N.T.S.

BC ONE CALL

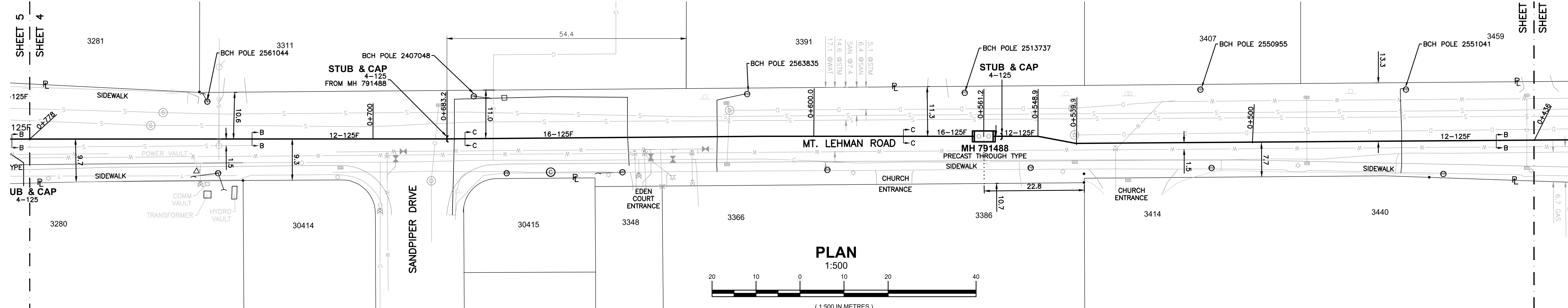
CALL BEFORE YOU DIG
1-800-474-6886
CALL AT LEAST 3 FULL
WORKING DAYS BEFORE
YOU PLAN TO DIG



CIVIL NOTES:

1. BC HYDRO REPRESENTATIVE MUST BE NOTIFIED 48 HOURS PRIOR TO CONSTRUCTION.
2. ALL WORK TO BE PERFORMED IN ACCORDANCE WITH CLASS OF WORK SPECIFICATION 1323 AND BC HYDRO UNDERGROUND DISTRIBUTION ENGINEERING STANDARDS SERIES ES53 AND ES54.
3. ANY CHANGES NEED TO HAVE PRIOR APPROVAL OF BC HYDRO REPRESENTATIVE.
4. ALL CONDUIT INSTALLATION FOR BC HYDRO ON PUBLIC OR PRIVATE PROPERTY SHOULD HAVE 0.9m COVER AND ANY FACTORY BEND MUST HAVE A MINIMUM RADIUS OF 0.9m.
5. ALL UTILITIES (EXCEPT TELLS) MUST MAINTAIN A 0.9m HORIZONTAL AND 0.3m VERTICAL SEPARATION FROM BC HYDRO DUCT UNLESS DIRECTED OTHERWISE BY BC HYDRO REPRESENTATIVE.
6. TRANSFORMER MUST BE A MINIMUM OF 1.5m BEHIND NON-MOUNTABLE CURB OR PROTECTED. FINAL NUMBER AND LOCATION OF PROTECTION POSTS TO BE DETERMINED IN THE FIELD BY BC HYDRO REPRESENTATIVE.
7. OTHER UTILITIES SHOWN ON THE CIVIL DRAWING ARE FOR REFERENCE ONLY. PROVE LOCATION OF ALL UTILITIES IN THE WORK AREA BEFORE CONSTRUCTION. FOR CURRENT INFORMATION CONTACT BC ONE CALL.
8. FOR TRANSFORMER PAD COUNTERPOISE CLEARANCES TO OTHER UTILITIES AND UNDERGROUND CONDUCTIVE SURFACES, SEE ES54.
9. ALL OFFSETS INDICATE CENTERLINE OF BC HYDRO PLANT.
10. MINIMUM OFFSET FOR BC HYDRO DUCTS, IN JOINT TRENCH, FROM PROPERTY LINE IS 1.2m, UNLESS OTHERWISE NOTED.
11. STUB SERVICE DUCT 1.0m FROM PROPERTY CORNER AND 1.0m INTO THE LOT.
12. METRES EXPRESSED IN DECIMALS, MILLIMETRES IN WHOLE NUMBERS.

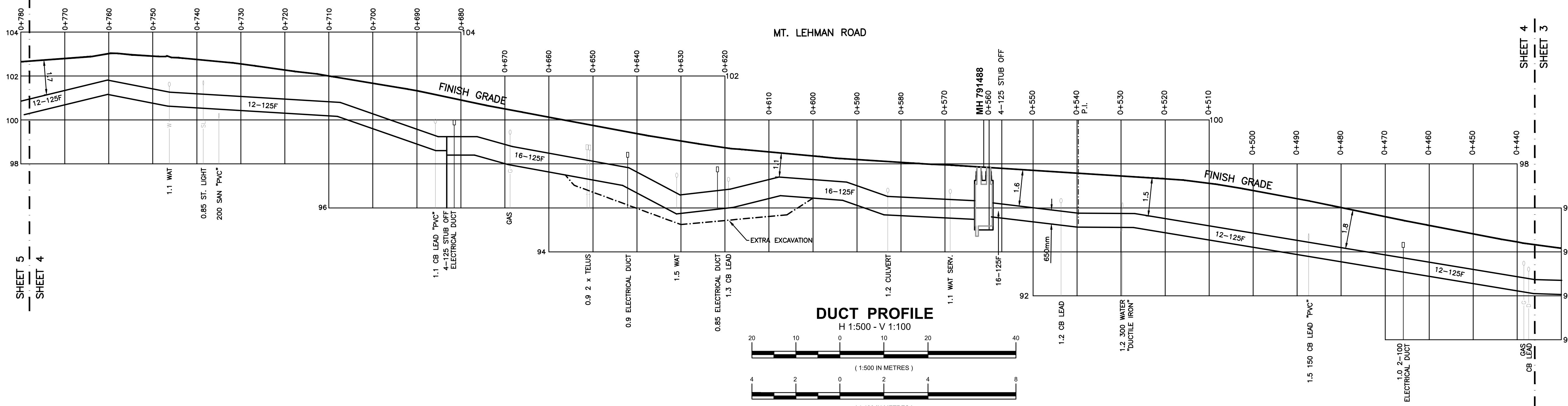
CUSTOM NOTES HERE IF REQUIRED



PLAN
1:500

(1:500 IN METRES)

**ISSUED
RECORD
DRAWING**



DUCT PROFILE
H 1:500 - V 1:100

(1:500 IN METRES)

(1:100 IN METRES)

- CIVIL PLAN LEGEND:**
- PROPOSED DUCT
 - - - EXISTING DUCT
 - FIELD COMPLETED DUCT
 - SERVICE BOX
 - TERMINAL POLE
 - LOW PROFILE TRANSFORMER (LPT-PYRAMID PAD)
 - LOW PROFILE TRANSFORMER (LPT)
 - PAD MOUNT TRANSFORMER (PMT)
 - 3ø & 1ø JUNCTION & PULL BOXES (332, 632, 832 & 1232)
 - PRECAST MANHOLE
 - VISTA SWITCH SUBMERSIBLE (VSWB)
 - VISTA SWITCH ABOVE GROUND (VSWA)
- REFER TO ES53 AND ES54 UNDERGROUND STANDARDS**

CSA S250 ACCURACY NAD 83 - 10 UTM
BASE ACCURACY LEVEL: 4 +/- 1000 mm
ASB ACCURACY LEVEL: 4 +/- 1000 mm

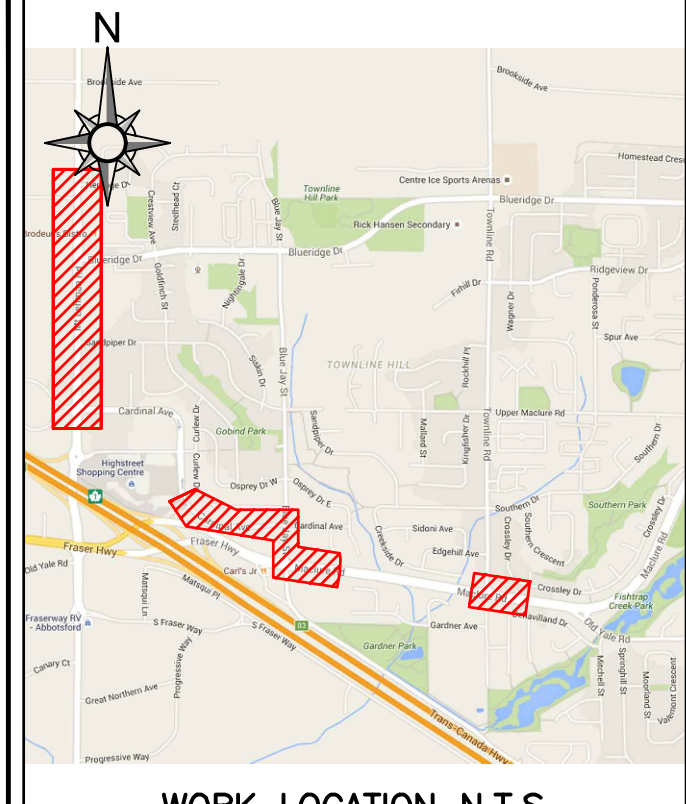
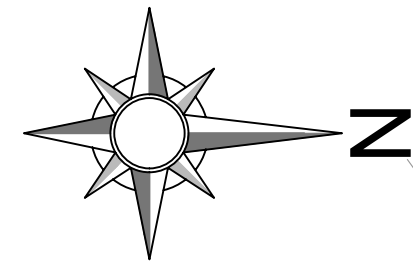
| REF# | DRAWING NUMBER | NO | REMARKS | DATE | DESIGNED | INDEP CHK | DFTG CHK | INSP | REV | ACPT |
|------|----------------|----|---|------------|-----------|-----------|----------|------|-----|------|
| 5 | ---- | | | | | | | | | |
| 4 | ---- | | | | | | | | | |
| 3 | ---- | 3 | DESIGN: 0003858310 - ISSUED RECORD DRAWING (FINAL INSPCT. 2022-09-14) | 2022-10-05 | MMASSOLIN | LP | AC | MG | | |
| 2 | ---- | 2 | DESIGN: 0003858310 - ISSUED FOR CONSTRUCTION | 2020-01-03 | RENNIS | CM | | | | |
| 1 | ---- | 1 | DESIGN: 0003858310 - SCOPE CHANGE/RE-DESIGN | 2019-12-16 | RENNIS | LP | CM | | | |

| | |
|-----------|----------------|
| DSGN | ASANTOS/RENNIS |
| INDEP CHK | ---- |
| DESIGN# | 0003858310 |
| WO# | 02100490 |
| DESIGN# | 000 |
| WO# | 0 |
| REV | ---- |
| ACPT | ---- |

BCHydro T&D ENGINEERING & DESIGN

FRASER VALLEY EAST
ABBOTSFORD
UNDERGROUND DUCT & STRUCTURES FOR
THREE NEW FEEDERS @
MT LEHMAN SUBSTATION
ABBOTSFORD, BC

DATE: 2016-04-06 GRID NO: ---- DWG NO: 471-U07-03175 SHEET 4 of 9 SIZE D R 3



WORK LOCATION N.T.S.

BC ONE CALL
 CALL BEFORE YOU DIG
 1-800-474-6886
 CALL AT LEAST 3 FULL
 WORKING DAYS BEFORE
 YOU PLAN TO DIG



- CIVIL NOTES:**
1. BC HYDRO REPRESENTATIVE MUST BE NOTIFIED 48 HOURS PRIOR TO CONSTRUCTION.
 2. ALL WORK TO BE PERFORMED IN ACCORDANCE WITH CLASS OF WORK SPECIFICATION 1323 AND BC HYDRO UNDERGROUND DISTRIBUTION ENGINEERING STANDARDS SERIES ES53 AND ES54.
 3. ANY CHANGES NEED TO HAVE PRIOR APPROVAL OF BC HYDRO REPRESENTATIVE.
 4. ALL CONDUIT INSTALLATION FOR BC HYDRO ON PUBLIC OR PRIVATE PROPERTY SHOULD HAVE 0.9m COVER AND ANY FACTORY BEND MUST HAVE A MINIMUM RADIUS OF 0.9m.
 5. ALL UTILITIES (EXCEPT TELUS) MUST MAINTAIN A 0.9m HORIZONTAL AND 0.3m VERTICAL SEPARATION FROM BC HYDRO DUCT UNLESS DIRECTED OTHERWISE BY BC HYDRO REPRESENTATIVE.
 6. TRANSFORMER MUST BE A MINIMUM OF 1.5m BEHIND NON-MOUNTABLE CURB OR PROTECTED. FINAL NUMBER AND LOCATION OF PROTECTION POSTS TO BE DETERMINED IN THE FIELD BY BC HYDRO REPRESENTATIVE.
 7. OTHER UTILITIES SHOWN ON THE CIVIL DRAWING ARE FOR REFERENCE ONLY. PROVE LOCATION OF ALL UTILITIES IN THE WORK AREA BEFORE CONSTRUCTION. FOR CURRENT INFORMATION CONTACT BC ONE CALL.
 8. FOR TRANSFORMER PAD COUNTERPOISE CLEARANCES TO OTHER UTILITIES AND UNDERGROUND CONDUCTIVE SURFACES, SEE ES54.
 9. ALL OFFSETS INDICATE CENTERLINE OF BC HYDRO PLANT.
 10. MINIMUM OFFSET FOR BC HYDRO DUCTS, IN JOINT TRENCH, FROM PROPERTY LINE IS 1.2m, UNLESS OTHERWISE NOTED.
 11. STUB SERVICE DUCT 1.0m FROM PROPERTY CORNER AND 1.0m INTO THE LOT.
 12. METRES EXPRESSED IN DECIMALS, MILLIMETRES IN WHOLE NUMBERS.

CUSTOM NOTES HERE IF REQUIRED

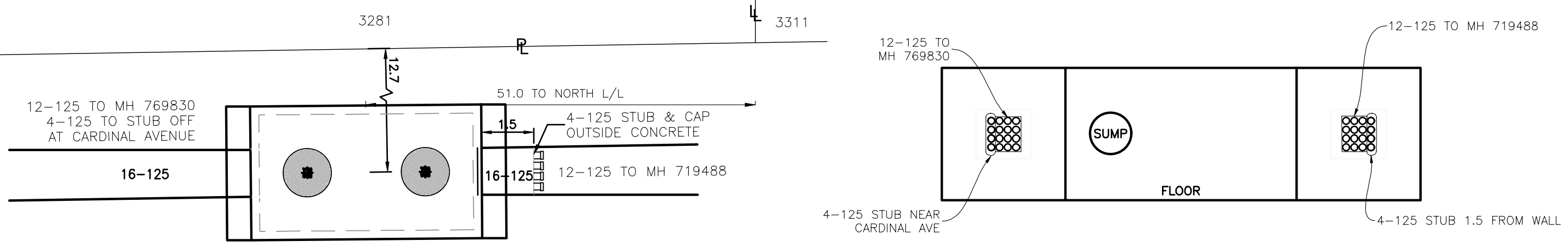
- CIVIL PLAN LEGEND:**
- PROPOSED DUCT
 - - - EXISTING DUCT
 - FIELD COMPLETED DUCT
 - SERVICE BOX
 - TERMINAL POLE
 - LOW PROFILE TRANSFORMER (LPT-PYRAMID PAD)
 - LOW PROFILE TRANSFORMER (LPT)
 - PAD MOUNT TRANSFORMER (PMT)
 - 3ø & 1ø JUNCTION & PULL BOXES (332, 632, 832 & 1232)
 - PRECAST MANHOLE
 - VISTA SWITCH SUBMERSIBLE (VSWB)
 - VISTA SWITCH ABOVE GROUND (VSWA)
- REFER TO ES53 AND ES54 UNDERGROUND STANDARDS

CSA S250 ACCURACY NAD 83 - 10 UTM
 BASE ACCURACY LEVEL: 4 +/- 1000 mm
 ASB ACCURACY LEVEL: 4 +/- 1000 mm

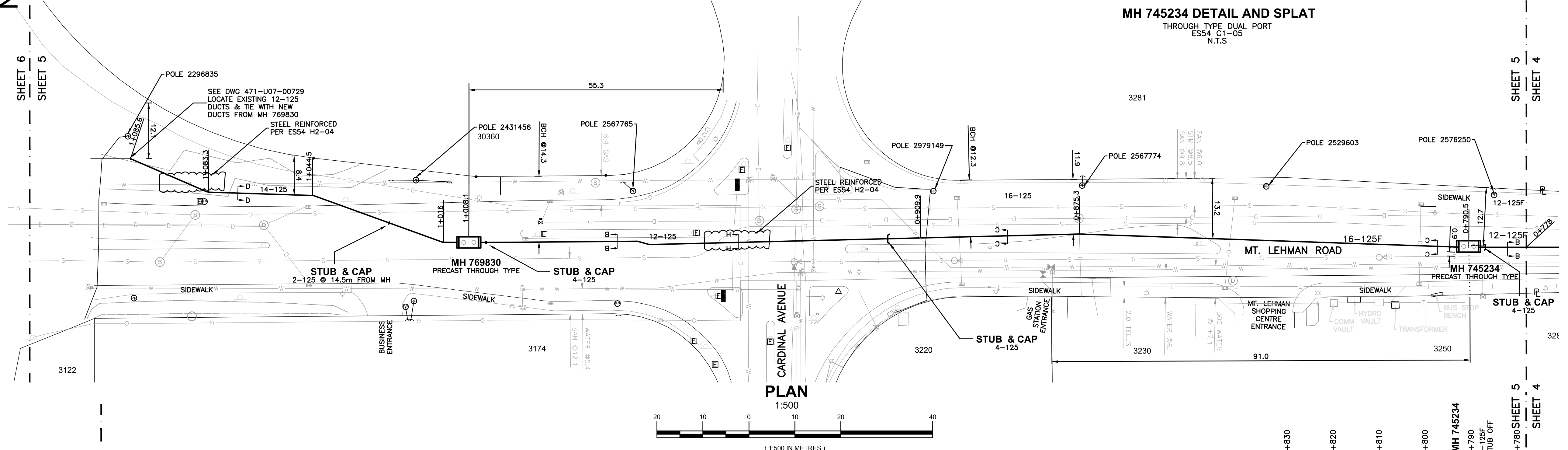
BC Hydro T&D ENGINEERING & DESIGN

FRASER VALLEY EAST
 ABBOTSFORD
 UNDERGROUND DUCT & STRUCTURES FOR
 THREE NEW FEEDERS @
 MT LEHMAN SUBSTATION
 ABBOTSFORD, BC

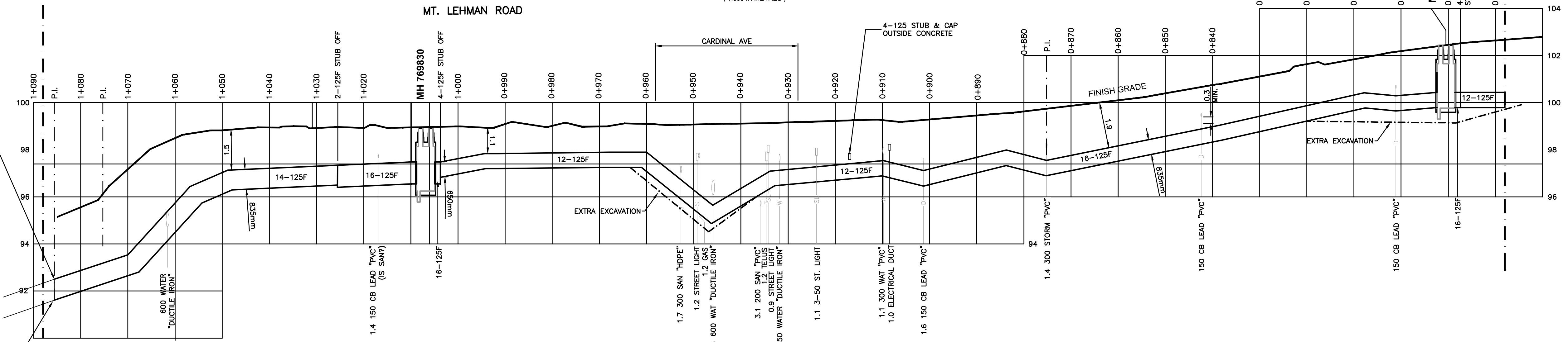
**ISSUED
 RECORD
 DRAWING**



MH 745234 DETAIL AND SPLAT
 THROUGH TYPE DUAL PORT
 ES54 C1-05
 N.T.S.

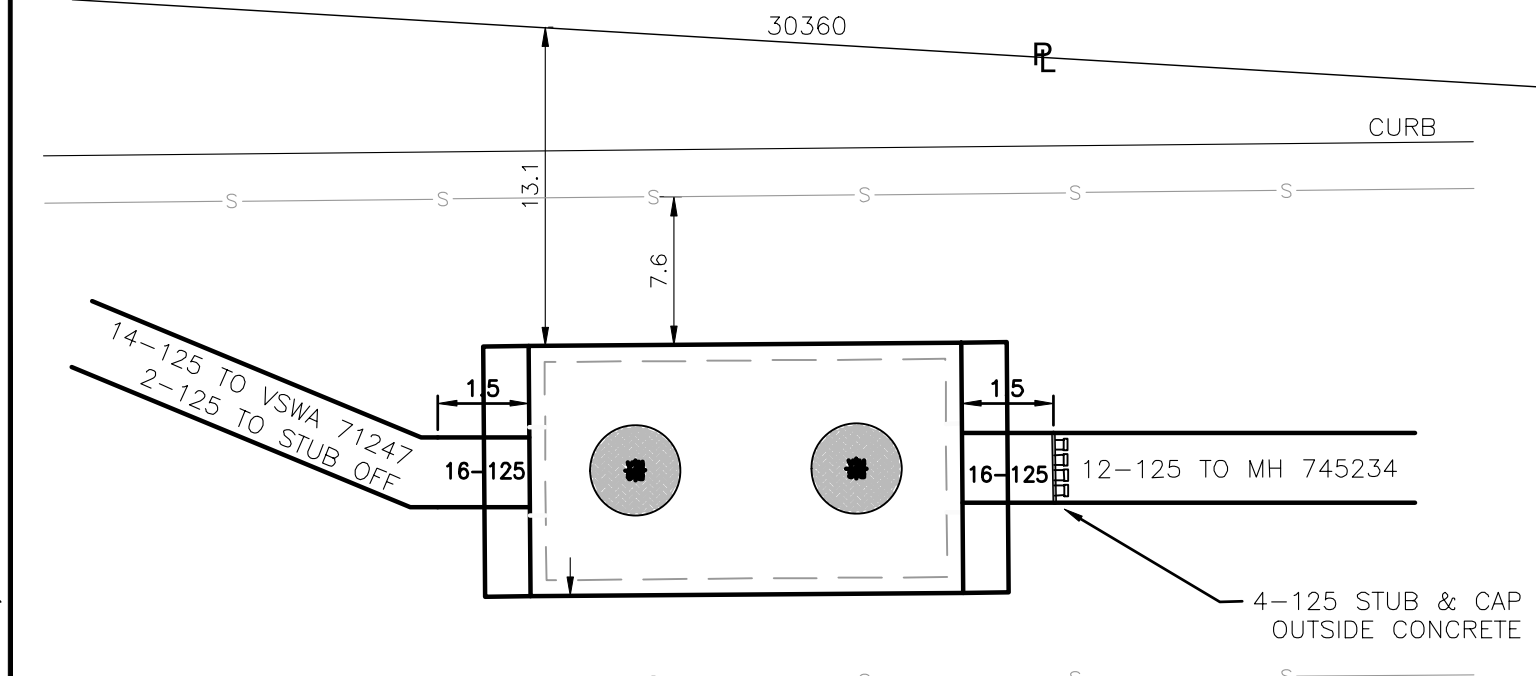


PLAN
 1:500

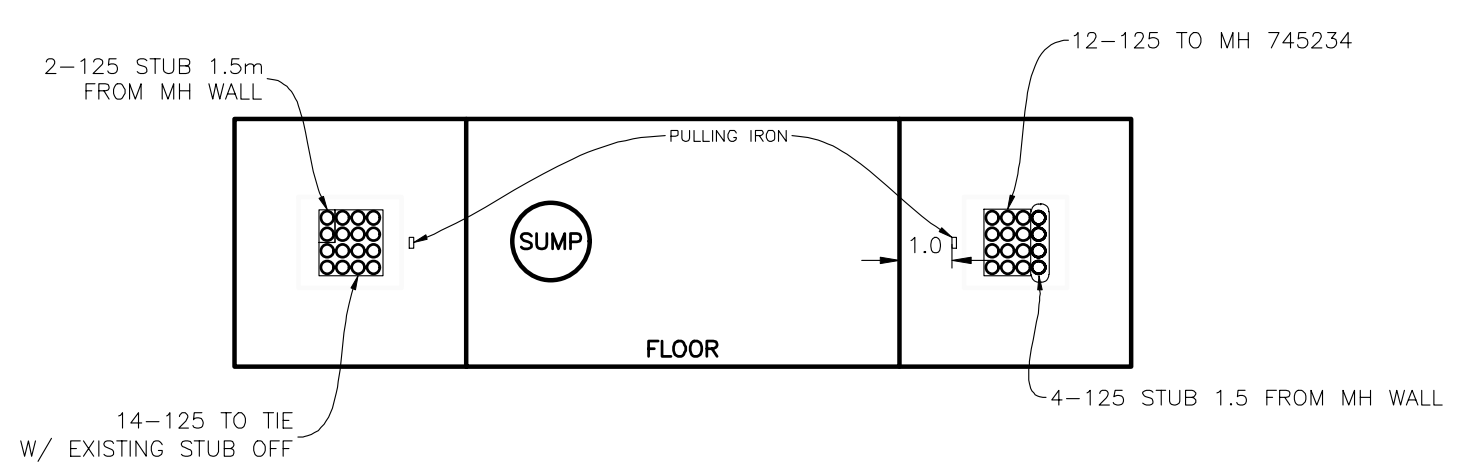


DUCT PROFILE
 H 1:500 - V 1:100

LOCATE EXISTING 12-125 DUCTS & TIE WITH NEW DUCTS FROM MH 769830 SEE DWG 471-U07-00729



MH 769830 DETAIL AND SPLAT
 THROUGH TYPE DUAL PORT
 ES54 C1-05
 N.T.S.

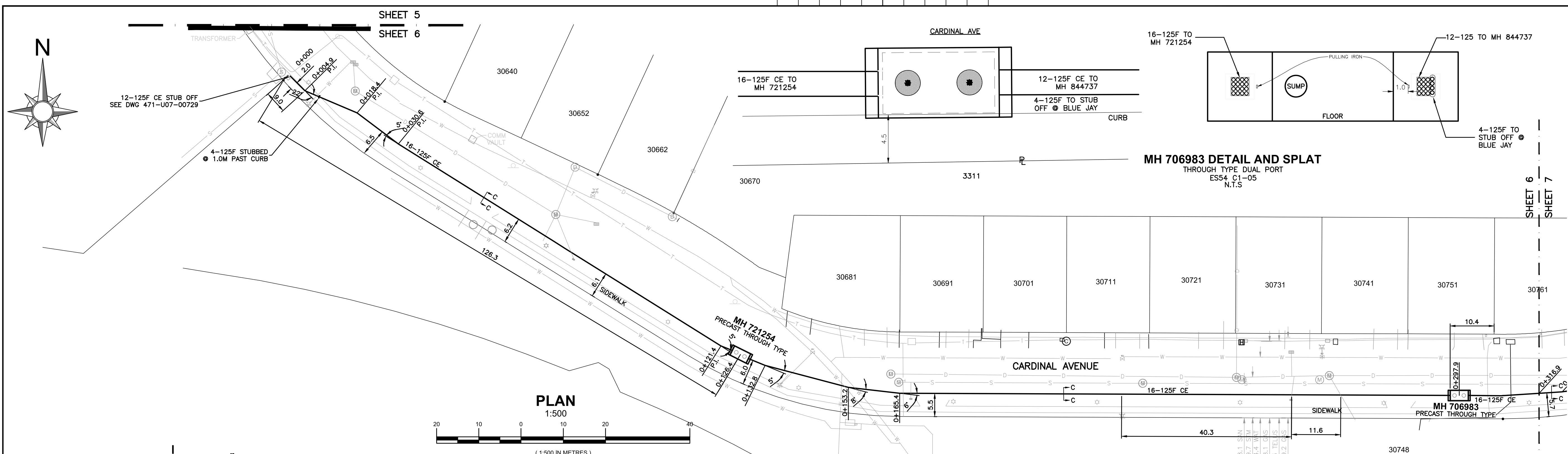


14-125 TO TIE W/ EXISTING STUB OFF

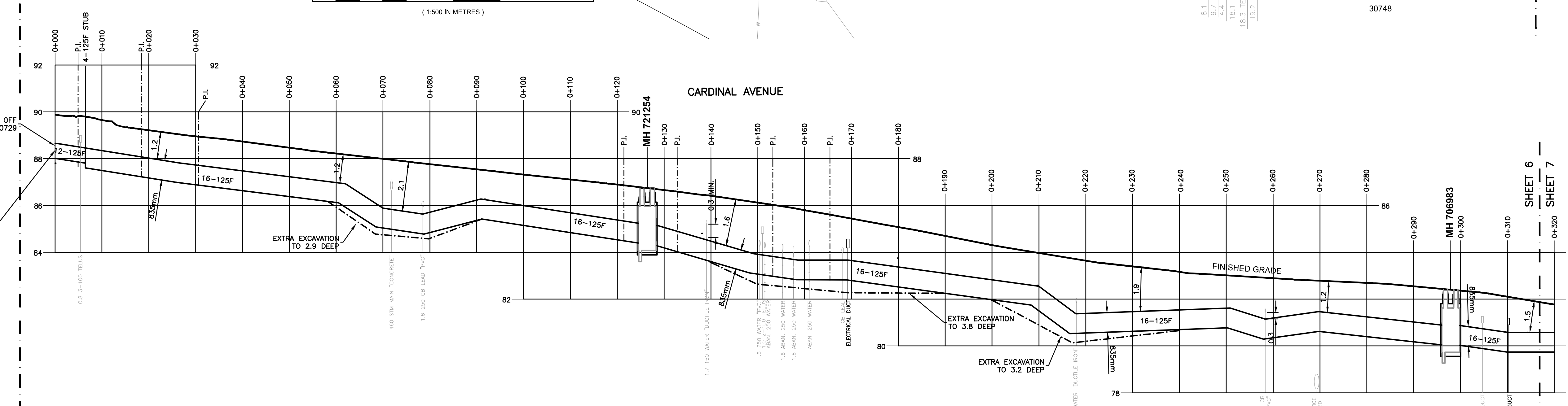
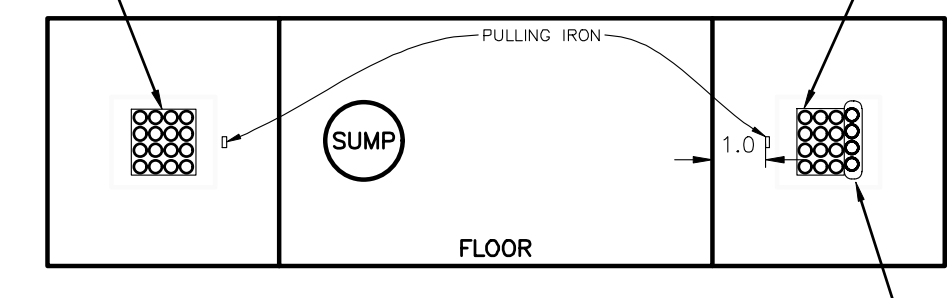
| REF# | DRAWING NUMBER | NO | REMARKS | DATE | DESIGNED | INDEP CHK | DFTG | INSP | REV | ACPT |
|------|----------------|------|---|------------|-----------|-----------|------|------|-----|------|
| 5 | ---- | ---- | | | | | | | | |
| 4 | ---- | ---- | | | | | | | | |
| 3 | ---- | 3 | DESIGN: 0003858310 - ISSUED RECORD DRAWING (FINAL INSPCT. 2022-09-14) | 2022-10-05 | MMASSOLIN | LP | AC | MG | | |
| 2 | ---- | 2 | DESIGN: 0003858310 - ISSUED FOR CONSTRUCTION | 2020-01-03 | RENNIS | CM | | | | |
| 1 | ---- | 1 | DESIGN: 0003858310 - SCOPE CHANGE/RE-DESIGN | 2019-12-16 | RENNIS | LP | CM | | | |
| REF# | DRAWING NUMBER | NO | REMARKS | DATE | DESIGNED | INDEP CHK | DFTG | INSP | REV | ACPT |

| DSGN | ASANTOS/RENNIS |
|-----------|----------------|
| INDEP CHK | ---- |
| DESIGN# | 0003858310 |
| DFTG | CMORROW/LOPIER |
| WO# | 02100490 |
| DESIGN# | 000 |
| INSP | MCUJARDO |
| REV | ---- |
| ACPT | ---- |

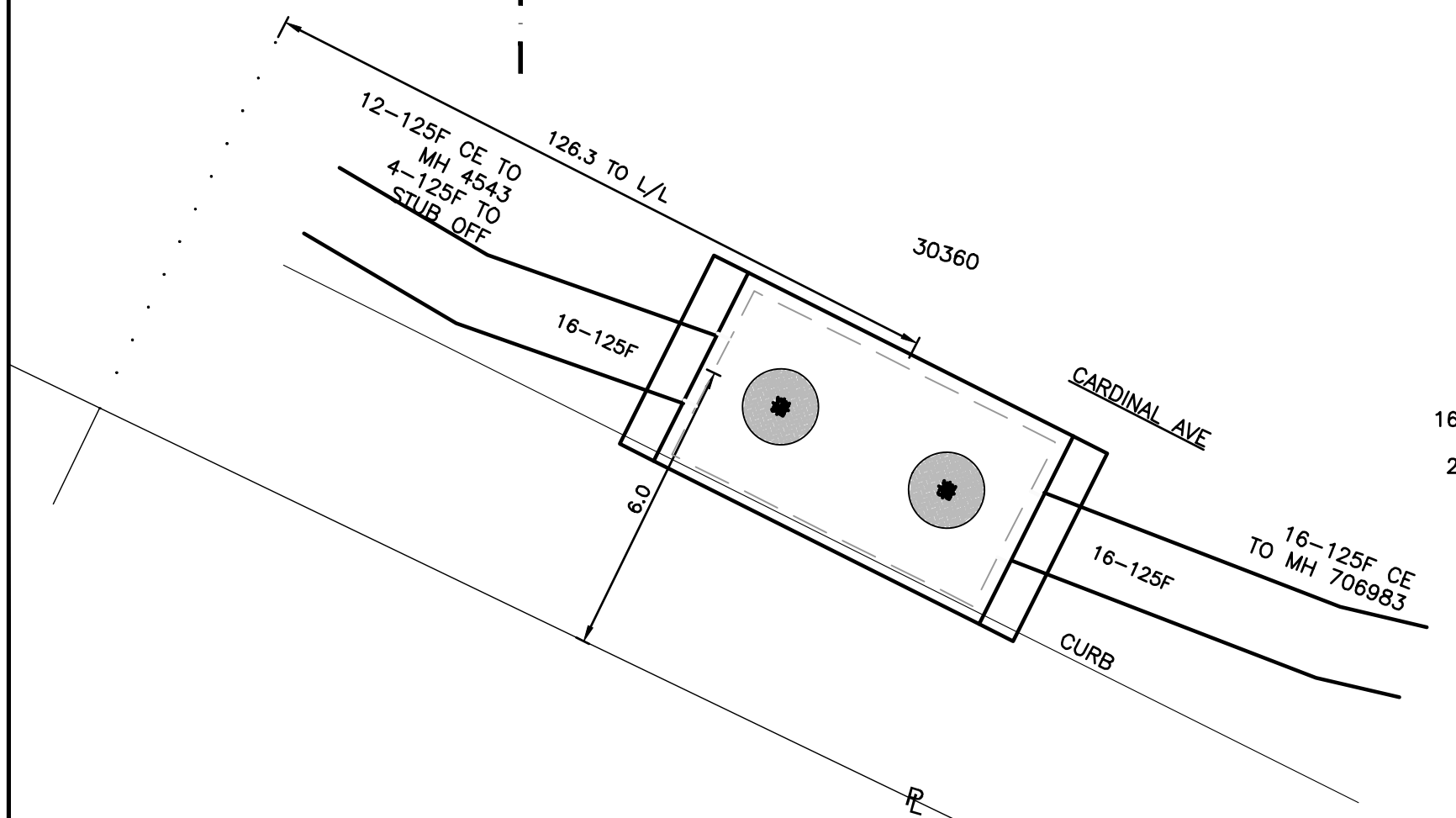
| DATE | GRID NO | DWG NO | SHEET | OF | SIZE | R |
|------------|---------|---------------|-------|----|------|---|
| 2016-04-06 | ---- | 471-U07-03175 | 5 | 9 | D | 3 |



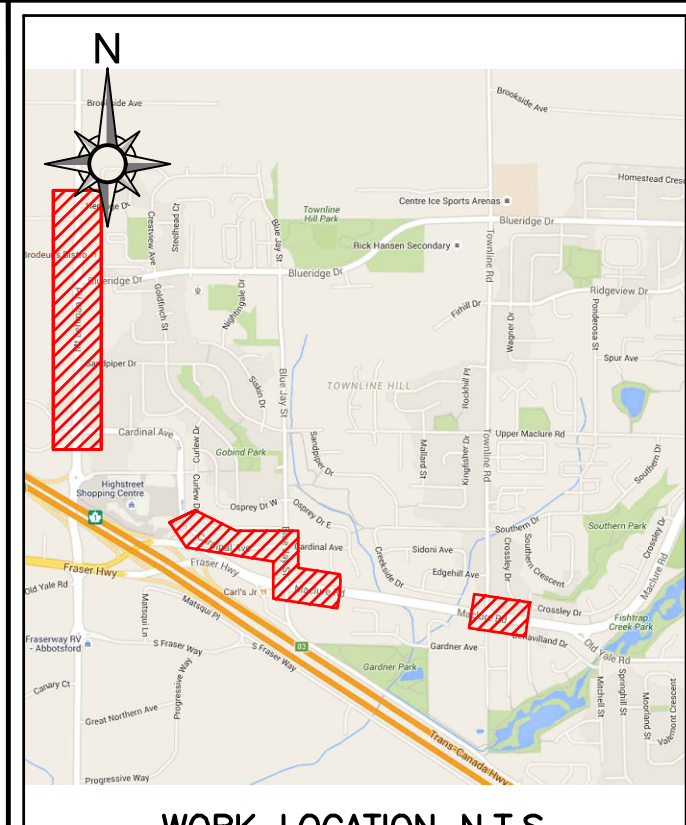
MH 706983 DETAIL AND SPLAT
THROUGH TYPE DUAL PORT
ES54 C1-05
N.T.S.



DUCT PROFILE
H 1:500 - V 1:100



MH 721254 DETAIL AND SPLAT
THROUGH TYPE DUAL PORT
ES54 C1-05
N.T.S.



WORK LOCATION N.T.S.

BC ONE CALL
CALL BEFORE YOU DIG
1-800-474-6886
CALL AT LEAST 3 FULL
WORKING DAYS BEFORE
YOU PLAN TO DIG

- CIVIL NOTES:**
1. BC HYDRO REPRESENTATIVE MUST BE NOTIFIED 48 HOURS PRIOR TO CONSTRUCTION.
 2. ALL WORK TO BE PERFORMED IN ACCORDANCE WITH CLASS OF WORK SPECIFICATION 1323 AND BC HYDRO UNDERGROUND DISTRIBUTION ENGINEERING STANDARDS SERIES ES53 AND ES54.
 3. ANY CHANGES NEED TO HAVE PRIOR APPROVAL OF BC HYDRO REPRESENTATIVE.
 4. ALL CONDUIT INSTALLATION FOR BC HYDRO ON PUBLIC OR PRIVATE PROPERTY SHOULD HAVE 0.9m COVER AND ANY FACTORY BEND MUST HAVE A MINIMUM RADIUS OF 0.9m.
 5. ALL UTILITIES (EXCEPT TELLUS) MUST MAINTAIN A 0.9m HORIZONTAL AND 0.3m VERTICAL SEPARATION FROM BC HYDRO DUCT UNLESS DIRECTED OTHERWISE BY BC HYDRO REPRESENTATIVE.
 6. TRANSFORMER MUST BE A MINIMUM OF 1.5m BEHIND NON-MOUNTABLE CURB OR PROTECTED. FINAL NUMBER AND LOCATION OF PROTECTION POSTS TO BE DETERMINED IN THE FIELD BY BC HYDRO REPRESENTATIVE.
 7. OTHER UTILITIES SHOWN ON THE CIVIL DRAWING ARE FOR REFERENCE ONLY. PROVE LOCATION OF ALL UTILITIES IN THE WORK AREA BEFORE CONSTRUCTION. FOR CURRENT INFORMATION CONTACT BC ONE CALL.
 8. FOR TRANSFORMER PAD COUNTERPOISE CLEARANCES TO OTHER UTILITIES AND UNDERGROUND CONDUCTIVE SURFACES, SEE ES54.
 9. ALL OFFSETS INDICATE CENTERLINE OF BC HYDRO PLANT.
 10. MINIMUM OFFSET FOR BC HYDRO DUCTS, IN JOINT TRENCH, FROM PROPERTY LINE IS 1.2m, UNLESS OTHERWISE NOTED.
 11. STUB SERVICE DUCT 1.0m FROM PROPERTY CORNER AND 1.2m INTO THE LOT.
 12. METRES EXPRESSED IN DECIMALS, MILLIMETRES IN WHOLE NUMBERS.

CUSTOM NOTES HERE IF REQUIRED

- CIVIL PLAN LEGEND:**
- PROPOSED DUCT
 - EXISTING DUCT
 - FIELD COMPLETED DUCT
 - SERVICE BOX
 - TERMINAL POLE
 - LOW PROFILE TRANSFORMER (LPT-PYRAMID PAD)
 - LOW PROFILE TRANSFORMER (LPT)
 - PAD MOUNT TRANSFORMER (PMT)
 - 3ø & 1ø JUNCTION & PULL BOXES (332, 832, 832 & 1232)
 - PRECAST MANHOLE
 - VISTA SWITCH SUBMERSIBLE (VSWB)
 - VISTA SWITCH ABOVE GROUND (VSWA)
- REFER TO ES53 AND ES54 UNDERGROUND STANDARDS

CSA S250 ACCURACY NAD 83 - 10 UTM
BASE ACCURACY LEVEL: 4 +/- 1000 mm
ASB ACCURACY LEVEL: 4 +/- 1000 mm

**ISSUED
RECORD
DRAWING**

| REF# | DRAWING NUMBER | NO | REMARKS | DATE | DESIGNED | INDEP CHK | DFTG CHK | INSP | REV | ACPT |
|------|----------------|----|---|------------|-----------|-----------|----------|------|-----|------|
| 5 | ---- | | | | | | | | | |
| 4 | ---- | | | | | | | | | |
| 3 | ---- | 3 | DESIGN: 0003858310 - ISSUED RECORD DRAWING (FINAL INSPCT. 2022-09-14) | 2022-10-05 | MMASSOLIN | LP | AC | MG | | |
| 2 | ---- | 2 | DESIGN: 0003858310 - ISSUED FOR CONSTRUCTION | 2020-01-03 | RENNIS | CM | | | | |
| 1 | ---- | 1 | DESIGN: 0003858310 - SCOPE CHANGE/RE-DESIGN | 2019-12-16 | RENNIS | LP | CM | | | |

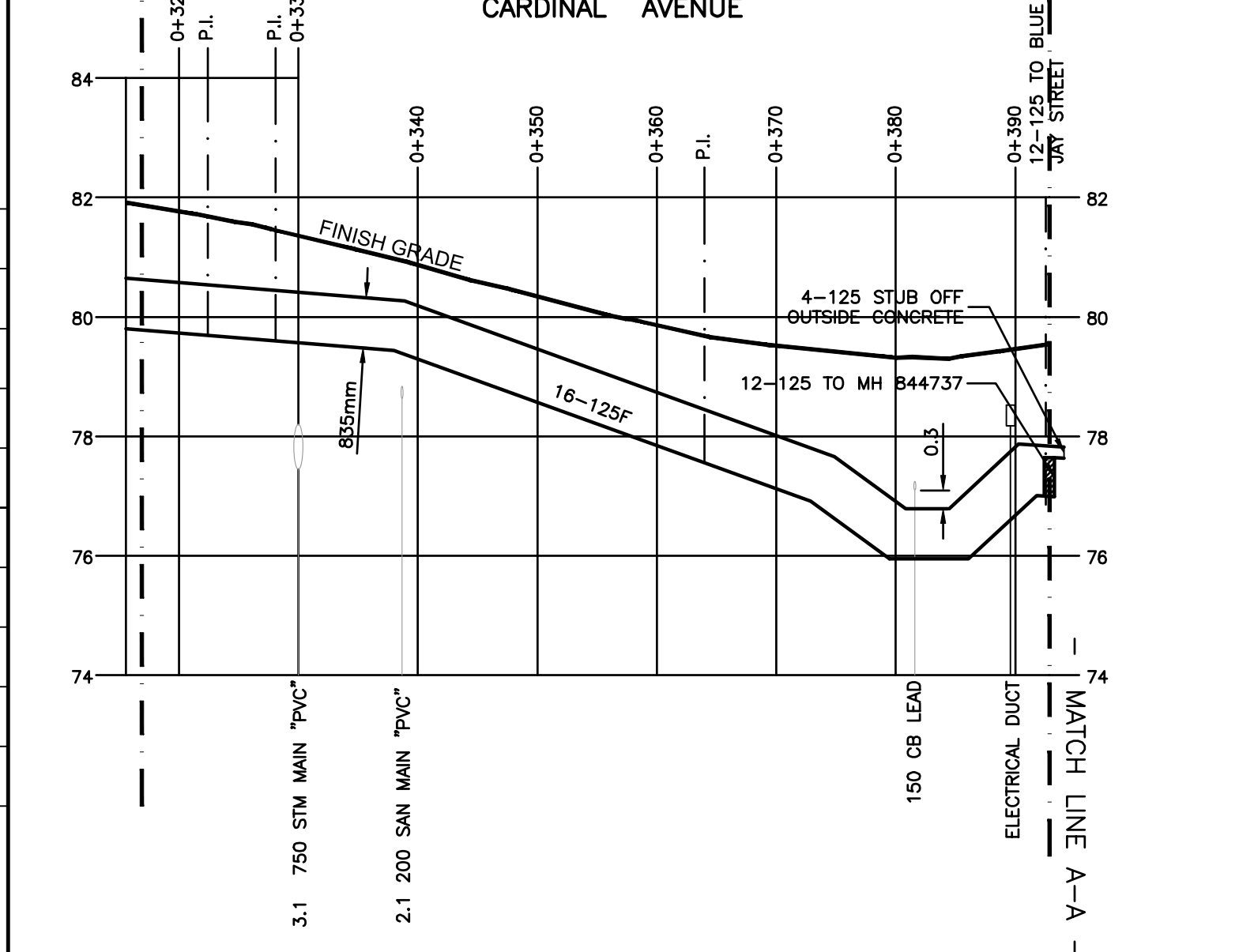
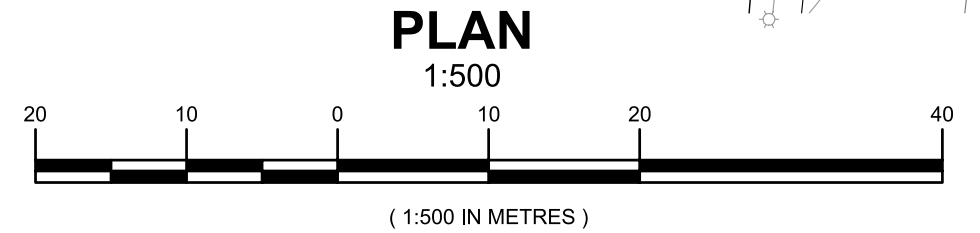
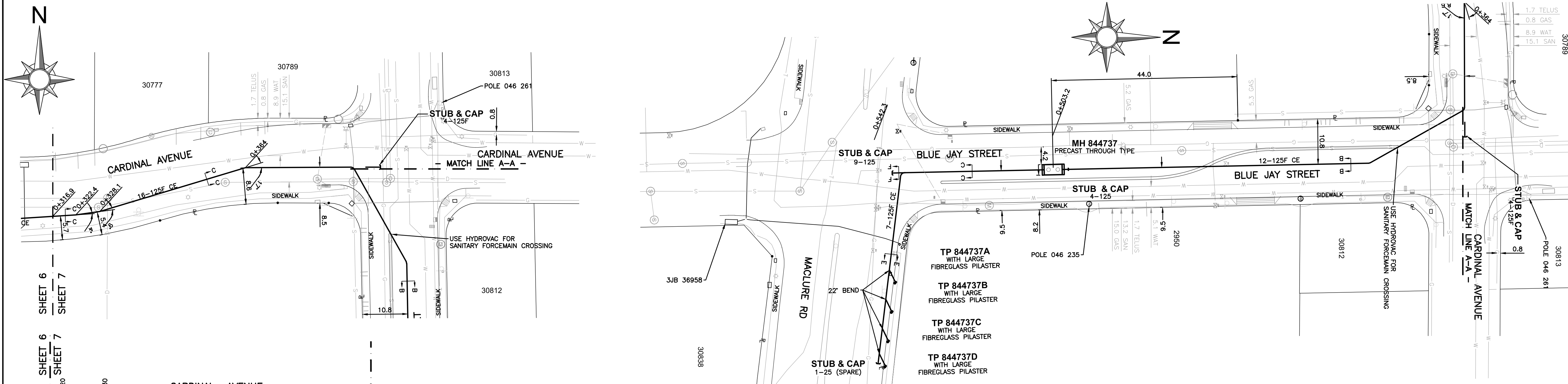
| | |
|-----------|----------------|
| DSGN | ASANTOS/RENNIS |
| INDEP CHK | ---- |
| BCH MAP | ---- |
| DESIGN# | 0003858310 |
| DFTG | CMORROW/LOPIER |
| WO# | 02100490 |
| DESIGN# | 000 |
| INSP | MCUJARDO |
| REV | ---- |
| ACPT | ---- |

BC Hydro T&D ENGINEERING & DESIGN

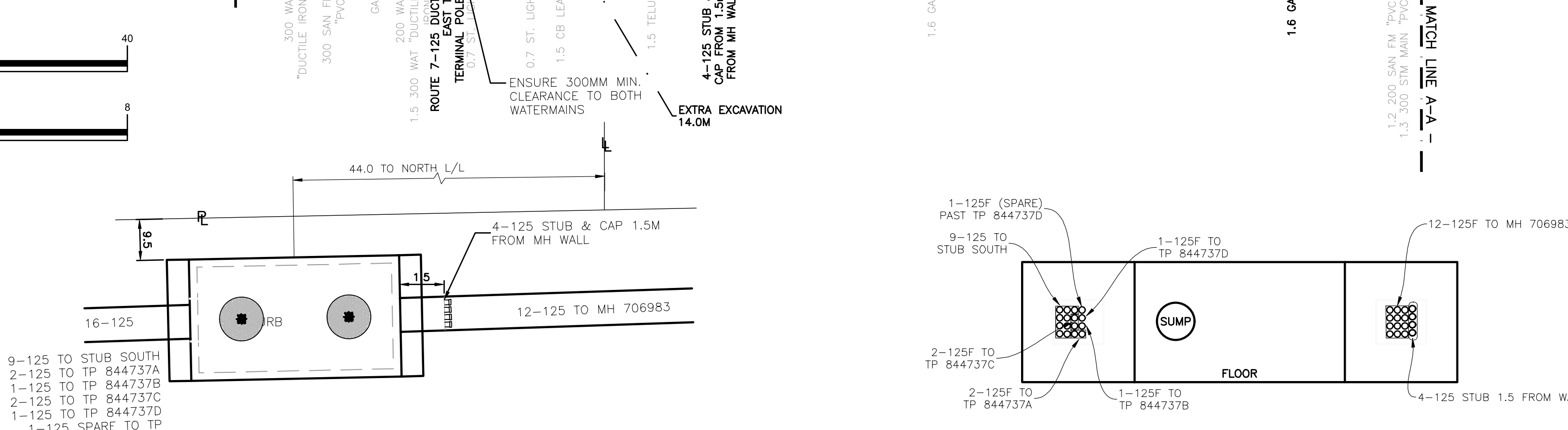
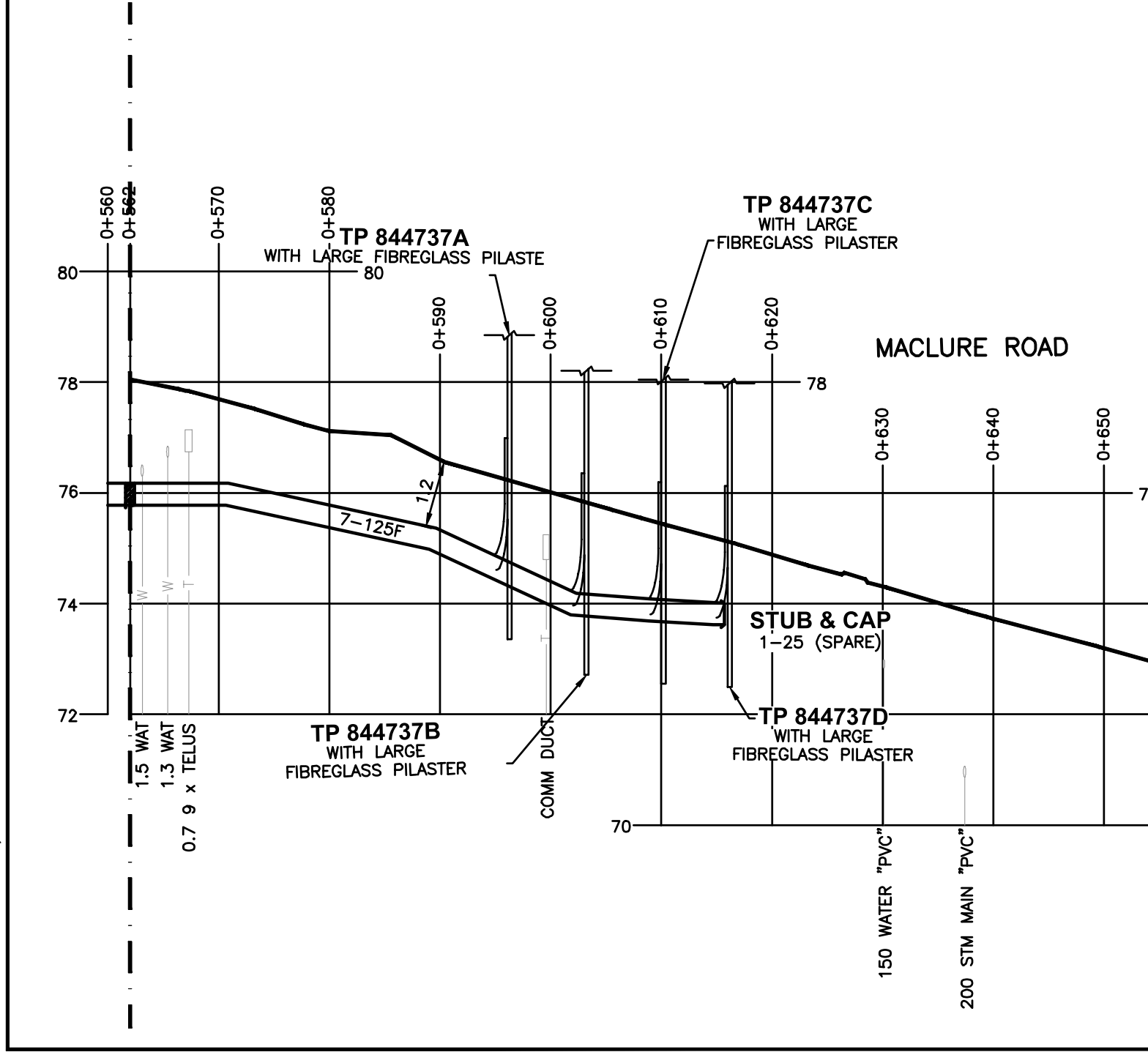
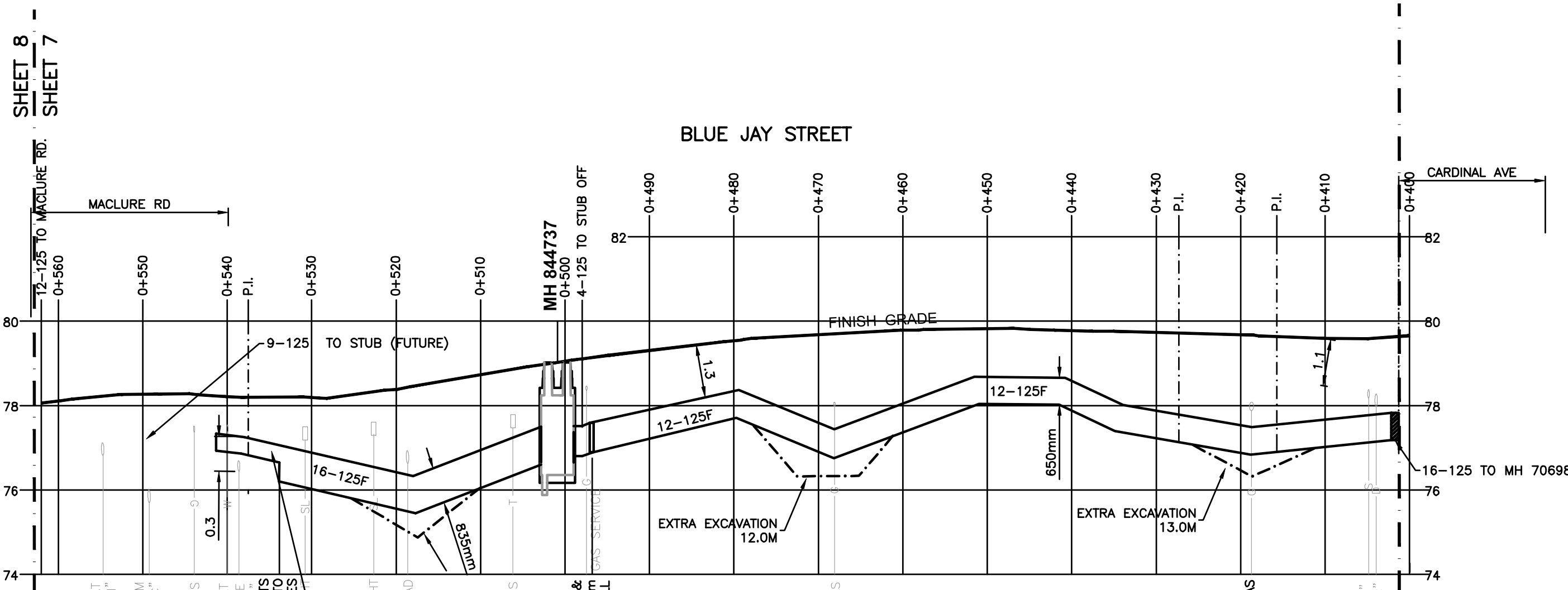
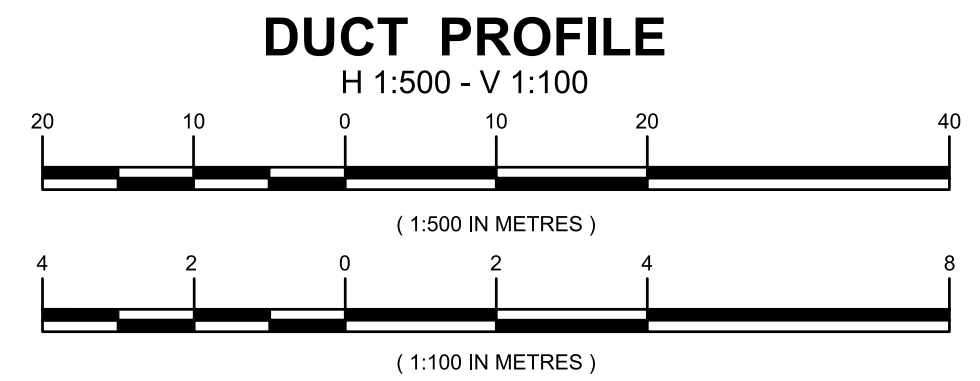
FRASER VALLEY EAST
ABBOTSFORD
UNDERGROUND DUCT & STRUCTURES FOR
THREE NEW FEEDER @
MT LEHMAN SUBSTATION
ABBOTSFORD, BC

DATE: 2016-04-06 GRID NO: ---- DWG NO: 471-U07-03175 SHEET 6 OF 9 SIZE D R 3

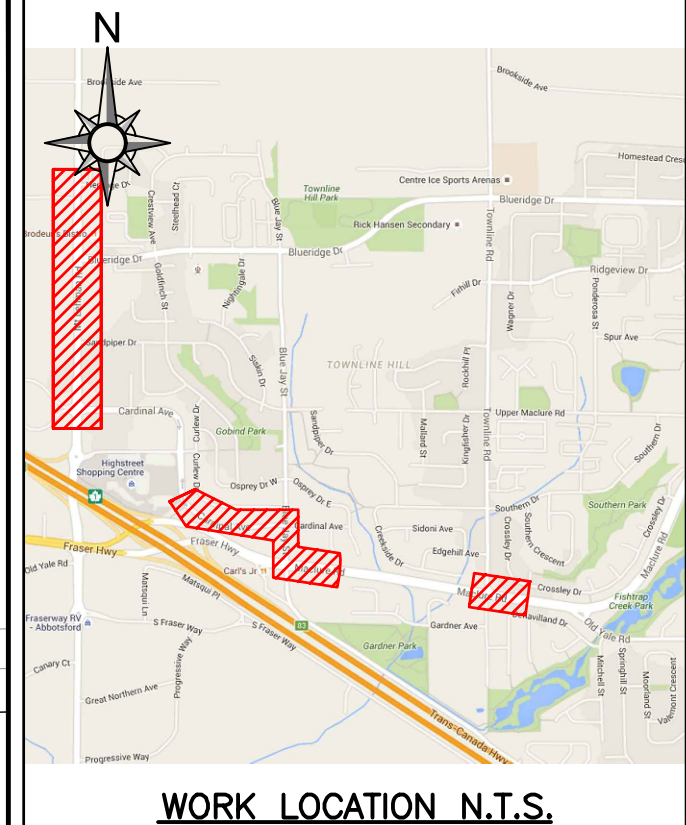
VER 1.72 FEBRUARY 01, 2016



ISSUED RECORD DRAWING



MH 844737 DETAIL AND SPLAT
THROUGH TYPE DUAL PORT
ESS4 C1-05
N.T.S.



WORK LOCATION N.T.S.

BC ONE CALL
CALL BEFORE YOU DIG
1-800-474-6886
CALL AT LEAST 3 FULL WORKING DAYS BEFORE YOU PLAN TO DIG

- CIVIL NOTES:**
1. BC HYDRO REPRESENTATIVE MUST BE NOTIFIED 48 HOURS PRIOR TO CONSTRUCTION.
 2. ALL WORK TO BE PERFORMED IN ACCORDANCE WITH CLASS OF WORK SPECIFICATION 1323 AND BC HYDRO UNDERGROUND DISTRIBUTION ENGINEERING STANDARDS SERIES ES3 AND ES4.
 3. ANY CHANGES NEED TO HAVE PRIOR APPROVAL OF BC HYDRO REPRESENTATIVE.
 4. ALL CONDUIT INSTALLATION FOR BC HYDRO ON PUBLIC OR PRIVATE PROPERTY SHOULD HAVE 0.9m COVER AND ANY FACTORY BEND MUST HAVE A MINIMUM RADIUS OF 0.9m.
 5. ALL UTILITIES (EXCEPT TELUS) MUST MAINTAIN A 0.9m HORIZONTAL AND 0.3m VERTICAL SEPARATION FROM BC HYDRO DUCT UNLESS DIRECTED OTHERWISE BY BC HYDRO REPRESENTATIVE.
 6. TRANSFORMER MUST BE A MINIMUM OF 1.5m BEHIND NON-MOUNTABLE CURB OR PROTECTED. FINAL NUMBER AND LOCATION OF PROTECTION POSTS TO BE DETERMINED IN THE FIELD BY BC HYDRO REPRESENTATIVE.
 7. OTHER UTILITIES SHOWN ON THE CIVIL DRAWING ARE FOR REFERENCE ONLY. PROVE LOCATION OF ALL UTILITIES IN THE WORK AREA BEFORE CONSTRUCTION. FOR CURRENT INFORMATION CONTACT BC ONE CALL.
 8. FOR TRANSFORMER PAD COUNTERPOISE CLEARANCES TO OTHER UTILITIES AND UNDERGROUND CONDUCTIVE SURFACES, SEE ES4.
 9. ALL OFFSETS INDICATE CENTERLINE OF BC HYDRO PLANT.
 10. MINIMUM OFFSET FOR BC HYDRO DUCTS, IN JOINT TRENCH, FROM PROPERTY LINE IS 1.2m, UNLESS OTHERWISE NOTED.
 11. STUB SERVICE DUCT 1.0m FROM PROPERTY CORNER AND 1.5m INTO THE LOT.
 12. METRES EXPRESSED IN DECIMALS, MILLIMETRES IN WHOLE NUMBERS.

CUSTOM NOTES HERE IF REQUIRED

- CIVIL PLAN LEGEND:**
- PROPOSED DUCT
 - EXISTING DUCT
 - FIELD COMPLETED DUCT
 - SERVICE BOX
 - TERMINAL POLE
 - LOW PROFILE TRANSFORMER (LPT-PYRAMID PAD)
 - LOW PROFILE TRANSFORMER (LPT)
 - PAD MOUNT TRANSFORMER (PMT) 3# & 1# JUNCTION & PULL BOXES (332, 832, 832 & 1232)
 - PRECAST MANHOLE
 - VISTA SWITCH SUBMERSIBLE (VSWB)
 - VISTA SWITCH ABOVE GROUND (VSWA)
- REFER TO ES53 AND ES54 UNDERGROUND STANDARDS

CSA S250 ACCURACY NAD 83 - 10 UTM
BASE ACCURACY LEVEL: 4 +/- 1000 mm
ASB ACCURACY LEVEL: 4 +/- 1000 mm

| REF# | DRAWING NUMBER | NO | REMARKS | DATE | DESIGNED | INDEP CHK | DFTG CHK | INSP | REV | ACPT |
|------|----------------|----|--|------------|-----------|-----------|----------|------|-----|------|
| 5 | ---- | | | | | | | | | |
| 4 | ---- | | | | | | | | | |
| 3 | ---- | 3 | DESIGN: 0003858310 - ISSUED RECORD DRAWING (FINAL INSPECT. 2022-09-14) | 2022-10-05 | MMASSOLIN | LP | AC | MG | | |
| 2 | ---- | 2 | DESIGN: 0003858310 - ISSUED FOR CONSTRUCTION | 2020-01-03 | RENNIS | CM | | | | |
| 1 | ---- | 1 | DESIGN: 0003858310 - SCOPE CHANGE/RE-DESIGN | 2019-12-16 | RENNIS | LP | CM | | | |

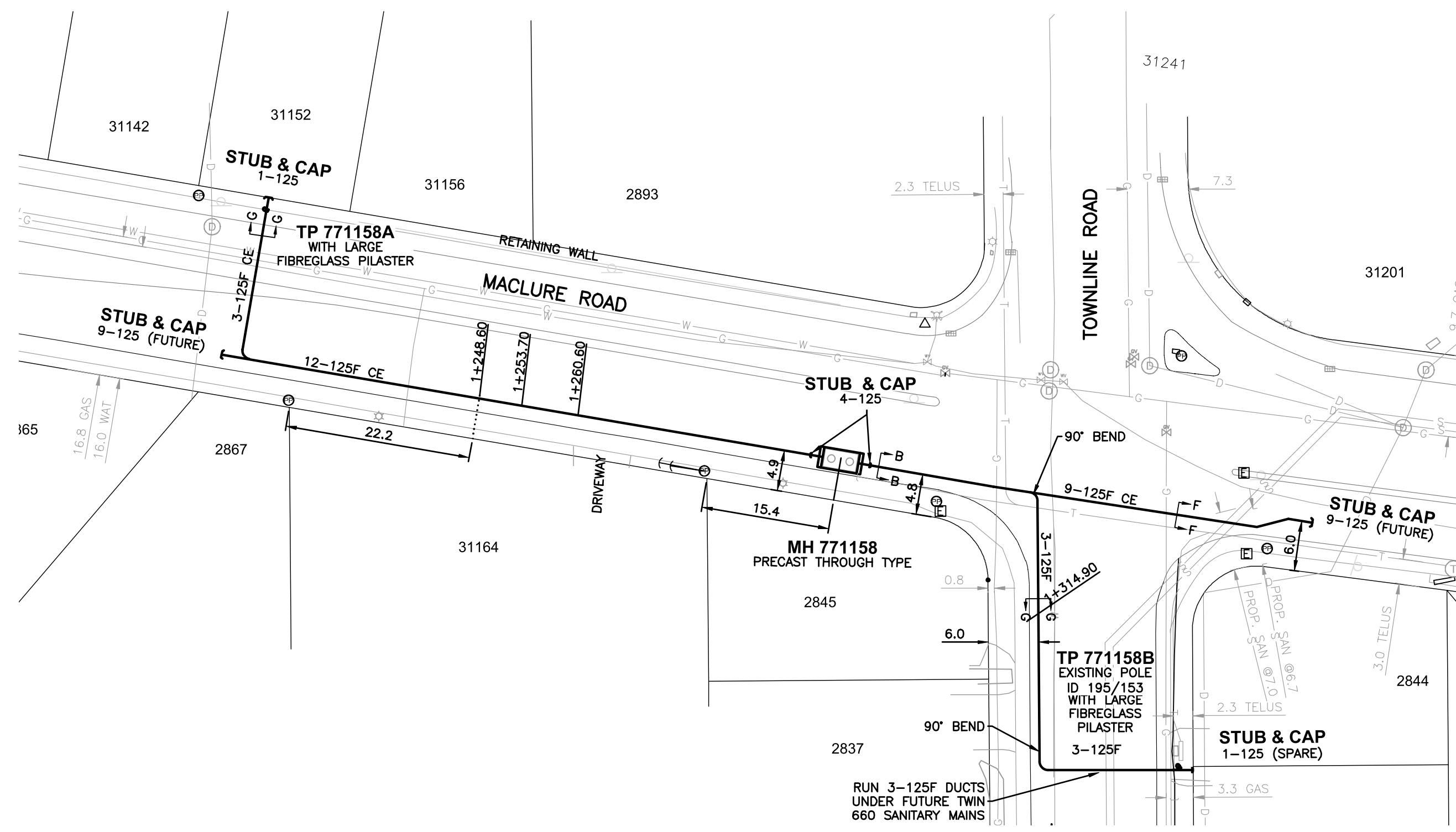
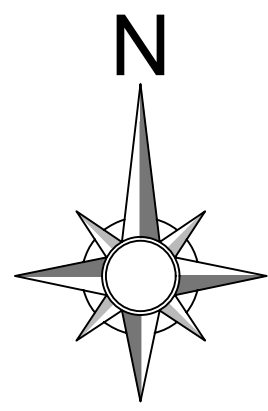
| DSGN | ASANTOS/RENNIS |
|-----------|----------------|
| INDEP CHK | ---- |
| DESIGN# | 0003858310 |
| WO# | 02100490 |
| DFTG CHK | BBAKER/CMORROW |
| INSP | MCUJARDO |
| REV | ---- |
| ACPT | ---- |

BC Hydro T&D ENGINEERING & DESIGN

FRASER VALLEY EAST
ABBOTSFORD
UNDERGROUND DUCT & STRUCTURES FOR
THREE NEW FEEDER @
MT LEHMAN SUBSTATION
ABBOTSFORD, BC

DATE: 2016-04-06 GRID NO: ---- DWG NO: 471-U07-03175 SHEET 7 of 9 SIZE D R 3

NOT TO BE REPRODUCED WITHOUT THE PERMISSION OF BC HYDRO

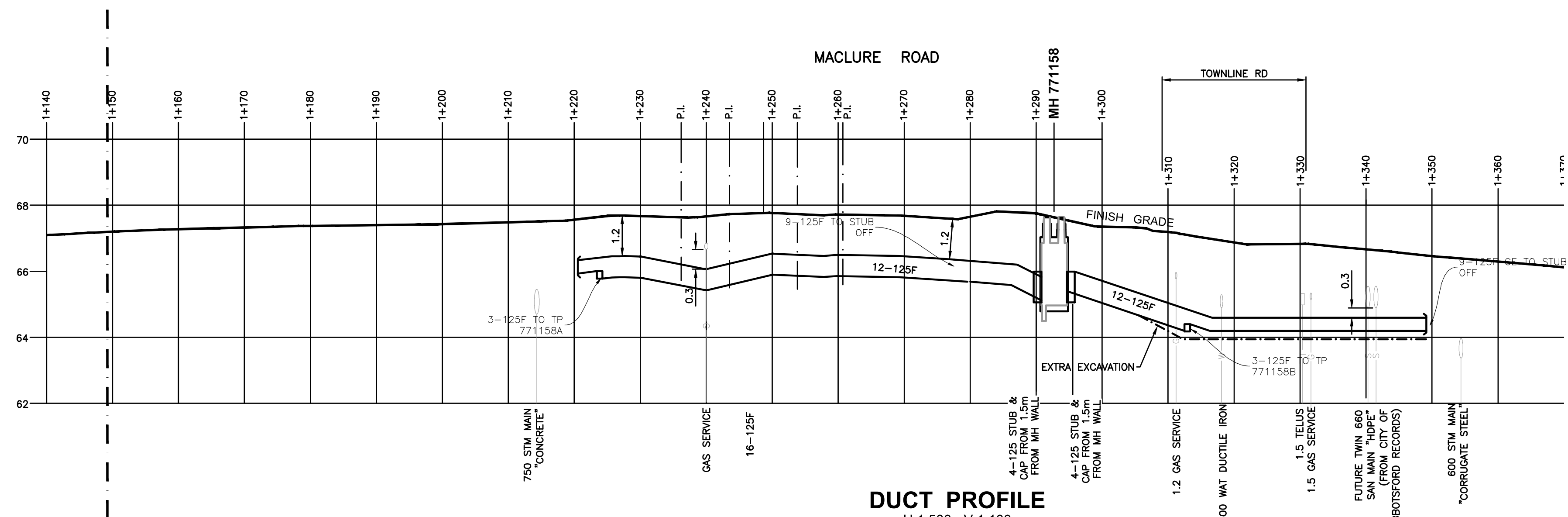


PLAN

1:500

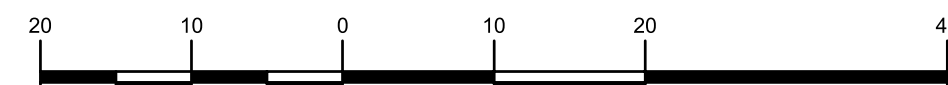


(1:500 IN METRES)

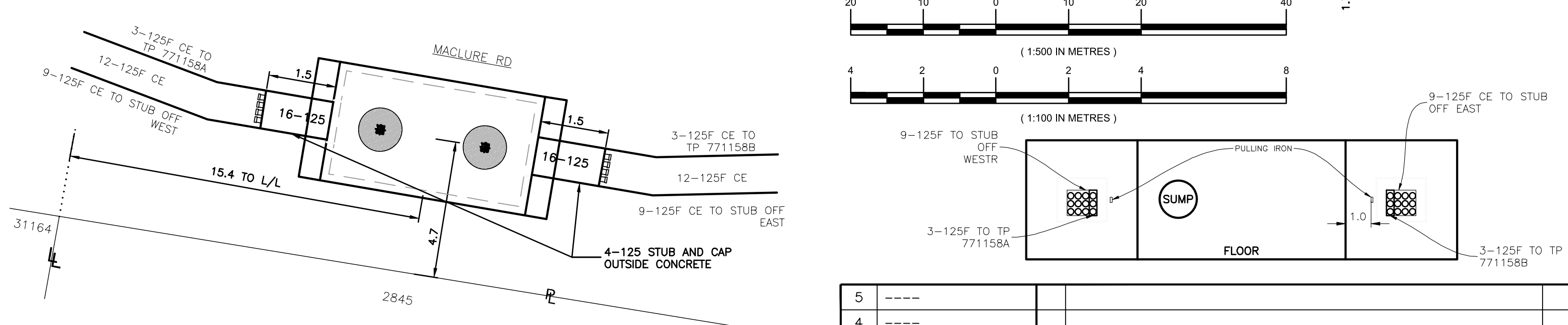


DUCT PROFILE

H 1:500 - V 1:100

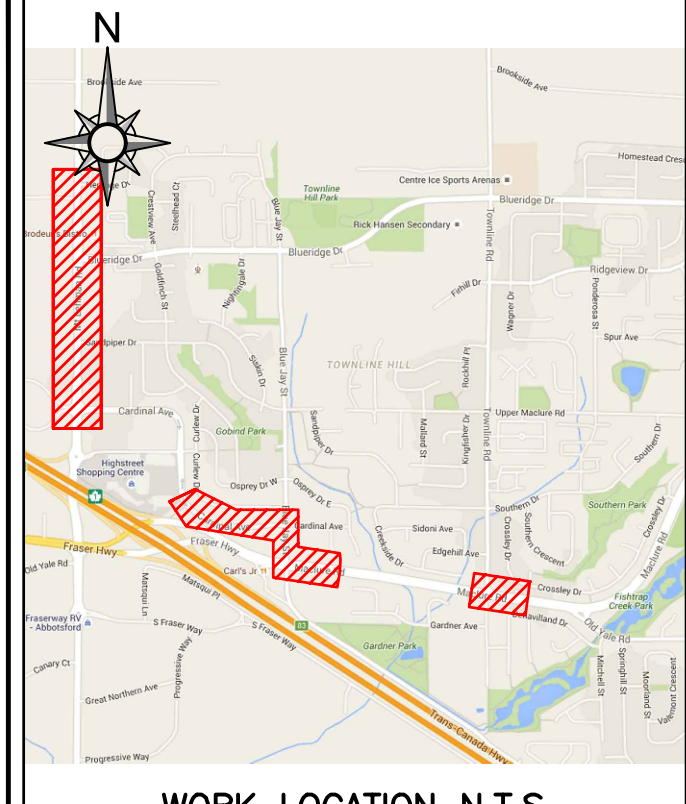


(1:500 IN METRES)



MH 771158 DETAIL AND SPLAT

THROUGH TYPE DUAL PORT
ESS4 C1-05



WORK LOCATION N.T.S.

BC ONE CALL

CALL BEFORE YOU DIG
1-800-474-6886
CALL AT LEAST 3 FULL
WORKING DAYS BEFORE
YOU PLAN TO DIG



CIVIL NOTES:

1. BC HYDRO REPRESENTATIVE MUST BE NOTIFIED 48 HOURS PRIOR TO CONSTRUCTION.
2. ALL WORK TO BE PERFORMED IN ACCORDANCE WITH CLASS OF WORK SPECIFICATION 1323 AND BC HYDRO UNDERGROUND DISTRIBUTION ENGINEERING STANDARDS SERIES ES53 AND ES54.
3. ANY CHANGES NEED TO HAVE PRIOR APPROVAL OF BC HYDRO REPRESENTATIVE.
4. ALL CONDUIT INSTALLATION FOR BC HYDRO ON PUBLIC OR PRIVATE PROPERTY SHOULD HAVE 0.9m COVER AND ANY FACTORY BEND MUST HAVE A MINIMUM RADIUS OF 0.9m.
5. ALL UTILITIES (EXCEPT TELUS) MUST MAINTAIN A 0.9m HORIZONTAL AND 0.3m VERTICAL SEPARATION FROM BC HYDRO DUCT UNLESS DIRECTED OTHERWISE BY BC HYDRO REPRESENTATIVE.
6. TRANSFORMER MUST BE A MINIMUM OF 1.5m BEHIND NON-MOUNTABLE CURB OR PROTECTED. FINAL NUMBER AND LOCATION OF PROTECTION POSTS TO BE DETERMINED IN THE FIELD BY BC HYDRO REPRESENTATIVE.
7. OTHER UTILITIES SHOWN ON THE CIVIL DRAWING ARE FOR REFERENCE ONLY. PROVE LOCATION OF ALL UTILITIES IN THE WORK AREA BEFORE CONSTRUCTION. FOR CURRENT INFORMATION CONTACT BC ONE CALL.
8. FOR TRANSFORMER PAD COUNTERPOISE CLEARANCES TO OTHER UTILITIES AND UNDERGROUND CONDUCTIVE SURFACES, SEE ES54.
9. ALL OFFSETS INDICATE CENTERLINE OF BC HYDRO PLANT.
10. MINIMUM OFFSET FOR BC HYDRO DUCTS, IN JOINT TRENCH, FROM PROPERTY LINE IS 1.2m, UNLESS OTHERWISE NOTED.
11. STUB SERVICE DUCT 1.0m FROM PROPERTY CORNER AND 1.0m INTO THE LOT.
12. METRES EXPRESSED IN DECIMALS, MILLIMETRES IN WHOLE NUMBERS.

CUSTOM NOTES HERE IF REQUIRED

CIVIL PLAN LEGEND:

- PROPOSED DUCT
- EXISTING DUCT
- FIELD COMPLETED DUCT
- SERVICE BOX
- TERMINAL POLE
- LOW PROFILE TRANSFORMER (LPT-PYRAMID PAD)
- LOW PROFILE TRANSFORMER (LPT)
- PAD MOUNT TRANSFORMER (PMT)
- 3ø & 1ø JUNCTION & PULL BOXES (332, 632, 832 & 1232)
- PRECAST MANHOLE
- VISTA SWITCH SUBMERSIBLE (VSWB)
- VISTA SWITCH ABOVE GROUND (VSWA)

REFER TO ES53 AND ES54
UNDERGROUND STANDARDS

CSA S250 ACCURACY NAD 83 - 10 UTM
BASE ACCURACY LEVEL: 4 +/- 1000 mm
ASB ACCURACY LEVEL: 4 +/- 1000 mm

**ISSUED
RECORD
DRAWING**

| REF# | DRAWING NUMBER | NO | REMARKS | DATE | DESIGNED | INDEP CHK | DFTG CHK | INSP | REV | ACPT |
|------|----------------|----|---|------------|-----------|--------------|-------------|------|-----|------|
| 5 | ---- | | | | | | | | | |
| 4 | ---- | | | | | | | | | |
| 3 | ---- | 3 | DESIGN: 0003858310 - ISSUED RECORD DRAWING (FINAL INSPCT. 2022-09-14) | 2022-10-05 | MMASSOLIN | LP | AC | MG | | |
| 2 | ---- | 2 | DESIGN: 0003858310 - ISSUED FOR CONSTRUCTION | 2020-01-03 | RENNIS | CM | | | | |
| 1 | ---- | 1 | DESIGN: 0003858310 - SCOPE CHANGE/RE-DESIGN | 2019-12-16 | RENNIS | LP | CM | | | |

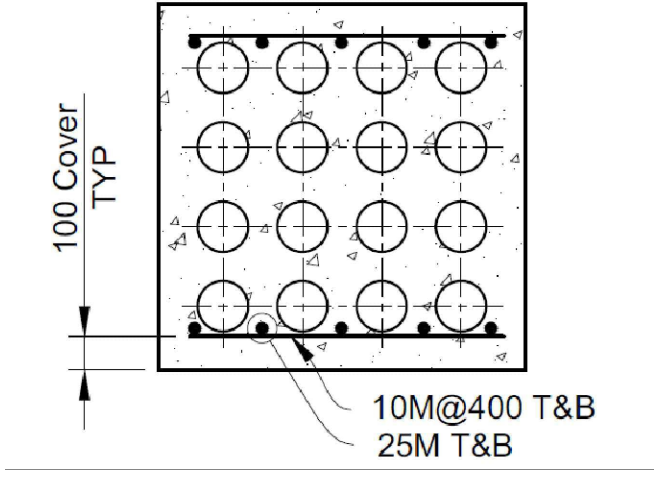
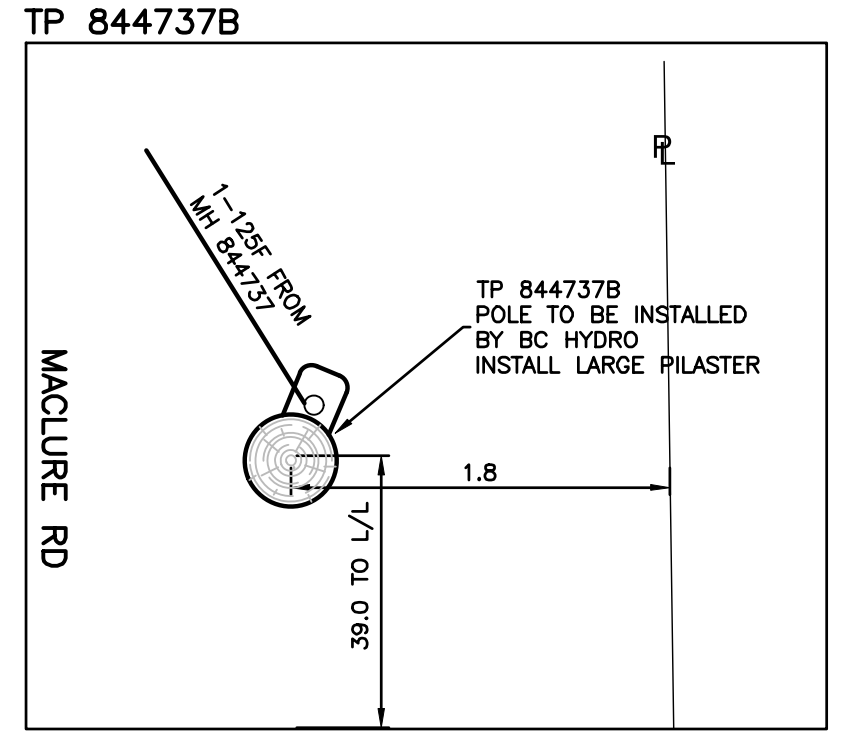
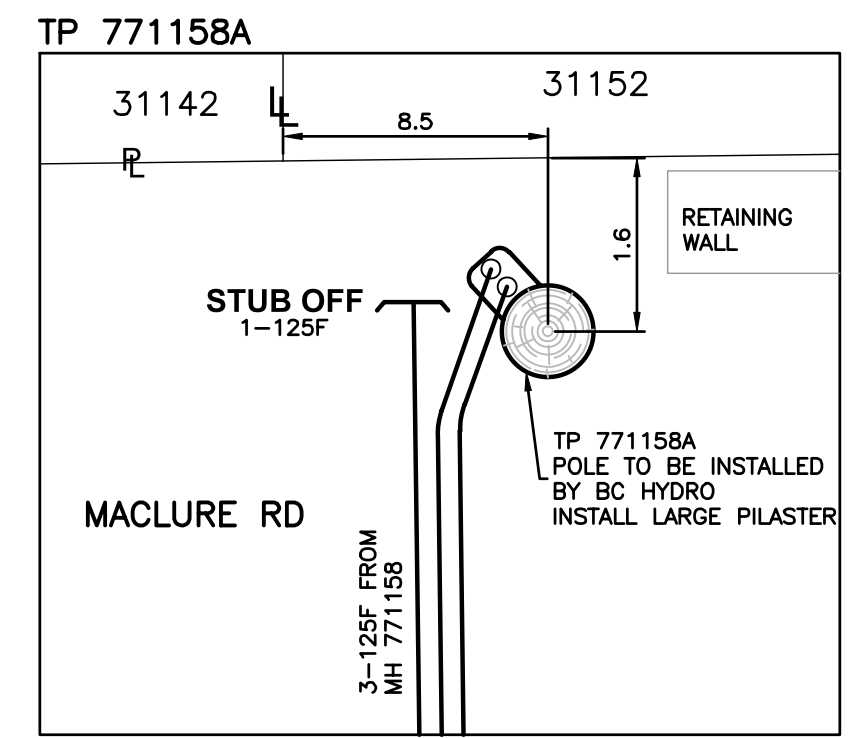
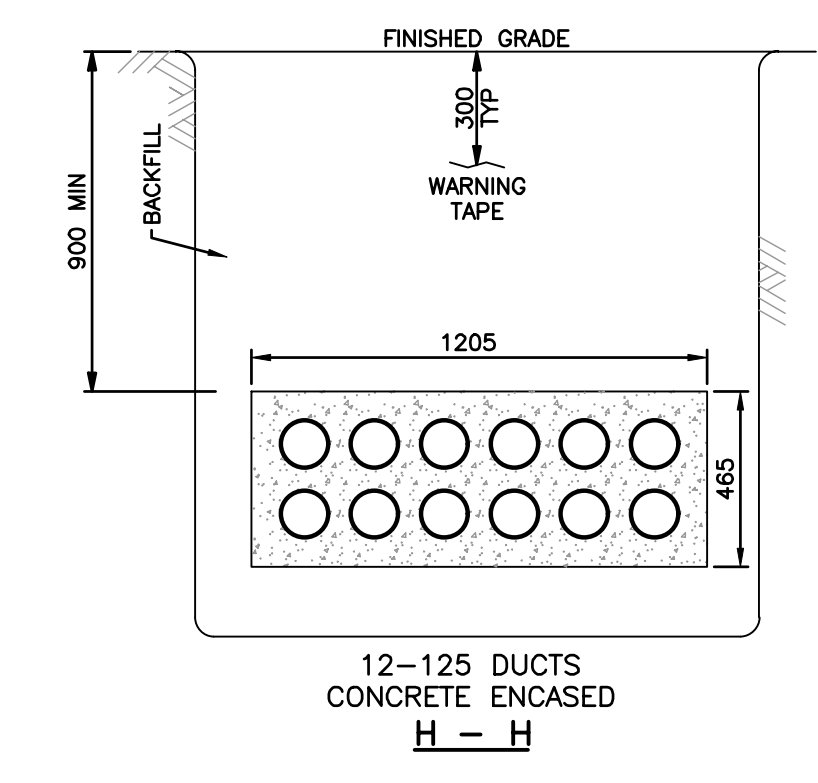
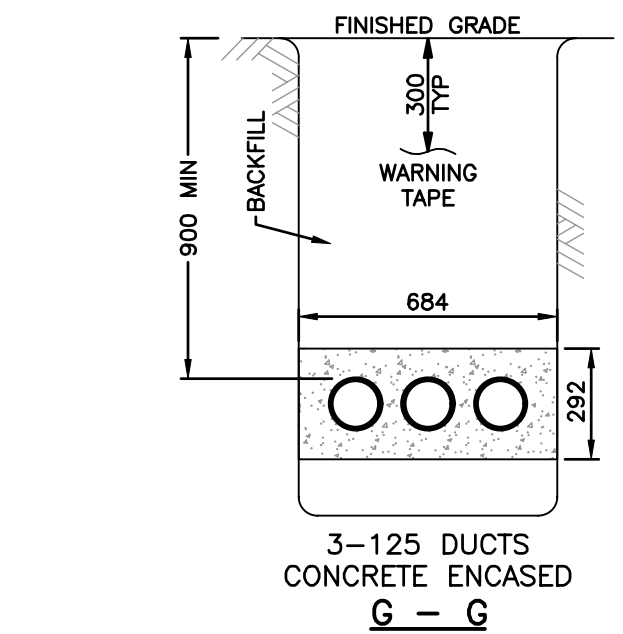
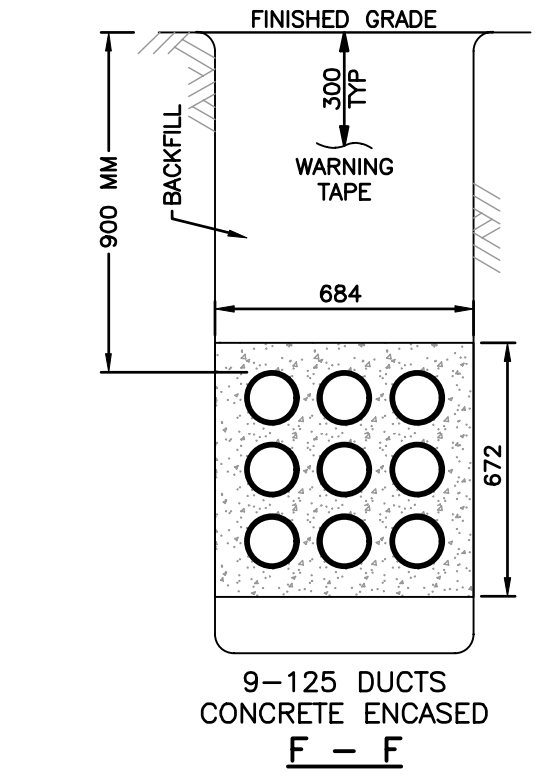
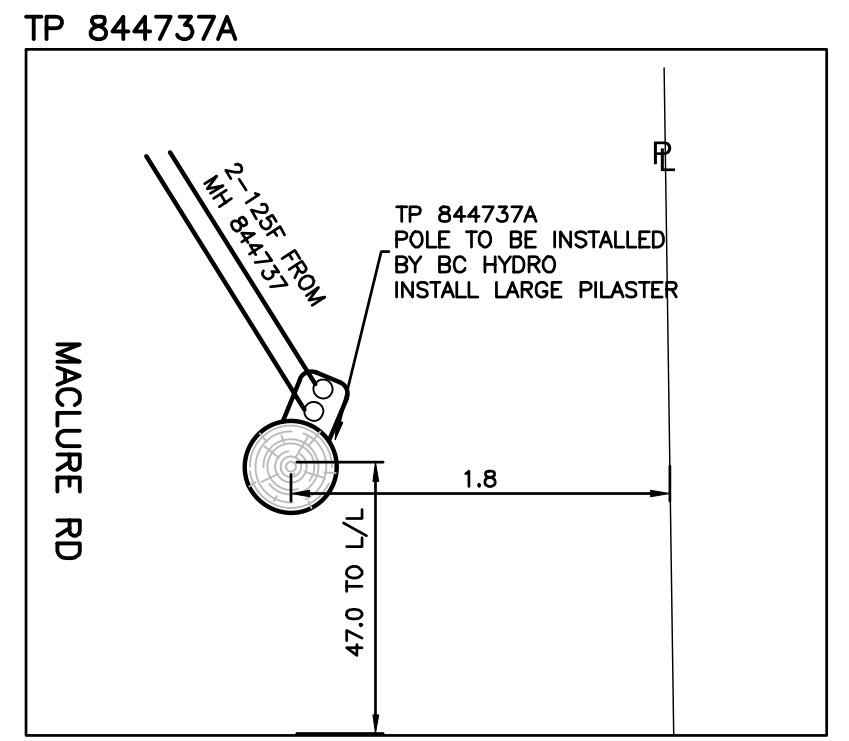
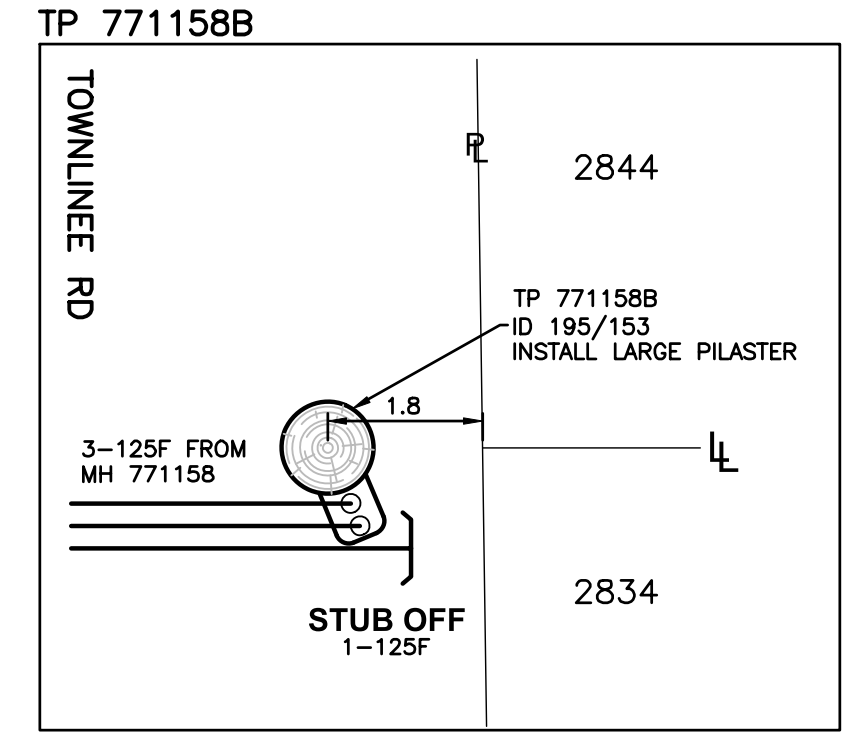
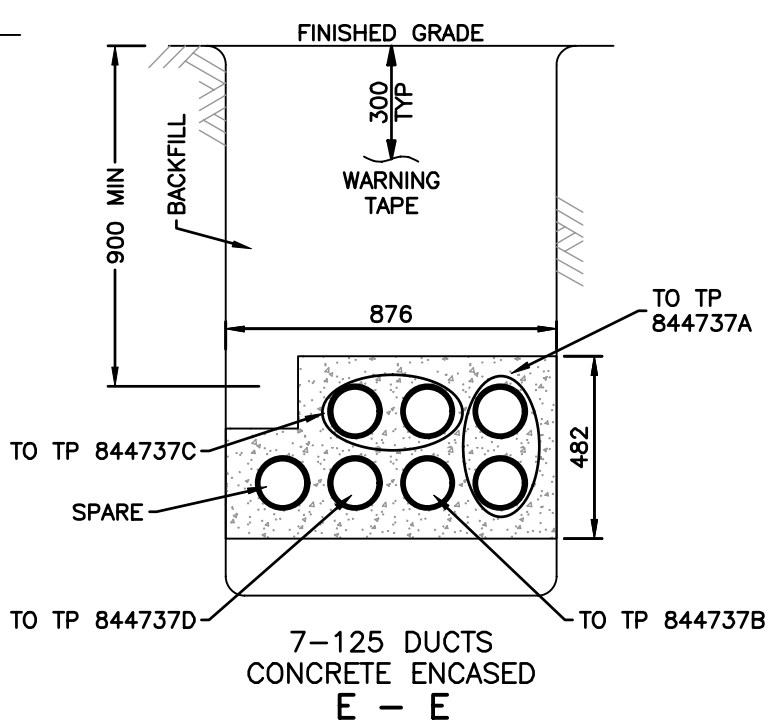
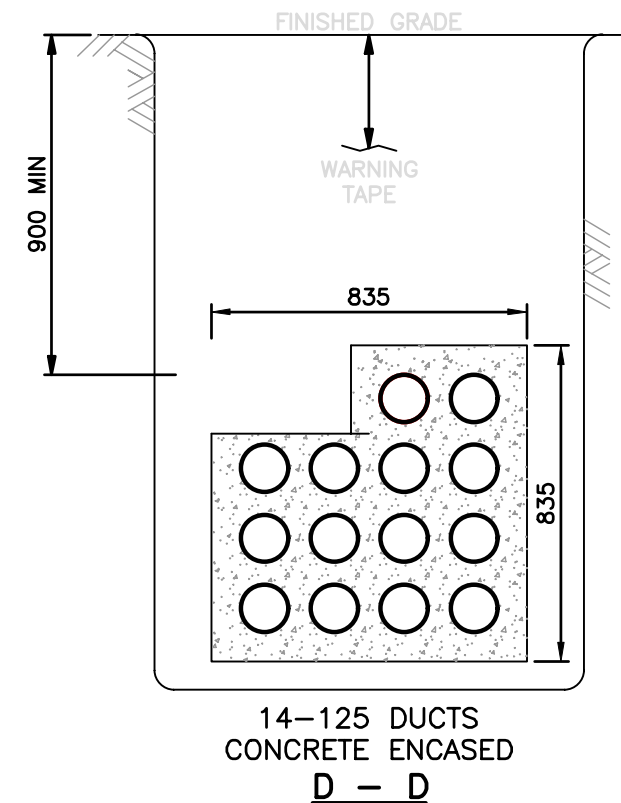
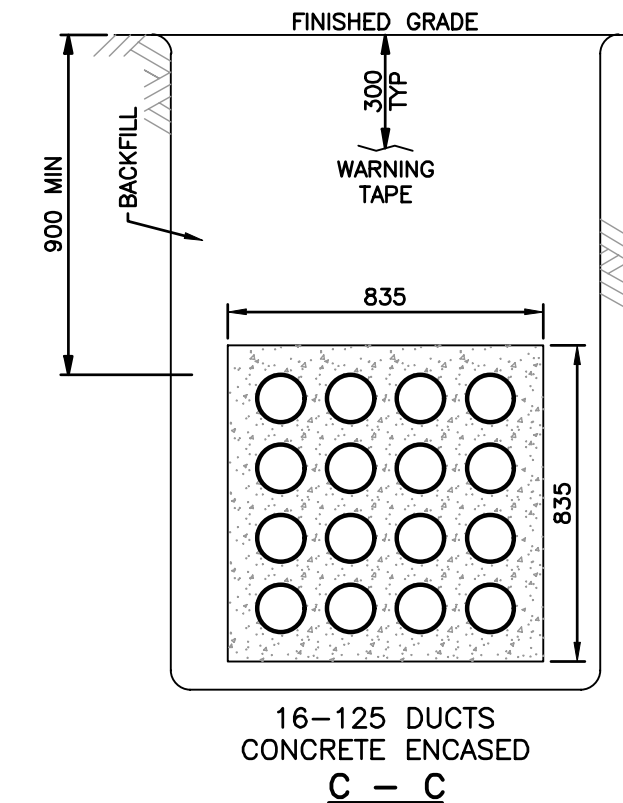
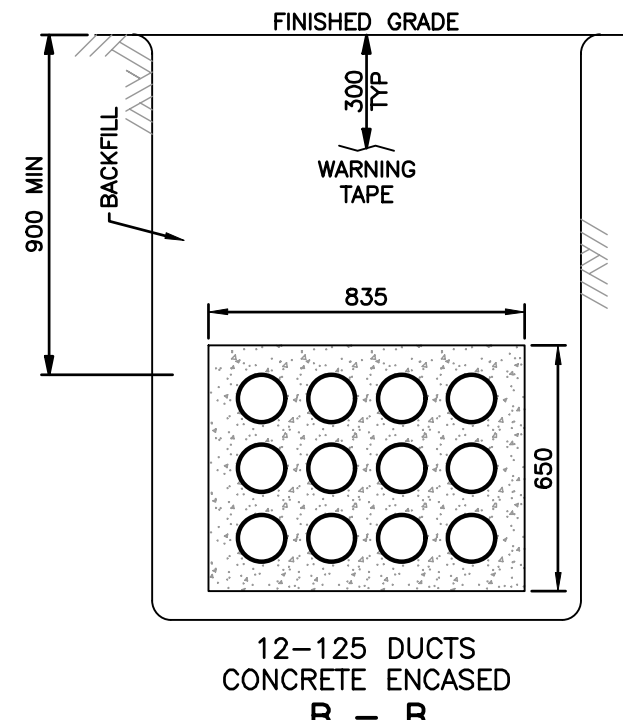
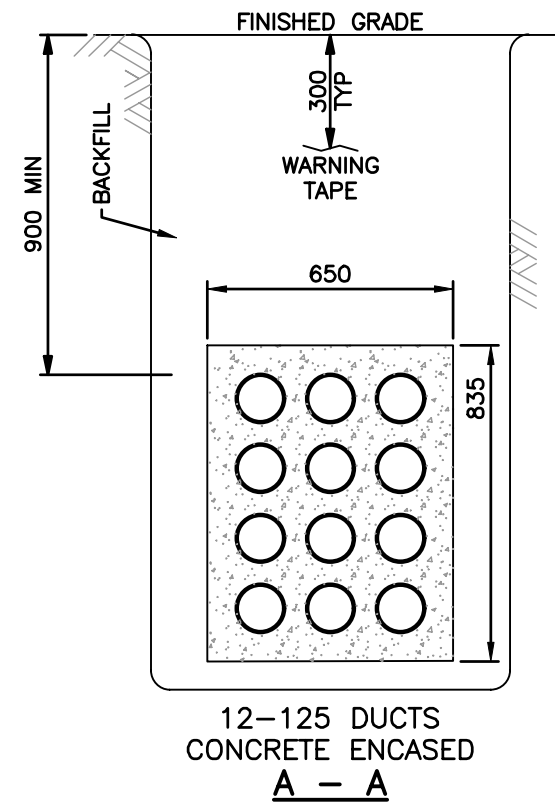
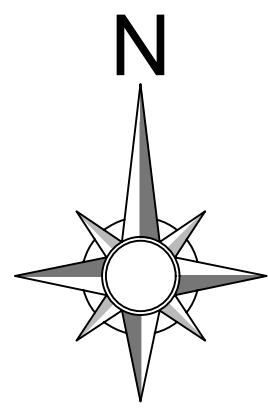
| DSGN | ASANTOS/RENNIS |
|--------------|------------------|
| INDEP CHK | ---- |
| BCH MAP | ---- |
| DESIGN# | 0003858310 |
| DFTG | CMORROW/LOPIRIER |
| WO# | 02100490 |
| DFTG CHK | BBAKER/CMORROW |
| DESIGN# | 000 |
| INSP | MCUAJARDO |
| WO# | 0 |
| REV | ---- |
| ACPT | ---- |

BC Hydro T&D ENGINEERING & DESIGN

FRASER VALLEY EAST
ABBOTSFORD
UNDERGROUND DUCT & STRUCTURES FOR
THREE NEW FEEDERS @
MT LEHMAN SUBSTATION
ABBOTSFORD, BC

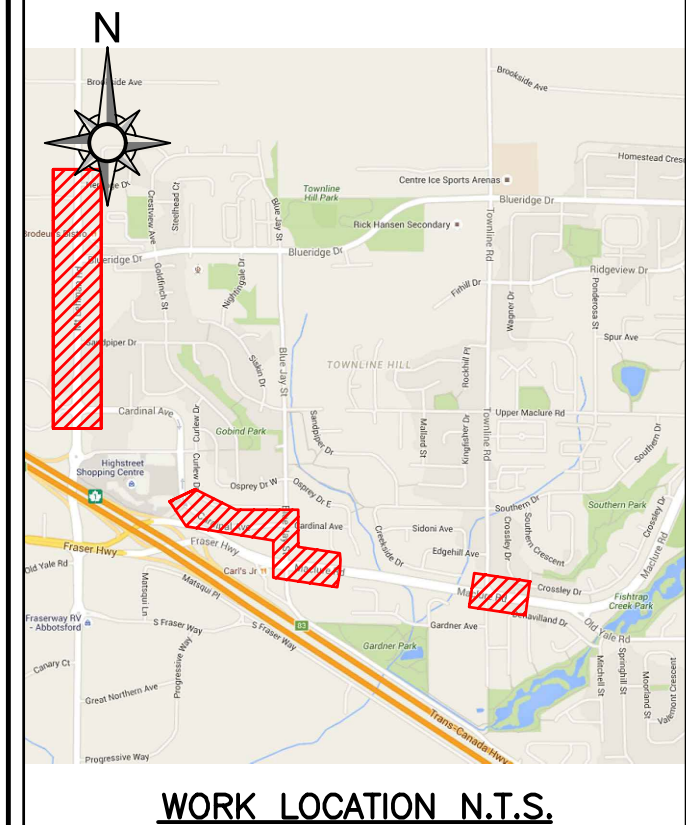
DATE: 2016-04-06 GRID NO: ---- DWG NO: 471-U07-03175 SHEET 8 OF 9 SIZE D R 3

VER 1.72 FEBRUARY 01, 2016



CONCRETE ENCASED REINFORCING DETAIL ES54 H2-04

ISSUED RECORD DRAWING



WORK LOCATION N.T.S.
BC ONE CALL
 CALL BEFORE YOU DIG 1-800-474-6886
 CALL AT LEAST 3 FULL WORKING DAYS BEFORE YOU PLAN TO DIG

- CIVIL NOTES:**
1. BC HYDRO REPRESENTATIVE MUST BE NOTIFIED 48 HOURS PRIOR TO CONSTRUCTION.
 2. ALL WORK TO BE PERFORMED IN ACCORDANCE WITH CLASS OF WORK SPECIFICATION 3323 AND BC HYDRO UNDERGROUND DISTRIBUTION ENGINEERING STANDARDS SERIES ES53 AND ES54.
 3. ANY CHANGES NEED TO HAVE PRIOR APPROVAL OF BC HYDRO REPRESENTATIVE.
 4. ALL CONDUIT INSTALLATION FOR BC HYDRO ON PUBLIC OR PRIVATE PROPERTY SHOULD HAVE 0.9m COVER AND ANY FACTORY BEND MUST HAVE A MINIMUM RADIUS OF 0.9m.
 5. ALL UTILITIES (EXCEPT TELUS) MUST MAINTAIN A 0.9m HORIZONTAL AND 0.3m VERTICAL SEPARATION FROM BC HYDRO DUCT UNLESS DIRECTED OTHERWISE BY BC HYDRO REPRESENTATIVE.
 6. TRANSFORMER MUST BE A MINIMUM OF 1.5m BEHIND NON-MOUNTABLE CURB OR PROTECTED. FINAL NUMBER AND LOCATION OF PROTECTION POSTS TO BE DETERMINED IN THE FIELD BY BC HYDRO REPRESENTATIVE.
 7. OTHER UTILITIES SHOWN ON THE CIVIL DRAWING ARE FOR REFERENCE ONLY. PROVE LOCATION OF ALL UTILITIES IN THE WORK AREA BEFORE CONSTRUCTION. FOR CURRENT INFORMATION CONTACT BC ONE CALL.
 8. FOR TRANSFORMER PAD COUNTERPOISE CLEARANCES TO OTHER UTILITIES AND UNDERGROUND CONDUCTIVE SURFACES, SEE ES54.
 9. ALL OFFSETS INDICATE CENTERLINE OF BC HYDRO PLANT.
 10. MINIMUM OFFSET FOR BC HYDRO DUCTS, IN JOINT TRENCH, FROM PROPERTY LINE IS 1.2m, UNLESS OTHERWISE NOTED.
 11. STUB SERVICE DUCT 1.0m FROM PROPERTY CORNER AND 1.0m INTO THE LOT.
 12. METRES EXPRESSED IN DECIMALS, MILLIMETRES IN WHOLE NUMBERS.

CUSTOM NOTES HERE IF REQUIRED

- CIVIL PLAN LEGEND:**
- PROPOSED DUCT
 - EXISTING DUCT
 - FIELD COMPLETED DUCT
 - SERVICE BOX
 - TERMINAL POLE
 - LOW PROFILE TRANSFORMER (LPT-PYRAMID PAD)
 - LOW PROFILE TRANSFORMER (LPT)
 - PAD MOUNT TRANSFORMER (PMT)
 - 3# & 1# JUNCTION & PULL BOXES (332, 632, 832 & 1232)
 - PRECAST MANHOLE
 - VISTA SWITCH SUBMERSIBLE (VSWB)
 - VISTA SWITCH ABOVE GROUND (VSWA)
- REFER TO ES53 AND ES54 UNDERGROUND STANDARDS

CSA S250 ACCURACY NAD 83 - 10 UTM
 BASE ACCURACY LEVEL: 4 +/- 1000 mm
 ASB ACCURACY LEVEL: 4 +/- 1000 mm

BC Hydro T&D ENGINEERING & DESIGN
FRASER VALLEY EAST
 ABBOTSFORD
 UNDERGROUND DUCT & STRUCTURES FOR
 THREE NEW FEEDERS @
 MT LEHMAN SUBSTATION
 ABBOTSFORD, BC

| REF# | DRAWING NUMBER | NO | REMARKS | DATE | DESIGNED | INDEP CHK | DFTG CHK | INSP | REV | ACPT |
|------|----------------|----|---|------------|-----------|-----------|----------|------|-----|------|
| 5 | ---- | | | | | | | | | |
| 4 | ---- | | | | | | | | | |
| 3 | ---- | 3 | DESIGN: 0003858310 - ISSUED RECORD DRAWING (FINAL INSPCT. 2022-09-14) | 2022-10-05 | MMASSOLIN | LP | AC | MG | | |
| 2 | ---- | 2 | DESIGN: 0003858310 - ISSUED FOR CONSTRUCTION | 2020-01-03 | RENNIS | CM | | | | |
| 1 | ---- | 1 | DESIGN: 0003858310 - SCOPE CHANGE/RE-DESIGN | 2019-12-16 | RENNIS | LP | CM | | | |
| | | | | | | | | | | |

| | |
|-----------|------------------|
| DSGN | ASANTOS/RENNIS |
| INDEP CHK | ---- |
| DESIGN# | 0003858310 |
| DFTG | CMORROW/LPOIRIER |
| DFTG CHK | BBAKER/CMORROW |
| INSP | MCUAJARDO |
| REV | ---- |
| ACPT | ---- |

DATE 2016-04-06 GRID NO ---- DWG NO 471-U07-03175 SHEET 9 of 9 SIZE D R 3