



Ministry of
Transportation
and Infrastructure

PROJECT No. 13253-1001

FRASER VALLEY HIGHWAY 1 CORRIDOR IMPROVEMENT PROGRAM

HIGHWAY 1 - MAINLINE WEST

DRAWING PACKAGE 1

HIGHWAY 1 SIX LANING - LEFEUVRE ROAD TO ROSS ROAD UTILITY COORDINATION PLAN

I. PILKINGTON, CHIEF ENGINEER

DRAWING INDEX
R1-1105-1101UT to 1112UT

UTILITY COORDINATION PLAN

FOR REFERENCE ONLY

FOR CLEARING AND GRUBBING
REFER TO R1-1105-131 TO -144 (TYP.)

FOR MULTI-USE PATHWAY PROFILES
REFER TO R1-1105-231 TO -239 (TYP.)

FOR TYPICAL ROADWAY SECTIONS & DETAILS
REFER TO 300 SERIES DWG's (TYP.)

FOR GEOMETRICS AND LANING
REFER TO 400 SERIES DWG's (TYP.)

FOR SPOT ELEVATIONS
REFER TO 500 SERIES DWG's (TYP.)

FOR PAVEMENT MARKINGS AND SIGNING
REFER TO 600 SERIES DWG's (TYP.)

FOR DRAINAGE, CULVERTS, AND STORM SEWER
REFER TO 700 SERIES DWG's (TYP.)

FOR PROPOSED UNDERGROUND UTILITY RELOCATIONS
REFER TO 800 SERIES DWG's (TYP.)

PROPOSED UNDERGROUND ELECTRICAL,
STREET LIGHTING, AND I.T.S. EQUIPMENT.
REFER TO 1500 DRAWINGS SERIES (TYP.)

POTENTIAL RELOCATION:
EXISTING UNDERGROUND TELUS FIBER OPTIC UTILITY
REFER TO R1-1105-1130EXTEL TO -1153EXTEL, AND
REFER TO TELUS DESIGN (T.B.D.), TYP.

RELOCATE EXISTING BC HYDRO UTILITY POLE
REFER TO BC HYDRO DESIGN (T.B.D.)

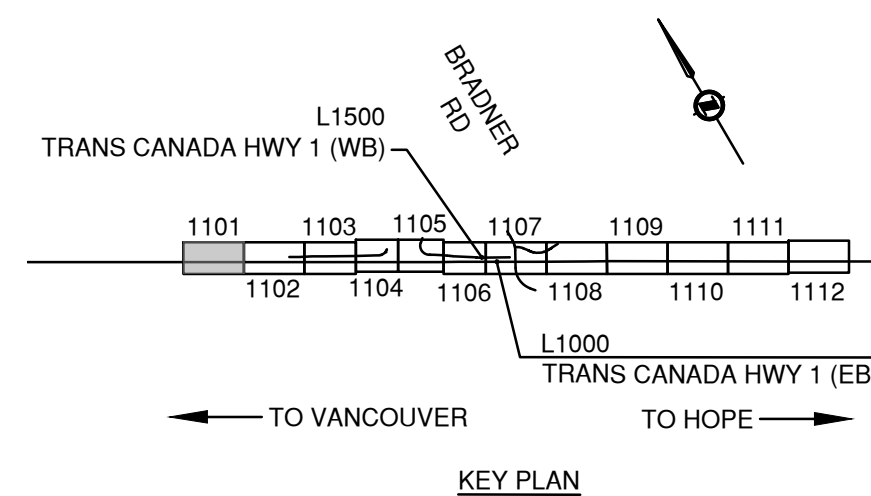
REMOVE AND RELOCATE
EXISTING FENCE (TYP.)

RELOCATE EXISTING ROGERS UNDERGROUND FIBER
OPTIC UTILITY. REFER TO 1500 SERIES DWG'S AND
R1-1105-1131EX_MOTIFBR TO -1152EX_MOTIFBR (TYP.)

ADJUST EXISTING ROGERS UTILITY
MANHOLE TO SUIT DESIGN SURFACE
REFER TO 1500 SERIES DWG's (TYP.)

NOTE:
EXISTING UNDERGROUND UTILITIES HAVE BEEN DERIVED FROM AVAILABLE RECORD
DRAWINGS AND U/G UTILITY PRELOCATE INVESTIGATION. THIS PLAN & PROFILE MUST
ONLY BE UTILIZED AS A REFERENCE UNTIL FIELD CONFIRMATIONS HAVE BEEN
COMPLETED BY THE CONTRACTOR TO VERIFY THE INFORMATION PRESENTED.

LEGEND	
— ABANDON AND FILL CULVERT	— REMOVE AND DISPOSE CULVERT
— WATERMAIN	— OVERHEAD/CUSTOM SIGNAGE
— SANITARY MAIN	— 2-POST SIGNAGE
— STORM MAIN / DRAINAGE	— LAMP STANDARD
— UNDERGROUND TELUS FIBRE	— UTILITY MARKER POLE
— UNDERGROUND ROGERS FIBRE	— MAILBOX
— UNDERGROUND BC HYDRO ELECTRICAL	— DELINEATOR POSTS
— FORTIS BC	— JUNCTION BOX
— EXISTING FENCE	— TRAFFIC SIGNAGE
— UNDERGROUND MoTi ELECTRICAL	
○ WATERMAIN UTILITIES	
○ SANITARY MAIN UTILITIES	
○ STORM MAIN / DRAINAGE UTILITIES	
○ TELUS UTILITIES	
○ ROGERS UTILITIES	
○ BC HYDRO UTILITIES	
○ FORTIS BC UTILITIES	
○ MoTi UTILITIES	



ISL		SUITE 201, 8506 - 200 STREET LANGLEY, BRITISH COLUMBIA, V2Y 0M1 PH : 604.371.0091 FAX : 604.371.0098	
SCALE 0 5 1:500 25m		CAD FILENAME R1-1105-1101-1108UTC.DWG	FILE NUMBER 33038
		PLOT DATE 2024-02-23	
REV	DATE	REVISIONS	NAME
PA	2022-04-25	ISSUED FOR 50% FUNCTIONAL DESIGN	B. BARKER
PB	2022-09-26	ISSUED FOR 100% FUNCTIONAL DESIGN	B. BARKER
PC	2023-06-23	ISSUED FOR 50% DETAIL DESIGN	B. BARKER
PD	2023-12-01	ISSUED FOR 100% DETAILED DESIGN	B. BARKER
PE	2024-01-26	DRAFT ISSUED FOR TENDER	B. BARKER
PF	2024-02-29	ISSUED FOR TENDER	B. BARKER

BRITISH COLUMBIA

MINISTRY OF TRANSPORTATION
AND INFRASTRUCTURE

SOUTH COAST REGION
HIGHWAY DESIGN AND GEOMATICS ENGINEERING

UTILITY COORDINATION PLAN

HIGHWAY 1 - MAINLINE WEST
HIGHWAY 1 SIX LANING - LEFEUVRE ROAD TO ROSS ROAD

DESIGNED	B. BARKER	DATE	2024-02-29
QUALITY CONTROL	K. TERNESS	DATE	2024-02-29
QUALITY ASSURANCE	G. NGIENG	DATE	2024-02-29
DRAWN	S. DEDDENS	DATE	2024-02-29

PROJECT NUMBER	REG	DRAWING NUMBER	REV
13253-1001	1	R1-1105-1101UT	PF

PLOT DATE: 2024/02/23 G:\Projects\33000\33000\33036_AE_Hwy1_264-Whatcom02_CADD\WA07_Hwy1_MLWDrawingProduction\1100_SubDisciplines\Utilities-Reference\1100-UTC_Utility_Coordination\1105-1101-1108UTC.dwg

MATCH LINE SEE DWG No. R1-1105-1102UT

FOR CLEARING AND GRUBBING
REFER TO R1-1105-131 TO -144 (TYP.)

FOR MULTI-USE PATHWAY PROFILES
REFER TO R1-1105-231 TO -239 (TYP.)

FOR TYPICAL ROADWAY SECTIONS & DETAILS
REFER TO 300 SERIES DWG's (TYP.)

FOR GEOMETRICS AND LANING
REFER TO 400 SERIES DWG's (TYP.)

FOR SPOT ELEVATIONS
REFER TO 500 SERIES DWG's (TYP.)

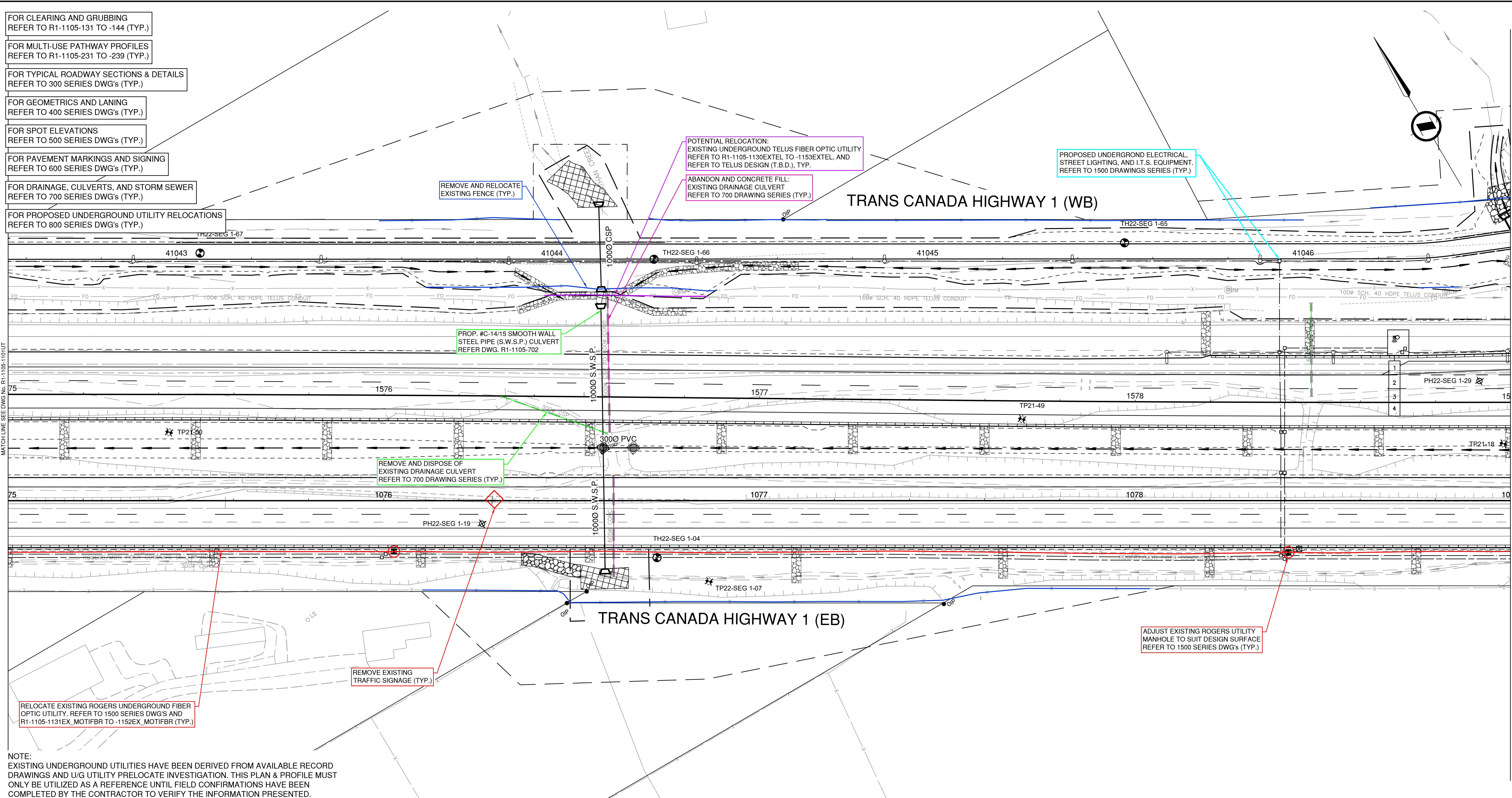
FOR PAVEMENT MARKINGS AND SIGNING
REFER TO 600 SERIES DWG's (TYP.)

FOR DRAINAGE, CULVERTS, AND STORM SEWER
REFER TO 700 SERIES DWG's (TYP.)

FOR PROPOSED UNDERGROUND UTILITY RELOCATIONS
REFER TO 800 SERIES DWG's (TYP.)

FOR PROPOSED UNDERGROUND UTILITY RELOCATIONS
REFER TO 800 SERIES DWG's (TYP.)

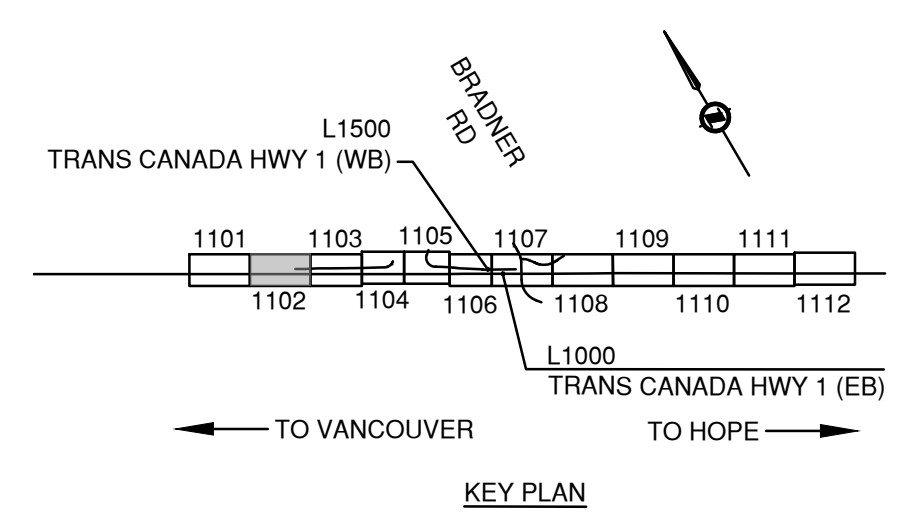
PLOT DATE: 2024/02/23 G:\Projects\33000\33000\33036_AE_Hwy1_264-Whatcom02_CADD\WA07_Hwy1_MLWDrawingProduction\1100_SubDisciplines\Utilities-Reference\1100-UTC_Utility_Coordination\R1-1105-1101-1108UTC.dwg



NOTE:
EXISTING UNDERGROUND UTILITIES HAVE BEEN DERIVED FROM AVAILABLE RECORD DRAWINGS AND U/G UTILITY PRELOCATE INVESTIGATION. THIS PLAN & PROFILE MUST ONLY BE UTILIZED AS A REFERENCE UNTIL FIELD CONFIRMATIONS HAVE BEEN COMPLETED BY THE CONTRACTOR TO VERIFY THE INFORMATION PRESENTED.

LEGEND

— ABANDON AND FILL CULVERT	○ WATERMAIN UTILITIES	— REMOVE AND DISPOSE CULVERT
— WATERMAIN	○ SANITARY MAIN UTILITIES	○ OVERHEAD/CUSTOM SIGNAGE
— SANITARY MAIN	○ STORM MAIN / DRAINAGE UTILITIES	○ 2-POST SIGNAGE
— STORM MAIN / DRAINAGE	○ TELUS UTILITIES	○ LAMP STANDARD
— UNDERGROUND TELUS FIBRE	○ ROGERS UTILITIES	○ UTILITY MARKER POLE
— UNDERGROUND ROGERS FIBRE	○ BC HYDRO UTILITIES	○ MAILBOX
— UNDERGROUND BC HYDRO ELECTRICAL	○ FORTIS BC UTILITIES	○ DELINEATOR POSTS
— FORTIS BC	○ MoTI UTILITIES	○ JUNCTION BOX
— EXISTING FENCE		○ TRAFFIC SIGNAGE
— UNDERGROUND MoTI ELECTRICAL		



ISL		SUITE 201, 8506 - 200 STREET LANGLEY, BRITISH COLUMBIA, V2Y 0M1 PH : 604.371.0091 FAX : 604.371.0098	
SCALE 0 5 1:500 25m		CAD FILENAME R1-1105-1101-1108UTC.DWG	
		FILE NUMBER 33036	
		PLOT DATE 2024-02-23	
REV	DATE	REVISIONS	NAME
PA	2022-04-25	ISSUED FOR 50% FUNCTIONAL DESIGN	B. BARKER
PB	2022-09-26	ISSUED FOR 100% FUNCTIONAL DESIGN	B. BARKER
PC	2023-06-23	ISSUED FOR 50% DETAIL DESIGN	B. BARKER
PD	2023-12-01	ISSUED FOR 100% DETAILED DESIGN	B. BARKER
PE	2024-01-26	DRAFT ISSUED FOR TENDER	B. BARKER
PF	2024-02-29	ISSUED FOR TENDER	B. BARKER

BRITISH COLUMBIA MINISTRY OF TRANSPORTATION AND INFRASTRUCTURE
SOUTH COAST REGION
HIGHWAY DESIGN AND GEOMATICS ENGINEERING

UTILITY COORDINATION PLAN
HIGHWAY 1 - MAINLINE WEST
HIGHWAY 1 SIX LANING - LEFUEVRE ROAD TO ROSS ROAD

DESIGNED	B. BARKER	DATE	2024-02-29
QUALITY CONTROL	K. TERNESS	DATE	2024-02-29
QUALITY ASSURANCE	G. NGIENG	DATE	2024-02-29
DRAWN	S. DEDDENS	DATE	2024-02-29

PROJECT NUMBER	REG	DRAWING NUMBER	REV
13253-1001	1	R1-1105-1102UT	PF

FOR CLEARING AND GRUBBING
REFER TO R1-1105-131 TO -144 (TYP.)

FOR MULTI-USE PATHWAY PROFILES
REFER TO R1-1105-231 TO -239 (TYP.)

FOR TYPICAL ROADWAY SECTIONS & DETAILS
REFER TO 300 SERIES DWG's (TYP.)

FOR GEOMETRICS AND LANING
REFER TO 400 SERIES DWG's (TYP.)

FOR SPOT ELEVATIONS
REFER TO 500 SERIES DWG's (TYP.)

FOR PAVEMENT MARKINGS AND SIGNING
REFER TO 600 SERIES DWG's (TYP.)

FOR DRAINAGE, CULVERTS, AND STORM SEWER
REFER TO 700 SERIES DWG's (TYP.)

FOR PROPOSED UNDERGROUND UTILITY RELOCATIONS
REFER TO 800 SERIES DWG's (TYP.)

POTENTIAL RELOCATION:
EXISTING UNDERGROUND TELUS FIBER OPTIC UTILITY
REFER TO R1-1105-1130EXTEL TO -1153EXTEL, AND
REFER TO TELUS DESIGN (T.B.D.), TYP.

PROPOSED UNDERGROUND ELECTRICAL,
STREET LIGHTING, AND I.T.S. EQUIPMENT.
REFER TO 1500 DRAWINGS SERIES (TYP.)

REMOVE AND DISPOSE OF
EXISTING DRAINAGE CULVERT
REFER TO 700 DRAWING SERIES (TYP.)

RELOCATE OR REPLACE EXISTING UTILITY MARKER POST (TYP.)

PROP. NATHAN CREEK CULVERT No. 10527
REFER TO DWG. R1-1105-703

RELOCATE EXISTING ROGERS UNDERGROUND FIBER
OPTIC UTILITY. REFER TO 1500 SERIES DWG'S AND
R1-1105-1131EX_MOTIFBR TO -1152EX_MOTIFBR (TYP.)

PROPOSED HORIZONTAL
DIRECTIONAL DRILL.
REFER TO 1500 SERIES DWG'S

REMOVE EXISTING
TRAFFIC SIGNAGE (TYP.)

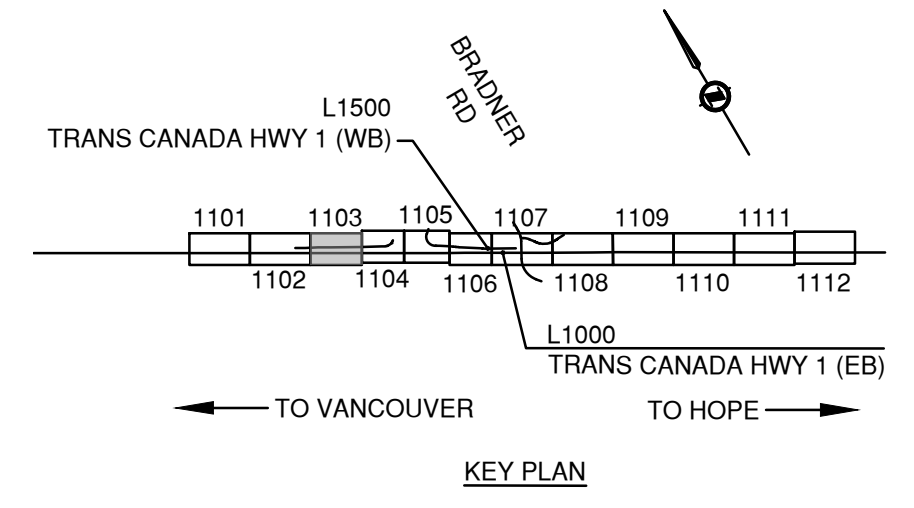
ABANDON AND CONCRETE FILL:
EXISTING DRAINAGE CULVERT
REFER TO 700 DRAWING SERIES (TYP.)

REMOVE AND REINSTATE
EXISTING FENCE (TYP.)

ADJUST EXISTING ROGERS UTILITY
MANHOLE TO SUIT DESIGN SURFACE
REFER TO 1500 SERIES DWG's (TYP.)

NOTE:
EXISTING UNDERGROUND UTILITIES HAVE BEEN DERIVED FROM AVAILABLE RECORD
DRAWINGS AND U/G UTILITY PRELOCATE INVESTIGATION. THIS PLAN & PROFILE MUST
ONLY BE UTILIZED AS A REFERENCE UNTIL FIELD CONFIRMATIONS HAVE BEEN
COMPLETED BY THE CONTRACTOR TO VERIFY THE INFORMATION PRESENTED.

LEGEND	
— ABANDON AND FILL CULVERT	○ WATERMAIN UTILITIES
— WATERMAIN	○ SANITARY MAIN UTILITIES
— SANITARY MAIN	○ STORM MAIN / DRAINAGE UTILITIES
— STORM MAIN / DRAINAGE	○ TELUS UTILITIES
— UNDERGROUND TELUS FIBRE	○ ROGERS UTILITIES
— UNDERGROUND ROGERS FIBRE	○ BC HYDRO UTILITIES
— UNDERGROUND BC HYDRO ELECTRICAL	○ FORTIS BC UTILITIES
— FORTIS BC	○ MoTi UTILITIES
— EXISTING FENCE	○ DELINEATOR POSTS
— UNDERGROUND MoTi ELECTRICAL	□ JUNCTION BOX
— REMOVE AND DISPOSE CULVERT	◇ OVERHEAD/CUSTOM SIGNAGE
— OVERHEAD/CUSTOM SIGNAGE	○ 2-POST SIGNAGE
— 2-POST SIGNAGE	○ LAMP STANDARD
— LAMP STANDARD	○ UTILITY MARKER POLE
— UTILITY MARKER POLE	○ MAILBOX
— MAILBOX	○ DELINEATOR POSTS
— DELINEATOR POSTS	□ JUNCTION BOX
— JUNCTION BOX	◇ TRAFFIC SIGNAGE
— TRAFFIC SIGNAGE	



ISL SUITE 201, 8506 - 200 STREET
LANGLEY, BRITISH COLUMBIA, V2Y 0M1
PH : 604.371.0091 FAX : 604.371.0098

BRITISH COLUMBIA MINISTRY OF TRANSPORTATION AND INFRASTRUCTURE
SOUTH COAST REGION
HIGHWAY DESIGN AND GEOMETRICS ENGINEERING

SCALE 0 5 1:500 25m CAD FILENAME R1-1105-1101-1108UTC.DWG
FILE NUMBER 33038 PLOT DATE 2024-02-23

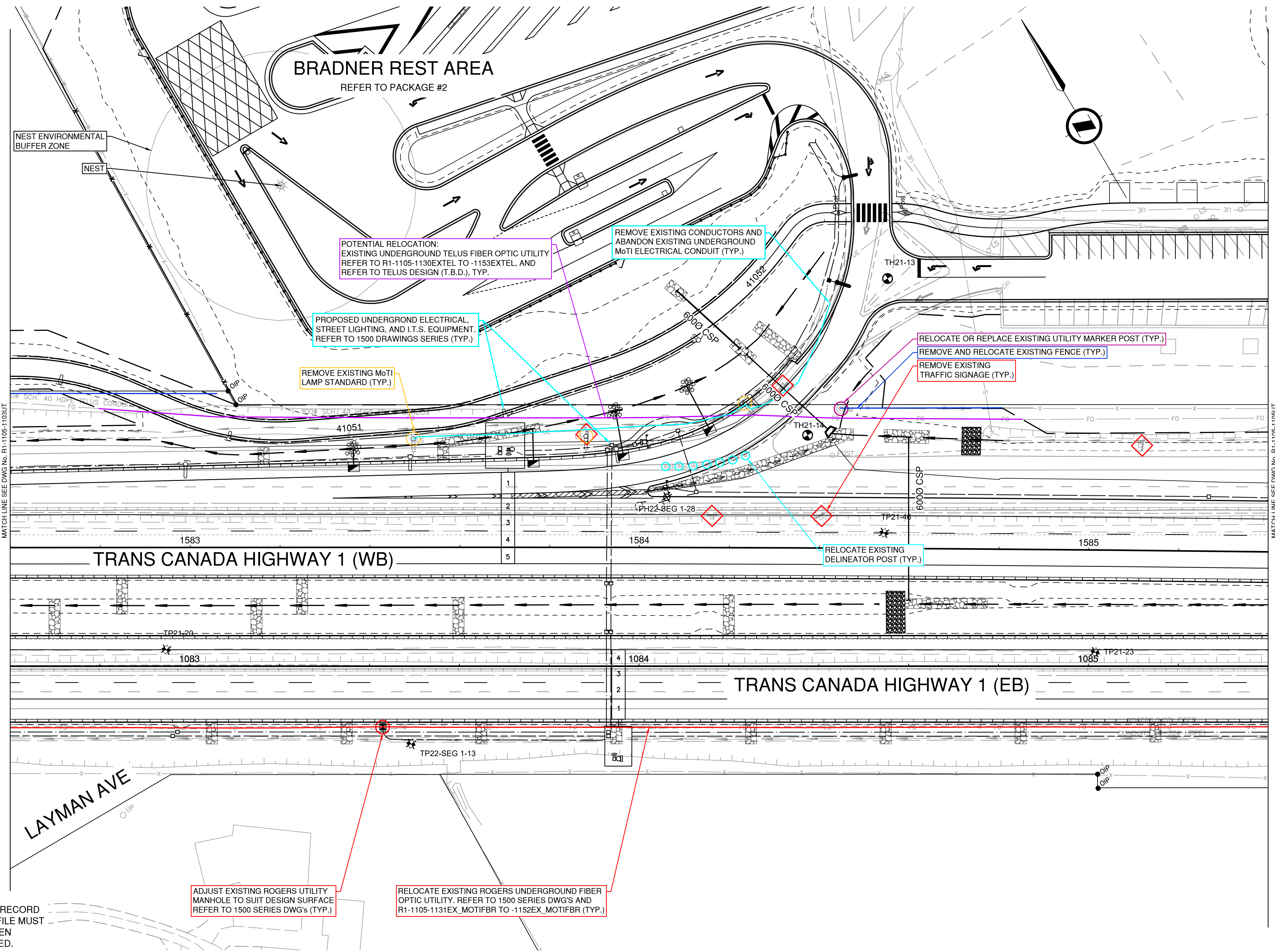
UTILITY COORDINATION PLAN
HIGHWAY 1 - MAINLINE WEST
HIGHWAY 1 SIX LANING - LEFEUVRE ROAD TO ROSS ROAD

REV	DATE	REVISIONS	NAME
PA	2022-04-25	ISSUED FOR 50% FUNCTIONAL DESIGN	B. BARKER
PB	2022-09-26	ISSUED FOR 100% FUNCTIONAL DESIGN	B. BARKER
PC	2023-06-23	ISSUED FOR 50% DETAILED DESIGN	B. BARKER
PD	2023-12-01	ISSUED FOR 100% DETAILED DESIGN	B. BARKER
PE	2024-01-26	DRAFT ISSUED FOR TENDER	B. BARKER
PF	2024-02-29	ISSUED FOR TENDER	B. BARKER

DESIGNED	B. BARKER	DATE	2024-02-29
QUALITY CONTROL	K. TERNESS	DATE	2024-02-29
QUALITY ASSURANCE	G. NGIENG	DATE	2024-02-29
DRAWN	S. DEDDENS	DATE	2024-02-29
PROJECT NUMBER	REG	DRAWING NUMBER	REV
13253-1001	1	R1-1105-1103UT	PF

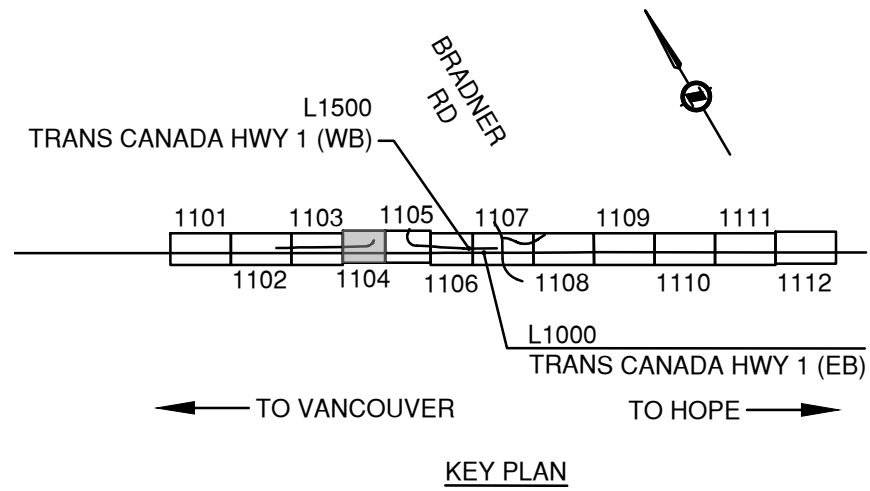
PLOT DATE: 2024/02/23 G:\Projects\33000\33000\33036_AE_Hwy1_264-Whatcom02_CADD\WA07_Hwy1_MLW\DrawingProduction\1100_SubDisciplines\Utilities-Reference\1100-UTC_Utility_Coordination\R1-1105-1101-1108UTC.dwg

- FOR CLEARING AND GRUBBING
REFER TO R1-1105-131 TO -144 (TYP.)
- FOR MULTI-USE PATHWAY PROFILES
REFER TO R1-1105-231 TO -239 (TYP.)
- FOR TYPICAL ROADWAY SECTIONS & DETAILS
REFER TO 300 SERIES DWG's (TYP.)
- FOR GEOMETRICS AND LANING
REFER TO 400 SERIES DWG's (TYP.)
- FOR SPOT ELEVATIONS
REFER TO 500 SERIES DWG's (TYP.)
- FOR PAVEMENT MARKINGS AND SIGNING
REFER TO 600 SERIES DWG's (TYP.)
- FOR DRAINAGE, CULVERTS, AND STORM SEWER
REFER TO 700 SERIES DWG's (TYP.)
- FOR PROPOSED UNDERGROUND UTILITY RELOCATIONS
REFER TO 800 SERIES DWG's (TYP.)



NOTE:
EXISTING UNDERGROUND UTILITIES HAVE BEEN DERIVED FROM AVAILABLE RECORD DRAWINGS AND U/G UTILITY PRELOCATE INVESTIGATION. THIS PLAN & PROFILE MUST ONLY BE UTILIZED AS A REFERENCE UNTIL FIELD CONFIRMATIONS HAVE BEEN COMPLETED BY THE CONTRACTOR TO VERIFY THE INFORMATION PRESENTED.

LEGEND	
ABANDON AND FILL CULVERT	REMOVE AND DISPOSE CULVERT
WATERMAIN	OVERHEAD/CUSTOM SIGNAGE
SANITARY MAIN	2-POST SIGNAGE
STORM MAIN / DRAINAGE	LAMP STANDARD
UNDERGROUND TELUS FIBRE	UTILITY MARKER POLE
UNDERGROUND ROGERS FIBRE	MAILBOX
UNDERGROUND BC HYDRO ELECTRICAL	DELINEATOR POSTS
FORTIS BC	JUNCTION BOX
EXISTING FENCE	TRAFFIC SIGNAGE
UNDERGROUND MoTI ELECTRICAL	
WATERMAIN UTILITIES	
SANITARY MAIN UTILITIES	
STORM MAIN / DRAINAGE UTILITIES	
TELUS UTILITIES	
ROGERS UTILITIES	
BC HYDRO UTILITIES	
FORTIS BC UTILITIES	
MoTI UTILITIES	

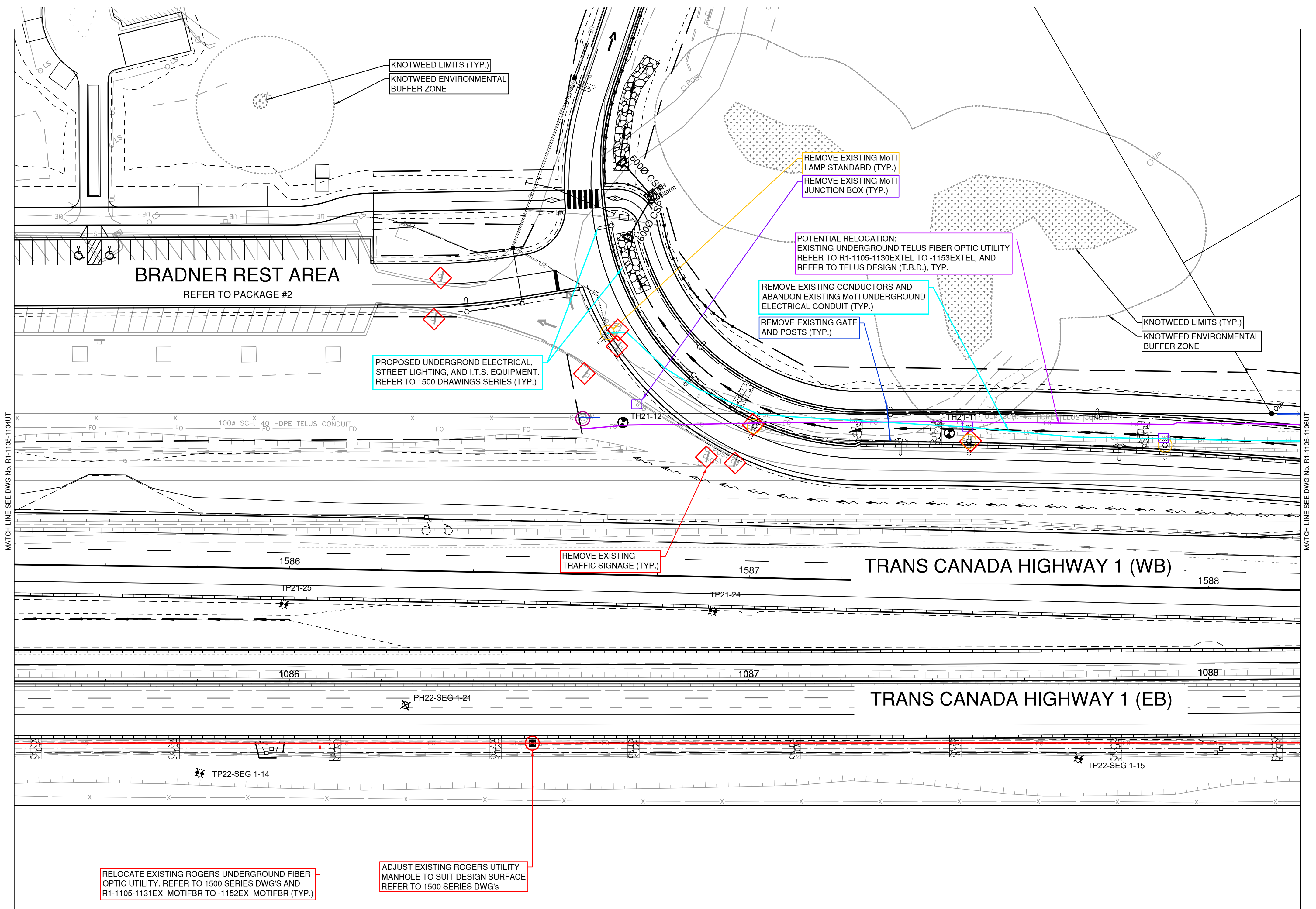


ISL		SUITE 201, 8506 - 200 STREET LANGLEY, BRITISH COLUMBIA, V2Y 0M1 PH : 604.371.0091 FAX : 604.371.0098	
SCALE 0 5 1:500 25m		CAD FILENAME R1-1105-1101-1108UTC.DWG	FILE NUMBER 33038
		PLOT DATE 2024-02-23	
REV	DATE	REVISIONS	NAME
PA	2022-04-25	ISSUED FOR 50% FUNCTIONAL DESIGN	B. BARKER
PB	2022-09-26	ISSUED FOR 100% FUNCTIONAL DESIGN	B. BARKER
PC	2023-06-23	ISSUED FOR 50% DETAIL DESIGN	B. BARKER
PD	2023-12-01	ISSUED FOR 100% DETAILED DESIGN	B. BARKER
PE	2024-01-26	DRAFT ISSUED FOR TENDER	B. BARKER
PF	2024-02-29	ISSUED FOR TENDER	B. BARKER

BRITISH COLUMBIA		MINISTRY OF TRANSPORTATION AND INFRASTRUCTURE	
		SOUTH COAST REGION HIGHWAY DESIGN AND GEOMATICS ENGINEERING	
UTILITY COORDINATION PLAN			
HIGHWAY 1 - MAINLINE WEST HIGHWAY 1 SIX LANING - LEFUEVRE ROAD TO ROSS ROAD			
DESIGNED	B. BARKER	DATE	2024-02-29
QUALITY CONTROL	K. TERNES	DATE	2024-02-29
QUALITY ASSURANCE	G. NGENG	DATE	2024-02-29
DRAWN	S. DEDDENS	DATE	2024-02-29
PROJECT NUMBER	REG	DRAWING NUMBER	REV
13253-1001	1	R1-1105-1104UT	PF

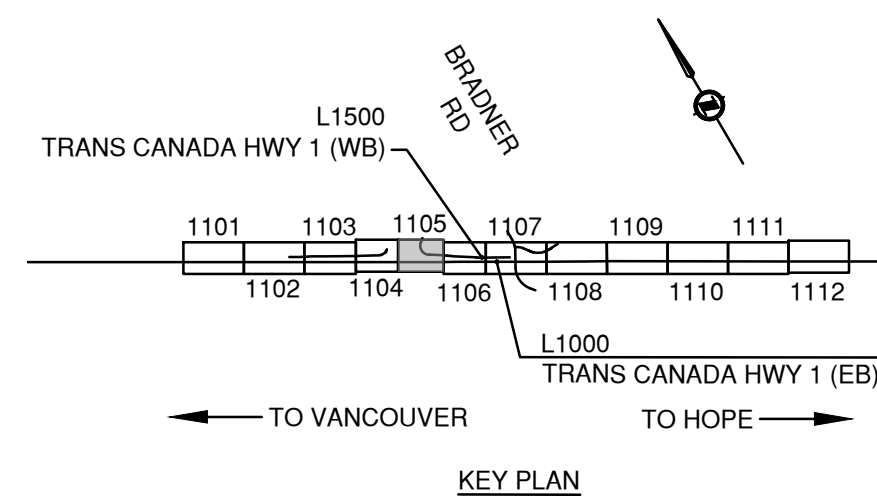
PLOT DATE: 2024/02/23 G:\Projects\33000\33000\33036_AE_Hwy1_264-Whatcom02_CADD\WA07_Hwy1_MLWDrawingProduction\1100_SubDisciplines\Utilities-Reference\1100-UJC_Utility_Coordination\1105-1101-1108UTC.dwg

- FOR CLEARING AND GRUBBING
REFER TO R1-1105-131 TO -144 (TYP.)
- FOR MULTI-USE PATHWAY PROFILES
REFER TO R1-1105-231 TO -239 (TYP.)
- FOR TYPICAL ROADWAY SECTIONS & DETAILS
REFER TO 300 SERIES DWG's (TYP.)
- FOR GEOMETRICS AND LANING
REFER TO 400 SERIES DWG's (TYP.)
- FOR SPOT ELEVATIONS
REFER TO 500 SERIES DWG's (TYP.)
- FOR PAVEMENT MARKINGS AND SIGNING
REFER TO 600 SERIES DWG's (TYP.)
- FOR DRAINAGE, CULVERTS, AND STORM SEWER
REFER TO 700 SERIES DWG's (TYP.)
- FOR PROPOSED UNDERGROUND UTILITY RELOCATIONS
REFER TO 800 SERIES DWG's (TYP.)



NOTE:
EXISTING UNDERGROUND UTILITIES HAVE BEEN DERIVED FROM AVAILABLE RECORD DRAWINGS AND U/G UTILITY PRELOCATE INVESTIGATION. THIS PLAN & PROFILE MUST ONLY BE UTILIZED AS A REFERENCE UNTIL FIELD CONFIRMATIONS HAVE BEEN COMPLETED BY THE CONTRACTOR TO VERIFY THE INFORMATION PRESENTED.

LEGEND	
ABANDON AND FILL CULVERT	REMOVE AND DISPOSE CULVERT
WATERMAIN	OVERHEAD/CUSTOM SIGNAGE
SANITARY MAIN	2-POST SIGNAGE
STORM MAIN / DRAINAGE	LAMP STANDARD
UNDERGROUND TELUS FIBRE	UTILITY MARKER POLE
UNDERGROUND ROGERS FIBRE	MAILBOX
UNDERGROUND BC HYDRO ELECTRICAL	DELINEATOR POSTS
FORTIS BC	JUNCTION BOX
EXISTING FENCE	TRAFFIC SIGNAGE
UNDERGROUND MoTi ELECTRICAL	
WATERMAIN UTILITIES	
SANITARY MAIN UTILITIES	
STORM MAIN / DRAINAGE UTILITIES	
TELUS UTILITIES	
ROGERS UTILITIES	
BC HYDRO UTILITIES	
FORTIS BC UTILITIES	
MoTi UTILITIES	



		SUITE 201, 8506 - 200 STREET LANGLEY, BRITISH COLUMBIA, V2Y 0M1 PH : 604.371.0091 FAX : 604.371.0098	
SCALE 0 5 1:500 25m		CAD FILENAME R1-1105-1101-1108UTC.DWG FILE NUMBER 33038 PLOT DATE 2024-02-23	
REV	DATE	REVISIONS	NAME
PA	2022-04-25	ISSUED FOR 50% FUNCTIONAL DESIGN	B. BARKER
PB	2022-09-26	ISSUED FOR 100% FUNCTIONAL DESIGN	B. BARKER
PC	2023-06-23	ISSUED FOR 50% DETAIL DESIGN	B. BARKER
PD	2023-12-01	ISSUED FOR 100% DETAILED DESIGN	B. BARKER
PE	2024-01-26	DRAFT ISSUED FOR TENDER	B. BARKER
PF	2024-02-29	ISSUED FOR TENDER	B. BARKER

		MINISTRY OF TRANSPORTATION AND INFRASTRUCTURE SOUTH COAST REGION HIGHWAY DESIGN AND GEOMATICS ENGINEERING	
UTILITY COORDINATION PLAN HIGHWAY 1 - MAINLINE WEST HIGHWAY 1 SIX LANING - LEFUEVRE ROAD TO ROSS ROAD			
DESIGNED	B. BARKER	DATE	2024-02-29
QUALITY CONTROL	K. TERNESS	DATE	2024-02-29
QUALITY ASSURANCE	G. NGIENG	DATE	2024-02-29
DRAWN	S. DEDDENS	DATE	2024-02-29
PROJECT NUMBER	REG	DRAWING NUMBER	REV
13253-1001	1	R1-1105-1105UT	PF

FOR CLEARING AND GRUBBING
REFER TO R1-1105-131 TO -144 (TYP.)

FOR MULTI-USE PATHWAY PROFILES
REFER TO R1-1105-231 TO -239 (TYP.)

FOR TYPICAL ROADWAY SECTIONS & DETAILS
REFER TO 300 SERIES DWG's (TYP.)

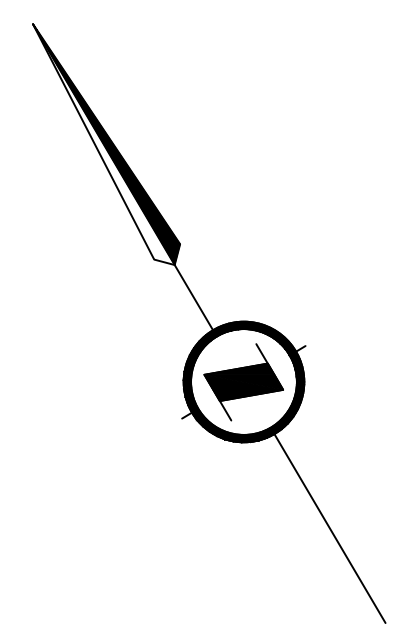
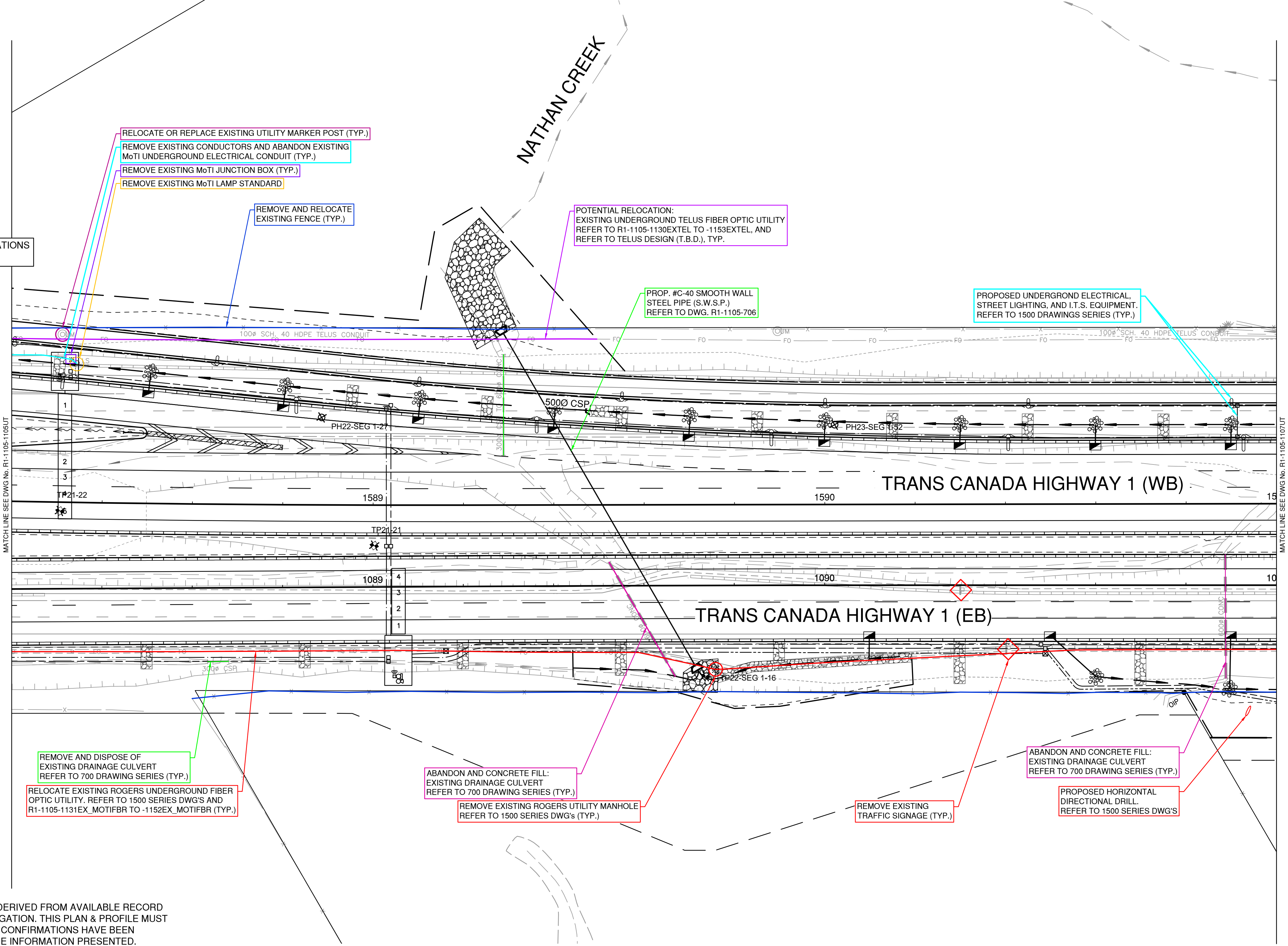
FOR GEOMETRICS AND LANING
REFER TO 400 SERIES DWG's (TYP.)

FOR SPOT ELEVATIONS
REFER TO 500 SERIES DWG's (TYP.)

FOR PAVEMENT MARKINGS AND SIGNING
REFER TO 600 SERIES DWG's (TYP.)

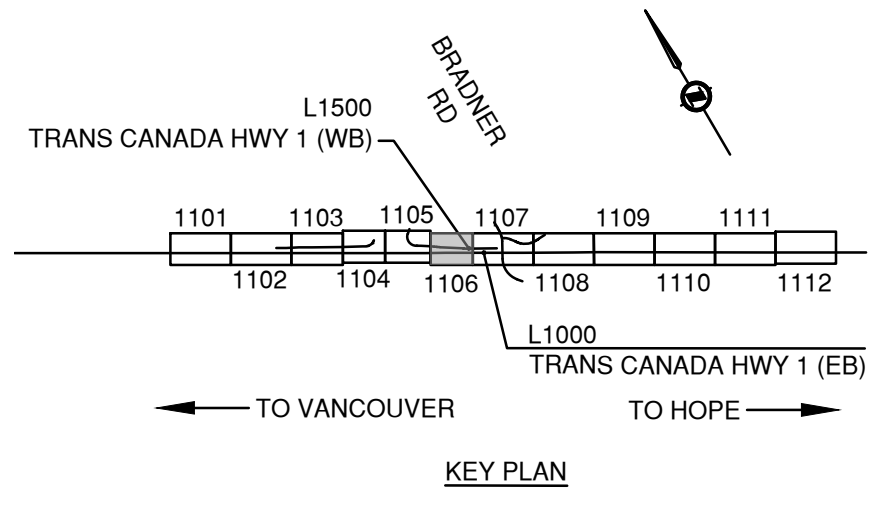
FOR DRAINAGE, CULVERTS, AND STORM SEWER
REFER TO 700 SERIES DWG's (TYP.)

FOR PROPOSED UNDERGROUND UTILITY RELOCATIONS
REFER TO 800 SERIES DWG's (TYP.)



NOTE:
EXISTING UNDERGROUND UTILITIES HAVE BEEN DERIVED FROM AVAILABLE RECORD DRAWINGS AND U/G UTILITY PRELOCATE INVESTIGATION. THIS PLAN & PROFILE MUST ONLY BE UTILIZED AS A REFERENCE UNTIL FIELD CONFIRMATIONS HAVE BEEN COMPLETED BY THE CONTRACTOR TO VERIFY THE INFORMATION PRESENTED.

LEGEND		
— ABANDON AND FILL CULVERT	○ WATERMAIN UTILITIES	— REMOVE AND DISPOSE CULVERT
— WATERMAIN	○ SANITARY MAIN UTILITIES	— OVERHEAD/CUSTOM SIGNAGE
— SANITARY MAIN	○ STORM MAIN / DRAINAGE UTILITIES	○ 2-POST SIGNAGE
— STORM MAIN / DRAINAGE	○ TELUS UTILITIES	○ LAMP STANDARD
— UNDERGROUND TELUS FIBRE	○ ROGERS UTILITIES	○ UTILITY MARKER POLE
— UNDERGROUND ROGERS FIBRE	○ BC HYDRO UTILITIES	○ MAILBOX
— UNDERGROUND BC HYDRO ELECTRICAL	○ FORTIS BC UTILITIES	○ DELINEATOR POSTS
— FORTIS BC	○ MoTI UTILITIES	□ JUNCTION BOX
— EXISTING FENCE		◇ TRAFFIC SIGNAGE
— UNDERGROUND MoTI ELECTRICAL		



		SUITE 201, 8506 - 200 STREET LANGLEY, BRITISH COLUMBIA, V2Y 0M1 PH : 604.371.0091 FAX : 604.371.0098	
SCALE 0 5 1:500 25m		CAD FILENAME R1-1105-1101-1106UTC.DWG FILE NUMBER 33038 PLOT DATE 2024-02-23	
REV	DATE	REVISIONS	NAME
PA	2022-04-25	ISSUED FOR 50% FUNCTIONAL DESIGN	B. BARKER
PB	2022-09-26	ISSUED FOR 100% FUNCTIONAL DESIGN	B. BARKER
PC	2023-06-23	ISSUED FOR 50% DETAIL DESIGN	B. BARKER
PD	2023-12-01	ISSUED FOR 100% DETAILED DESIGN	B. BARKER
PE	2024-01-26	DRAFT ISSUED FOR TENDER	B. BARKER
PF	2024-02-29	ISSUED FOR TENDER	B. BARKER

		MINISTRY OF TRANSPORTATION AND INFRASTRUCTURE SOUTH COAST REGION HIGHWAY DESIGN AND GEOMATICS ENGINEERING	
UTILITY COORDINATION PLAN HIGHWAY 1 - MAINLINE WEST HIGHWAY 1 SIX LANING - LEFUEVRE ROAD TO ROSS ROAD			
DESIGNED	B. BARKER	DATE	2024-02-29
QUALITY CONTROL	K. TERNESS	DATE	2024-02-29
QUALITY ASSURANCE	G. NGIENG	DATE	2024-02-29
DRAWN	S. DEDDENS	DATE	2024-02-29
PROJECT NUMBER	13253-1001	DRAWING NUMBER	R1-1105-1106UT
REG	1	REV	PF

PLOT DATE: 2024/02/23 G:\Projects\33000\33000\33038_AE_Hwy1_264-Whatcom02_CADD\WA07_Hwy1_MLWDrawingProduction\1100_SubDisciplines\Utilities-Reference\1100-UTC_Utility_Coordination\1105-1101-1106UTC.dwg

- FOR CLEARING AND GRUBBING
REFER TO R1-1105-131 TO -144 (TYP.)
- FOR MULTI-USE PATHWAY PROFILES
REFER TO R1-1105-231 TO -239 (TYP.)
- FOR TYPICAL ROADWAY SECTIONS & DETAILS
REFER TO 300 SERIES DWG'S (TYP.)
- FOR GEOMETRICS AND LANING
REFER TO 400 SERIES DWG'S (TYP.)
- FOR SPOT ELEVATIONS
REFER TO 500 SERIES DWG'S (TYP.)
- FOR PAVEMENT MARKINGS AND SIGNING
REFER TO 600 SERIES DWG'S (TYP.)
- FOR DRAINAGE, CULVERTS, AND STORM SEWER
REFER TO 700 SERIES DWG'S (TYP.)
- FOR PROPOSED UNDERGROUND UTILITY RELOCATIONS
REFER TO 800 SERIES DWG'S (TYP.)

- REMOVE AND DISPOSE OF EXISTING DRAINAGE CULVERT
REFER TO 700 DRAWING SERIES (TYP.)
- PROPOSED UNDERGROUND ELECTRICAL STREET LIGHTING, AND I.T.S. EQUIPMENT.
REFER TO 1500 DRAWINGS SERIES (TYP.)

POTENTIAL RELOCATION:
EXISTING UNDERGROUND
TELUS FIBER OPTIC UTILITY.
REFER TO R1-1105-1130EXTEL
TO -1153EXTEL, AND REFER TO
TELUS DESIGN (T.B.D.), TYP.

ADJUST AND/OR RELOCATE EXISTING TELUS UTILITY
MANHOLE TO SUIT DESIGN SURFACE, BY TELUS (TYP.)

PROPOSED GAS MAIN RELOCATION
CONCEPT (BY FORTISBC), REFER
TO FORTISBC DESIGN (T.B.D.), TYP.

RELOCATE EXISTING BC HYDRO UTILITY POLE
INCL. DAVIT ARM LUMINAIRE (BY BC HYDRO).
REFER TO BC HYDRO DESIGN (T.B.D.)

TEMPORARY O/H BC HYDRO POLE,
ANCHORS, AND CONDUCTORS, TYP.
REFER TO BC HYDRO DESIGN (T.B.D.)

REPLACE EXISTING TELUS UTILITY
POLE (BY TELUS), REFER TO TELUS
DESIGN DWG. NO. 2923245_P

INTERCEPT AND EXTEND
EXISTING UNDERGROUND MoTI
ELECTRICAL POWER UTILITY

RELOCATE EXISTING
DELINEATOR POST (TYP.)

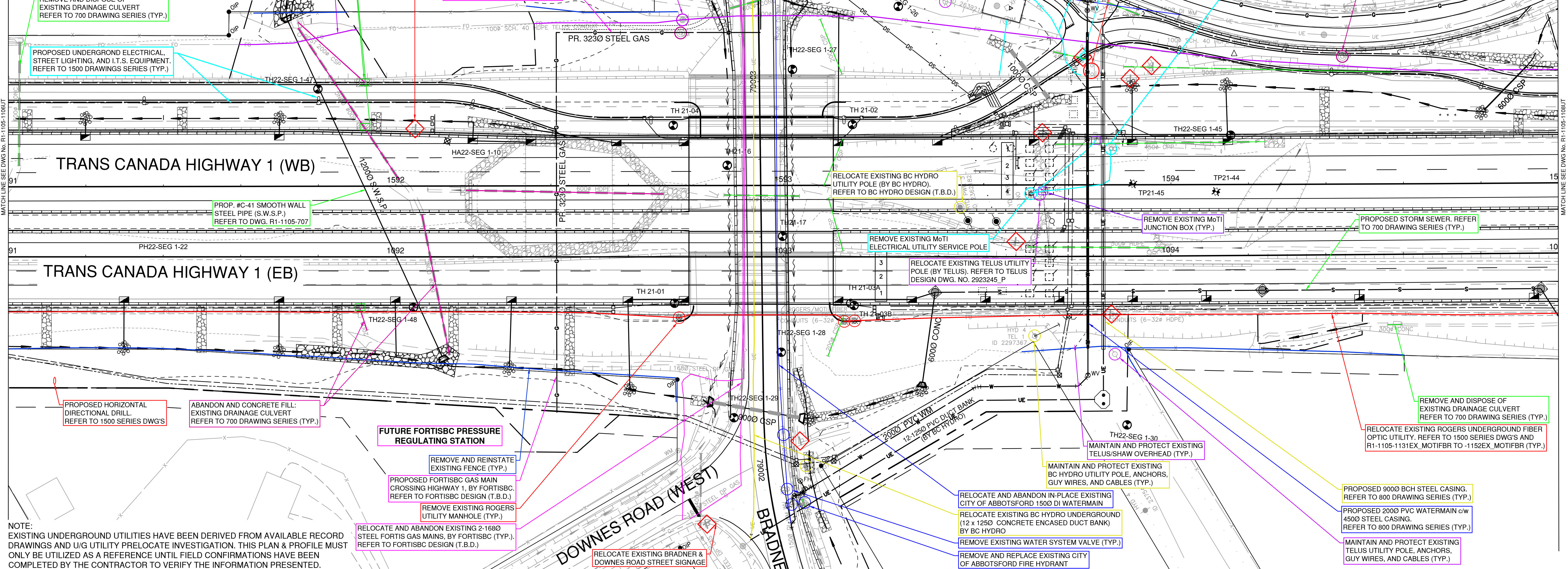
REMOVE EXISTING 2-POST
TRAFFIC SIGNAGE (TYP.)

PROPOSED GAS MAIN RELOCATION
CONCEPT (BY FORTISBC), REFER
TO FORTISBC DESIGN (T.B.D.), TYP.

PROPOSED 12 x 1250 CONCRETE
ENCASED DUCT BANK RELOCATION,
BY BC HYDRO. REFER TO BC HYDRO
DESIGN (T.B.D.), TYP.

REMOVE AND RELOCATE EXISTING
MoTI UTILITY POLE INCLUDING
CAMERA AND APPURTENANCES

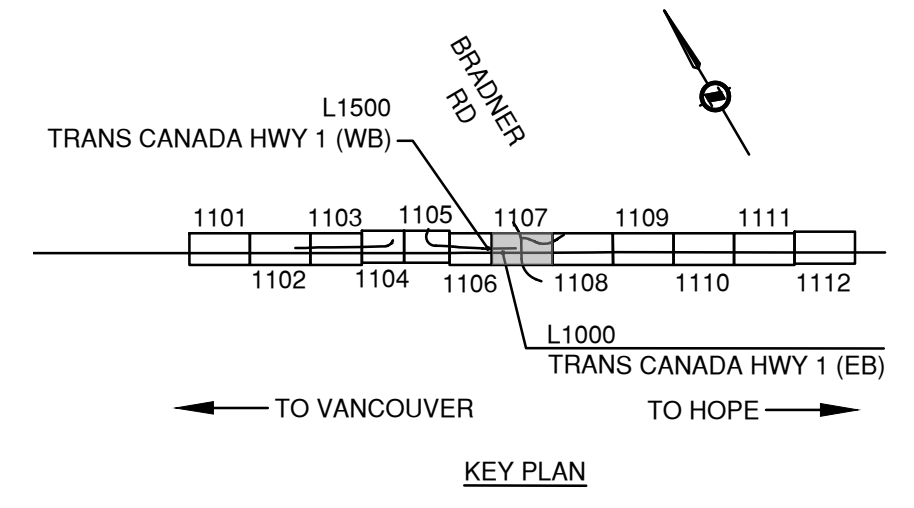
RELOCATE OR REPLACE EXISTING
UTILITY MARKER POST (TYP.)



NOTE:
EXISTING UNDERGROUND UTILITIES HAVE BEEN DERIVED FROM AVAILABLE RECORD
DRAWINGS AND U/G UTILITY PRELOCATE INVESTIGATION. THIS PLAN & PROFILE MUST
ONLY BE UTILIZED AS A REFERENCE UNTIL FIELD CONFIRMATIONS HAVE BEEN
COMPLETED BY THE CONTRACTOR TO VERIFY THE INFORMATION PRESENTED.

LEGEND

— ABANDON AND FILL CULVERT	○ WATERMAIN UTILITIES	— REMOVE AND DISPOSE CULVERT
— WATERMAIN	○ SANITARY MAIN UTILITIES	○ OVERHEAD/CUSTOM SIGNAGE
— SANITARY MAIN	○ STORM MAIN / DRAINAGE UTILITIES	○ 2-POST SIGNAGE
— STORM MAIN / DRAINAGE	○ TELUS UTILITIES	○ LAMP STANDARD
— UNDERGROUND TELUS FIBRE	○ ROGERS UTILITIES	○ UTILITY MARKER POLE
— UNDERGROUND ROGERS FIBRE	○ BC HYDRO UTILITIES	○ MAILBOX
— UNDERGROUND BC HYDRO ELECTRICAL	○ FORTIS BC UTILITIES	○ DELINEATOR POSTS
— FORTIS BC	○ MoTI UTILITIES	○ JUNCTION BOX
— EXISTING FENCE	○ TRAFFIC SIGNAGE	
— UNDERGROUND MoTI ELECTRICAL		



ISL SUITE 201, 8506 - 200 STREET
LANGLEY, BRITISH COLUMBIA, V2Y 0M1
PH : 604.371.0091 FAX : 604.371.0098

SCALE 0 5 1:500 25m CAD FILENAME R1-1105-1107-112UTC.DWG
FILE NUMBER 33038 PLOT DATE 2024-02-23

REV	DATE	REVISIONS	NAME
PA	2022-04-25	ISSUED FOR 50% FUNCTIONAL DESIGN	B. BARKER
PB	2022-09-26	ISSUED FOR 100% FUNCTIONAL DESIGN	B. BARKER
PC	2023-06-23	ISSUED FOR 50% DETAIL DESIGN	B. BARKER
PD	2023-12-01	ISSUED FOR 100% DETAILED DESIGN	B. BARKER
PE	2024-01-26	DRAFT ISSUED FOR TENDER	B. BARKER
PF	2024-02-29	ISSUED FOR TENDER	B. BARKER

BRITISH COLUMBIA MINISTRY OF TRANSPORTATION AND INFRASTRUCTURE
SOUTH COAST REGION
HIGHWAY DESIGN AND GEOMATICS ENGINEERING

UTILITY COORDINATION PLAN
HIGHWAY 1 - MAINLINE WEST
HIGHWAY 1 SIX LANING - LEFUEVRE ROAD TO ROSS ROAD

DESIGNED	B. BARKER	DATE	2024-02-29
QUALITY CONTROL	K. TERNESS	DATE	2024-02-29
QUALITY ASSURANCE	G. NGENG	DATE	2024-02-29
DRAWN	S. DEDDENS	DATE	2024-02-29

PROJECT NUMBER	REG	DRAWING NUMBER	REV
13253-1001	1	R1-1105-1107UT	PF

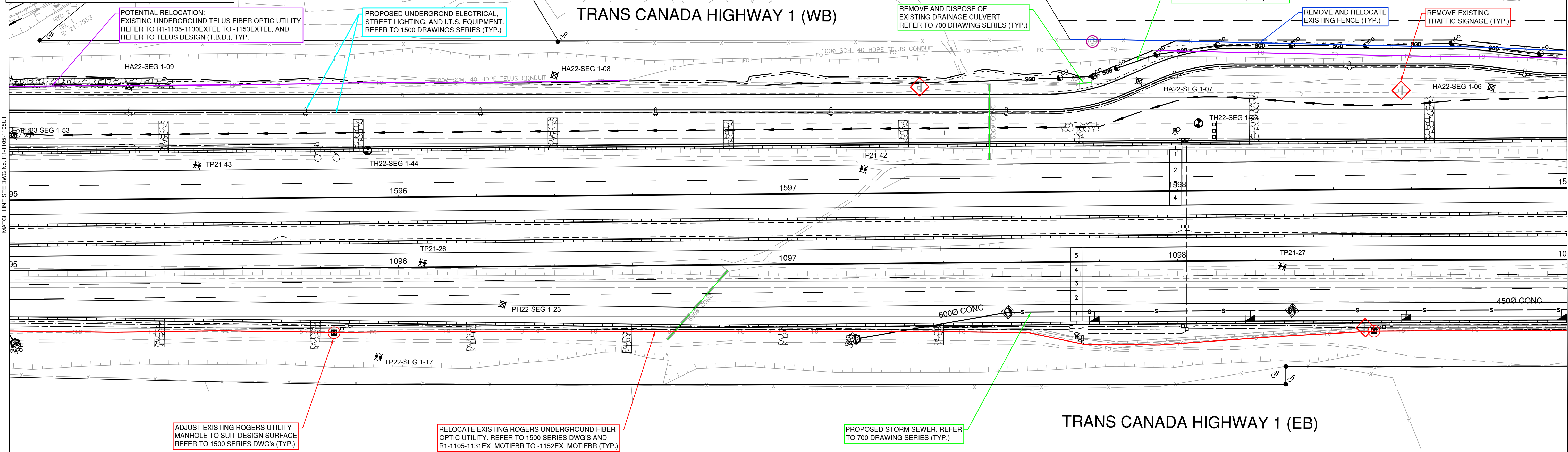
PLOT DATE: 2024/02/23 G:\Projects\33000\33000\33036_AE_Hwy1_264\Whatcom02_CADD\WA07_Hwy1_ML\W\DrawingProduction\1100_SubDisciplines\Utilities-Reference\1100-UTC_Utility_Coordination\1105-1107-112UTC.dwg

- FOR CLEARING AND GRUBBING
REFER TO R1-1105-131 TO -144 (TYP.)
- FOR MULTI-USE PATHWAY PROFILES
REFER TO R1-1105-231 TO -239 (TYP.)
- FOR TYPICAL ROADWAY SECTIONS & DETAILS
REFER TO 300 SERIES DWG's (TYP.)
- FOR GEOMETRICS AND LANING
REFER TO 400 SERIES DWG's (TYP.)
- FOR SPOT ELEVATIONS
REFER TO 500 SERIES DWG's (TYP.)
- FOR PAVEMENT MARKINGS AND SIGNING
REFER TO 600 SERIES DWG's (TYP.)
- FOR DRAINAGE, CULVERTS, AND STORM SEWER
REFER TO 700 SERIES DWG's (TYP.)
- FOR PROPOSED UNDERGROUND UTILITY RELOCATIONS
REFER TO 800 SERIES DWG's (TYP.)

DOWNES ROAD (EAST)

TRANS CANADA HIGHWAY 1 (WB)

TRANS CANADA HIGHWAY 1 (EB)



POTENTIAL RELOCATION:
EXISTING UNDERGROUND TELUS FIBER OPTIC UTILITY
REFER TO R1-1105-1130EXTEL TO -1153EXTEL, AND
REFER TO TELUS DESIGN (T.B.D.), TYP.

PROPOSED UNDERGROUND ELECTRICAL,
STREET LIGHTING, AND I.T.S. EQUIPMENT.
REFER TO 1500 DRAWINGS SERIES (TYP.)

REMOVE AND DISPOSE OF
EXISTING DRAINAGE CULVERT
REFER TO 700 DRAWING SERIES (TYP.)

REFER TO 700 DRAWING SERIES
FOR PROPOSED SUBGRADE DRAIN
DESIGN AND DETAILS (TYP.)

REMOVE AND RELOCATE
EXISTING FENCE (TYP.)

REMOVE EXISTING
TRAFFIC SIGNAGE (TYP.)

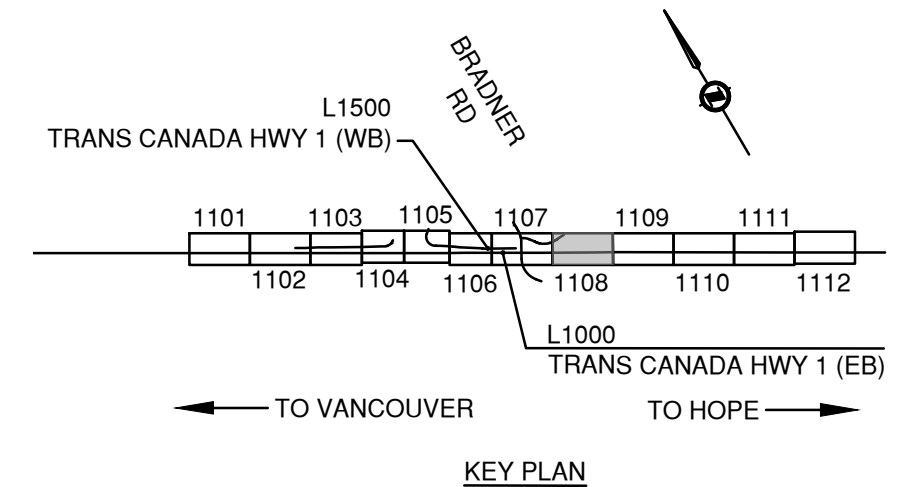
ADJUST EXISTING ROGERS UTILITY
MANHOLE TO SUIT DESIGN SURFACE
REFER TO 1500 SERIES DWG's (TYP.)

RELOCATE EXISTING ROGERS UNDERGROUND FIBER
OPTIC UTILITY. REFER TO 1500 SERIES DWG'S AND
R1-1105-1131EX_MOTIFBR TO -1152EX_MOTIFBR (TYP.)

PROPOSED STORM SEWER. REFER
TO 700 DRAWING SERIES (TYP.)

NOTE:
EXISTING UNDERGROUND UTILITIES HAVE BEEN DERIVED FROM AVAILABLE RECORD
DRAWINGS AND U/G UTILITY PRELOCATE INVESTIGATION. THIS PLAN & PROFILE MUST
ONLY BE UTILIZED AS A REFERENCE UNTIL FIELD CONFIRMATIONS HAVE BEEN
COMPLETED BY THE CONTRACTOR TO VERIFY THE INFORMATION PRESENTED.

LEGEND	
— ABANDON AND FILL CULVERT	— REMOVE AND DISPOSE CULVERT
— WATERMAIN	— OVERHEAD/CUSTOM SIGNAGE
— SANITARY MAIN	— 2-POST SIGNAGE
— STORM MAIN / DRAINAGE	— LAMP STANDARD
— UNDERGROUND TELUS FIBRE	— UTILITY MARKER POLE
— UNDERGROUND ROGERS FIBRE	— MAILBOX
— UNDERGROUND BC HYDRO ELECTRICAL	— DELINEATOR POSTS
— FORTIS BC	— JUNCTION BOX
— EXISTING FENCE	— TRAFFIC SIGNAGE
— UNDERGROUND MoTi ELECTRICAL	
○ WATERMAIN UTILITIES	
○ SANITARY MAIN UTILITIES	
○ STORM MAIN / DRAINAGE UTILITIES	
○ TELUS UTILITIES	
○ ROGERS UTILITIES	
○ BC HYDRO UTILITIES	
○ FORTIS BC UTILITIES	
○ MoTi UTILITIES	

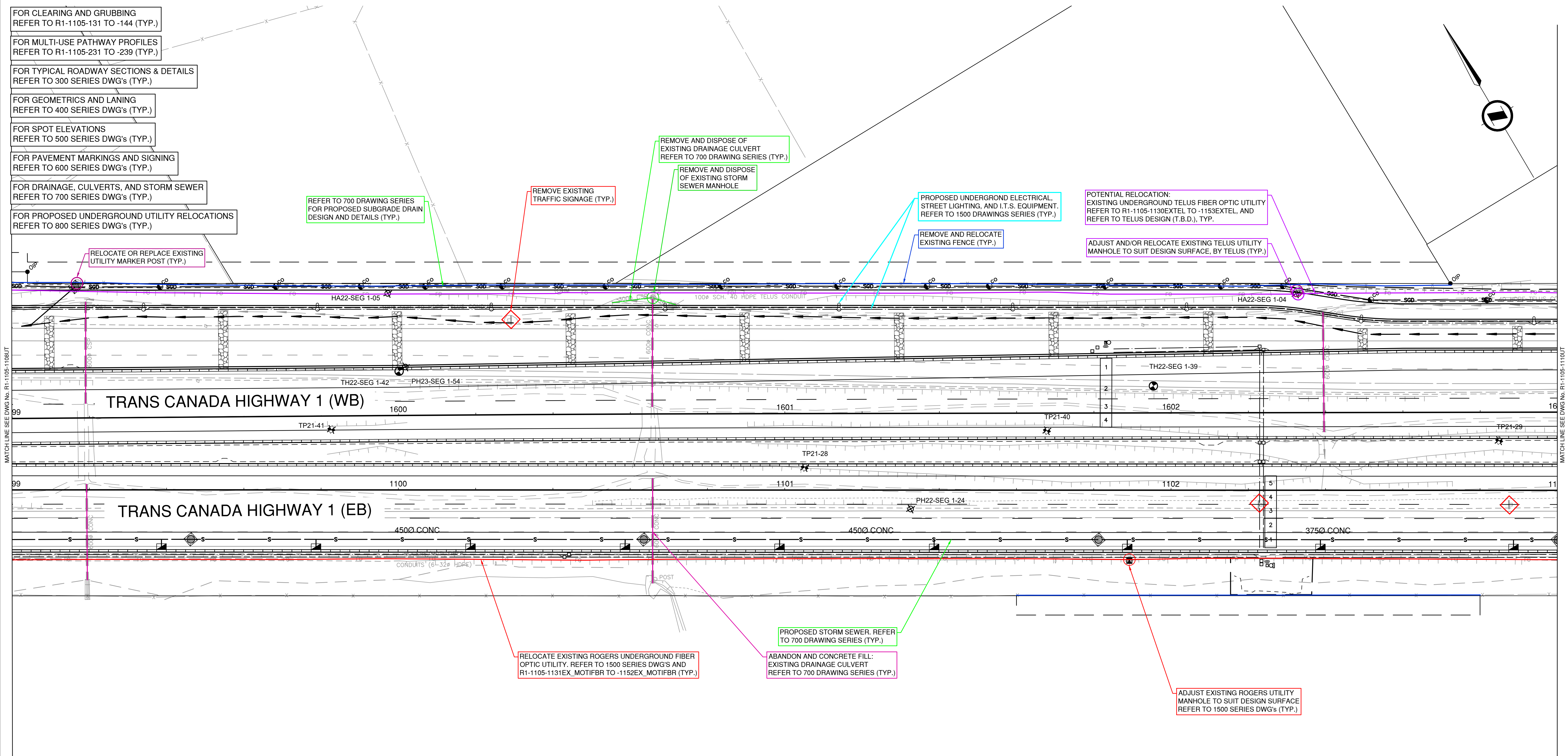


ISL		SUITE 201, 8506 - 200 STREET LANGLEY, BRITISH COLUMBIA, V2Y 0M1 PH : 604.371.0091 FAX : 604.371.0098	
SCALE 0 5 1:500 25m		CAD FILENAME R1-1105-1107-1112UTC.DWG	
		FILE NUMBER 33038	
		PLOT DATE 2024-02-23	
REV	DATE	REVISIONS	NAME
PA	2022-04-25	ISSUED FOR 50% FUNCTIONAL DESIGN	B. BARKER
PB	2022-09-26	ISSUED FOR 100% FUNCTIONAL DESIGN	B. BARKER
PC	2023-06-23	ISSUED FOR 50% DETAIL DESIGN	B. BARKER
PD	2023-12-01	ISSUED FOR 100% DETAILED DESIGN	B. BARKER
PE	2024-01-26	DRAFT ISSUED FOR TENDER	B. BARKER
PF	2024-02-29	ISSUED FOR TENDER	B. BARKER

BRITISH COLUMBIA		MINISTRY OF TRANSPORTATION AND INFRASTRUCTURE	
		SOUTH COAST REGION HIGHWAY DESIGN AND GEOMATICS ENGINEERING	
UTILITY COORDINATION PLAN			
HIGHWAY 1 - MAINLINE WEST HIGHWAY 1 SIX LANING - LEFEUVRE ROAD TO ROSS ROAD			
DESIGNED	B. BARKER	DATE	2024-02-29
QUALITY CONTROL	K. TERNESS	DATE	2024-02-29
QUALITY ASSURANCE	G. NGIENG	DATE	2024-02-29
DRAWN	S. DEDDENS	DATE	2024-02-29
PROJECT NUMBER	REG	DRAWING NUMBER	REV
13253-1001	1	R1-1105-1108UT	PF

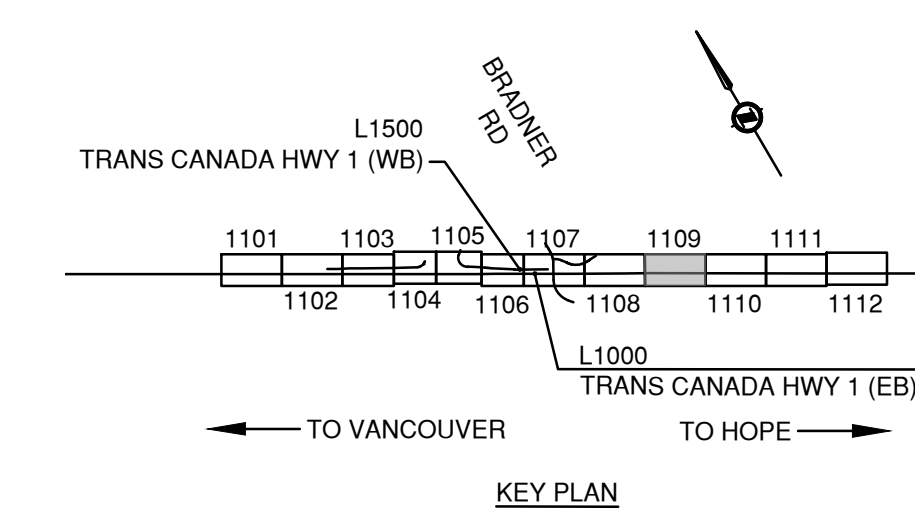
PLOT DATE: 2024/02/23 G:\Projects\33000\33000\33038_AE_Hwy1_264-Whatcom02_CADD\WA07_Hwy1_MLW\DrawingProduction\1100_Subs\Disciplines\Utilities\Reference\1100-UTC_Utility_Coordination\1105-1107-1112UTC.dwg

PLOT DATE: 2024/02/23 G:\Projects\33000\33000\33000\33036_AE_Hwy1_264-Whatcom02_CADD\WA07_Hwy1_MLWDrawingProduction\1100_SubDisciplines\Utilities-Reference\1100-UTC_Utility_Coordination\R1-1105-1107-1112UTC.dwg



NOTE:
EXISTING UNDERGROUND UTILITIES HAVE BEEN DERIVED FROM AVAILABLE RECORD DRAWINGS AND U/G UTILITY PRELOCATE INVESTIGATION. THIS PLAN & PROFILE MUST ONLY BE UTILIZED AS A REFERENCE UNTIL FIELD CONFIRMATIONS HAVE BEEN COMPLETED BY THE CONTRACTOR TO VERIFY THE INFORMATION PRESENTED.

LEGEND		
— ABANDON AND FILL CULVERT	○ WATERMAIN UTILITIES	— REMOVE AND DISPOSE CULVERT
— WATERMAIN	○ SANITARY MAIN UTILITIES	— OVERHEAD/CUSTOM SIGNAGE
— SANITARY MAIN	○ STORM MAIN / DRAINAGE UTILITIES	○ 2-POST SIGNAGE
— STORM MAIN / DRAINAGE	○ TELUS UTILITIES	○ LAMP STANDARD
— UNDERGROUND TELUS FIBRE	○ ROGERS UTILITIES	○ UTILITY MARKER POLE
— UNDERGROUND ROGERS FIBRE	○ BC HYDRO UTILITIES	○ MAILBOX
— UNDERGROUND BC HYDRO ELECTRICAL	○ FORTIS BC UTILITIES	○ DELINEATOR POSTS
— FORTIS BC	○ MoTI UTILITIES	○ JUNCTION BOX
— EXISTING FENCE		◇ TRAFFIC SIGNAGE
— UNDERGROUND MoTi ELECTRICAL		



ISL		SUITE 201, 8506 - 200 STREET LANGLEY, BRITISH COLUMBIA, V2Y 0M1 PH : 604.371.0091 FAX : 604.371.0098	
SCALE 0 5 1:500 25m		CAD FILENAME	R1-1105-1107-1112UTC.DWG
		FILE NUMBER	33036
		PLOT DATE	2024-02-23
REV	DATE	REVISIONS	NAME
PA	2022-04-25	ISSUED FOR 50% FUNCTIONAL DESIGN	B. BARKER
PB	2022-09-26	ISSUED FOR 100% FUNCTIONAL DESIGN	B. BARKER
PC	2023-06-23	ISSUED FOR 50% DETAIL DESIGN	B. BARKER
PD	2023-12-01	ISSUED FOR 100% DETAILED DESIGN	B. BARKER
PE	2024-01-26	DRAFT ISSUED FOR TENDER	B. BARKER
PF	2024-02-29	ISSUED FOR TENDER	B. BARKER

BRITISH COLUMBIA

MINISTRY OF TRANSPORTATION AND INFRASTRUCTURE

SOUTH COAST REGION
HIGHWAY DESIGN AND GEOMATICS ENGINEERING

UTILITY COORDINATION PLAN

HIGHWAY 1 - MAINLINE WEST
HIGHWAY 1 SIX LANING - LEFEUVRE ROAD TO ROSS ROAD

DESIGNED	B. BARKER	DATE	2024-02-29
QUALITY CONTROL	K. TERNESS	DATE	2024-02-29
QUALITY ASSURANCE	G. NGENG	DATE	2024-02-29
DRAWN	S. DEDDENS	DATE	2024-02-29

PROJECT NUMBER	REG	DRAWING NUMBER	REV
13253-1001	1	R1-1105-1109UT	PF

FOR CLEARING AND GRUBBING
REFER TO R1-1105-131 TO -144 (TYP.)

FOR MULTI-USE PATHWAY PROFILES
REFER TO R1-1105-231 TO -239 (TYP.)

FOR TYPICAL ROADWAY SECTIONS & DETAILS
REFER TO 300 SERIES DWG's (TYP.)

FOR GEOMETRICS AND LANING
REFER TO 400 SERIES DWG's (TYP.)

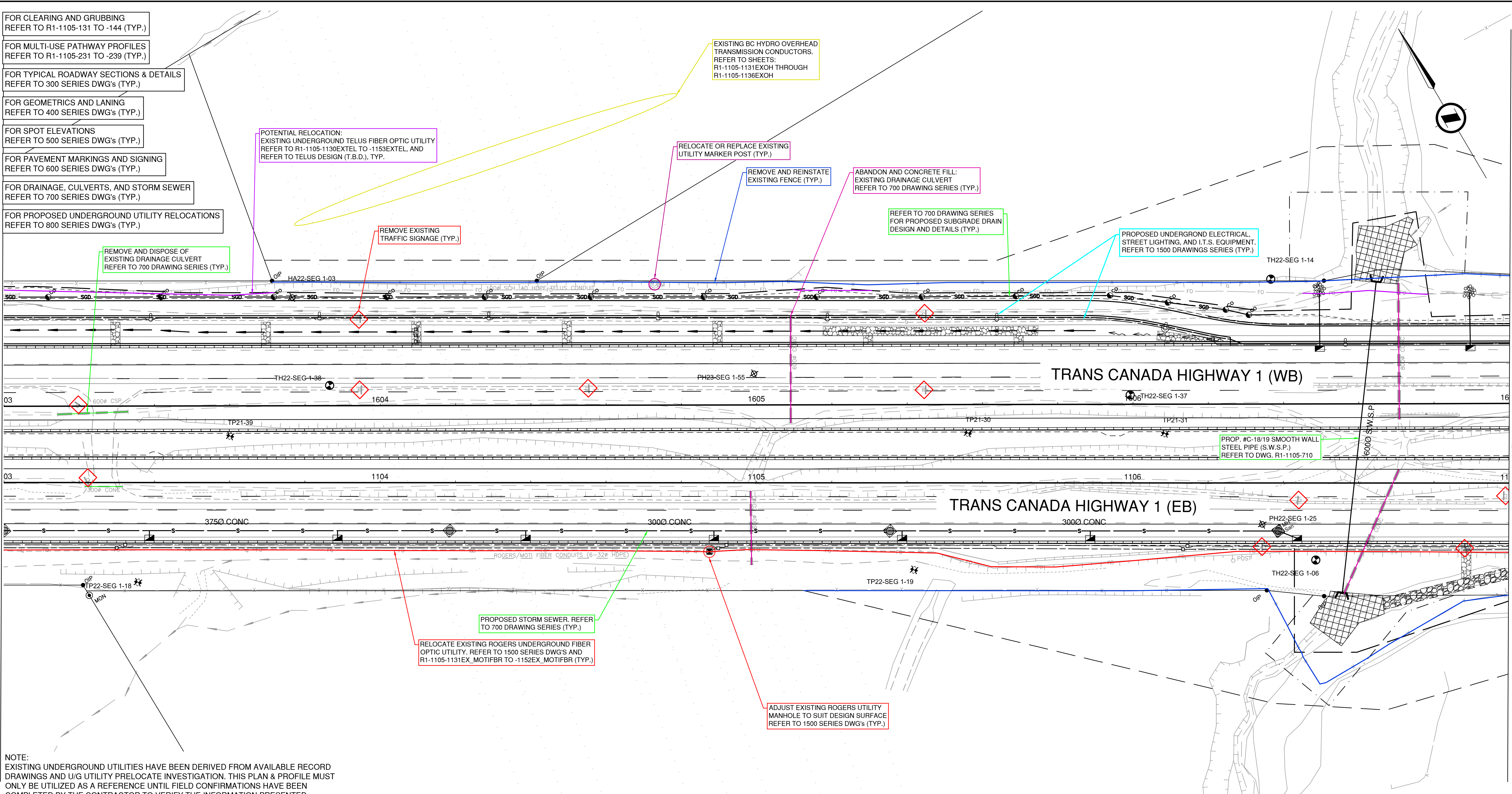
FOR SPOT ELEVATIONS
REFER TO 500 SERIES DWG's (TYP.)

FOR PAVEMENT MARKINGS AND SIGNING
REFER TO 600 SERIES DWG's (TYP.)

FOR DRAINAGE, CULVERTS, AND STORM SEWER
REFER TO 700 SERIES DWG's (TYP.)

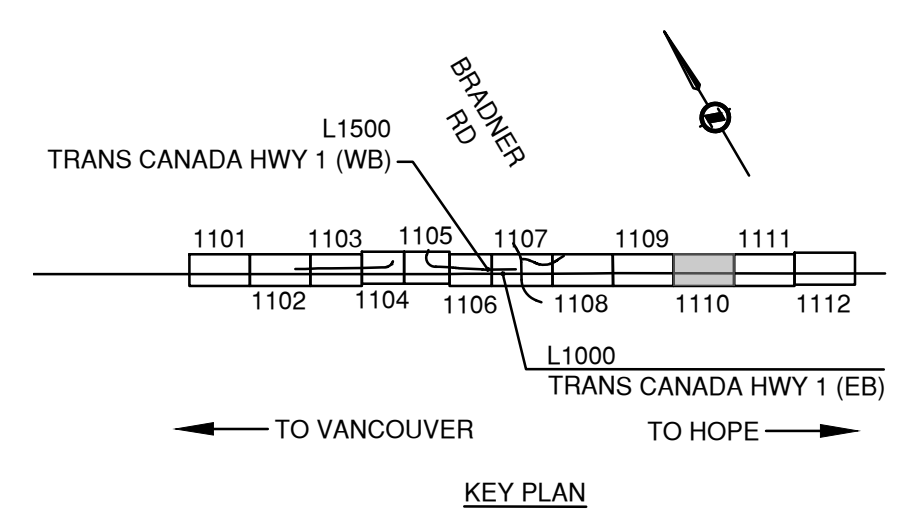
FOR PROPOSED UNDERGROUND UTILITY RELOCATIONS
REFER TO 800 SERIES DWG's (TYP.)

PLOT DATE: 2024/02/23 G:\Projects\33000\33000\33000\33000\CADD\WA07_Hwy1_ML\DrawingProduction\1100_SubDisciplines\Utilities-Reference\1100-UTC_Utility_Coordination\R1-1105-1107-1112UTC.dwg



NOTE:
EXISTING UNDERGROUND UTILITIES HAVE BEEN DERIVED FROM AVAILABLE RECORD DRAWINGS AND U/G UTILITY PRELOCATE INVESTIGATION. THIS PLAN & PROFILE MUST ONLY BE UTILIZED AS A REFERENCE UNTIL FIELD CONFIRMATIONS HAVE BEEN COMPLETED BY THE CONTRACTOR TO VERIFY THE INFORMATION PRESENTED.

LEGEND		
— ABANDON AND FILL CULVERT	○ WATERMAIN UTILITIES	— REMOVE AND DISPOSE CULVERT
— WATERMAIN	○ SANITARY MAIN UTILITIES	○ OVERHEAD/CUSTOM SIGNAGE
— SANITARY MAIN	○ STORM MAIN / DRAINAGE UTILITIES	○ 2-POST SIGNAGE
— STORM MAIN / DRAINAGE	○ TELUS UTILITIES	○ LAMP STANDARD
— UNDERGROUND TELUS FIBRE	○ ROGERS UTILITIES	○ UTILITY MARKER POLE
— UNDERGROUND ROGERS FIBRE	○ BC HYDRO UTILITIES	○ MAILBOX
— UNDERGROUND BC HYDRO ELECTRICAL	○ FORTIS BC UTILITIES	○ DELINEATOR POSTS
— FORTIS BC	○ MoTi UTILITIES	○ JUNCTION BOX
— EXISTING FENCE		○ TRAFFIC SIGNAGE
— UNDERGROUND MoTi ELECTRICAL		



SUITE 201, 8506 - 200 STREET
LANGLEY, BRITISH COLUMBIA, V2Y 0M1
PH : 604.371.0091 FAX : 604.371.0098

CAD FILENAME: R1-1105-1107-1112UTC.DWG

FILE NUMBER: 33036

PLOT DATE: 2024-02-23

REV	DATE	REVISIONS	NAME
PA	2022-04-25	ISSUED FOR 50% FUNCTIONAL DESIGN	B. BARKER
PB	2022-09-26	ISSUED FOR 100% FUNCTIONAL DESIGN	B. BARKER
PC	2023-06-23	ISSUED FOR 50% DETAIL DESIGN	B. BARKER
PD	2023-12-01	ISSUED FOR 100% DETAILED DESIGN	B. BARKER
PE	2024-01-26	DRAFT ISSUED FOR TENDER	B. BARKER
PF	2024-02-29	ISSUED FOR TENDER	B. BARKER

BRITISH COLUMBIA

MINISTRY OF TRANSPORTATION AND INFRASTRUCTURE

SOUTH COAST REGION

HIGHWAY DESIGN AND GEOMETRICS ENGINEERING

UTILITY COORDINATION PLAN

HIGHWAY 1 - MAINLINE WEST HIGHWAY 1 SIX LANING - LEFUEVRE ROAD TO ROSS ROAD

DESIGNED: B. BARKER	DATE: 2024-02-29
QUALITY CONTROL: K. TERNESS	DATE: 2024-02-29
QUALITY ASSURANCE: G. NGHIENG	DATE: 2024-02-29
DRAWN: S. DEDDENS	DATE: 2024-02-29

PROJECT NUMBER	REG	DRAWING NUMBER	REV
13253-1001	1	R1-1105-1110UT	PF

FOR CLEARING AND GRUBBING
REFER TO R1-1105-131 TO -144 (TYP.)

FOR MULTI-USE PATHWAY PROFILES
REFER TO R1-1105-231 TO -239 (TYP.)

FOR TYPICAL ROADWAY SECTIONS & DETAILS
REFER TO 300 SERIES DWG's (TYP.)

FOR GEOMETRICS AND LANING
REFER TO 400 SERIES DWG's (TYP.)

FOR SPOT ELEVATIONS
REFER TO 500 SERIES DWG's (TYP.)

FOR PAVEMENT MARKINGS AND SIGNING
REFER TO 600 SERIES DWG's (TYP.)

FOR DRAINAGE, CULVERTS, AND STORM SEWER
REFER TO 700 SERIES DWG's (TYP.)

FOR PROPOSED UNDERGROUND UTILITY RELOCATIONS
REFER TO 800 SERIES DWG's (TYP.)

REMOVE EXISTING
TRAFFIC SIGNAGE (TYP.)

RELOCATE OR REPLACE EXISTING
UTILITY MARKER POST (TYP.)

REMOVE EXISTING 2-POST
TRAFFIC SIGNAGE (TYP.)

ABANDON AND CONCRETE FILL:
EXISTING DRAINAGE CULVERT
REFER TO 700 DRAWING SERIES (TYP.)

PROPOSED UNDERGROUND ELECTRICAL,
STREET LIGHTING, AND I.T.S. EQUIPMENT.
REFER TO 1500 DRAWING SERIES (TYP.)

REMOVE AND RELOCATE
EXISTING FENCE (TYP.)

POTENTIAL RELOCATION:
EXISTING UNDERGROUND TELUS FIBER OPTIC UTILITY
REFER TO R1-1105-1130EXTEL TO -1153EXTEL, AND
REFER TO TELUS DESIGN (T.B.D.), TYP.

ADJUST EXISTING ROGERS UTILITY
MANHOLE TO SUIT DESIGN SURFACE
REFER TO 1500 SERIES DWG's (TYP.)

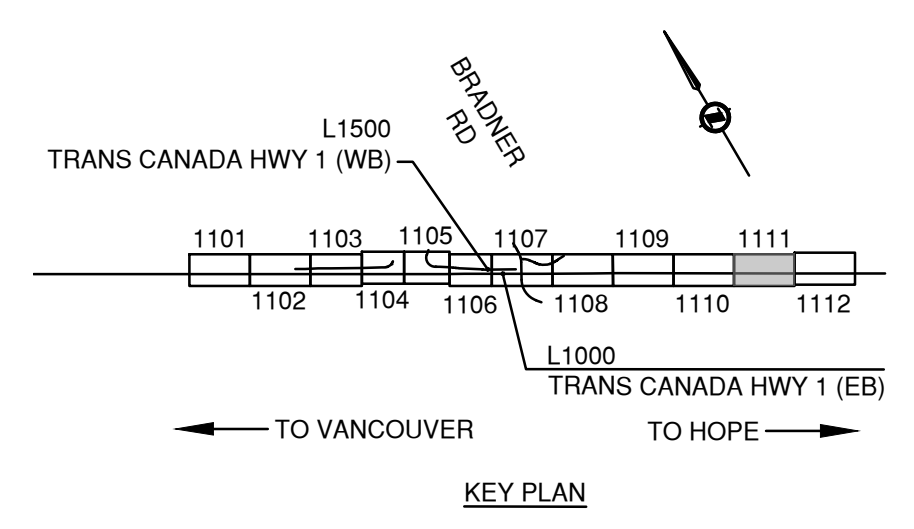
RELOCATE EXISTING ROGERS UNDERGROUND FIBER
OPTIC UTILITY. REFER TO 1500 SERIES DWG'S AND
R1-1105-1131EX_MOTIFBR TO -1152EX_MOTIFBR (TYP.)

REMOVE AND DISPOSE OF
EXISTING DRAINAGE CULVERT
REFER TO 700 DRAWING SERIES (TYP.)

PROPOSED STORM SEWER. REFER
TO 700 DRAWING SERIES (TYP.)

NOTE:
EXISTING UNDERGROUND UTILITIES HAVE BEEN DERIVED FROM AVAILABLE RECORD
DRAWINGS AND U/G UTILITY PRELOCATE INVESTIGATION. THIS PLAN & PROFILE MUST
ONLY BE UTILIZED AS A REFERENCE UNTIL FIELD CONFIRMATIONS HAVE BEEN
COMPLETED BY THE CONTRACTOR TO VERIFY THE INFORMATION PRESENTED.

LEGEND		
— ABANDON AND FILL CULVERT	○ WATERMAIN UTILITIES	— REMOVE AND DISPOSE CULVERT
— WATERMAIN	○ SANITARY MAIN UTILITIES	○ OVERHEAD/CUSTOM SIGNAGE
— SANITARY MAIN	○ STORM MAIN / DRAINAGE UTILITIES	○ 2-POST SIGNAGE
— STORM MAIN / DRAINAGE	○ TELUS UTILITIES	○ LAMP STANDARD
— UNDERGROUND TELUS FIBRE	○ ROGERS UTILITIES	○ UTILITY MARKER POLE
— UNDERGROUND ROGERS FIBRE	○ BC HYDRO UTILITIES	○ MAILBOX
— UNDERGROUND BC HYDRO ELECTRICAL	○ FORTIS BC UTILITIES	○ DELINEATOR POSTS
— FORTIS BC	○ MoTi UTILITIES	□ JUNCTION BOX
— EXISTING FENCE		◇ TRAFFIC SIGNAGE
— UNDERGROUND MoTi ELECTRICAL		



ISL		SUITE 201, 8506 - 200 STREET LANGLEY, BRITISH COLUMBIA, V2Y 0M1 PH : 604.371.0091 FAX : 604.371.0098	
SCALE 0 5 1:500 25m		CAD FILENAME R1-1105-1107-1112UTC.DWG	
		FILE NUMBER 33038	
		PLOT DATE 2024-02-23	
REV	DATE	REVISIONS	NAME
PA	2022-04-25	ISSUED FOR 50% FUNCTIONAL DESIGN	B. BARKER
PB	2022-09-26	ISSUED FOR 100% FUNCTIONAL DESIGN	B. BARKER
PC	2023-06-23	ISSUED FOR 50% DETAILED DESIGN	B. BARKER
PD	2023-12-01	ISSUED FOR 100% DETAILED DESIGN	B. BARKER
PE	2024-01-26	DRAFT ISSUED FOR TENDER	B. BARKER
PF	2024-02-29	ISSUED FOR TENDER	B. BARKER

BRITISH COLUMBIA MINISTRY OF TRANSPORTATION AND INFRASTRUCTURE
SOUTH COAST REGION
HIGHWAY DESIGN AND GEOMATICS ENGINEERING

UTILITY COORDINATION PLAN
HIGHWAY 1 - MAINLINE WEST
HIGHWAY 1 SIX LANING - LEFUEVRE ROAD TO ROSS ROAD

DESIGNED	B. BARKER	DATE	2024-02-29
QUALITY CONTROL	K. TERNES	DATE	2024-02-29
QUALITY ASSURANCE	G. NGENG	DATE	2024-02-29
DRAWN	S. DEDDENS	DATE	2024-02-29

PROJECT NUMBER	REG	DRAWING NUMBER	REV
13253-1001	1	R1-1105-1111UT	PF

PLOT DATE: 2024/02/23 G:\Projects\33000\33000\33036_AE_Hwy1_264-Whatcom02_CADD\WA07_Hwy1_MLWDrawingProduction\1100_SubDisciplines\Utilities-Reference\1100-UTC_Utility_Coordination\1105-1107-1112UTC.dwg

MATCH LINE SEE DWG NO. R1-1105-1110UT

MATCH LINE SEE DWG NO. R1-1105-1112UT

- FOR CLEARING AND GRUBBING REFER TO R1-1105-131 TO -144 (TYP.)
- FOR MULTI-USE PATHWAY PROFILES REFER TO R1-1105-231 TO -239 (TYP.)
- FOR TYPICAL ROADWAY SECTIONS & DETAILS REFER TO 300 SERIES DWG's (TYP.)
- FOR GEOMETRICS AND LANING REFER TO 400 SERIES DWG's (TYP.)
- FOR SPOT ELEVATIONS REFER TO 500 SERIES DWG's (TYP.)
- FOR PAVEMENT MARKINGS AND SIGNING REFER TO 600 SERIES DWG's (TYP.)
- FOR DRAINAGE, CULVERTS, AND STORM SEWER REFER TO 700 SERIES DWG's (TYP.)
- FOR PROPOSED UNDERGROUND UTILITY RELOCATIONS REFER TO 800 SERIES DWG's (TYP.)

- RELOCATE EXISTING BC HYDRO UTILITY POLE (BY BC HYDRO). REFER TO BC HYDRO DESIGN (T.B.D.)
- PROPOSED 2000 PVC WATERMAIN ON 4500 STEEL CASING. REFER TO 800 DRAWING SERIES (TYP.)

- PROPOSED UNDERGROUND ELECTRICAL STREET LIGHTING, AND I.T.S. EQUIPMENT. REFER TO 1500 DRAWING SERIES (TYP.)

- POTENTIAL RELOCATION: EXISTING UNDERGROUND TELUS FIBER OPTIC UTILITY REFER TO R1-1105-1130EXTEL TO -1153EXTEL, AND REFER TO TELUS DESIGN (T.B.D.), TYP.

- RELOCATE OR REPLACE EXISTING UTILITY MARKER POST (TYP.)

- REMOVE EXISTING TRAFFIC SIGNAGE (TYP.)

- REMOVE AND RELOCATE EXISTING FENCE (TYP.)

- RELOCATE AND ABANDON IN-PLACE EXISTING CITY OF ABBOTSFORD 1500 DI WATERMAIN INCLUDING 6000 CASING

- RELOCATE EXISTING TELUS UTILITY POLE (BY TELUS) REFER TO TELUS DESIGN DWG. NO. 2897429_P1

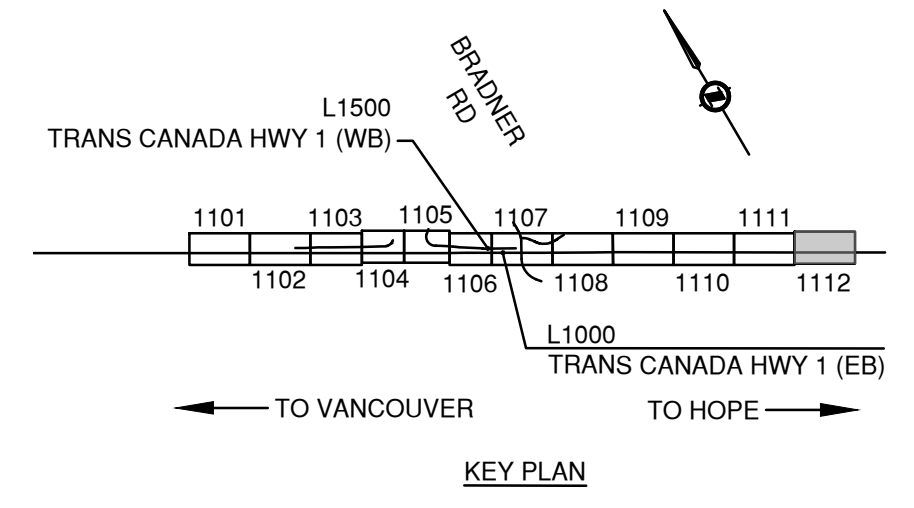
- RELOCATE EXISTING BC HYDRO UTILITY POLE (BY BC HYDRO). REFER TO BC HYDRO DESIGN (T.B.D.)

- RELOCATE EXISTING ROGERS UNDERGROUND FIBER OPTIC UTILITY. REFER TO 1500 SERIES DWG'S AND R1-1105-1131EX_MOTIFBR TO -1152EX_MOTIFBR (TYP.)

- ADJUST EXISTING ROGERS UTILITY MANHOLE TO SUIT DESIGN SURFACE REFER TO 1500 SERIES DWG'S (TYP.)

NOTE:
EXISTING UNDERGROUND UTILITIES HAVE BEEN DERIVED FROM AVAILABLE RECORD DRAWINGS AND U/G UTILITY PRELOCATE INVESTIGATION. THIS PLAN & PROFILE MUST ONLY BE UTILIZED AS A REFERENCE UNTIL FIELD CONFIRMATIONS HAVE BEEN COMPLETED BY THE CONTRACTOR TO VERIFY THE INFORMATION PRESENTED.

LEGEND		
— ABANDON AND FILL CULVERT	○ WATERMAIN UTILITIES	— REMOVE AND DISPOSE CULVERT
— WATERMAIN	○ SANITARY MAIN UTILITIES	— OVERHEAD/CUSTOM SIGNAGE
— SANITARY MAIN	○ STORM MAIN / DRAINAGE UTILITIES	○ 2-POST SIGNAGE
— STORM MAIN / DRAINAGE	○ TELUS UTILITIES	○ LAMP STANDARD
— UNDERGROUND TELUS FIBRE	○ ROGERS UTILITIES	○ UTILITY MARKER POLE
— UNDERGROUND ROGERS FIBRE	○ BC HYDRO UTILITIES	○ MAILBOX
— UNDERGROUND BC HYDRO ELECTRICAL	○ FORTIS BC UTILITIES	○ DELINEATOR POSTS
— FORTIS BC	○ MoTi UTILITIES	○ JUNCTION BOX
— EXISTING FENCE		○ TRAFFIC SIGNAGE
— UNDERGROUND MoTi ELECTRICAL		



SUITE 201, 8506 - 200 STREET
LANGLEY, BRITISH COLUMBIA, V2Y 0M1
PH : 604.371.0091 FAX : 604.371.0098

CAD FILENAME: R1-1105-1107-1112UTC.DWG
FILE NUMBER: 33038
PLOT DATE: 2024-02-23

REV	DATE	REVISIONS	NAME
PA	2022-04-25	ISSUED FOR 50% FUNCTIONAL DESIGN	B. BARKER
PB	2022-09-26	ISSUED FOR 100% FUNCTIONAL DESIGN	B. BARKER
PC	2023-06-23	ISSUED FOR 50% DETAIL DESIGN	B. BARKER
PD	2023-12-01	ISSUED FOR 100% DETAILED DESIGN	B. BARKER
PE	2024-01-26	DRAFT ISSUED FOR TENDER	B. BARKER
PF	2024-02-29	ISSUED FOR TENDER	B. BARKER

BRITISH COLUMBIA

MINISTRY OF TRANSPORTATION AND INFRASTRUCTURE
SOUTH COAST REGION
HIGHWAY DESIGN AND GEOMETRICS ENGINEERING

UTILITY COORDINATION PLAN

HIGHWAY 1 - MAINLINE WEST
HIGHWAY 1 SIX LANING - LEFUEVRE ROAD TO ROSS ROAD

DESIGNED: B. BARKER	DATE: 2024-02-29
QUALITY CONTROL: K. TERNESS	DATE: 2024-02-29
QUALITY ASSURANCE: G. NGENG	DATE: 2024-02-29
DRAWN: S. DEDDENS	DATE: 2024-02-29

PROJECT NUMBER	REG	DRAWING NUMBER	REV
13253-1001	1	R1-1105-1112UT	PF

PLOT DATE: 2024/02/23 G:\Projects\33000\33000\33038_AE_Hwy1_264-Whatcom02_CADD\WA07_Hwy1_MLW\DrawingProduction\1100_SubDisciplines\Utilities\Reference\1100-UTC_Utility_Coordination\1105-1107-1112UTC.dwg