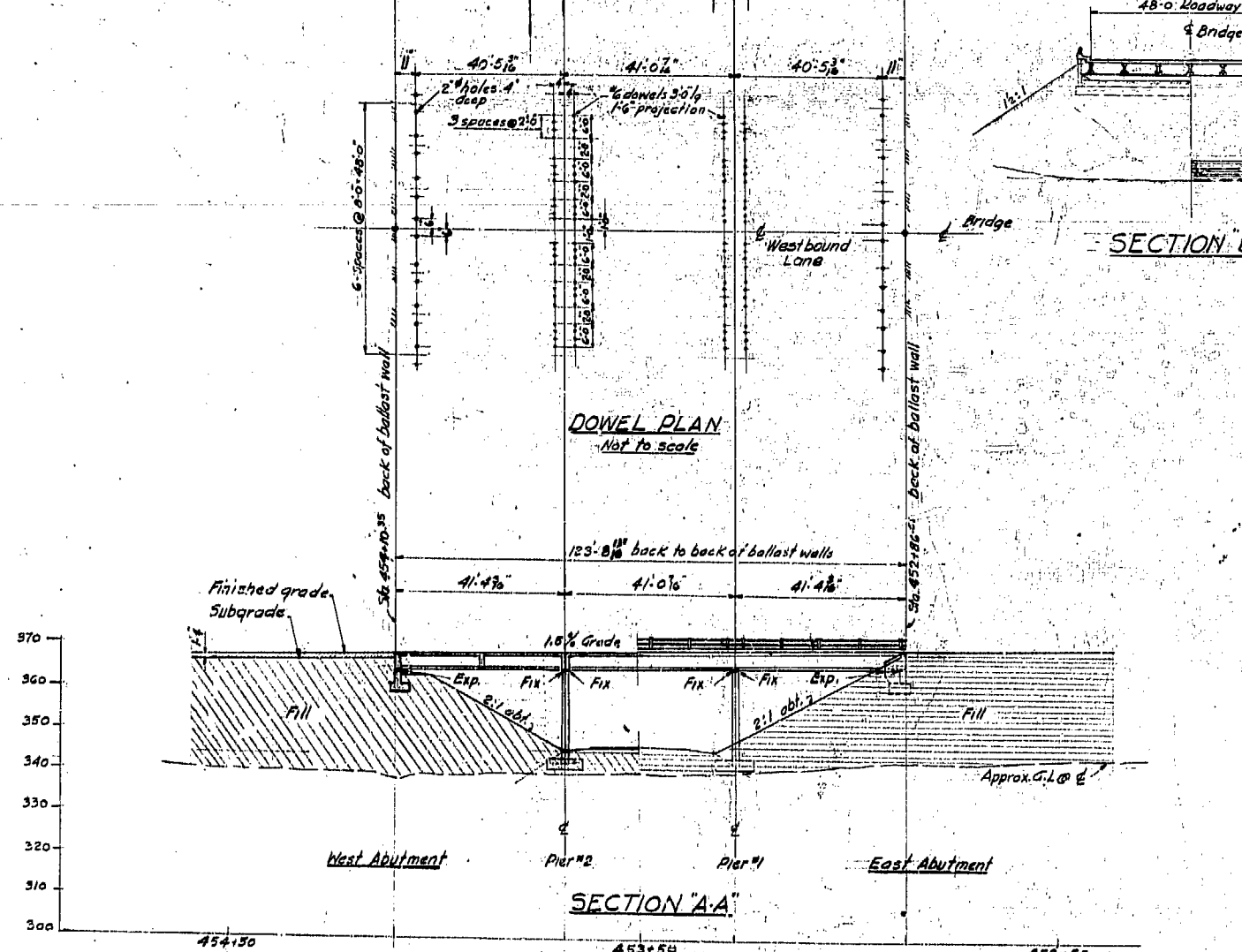
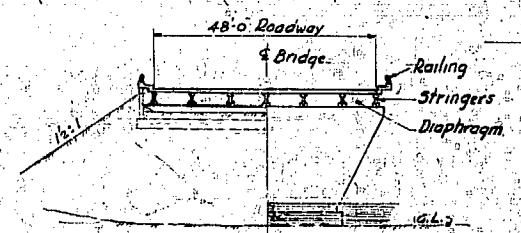


PLAN



SECTION "A-A"

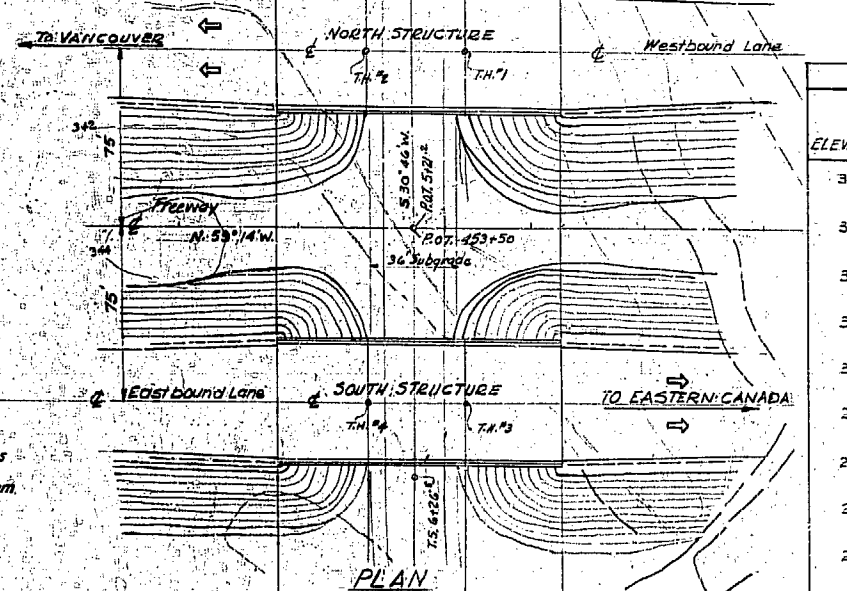
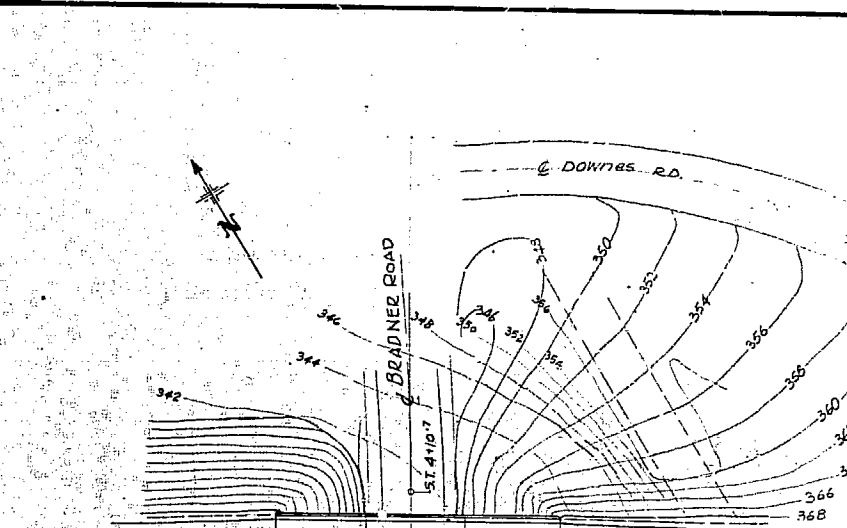
NORTH STRUCTURE SHOWN
(South Structure similar except as noted on General Arrangement)



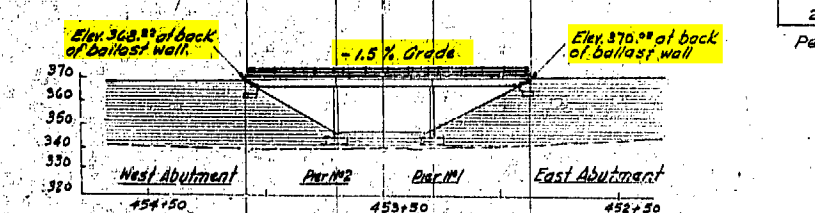
SECTION B-B



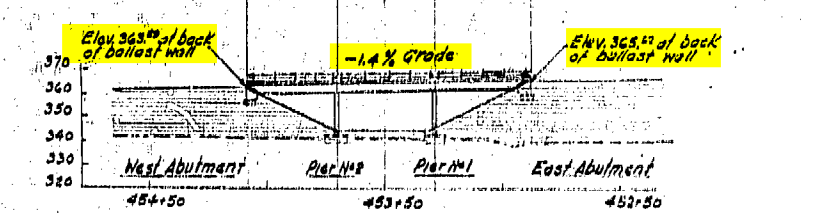
DOWEL PLAN
Not to scale



PLAN



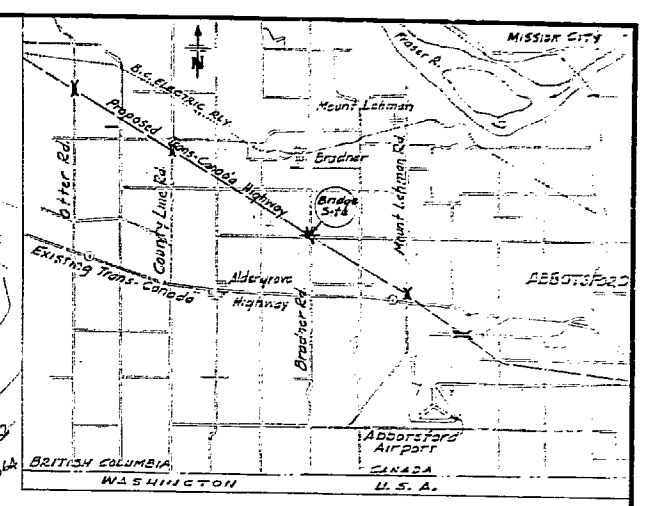
PROFILE (North Structure) WESTBOUND



PROFILE (South Structure) EASTBOUND

GENERAL ARRANGEMENT

Notes
Specifications: Dept. of Highways
Load: H 20-516
Survey by: Location Branch
Datum: Geodetic
Location S.M.



KEY MAP
Scale: 1 inch = 2 miles

TEST HOLE DATA								
TEST HOLE NOS								
ELEVATION	NO.1		NO.2		NO.3		NO.4	
	MATERIAL	PENET.	MATERIAL	PENET.	MATERIAL	PENET.	MATERIAL	PENET.
340	Clayey Sandy Silt	20	Clayey Sandy Silt	28	Sandy Clayey Silt	47	Sandy Clayey Silt	32
330	Sandy Clayey Silt	19	Silty Sand	156	Sandy Clayey Silt	55	Sandy Clayey Silt	103
320	Clayey Sandy Silt	33	Sandy Clayey Silt	117	Sandy Clayey Silt	55	Sandy Clayey Silt	103
310	Sandy Clayey Silt	230	Silty Sand	208	Sandy Gravel	211	Sandy Clayey Silt	103
300			Silty Sand	208	Silty Sands	171	Silty Gravelly Sand	166
290			Sandy Silty Clay	97				
280								
270								
260								
250			Sandy Clay & Silt	197				
245								

Penetration - Average number of blows per 12" penetration (140 lb hammer falling 30")

LIST OF DRAWINGS	
DWG. NR	TITLE
1608-3	Layout, Dowel Plan and Key Map
-4	Piers and Abutments
-5	Prestressed Concrete Stringers
-6	Deck Details

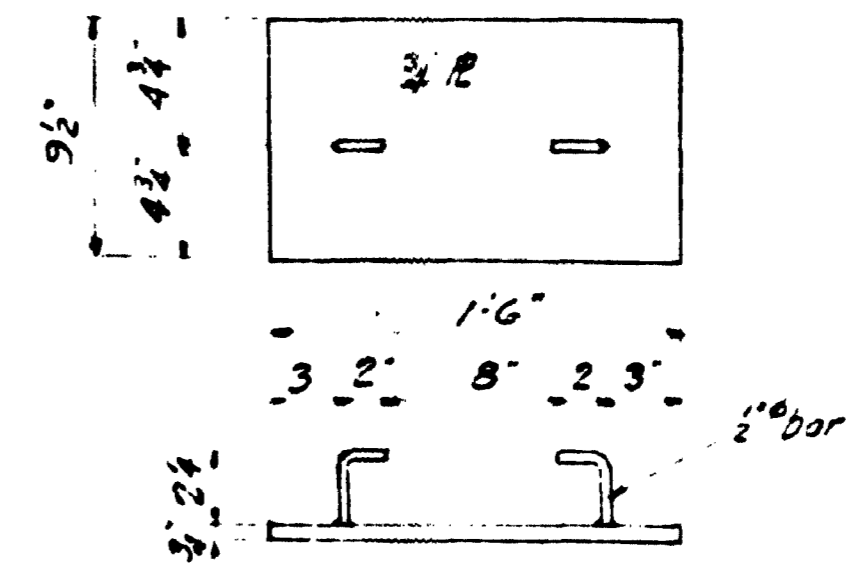
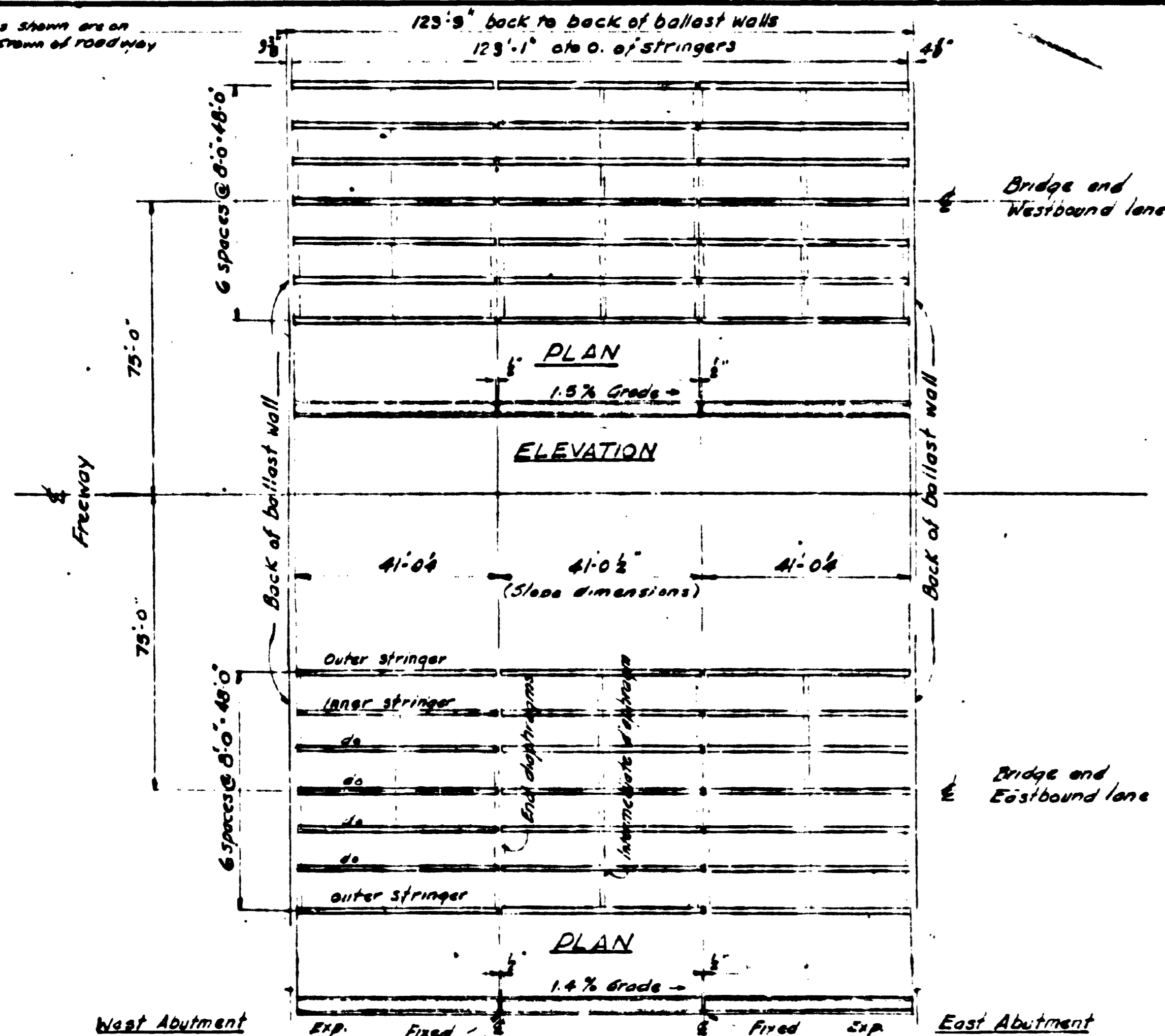
CHILLIWACK DISTRICT
TRANS-CANADA HIGHWAY MILE 105.01
BRADNER ROAD OVERPASS
LAYOUT, DOWEL PLAN & KEY MAP
SCALE: 1" = 20 FT. AND AS NOTED

REVISIONS			
Rev.	Particulars	Init.	Date
A	As built	R.L.A.	5/1/65

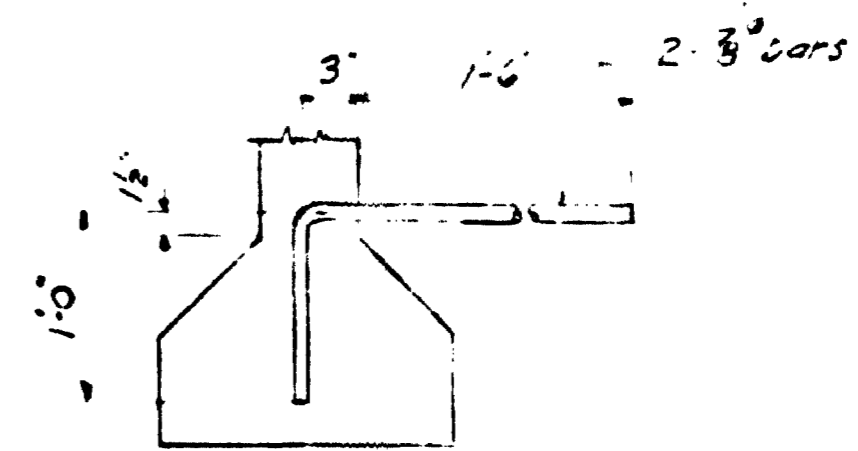
GOVT. OF BRITISH COLUMBIA
DEPT. OF HIGHWAYS
BRIDGE ENGINEER'S OFFICE

Made by	Init.	Date	DRAWING NO.
Checked by	Init.	Date	
Approved	Init.	Date	1608-3

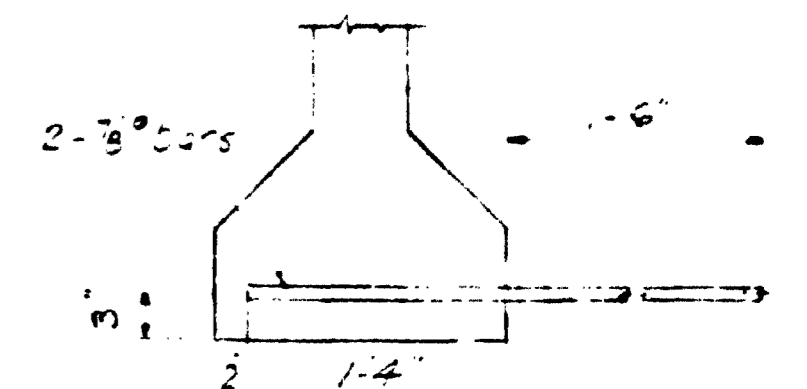
Note: Dimensions shown are on grade at crown of roadway



DETAIL OF SOLE PLATE
3# - Required
Scale 1/2" = 1'-0"

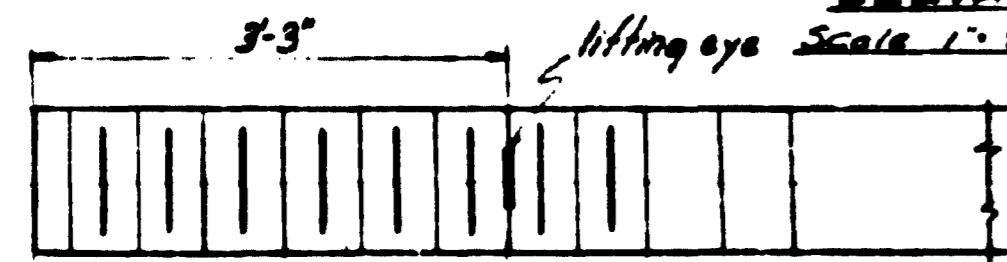


DETAIL "A"

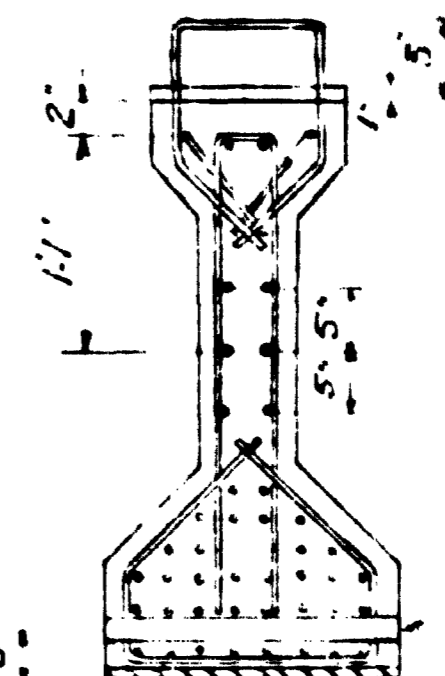
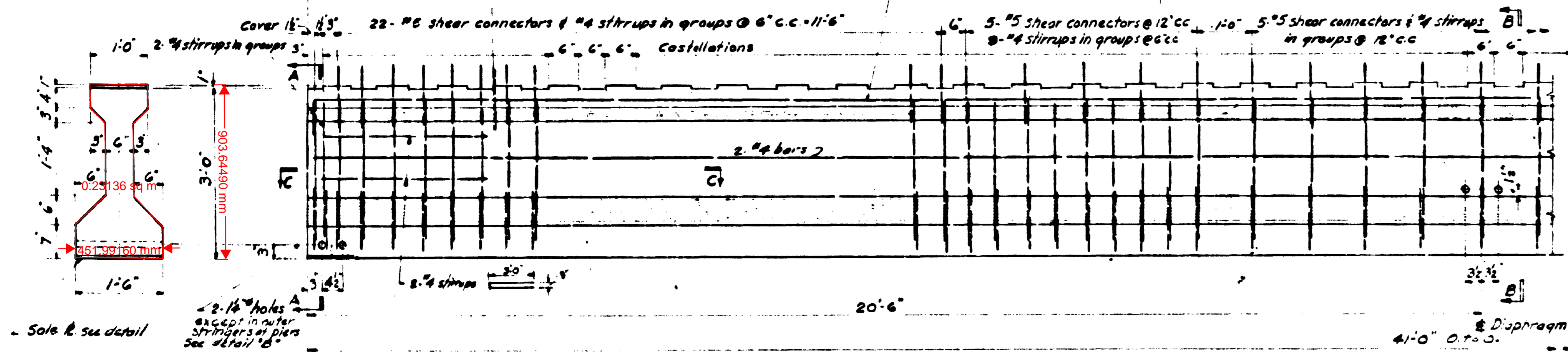


DETAIL "B"

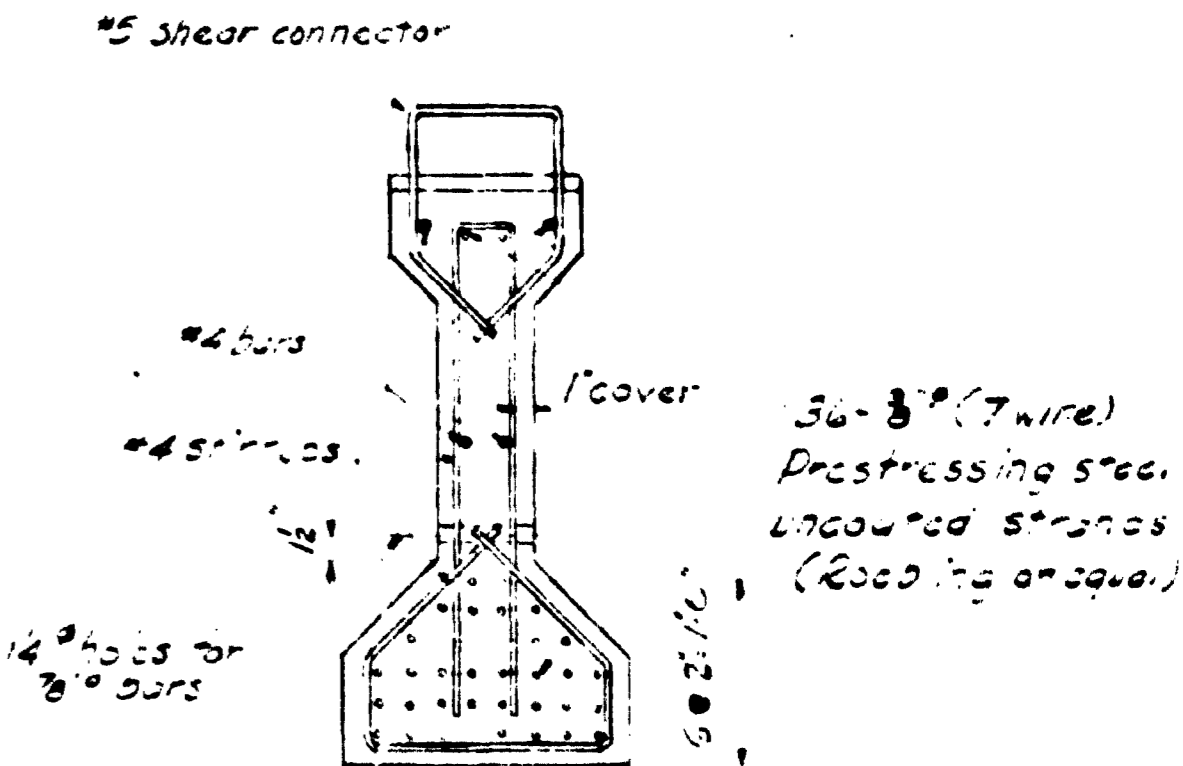
ELEVATION
Scale 1" = 20' 0"



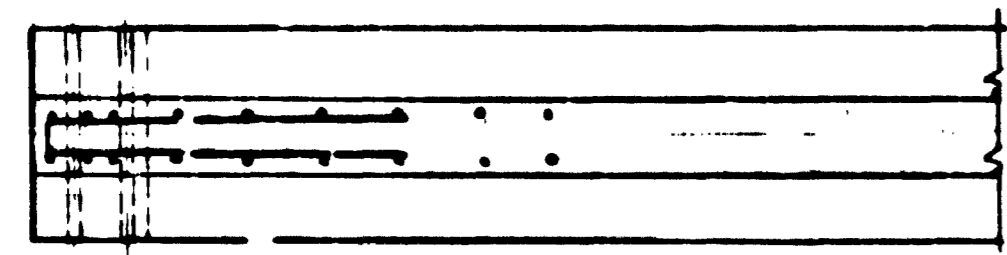
Symm. abt. & except as noted



SECTION A-A



SECTION B-B



SECTION C-C

STRINGER

(Inner stringer shown
Outer stringer similar except as noted)

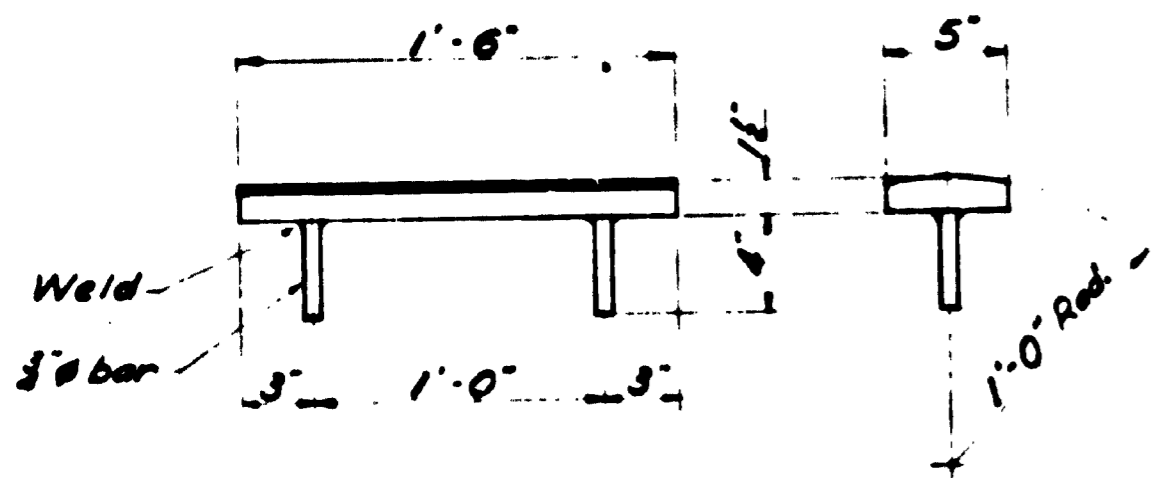
NOTES:

1. Prestressing strands to be 3/8" (7 wire) uncoated strands (Roading 55 grade or equal). Minimum ultimate tensile strength = 25,000 lbs per strand. Test load at time of release of strands = 18,000 lbs per strand.
2. Concrete minimum compressive strength at concrete at time of release of strands = 4500 psi. Min. compressive strength of concrete at 28 days = 5500 psi.
3. Reinforcing to have 14" min. cover unless noted otherwise.
4. Reinforcing to be structural grade, splices to be staggered, lap of bars 48x.
5. Lengths of stringers given (28) to be attained at 28 days after placing concrete.
6. Paint ends of stringers with asphaltic material.

42- 41'-0" Prestressed stringers reqd.

CHILL WACK DISTRICT
TRANS CANADA HIGHWAY MILE 105.01
BRADNER ROAD OVERPASS
PRESTRESSED CONCRETE STRINGERS
SCALE 3/4" = 1'-0" AND AS NOTED

REVISIONS			GOVT. OF BRITISH COLUMBIA DEPT. OF HIGHWAYS BRIDGE ENGINEER'S OFFICE												
No.	Particulars	Date													
			<table border="1"> <tr> <td>Made by</td> <td> </td> <td>Date</td> <td rowspan="2">DRAWING NO.</td> </tr> <tr> <td>Checked by</td> <td>F.P.</td> <td>Nov 6, 55</td> <td>BRIDGES</td> </tr> <tr> <td>Approved</td> <td> </td> <td> </td> <td>1608-5</td> </tr> </table>	Made by		Date	DRAWING NO.	Checked by	F.P.	Nov 6, 55	BRIDGES	Approved			1608-5
Made by		Date		DRAWING NO.											
Checked by	F.P.	Nov 6, 55	BRIDGES												
Approved			1608-5												



BEARING DETAILS

Scale: 1/2" = 1'-0"

No. required = 20
 Estimated weight of each = 395 lbs.

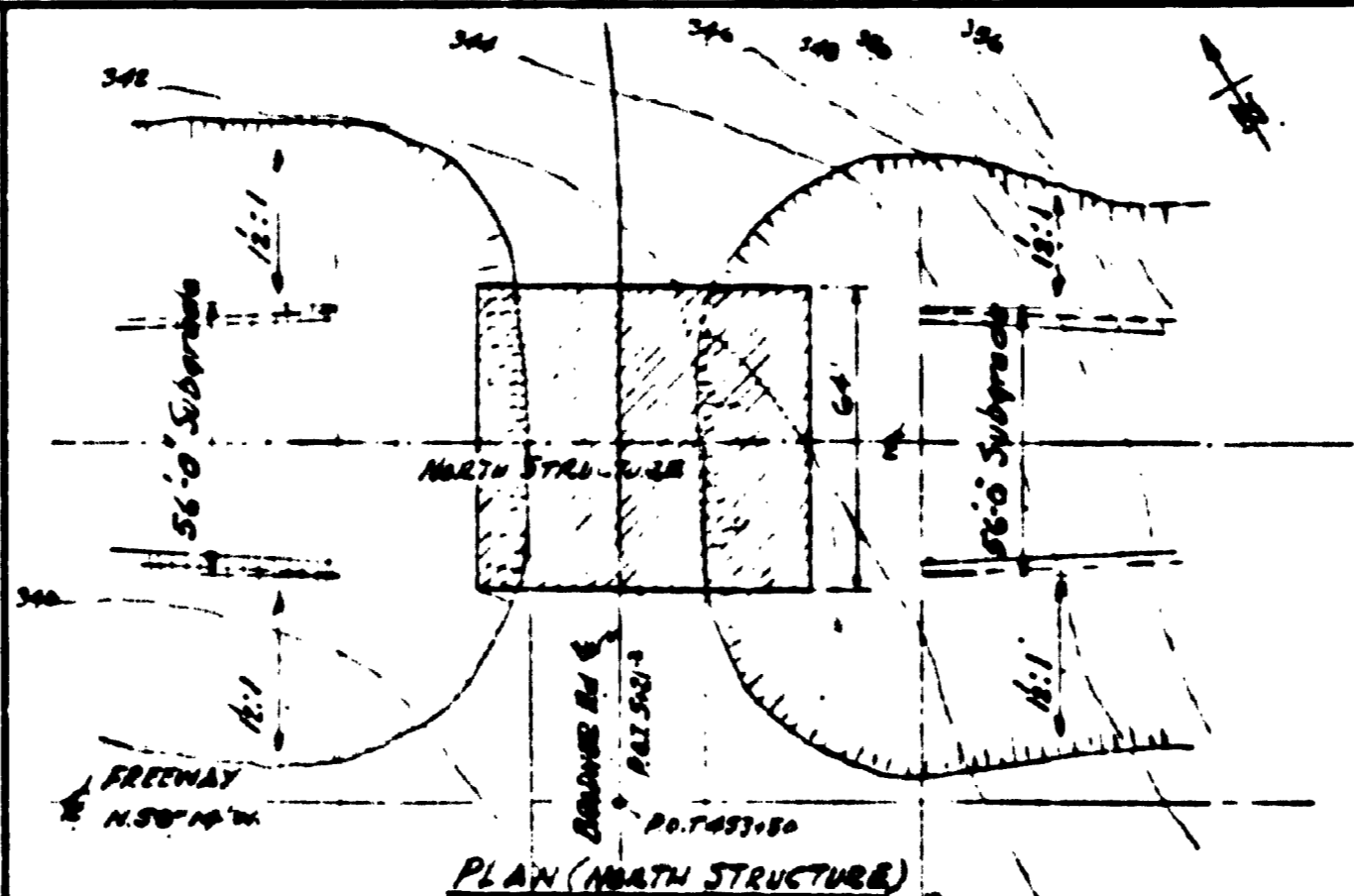
Total weight = 1106 lbs.

GOVT. OF BRITISH COLUMBIA, DEPT. OF HIGHWAYS
 BRIDGE ENGINEER'S OFFICE.

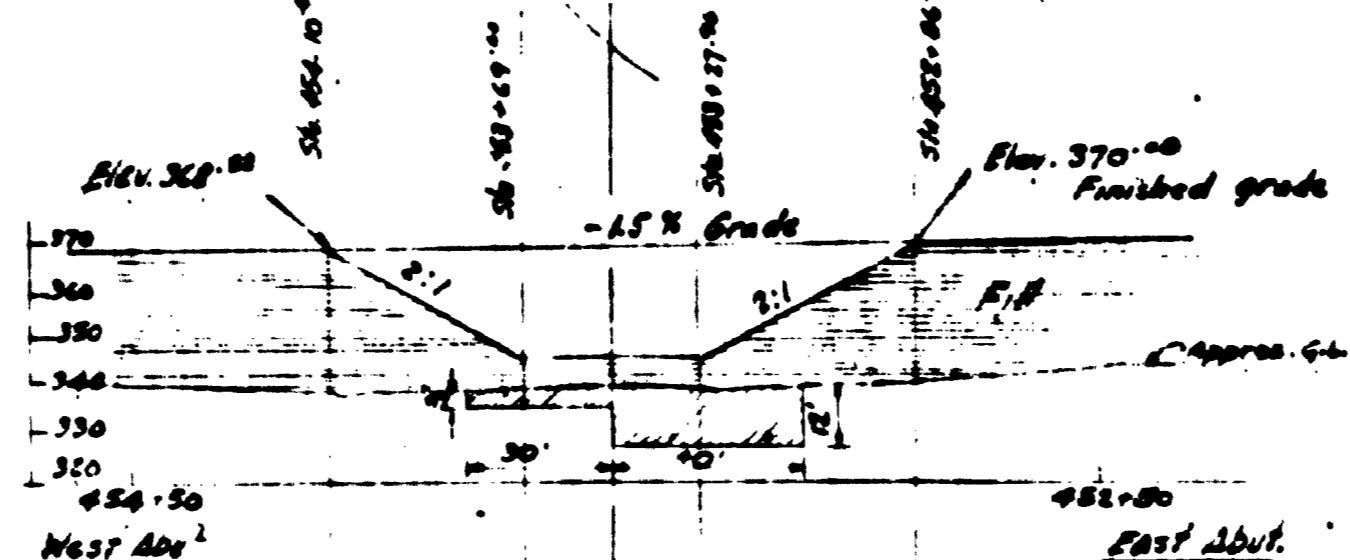
CHILLIWACK DISTRICT
 BRADNER ROAD OVERPASS
 BEARINGS

Made by	Checked by
Inch. Date	Inch. Date
W.T.W. 5/11/59	P.P. 11/1/59
Approved:	

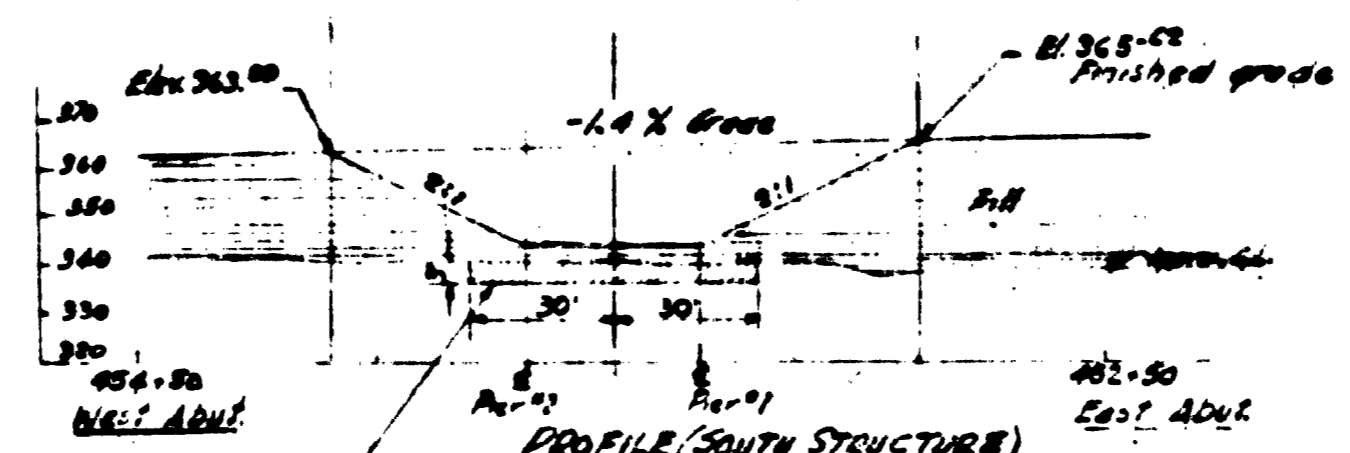
S. K.
 BRIDGES
 1608-7



PLAN (NORTH STRUCTURE)



PROFILE (NORTH STRUCTURE)



PROFILE (SOUTH STRUCTURE)

Note: 60" x 42" x 5" deep excavation for Piers #1 & #2 on South Structure only.
 Scale: 1" = 40 FT.

GOVT. OF BRITISH COLUMBIA, DEPT. OF HIGHWAYS
 BRIDGE ENGINEER'S OFFICE.

TRANS-CANADA HIGHWAY MILE 105.01
 BRADNER RD. OVERPASS
 PACING OF FILLS

Made by	Checked by
Inch. Date	Inch. Date
W.T.W. 5/11/59	P.P. 11/1/59
Approved:	

S. K.
 BRIDGES
 1608-8

DEPARTMENT OF HIGHWAYS
 BRIDGE ENGINEER'S OFFICE

SCHEDULE OF MATERIAL
 BRADNER ROAD OVERPASS
 CHILLIWACK DISTRICT
 TRANS-CANADA HIGHWAY
 MILE 105.01

Sheet No. 1 of 1
 Dwg. File No. 1608
 Corr. File No. 917
 Made by W.T.W.S.
 Date MAY, 23/59
 Checked by P.P.
 Date Nov. 6, 59

ITEM	QUANTITY	DESCRIPTION	BILL	DRAWING	WEIGHT POUNDS	REQ'D
------	----------	-------------	------	---------	---------------	-------

SUBSTRUCTURE

- 3395 lbs. Cement
- 1 Lot. Reinforcing steel x2 1608-4 37,300
- 16 gals. Air Entraining Agent

SUPERSTRUCTURE

- 42 only Prestressed concrete Stringers 41'-0" lg. 1608-5
- 1 Lot. Bearings x2 1608-7 1106
- 382-5 lbs. Rails for Pipe Railing x1
- 60 only. Railing Post Assemblies 587-9B
- 48 only. Rail Caps 587-9B
- 2 qts. Alkali Resistant Bituminous Paint
- 6 lbs. Aluminum Impregnated Caulking Compound

DECK

- 2576 lbs. Cement
- 1 Lot. Reinforcing steel x3 1608-6 93,000
- 26 gals. Joint sealing compound
- 8 gals. Gray joint sealing compound
- 220 lin ft 4" corrugated rubber waterstop
- 700 lin ft 2" x 2" pre-molded joint filler
- 200 lin ft 2" x 4" " " " "
- 480 lin ft 2" x 8" " " " "
- 28 pcs. 6" Lead sheet 18" x 15"
- 12 gals. Air entraining agent
- 2 rolls. Saturated cotton fabric 36" wide x 50' lg.
- 10 gals. Asphalt waterproof gum

GOVERNMENT OF BRITISH COLUMBIA
DEPARTMENT OF HIGHWAYS
BRIDGE ENGINEER'S OFFICE

BILL No. 1608-X1
SHEET No. 1 of 1
FILE No. 917
MADE BY J.T.W.S.
DATE MAY, 23/59
CHECKED BY K.W.
DATE Nov 6/59

BILL OF RAILS FOR PIPE

RAILING

NAME OF WORK BRADNER ROAD OVERPASS

CHILLIWACK DISTRICT

TRANS-CANADA HIGHWAY
MILE 105.01

Revisions	Rev	Made by	Checked by	Date
A				
B				
C				

ITEM No.	QUANTITY	SIZE	MARK	DESCRIPTION	LM. FT.
<p>Rails shall be galvanized steel tubing (minimum wall thickness 12 B.W.G.) or aluminum alloy tubing (minimum wall thickness 6") as ordered. All pieces mark A1 and A2 are to be supplied with one rail cap as shown on Dwg. No. SK 587-92. Caps to be shop fitted. All above as per specifications.</p>					
1.	32	5" O.D.	Mk A1	Rails 11'-1 1/2" lg.	355'-6"
2.	16	"	Mk A2	" 11'-0 1/2" lg.	176'-6"
3.	32	"	Mk B1	" 9'-5" lg.	301'-6"
4.	16	"	Mk B2	" 9'-4" lg.	149'-6"
<u>Total</u>					<u>982'-6" lin. ft.</u>

GOVERNMENT OF BRITISH COLUMBIA
DEPARTMENT OF HIGHWAYS
BRIDGE ENGINEER'S OFFICE

BILL No. 1608-X2
SHEET No. 1 of 1
FILE No. 917
MADE BY J.T.W.S.
DATE MAY, 23/59
CHECKED BY P.P.
DATE Nov 6/59

BILL OF REINFORCING STEEL

FOR SUBSTRUCTURE

NAME OF WORK BRADNER ROAD OVERPASS

ITEM No.	NO. REQ'D	MARK	SIZE	LENGTH	TOTAL LENGTH	BENDING DIMENSIONS											
						A	B	C	D	E	F	G	H	I	J	K	L
1.			"6		9460	Cut and bend to											
2.			"5		13330	suit Dwg. No. 1608-6											
3.			"4		13680												
<u>Total Weight</u>					<u>37,300 lbs.</u>												
<p>Reinforcing bars shall be in accordance with the Canadian Standards Association Specification for Billet Steel Reinforcing Bars No. G30-1938 or with the Specification for Rail Steel Reinforcing Bars No. G31-1938 and subsequent revisions thereof.</p>																	

GOVERNMENT OF BRITISH COLUMBIA
DEPARTMENT OF HIGHWAYS
BRIDGE ENGINEER'S OFFICE

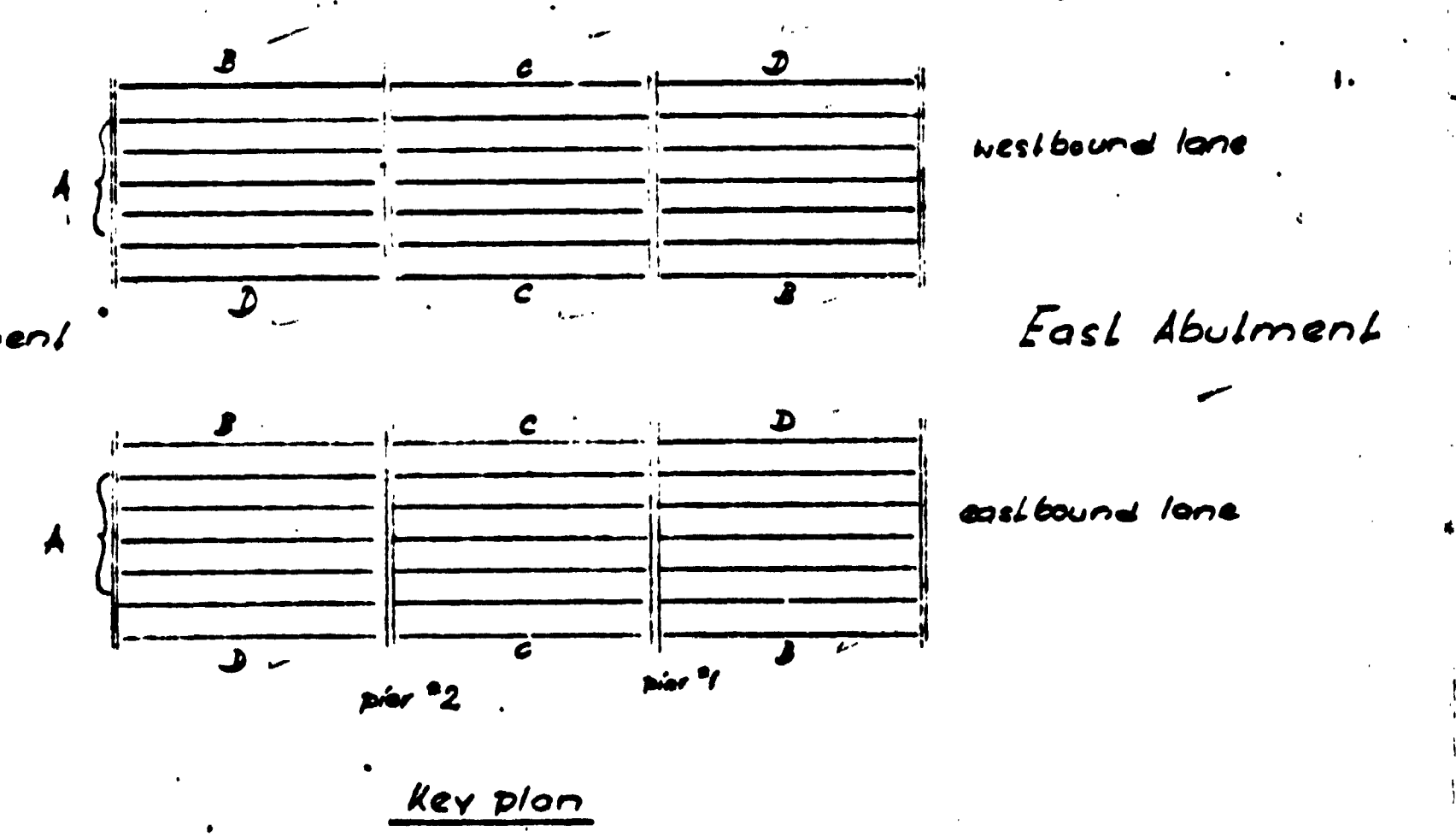
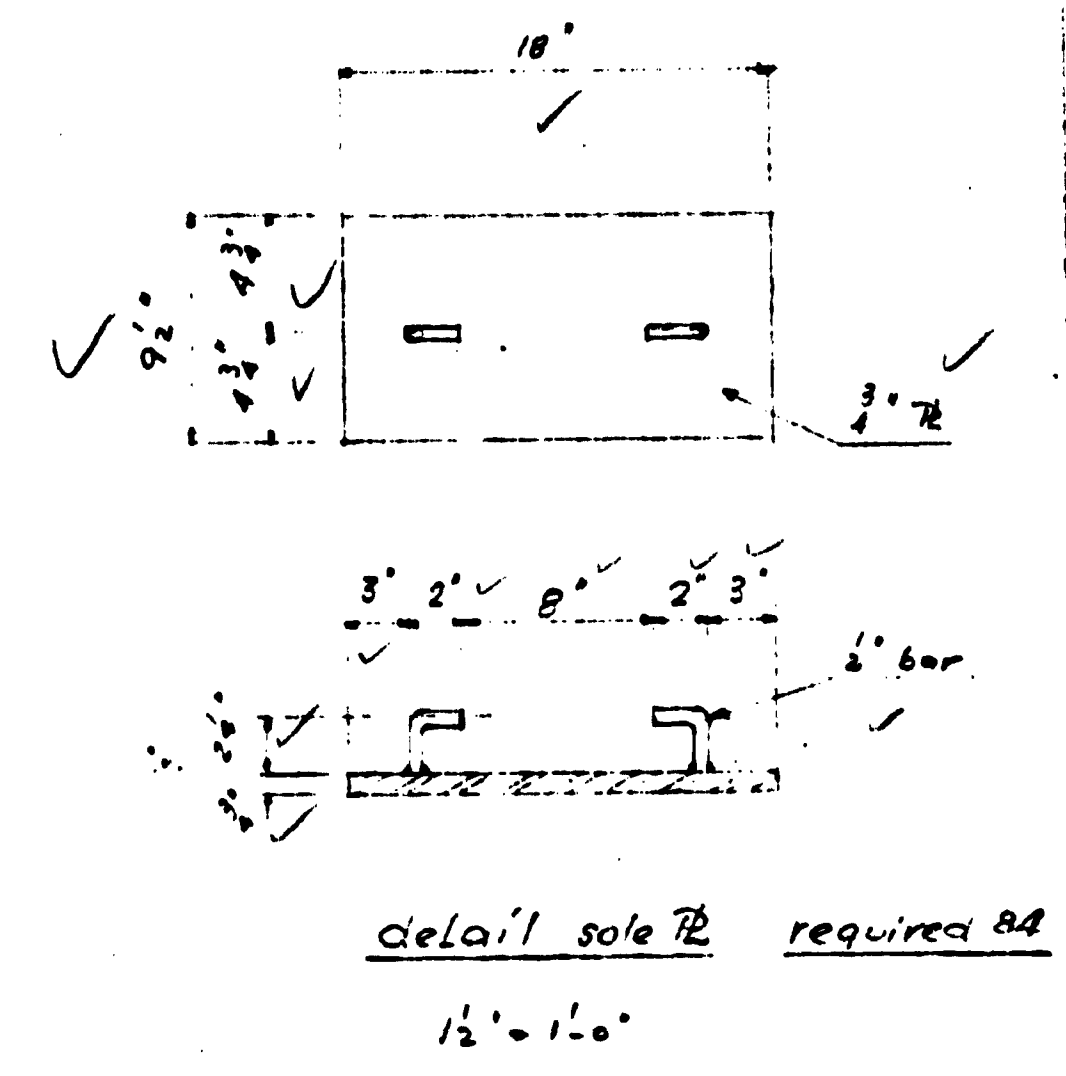
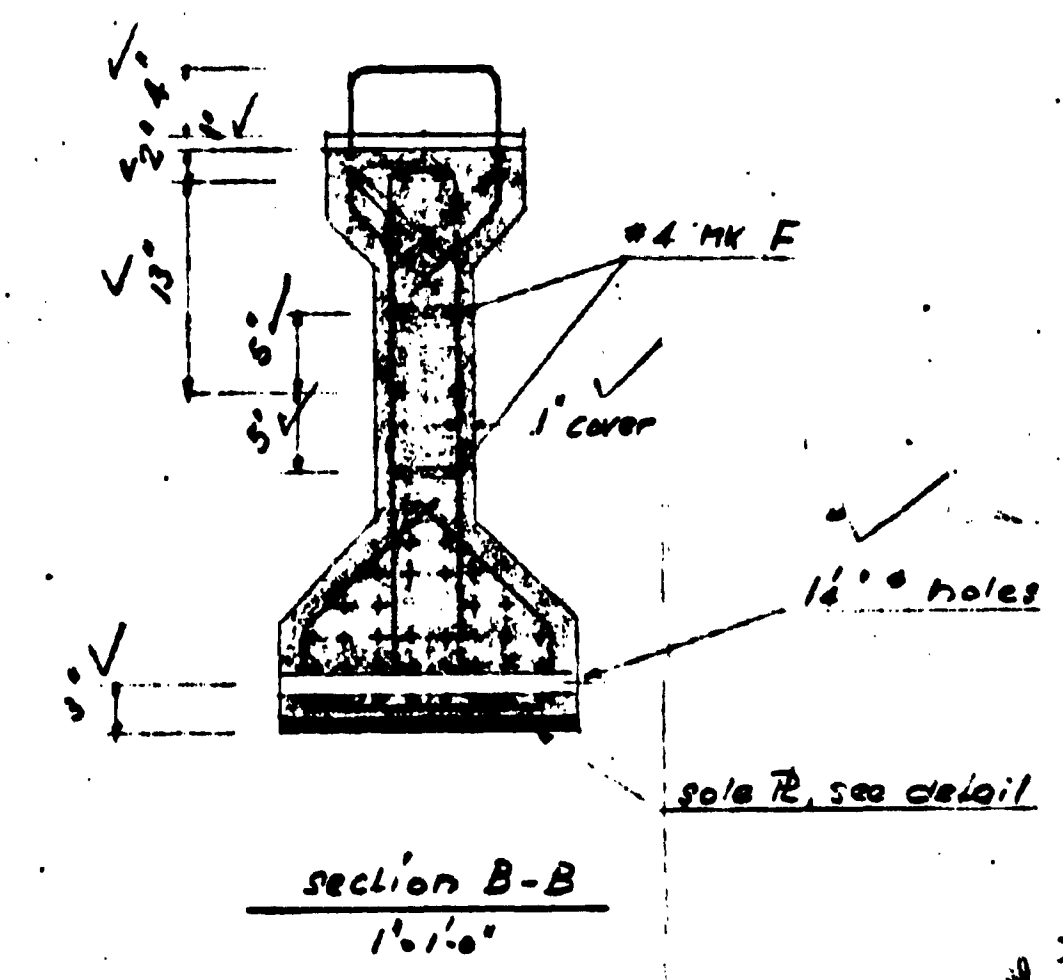
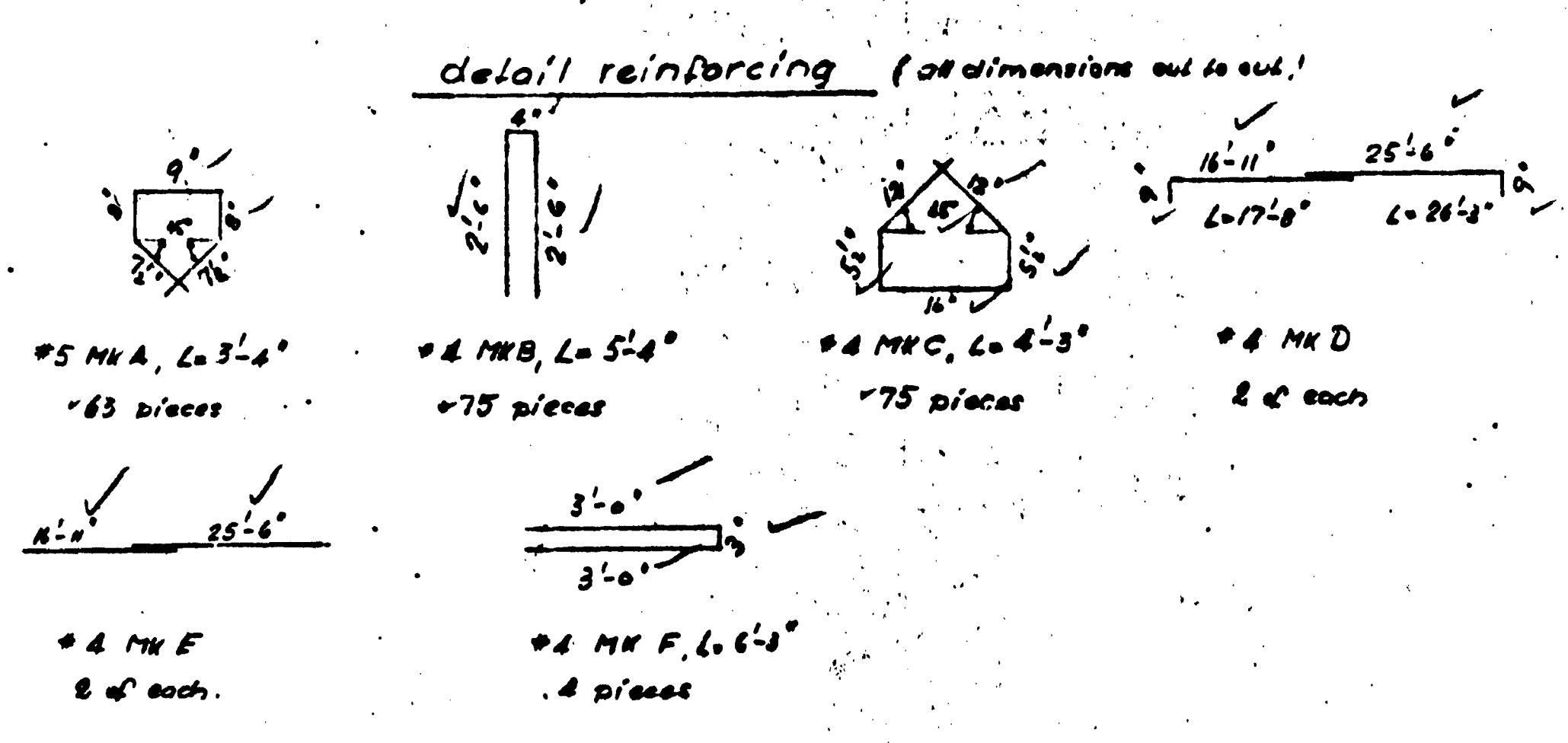
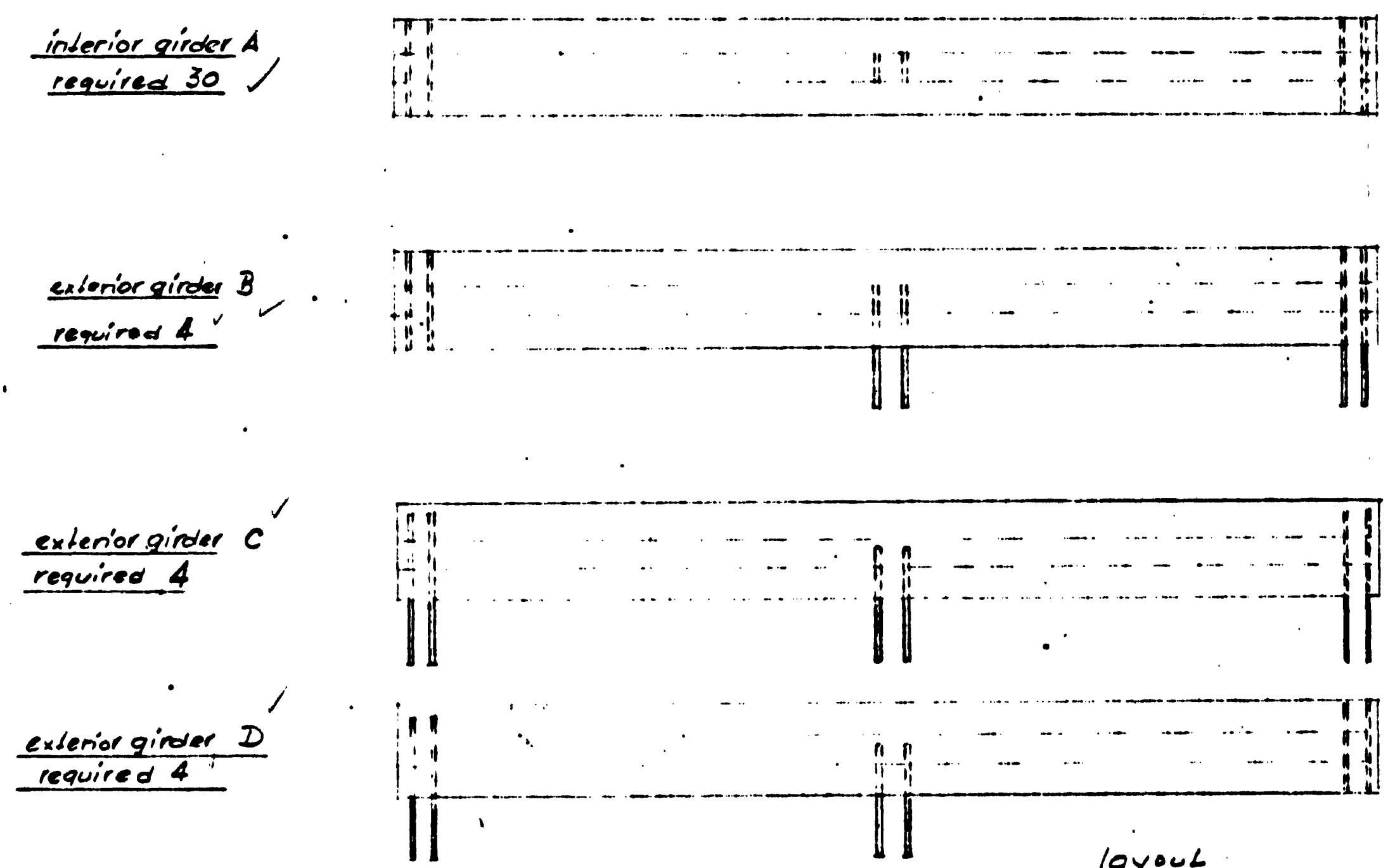
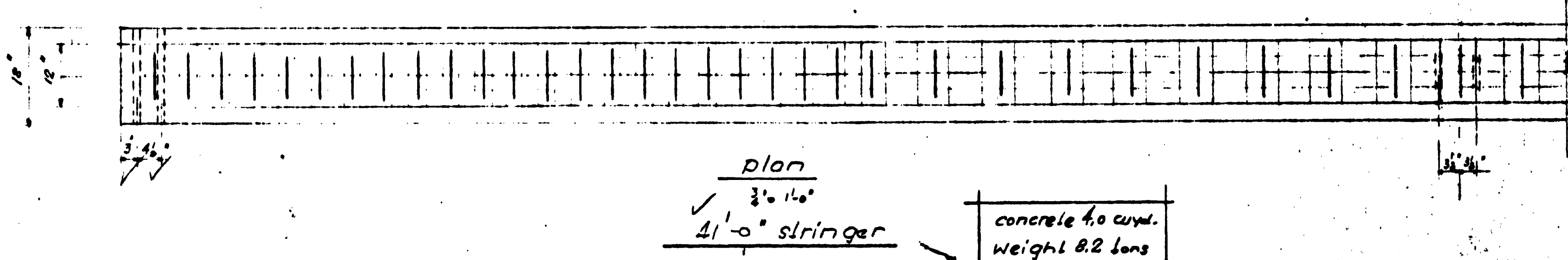
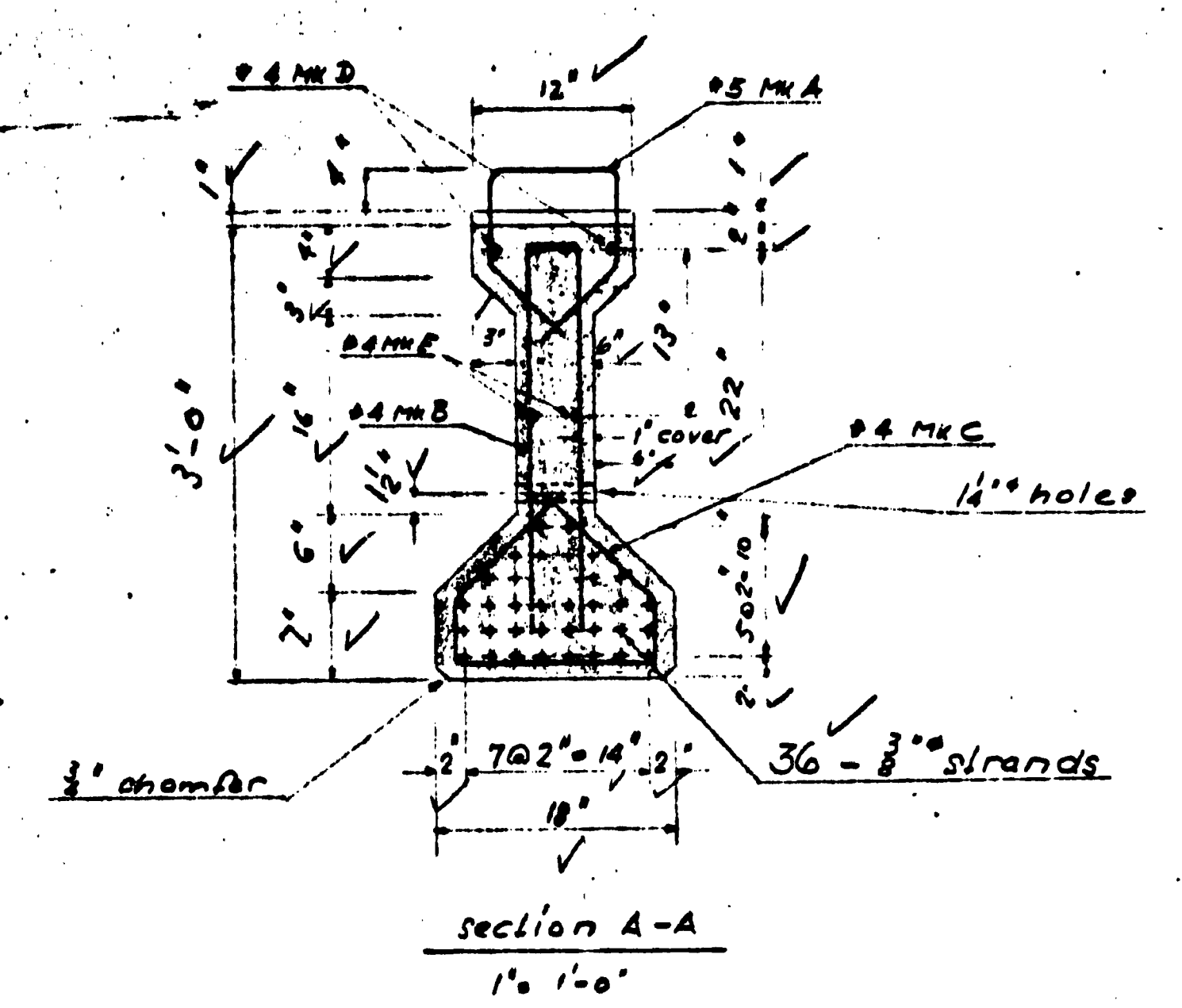
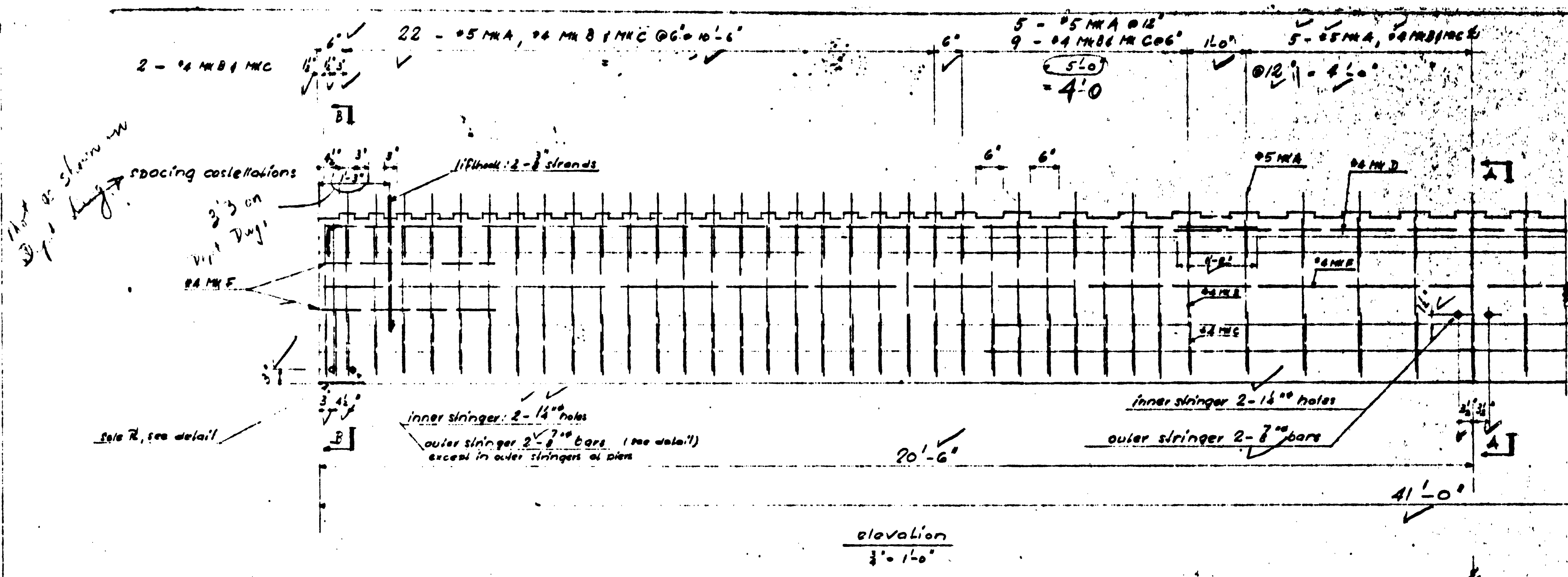
BILL No. 1608-X3
SHEET No. 1 of 1
FILE No. 917
MADE BY J.T.W.S.
DATE MAY, 23/59
CHECKED BY P.P.
DATE Nov 6/59

BILL OF REINFORCING STEEL

FOR SUPERSTRUCTURE

NAME OF WORK BRADNER ROAD OVERPASS

ITEM No.	NO. REQ'D	MARK	SIZE	LENGTH	TOTAL LENGTH	BENDING DIMENSIONS											
						A	B	C	D	E	F	G	H	I	J	K	L
1.			"7		1330	Cut and bend to											
2.			"6		2440	suit Dwg. No. 1608-0											
3.			"5		55120												
4.			"4		42080												
<u>Total Weight</u>					<u>93,000 lbs.</u>												
<p>Reinforcing bars shall be in accordance with the Canadian Standards Association Specification for Billet Steel Reinforcing Bars No. G30-1938 or with the Specification for Rail Steel Reinforcing Bars No. G31-1938 and subsequent revisions thereof.</p>																	



- Notes**
1. Prestressing steel to be $\frac{3}{8}$ \"/>
 2. Min. compressive strength of concrete at time of release 4500 psi at 20 days 5500 psi
 3. Reinforcing to have 1 1/2\"/>
 4. Length of stringers given [] are to be attained at 28 days after placing concrete.
 5. Reinforcing to be structural grade, splices to be staggered, top of bars to be 400.
 6. Ends of stringers to be painted with asphaltic material.

APPROVED
 C. H. J. Allen
 detail couplings
 1'-1-0"

OFFICE COPY

Phone 107-0793
 Superior Concrete Products Ltd.
 551 Seymour Blvd.
 North Vancouver, B.C.

Bradner Road Overpass
 Prestressed Concrete Stringers 41'-0" L.

99882
 Scale as shown
 Made by: [] Date: 01.14.66
 Checked by: [] Date: []
 Approved: []
 Revised: []
 Dwg. 841-5