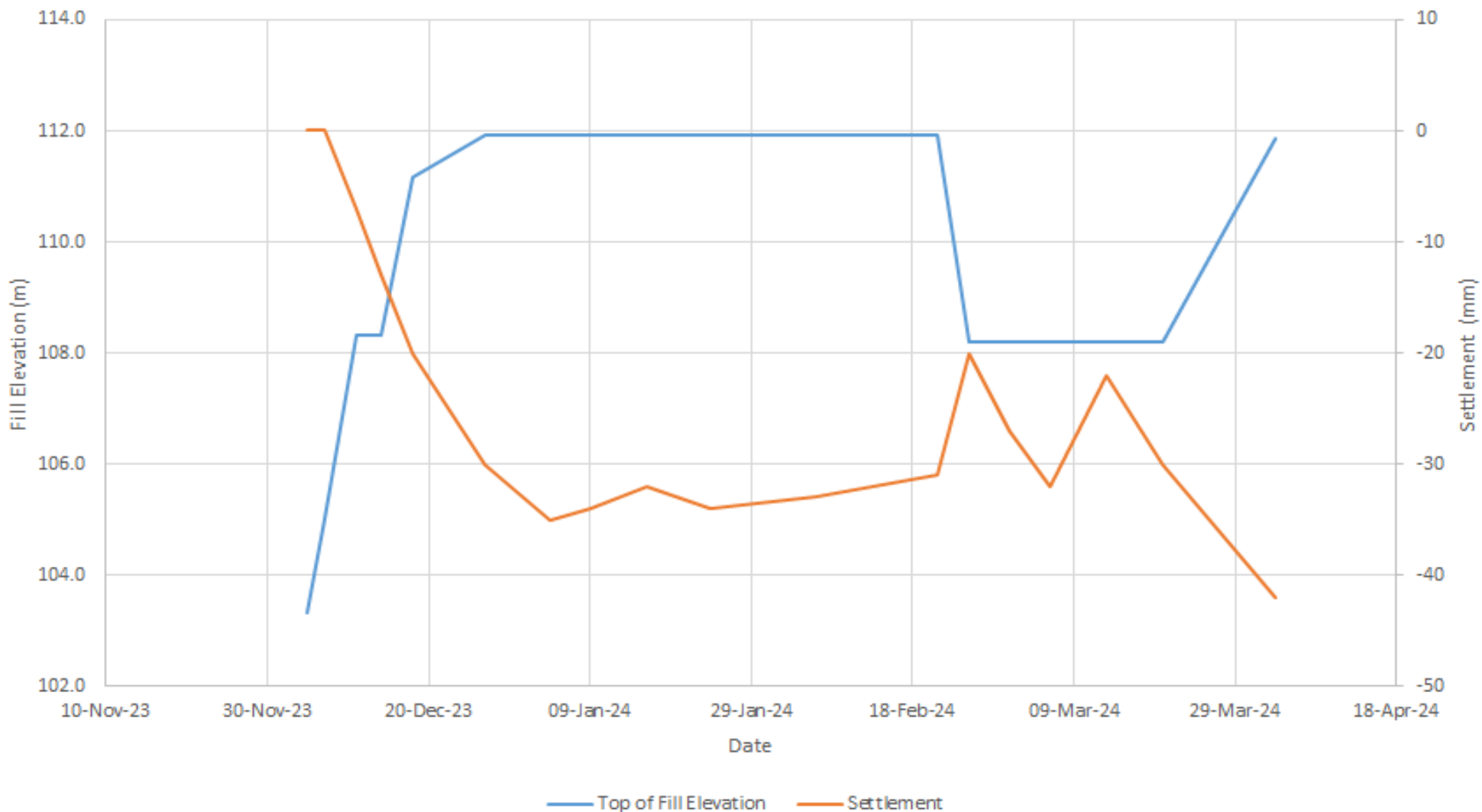


SG-1092+34



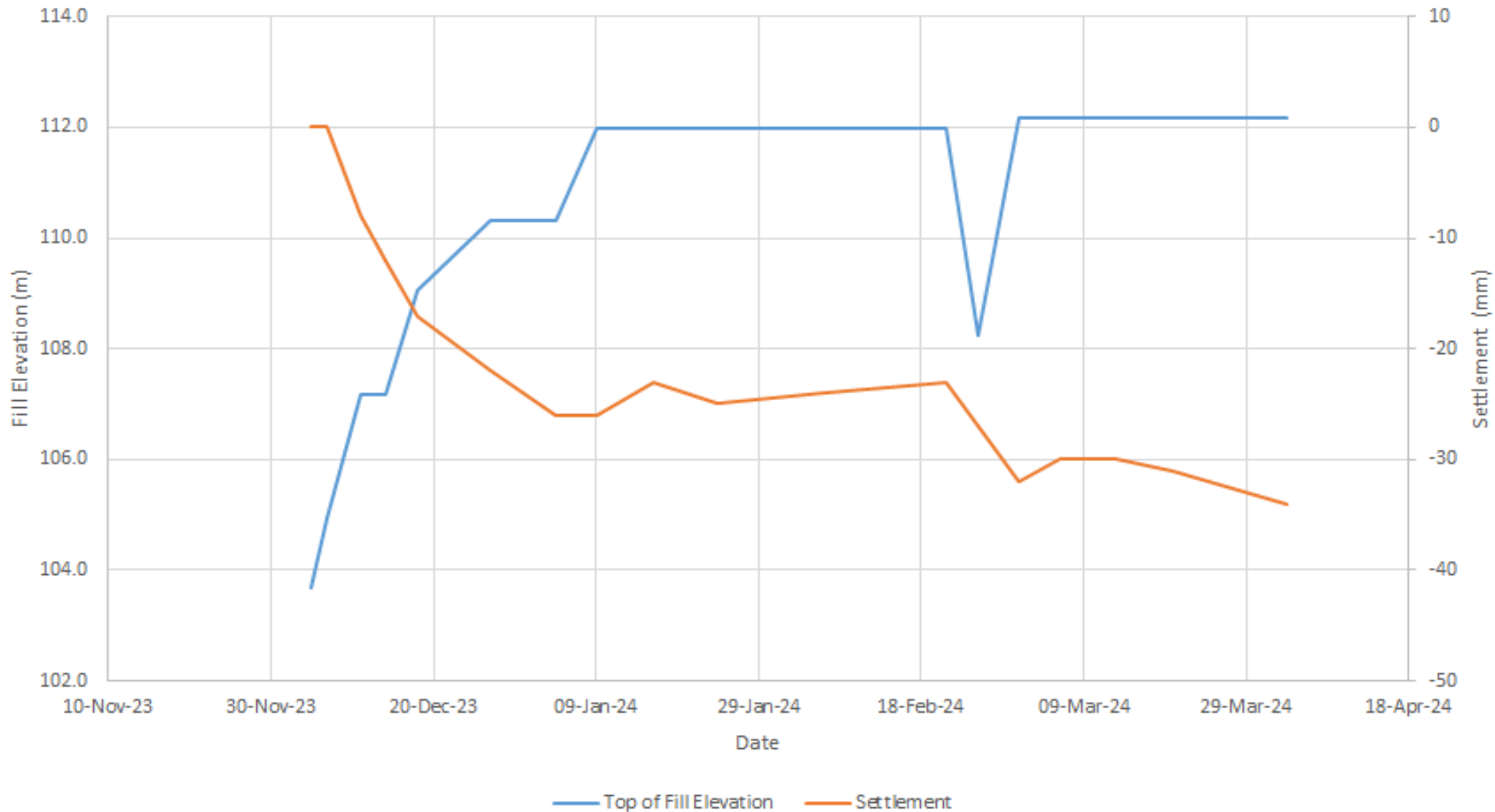
1	YYYY-MM-DD	-	-
REV	DATE	REVISION	BY

LEGEND / NOTES	SEAL
	PERMIT TO PRACTICE




CLIENT NAME	Associated Engineering / ISL Engineering and Land Services Ltd.	DRAWN BY	CJC	DATE	2024-04-11
DRAWING TITLE	SG-1092+34	DESIGNED BY	CJC	SCALE	NTS
PROJECT NAME AND LOCATION	Highway 1 Widening - 264th Street to Whatcom Road (Segment 1) Abbotsford, BC	APPROVED BY	-	PROJECT No.	32079
		DRAWING / FIGURE No.	Figure 11	REV.	-

SG-1092+56



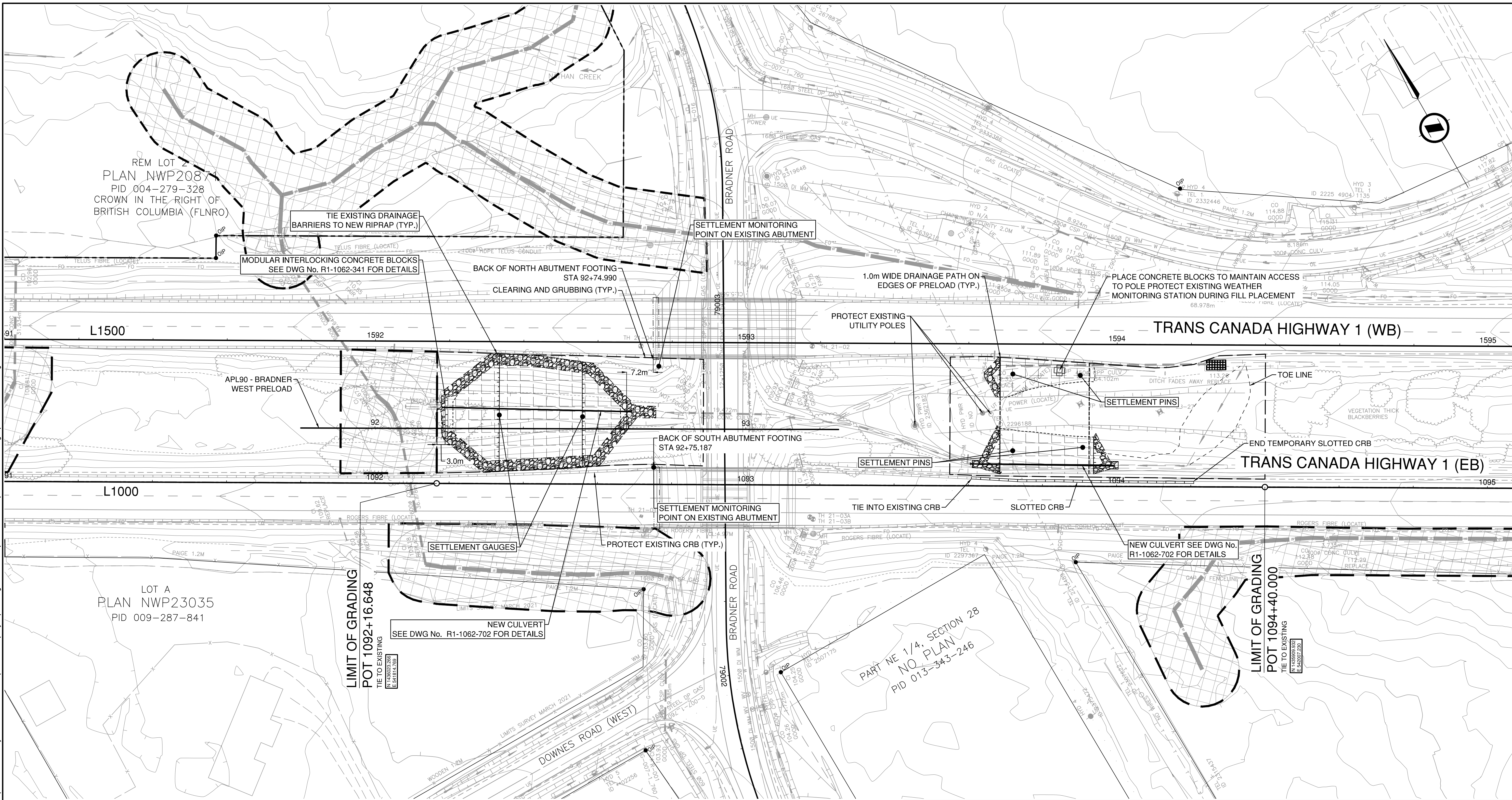
1	YYYY-MM-DD	-	-
REV	DATE	REVISION	BY

LEGEND / NOTES	SEAL	 THURBER
	PERMIT TO PRACTICE	

CLIENT NAME	Associated Engineering / ISL Engineering and Land Services Ltd.
DRAWING TITLE	SG-1092+56
PROJECT NAME AND LOCATION	Highway 1 Widening - 264th Street to Whatcom Road (Segment 1) Abbotsford, BC

DRAWN BY	CJC	DATE	2024-04-11
DESIGNED BY	CJC	SCALE	NTS
APPROVED BY	-	PROJECT No.	32079
DRAWING / FIGURE No.		REV.	-
Figure 12			

PLOT DATE: 2023/07/14 G:\Projects\33000\33000\33036_AE_Hwy1_264-Whatcom\02_CADD\Hwy1_DrawingProduction\X01_Prelod\100_PlanDrawings\R1-XXX-100.dwg



LEGEND

	MEDIAN SOIL REMOVAL AREA - CLEARING & GRUBBING AREA
	CLEARING ONLY (NO GRUBBING)
	NEW PAVEMENT STRUCTURE
	PRELOAD

Material	Classification	Station Range	
		Start Station	End Station
Organic Stripping	Agricultural Quality (AL-)	1052+68.700	1113+00.000
	Industrial Quality (AL-)	1113+00.000	2013+60.000
Type D Excavation	Agricultural Quality (AL-)	2013+60.000	2017+65.000
	Industrial Quality (AL-)	1052+68.700	1059+00.000
	Industrial Quality (AL-)	1059+00.000	1064+39.875
	Agricultural Quality (AL-)	1080+80.000	1084+00.000
	Industrial Quality (AL-)	1084+00.000	1088+49.780
	Agricultural Quality (AL-)	1109+54.664	2017+65.000

PERMIT TO PRACTICE
 ISL ENGINEERING AND LAND SERVICES LTD.
 PERMIT NUMBER: 1000419
 Engineers & Geoscientists BC

CLEARING AREA THIS SHEET : 0.4851 ha
 GRUBBING AREA THIS SHEET : 0.4851 ha

ISL
 SUITE 201, 8506 - 200 STREET
 LANGLEY, BRITISH COLUMBIA, V2Y 0M1
 PH : 604.371.0091 FAX : 604.371.0098

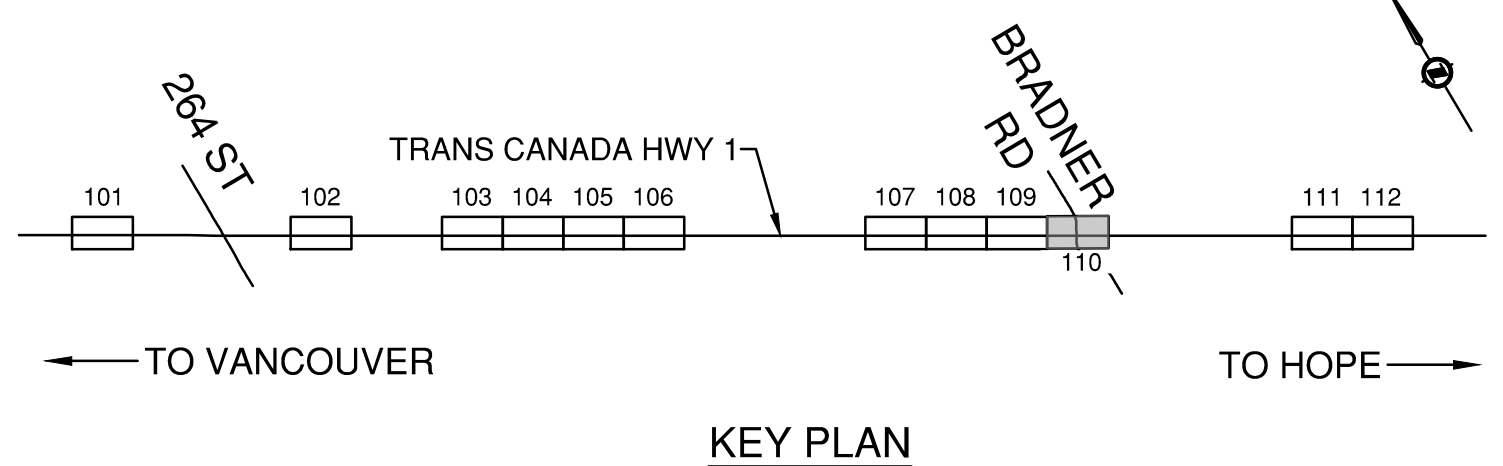
BRITISH COLUMBIA MINISTRY OF TRANSPORTATION AND INFRASTRUCTURE
 SOUTH COAST REGION
 HIGHWAY DESIGN AND GEOMATICS ENGINEERING

FOR PROFILES
 SEE DWG. No. R1-1062-201 TO R1-1062-209

FOR GEOMETRICS AND LANING & SIGNING
 SEE DWG. No. R1-1062-401 TO R1-1062-412

FOR TYPICAL SECTIONS
 SEE DWG. No. R1-1062-301 TO R1-1062-311

FOR SPOT ELEVATIONS
 SEE DWG. No. R1-1062-501 TO R1-1062-512



Professional Seal

SCALE 0 5 1:500 25m

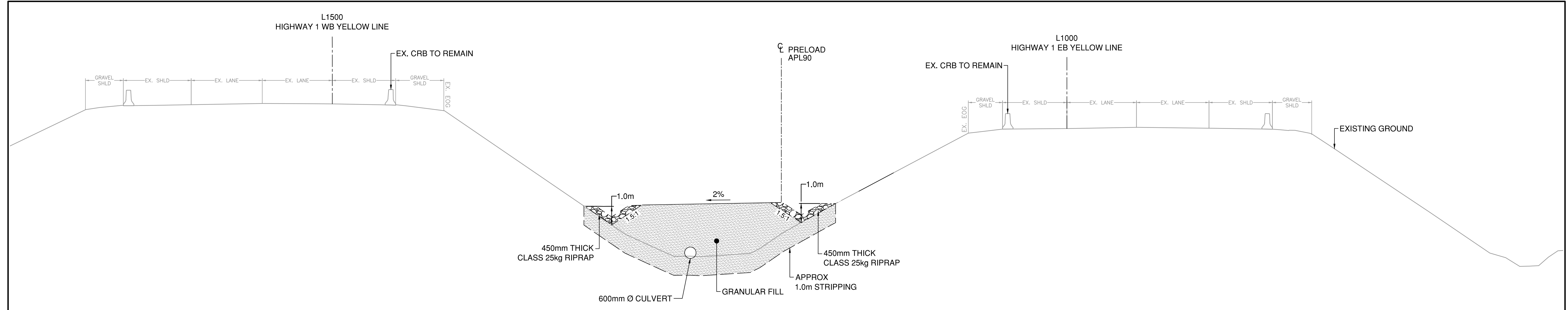
CAD FILENAME: R1-XXX-100.DWG
 PLOT DATE: 2023-07-14

REV	DATE	REVISIONS	NAME

PLAN / DRAINAGE
 HIGHWAY 1 - 264 STREET TO MT LEHMAN ROAD ADVANCED WORKS
 MEDIAN SOIL REMOVAL AND PRELOAD

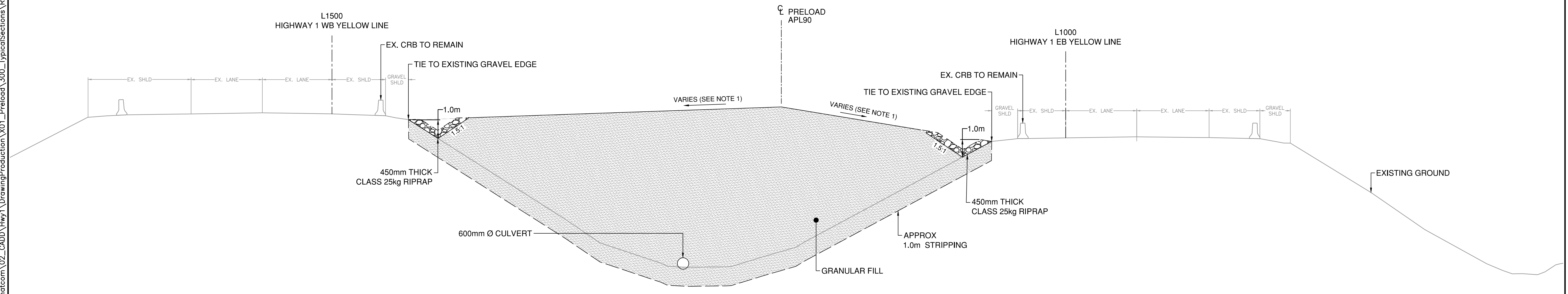
DESIGNED: Y. YUSUF DATE: 2023-07-14	QUALITY CONTROL: A. SANTOS DATE: 2023-07-14
ENGINEER OF RECORD: ANDRE SANTOS, P. ENG.	QUALITY ASSURANCE: A. PELLAM DATE: 2023-07-14
DATE: _____	DRAWN: J. SHIM DATE: 2023-07-14
FILE NUMBER: 33036	PROJECT NUMBER: 12947
REG: 1	DRAWING NUMBER: R1-1062-110
REV: _____	REV: _____

PLOT DATE: 2023/07/14 G:\Projects\33000\33000\33036_AE_Hwy1_264-Whatcom\02_CADD\Hwy1_DrawingProduction\X01_Preload\300_TypicalSections\R1-1062-308-309.dwg



L1000 / L1500 - TRANS CANADA HIGHWAY 1 - WEST AND EAST SLOPES

SECTION @ STA 1092+64
 STA 1092+17.963 TO 1092+33.500 AND STA 1092+55.900 TO 1092+67.838



L1000 / L1500 - TRANS CANADA HIGHWAY 1 - FULL HEIGHT

SECTION @ STA 1092+45
 STA 1092+33.500 TO 1092+55.900

- FOR PLAN / DRAINAGE
SEE DWG. No. R1-1062-101 TO R1-1062-112
- FOR PROFILES
SEE DWG. No. R1-1062-201 TO R1-1062-209
- FOR GEOMETRICS AND LANING & SIGNING
SEE DWG. No. R1-1062-401 TO R1-1062-412
- FOR SPOT ELEVATIONS
SEE DWG. No. R1-1062-501 TO R1-1062-512

NOTES:
 1. PRELOAD CROSSFALL TO BE MINIMUM 2%.

PERMIT TO PRACTICE
 ISL ENGINEERING AND LAND SERVICES LTD.
 PERMIT NUMBER: 1000419
 Engineers & Geoscientists BC

Professional Seal

 SUITE 201, 8506 - 200 STREET LANGLEY, BRITISH COLUMBIA, V2Y 0M1 PH: 604.371.0091 FAX: 604.371.0098	 MINISTRY OF TRANSPORTATION AND INFRASTRUCTURE SOUTH COAST REGION HIGHWAY DESIGN AND GEOMATICS ENGINEERING	TYPICAL SECTIONS HIGHWAY 1 - 264 STREET TO MT LEHMAN ROAD ADVANCED WORKS MEDIAN SOIL REMOVAL AND PRELOAD
SCALE 0 1 1:100 5m CAD FILENAME R1-1062-308-309.DWG PLOT DATE 2023-07-14	DESIGNED <u>B. PEEBLES</u> DATE <u>2023-07-14</u> QUALITY CONTROL <u>A. SANTOS</u> DATE <u>2023-07-14</u> QUALITY ASSURANCE <u>A. PELLAM</u> DATE <u>2023-07-14</u> ENGINEER OF RECORD <u>ANDRE SANTOS, P.ENG.</u> DATE _____ DRAWN <u>J. SHIM</u> DATE <u>2023-07-14</u>	
REV DATE REVISIONS NAME	FILE NUMBER 33036	PROJECT NUMBER 12947-0001
REG DRAWING NUMBER REV	REG 1	DRAWING NUMBER R1-1062-308