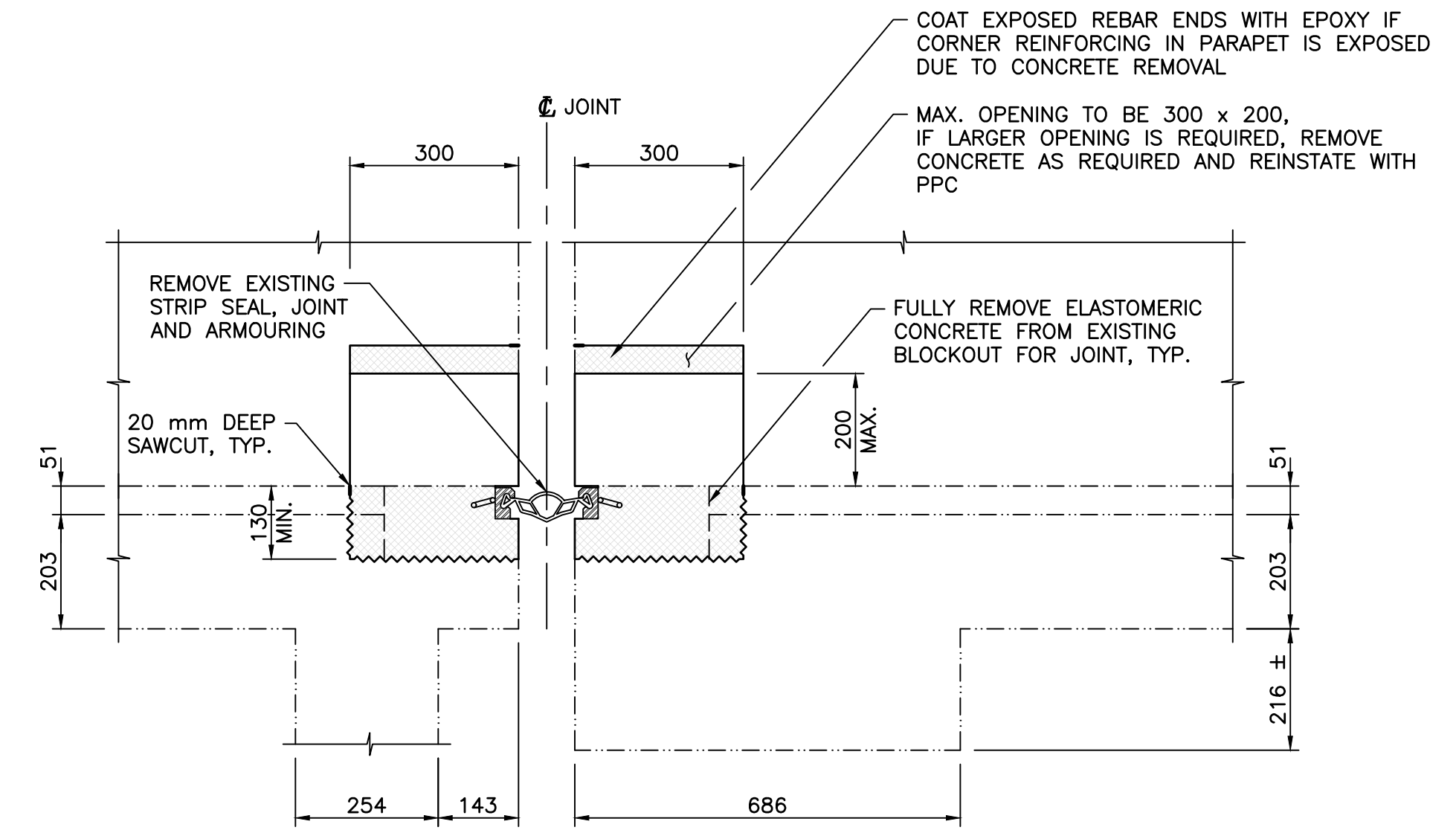
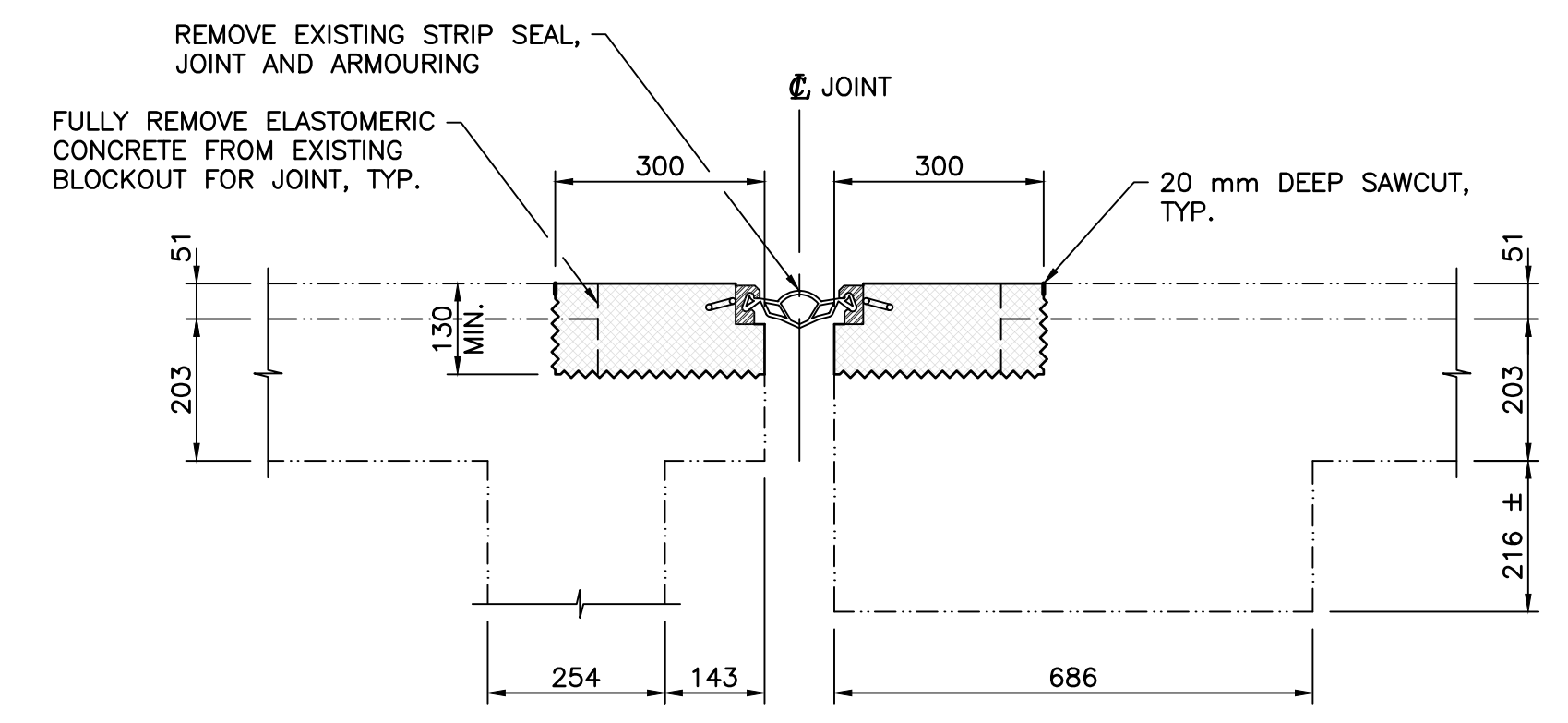


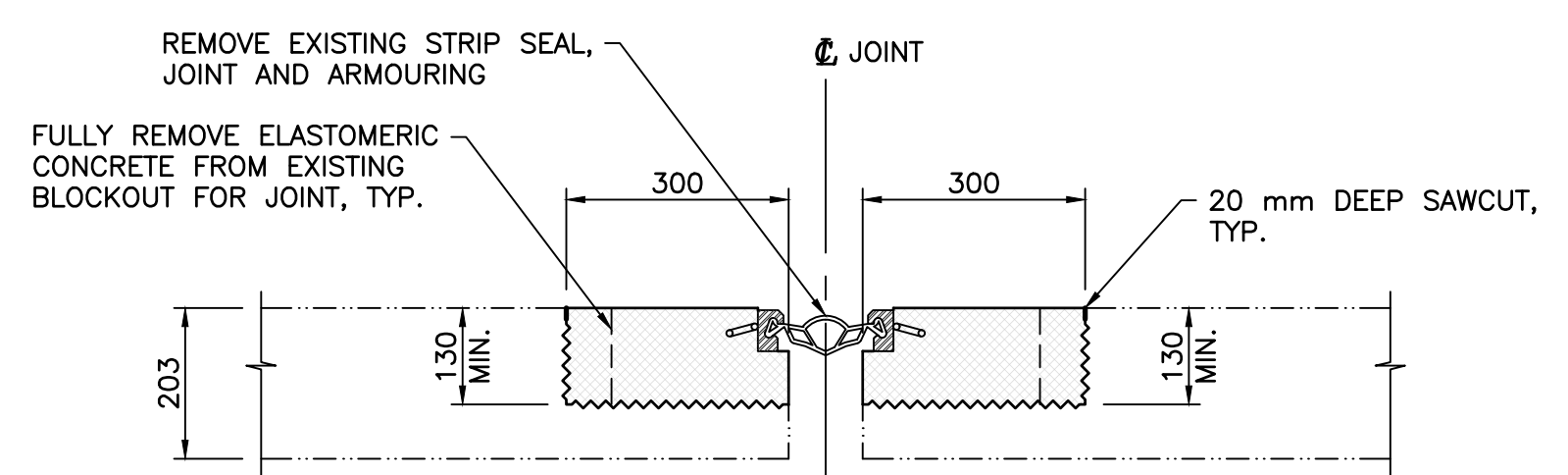
PLAN
SCALE 1:25



GIRDER PATCH

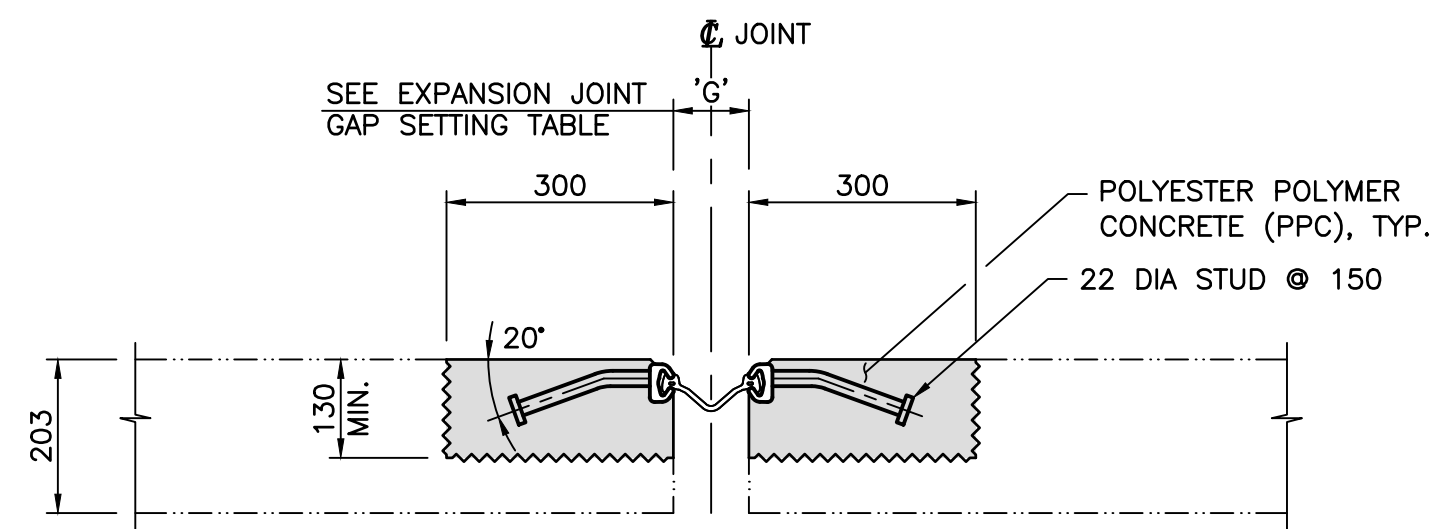
PIER N5 SOUTHBOUND SLOW LANE (2nd GIRDER FROM EAST) - PATCH OVER EXPOSED REBAR WITH PLANITOP

PIER S5 NORTHBOUND FAST LANE (DECK TRIMMER BEAM ON NORTH SIDE OF JOINT - EXPOSED TRANSVERSE BARS AND SOME LONGITUDINAL BARS) USE PLANITOP TO COVER

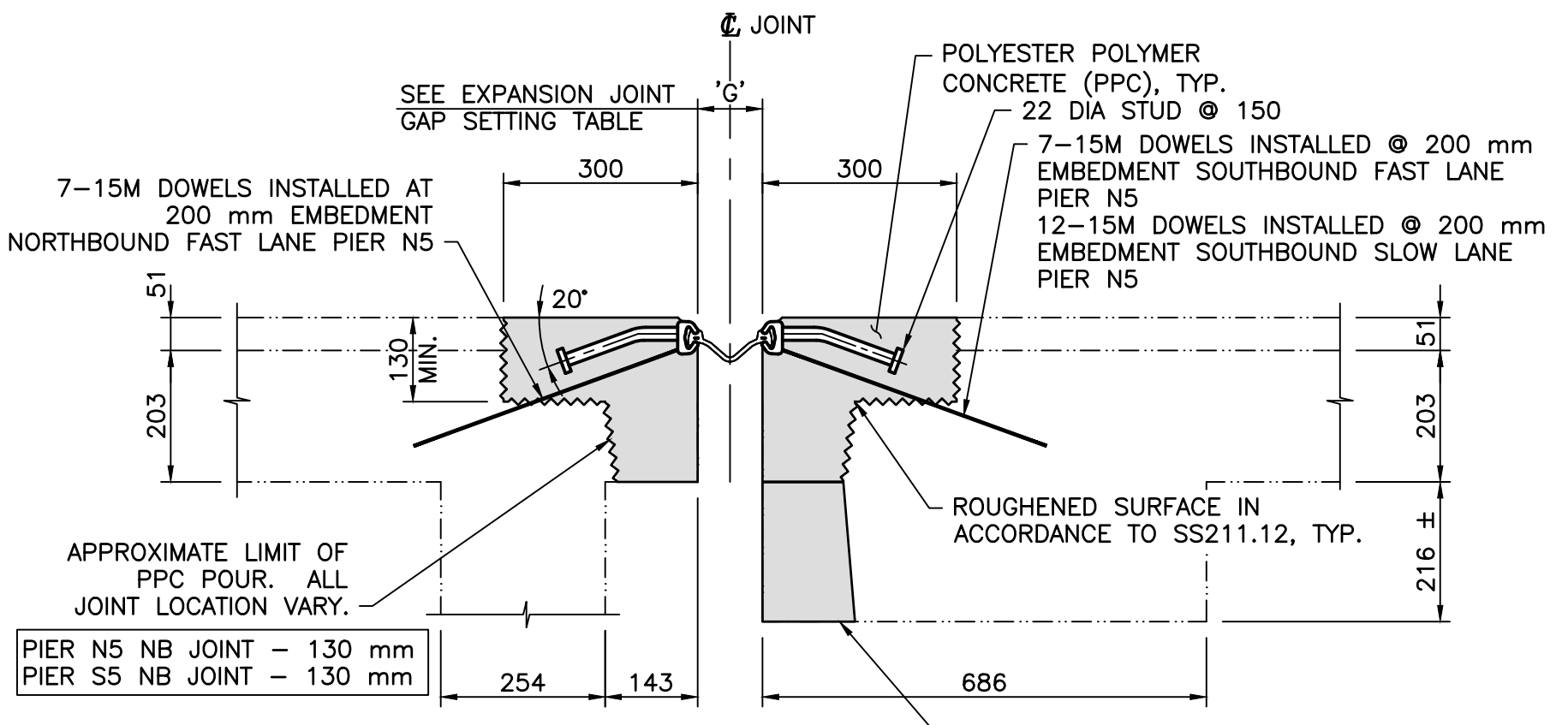


EXPANSION JOINT GAP SETTING						
TEMPERATURE C°	5	10	15	20	25	30
GAP SETTING 'G' *	87	80	72	64	57	49

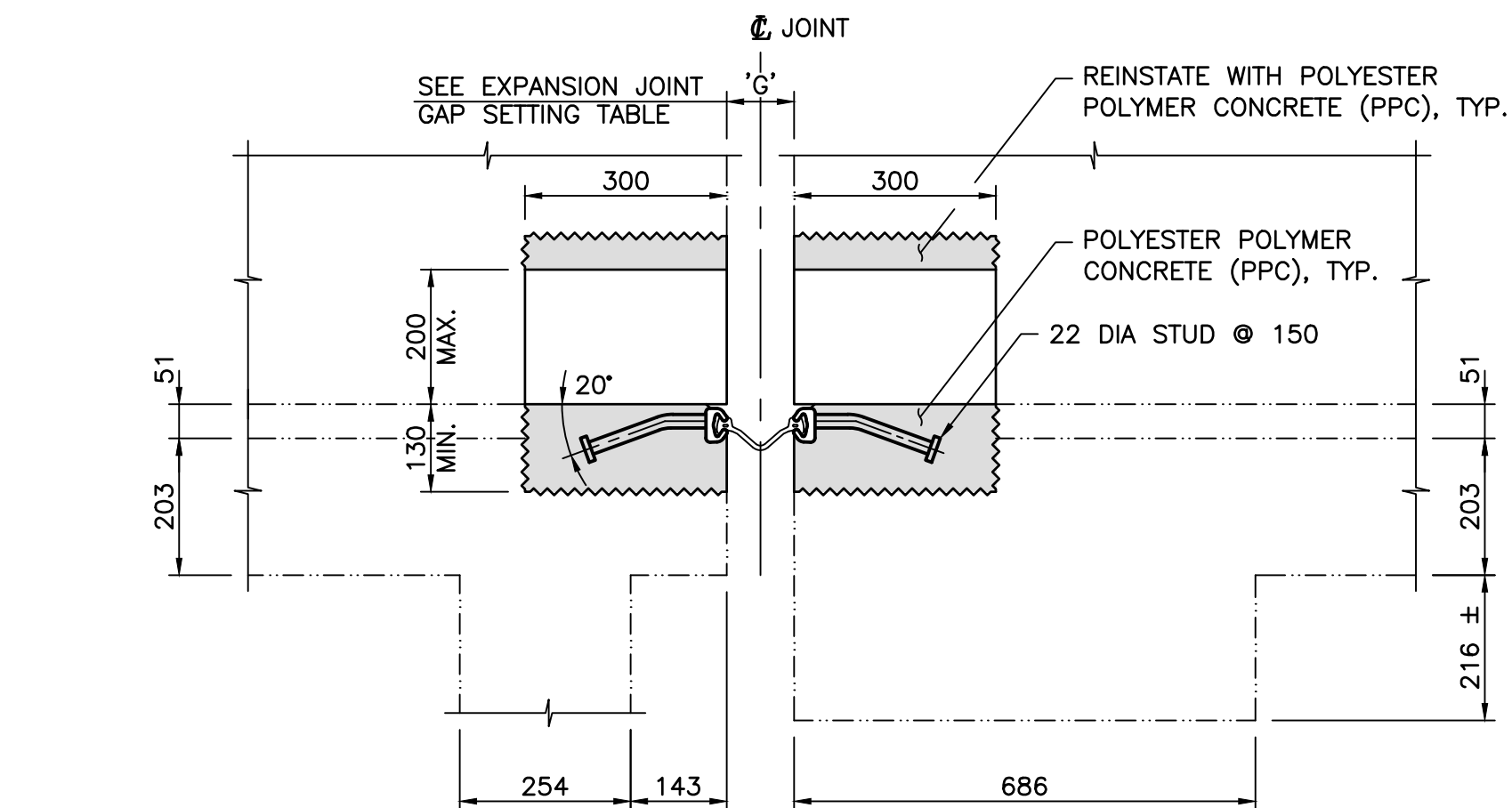
* CONFIRM GAP ON SITE



SECTION F
SCALE 1:10



SECTION D
SCALE 1:10



SECTION E
SCALE 1:10

GENERAL NOTES:

- ALL DIMENSIONS ARE IN MILLIMETRES UNLESS NOTED OTHERWISE.
- ALL DIMENSIONS SHOWN FOR THE EXISTING CONDITION AND COMPONENTS HAVE BEEN TAKEN FROM RECORD DRAWINGS AND SHALL BE CONFIRMED ON SITE BY THE CONTRACTOR.
- THE CONTRACTOR SHALL VERIFY ALL NECESSARY DIMENSIONS IN THE FIELD PRIOR TO ORDERING AFFECTED MATERIAL, PRODUCING SHOP OR TEMPORARY WORKS DRAWINGS OR FABRICATING AFFECTED COMPONENTS.
- CONSTRUCTION SHALL BE IN ACCORDANCE WITH BC MINISTRY (MOTI) BRIDGE CONSTRUCTION SPECIAL PROVISIONS (2015) AS REQUIRED IN THE DRAWING FOR THE FOLLOWING:
 - DEMOLITION OF CONCRETE
 - PREPARATION OF EXISTING CONCRETE SURFACES
 - DECK JOINTS

REPAIR NOTES:

- ALL EXISTING JOINT, ADHESIVE OR GROUT BEDDING TO BE COMPLETELY REMOVED TO SOUND CONCRETE, AND BELOW THE LEVEL OF CONCRETE OVERLAY / BASE CONCRETE INTERFACE. CONCRETE SURFACE TO BE THOROUGHLY CLEANED.
- PROTECT MATERIAL NOT DESIGNATED FOR REMOVAL, REPAIR AS NEEDED.
- CONCRETE SURFACE PREPARATION SHALL BE IN ACCORDANCE WITH SS211.12.
- CONSTRUCTION STAGES AND LOADS ARE THE RESPONSIBILITY OF THE CONTRACTOR. FOR TRAFFIC CLOSURE REQUIREMENTS DURING JOINT REPLACEMENT, PROVIDE MOUNTED COVER PLATES OVER JOINTS TO ALLOW FOR TRAFFIC IF REQUIRED.
- ALL STEEL SHALL BE GALVANIZED OR METALLIZED.
- FIELD WELDS TO DECK JOINT ARMORING WITHIN THE ROADWAY WIDTH SHALL NOT BE PERMITTED, EXCEPT AS SHOWN.
- FIELD WELDS AND AFFECTED ADJACENT STEEL PLATE IN GALVANIZED OR METALLIZED COMPONENTS SHALL BE GROUND SMOOTH TO NEAR-WHITE METAL FINISH AND COATED WITH THREE COATS OF ZINGA OR OTHER APPROVED ZINC-RICH PAINT.
- USE WABO SE-400 ELASTOMERIC STRIP SEAL OR PRE-APPROVED EQUAL AND INSTALL IN ACCORDANCE WITH MANUFACTURER'S INSTRUCTIONS.

THESE DRAWINGS RECORD ALL SIGNIFICANT DESIGN CHANGES AS PROVIDED TO ME BY THE MINISTRY REPRESENTATIVE AND THE DESIGN AS REPRESENTED BY THESE RECORD DRAWINGS SUBSTANTIALLY CONFORMS WITH THE DESIGN INTENT AND SOUND ENGINEERING PRACTICE.

Oct 16, 2020

ENGINEER OF RECORD DATE

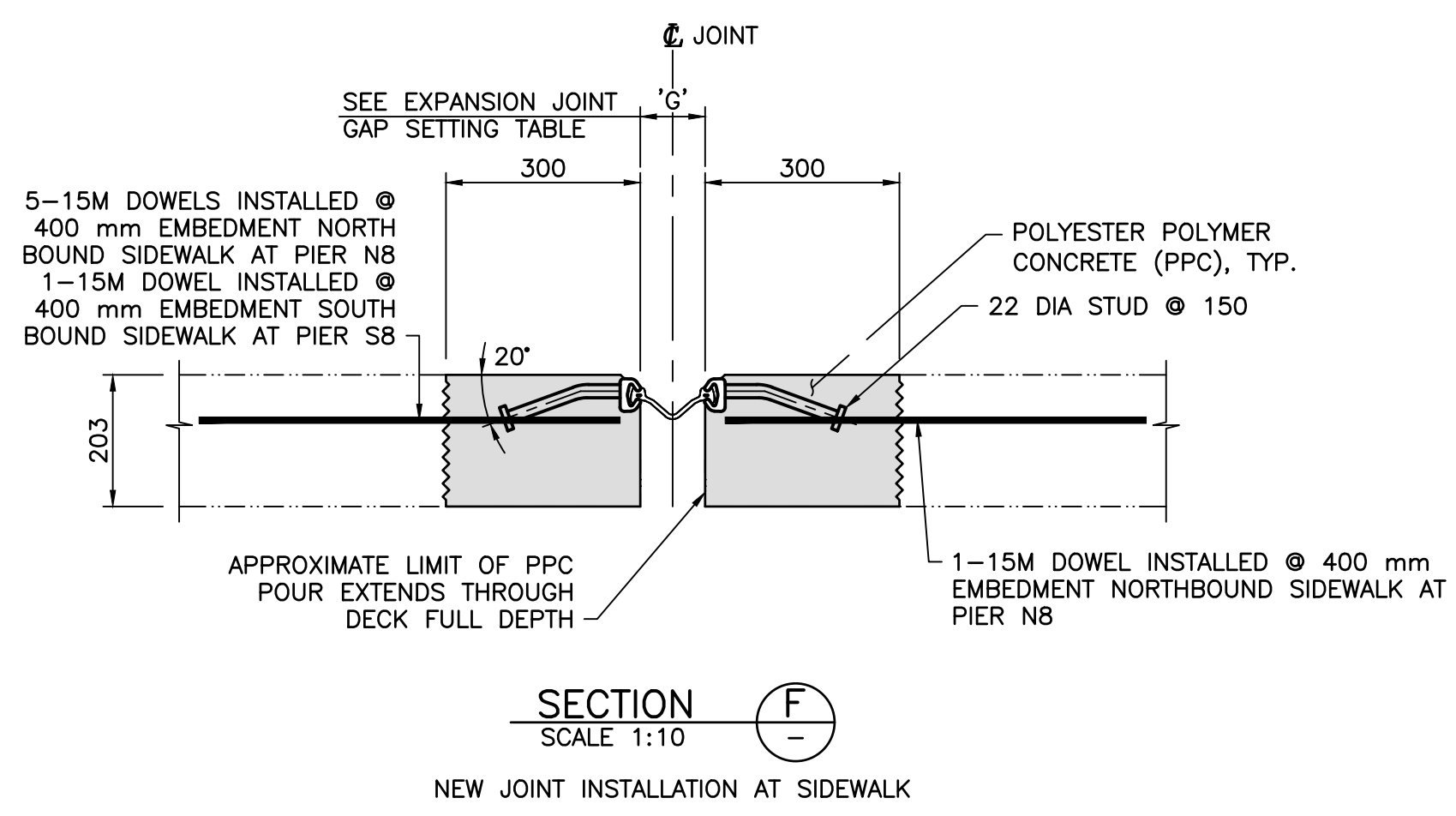
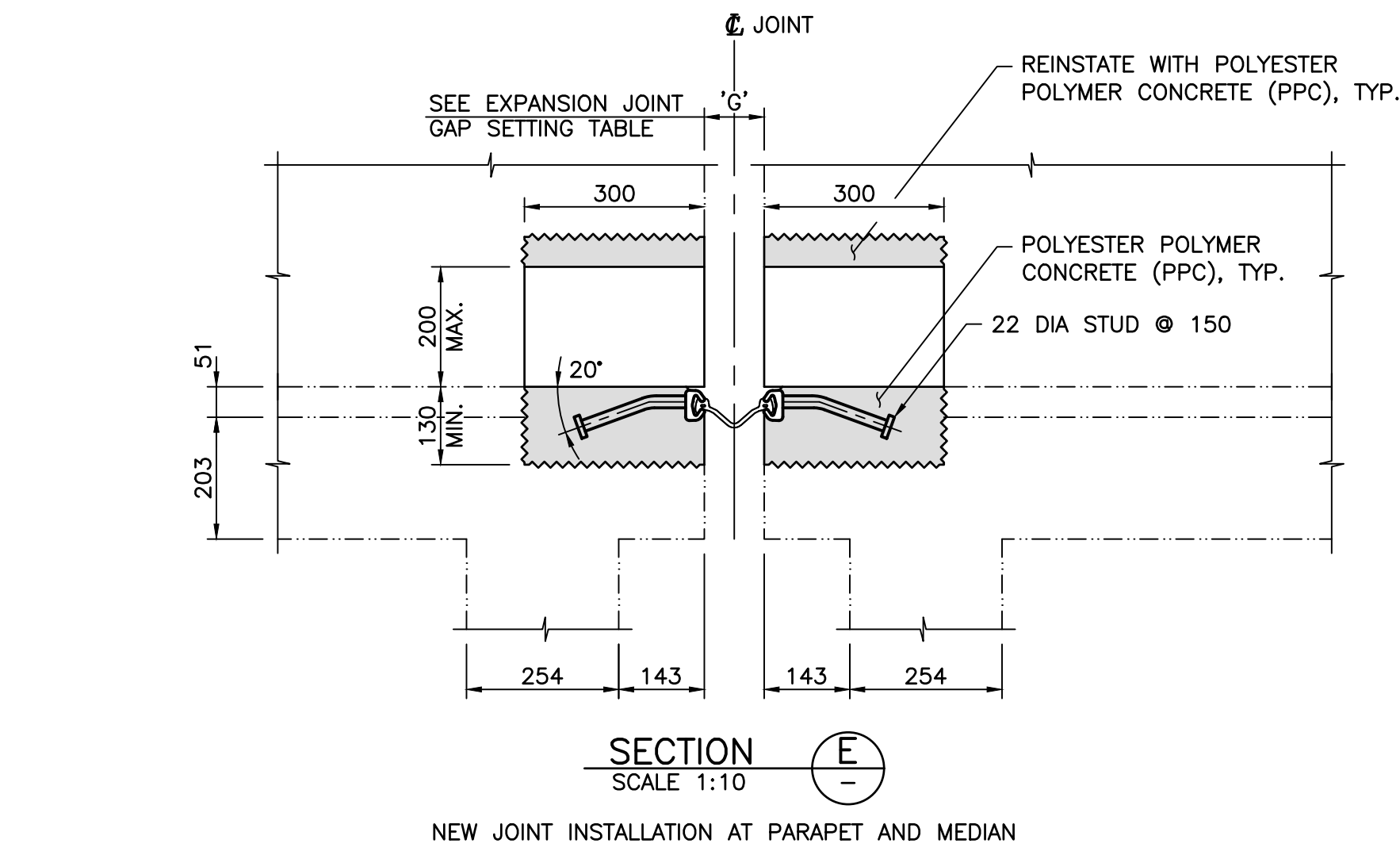
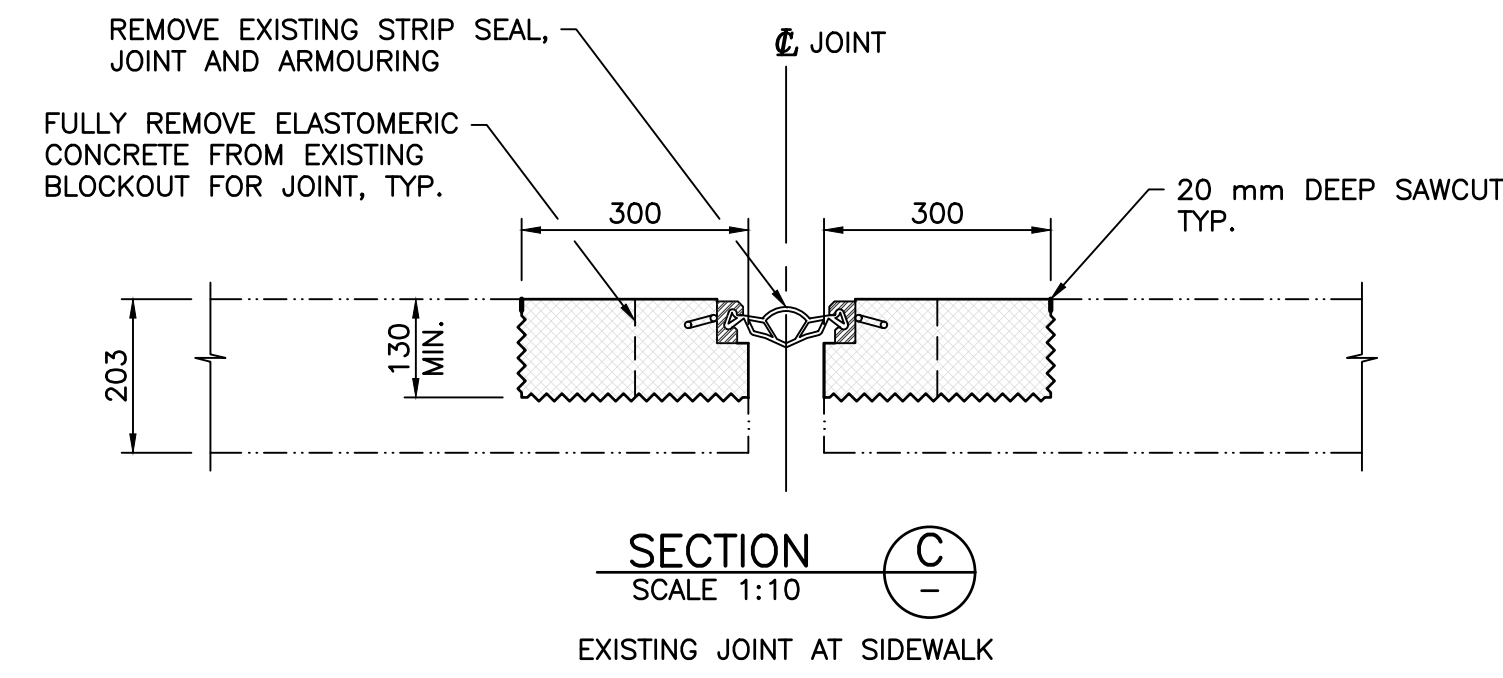
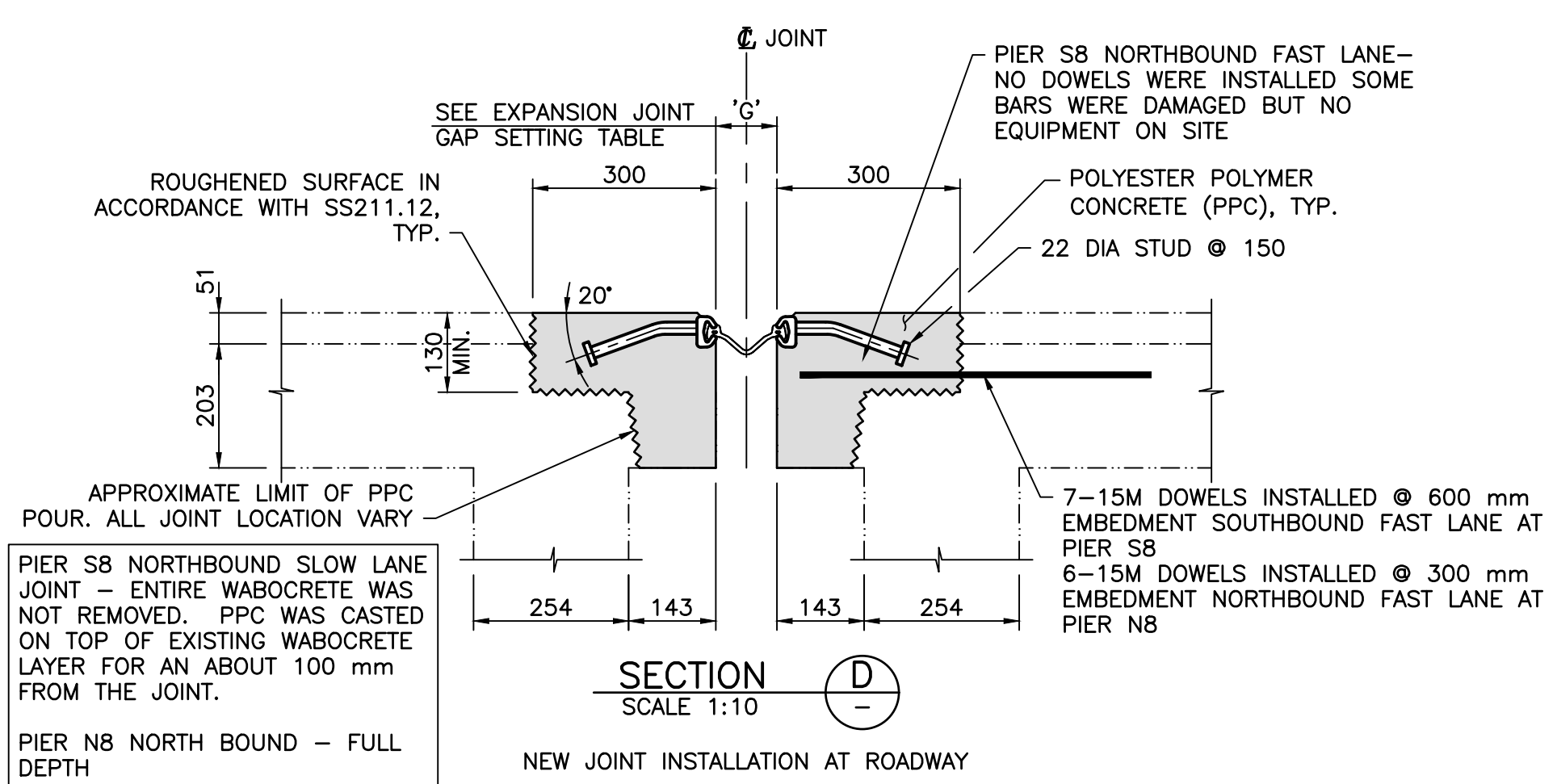
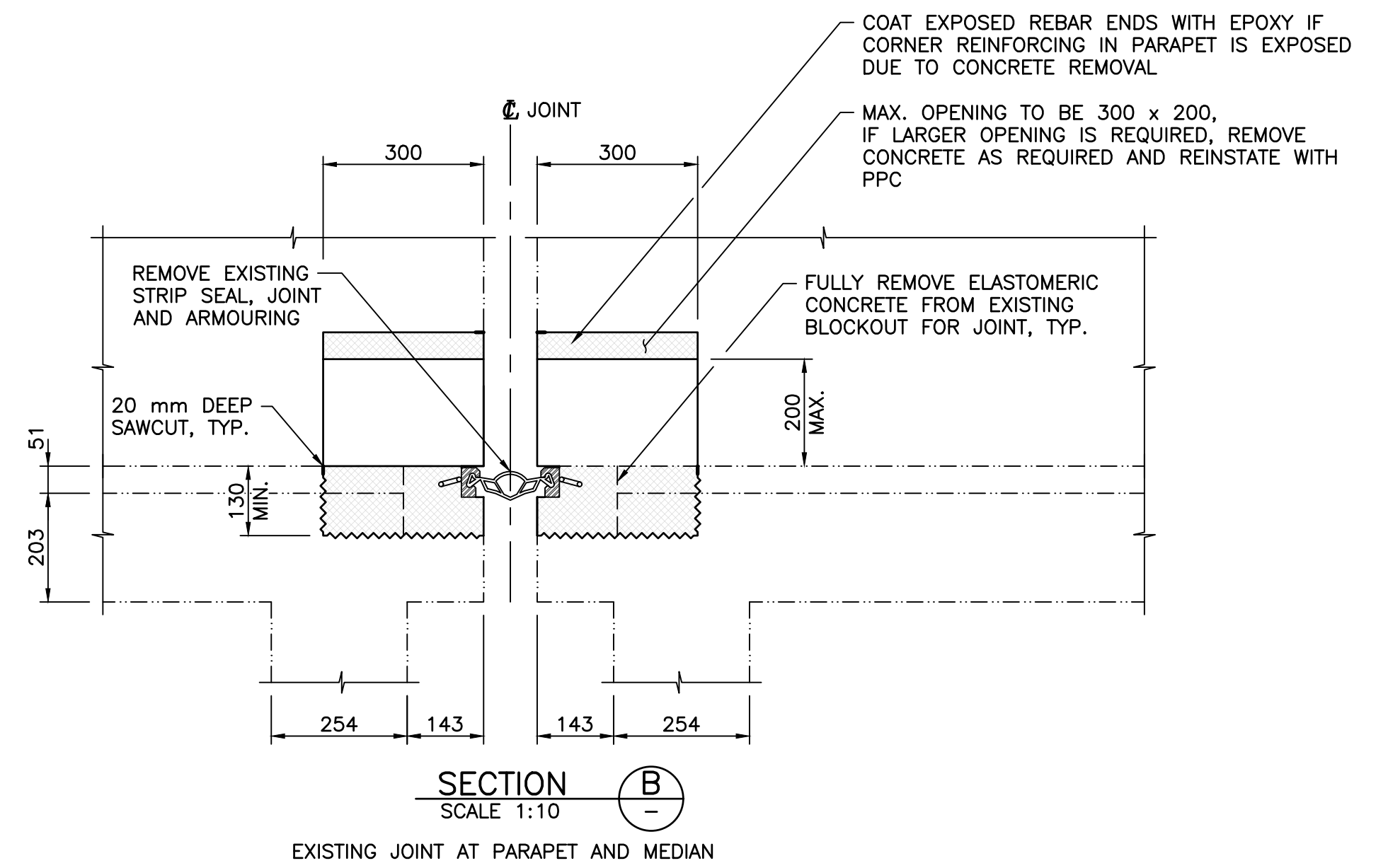
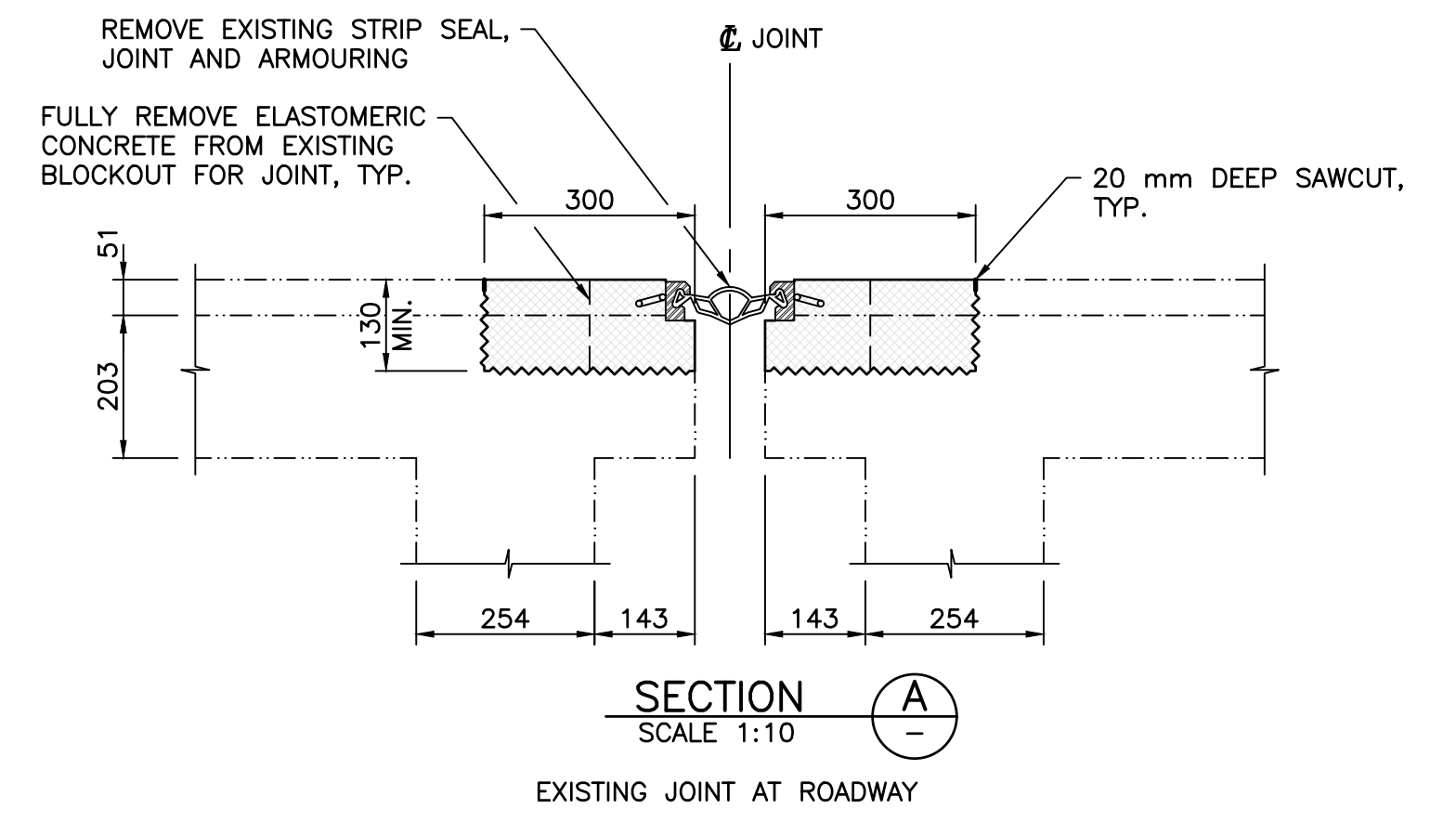
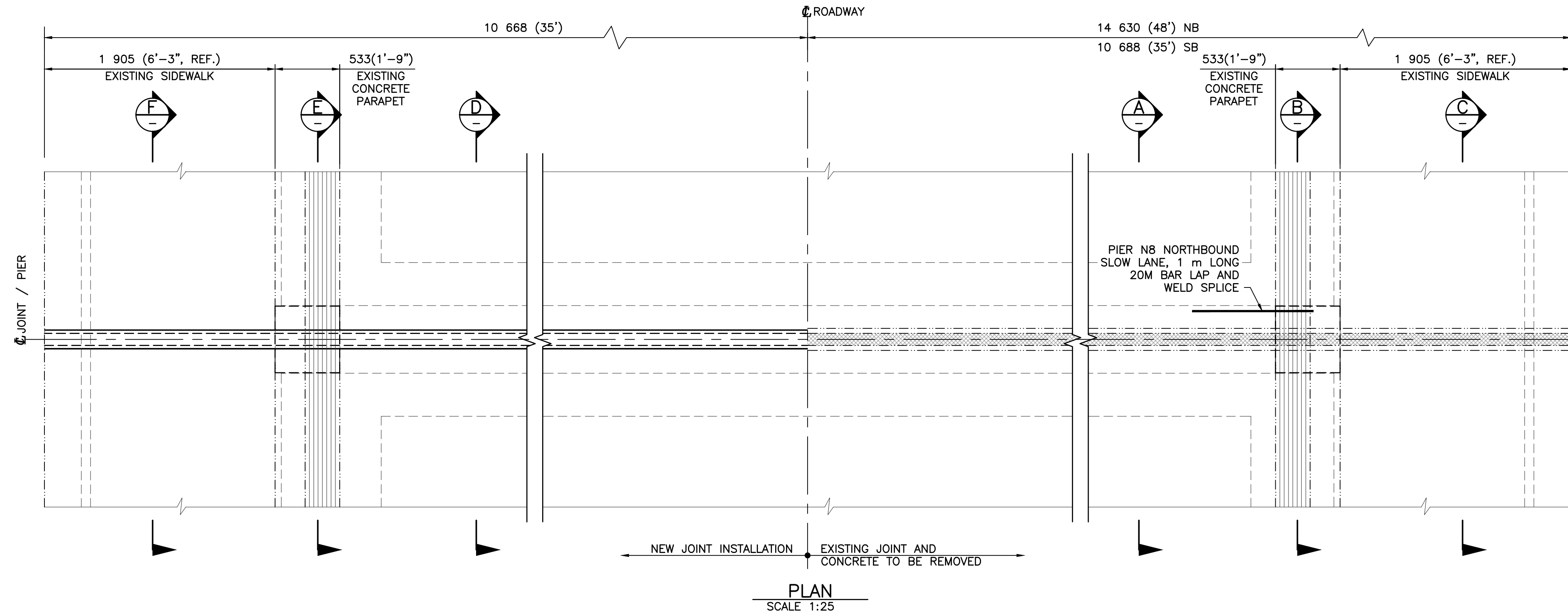
DRAWING LIST	
DWG. NO.	DRAWING TITLE
2317-201	PIER N5 AND S5
2317-202	PIER N8 AND S8

Rev	Date	Description	Init
B	2020-10-09	RECORD DRAWING	WL
A	2019-08-12	ISSUED FOR CONSTRUCTION	W.L.

BRITISH COLUMBIA Ministry of Transportation and Infrastructure South Coast Region

LOWER MAINLAND DISTRICT
HIGHWAY No. 11
**MISSION BRIDGE NO. 2317 - EXPANSION JOINT REPAIR
PIER N5 AND S5**

PREPARED UNDER THE DIRECTION OF WINNIE LI, P. ENG. ENGINEER OF RECORD DATE 2020-10-09	DESIGNED _____ W. LI DATE 2019-08-08 CHECKED _____ K. HABEL DATE 2019-08-08 DRAWN _____ N. LUCERO DATE 2019-08-08 SCALE AS SHOWN NEGATIVE No. REG. 1 DRAWING No. 2317-201
---	--



EXPANSION JOINT GAP SETTING						
TEMPERATURE C°	5	10	15	20	25	30
GAP SETTING 'G' *	76	70	63*	57	51	45

* CONFIRM GAP ON SITE

GIRDER PATCH (TOP OF GIRDER AND BELOW DECK SOFFIT)

- PIER S8 SOUTHBOUND SLOW LAND (2nd GIRDER FROM WEST) - PATCH OVER EXPOSED REBAR WITH PLANITOP
- PIER S8 NORTHBOUND FAST LANE (SOUTH GIRDER) - PATCH OVER EXPOSED REBAR WITH PLANITOP
- PIER N8 NORTHBOUND FAST LANE (SOUTHERN AND NORTHERN GIRDER CONCRETE SPALL) - PATCH OVER EXPOSED REBAR WITH PLANITOP
- PIER N8 SOUTHBOUND FAST LANE (NORTHERN GIRDER) - PATCH OVER EXPOSED REBAR WITH PLANITOP

THESE DRAWINGS RECORD ALL SIGNIFICANT DESIGN CHANGES AS PROVIDED TO ME BY THE MINISTRY REPRESENTATIVE AND THE DESIGN AS REPRESENTED BY THESE RECORD DRAWINGS SUBSTANTIALLY CONFORMS WITH THE DESIGN INTENT AND SOUND ENGINEERING PRACTICE.

Oct 16, 2020
DATE

ENGINEER OF RECORD

- NOTES:**
- FOR GENERAL NOTES, REFER TO DWG/ 2137-201.

Consultant Logo: **Associated Engineering** BEST MANAGED ORGANISATION

Rev	Date	Description	Init
B	2020-10-09	RECORD DRAWING	WL
A	2019-08-12	ISSUED FOR CONSTRUCTION	W.L.

REVISIONS

BRITISH COLUMBIA Ministry of Transportation and Infrastructure South Coast Region

LOWER MAINLAND DISTRICT
HIGHWAY No. 11
**MISSION BRIDGE NO. 2317 - EXPANSION JOINT REPAIR
PIER N8 AND S8**

PREPARED UNDER THE DIRECTION OF WINNIE LI, P. ENG. ENGINEER OF RECORD DATE 2020-10-09	DESIGNED <u>W. LI</u> DATE 2019-08-08 CHECKED <u>K. HABEL</u> DATE 2019-08-08 DRAWN <u>N. LUCERO</u> DATE 2019-08-08 SCALE AS SHOWN NEGATIVE No.
FILE No.	PROJECT No.
REG. 1	DRAWING No. 2317-202