

D1716-17

NO.	DATE	REVISIONS	BY	APPR.	EXISTING	LEGEND	PROPOSED
					S	Sewer - S, Water - W	---
					D	Drain - D, Curb - C	---
					G	Gas - G, u/g Hydro - H	---
					+	Hydrant	+
					O	Manhole	O
					X	Valve	X
					□	Catch basin	□

DESIGN: R.N.
 DRAWN: C.S.
 CHECKED:
 APPROVED:
 DATE: MARCH, 1972
 FIELD BOOK No.

DISTRICT OF MISSION
 RELOCATION OF STORM DRAIN (CONTRACT No.1)
 PLAN & PROFILE
 HORNE AVENUE

WILLIS CUNLIFFE TAIT
 & Company Ltd.

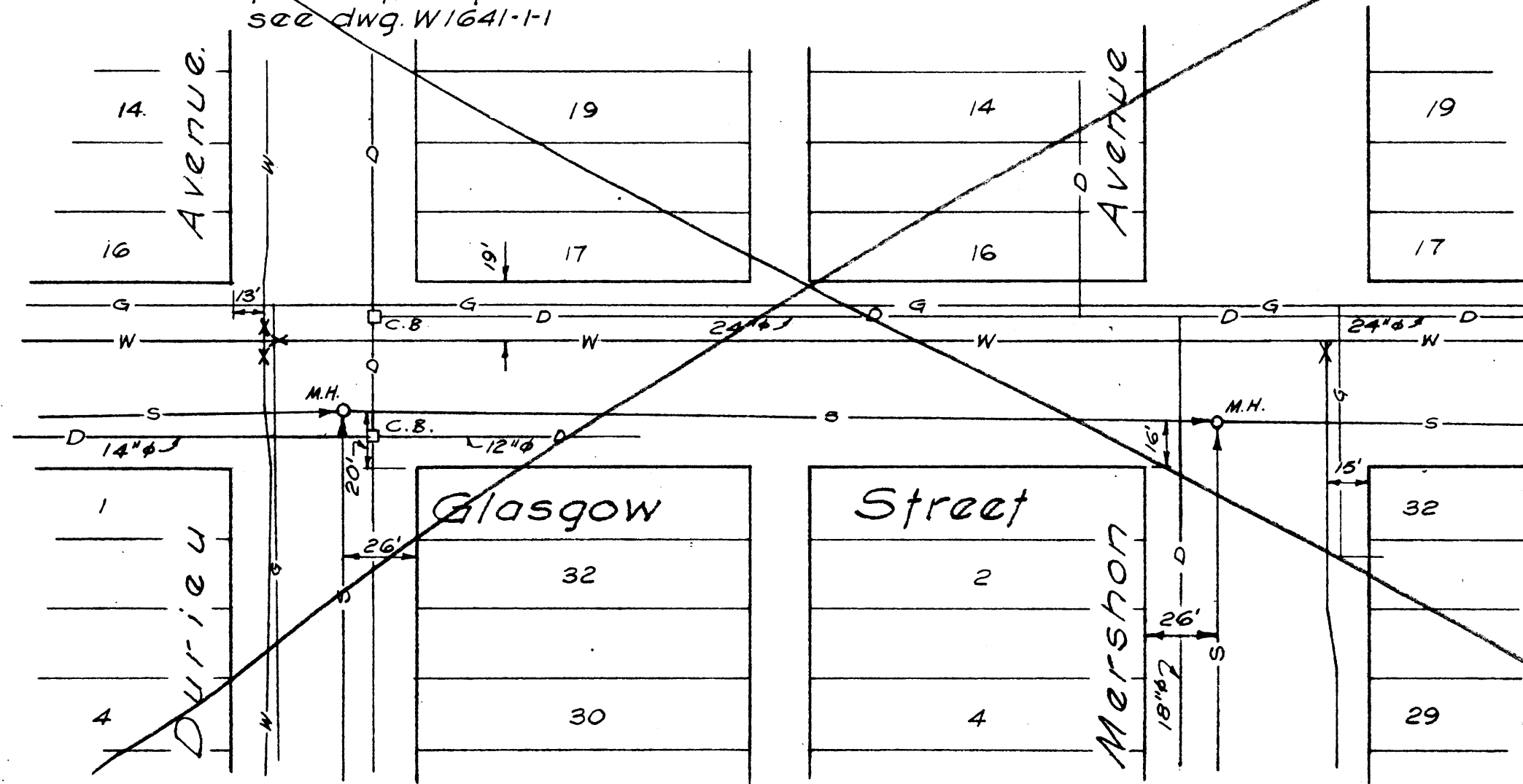
DRAWING No. W1641-1-4 REV. SHEET 4 OF 4

Old drawing no. D-4-4 R.O.M. DWG. No. D1716-17

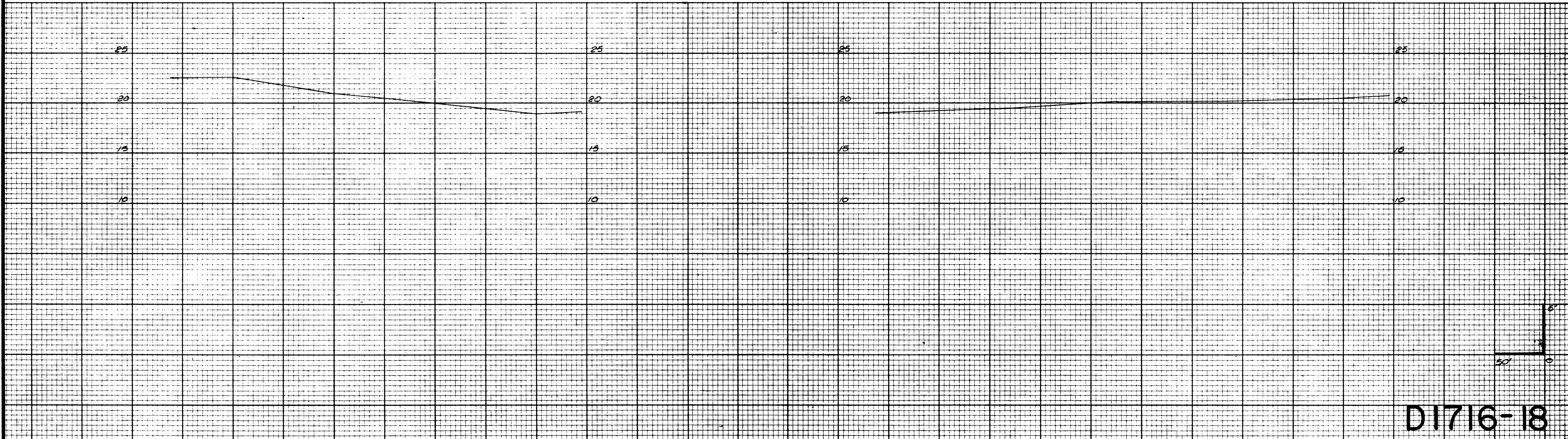
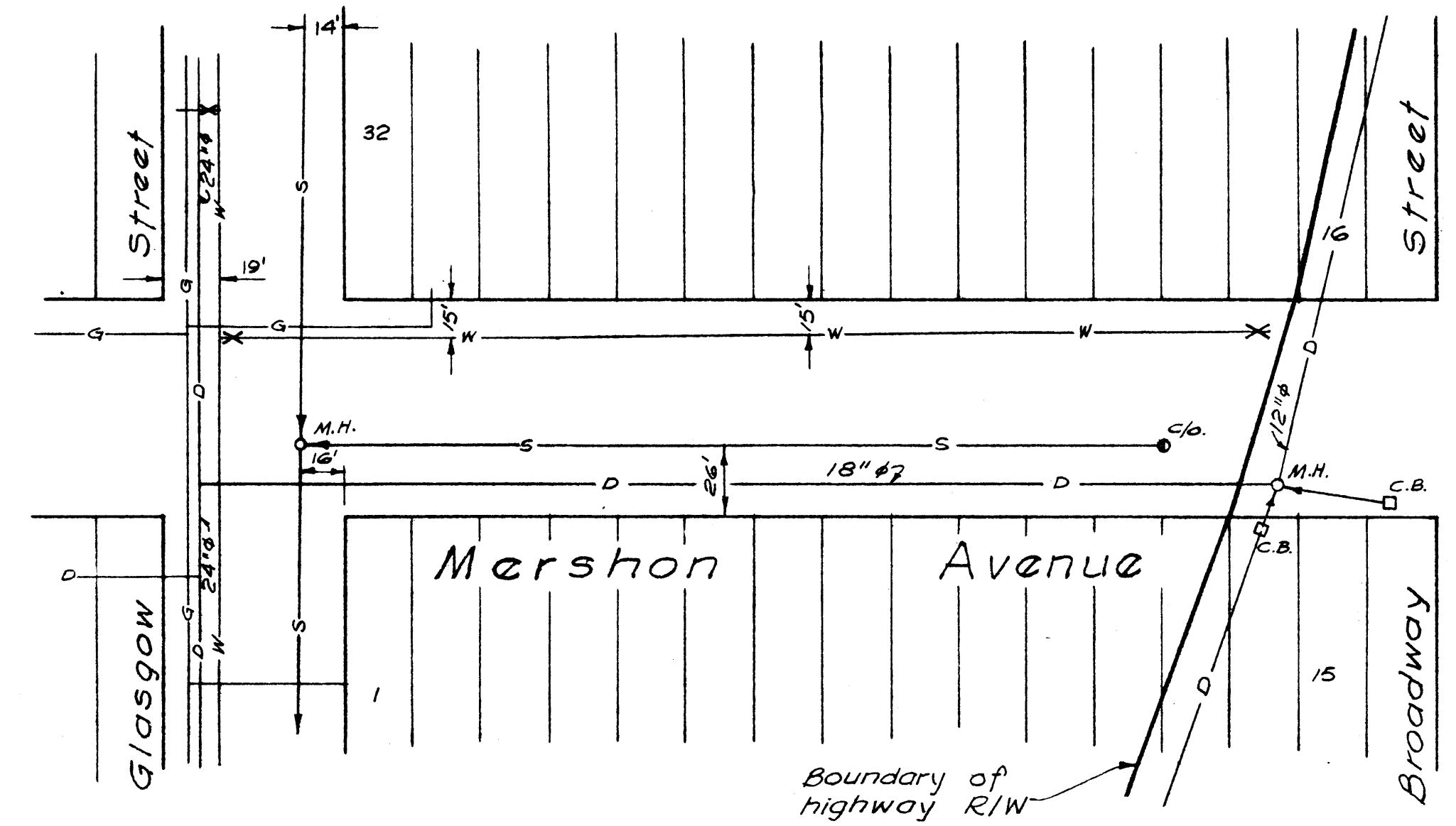
* OBSOLETE

For continuation
see dwg. W1641-1-1

SEE DWG D1716-67



For continuation
see dwg. W1641-1-2



D1716-18

NO.	DATE	REVISIONS	BY	APPR.

EXISTING	LEGEND	PROPOSED
—S—	Sewer—S, Water—W	—S—
—D—	Drain—D, Curb—C	—D—
—G—	Gas—G, w/g Hydro—H	—G—
X	Valve	X
o	Manhole	o
□	Catch Basin	□
o	Cleanout	o

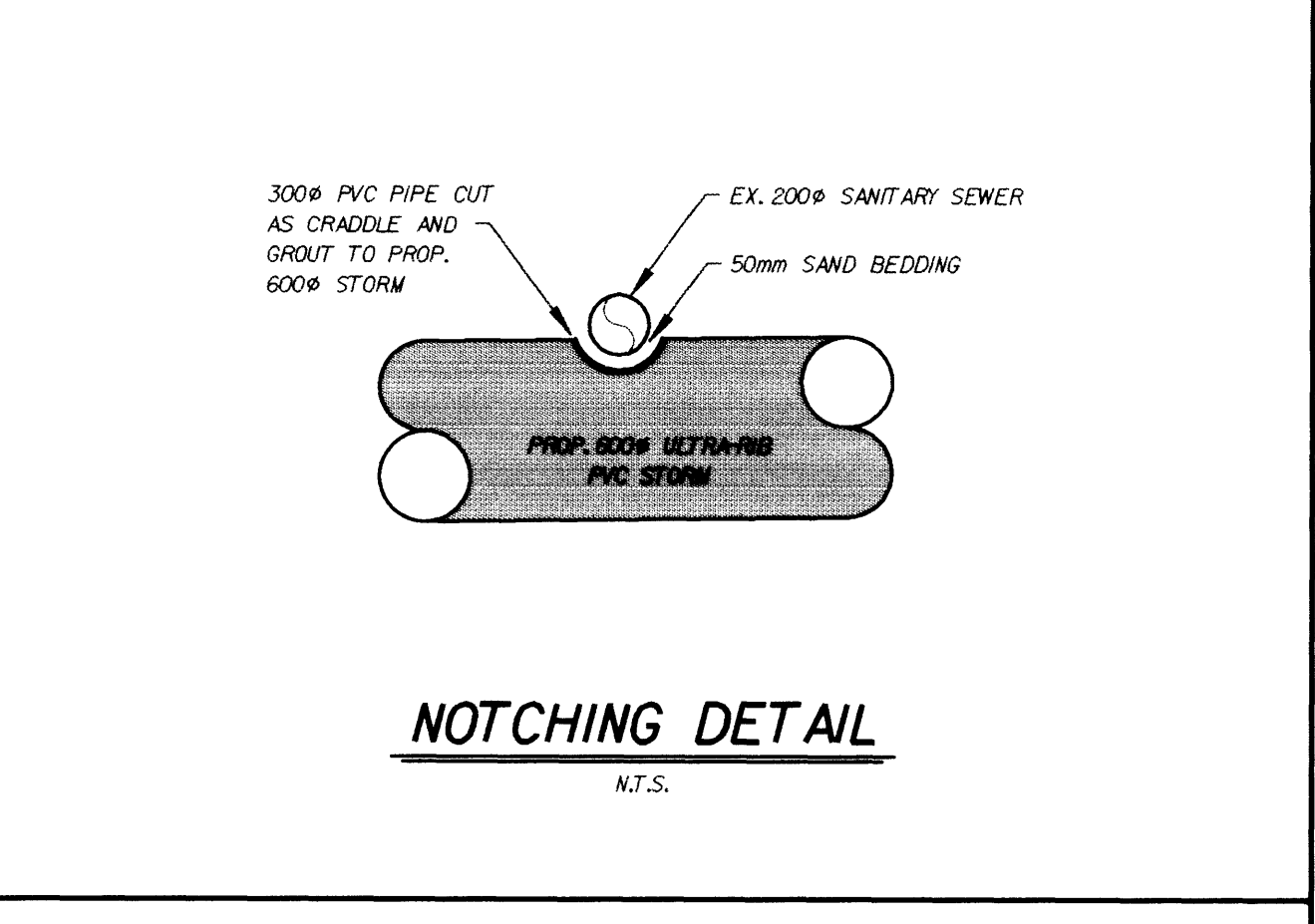
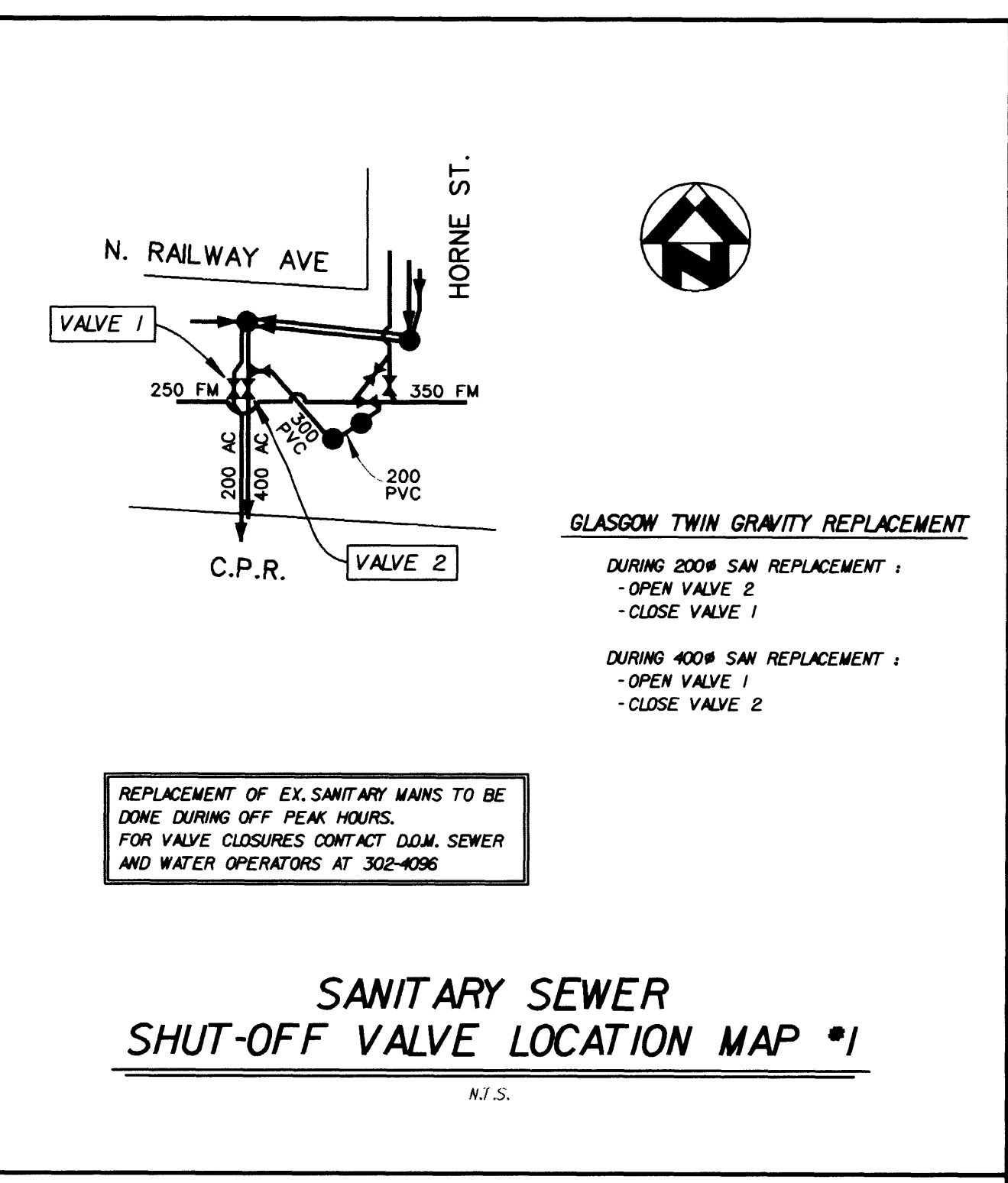
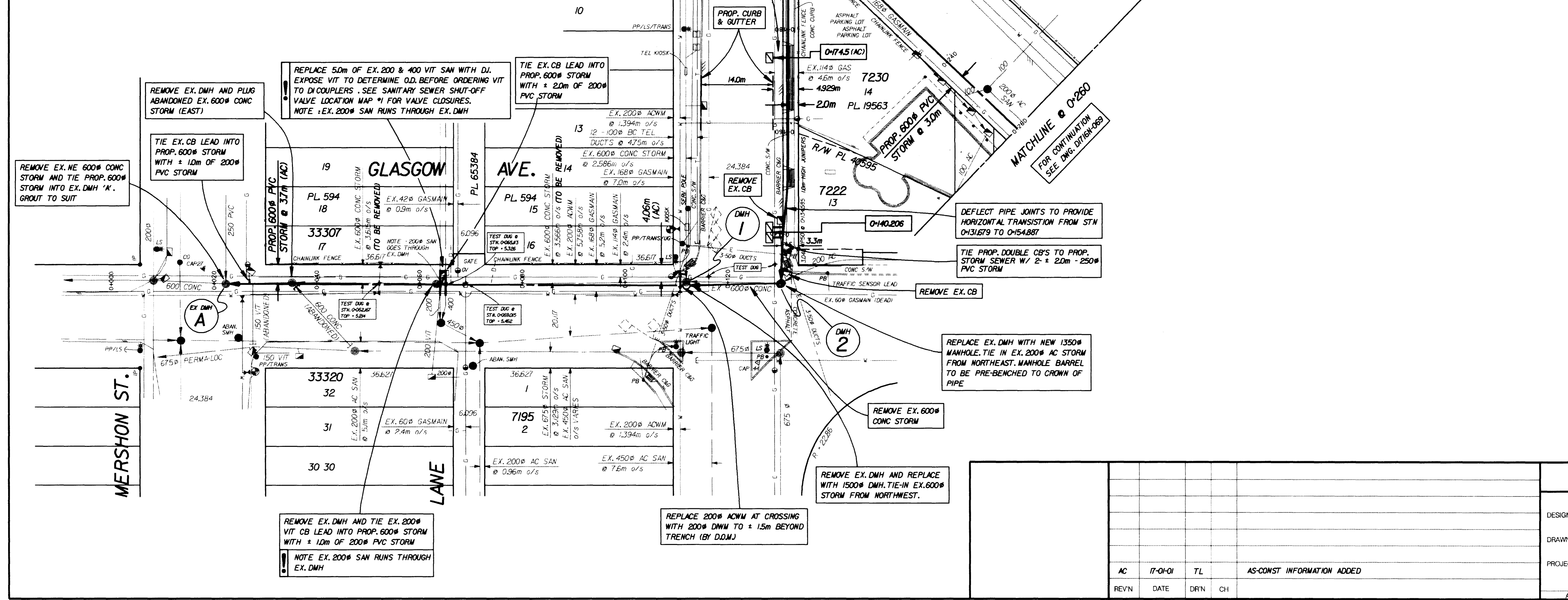
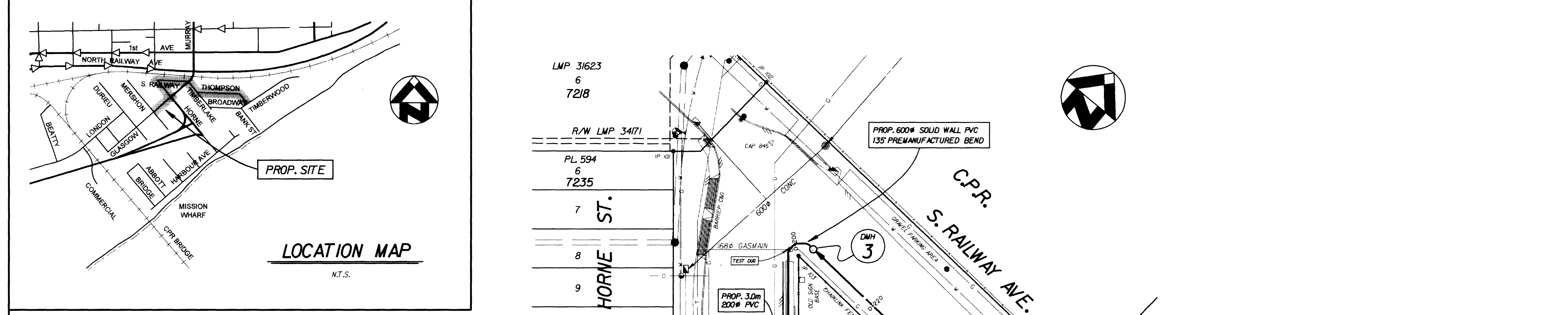
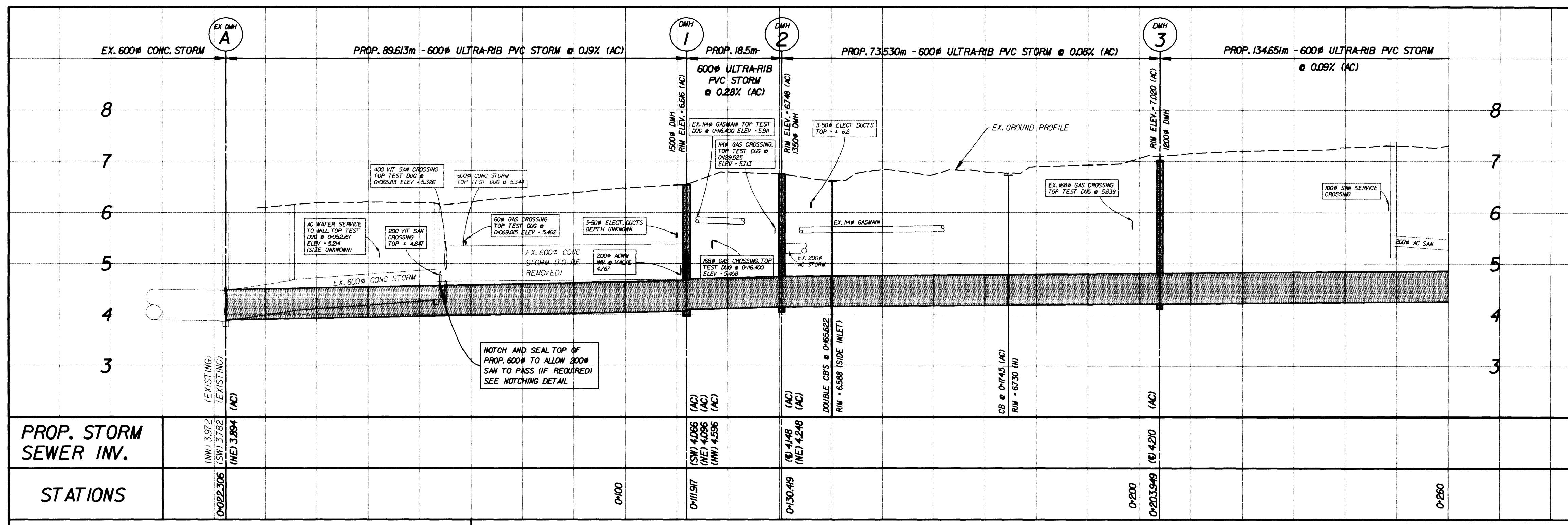
DESIGN: J.S.C.
DRAWN: C.S.
CHECKED:
APPROVED:
DATE: March, 1972
FIELD BOOK No.

DISTRICT OF MISSION
RELOCATION OF STORM DRAIN
PLAN & PROFILE
GLASGOW STREET & MERSHON AVENUE
DRAWING No. W1641-0-1 REV. SHEET OF

**WILLIS
CUNLIFFE
TAIT**
& Company Ltd.

old dwg. no. D-5

D.O.M. DWG. No. D1716-18



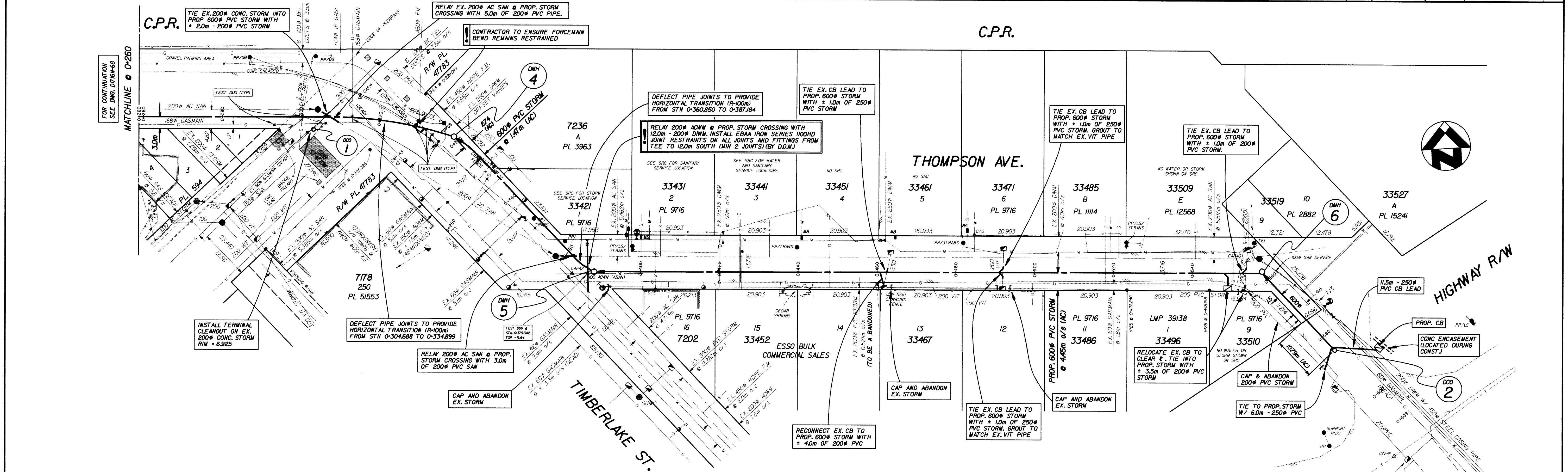
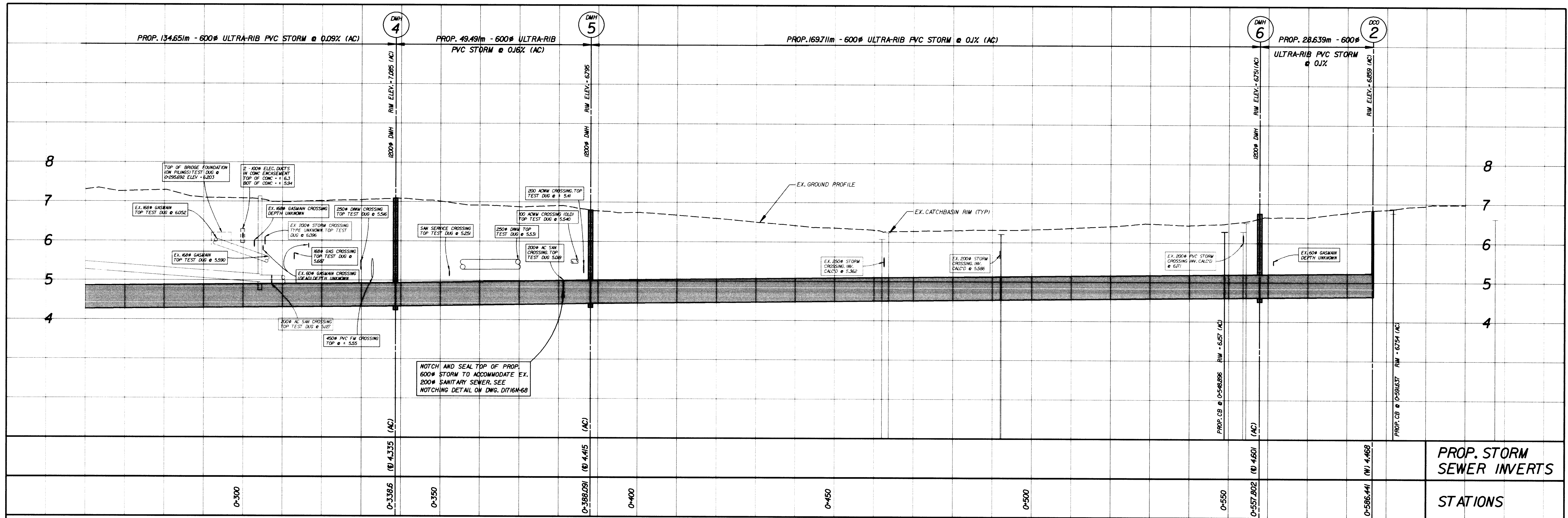
- ### GENERAL NOTES
- BENCHMARKS
 HYDRANT N7-3 @ SE CORNER OF GLASGOW AND MERSHON S. CAP NUT ELEV.-6754
 HYDRANT N7-4 @ NW CORNER OF GLASGOW AND HORNE N.E. CAP NUT ELEV.-7836
 HYDRANT N7-5 @ SE R OF 3342 THOMPSON TOP OPP NUT ELEV.-7720
 HYDRANT N7-6 @ NE CORNER OF THOMPSON AND BROADWAY TOP OPP NUT ELEV.-7595
 - ALL WORKS TO BE IN ACCORDANCE WITH DISTRICT OF MISSION STANDARD DRAWINGS
 - CONTRACTOR TO NOTIFY LOCAL RESIDENTS 72 HOURS PRIOR TO CONSTRUCTION
 - CONTRACTOR TO RECORD LOCATION OF ALL SERVICES AND UTILITIES ENCOUNTERED DURING CONSTRUCTION
 - CRITICAL DESIGN POINTS
 - ALL WORKS ON PRIVATE PROPERTY TO BE CARRIED OUT AS INDICATED ON DRAWINGS. ANY WORKS OR ENCROACHMENTS NOT SPECIFIED ON DRAWINGS ARE TO BE CONFIRMED WITH D.O.M. AND REQUIRE THE WRITTEN PERMISSION OF THE PROPERTY OWNER.
 - PROP. AND ADJUSTED MANHOLE & CLEANOUT RIMS TO BE SET FLUSH TO FINISHED GRADE
 - PROP. AND ADJUSTED CATCHBASIN RIMS TO BE SET 25mm BELOW FINISHED GRADE
 - PIPE JOINT DEFLECTION NOT TO EXCEED 1/2 MAX SPECIFIED BY MANUFACTURER
 - ALL BOULEVARD GRADINGS TO BE TOPSOIL AND SEEDING AND SLOPED AT MIN 2% MAX 4%W TO MEET EXISTING UNLESS NOTED.
 - DISTRICT OF MISSION CONTRACTS:
 DESIGN - ROB COOKE 820-3736
 CONTRACTS & PROJECT MGMT - TONY MINIACI 820-3738
 PUBLIC WORKS - 820-3761
 - ALL DAMAGED AND REMOVED PROPERTY PINS TO BE REPLACED BY LEGAL SURVEY

DESIGN		FC
DRAWN		TL
PROJECT		9905
APPROVED		

DISTRICT OF MISSION

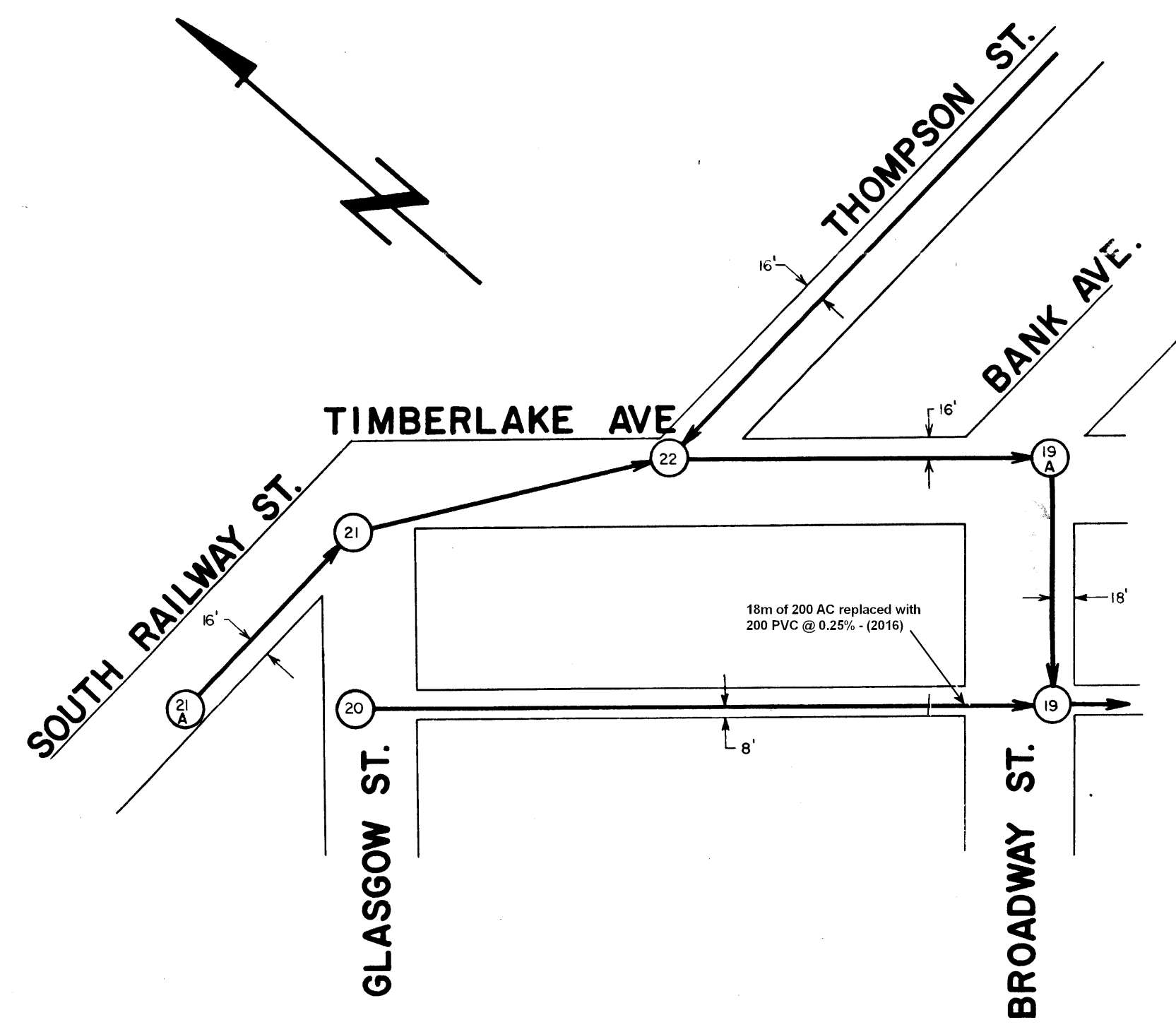
STORM SEWER - GLASGOW AVE. - MERSHON TO HORNE. & HORNE TO S. RAILWAY

SCALE	HORIZ - 1:500
	VERT - 1:50
DATE	18-03-99
DRAWINGS No.	DT/16N-68
SHEET No.	1 of 3 AC

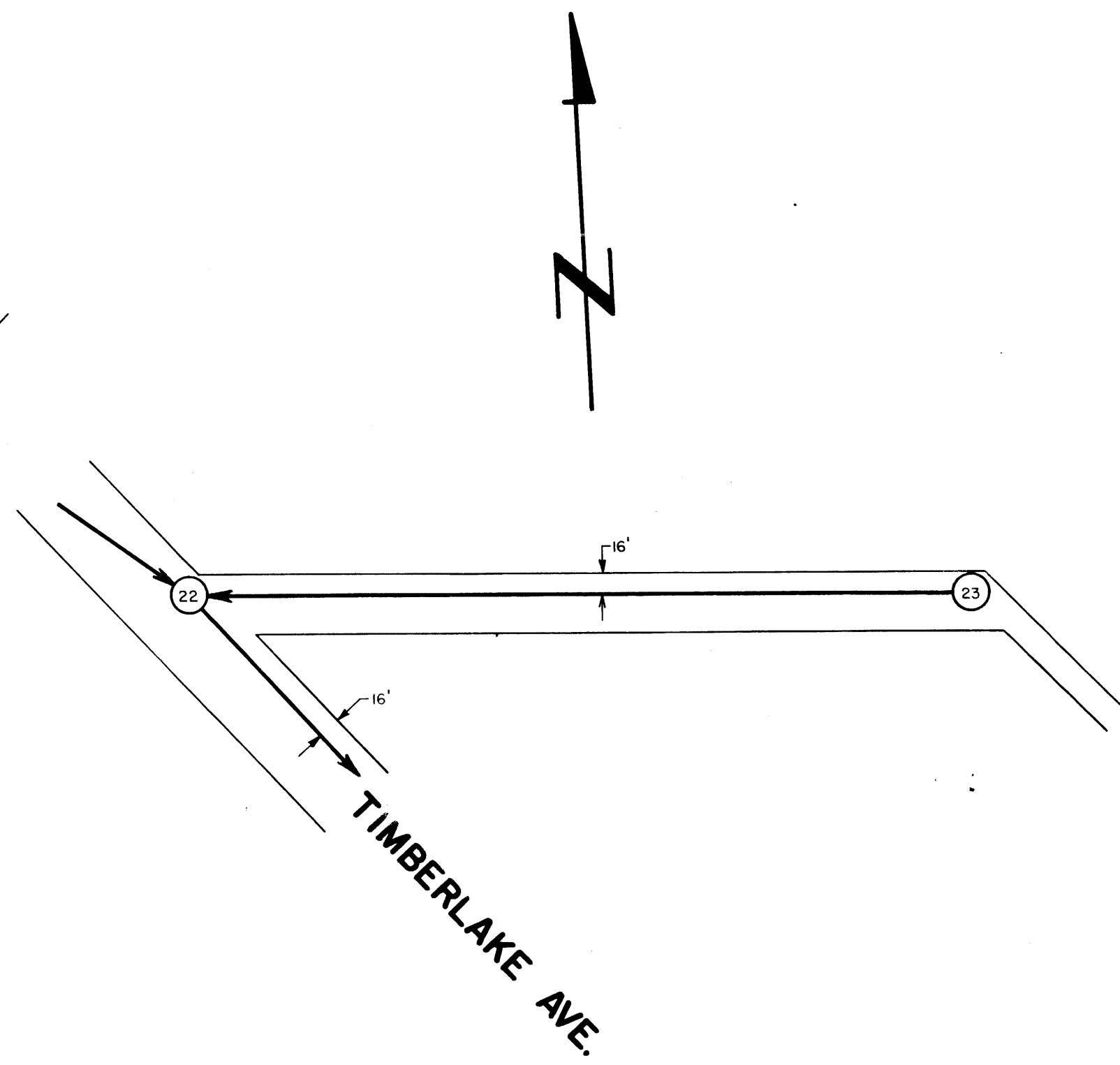


				DISTRICT OF MISSION			
				STORM SEWER - THOMPSON AVE. AND TIMBERLAKE ST. SOUTH OF SOUTH RAILWAY AVE.			
DESIGN	RC	SCALE		HORIZ.	1:500	DATE	22-03-99
DRAWN	TL	VERT.			1:150		D176M-69
PROJECT	9905	DRAWING NO.					07/16N-69
REVN	DATE	DRN	CH	SHEET NO.			2 of 3 AC
AC	23-01-01	TL		AS CONSTRUCTED INFO ADDED			
REVN							

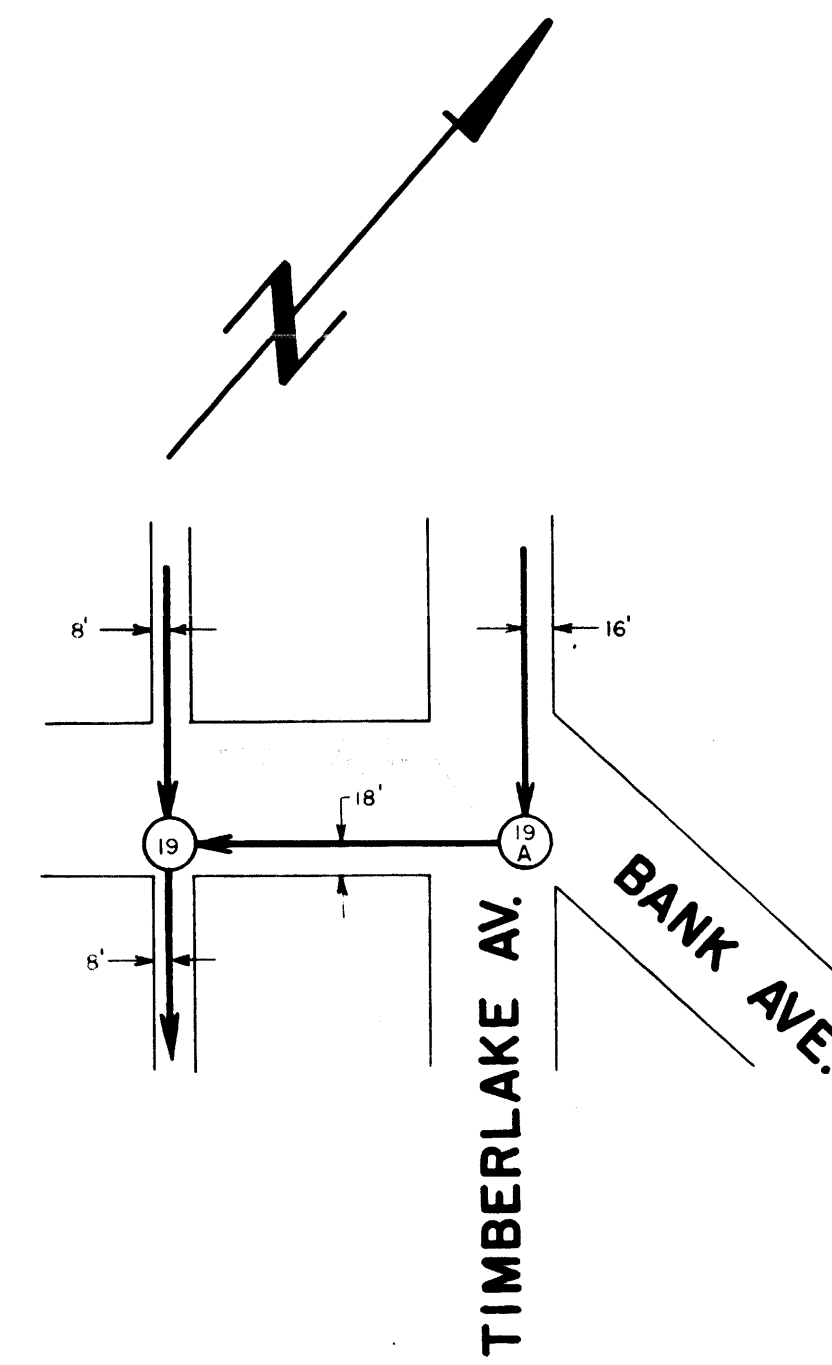
D176M-69



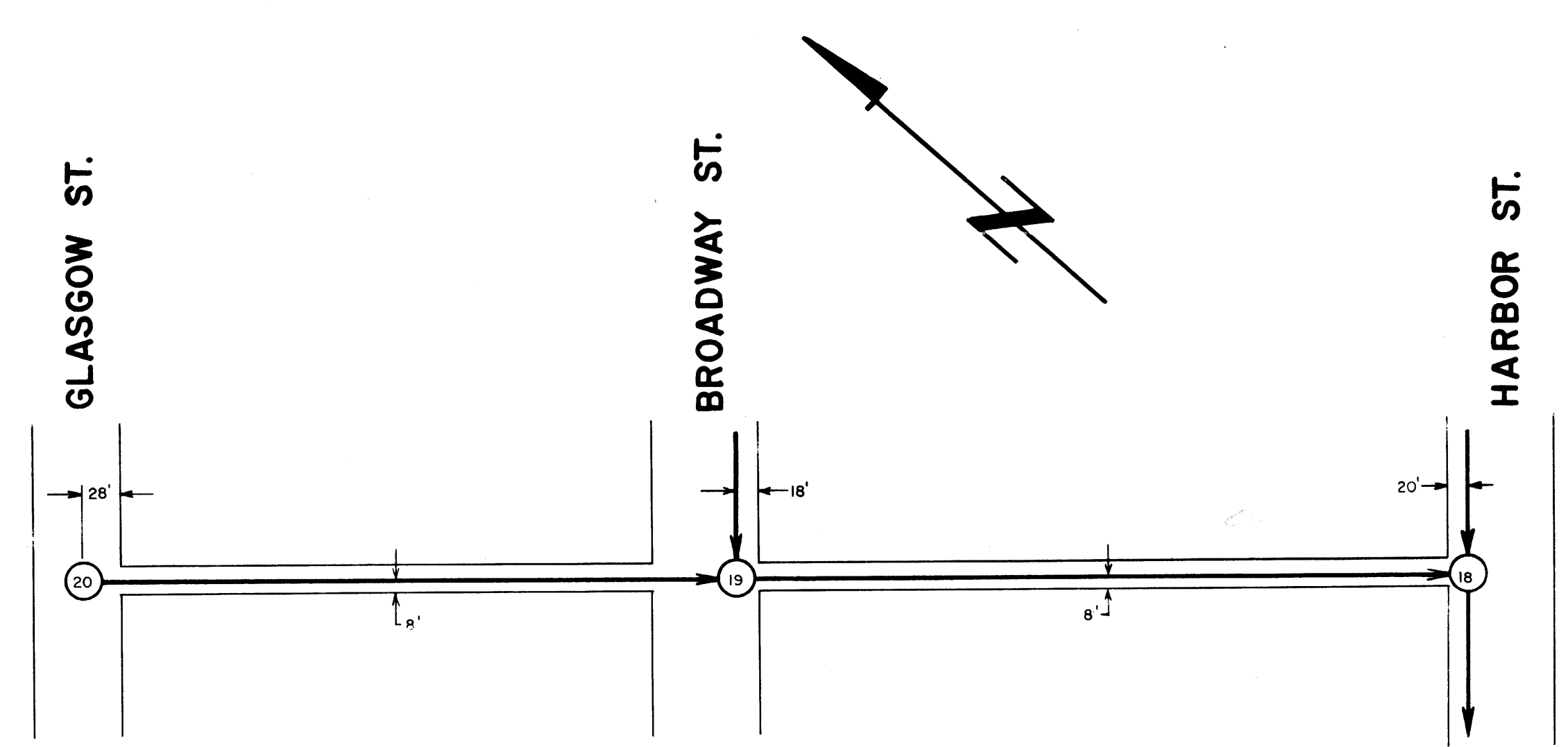
SOUTH RAILWAY ST. AND TIMBERLAKE AVE.



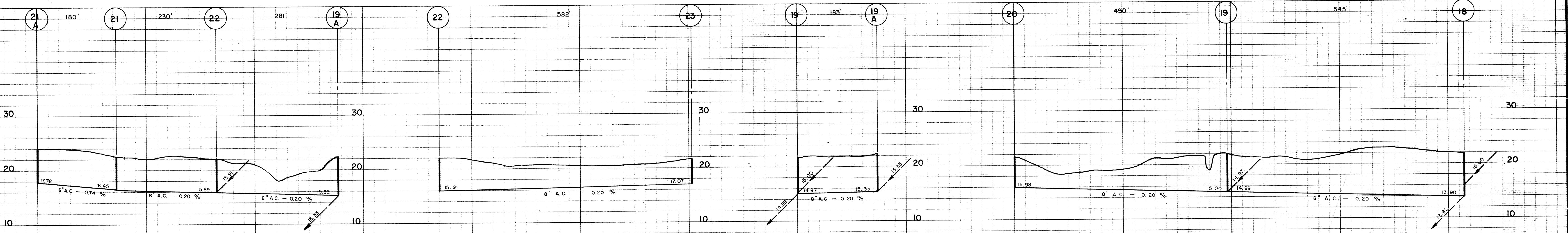
THOMPSON ST.



BROADWAY ST.



LANE BETWEEN TIMBERLAKE AVE. AND HORNE AVE.



NOTE: USE DRAWING ONLY IN CONJUNCTION WITH RELOCATION OF SERVICES DRAWING DATED OCT. '69

S1716-3

REVISIONS		DATE	BY	SUBJECT

ASSOCIATED ENGINEERING SERVICES LTD.
CONSULTING ENGINEERS VANCOUVER, B.C.

TOWN OF MISSION CITY B.C.

SANITARY SEWERS
AS CONSTRUCTED 1967-'68

DESIGNED: G.E.Mc	DRAWN: T.H.	TRACED:	CHECKED:
SCALE: 1"=100'	APPROVED BY:	JRS ND	GOI
DATE: 1/1/68	DWG. NO.:	S1716-3	

Old dwg # 56-32

SOUTH RAILWAY ST. & TIMBERLAKE AVE.
THOMPSON ST.
BROADWAY ST.
LANE between TIMBERLAKE AVE. & HORNE AVE

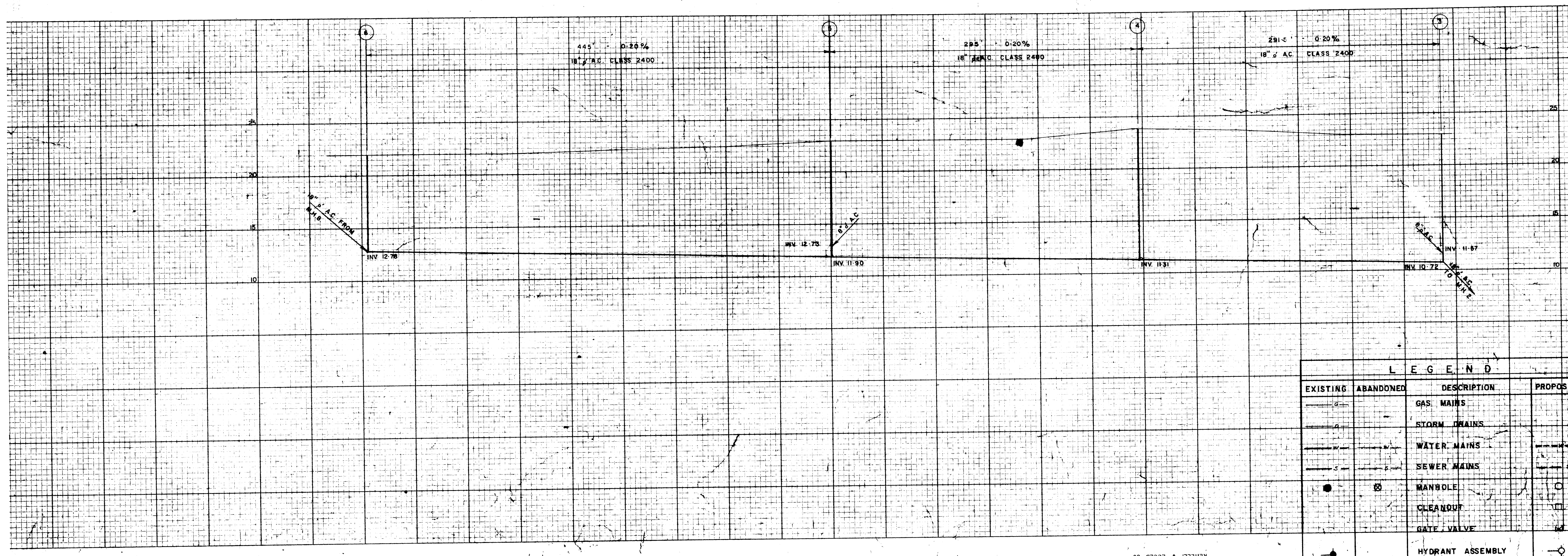
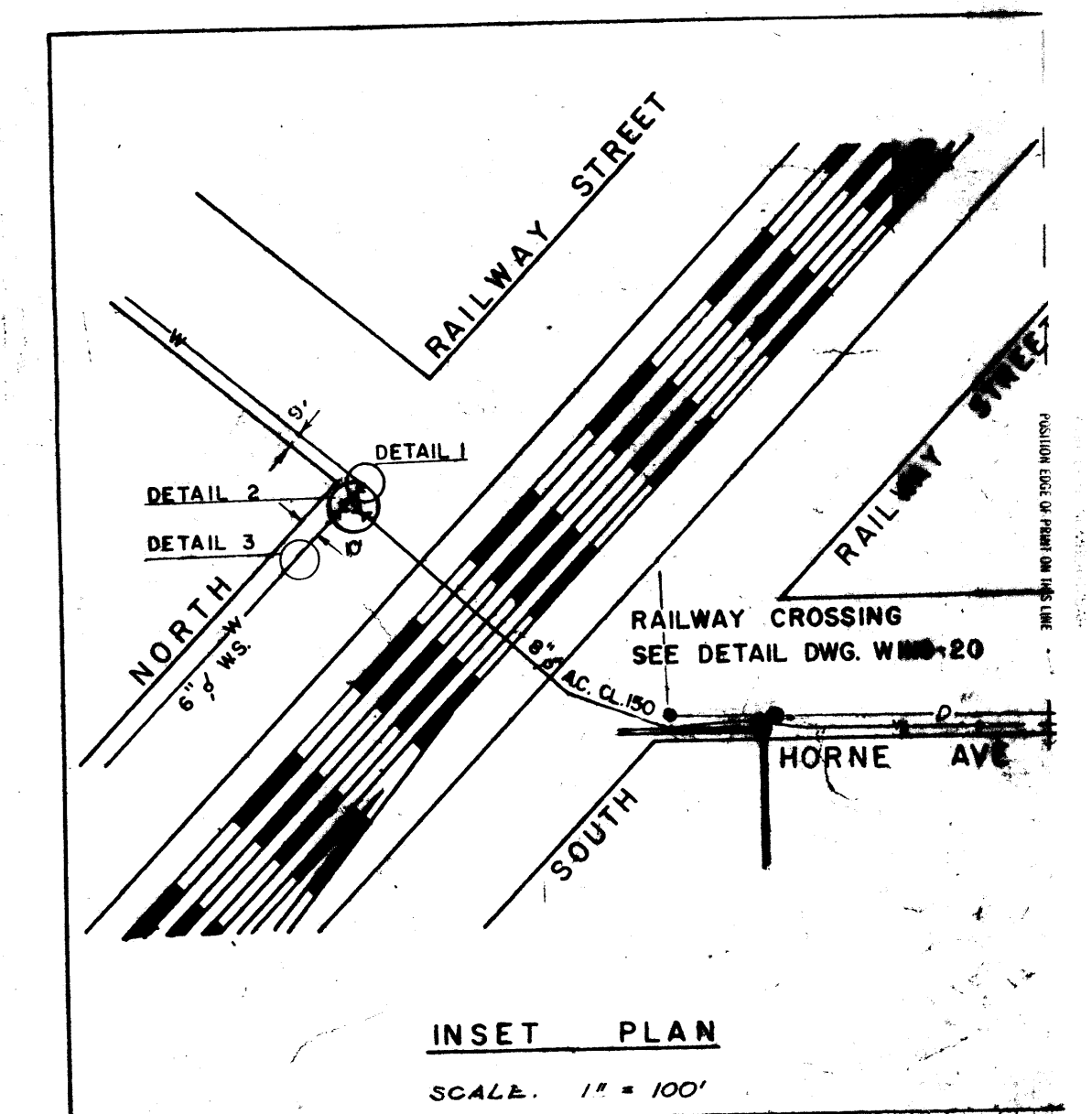
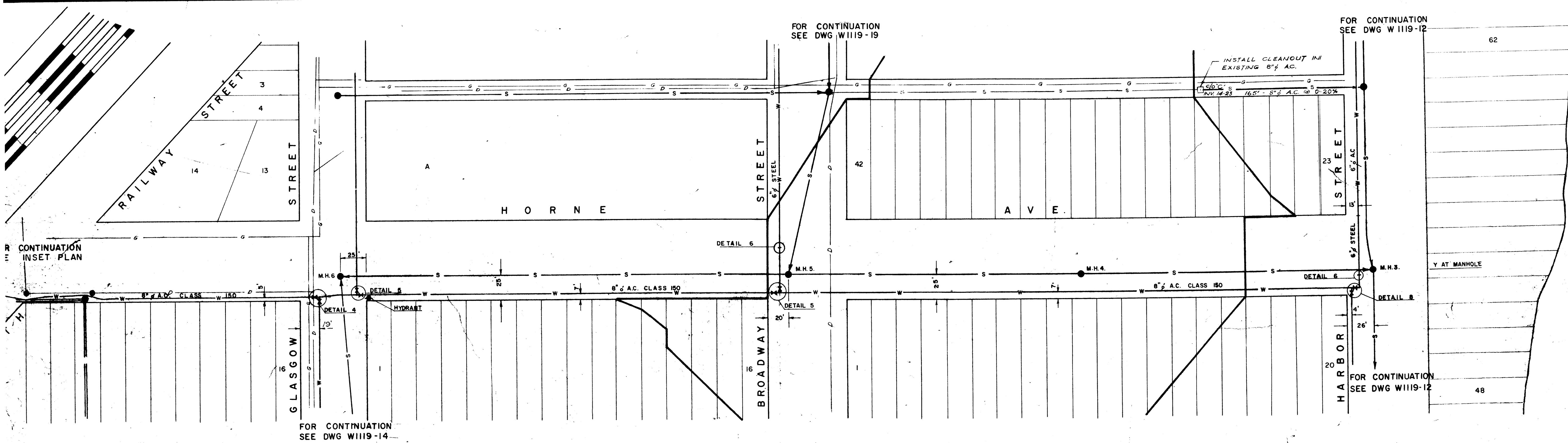
KERLEFF & ESSER CO.
NEW YORK

KERLEFF & ESSER CO.
NEW YORK

KERLEFF & ESSER CO.
NEW YORK

KERLEFF & ESSER CO.
NEW YORK

KERLEFF & ESSER CO.
NEW YORK



**S1716-11
AS CONSTRUCTED**

ISSUE NO.	DATE	REVISION	DESCRIPTION	BY
A	MAY 70	AS CONSTRUCTED		W.C.

CLIENT: THE CORPORATION OF THE TOWN OF MISSION CITY

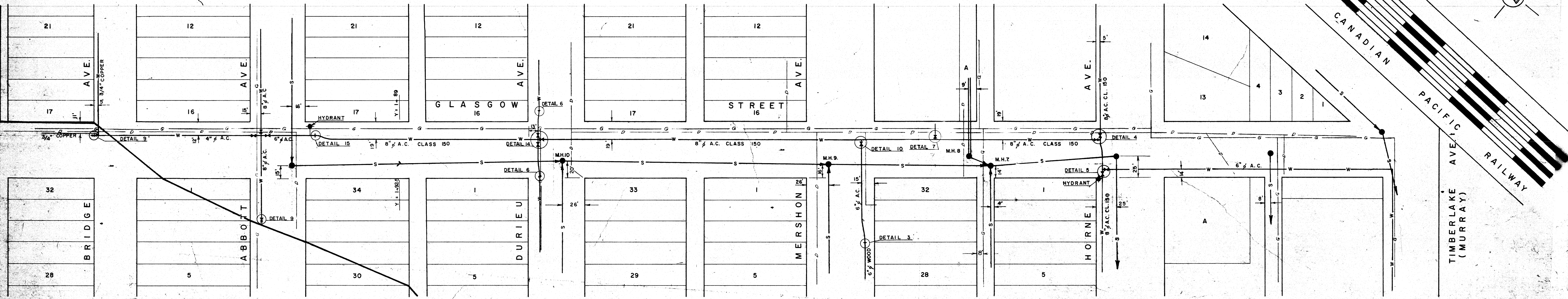
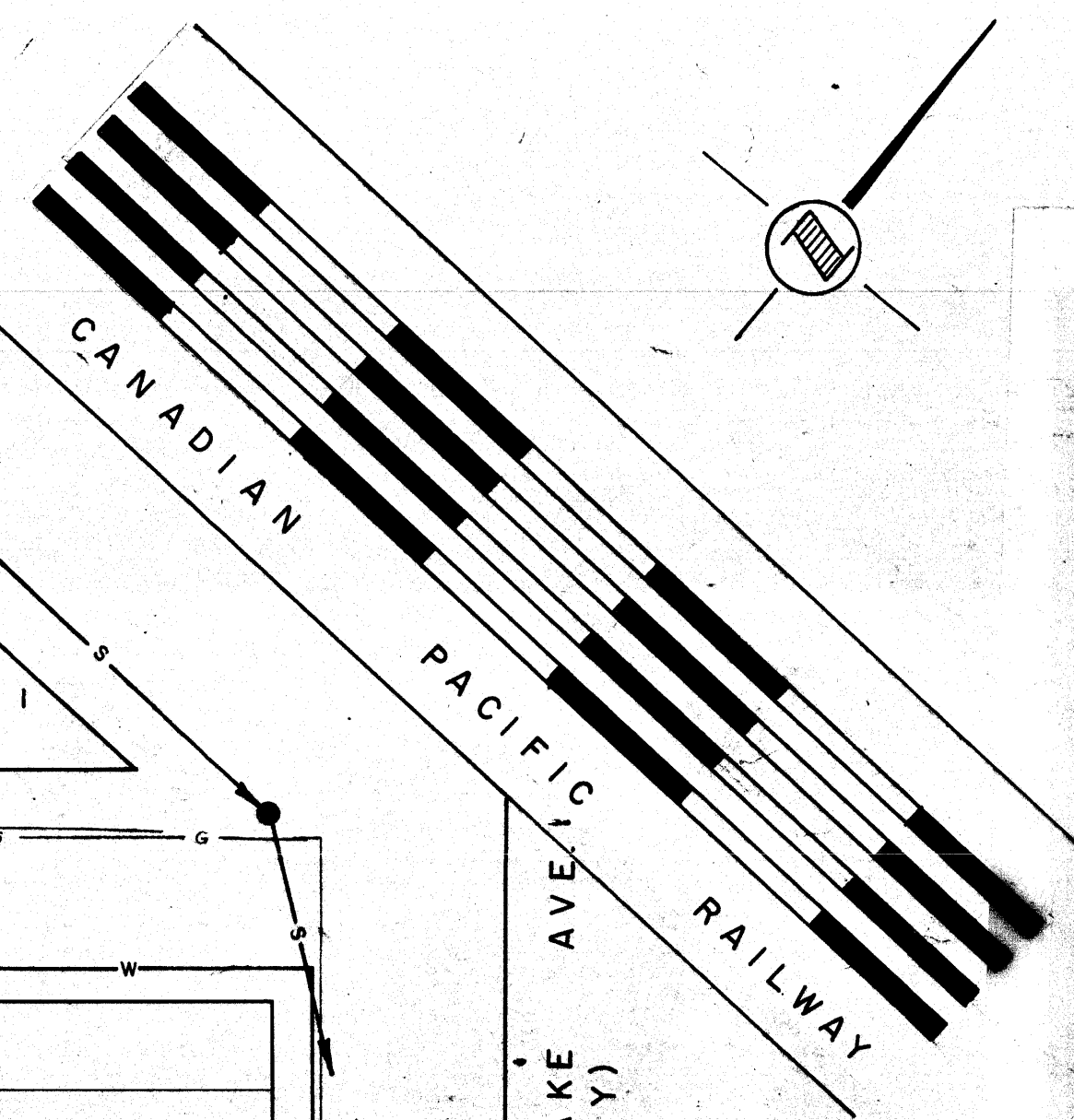
PROJECT: RELOCATION OF SERVICES

TITLE: **PLAN & PROFILE
HORNE AVENUE**

**WILLIS, CUNLIFFE, TAIT
& COMPANY LTD.**
CONSULTING ENGINEERS
VICTORIA, B.C.

DESIGN: E.F.W.M.	SCALE: HOR 1" = 50' VERT 1" = 5'
DRAWN: W.C.	DATE: OCT 1968
CHECKED: <i>[Signature]</i>	APPROVED: <i>[Signature]</i>

DRAWING NO. *S1716-11* REVISION A



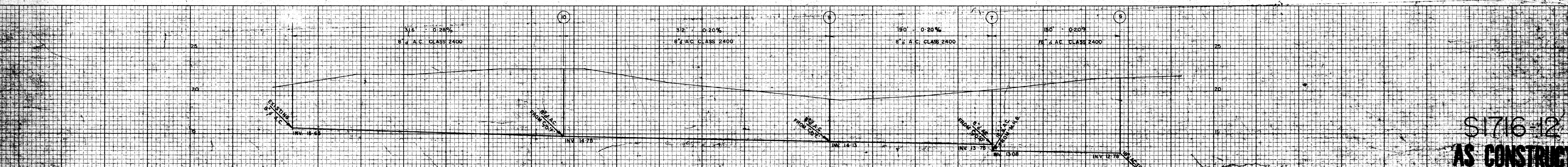
FOR CONTINUATION
SEE DWG W1119-17

FOR CONTINUATION
SEE DWG W1119-16

FOR CONTINUATION
SEE DWG W1119-15

FOR CONTINUATION
SEE DWG W1119-13

FOR CONTINUATION
SEE KEY PLAN DWG W1119-11



S1716-12
AS CONSTRUCTED

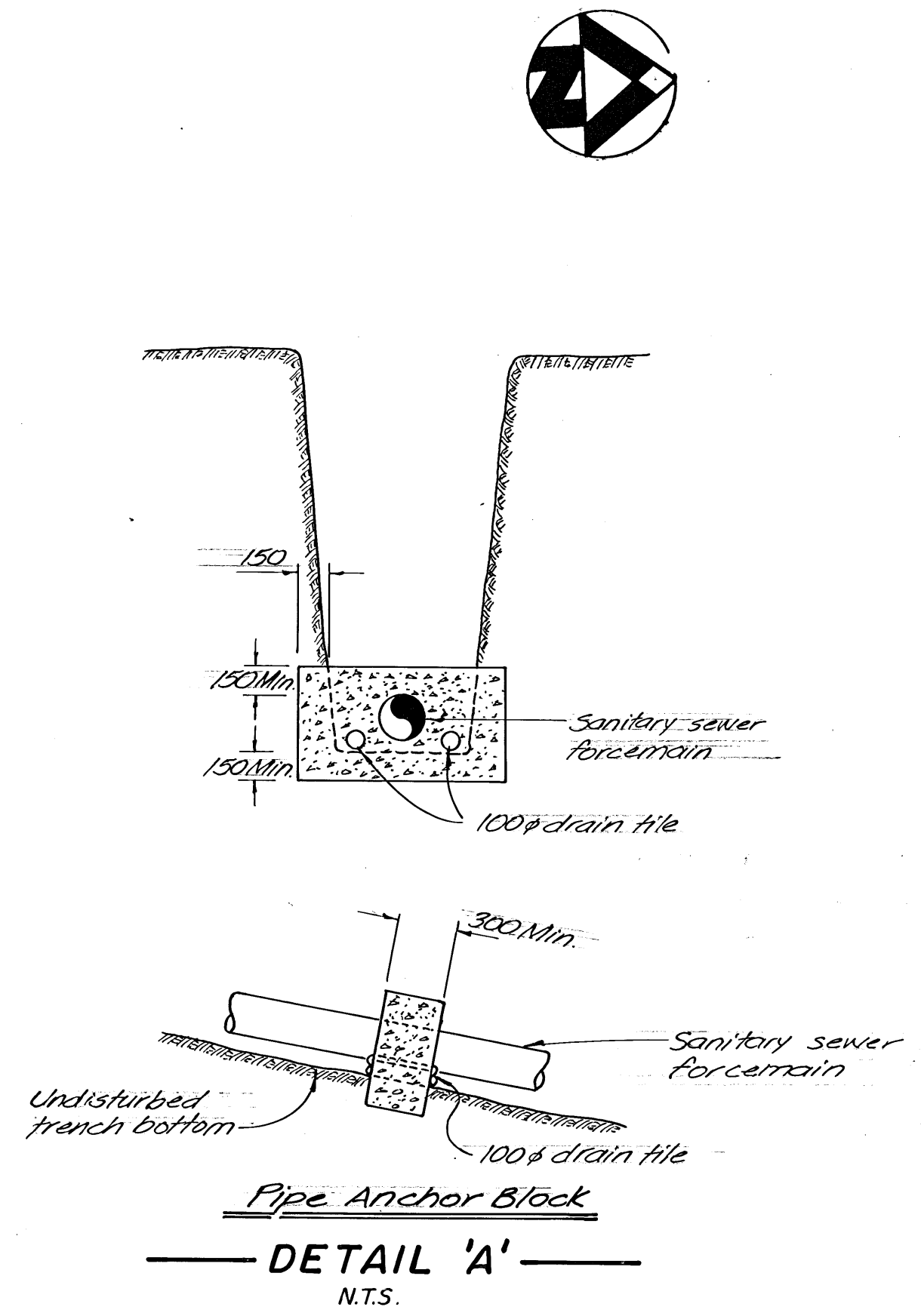
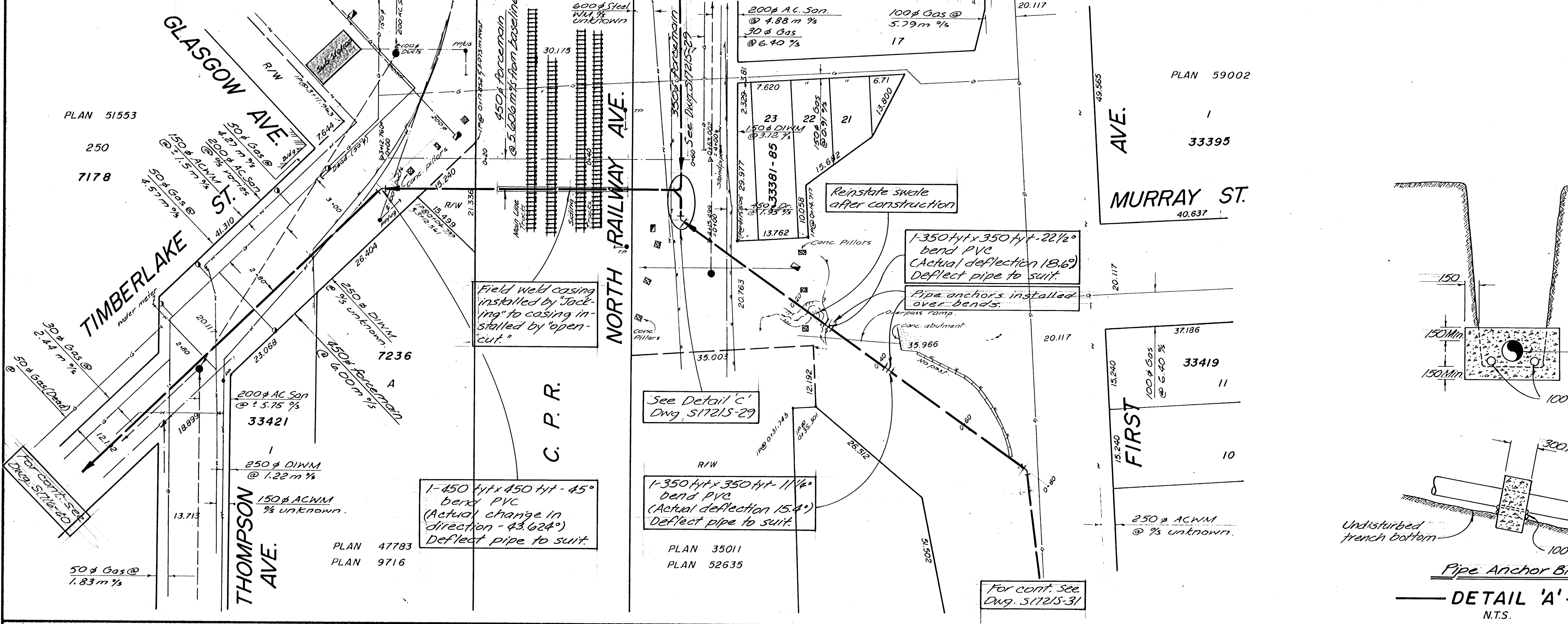
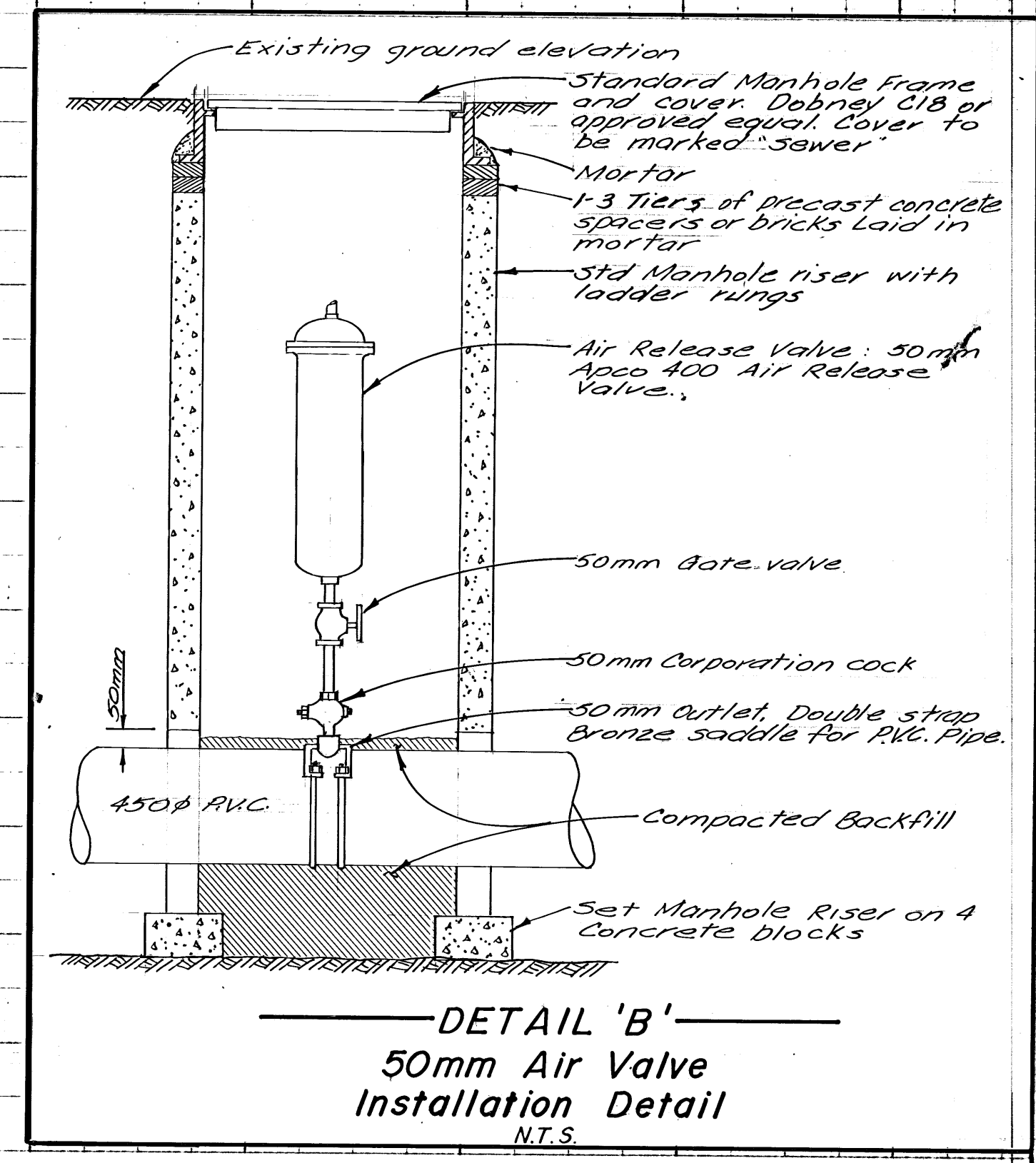
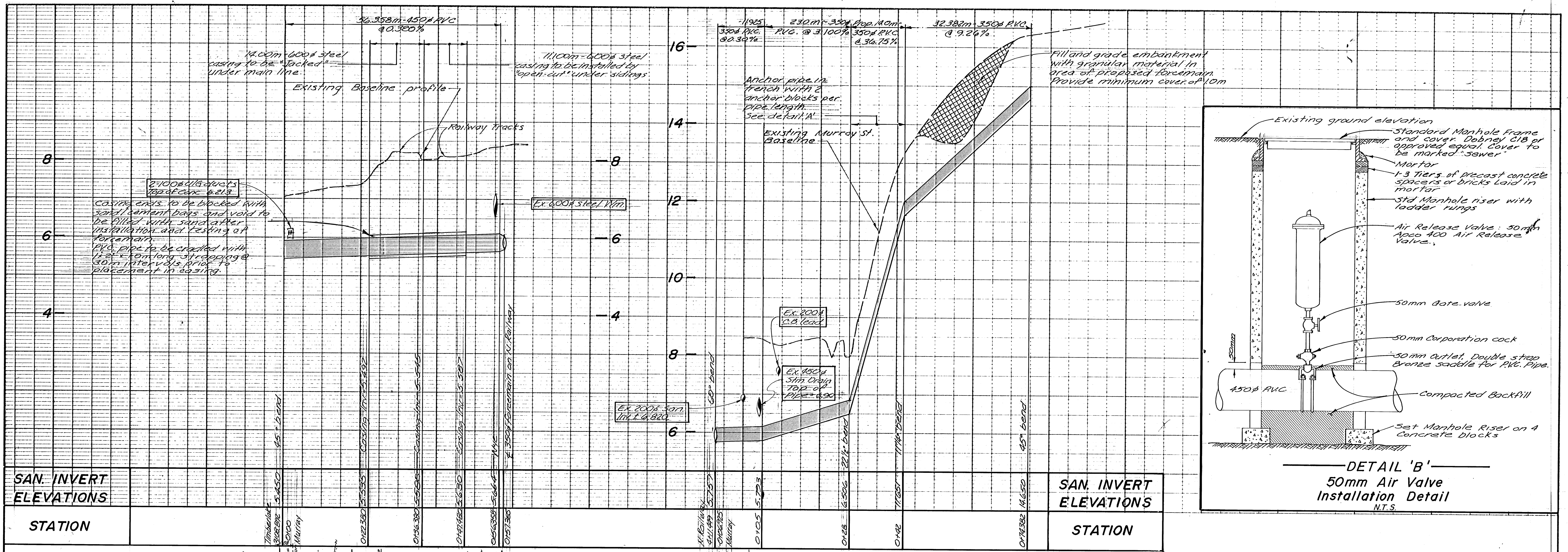
EXISTING	ABANDONED	DESCRIPTION	PROPOSED
—	—	GAS MAINS	—
—	—	STORM DRAINS	—
—	—	WATER MAINS	—
—	—	SEWER MAINS	—
●	○	MANHOLE	○
—	—	CLEARWAY	—
—	—	GATE VALVE	—
—	—	HYDRANT ASSEMBLY	—

DATE	REVISED	DESCRIPTION	BY
CLIENT: THE CORPORATION OF THE TOWN OF MISSION, B.C.			
PROJECT: RELOCATION OF SERVICES			
TITLE: PLAN AND PROFILE GLASGOW STREET			
WILLIS, CUNLIFFE, TAIT & COMPANY LTD. CONSULTING ENGINEERS VICTORIA, B.C.			
DESIGN: E.F.W.M.	SCALE: HOR. 1"=50'	VERT. 1"=5'	
DRAWN: W.E.	DATE: OCTOBER 1959		
CHECKED: <i>[Signature]</i>	APPROVED: <i>[Signature]</i>		
DRAWING NO. S1716-12			REVISION

CROSS SECTION 10 X 10
KERR & ESSER CO.
MEMBER S. ESSER CO.
NEW YORK

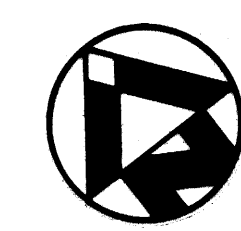
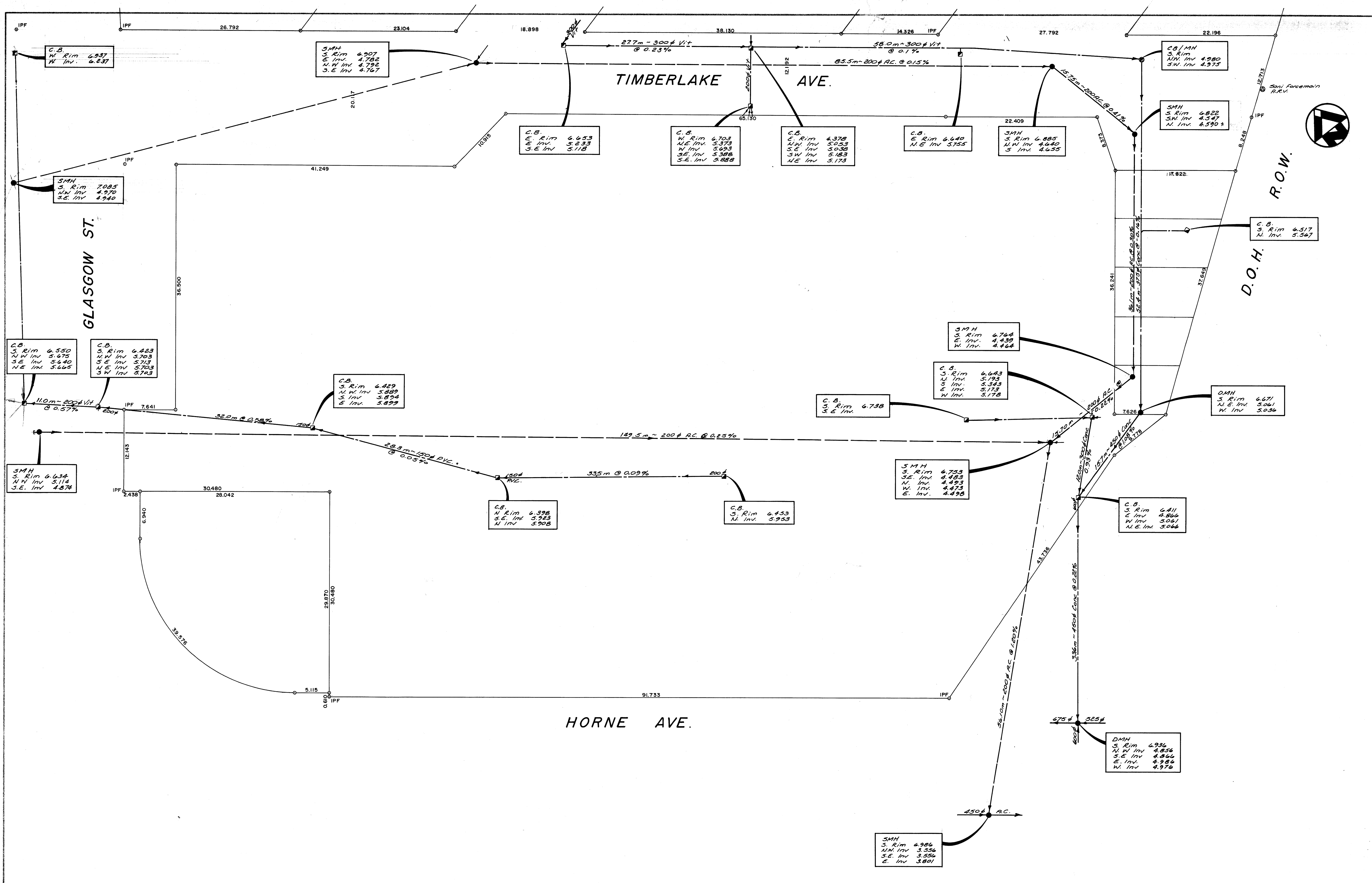
NEW YORK
KERR & ESSER CO.
MEMBER S. ESSER CO.

Old dwg # S124



NOTE: ALL SIZES AND DIMENSIONS ARE METRIC.

AC 19-1283 GC A 15-483 GC				As constructed Approved for Construction	DESIGN C.W.B. DR/IR RL/K.F.B. CHECKED APPROVED	DISTRICT OF MISSION SANITARY SEWER TIMBERLAKE TO FIRST AVENUE	SCALE HORIZ 1:500 VERT 1:50 DATE NOV. 9 1982 DRAWING No. S1716-39 SHEET No. 7 of 8 AC
REV	DATE	DRN	CH.				



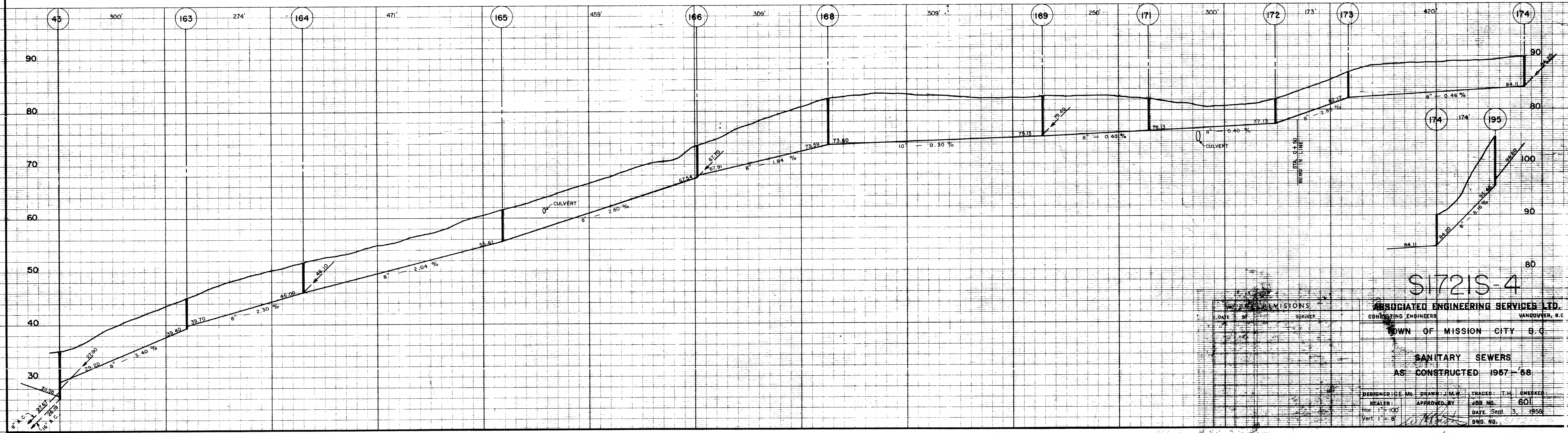
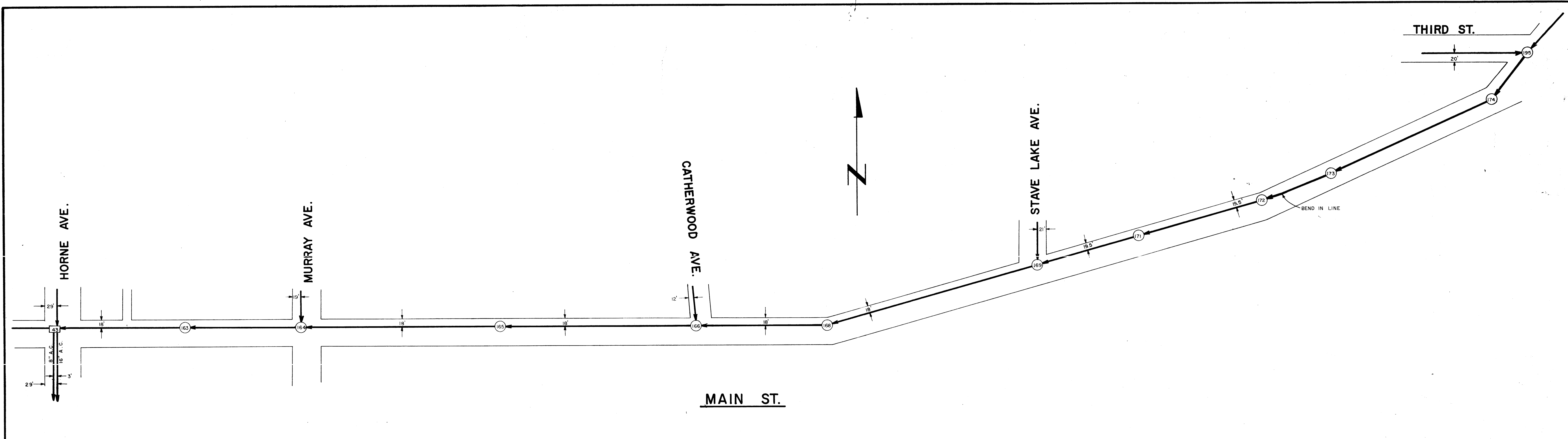
DISTRICT OF MISSION		SCALE
SANITARY & STORM SEW.		1: 250
THRU. SAFEWAY PROPERTY		DATE
TIMBERLAKE - HORNE AVE.		APRIL 20, 1989
DRAWING No.	S1716-47	
SHEET No.	1	

DESIGN			
DR/ TR	G.D.C.		
CHECKED			
APPROVED			
REV'N	DATE	DR'N	CH.

SUPERSEDES PRINTS OF THIS NUMBER WITH LETTERS PREVIOUS TO

B.C.L. 11/21/81 D.M.

S1716-47



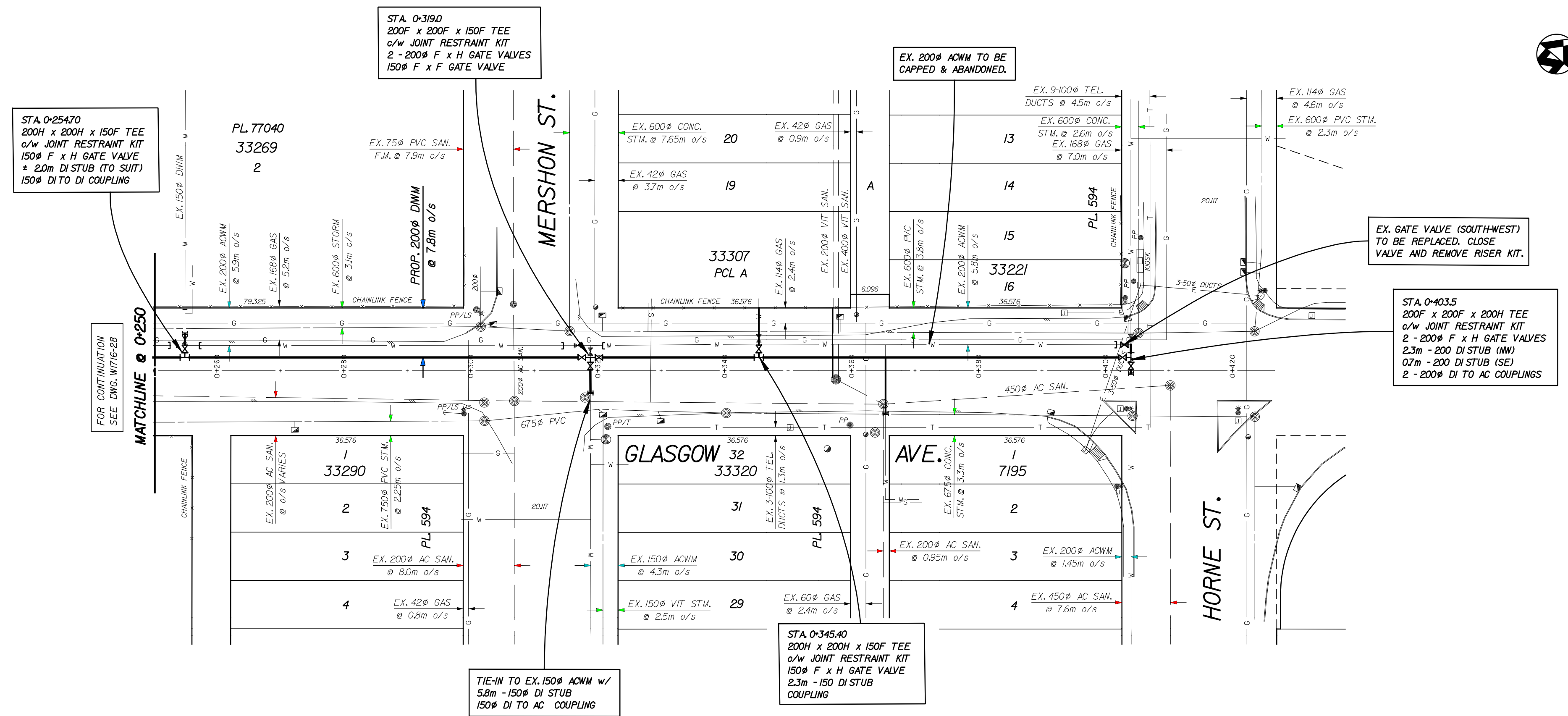
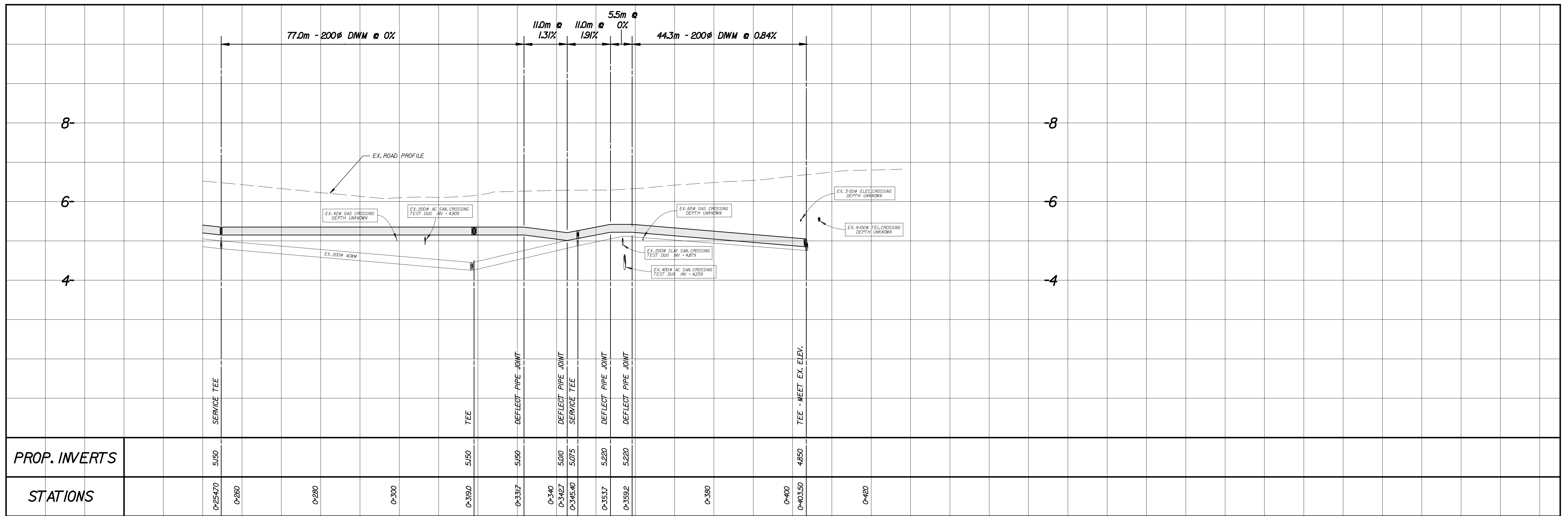
S17215-4

ASSOCIATED ENGINEERING SERVICES LTD.
CONSULTING ENGINEERS VANCOUVER, B.C.

CITY OF MISSION CITY B.C.

SANITARY SEWERS
AS CONSTRUCTED 1957-58

DESIGNED BY: J.M.W.	TRACED BY: T.H.	CHECKED BY:
SCALE: 1" = 100'	DATE: Sept 3, 1958	DWG. NO. 601
APPROVED BY:		



DISTRICT OF MISSION

SCALE: 1:500H / 1:50V

DATE: JULY 2014

DRAWING No. W1716-29

SHEET No. 2 OF 2 AC

DESIGN: _____

DRTR: RS

PROJECT: 2015-01

APPROVED: _____

**WATERMAIN REPLACEMENT
GLASGOW AVE. - ABBOTT ST.
TO HORNE ST.**

REV#	DATE	DRN	CH
AC	04/11/16	RS	AS-COSTRUCTED