

RECORD PHOTOGRAPHS, 1996 DEC

East Cable

1. Work shelter built over main cable at southeast corner.
2. General view of the exposed main cable strands.
3. Outer layers of strands raised on plastic wedges.
4. Outer layers of strands raised on plastic wedges, detail.
5. Rust spots on top strands of main cable (worst case).
6. Dark brown cedar stains under main cable at south cable post.
7. Wrapping machine, single wire with counterweight.
8. Wrapping machine, single wire with counterweight, detail.
9. Main cable, after rewinding and first coat of paint, near the south cable post.

West Cable

10. Work shelter at midspan (C48W).
11. Surface of old wrapping at midspan, with two brown stains [as supplied to B&T by J. Mullen].
12. Typical arrangement of cedar fillers on the main cable. Old wrapping wire is at far end.
13. The main cable at C48W, the left side is repainted with red lead paste.
14. Hand wrapping the main cable at close quarters.
15. Hand wrapping the main cable at close quarters, detail.



No. 1

Work shelter built over main cable at southeast corner.



No. 2

General view of the exposed main cable strands.



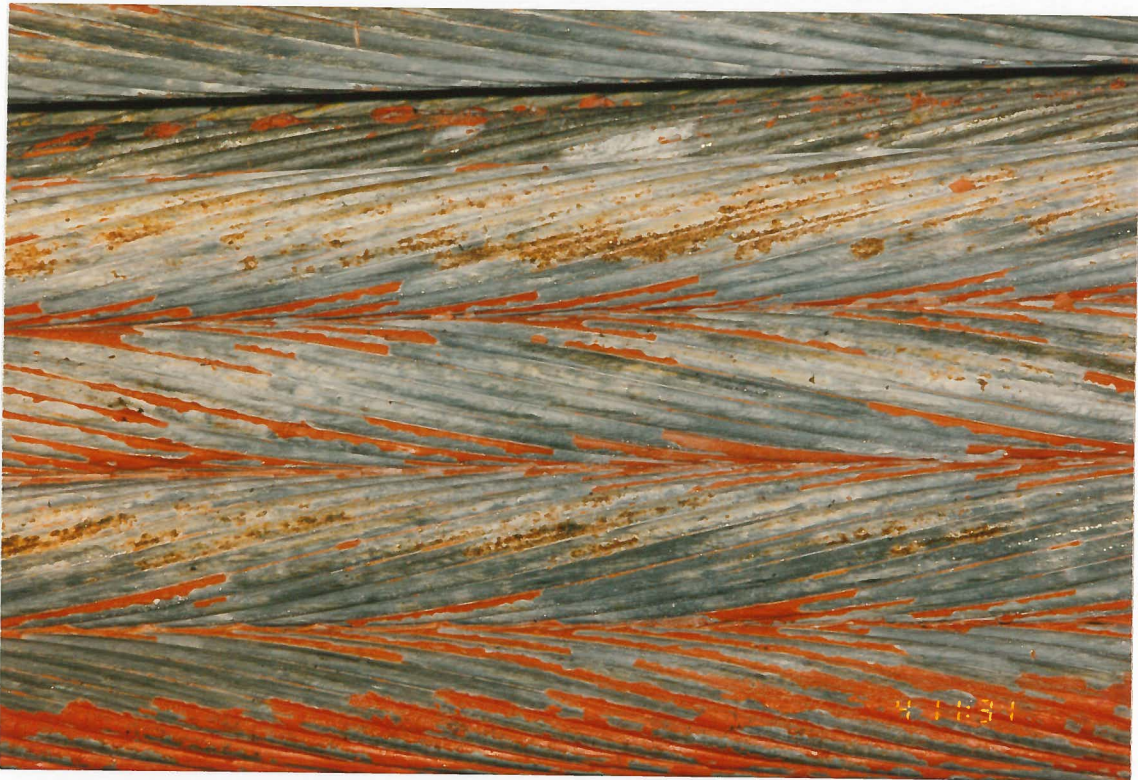
No. 3

Outer layers of strands raised on plastic wedges.



No. 4

Outer layers of strands raised on plastic wedges, detail.



No. 5

Rust spots on top strands of main cable (worst case).



No. 6

Dark brown cedar stains under main cable at south cable post.



No. 7

Wrapping machine, single wire with counterweight.



No. 8

Wrapping machine, single wire with counterweight, detail.



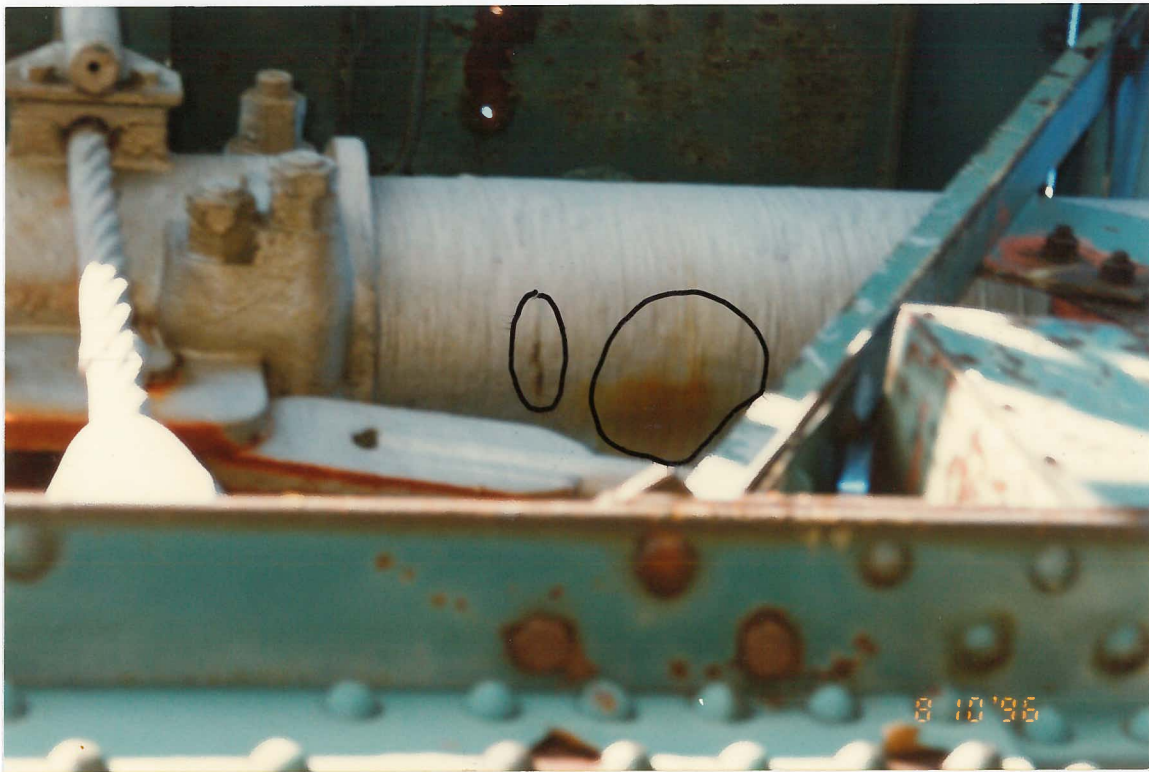
No. 9

Main cable, after rewrapping and first coat of paint, near the south cable post.



No. 10

Work shelter at midspan (C48W).



No. 11

Surface of old wrapping at midspan, with two brown stains [as supplied to B&T by J. Mullen].



No. 12

Typical arrangement of cedar fillers on the main cable. Old wrapping wire is at far end.



No. 13

The main cable at C48W, the left side is repainted with red lead paste.



No. 14

Hand wrapping the main cable at close quarters.



No. 15

Hand wrapping the main cable at close quarters, detail.