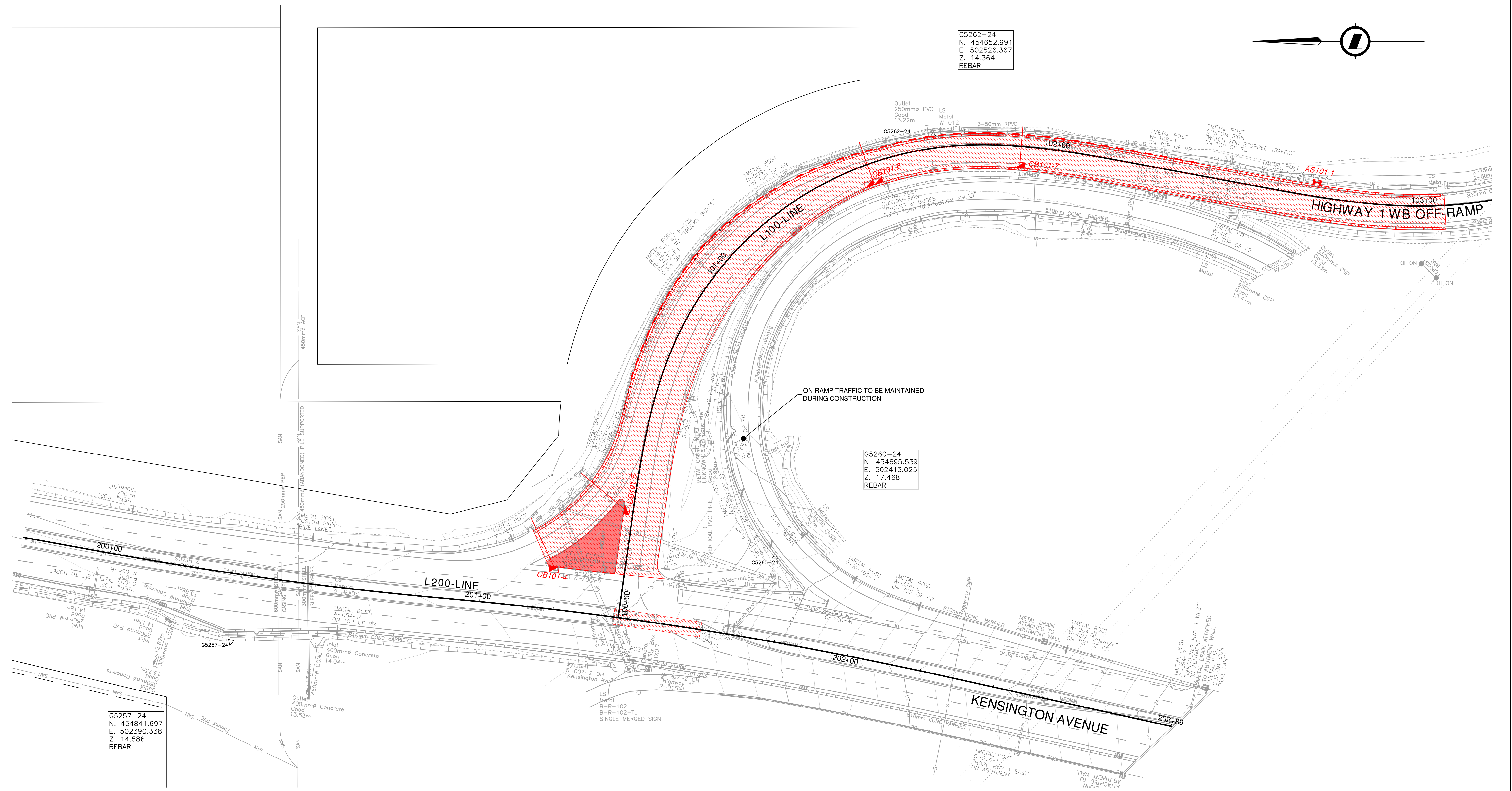


G5262-24
 N. 454652.991
 E. 502526.367
 Z. 14.364
 REBAR



G5260-24
 N. 454695.539
 E. 502413.025
 Z. 17.468
 REBAR

G5257-24
 N. 454841.697
 E. 502390.338
 Z. 14.586
 REBAR

STAGE 1 NOTE:
 EXTENDED 24 HOUR CLOSURE OF HIGHWAY 1 - KENSINGTON OFF-RAMP TO ALLOW FOR CONCRETE SLAB INSTALLATION.
 CENTER SLAB ALONG KENSINGTON AVENUE REQUIRED FOR STAGE 2.

LEGEND:

- STAGE 1
- STAGE 2
- STAGE 3

BINNIE
 The people behind your infrastructure.

R.F. BINNIE & ASSOCIATES LTD.
 300 - 4940 Canada Way,
 Burnaby, BC V5G 4K6
 TEL 604 420 1721
 BINNIE.com

SCALE 0 5 1:500 25m CAD FILENAME: \1200CONST-HWY1-K_WBOFF-24-0018.DWG DATE: 2025-01-09 FILE NUMBER: 24-0018

REV	DATE	REVISIONS	SIGNATURE

BRITISH COLUMBIA MINISTRY OF TRANSPORTATION AND TRANSIT
 SOUTH COAST REGION
 HIGHWAY ENGINEERING AND GEOMATICS

CONSTRUCTION STAGING - STAGE 1
 HIGHWAY No. 1
 KENSINGTON OFF-RAMP SETTLEMENT REMEDIATION
 OFF-RAMP SLAB INSTALLATION

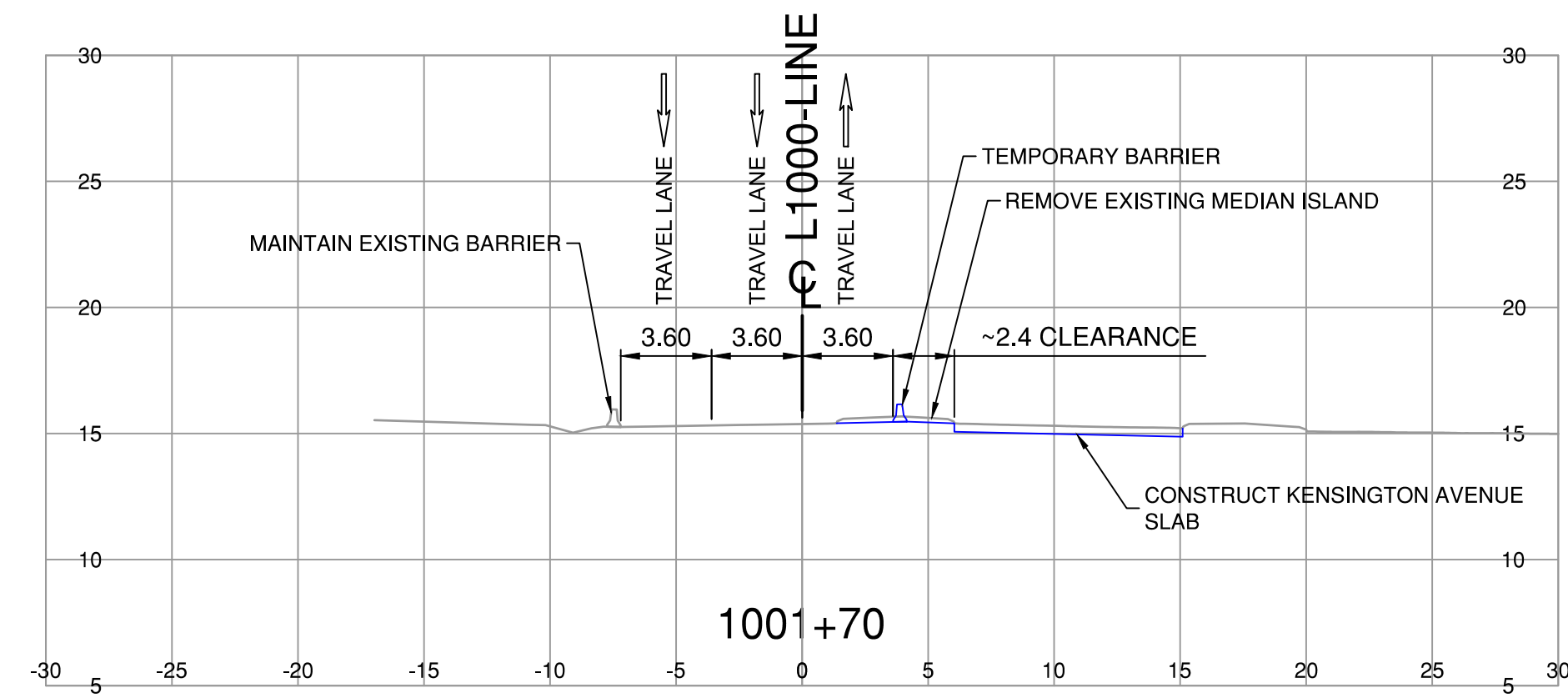
NOT FOR CONSTRUCTION

DESIGNED	DATE	FEB 2025
QUALITY CONTROL	DATE	FEB 2025
QUALITY ASSURANCE	DATE	FEB 2025
DRAWN	N.B.	DATE FEB 2025

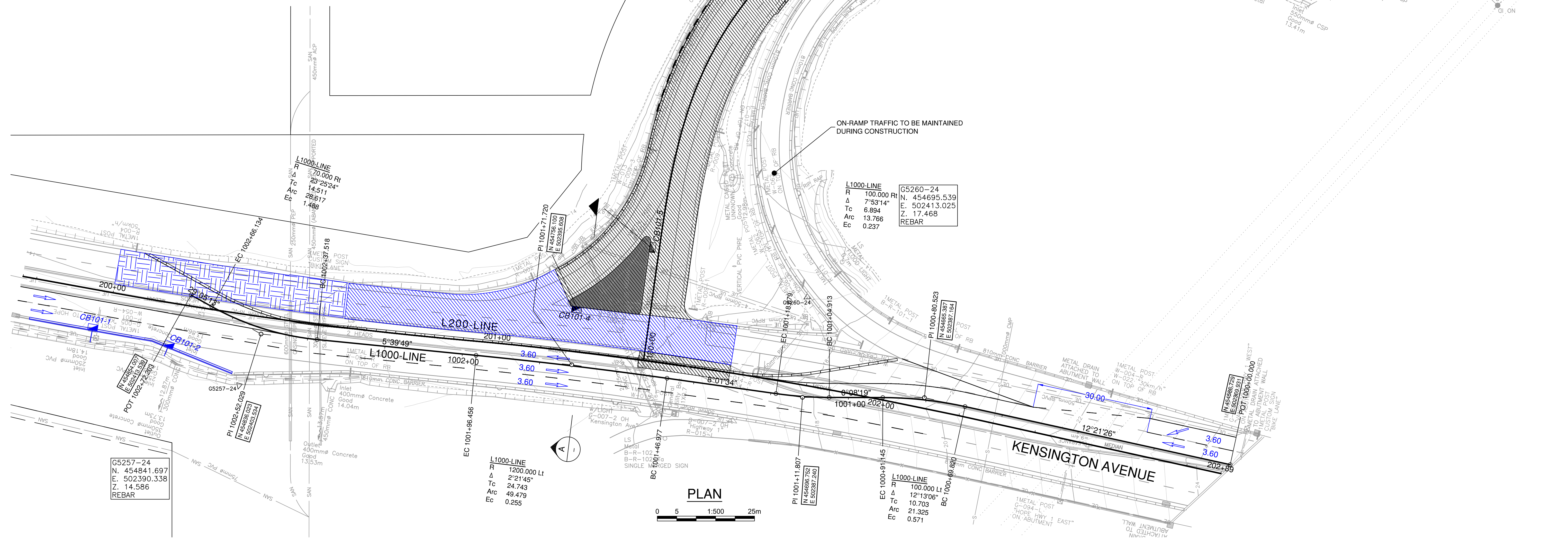
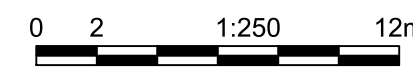
PROJECT NUMBER: 12956-0001 REG: 1 DRAWING NUMBER: R1-1130-1201

ENGINEER OF RECORD DATE

Jan. 9, 2025 - 11:43 AM P:\2024\24-0018-00 - CAD Files\04-Hwy1-K_WBOFF\Drawings\Production\1100_Subdisciplines\Construction\Stage1\1200CONST-HWY1-K_WBOFF-24-0018



SECTION A-A



PLAN



STAGE 2 NOTE:

CONTRACTOR TO PROVIDE NORTHBOUND CROSSOVER DETOUR TO FACILITATE SLAB INSTALLATION. CROSSOVER DETOUR ALLOWED UNTIL AUGUST 31, 2025.

LEGEND:

- STAGE 1
- STAGE 2
- STAGE 3

BINNIE
The people behind your infrastructure.

R.F. BINNIE & ASSOCIATES LTD.
300 - 4940 Canada Way,
Burnaby, BC V5G 4K6
TEL 604 420 1721
BINNIE.com

BRITISH COLUMBIA

MINISTRY OF TRANSPORTATION AND TRANSIT
SOUTH COAST REGION
HIGHWAY ENGINEERING AND GEOMATICS

SCALE AS SHOWN

CAD FILENAME: 1200CONST - HWY1-K_WBOFF - 24-0018.DWG
DATE: 2025-01-09
FILE NUMBER: 24-0018

REV	DATE	REVISIONS	SIGNATURE

CONSTRUCTION STAGING - STAGE 2
HIGHWAY No. 1
KENSINGTON OFF-RAMP SETTLEMENT REMEDIATION
KENSINGTON AVENUE SLAB INSTALLATION

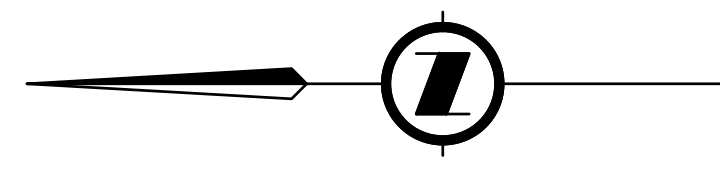
NOT FOR CONSTRUCTION

DESIGNED: _____ DATE: FEB 2025
QUALITY CONTROL: _____ DATE: FEB 2025
QUALITY ASSURANCE: _____ DATE: FEB 2025
DRAWN: _____ N.E. DATE: FEB 2025

PROJECT NUMBER: 12956-0001
REG: 1
DRAWING NUMBER: R1-1130-1202

ENGINEER OF RECORD: _____
DATE: _____

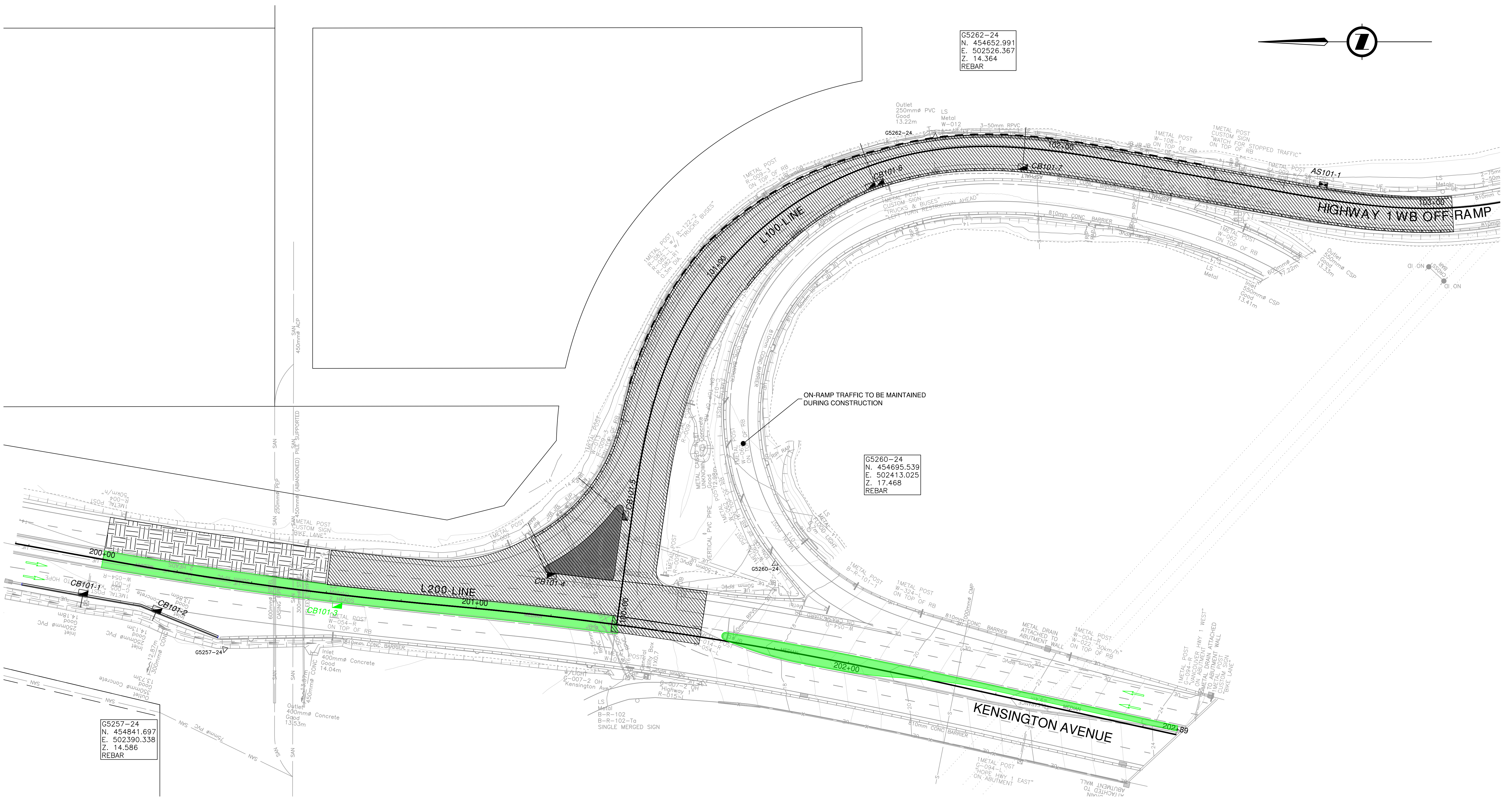
Jan. 9, 2025 - 11:43 AM P:\2024\24-0018-00 - CAD Files\00-Hwy1-K_WBOFF\Drawings\Production\1200CONST - Hwy1-K_WBOFF - 24-0018



G5262-24
 N. 454652.991
 E. 502526.367
 Z. 14.364
 REBAR

G5260-24
 N. 454695.539
 E. 502413.025
 Z. 17.468
 REBAR

G5257-24
 N. 454841.697
 E. 502390.338
 Z. 14.586
 REBAR



STAGE 3 NOTE:
 TRAFFIC TO BE RESTORED TO ORIGINAL CONDITIONS.
 CONSTRUCT MEDIAN ISLANDS.

LEGEND:

- STAGE 1
- STAGE 2
- STAGE 3

BINNIE
 The people behind your infrastructure.

R.F. BINNIE & ASSOCIATES LTD.
 300 - 4940 Canada Way,
 Burnaby, BC V5G 4K6
 TEL 604 420 1721
 BINNIE.com

SCALE 0 5 1:500 25m CAD FILENAME 1200CONSTR-HWY1-K-WBOFF-24-0018.DWG DATE 2025-01-09 FILE NUMBER 24-0018

REV	DATE	REVISIONS	SIGNATURE

BRITISH COLUMBIA MINISTRY OF TRANSPORTATION AND TRANSIT
 SOUTH COAST REGION
 HIGHWAY ENGINEERING AND GEOMATICS

CONSTRUCTION STAGING - STAGE 3
 HIGHWAY No. 1
 KENSINGTON OFF-RAMP SETTLEMENT REMEDIATION
 REMAINDER OF KENSINGTON AVENUE SLAB INSTALLATION

NOT FOR CONSTRUCTION

DESIGNED	DATE	FEB 2025
QUALITY CONTROL	DATE	FEB 2025
QUALITY ASSURANCE	DATE	FEB 2025
DRAWN	J.T.	DATE FEB 2025

PROJECT NUMBER	REG	DRAWING NUMBER	REV
12956-0001	1	R1-1130-1203	

ENGINEER OF RECORD DATE

Jan. 9, 2025 - 11:43 AM. I:\cibby\4604\Projects\2024\24-0018\01-1800 - CAD Files\00-Hwy1-K-WBOFF\Drawings\Production\1100_Slab\Drawings\Construction\Stage3\1200CONSTR-HWY1-K-WBOFF-24-0018