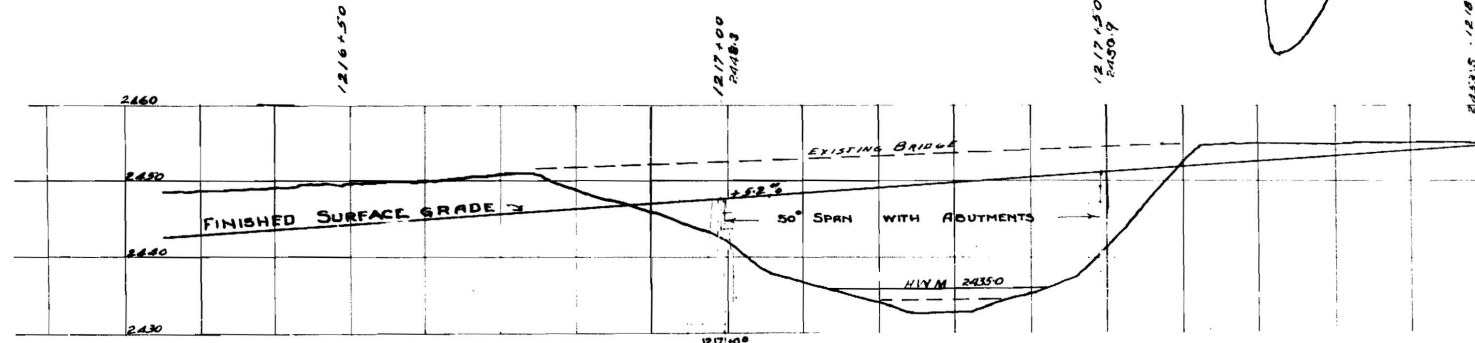
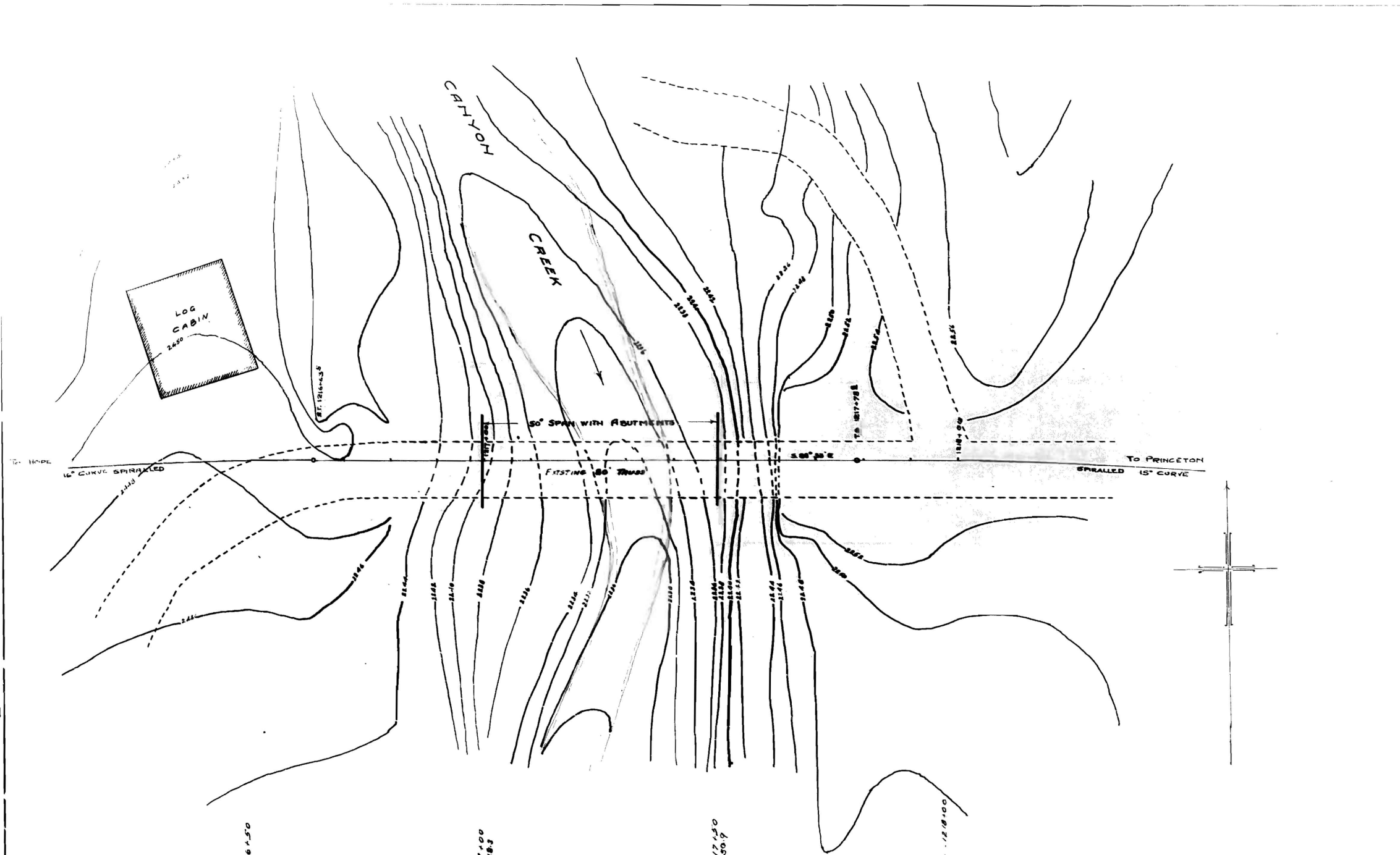


BRIDGE 2

BRIDGE 2



FORMATION: GRAVEL WITH SMALL BOULDERS.

BRIDGE SITE  
CANYON CREEK MILE 2305  
Scale 10 FT = 1 inch

DEPARTMENT OF PUBLIC WORKS OF B.C.

**HOPE - PRINCETON ROAD**

**HOPE SECTION**

BRIDGE SITE, STA 1217+30 MILE 23<sup>05</sup>

Scale 1 inch = 10 FT

DESIGNED BY: H. G. McMillan  
CHECKED BY: [ ]  
DRAWN BY: [ ]

DISTRICT PLAN NO. [ ]  
DEPARTMENT PLAN NO. 1214  
DATE FILED [ ]

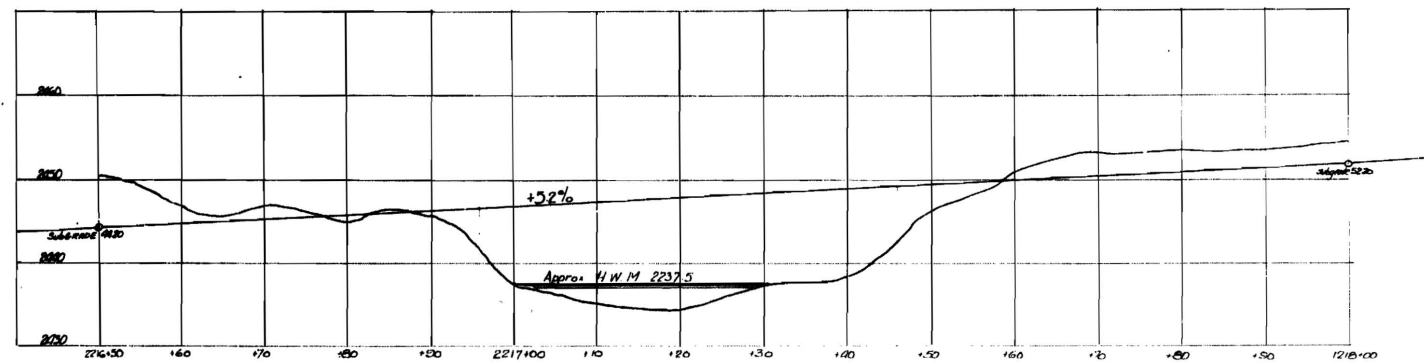
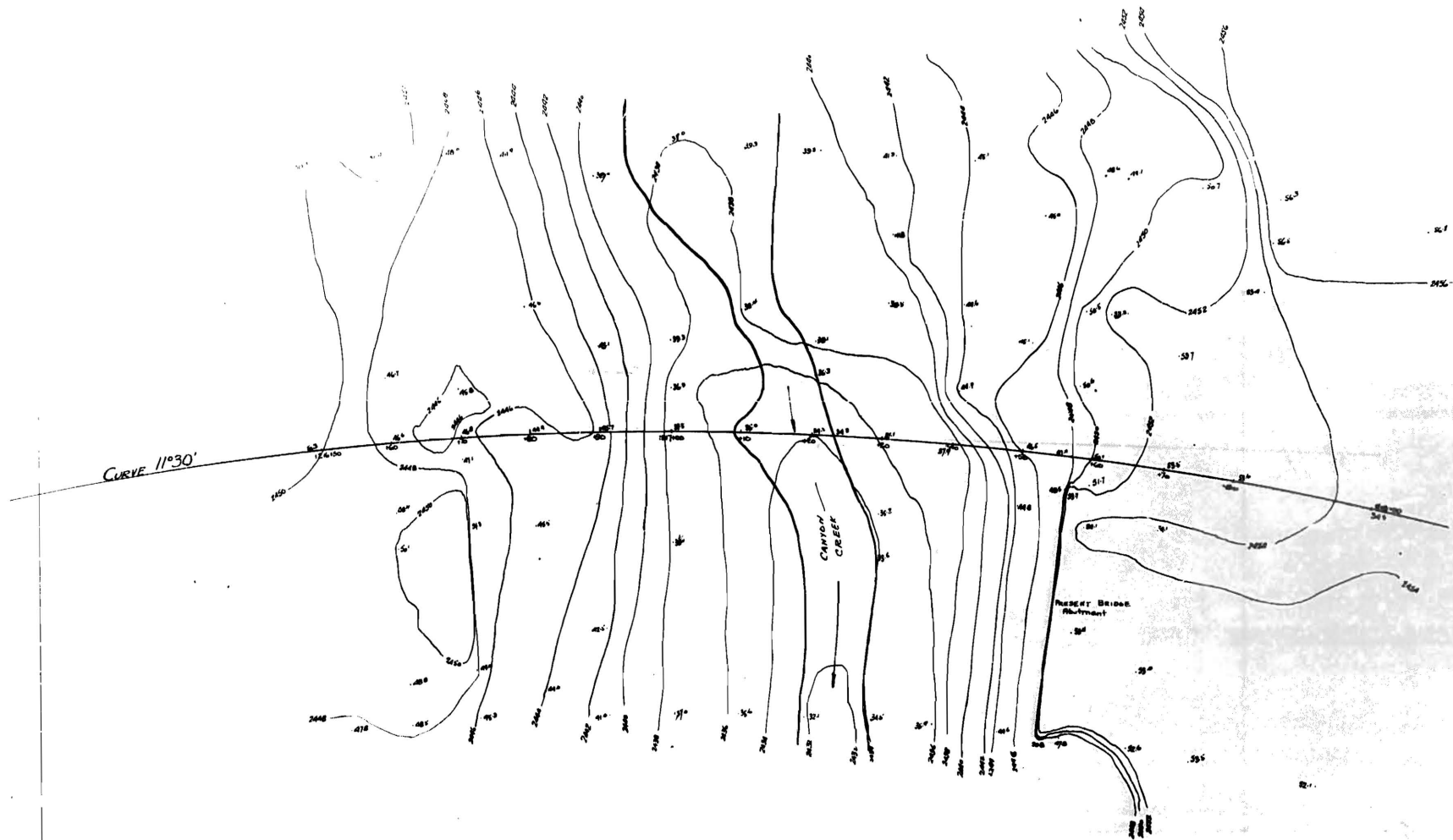
APPROVED

HAMLOOPS G.C.  
LOCATION ENGINEER

VICTORIA B.C.  
CHIEF ENGINEER

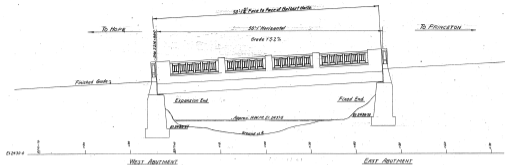
1514

1514

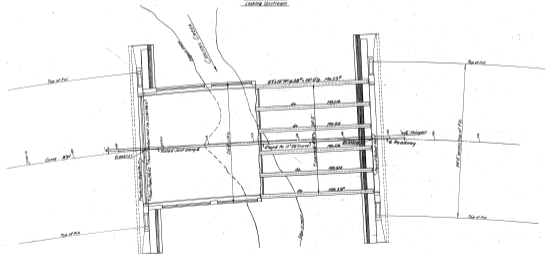


GRADE SHOWN IS SUBGRADE - ONE FOOT BELOW FINISHED GRADE  
 GRADE MAINTAINED AT 16ft R.O.F. SUPER ELEVATION 0.06/ft

DEPT. OF PUBLIC WORKS  
 HOPE-PRINCETON HIGHWAY  
 SECTION A  
 BRIDGE SITE AT CANYON CREEK  
 STATION 227+30  
 SCALE 1" = 10'  
 SURVEYED BY J. C. ALLEN  
 DRAWN BY J. C. ALLEN  
 DATE 12-15-1912



ELEVATION  
Looking South-west



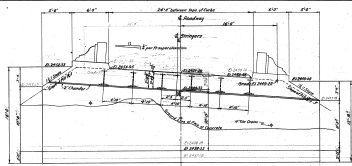
PLAN

SOUTHERN TRANS-PROVINCIAL HWY  
HOPE-PRINCETON SECTION A  
CANYON CREEK BRIDGE MILE 23.05  
LAYOUT  
Scale 1/4" = 10'

GOVT. OF BRITISH COLUMBIA	
DEPT. OF PUBLIC WORKS	
VICTORIA	
Made by: G.D. Fisher, P.E.	Checked by: J.F. [unclear]
Drawn by: [unclear]	Scale: 1/4" = 10'
Chief Engineer: [unclear]	1214-6



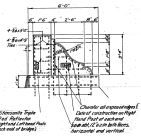
END VIEW



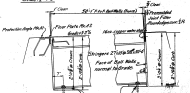
ELEVATION OF EAST ABUTMENT



END VIEW



Wire Post  
Scale 1/2" = 1'-0"



EXTERIOR SECTION  
AT WEST ABUTMENT  
Scale 1/2" = 1'-0"

FIXED BEAMS  
AT EAST ABUTMENT  
Scale 1/2" = 1'-0"

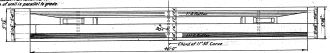
DETAILS OF BRIDGE SEATS  
Scale 1/2" = 1'-0"

**NOTE:** Abutment to be Class B concrete. Central Wire Posts to be Class C concrete. Reinforcement to be covered down to depth shown or to such greater or lesser depths as may be determined by the Engineer. All exposed edges of concrete to be chamfered. Unless shown otherwise all reinforcement to have 1/2" cover. Plans to show course of courses given behind railroad if the bridge through rail is shown.

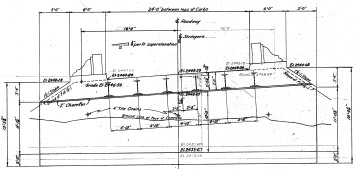
**Estimated Quantities**  
Class B Concrete 25 cu yds  
Class C Concrete 120-4 cu yds



SECTIONAL C



PLAN OF EAST ABUTMENT



ELEVATION OF WEST ABUTMENT



END VIEW



SECTIONAL D

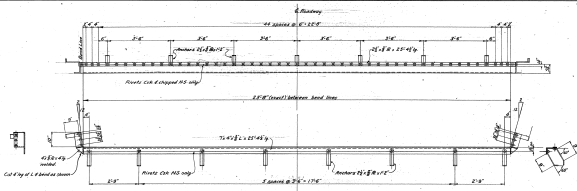


PLAN OF WEST ABUTMENT  
Scale 1/2" = 1'-0"

END VIEW

**SOUTHERN TRANS-PROVINCIAL HWY**  
**HOPE-PRINCETON SECTION**  
**CANYON CREEK BRIDGE MILE 23.05**  
**DETAILS OF ABUTMENTS**  
Scale as Noted

GOVT. of BRITISH COLUMBIA  
DEPT. of PUBLIC WORKS  
VICTORIA  
Made by G.E.D. 4/24/42  
Checked by H.H. 4/24/42  
148  
1234-9



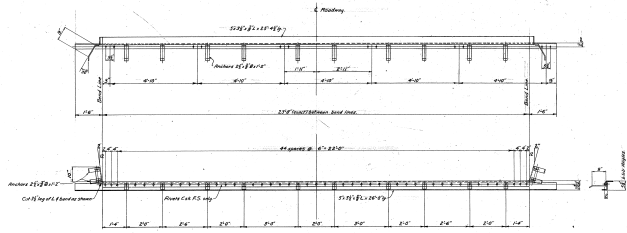
BALLAST WALL PROTECTION ANGLE MK. A2

**BILL OF MATERIAL**

No.	Material	Length	Description	Weight	Total Wt
1	2x8 Joist	22'-4"		36.5	
1	2x8 Joist	22'-4"		36.5	
17	2x8 Joist	1'-2"	Anchor	6.3	
2	4x4 Joist	6'		2	
6.2	2 Rivets			32	
Total Weight Lbs.				522	522
<b>Flange Diaphragm</b>					
1	1x12 Joist	20'-8"		277	
1	5x12 Joist	20'-8"		264	
16	2x8 Joist	1'-2"	Anchor	22	
22	2 Rivets			22	
12	2 Wash Bolts	2x Hex Anchor Ends		8	
Total Weight Lbs.				628	628
Total weight one Expansion Joint complete					1150



EXPANSION JOINT ASSEMBLY



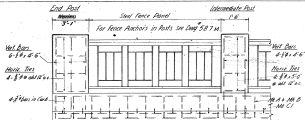
DECK SLAB FLOOR PLATE MK. A1

Rivets 2x  
 Plates 1/2"  
 Paint - All material except surfaces to be  
 covered in concrete like pavements  
 Shop Coat Road Lead  
 Submit 4 prints of shop drawings for approval  
 before fabricating.

SOUTHERN TRANS-PROVINCIAL HWY  
HOPE-PRINCETON SECTION  
CANYON CREEK BRIDGE MILE 28.5  
DETAILS OF EXPANSION JOINT

Scale 3/16"

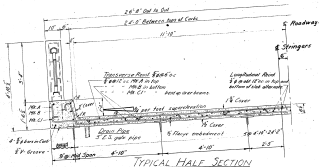
GOVT. OF BRITISH COLUMBIA DEPT. OF PUBLIC WORKS VICTORIA	
Drawn by: G.C.O. (10/24/40)	Checked by: G.C.O. (10/24/40)
Designed by: G.C.O. (10/24/40)	Checked by: G.C.O. (10/24/40)
Drawn by: G.C.O. (10/24/40)	Checked by: G.C.O. (10/24/40)
Designed by: G.C.O. (10/24/40)	Checked by: G.C.O. (10/24/40)



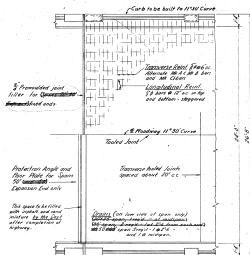
TYPICAL SECTIONAL ELEVATION OF CURB AND FENCE

SPRINGER SIZES

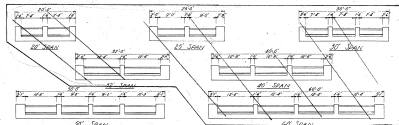
Span	SPRINGER
10	12" x 12" x 12"
20	16" x 16" x 25"
30	18" x 18" x 34"
40	24" x 24" x 44"
50	27" x 27" x 50"



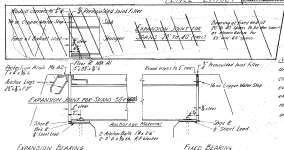
TYPICAL HALF SECTION



PART PLAN  
SCALE 1/4" = 1'-0"



FENCE LAYOUT



DETAILS AT ABUTMENTS

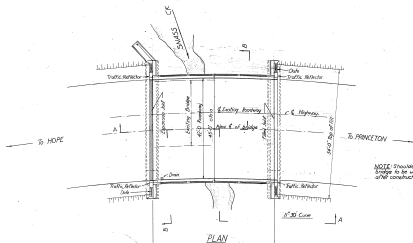
Notes: Concrete in Slab, Curb, and Fence Posts to be Class 70 concrete. All exposed edges of concrete to be chamfered 5" except as otherwise noted. All reinforcing to have 18" cover unless shown otherwise.

CANYON CREEK BRIDGE  
MILE 23.05  
SOUTHERN TRANS-PROV HWY  
HOPE-PRINCETON, SEC  
FUTURE DECK LAYOUT  
SUPERSEDED  
BEAM SPANS  
SCALE 1/4" = 1'-0" (Noted)

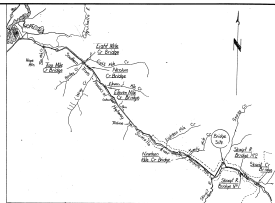
ESTIMATED CONCRETE IN SLAB, CURB & POSTS

Span	60'	50'	40'	30'	20'	10'
CUB	100	100	100	100	100	100
POSTS	100	100	100	100	100	100
TOTAL	200	200	200	200	200	200

APPROVED FOR THE DISTRICT ENGINEER  
DATE: 11/10/1918  
BY: [Signature]  
DIVISION OF HIGHWAYS  
STATE OF ARIZONA

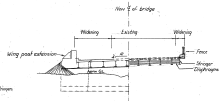


NOTE: Shoulders of both ends of bridge to be widened by others as per construction of wily post extensions

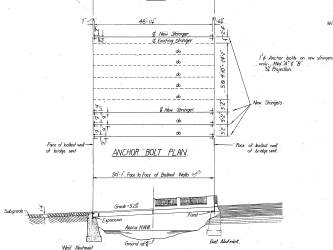


KEY MAP  
Scale 1" = 2 Miles

PLAN



SECTION B-B



VIEW A-A

LIST OF DRAWINGS	
Draw No.	Title
1242-10	Layout, Anchor Bolt Plan, & Key Map
1242-11	Alignment
1242-12	Structural Details
1242-13	Deck Details
REFERENCE DRAWINGS (EXISTING BRIDGES)	
1242-14	Layout
1242-15	Details of Abutments
1242-16	Details of Expansion Joint
1242-17	Deck Layout
1242-18	Structural Steel Mill Spans

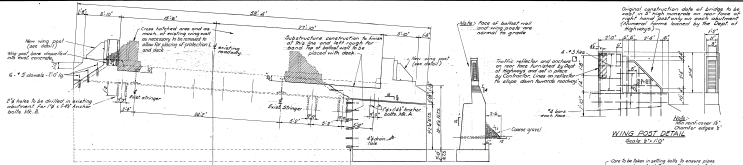
- Notes
- 1 Specifications, Dept of Highways
  - 2 Loading H-20
  - 3 Deflection, Camber
  - 4 Beach Mark, Direction of existing bridge, and of E. of Red Abutment, 204.67'

BRITISH COLUMBIA DEPARTMENT OF HIGHWAYS  
BRIDGE ENGINEER'S OFFICE

YALE DISTRICT  
SOUTHERN TRANS-PROVINCIAL HIGHWAY  
CANYON CREEK BR-IMPROVEMENTS  
LAYOUT ANCHOR BOLT PLAN, KEY MAP

NO.	REVISIONS	DATE
1		
2		
3		
4		

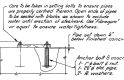
DESIGNER: M. J. [Signature]  
DRAWN BY: [Signature]  
CHECKED: [Signature]  
SCALE: 1" = 20' AND AS NOTED  
DRAWING NO.: 1242-10  
DATE: [Signature]



ELEVATION

END VIEW

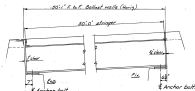
WING POST DETAIL  
Scale: 1/2" = 1'-0"



DETAIL AT BRIDGE SEAT (Setting of anchor bolts in new concrete)  
Scale: 3/4" = 1'-0"

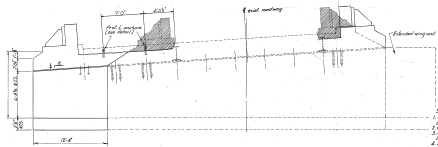


PLAN  
EAST ABUTMENT



NOTES

1. Concrete to be Class II except wing posts and top portion of ballast void which will be Class A.
2. Chamber on exposed edges to match those of existing abutments.
3. Ridges to be carried down to abutment abutment or to such lower structures as may be required by the Engineer.
4. A temporary course of 2" concrete general to be placed at back of each abutment extension as shown.
5. Anchor ball pipes over holes to be filled with sand-cement grout immediately before placing of concrete.
6. Reinforcing steel to be structural grade.
7. 1/2" dia. dia. of pipe to be used for setting line to be 3' dia.



ELEVATION  
WEST ABUTMENT  
All steel shapes similar to West Abut

	ESTIMATED QUANTITIES				B	C	E
	Reinf. steel	Class A	Class X	Class Y			
East Abut	110 lbs	14 cu yd	22 cu yd	1 cu yd			
West Abut	100 "	18 "	29 ex cu yd	1 cu yd			
Wing Post	200 lbs	3 cu yd	31 cu yd				

REVISIONS

BRITISH COLUMBIA DEPARTMENT OF HIGHWAYS  
BRIDGE ENGINEER'S OFFICE

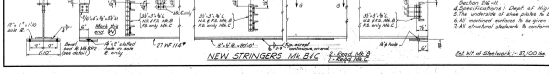
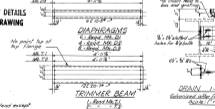
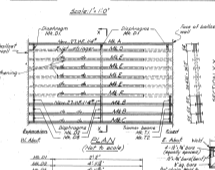
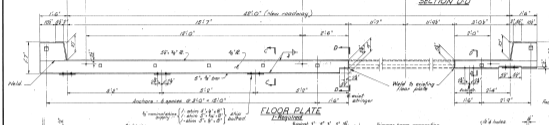
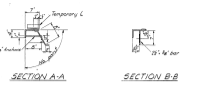
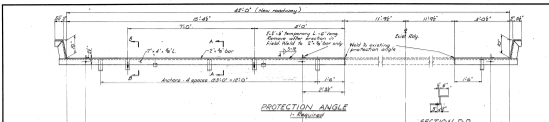
YALE DISTRICT  
SOUTHERN TRAIL - PROVINCIAL HIGHWAY  
CANYON CREEK BR. IMPROVEMENTS  
ABUTMENTS

DESIGN: J.A.S. [Signature]  
DRAWN: J.W. [Signature]  
CHECKED: J.S. [Signature]

SCALE: 1/2" = 1'-0" AND AS NOTED

DRAWING No. 2148-D-1A  
1948





**BRITISH COLUMBIA DEPARTMENT OF HIGHWAYS  
BRIDGE ENGINEER'S OFFICE**

**YALE DISTRICT**  
SOUTHERN TRANS-PROVINCIAL HIGHWAY  
CANYON CREEK BR. IMPROVEMENTS  
**STEELWORK DETAILS**

1. 3/8\"/>

2. Shop rivets 3/4\"/>

3. Rivet all overhead on shop rivet not least except having overhead and where noted otherwise surfaces inaccessible after erection shall be given shop rivets in accordance with the Dept's General Specifications Section 106-11.

4. Specifications: Dept of Highways

5. The underside of steel plates to be 1/8\"/>

6. All members surfaces to be given one shop coat of lacquer.

7. All structural platework to conform to C.S.A. Specifications G40.3.

Scale 1/4\"/>

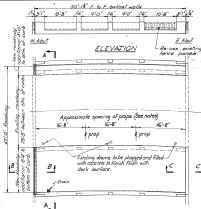
Drawn: [Signature]  
Checked: [Signature]

DESIGN: [Signature]  
DRAWN: [Signature]  
CHECKED: [Signature]

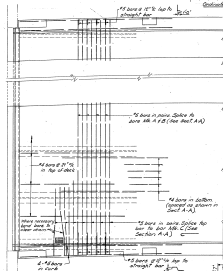
REVISIONS:

B	AS NOTED
C	AS NOTED
A	CHANGES M.K. B/C

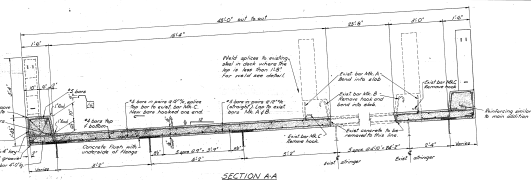
DRAWING NO. 214-1A



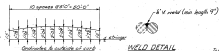
**PLAN**  
Scale: 1" = 10'



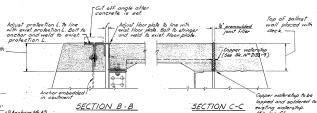
**PART PLAN**  
Scale: 1" = 10'



**SECTION AA**



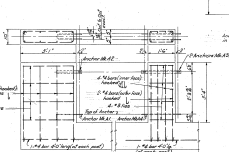
**WELD DETAIL**



**SECTION B-B**

**SECTION C-C**

Scale: 1/2" = 10'



**DETAIL AT DRAIN**

**NOTES**

1. All concrete to be Class A, high early strength.
2. Curbs to be formed and placed under roadway slab is not 3/4" exposed edges & have 3" chamfer.
3. Reinforcing steel to be sufficient.
4. Reinforcing to have 1/2" cover unless noted otherwise.
5. Maximum size of props to be used for forming bars including props to be 1/2" for floor and 1/2" for bars and under.
6. Maximum of 1/2" cover on top of deck to 1/2" top of bars for splices to be 1/2" distance to be staggered.
7. Drilling wherever it is required of positions shown is critical for in special provisions so that no tie bar deflection will occur.

**ESTIMATED QUANTITIES**

Concrete	50 cu yds
Reinforcing steel	7,200 lbs.

DATE	BY	REVISIONS
12/14/81	12/14/81	

**BRITISH COLUMBIA DEPARTMENT OF HIGHWAYS  
BRIDGE ENGINEER'S OFFICE**

**YALE DISTRICT  
SOUTHERN TRANS-PROVINCIAL HIGHWAY  
CANYON CREEK BR-IMPROVEMENTS  
DECK DETAILS**

DESIGN: 12/14/81  
DRAWN: 12/14/81  
CHECKED: 12/14/81  
SCALE: 1/2" = 10' AND AS NOTED  
DRAWING NO.: 12/14-81  
SHEET NO.: 12/14-81

<b>GOVERNMENT OF BRITISH COLUMBIA</b> DEPARTMENT OF HIGHWAYS BRIDGE ENGINEER'S OFFICE		Bill No. <u>104-11</u> Date Issued <u>1/21</u> Date Recd. <u>1/21</u> Date Recd. <u>1/21</u> Date Recd. <u>1/21</u> Date Recd. <u>1/21</u>	
<b>BILL OF REINFORCING STEEL</b> <b>SUPERSTRUCTURE</b> <b>CONTROLLED BRIDGE</b>			
NAME OF WORK: _____			
NO.	QTY.	UNIT	DESCRIPTION
1.	300	ft	
2.	2320	ft	
3.	1720	ft	
Column steel is not deep enough for it.			
Total weight 7440 lb			
Reinforcing bars shall be in accordance with the provisions specified in the Specifications for Concrete and Reinforcing Steel for Highway Bridges, 1958. All bars shall be structural grade unless otherwise specified.			

<b>GOVERNMENT OF BRITISH COLUMBIA</b> DEPARTMENT OF PUBLIC WORKS		Bill No. <u>1</u> Date Issued <u>10/1/58</u> Date Recd. <u>10/1</u> Date Recd. <u>10/1</u> Date Recd. <u>10/1</u> Date Recd. <u>10/1</u>		
<b>BILL OF REINFORCING STEEL, FLOOR OVER BRIDGE</b> <b>WIDE BRIDGE, SUPERSTRACTION BRIDGE</b>				
NO.	QTY.	UNIT	DESCRIPTION	REMARKS
1.	875.00	sq ft	Wide Floor beam 6" x 12" concrete with steel plates, and 2" x 12" concrete slabs, all as detailed in Day No. 228-1 attached.	30,475
Measurements attached as detailed in Day No. 228-1 attached.				
<b>REINFORCING STEEL REQUIRED AS DETAILED IN DAY NO. 228-1</b>				
1.	1.00	sq ft	Reinforcing steel for 3-Floor Floor beam at complete with slabs.	1,000
2.	1.00	sq ft	Plate, steel for Expansion Joint, steel on slabs.	1
3.	1.00	sq ft	Plate, steel for Expansion Joint, steel on slabs.	1
4.	1.00	sq ft	Plate, steel for Expansion Joint, steel on slabs.	1
11.	1.00	sq ft	Reinforcing steel for 3-Floor Floor beam at complete with slabs.	1,000
All steel to be used for slabs 10-15-58				

<b>GOVERNMENT OF BRITISH COLUMBIA</b> DEPARTMENT OF PUBLIC WORKS		Bill No. <u>2</u> Date Issued <u>10/1/58</u> Date Recd. <u>10/1</u> Date Recd. <u>10/1</u> Date Recd. <u>10/1</u> Date Recd. <u>10/1</u>		
<b>BILL OF REINFORCING STEEL, FLOOR OVER BRIDGE</b> <b>WIDE BRIDGE</b>				
NO.	QTY.	UNIT	DESCRIPTION	REMARKS
1.	1.00	sq ft	Reinforcing steel for 3-Floor Floor beam at complete with slabs.	1,000
2.	1.00	sq ft	Plate, steel for Expansion Joint, steel on slabs.	1
<b>REINFORCING STEEL REQUIRED AS DETAILED IN DAY NO. 228-1</b>				
4.	1.00	sq ft	Reinforcing steel for 3-Floor Floor beam at complete with slabs.	1,000
4.	1.00	sq ft	Plate, steel for Expansion Joint, steel on slabs.	1
20.	1.00	sq ft	Reinforcing steel for 3-Floor Floor beam at complete with slabs.	1,000
Total weight 1000 lb				
All steel to be used for slabs 10-15-58				

GOVERNMENT OF BRITISH COLUMBIA

P.W. 224

DEPARTMENT OF PUBLIC WORKS

BILL OF MATERIALS FOR BRIDGE OVER RIVER

BRIDGE NO. 100 - BRIDGE OVER RIVER

Bill No. 1  
 Date Aug. 20, 1926.  
 Drawn by J.E.S.  
 Checked by S.E.S.  
 Approved by J.P.

ITEM NO.	QTY.	LENGTH	DESCRIPTION	Weight lbs.	Total weight lbs.
			Reinforcing steel for 100' diameter iron pipe as per 100' No. 10 and 100' No. 12 - 8' diameter.		5,400
			<u>REINFORCING STEEL FOR ARCHES</u>		
101	100	1 1/2"	1 1/2" Fl. straight.	104	
102	100	"	"	107	
103	50	"	"	50	
			<u>Total weight lbs.</u>		<u>5,658</u>

All material to be marked for shipment "B.C. 224"

GOVERNMENT OF BRITISH COLUMBIA

P.W. 224

DEPARTMENT OF PUBLIC WORKS

BILL OF MATERIALS FOR BRIDGE OVER RIVER

BRIDGE NO. 100 - BRIDGE OVER RIVER

Bill No. 2  
 Date Aug. 20, 1926.  
 Drawn by J.E.S.  
 Checked by S.E.S.  
 Approved by J.P.

ITEM NO.	QTY.	LENGTH	DESCRIPTION	Weight lbs.	Total weight lbs.
1	1	10'	10' dia. short support, built to plans below.		
2	1	10'	10' dia. " " " " " "		

All material to be marked for shipment "B.C. 224"

GOVERNMENT OF BRITISH COLUMBIA

P.W. 224

DEPARTMENT OF PUBLIC WORKS

BILL OF MATERIALS FOR BRIDGE OVER RIVER

BRIDGE NO. 100 - BRIDGE OVER RIVER

Bill No. 3  
 Date Aug. 20, 1926.  
 Drawn by J.E.S.  
 Checked by S.E.S.  
 Approved by J.P.

ITEM NO.	QTY.	LENGTH	DESCRIPTION	Weight lbs.	Total weight lbs.
10	100	1 1/2"	1 1/2" Reinforced Iron Pipe.		
4	100		Reinforcing Triple Bar Reinforcement Size 3 complete with wrenth, bolts & nuts.		
1	100	10'	10' dia. short support, built to plans below.		
2	100	10'	10' dia. " " " " " "		

GOVERNMENT OF BRITISH COLUMBIA

DEPARTMENT OF PUBLIC WORKS

BILL OF CONCRETE MATERIALS FOR SAVER'S CROSS BRIDGE

WILEY ST. CO. BRIDGE - PRINCEGEORGE BRIDGE

FORM NO.

REV. 6  
REV. FEB. 10, 1965  
REV. 1964  
REV. 5.8.53  
REVISED BY

QTY.	UNIT	DESCRIPTION	Quantity CUMYD	Unit Cu. Yds	Overall Cu. Yds.
<b>CLASS "A" CONCRETE</b>					
		STRUCTURE 2.5 Cu. yds.			
		OPEN 10.1 Cu. yds.			
		TOTAL CLASS "A" 12.6 Cu. yds.	125	19	19
<b>CLASS "B" CONCRETE</b>					
		STRUCTURE 120.4 Cu. yds.	1142	100	146
		<b>TOTALS</b>	<b>1267</b>	<b>119</b>	<b>165</b>

DEPARTMENT OF HIGHWAYS  
BRIDGE ENGINEER'S OFFICE

SCHEDULE OF MATERIAL

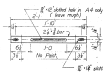
For CANYON CREEK BRIDGE  
SOUTHERN TRANS. PROV. HWY.  
WALL DISTRICT

Scale: 1/4" = 1'-0"  
Drawing No.: 214-1  
Contract No.: 214-1  
Date: Aug. 1954  
Checked by: J.R.  
Date: Dec. 2, 1954

ITEM	QUANTITY	DESCRIPTION	ILL. NUMBER	UNIT	PRICE
<b>SUBSTRUCTURE</b>					
1	200 cu	Cement			
2	2 gal.	Air reducing agent			
3	1 cu ft	Anchor bolt assemblies	214-A-1	167	
4	1 cu ft	Dark cement			
5	2 cu ft	Gravel			
6	4 cu ft	Gravel			
Note: Substructure reinforcing included in steel reinforcement Bill of Materials					
<b>SUBSTRUCTURE</b>					
7	1 cu ft	Shredded and 3/4" long, broken & clean, broken & clean	214-2	43.00	
8	1 cu ft	Green Anchors	214-3	145	
9	2 gal.	Red Lead Alloy (20000)			
10	24 cu	Aluminum Bolt (20000)			
11	60 gal.	Plastic Water Proofing			
12	1 gal.	Green (Alkyd) (20000)			
13	2 gal.	Red Lead Alloy (20000)			
14	1 gal.	Red Lead Alloy (20000) (20000)			
<b>DECK</b>					
15	100 cu ft	Cement, high early strength			
16	1 cu ft	Reinforcing steel	11	26.50	26.50
17	1 gal.	Air reducing agent			
18	24 cu ft	Gravel			
19	25 cu ft	3-3 Paved and put side			



ANCHOR M1 A1  
4 - 2 1/2" dia  
at 5.7' spac



ANCHOR M1 A3  
1-0" dia  
at 5.7' spac  
@ - 18" dia, 2" dia  
@ - 18" dia, 2" dia  
(flush smooth)



ANCHOR M1 A2  
4 - 2 1/2" dia  
at 5.7' spac



Anchor M1 A4

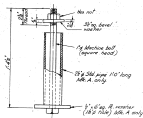
Note:  
Paint and shop coat, and  
blast clean before used  
afterward

GOVT. OF BRITISH COLUMBIA, DEPT. OF HIGHWAYS  
BRIDGE ENGINEER'S OFFICE

WALL DISTRICT  
CANYON CREEK BRIDGE  
BANK BAND ANCHORS

SK

214-1



4 - Spaced M1 A (see above) with washers  
12 - Spaced M1 B (similar except no nut) with washers

NOTE:  
Assemblies not to be painted  
after installation (M1 B)

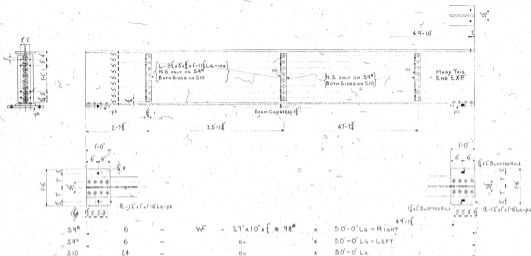
Scale: 3/4" = 1'-0"

GOVT. OF BRITISH COLUMBIA, DEPT. OF HIGHWAYS  
BRIDGE ENGINEER'S OFFICE

WALL DISTRICT  
CANYON CREEK BRIDGE  
ANCHOR BOLT ASSEMBLIES

SK

214-1



NOTE: SEE DRAWING FOR DETAILS.

FOR SHOPPING DRAW

CONTRACT	No. of Beams	Make For
V1898	1	54" M-16.6
	1	54" M-26.6
	4	50" M-26.6
	1	54" M-25.5
	1	54" M-25.5
	4	50" M-25.5
	1	54" M-25.4
	1	50" M-27.4
	1	54" M-26.5
	1	54" M-26.5
	6	50" M-25.5
V1844	1	54" M-26.0
	1	54" M-26.0
	6	50" M-26.0
	4	54" M-25.5

REVISED BY: [Signature]  
 OPEN HOLE: [Signature]  
 PAINT ONE COAT RED LEAD

PURCHASE ORD. NO. A 10713  
 REV. COST OVER NO. 1136-5-Bridge

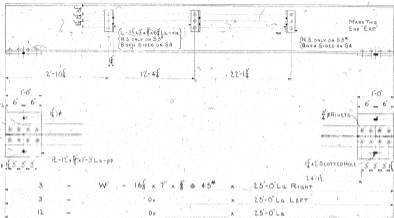
**DOWINION BRIDGE CO., LIMITED**  
 WINDSOR, S.C.

PROPERTY OF: Dept. of Public Works, Town of S.C.  
 PROJECT: [Blank]  
 DESCRIPTION: [Blank]  
 CONTRACT NO.: [Blank]  
 DATE: [Blank]

SCALE: 1" = 4'-0"  
 APPROVED: [Signature]  
 DATE: [Blank]

DEPT. [Blank] CONT. V 1815

87874



S3 <sup>o</sup>	3	-	WF	-	16 1/2	x	8	x	45	x	25'-0" La RIGHT
S3 <sup>o</sup>	3	-									x 25'-0" La LEFT
S4	12	-									x 25'-0" La

Note: See Material Book For Symbols

**For Quantity Only**

No. of Main For Beams	Quantity
1	S3 <sup>o</sup> M-LD
1	S3 <sup>o</sup> M-LD
4	S4 M-LD
1	S3 <sup>o</sup> M-ES
1	S3 <sup>o</sup> M-ES
4	S4 M-ES
1	S3 <sup>o</sup> M-BS
1	S3 <sup>o</sup> M-BS
4	S4 M-BS

Note: See CONTRACT V1898 Draw No. 1 for DETAILS  
or 1 1/2" x 1/2" x 1/2" x 1/2" Beams Ready For Beams  
At M-3305

Purchase Order No. A10974  
Rev. Cont. Des. No. 11381

18771

**DOMINION BRIDGE CO., LIMITED**  
MEMBERS, L.L.

RESPECTFULLY OF PUBLIC WORKS DEPT. OF B.C.  
PROVINCE OF BRITISH COLUMBIA  
SPECIALIST CONTRACTORS-PROVINCE OF BRITISH COLUMBIA  
SPECIALIST CONTRACTORS-PROVINCE OF BRITISH COLUMBIA

DATE: \_\_\_\_\_

BY: \_\_\_\_\_

FOR: \_\_\_\_\_

PROJECT: \_\_\_\_\_

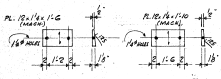
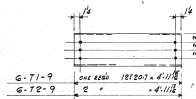
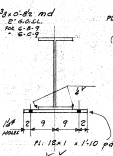
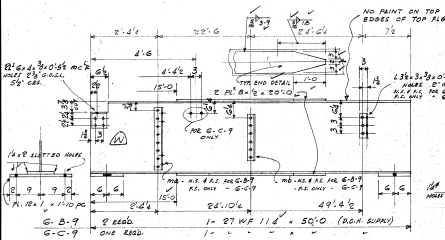
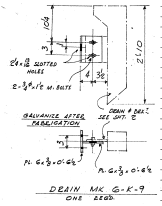
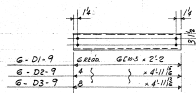
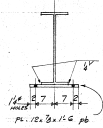
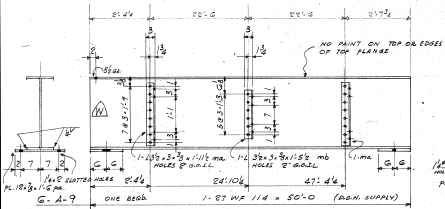
NO. \_\_\_\_\_

THIS DRAWING IS THE PROPERTY OF  
DOMINION BRIDGE CO., LIMITED  
AND SHOULD BE KEPT IN THE  
SAFE OF THE COMPANY'S HEAD OFFICE

DEPT. \_\_\_\_\_ CONF. V1899

1





- SHIP: (ERECTOR BILTS)
- 100 - 3/8" x 1/2" M. BOLTS
  - 35 - " x " "
  - 10 - " x " "
  - 4 - 1/4" x 1/2" M. BOLTS, HEX NUT, W/ FLAT WASHER, # 8 1/2" x 1/4" WASHER & 2 1/2" x 1/2" ANGLE SLIPER.
  - 12 - 1" x 1/2" M. BOLT.

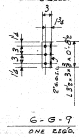
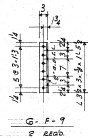
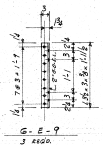
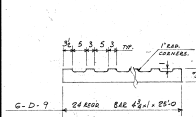
OFFICE COPY

OK *date* 1/6/63

APPROVED

T. J. E. B. / M. T. 62

STEEL FABRICATOR, INC. OF MICHIGAN



- NOTES:
1. SHOP CONN. 3/8" BILTS
  2. OPEN HOLES 3/4" UNLESS NOTED.
  3. PAINT ONE COAT TO SPEC. EXCEPT PAINTING SURFACES HAS NOTED.
  4. LABEL ALL MACH. SURFACES.
  5. UNDESIGNS ALL STEEL

CUSTOMER	D. J. MANNING
CANYON CREEK BRIDGE	
STEELWORK	
SCALE	
W.O. NO.	6260
DRAWN BY	
APPRO. BY	
DATE	MAY 2, 1963

**GILCHRIST**

ENGINEERING AND SALES LTD.

VANCOUVER, B.C.

"For All Your Fabricated Steel Requirements"

SHEET 9 OF 22

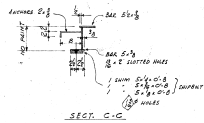
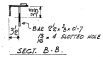
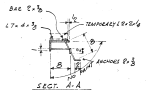
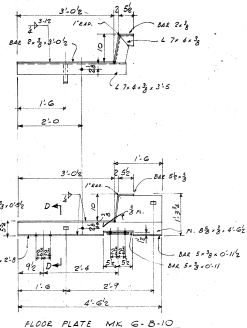
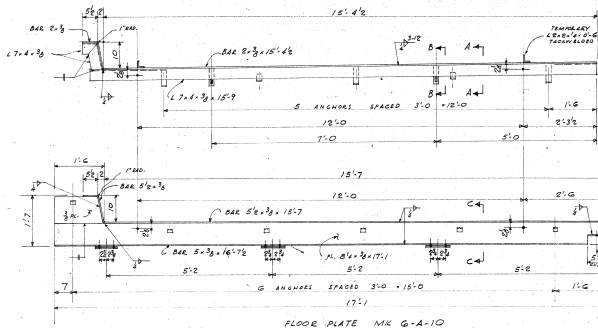
DRAWING No. 48664

63-121

G-8-9 G-10-9 CHANGED TO INT. RIB. PLE. JUNE 1963.

REVISED TO APPROVED PLAN MAY 21/63.

QUANTITY	MARK	DESCRIPTION	COMP.
----------	------	-------------	-------

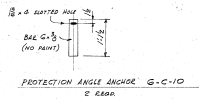
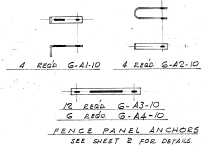


APPROVED  
T.A.K.H.A./M.F. 63  
STEEL ENGINEER, 1000, 10/10/63

OFFICE COPY

OK *W.B.* June 17/63

SEE NOTES ON SHEET 9.



CUSTOMER <u>D.J. MANNING</u>	
CANTON CREEK BRIDGE	
STEELWORK	
SCALE	
W.D. No. 5060	
DRAWN BY <u>L.H.</u>	
APPRO. BY	
DATE <u>MAY 2, 1963.</u>	
<b>GILCHRIST</b> ENGINEERING AND SALES LTD. VANCOUVER, B.C.	
SHEET 10 of 12	98665
DRAWING No. <u>63-121</u>	

WIRE ADDED TO G-B10 JOHN H/63  
REVISED TO APPROVED PLAN MAY 21/63