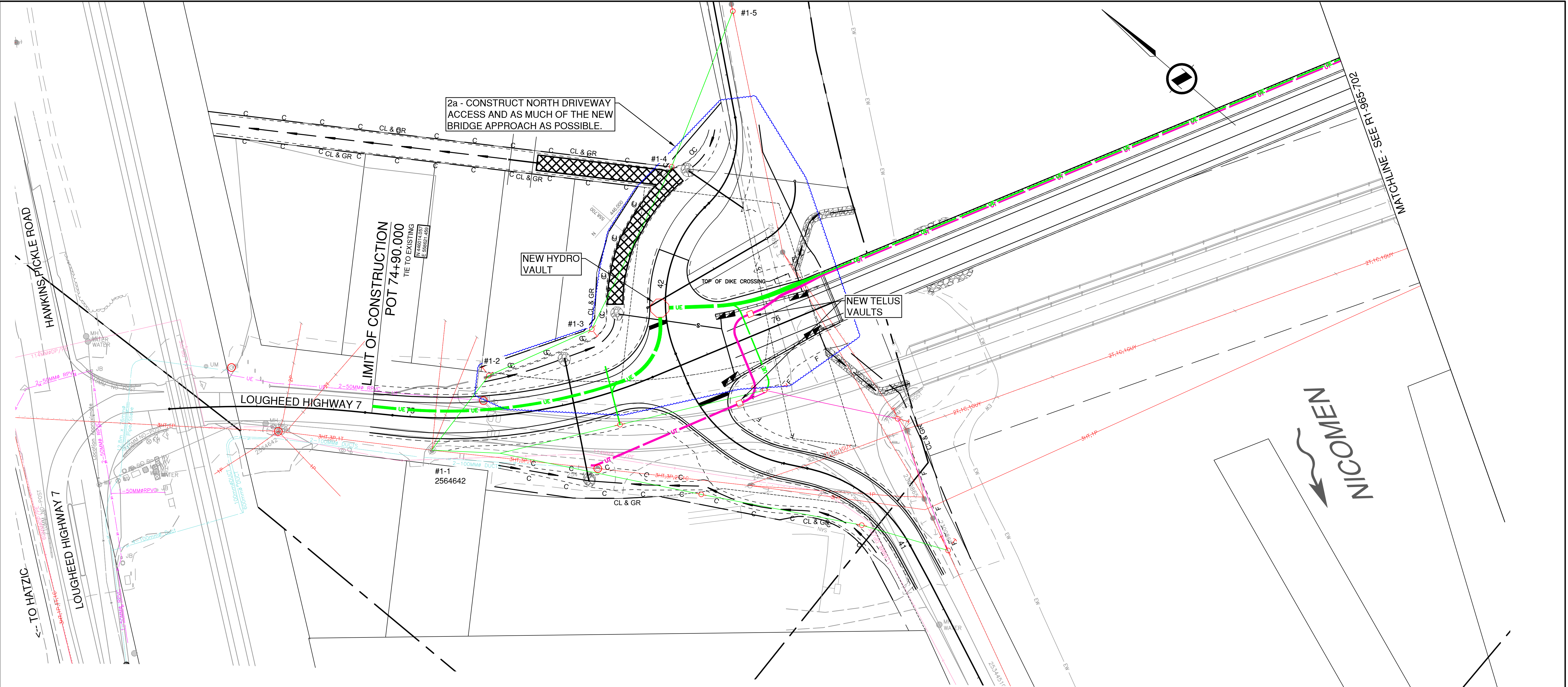


PLOT DATE: 2023/09/05 X:\2241\2241-02757-00 Mod1 - H7 Nicomen Slough 06596 Dewatering Bridge Replacement\1.0.0 DRAWINGS\10.3 Civil\DrawingProduction\700 SERIES Phase 2a.dwg



2a - CONSTRUCT NORTH DRIVEWAY ACCESS AND AS MUCH OF THE NEW BRIDGE APPROACH AS POSSIBLE.

LIMIT OF CONSTRUCTION  
POT 74+90.000  
TIE TO EXISTING  
E 44807.135  
E 55927.455

NEW HYDRO VAULT

NEW TELUS VAULTS

LOUGHEED HIGHWAY 7

NICOMEN

FOR PLANS  
SEE DRAWING R1-965-101

FOR PROFILES  
SEE DRAWING R1-965-201 TO 206

FOR TYPICAL SECTIONS  
SEE DRAWING R1-965-301 TO 302

FOR DETAILS  
SEE DRAWING R1-965-351 TO 353

FOR GEOMETRICS & LANING  
SEE DRAWING R1-965-401

FOR SIGNAGE & PAVEMENT MARKINGS  
SEE DRAWING R1-965-601

FOR STORM  
SEE DRAWING R1-965-751 TO 752

DESIGN SPEED	
L100	50 km/h
L250	N/A
L400	50 km/h

**LEGEND**

- EXISTING OVERHEAD UTILITIES
- PROPOSED OVERHEAD UTILITIES
- PROPOSED OVERHEAD POWER
- UT EXISTING UNDERGROUND UTILITIES
- UE EXISTING UNDERGROUND POWER
- C EXISTING UNDERGROUND GAS
- UT PROPOSED UNDERGROUND UTILITIES
- UE PROPOSED UNDERGROUND POWER
- C PROPOSED GAS
- PROPOSED UTILITY POLE
- + PROPOSED ANCHOR



Suite 500  
3960 Quadra Street  
Victoria BC  
Canada V8X 4A3  
T 250 370 9221

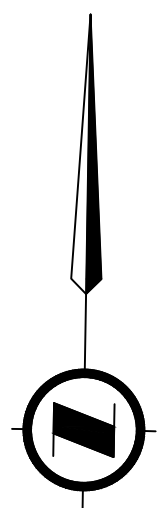
SCALE	0 5 1:500 25m	CAD FILENAME	700 SERIES PHASE 2A
REV	DATE	REVISIONS	SIGNATURE
A	2023-09-06	UTILITY UPDATES	ETW

BRITISH COLUMBIA  
MINISTRY OF TRANSPORTATION AND INFRASTRUCTURE  
SOUTH COAST REGION  
HIGHWAY ENGINEERING AND GEOMATICS

DESIGNED	S. BOON	DATE	2020-07-03
QUALITY CONTROL	S. BOON	DATE	2020-07-13
QUALITY ASSURANCE	L. PELTZ	DATE	2020-07-15
DRAWN	D. WENTLAND	DATE	2020-07-10

DRAINAGE AND UTILITIES - PHASE 2a			
DEWDNEY BRIDGE NO. 00596 LOUGHEED HIGHWAY NO. 7 STA 74+90 - 77+60			
FILE NUMBER	PROJECT NUMBER	REG	DRAWING NUMBER
	12652-0001	1	R1-965-701-2a
			REV
			A

PLOT DATE: 2023/09/05 X:\2241\2241-02757-00 Mod1 - H7 Nicomes Slough 00596 Dewdney Bridge Replacement\1.0.0 DRAWINGS\10.3 Civil\DrawingProduction\700\_Series\_Phase 2a.dwg



MATCHLINE - SEE R1-965-701  
 ← TO HATZIC

L100  
 POT 78+40.269 =  
 L550  
 POT 51+64.622  
 N 445841.424  
 E 558922.909

2a - BULD THE BRIDGE ABUTMENT AND AS MUCH OF THE APPROACH AS POSSIBLE, INCLUDING THE DRAINAGE AND THE ACCESSES TO THE DIKE AND FARM

NEW POLES

REMOVE POLES

CHECK SHAW SERVICE BOX FOR POSSIBLE REGRADING

LIMIT OF CONSTRUCTION  
 POS 80+95.000  
 TIE TO EXISTING  
 N 558910.03  
 E 558910.03

CHECK THIS POLE AND ANCHOR FOR CONFLICTS

LOUGHEED HIGHWAY 7 TO DEROCHE -->

LEGEND

- EXISTING OVERHEAD UTILITIES
- PROPOSED OVERHEAD UTILITIES
- PROPOSED OVERHEAD POWER
- EXISTING UNDERGROUND UTILITIES
- EXISTING UNDERGROUND POWER
- EXISTING UNDERGROUND GAS
- PROPOSED UNDERGROUND UTILITIES
- PROPOSED UNDERGROUND POWER
- PROPOSED GAS
- PROPOSED UTILITY POLE
- PROPOSED ANCHOR



Suite 500  
 3960 Quadra Street  
 Victoria BC  
 Canada V8X 4A3  
 T 250 370 9221

SCALE		0 5 1:500 25m	
CAD FILENAME 700 SERIES PHASE 2A		DATE 2023-09-05	
REV	DATE	REVISIONS	SIGNATURE
A	2023-09-06	UTILITY UPDATES	ETW

BRITISH COLUMBIA  
 MINISTRY OF TRANSPORTATION AND INFRASTRUCTURE  
 SOUTH COAST REGION  
 HIGHWAY ENGINEERING AND GEOMATICS

DESIGNED S. BOON DATE 2020-07-03  
 QUALITY CONTROL S. BOON DATE 2020-07-13  
 QUALITY ASSURANCE L. PELTZ DATE 2020-07-15  
 DRAWN D. WENTLAND DATE 2020-07-10

SENIOR DESIGNER  
 DATE

DRAINAGE AND UTILITIES - PHASE 2a			
DEWDNEY BRIDGE NO. 00596 LOUGHEED HIGHWAY NO. 7 STA 77+60 - 80+95			
FILE NUMBER	PROJECT NUMBER	REG	DRAWING NUMBER
12652-0001	1	1	R1-965-702-2a