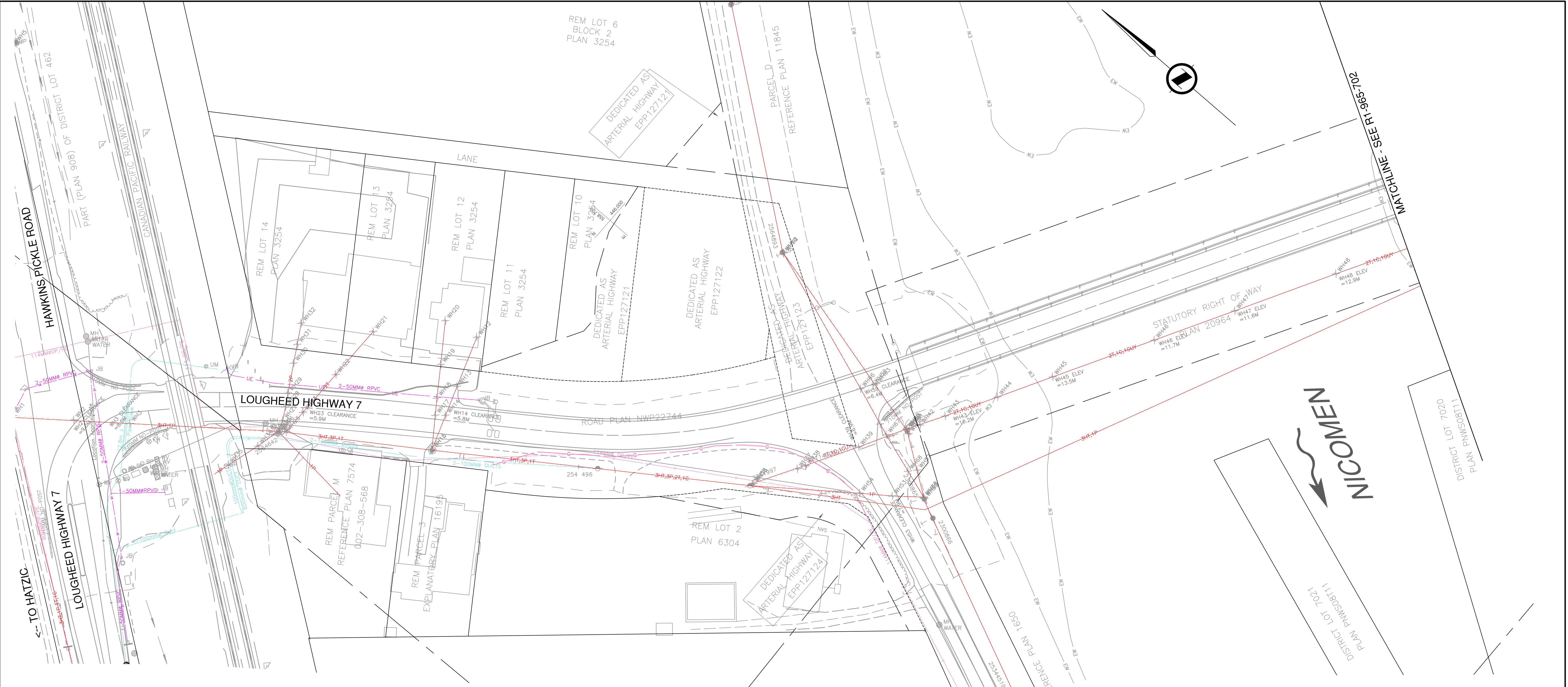


PLOT DATE: 2023/04/21 X:\2241\2241-02757-00 Mod1 - H7 Nicomen Slough 00596 Dewdney Bridge Replacement\10.0 DRAWINGS\10.3 Civil\DrawingProduction\700_DrainageUtilities\700_SERIES Phase 0.dwg



FOR PLANS
SEE DRAWING R1-965-101

FOR PROFILES
SEE DRAWING R1-965-201 TO 206

FOR TYPICAL SECTIONS
SEE DRAWING R1-965-301 TO 302

FOR DETAILS
SEE DRAWING R1-965-351 TO 353

FOR GEOMETRICS & LANING
SEE DRAWING R1-965-401

FOR SIGNAGE & PAVEMENT MARKINGS
SEE DRAWING R1-965-601

FOR STORM
SEE DRAWING R1-965-751 TO 752

DESIGN SPEED	
L100	50 km/h
L250	N/A
L400	50 km/h

LEGEND

- EXISTING OVERHEAD UTILITIES
- EXISTING UNDERGROUND UTILITIES
- EXISTING UNDERGROUND POWER
- EXISTING UNDERGROUND GAS



Suite 500
3960 Quadra Street
Victoria BC
Canada V8X 4A3
T 250 370 9221

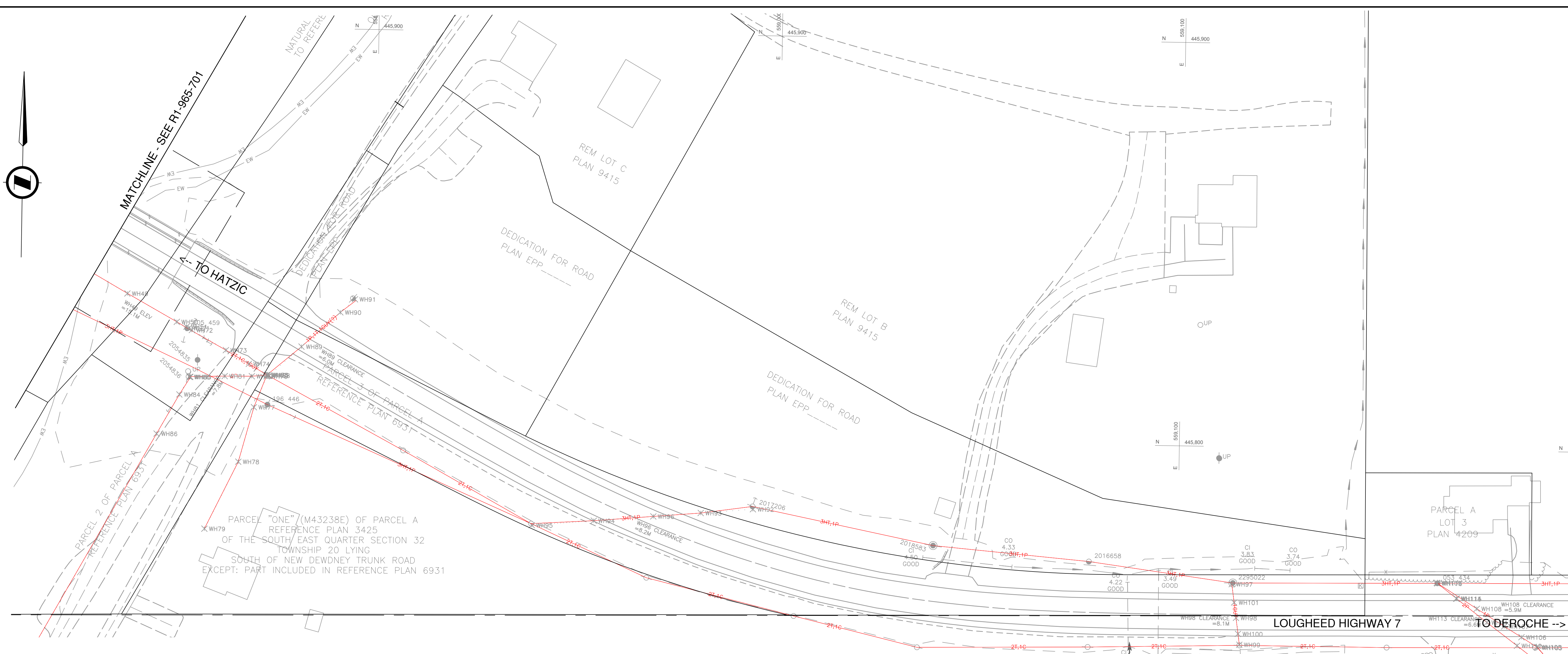
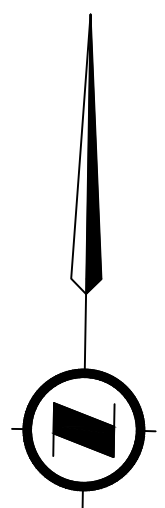
SCALE		0 5 1:500 25m	
CAD FILENAME		700_SERIES PHASE 0	
DATE		2023-04-21	
REV	DATE	REVISIONS	SIGNATURE

MINISTRY OF TRANSPORTATION AND INFRASTRUCTURE
SOUTH COAST REGION
HIGHWAY ENGINEERING AND GEOMATICS

DESIGNED	S. BOON	DATE	2020-07-03
QUALITY CONTROL	S. BOON	DATE	2020-07-13
QUALITY ASSURANCE	L. PELTZ	DATE	2020-07-15
DRAWN	D. WENTLAND	DATE	2020-07-10

DRAINAGE AND UTILITIES - EXISTING CONDITIONS			
DEWDNEY BRIDGE NO. 00596 LOUGHEED HIGHWAY NO. 7 STA 74+90 - 77+60			
FILE NUMBER	PROJECT NUMBER	REG	DRAWING NUMBER
	12652-0001	1	R1-965-701-0

PLOT DATE: 2023/04/21 X:\2241\2241-02757-00 ModI - H7 Nicomen Slough 00596 Dewdney Bridge Replacement\1.0.0 DRAWINGS\10.3 Civil\DrawingProduction\700_DrainageUtilities\700 SERIES Phase 0.dwg



FOR PLANS
SEE DRAWING R1-965-102

FOR PROFILES
SEE DRAWING R1-965-201 TO 206

FOR TYPICAL SECTIONS
SEE DRAWING R1-965-301 TO 303

FOR DETAILS
SEE DRAWING R1-965-351 TO 352

FOR GEOMETRICS & LANING
SEE DRAWING R1-965-402

FOR SIGNAGE & PAVEMENT MARKINGS
SEE DRAWING R1-965-602

FOR STORM
SEE DRAWING R1-965-751 TO 752

LEGEND

- EXISTING OVERHEAD UTILITIES
- EXISTING UNDERGROUND UTILITIES
- EXISTING UNDERGROUND POWER
- o- EXISTING UNDERGROUND GAS

DESIGN SPEED	
L100	50 km/h
L500	50 km/h
L550	N/A



Suite 500
3960 Quadra Street
Victoria BC
Canada V8X 4A3
T 250 370 9221

SCALE 0 5 1:500 25m		CAD FILENAME 700 SERIES PHASE 0	
DATE 2023-04-21			
REV	DATE	REVISIONS	SIGNATURE

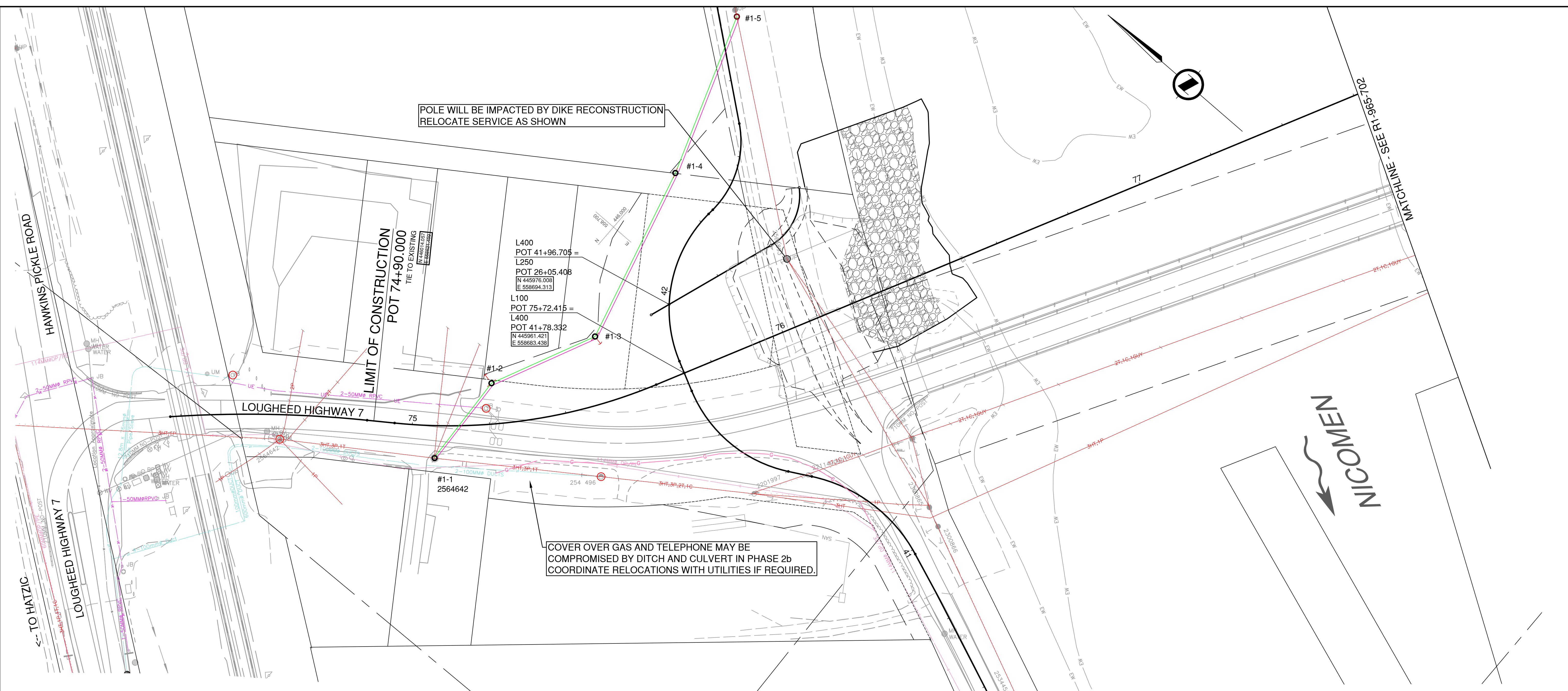
BRITISH COLUMBIA
MINISTRY OF TRANSPORTATION AND INFRASTRUCTURE
SOUTH COAST REGION
HIGHWAY ENGINEERING AND GEOMATICS

DESIGNED S. BOON DATE 2020-07-03
 QUALITY CONTROL S. BOON DATE 2020-07-13
 QUALITY ASSURANCE L. PELTZ DATE 2020-07-15
 DRAWN D. WENTLAND DATE 2020-07-10

SENIOR DESIGNER _____
DATE _____

DRAINAGE AND UTILITIES - EXISTING CONDITIONS				
DEWDNEY BRIDGE NO. 00596 LOUGHEED HIGHWAY NO. 7 STA 77+60 - 80+95				
FILE NUMBER	PROJECT NUMBER	REG	DRAWING NUMBER	REV
	12652-0001	1	R1-965-702-0	

PLOT DATE: 2023/04/21 X:\2241\2241-02757-00 Mod1 - H7 Nicomen Slough 00596 Dredney Bridge Replacement\10.0 DRAWINGS\10.3 Civil\DrawingProduction\700_DrainageUtilities\700_SERIES Phase 1.dwg



FOR PROFILES
SEE DRAWING R1-965-201 TO 206

FOR TYPICAL SECTIONS
SEE DRAWING R1-965-301 TO 302

FOR DETAILS
SEE DRAWING R1-965-351 TO 353

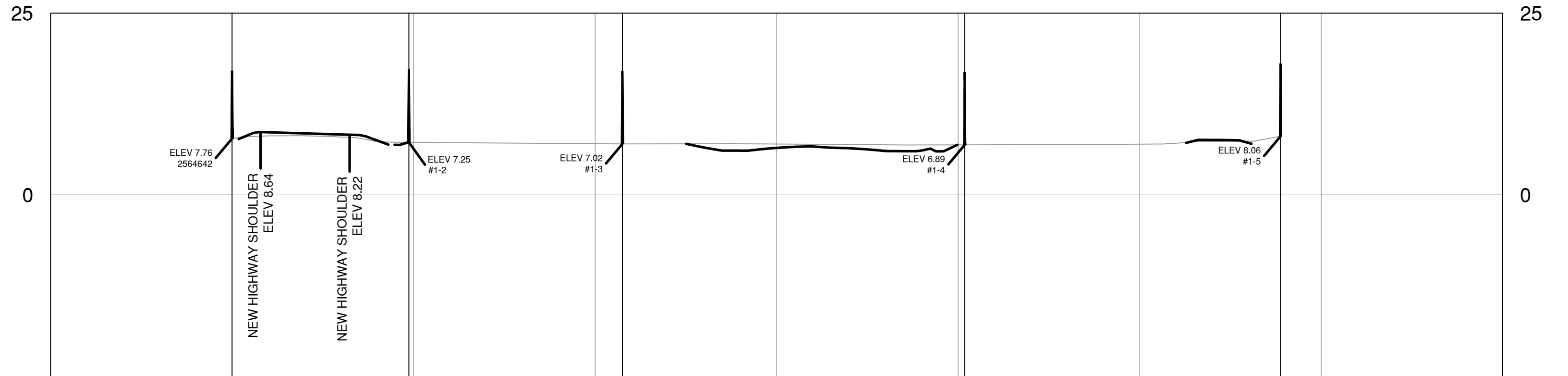
FOR GEOMETRICS & LANING
SEE DRAWING R1-965-401

FOR SIGNAGE & PAVEMENT MARKINGS
SEE DRAWING R1-965-601

FOR STORM
SEE DRAWING R1-965-751 TO 752

DESIGN SPEED	
L100	50 km/h
L250	N/A
L400	50 km/h

LEGEND	
	EXISTING OVERHEAD UTILITIES
	PROPOSED OVERHEAD UTILITIES
	PROPOSED OVERHEAD POWER
	EXISTING UNDERGROUND UTILITIES
	EXISTING UNDERGROUND POWER
	EXISTING UNDERGROUND GAS
	PROPOSED UNDERGROUND UTILITIES
	PROPOSED UNDERGROUND POWER
	PROPOSED GAS
	PROPOSED UTILITY POLE
	PROPOSED ANCHOR



Suite 500
3960 Quadra Street
Victoria BC
Canada V8X 4A3
T 250 370 9221

REV	DATE	REVISIONS	SIGNATURE

SCALE 0 5 1:500 25m

CAD FILENAME 700_SERIES PHASE 1
DATE 2023-04-21

BRITISH COLUMBIA

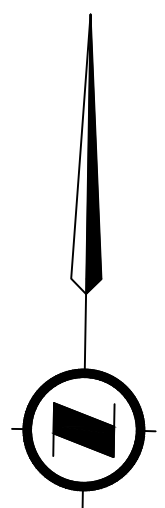
MINISTRY OF TRANSPORTATION AND INFRASTRUCTURE
SOUTH COAST REGION
HIGHWAY ENGINEERING AND GEOMATICS

DESIGNED S. BOON DATE 2020-07-03
QUALITY CONTROL S. BOON DATE 2020-07-13
QUALITY ASSURANCE L. PELTZ DATE 2020-07-15
DRAWN D. WENTLAND DATE 2020-07-10

SENIOR DESIGNER _____
DATE _____

DRAINAGE AND UTILITIES - PHASE 1			
DEWDNEY BRIDGE NO. 00596 LOUGHEED HIGHWAY NO. 7 STA 74+90 - 77+60			
FILE NUMBER	PROJECT NUMBER	REG	DRAWING NUMBER
12652-0001	1	1	R1-965-701-1

PLOT DATE: 2023/04/21 X:\2241\2241-02757-00 MoTI - H7 Nicomen Slough 00596 Dewatering Bridge Replacement\1.0.0 DRAWINGS\10.3 Civil\DrawingProduction\700_Series_Phase 1.dwg



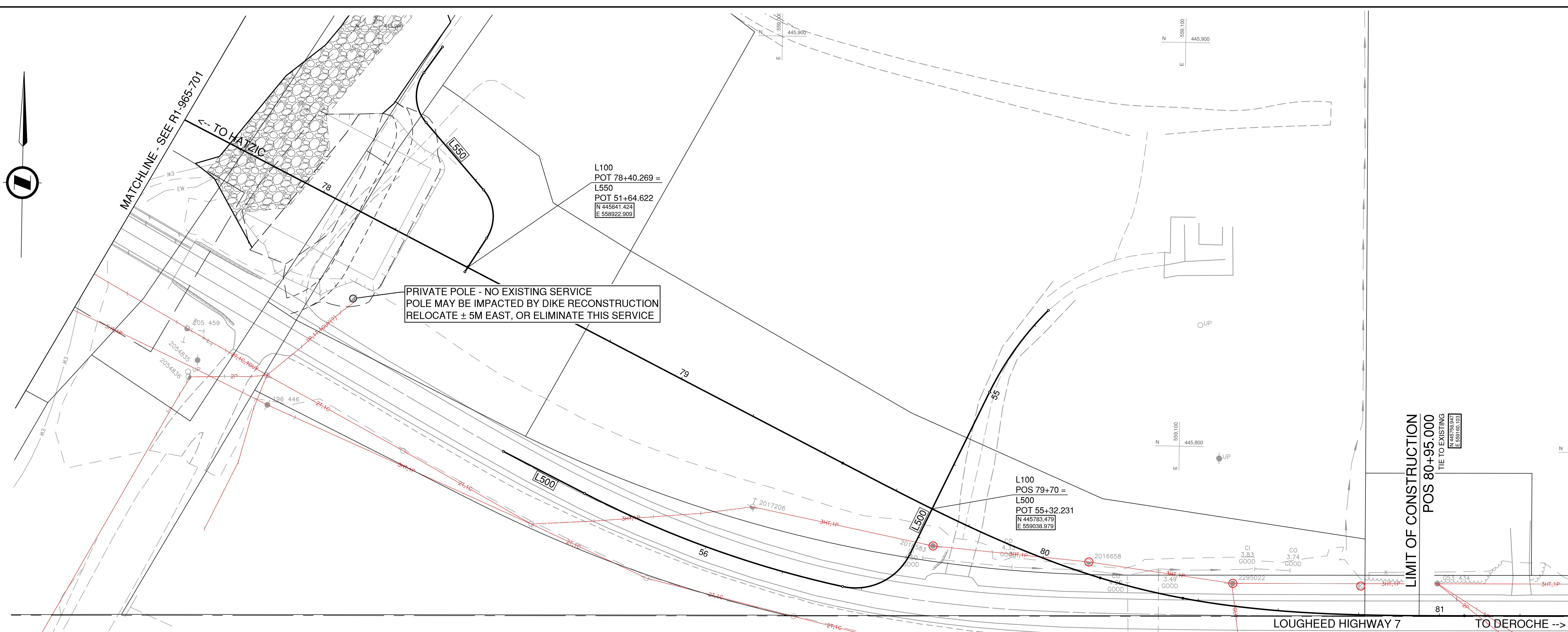
MATCHLINE - SEE R1-965-701
← TO HATZIC

L100
POT 78+40.269 =
L550
POT 51+64.622
N 445841.424
E 558922.909

PRIVATE POLE - NO EXISTING SERVICE
POLE MAY BE IMPACTED BY DIKE RECONSTRUCTION
RELOCATE ± 5M EAST, OR ELIMINATE THIS SERVICE

L100
POS 79+70 =
L500
POT 55+32.231
N 445783.479
E 559038.979

LIMIT OF CONSTRUCTION
POS 80+95.000
TIE TO EXISTING
POT 559100.103



LEGEND

- EXISTING OVERHEAD UTILITIES
- PROPOSED OVERHEAD UTILITIES
- PROPOSED OVERHEAD POWER
- UT EXISTING UNDERGROUND UTILITIES
- UE EXISTING UNDERGROUND POWER
- G EXISTING UNDERGROUND GAS
- UT PROPOSED UNDERGROUND UTILITIES
- UE PROPOSED UNDERGROUND POWER
- G PROPOSED GAS
- PROPOSED UTILITY POLE
- ↗ PROPOSED ANCHOR

DESIGN SPEED	
L100	50 km/h
L500	50 km/h
L550	N/A

FOR PLANS
SEE DRAWING R1-965-102

FOR PROFILES
SEE DRAWING R1-965-201 TO 206

FOR TYPICAL SECTIONS
SEE DRAWING R1-965-301 TO 303

FOR DETAILS
SEE DRAWING R1-965-351 TO 353

FOR GEOMETRICS & LANING
SEE DRAWING R1-965-402

FOR SIGNAGE & PAVEMENT MARKINGS
SEE DRAWING R1-965-602

FOR STORM
SEE DRAWING R1-965-751 TO 752



Suite 500
3960 Quadra Street
Victoria BC
Canada V8X 4A3
T 250 370 9221

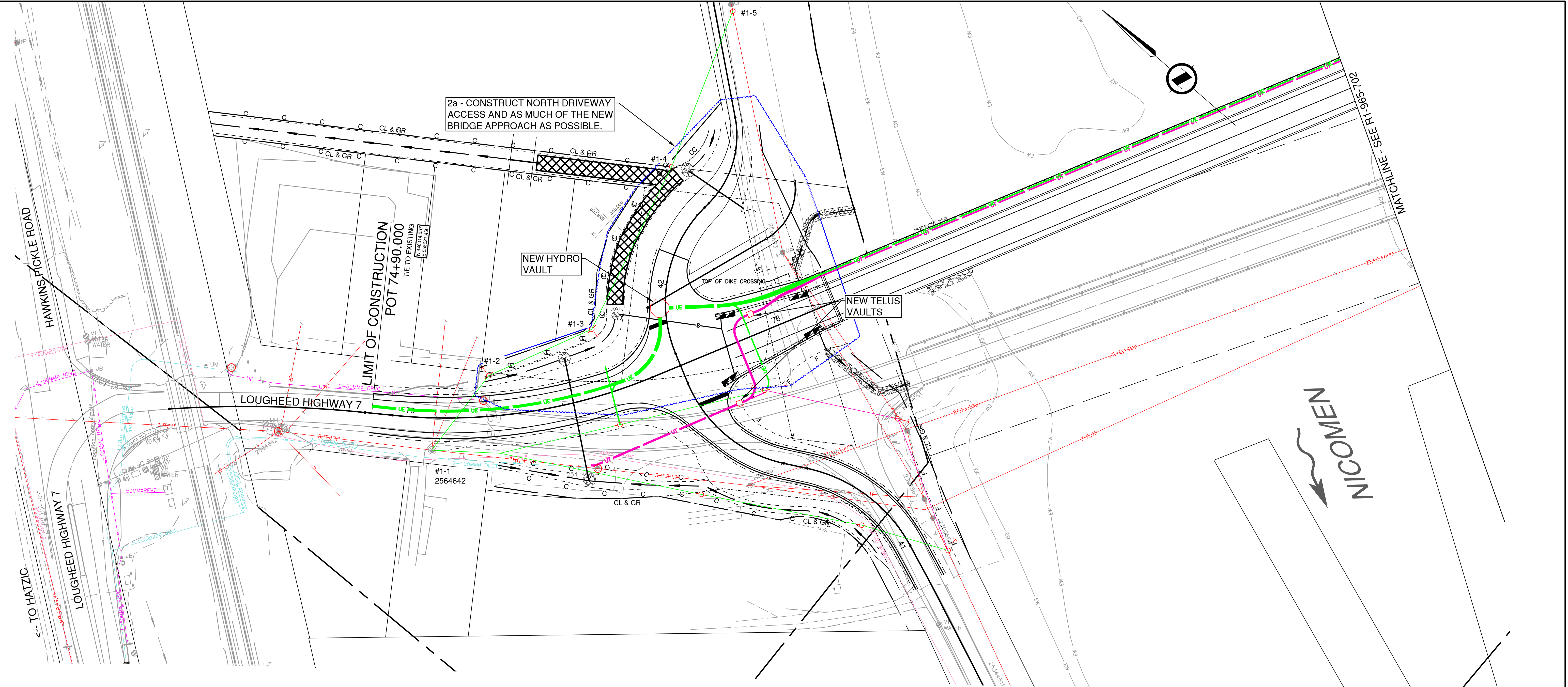
SCALE		0 5 1:500 25m	
CAD FILENAME		700 SERIES PHASE 1	
DATE		2023-04-21	
REV	DATE	REVISIONS	SIGNATURE

MINISTRY OF TRANSPORTATION AND INFRASTRUCTURE
SOUTH COAST REGION
HIGHWAY ENGINEERING AND GEOMATICS

DESIGNED	S. BOON	DATE	2020-07-03
QUALITY CONTROL	S. BOON	DATE	2020-07-13
QUALITY ASSURANCE	L. PELTZ	DATE	2020-07-15
DRAWN	D. WENTLAND	DATE	2020-07-10

DRAINAGE AND UTILITIES - PHASE 1				
DEWDNEY BRIDGE NO. 00596 LOUGHEED HIGHWAY NO. 7 STA 77+60 - 80+95				
FILE NUMBER	PROJECT NUMBER	REG	DRAWING NUMBER	REV
	12652-0001	1	R1-965-702-1	

PLOT DATE: 2023/04/21 X:\2241\2241-02757-00 Mod1 - H7 Nicomen Slough 06596 Dewatering Bridge Replacement\10.0 DRAWINGS\10.3 Civil\DrawingProduction\700 SERIES Phase 2a.dwg



FOR PLANS
SEE DRAWING R1-965-101

FOR PROFILES
SEE DRAWING R1-965-201 TO 206

FOR TYPICAL SECTIONS
SEE DRAWING R1-965-301 TO 302

FOR DETAILS
SEE DRAWING R1-965-351 TO 353

FOR GEOMETRICS & LANING
SEE DRAWING R1-965-401

FOR SIGNAGE & PAVEMENT MARKINGS
SEE DRAWING R1-965-601

FOR STORM
SEE DRAWING R1-965-751 TO 752

DESIGN SPEED	
L100	50 km/h
L250	N/A
L400	50 km/h

LEGEND

- EXISTING OVERHEAD UTILITIES
- PROPOSED OVERHEAD UTILITIES
- PROPOSED OVERHEAD POWER
- EXISTING UNDERGROUND UTILITIES
- EXISTING UNDERGROUND POWER
- EXISTING UNDERGROUND GAS
- PROPOSED UNDERGROUND UTILITIES
- PROPOSED UNDERGROUND POWER
- PROPOSED GAS
- PROPOSED UTILITY POLE
- PROPOSED ANCHOR



Suite 500
3960 Quadra Street
Victoria BC
Canada V8X 4A3
T 250 370 9221

SCALE		CAD FILENAME 700 SERIES PHASE 2A
REV	DATE	REVISIONS

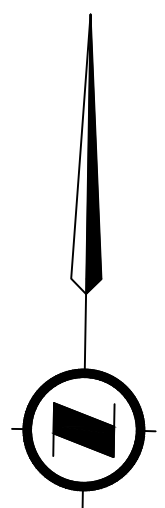
MINISTRY OF TRANSPORTATION AND INFRASTRUCTURE
SOUTH COAST REGION
HIGHWAY ENGINEERING AND GEOMATICS

DESIGNED S. BOON DATE 2020-07-03
 QUALITY CONTROL S. BOON DATE 2020-07-13
 QUALITY ASSURANCE L. PELTZ DATE 2020-07-15
 DRAWN D. WENTLAND DATE 2020-07-10

SENIOR DESIGNER _____
DATE _____

DRAINAGE AND UTILITIES - PHASE 2a			
DEWDNEY BRIDGE NO. 00596 LOUGHEED HIGHWAY NO. 7 STA 74+90 - 77+60			
FILE NUMBER	PROJECT NUMBER	REG	DRAWING NUMBER
	12652-0001	1	R1-965-701-2a

PLOT DATE: 2023/04/21 X:\2241\2241-02757-00 Mod1 - H7 Nicomesa Slough 00596 Dewdney Bridge Replacement\1.0.0 DRAWINGS\10.3 Civil\DrawingProduction\700_Series_Phase 2a.dwg



MATCHLINE - SEE R1-965-701
TO HATZIC

L100
POT 78+40.269 =
L550
POT 51+64.622
N 445841.424
E 558922.909

2a - BULD THE BRIDGE ABUTMENT AND AS MUCH OF THE APPROACH AS POSSIBLE, INCLUDING THE DRAINAGE AND THE ACCESSES TO THE DIKE AND FARM

NEW POLES

REMOVE POLES

CHECK SHAW SERVICE BOX FOR POSSIBLE REGRADING

LIMIT OF CONSTRUCTION
POS 80+95.000
TIE TO EXISTING
N 558910.03
E 558910.03

CHECK THIS POLE AND ANCHOR FOR CONFLICTS

CURRENT TELUS DESIGN IS TO CONNECT TO THESE TWO POLES. CAN BE DONE BUT IT WILL LIKELY HAPPEN LATER IN THE CONSTRUCTION, WHEN THE NEW HIGHWAY IS JOINED TO EXISTING.

LEGEND

- EXISTING OVERHEAD UTILITIES
- PROPOSED OVERHEAD UTILITIES
- PROPOSED OVERHEAD POWER
- EXISTING UNDERGROUND UTILITIES
- EXISTING UNDERGROUND POWER
- EXISTING UNDERGROUND GAS
- PROPOSED UNDERGROUND UTILITIES
- PROPOSED UNDERGROUND POWER
- PROPOSED GAS
- PROPOSED UTILITY POLE
- PROPOSED ANCHOR



Suite 500
3960 Quadra Street
Victoria BC
Canada V8X 4A3
T 250 370 9221

SCALE 0 5 1:500 25m

CAD FILENAME 700 SERIES PHASE 2A
DATE 2023-04-21

REV	DATE	REVISIONS	SIGNATURE

MINISTRY OF TRANSPORTATION AND INFRASTRUCTURE
SOUTH COAST REGION
HIGHWAY ENGINEERING AND GEOMATICS

DESIGNED S. BOON DATE 2020-07-03
QUALITY CONTROL S. BOON DATE 2020-07-13
QUALITY ASSURANCE L. PELTZ DATE 2020-07-15
DRAWN D. WENTLAND DATE 2020-07-10

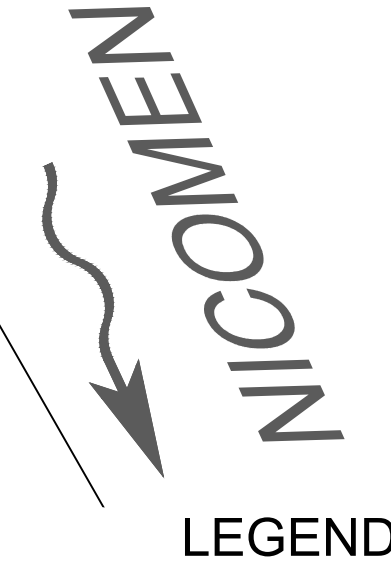
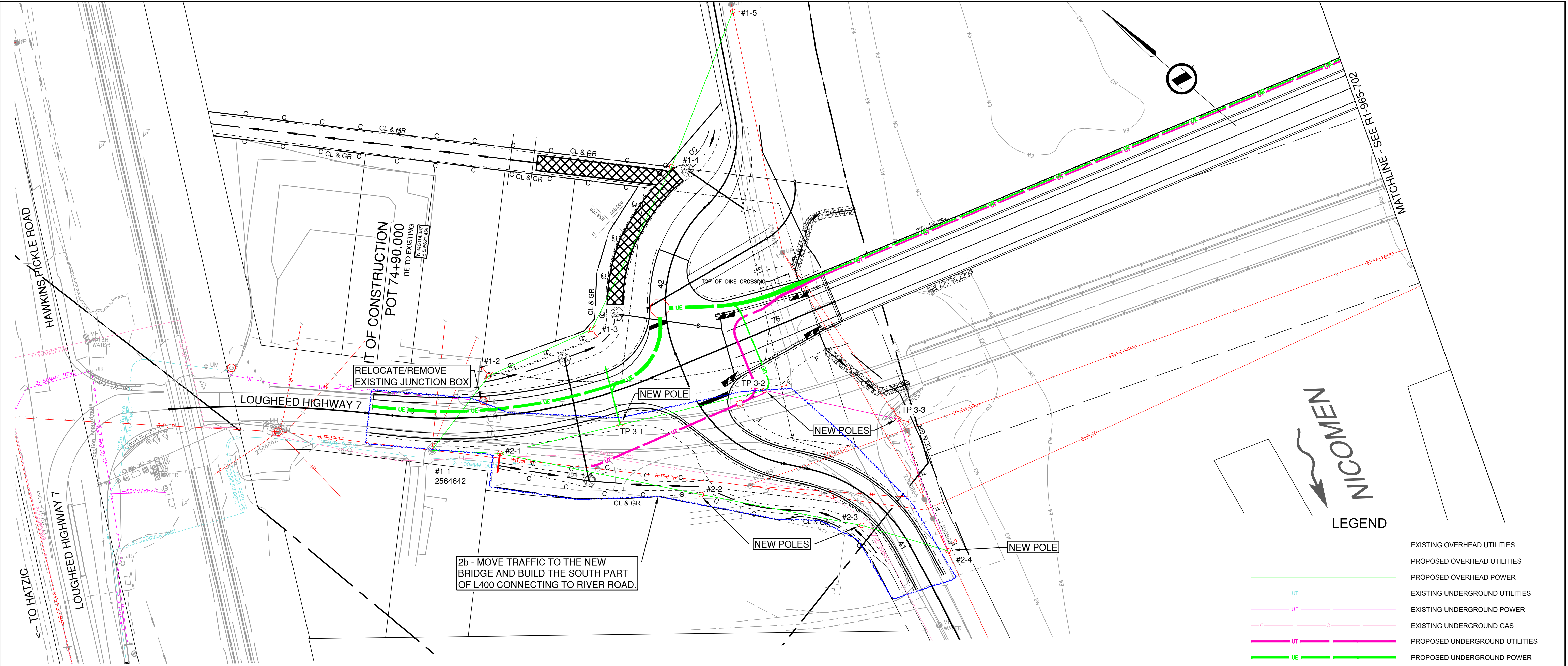
SENIOR DESIGNER _____
DATE _____

DRAINAGE AND UTILITIES - PHASE 2a

DEWDNEY BRIDGE NO. 00596
LOUGHEED HIGHWAY NO. 7
STA 77+60 - 80+95

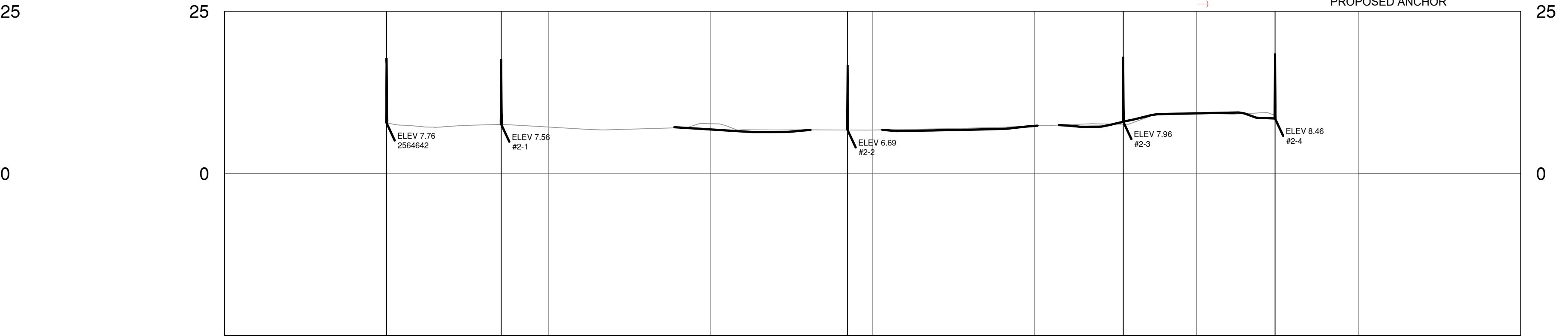
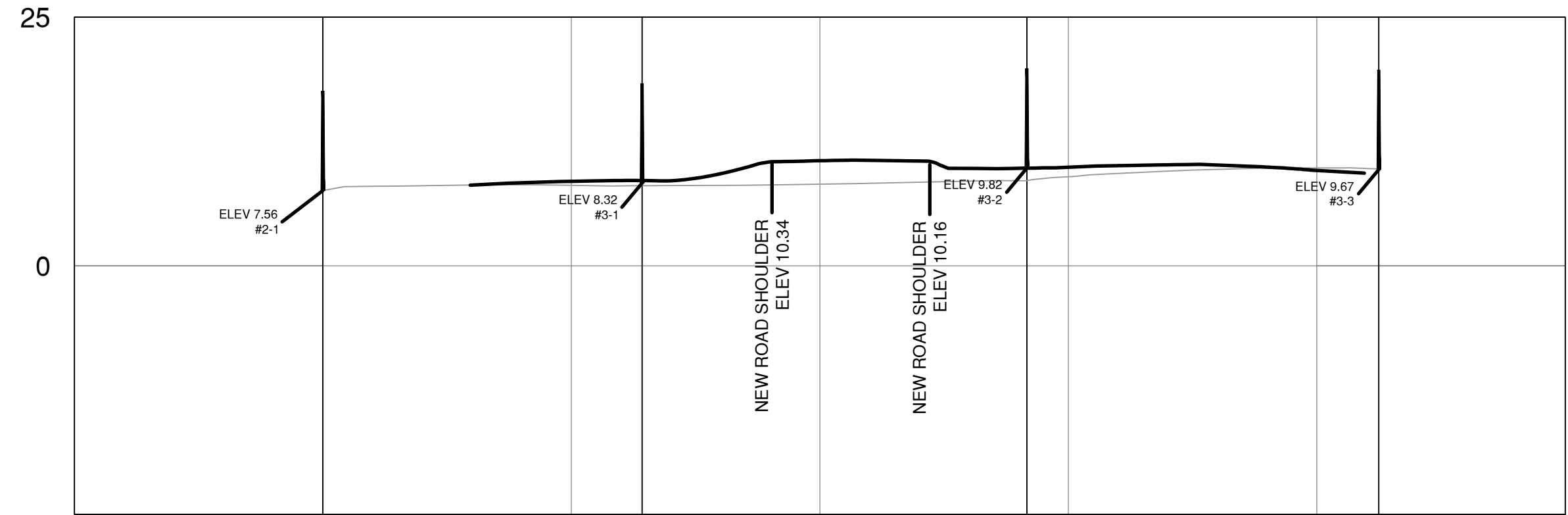
FILE NUMBER	PROJECT NUMBER	REG	DRAWING NUMBER	REV
12652-0001	12652-0001	1	R1-965-702-2a	

PLOT DATE: 2023/04/21 X:\2241\2241-02757-00 ModI - H7 Nicomen Slough Replacement\1.0.0 DRAWINGS\10.3 Civil\DrawingProduction\700 Series Phase 2b.dwg



LEGEND

- EXISTING OVERHEAD UTILITIES
- PROPOSED OVERHEAD UTILITIES
- PROPOSED OVERHEAD POWER
- EXISTING UNDERGROUND UTILITIES
- EXISTING UNDERGROUND POWER
- EXISTING UNDERGROUND GAS
- PROPOSED UNDERGROUND UTILITIES
- PROPOSED UNDERGROUND POWER
- PROPOSED GAS
- PROPOSED UTILITY POLE
- PROPOSED ANCHOR



Suite 500
3980 Quadra Street
Victoria BC
Canada V8X 4A3
T 250 370 9221

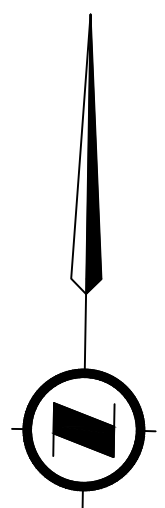
SCALE		0 5 1:500 25m	
CAD FILENAME		700 SERIES PHASE 2B	
DATE		2023-04-21	
REV	DATE	REVISIONS	SIGNATURE

MINISTRY OF TRANSPORTATION AND INFRASTRUCTURE
SOUTH COAST REGION
HIGHWAY ENGINEERING AND GEOMATICS

DESIGNED	S. BOON	DATE	2020-07-03
QUALITY CONTROL	S. BOON	DATE	2020-07-13
QUALITY ASSURANCE	L. PELTZ	DATE	2020-07-15
DRAWN	D. WENTLAND	DATE	2020-07-10

DRAINAGE AND UTILITIES - PHASE 2b			
DEWDNEY BRIDGE NO. 00596 LOUGHEED HIGHWAY NO. 7 STA 74+90 - 77+60			
FILE NUMBER	PROJECT NUMBER	REG	DRAWING NUMBER
	12652-0001	1	R1-965-701-2b

PLOT DATE: 2023/04/21 X:\2241\2241-02757-00 Mod1 - H7 Nicomeas Slough 00596 Dredway Bridge Replacement\1.0.0 DRAWINGS\10.3 Civil\DrawingProduction\700_Series_Phase 2b.dwg

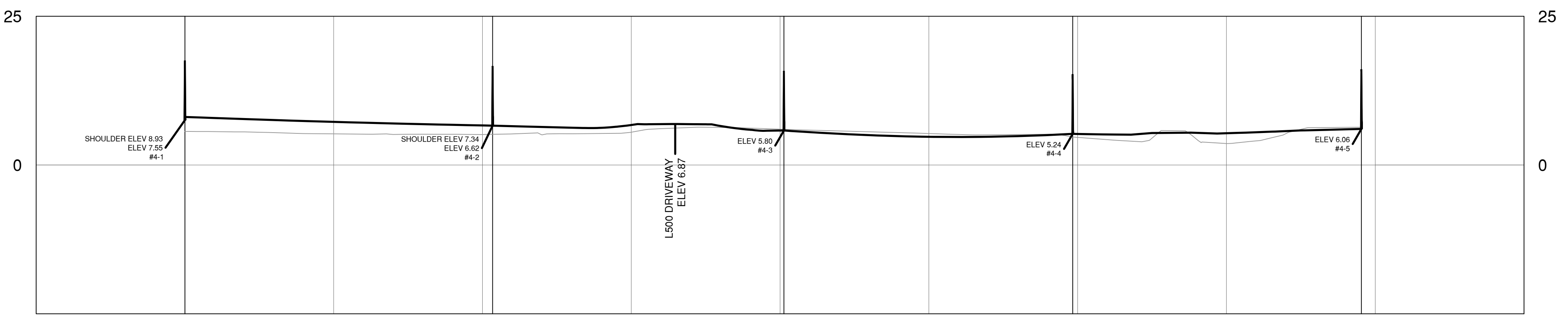
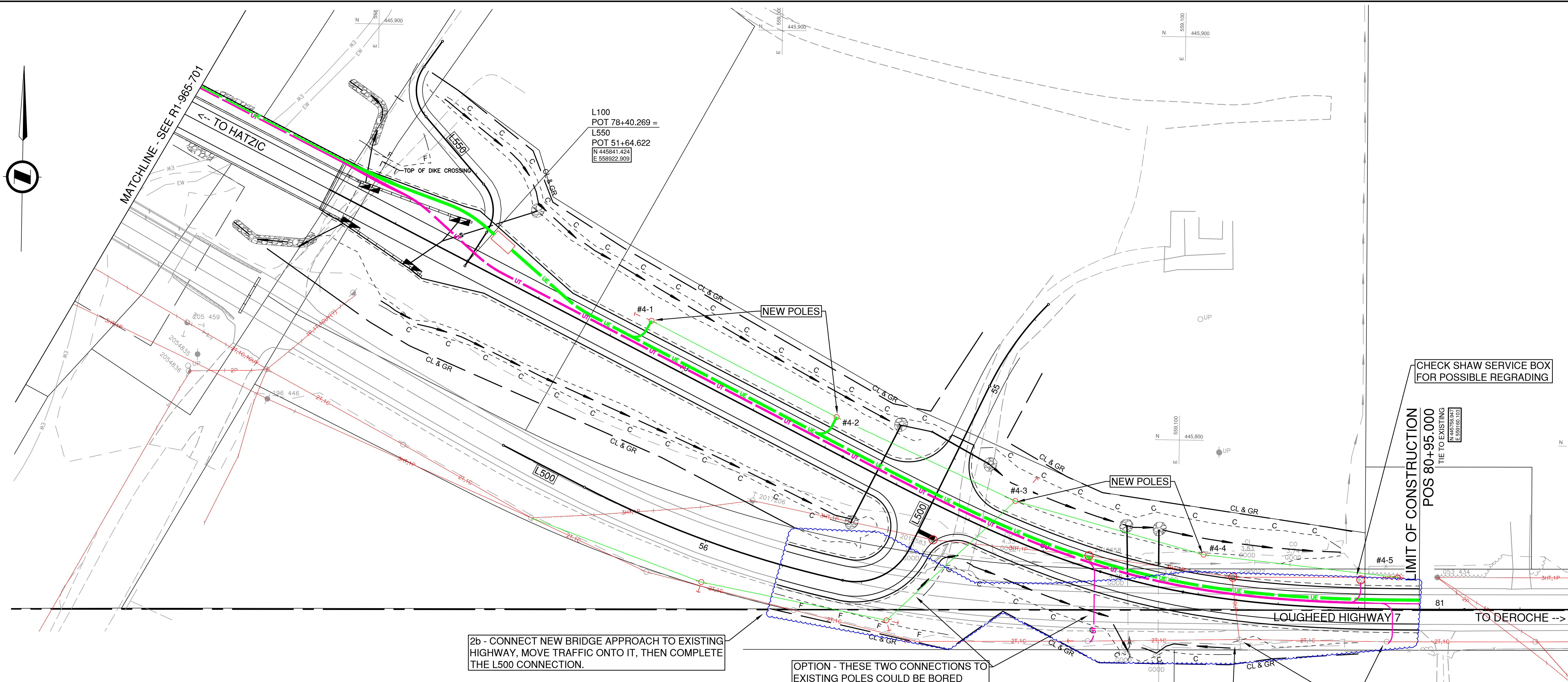


MATCHLINE - SEE R1-965-701
TO HATZIC

L100
POT 78+40.269 =
L550
POT 51+64.622
N 445841.424
E 558922.909

N 559.100
E 445.900

N 559.100
E 445.900



LEGEND

	EXISTING OVERHEAD UTILITIES
	PROPOSED OVERHEAD UTILITIES
	PROPOSED OVERHEAD POWER
	EXISTING UNDERGROUND UTILITIES
	EXISTING UNDERGROUND POWER
	EXISTING UNDERGROUND GAS
	PROPOSED UNDERGROUND UTILITIES
	PROPOSED UNDERGROUND POWER
	PROPOSED GAS
	PROPOSED UTILITY POLE
	PROPOSED ANCHOR

Suite 500
3960 Quadra Street
Victoria BC
Canada V8X 4A3
T 250 370 9221

REV	DATE	REVISIONS	SIGNATURE

SCALE 0 5 1:500 25m

CAD FILENAME 700 SERIES PHASE 2B
DATE 2023-04-21

SENIOR DESIGNER _____
DATE _____

MINISTRY OF TRANSPORTATION AND INFRASTRUCTURE
SOUTH COAST REGION
HIGHWAY ENGINEERING AND GEOMETRICS

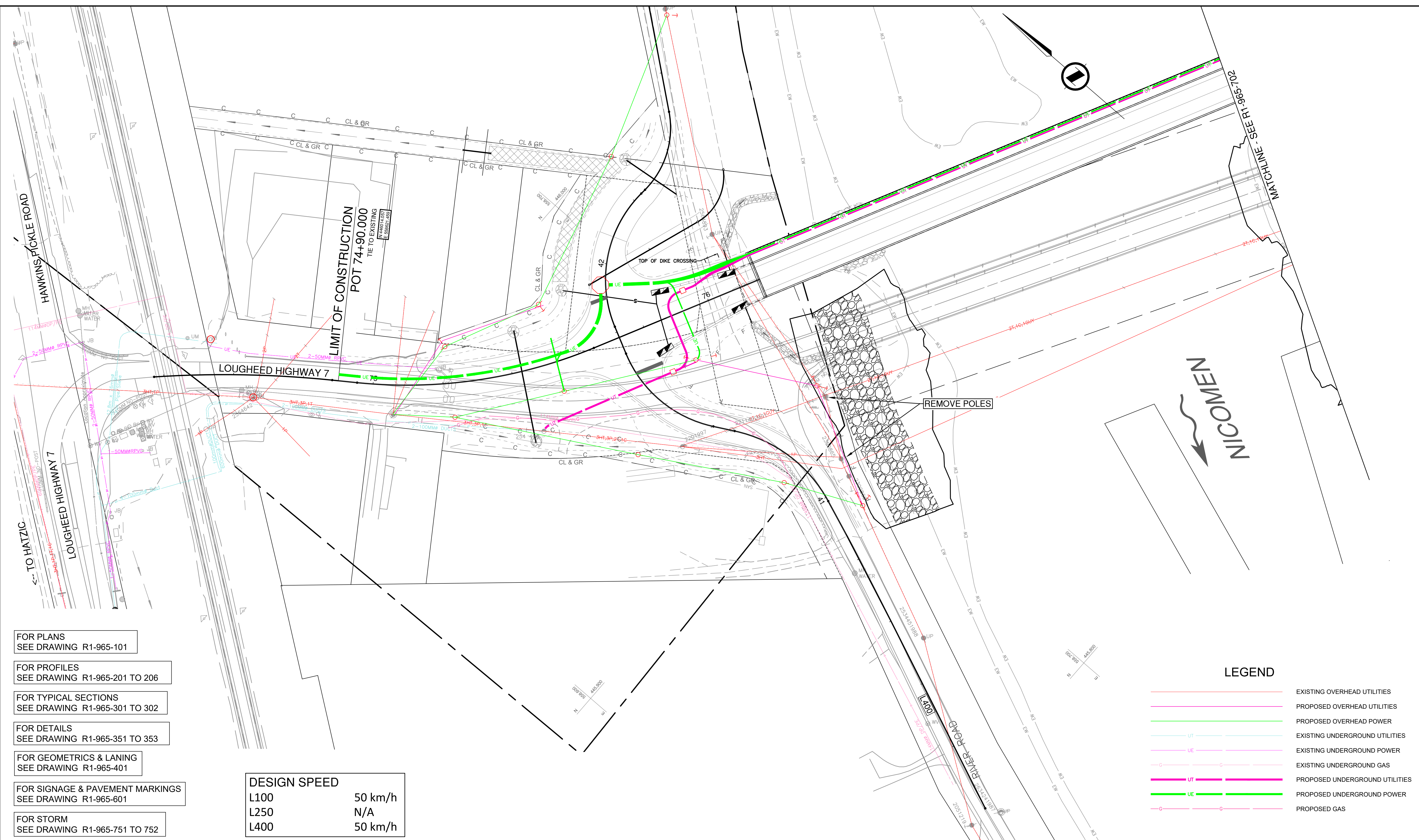
DESIGNED S. BOON DATE 2020-07-03
QUALITY CONTROL S. BOON DATE 2020-07-13
QUALITY ASSURANCE L. PELTZ DATE 2020-07-15
DRAWN D. WENTLAND DATE 2020-07-10

DRAINAGE AND UTILITIES - PHASE 2b

DEWDNEY BRIDGE NO. 00596
LOUGHEED HIGHWAY NO. 7
STA 77+60 - 80+95

FILE NUMBER	PROJECT NUMBER	REG	DRAWING NUMBER	REV
12652-0001	1	1	R1-965-702-2b	

PLOT DATE: 2023/04/21 X:\2241\2241-02757-00 Mod1 - H7 Nicomen Slough 06596 Dewdney Bridge Replacement\10.0 DRAWINGS\10.3 Civil\DrawingProduction\700 Series Phase 3.dwg



FOR PLANS
SEE DRAWING R1-965-101

FOR PROFILES
SEE DRAWING R1-965-201 TO 206

FOR TYPICAL SECTIONS
SEE DRAWING R1-965-301 TO 302

FOR DETAILS
SEE DRAWING R1-965-351 TO 353

FOR GEOMETRICS & LANING
SEE DRAWING R1-965-401

FOR SIGNAGE & PAVEMENT MARKINGS
SEE DRAWING R1-965-601

FOR STORM
SEE DRAWING R1-965-751 TO 752

DESIGN SPEED	
L100	50 km/h
L250	N/A
L400	50 km/h

LEGEND

	EXISTING OVERHEAD UTILITIES
	PROPOSED OVERHEAD UTILITIES
	PROPOSED OVERHEAD POWER
	EXISTING UNDERGROUND UTILITIES
	EXISTING UNDERGROUND POWER
	EXISTING UNDERGROUND GAS
	PROPOSED UNDERGROUND UTILITIES
	PROPOSED UNDERGROUND POWER
	PROPOSED GAS



Suite 500
3960 Quadra Street
Victoria BC
Canada V8X 4A3
T 250 370 9221

SCALE		0 5 1:500 25m	
REV	DATE	REVISIONS	SIGNATURE

CAD FILENAME 700 SERIES PHASE 3
DATE 2023-03-13

MINISTRY OF TRANSPORTATION AND INFRASTRUCTURE
SOUTH COAST REGION
HIGHWAY ENGINEERING AND GEOMATICS

DESIGNED S. BOON DATE 2020-07-03
QUALITY CONTROL S. BOON DATE 2020-07-13
QUALITY ASSURANCE L. PELTZ DATE 2020-07-15
DRAWN D. WENTLAND DATE 2020-07-10

SENIOR DESIGNER _____
DATE _____

DRAINAGE AND UTILITIES - PHASE 3			
DEWDNEY BRIDGE NO. 00596 LOUGHEED HIGHWAY NO. 7 STA 74+90 - 77+60			
FILE NUMBER	PROJECT NUMBER	REG	DRAWING NUMBER
	12652-0001	1	R1-965-701-3

PLOT DATE: 2023/04/21 X:\2241\2241-02757-00 Mod1 - H7 Nicomen Slough 00596 Dewardney Bridge Replacement\1.0.0 DRAWINGS\10.3 Civil\DrawingProduction\700_Series_Phase_3.dwg

REMOVE POLES

MATCHLINE - SEE R1-965-701
 ← TO HATZIC

PHASE 3 - REMOVE ORIGINAL BRIDGE STRUCTURE AND ABUTMENTS. RESHAPE EXISTING DIKE FACE AND ADD RIPRAP

ADD ANCHOR

NEW POLE

NEW POLE

LIMIT OF CONSTRUCTION
 POS 80+95.000
 TIE TO EXISTING
 ELEVATION 445.900

LOUGHEED HIGHWAY 7 TO DEROCHE -->

FOR PLANS
 SEE DRAWING R1-965-102

FOR PROFILES
 SEE DRAWING R1-965-201 TO 206

FOR TYPICAL SECTIONS
 SEE DRAWING R1-965-301 TO 303

FOR DETAILS
 SEE DRAWING R1-965-351 TO 353

FOR GEOMETRICS & LANING
 SEE DRAWING R1-965-402

FOR SIGNAGE & PAVEMENT MARKINGS
 SEE DRAWING R1-965-602

FOR STORM
 SEE DRAWING R1-965-751 TO 752

DESIGN SPEED
 L100 50 km/h
 L500 50 km/h
 L550 N/A

LEGEND

- EXISTING OVERHEAD UTILITIES
- PROPOSED OVERHEAD UTILITIES
- PROPOSED OVERHEAD POWER
- UT — EXISTING UNDERGROUND UTILITIES
- UE — EXISTING UNDERGROUND POWER
- G — EXISTING UNDERGROUND GAS
- UT — PROPOSED UNDERGROUND UTILITIES
- UE — PROPOSED UNDERGROUND POWER
- G — PROPOSED GAS



Suite 500
 3960 Quadra Street
 Victoria BC
 Canada V8X 4A3
 T 250 370 9221

SCALE		0 5 1:500 25m	
REV	DATE	REVISIONS	SIGNATURE

CAD FILENAME 700 SERIES PHASE 3
 DATE 2023-03-13

BRITISH COLUMBIA
 MINISTRY OF TRANSPORTATION AND INFRASTRUCTURE
 SOUTH COAST REGION
 HIGHWAY ENGINEERING AND GEOMETRICS

DESIGNED S. BOON DATE 2020-07-03
 QUALITY CONTROL S. BOON DATE 2020-07-13
 QUALITY ASSURANCE L. PELTZ DATE 2020-07-15
 DRAWN D. WENTLAND DATE 2020-07-10

SENIOR DESIGNER
 DATE

DRAINAGE AND UTILITIES - PHASE 3			
DEWDNEY BRIDGE NO. 00596 LOUGHEED HIGHWAY NO. 7 STA 77+60 - 80+95			
FILE NUMBER	PROJECT NUMBER	REG	DRAWING NUMBER
	12652-0001	1	R1-965-702-3