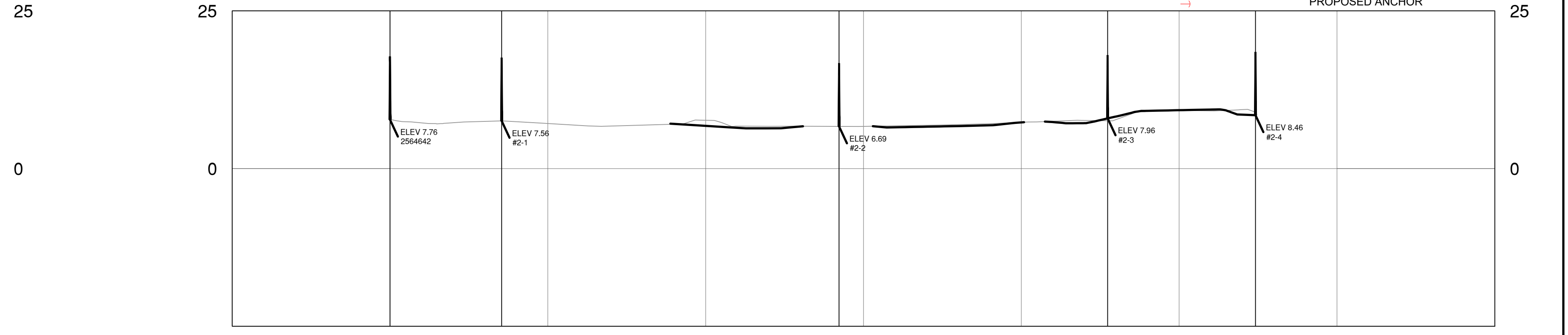
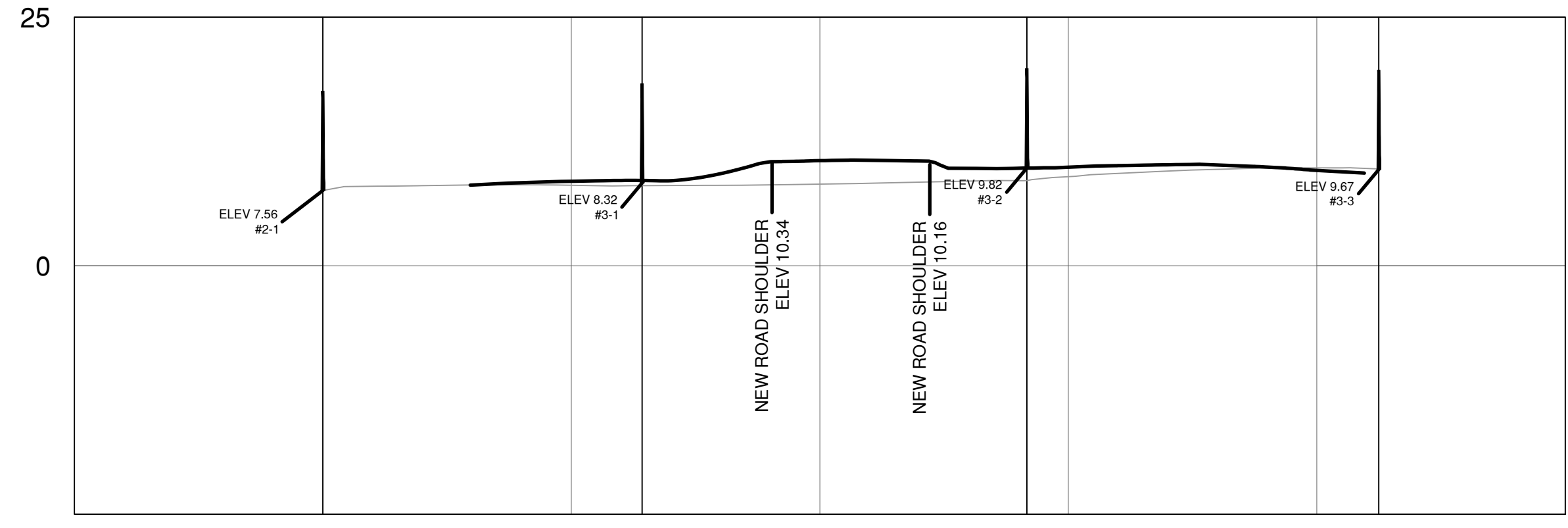
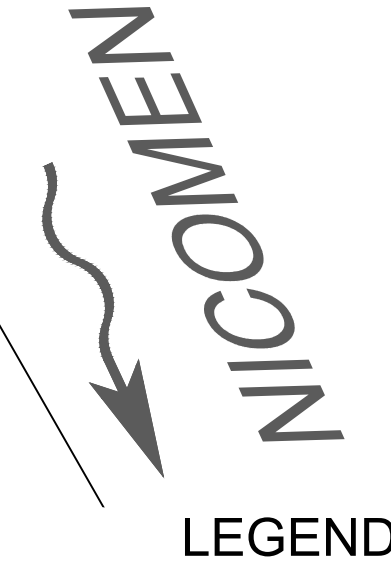
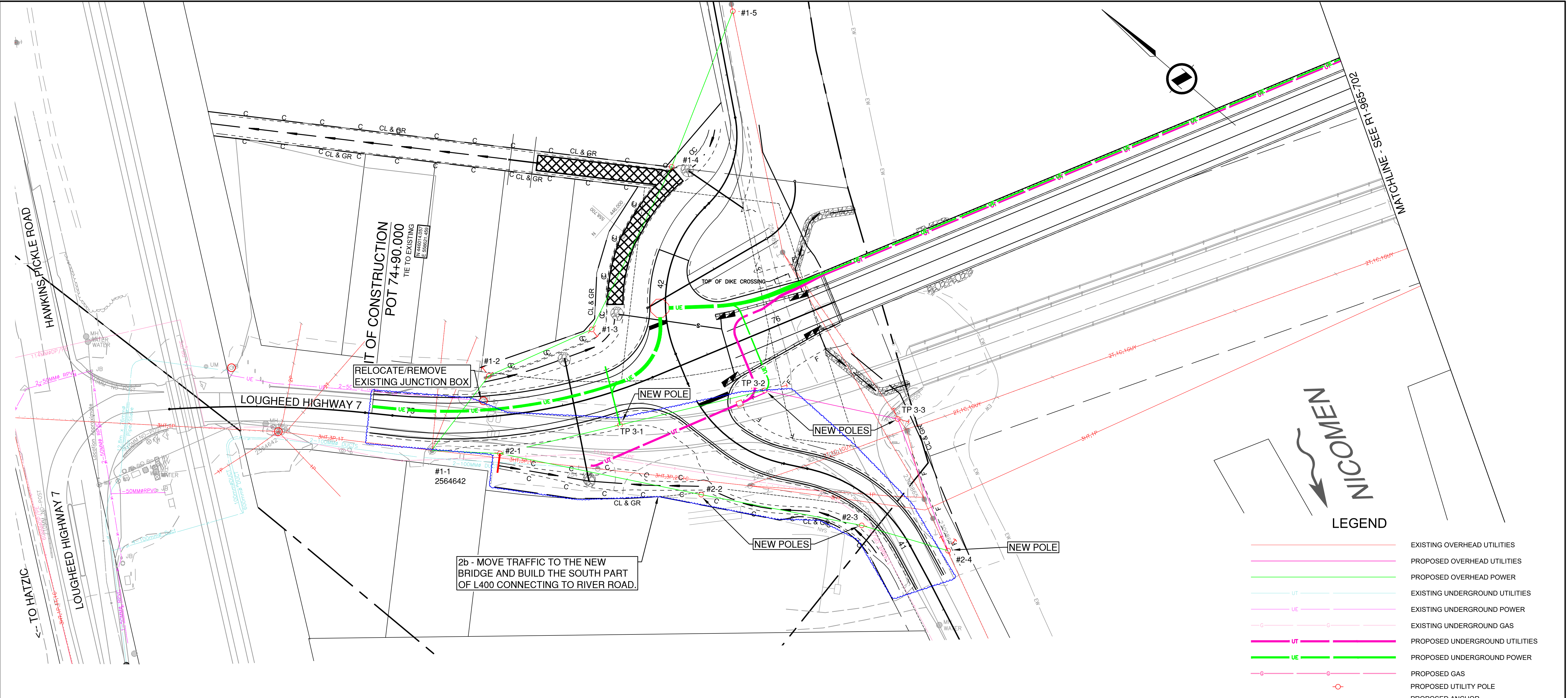


PLOT DATE: 2023/09/05 X:\2241\2241-02757-00 ModI - H7 Nicomen Slough 00596 Dewdney Bridge Replacement\1.0.0 Drawings\10.3 Civil\DrawingProduction\700 Series Phase 2b.dwg



McElhanney

Suite 500
3960 Quadra Street
Victoria BC
Canada V8X 4A3
T 250 370 9221

SCALE 0 5 1:500 25m

CAD FILENAME 700 SERIES PHASE 2B
DATE 2023-09-05

REV	DATE	REVISIONS	SIGNATURE
A	2023-09-05	UTILITY UPDATES	ETW

BRITISH COLUMBIA

MINISTRY OF TRANSPORTATION AND INFRASTRUCTURE
SOUTH COAST REGION
HIGHWAY ENGINEERING AND GEOMATICS

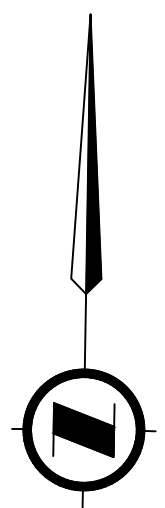
DESIGNED S. BOON DATE 2020-07-03
QUALITY CONTROL S. BOON DATE 2020-07-13
QUALITY ASSURANCE L. PELTZ DATE 2020-07-15
DRAWN D. WENTLAND DATE 2020-07-10

DRAINAGE AND UTILITIES - PHASE 2b

DEWDEY BRIDGE NO. 00596
LOUGHEED HIGHWAY NO. 7
STA 74+90 - 77+60

FILE NUMBER	PROJECT NUMBER	REG	DRAWING NUMBER	REV
	12652-0001	1	R1-965-701-2b	A

PLOT DATE: 2023/09/05 X:\2241\2241-02757-00 ModI - H7 Nicomesa Slough 00596 Dewdney Bridge Replacement\1.0.0 DRAWINGS\10.3 Civil\DrawingProduction\700_Series_Phase_2b.dwg



MATCHLINE - SEE R1-965-701
TO HATZIC

L100
POT 78+40.269 =
L550
POT 51+64.622
N 445841.424
E 558922.909

N 559.100
E 445.900

N 559.100
E 445.900

CHECK SHAW SERVICE BOX
FOR POSSIBLE REGRADING

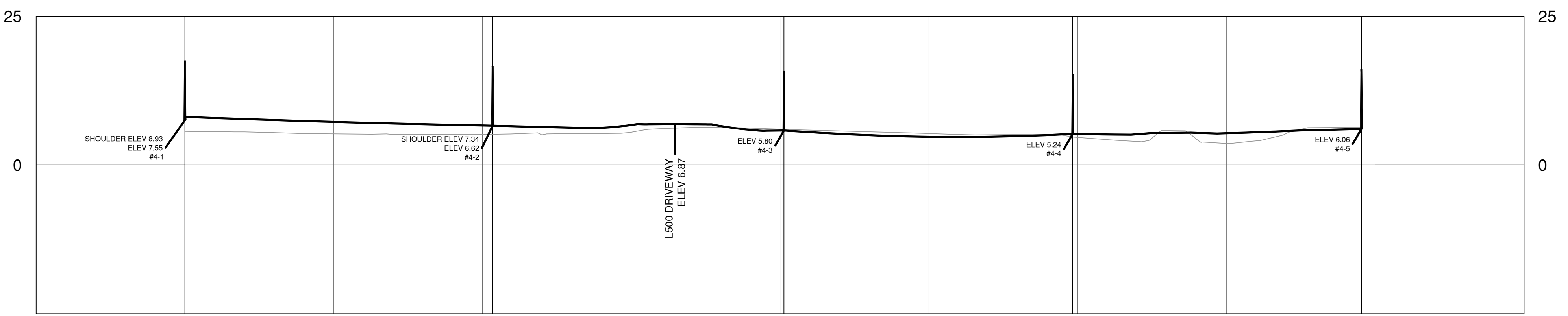
LIMIT OF CONSTRUCTION
POS 80+95.000
TIE TO EXISTING
POT 51+64.622
E 558922.909

2b - CONNECT NEW BRIDGE APPROACH TO EXISTING
HIGHWAY, MOVE TRAFFIC ONTO IT, THEN COMPLETE
THE L500 CONNECTION.

CHECK THIS POLE AND
ANCHOR FOR CONFLICTS

LEGEND

- EXISTING OVERHEAD UTILITIES
- PROPOSED OVERHEAD UTILITIES
- PROPOSED OVERHEAD POWER
- EXISTING UNDERGROUND UTILITIES
- EXISTING UNDERGROUND POWER
- EXISTING UNDERGROUND GAS
- PROPOSED UNDERGROUND UTILITIES
- PROPOSED UNDERGROUND POWER
- PROPOSED GAS
- PROPOSED UTILITY POLE
- PROPOSED ANCHOR



Suite 500
3960 Quadra Street
Victoria BC
Canada V8X 4A3
T 250 370 9221

SCALE		0 5 1:500 25m	
CAD FILENAME		700 SERIES PHASE 2B	
DATE		2023-09-05	
REV	DATE	REVISIONS	SIGNATURE
A	2023-09-06	UTILITY UPDATES	ETW

BRITISH COLUMBIA
MINISTRY OF TRANSPORTATION
AND INFRASTRUCTURE
SOUTH COAST REGION
HIGHWAY ENGINEERING AND GEOMATICS

DESIGNED: S. BOON DATE: 2020-07-03
QUALITY CONTROL: S. BOON DATE: 2020-07-13
QUALITY ASSURANCE: L. PELTZ DATE: 2020-07-15
DRAWN: D. WENTLAND DATE: 2020-07-10

SENIOR DESIGNER: _____
DATE: _____

DRAINAGE AND UTILITIES - PHASE 2b			
DEWDNEY BRIDGE NO. 00596 LOUGHEED HIGHWAY NO. 7 STA 77+60 - 80+95			
FILE NUMBER	PROJECT NUMBER	REG	DRAWING NUMBER
	12652-0001	1	R1-965-702-2b
			REV A