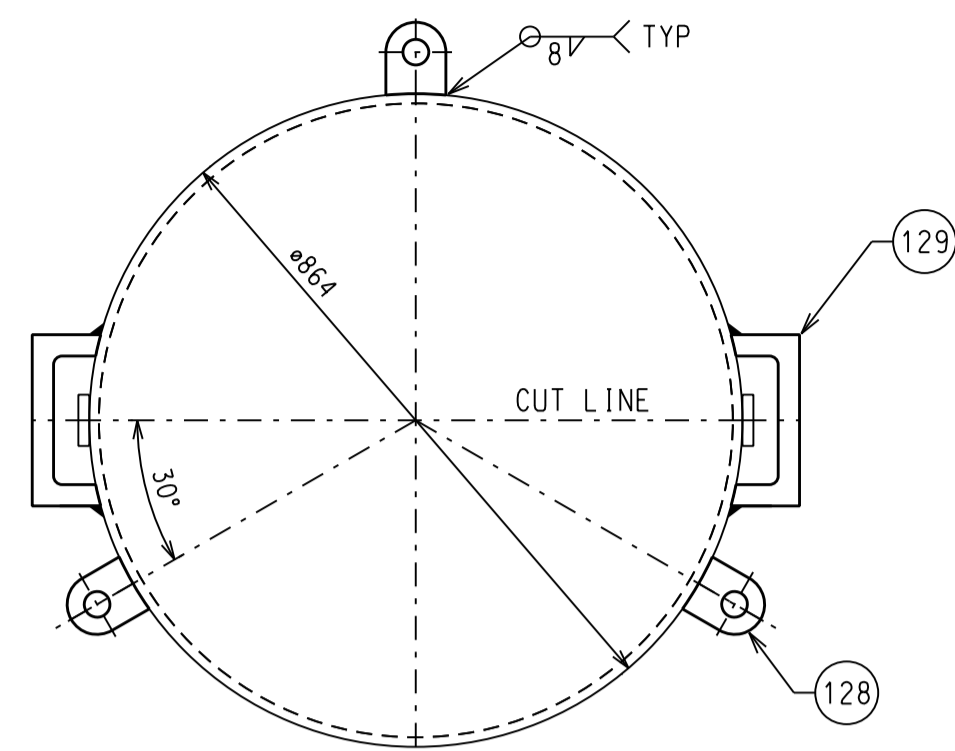




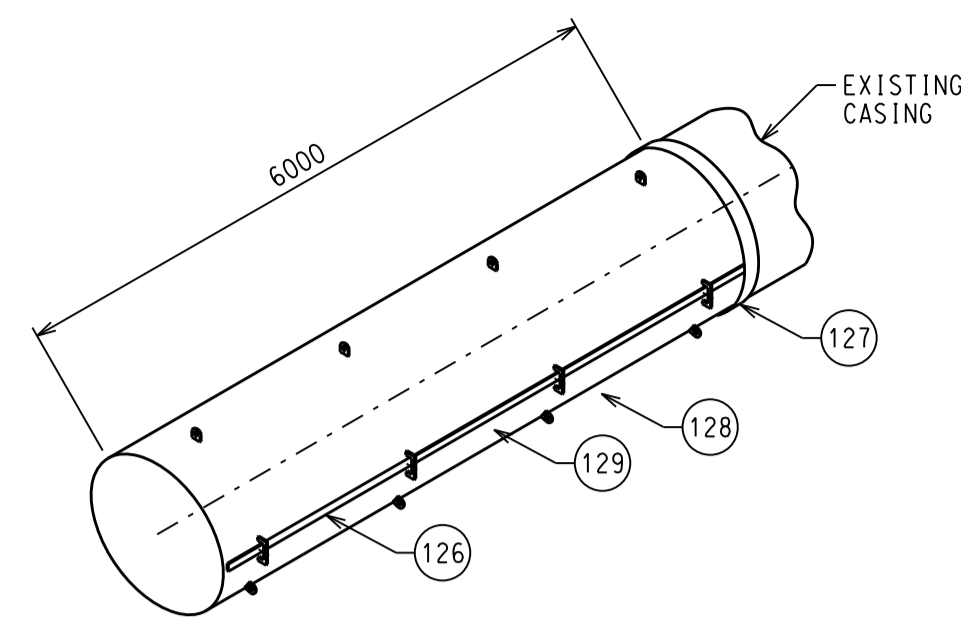
NPS 34 / 864mm OD

BILL OF MATERIALS

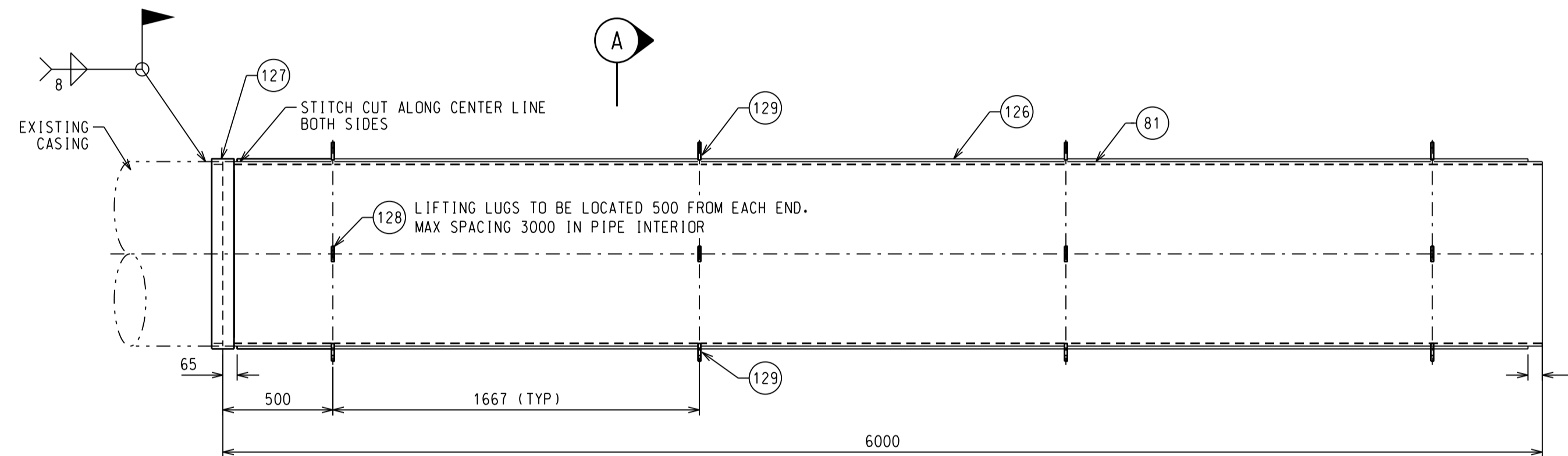
ITEM NO.	QUANTITY #	count	NOMINAL SIZE (mm OD)	RATING / WT	CONN	MATERIAL	PART NAME	NOTES	FBC PART NO.
81	6	m	NPS 34 / 864mm	12.7mm	BE	CSA Z245.1 GR 359 CAT I	PIPE	BARE PIPE TO BE INSTALLED AS SPLIT CASING ON HUN NIC 762. PURCHASE DRL	
126	12	m	60mm (WIDTH)	12.7mm		CSA G40.21 300W	SPLIT CASING, GUIDE BAR (LONGITUDINAL JOINT)	STEEL BAR (2" WIDE, 1/2" THICK) MANUFACTURE GUIDE BAR FROM STEEL PLATE	
127	1	ea	100mm (WIDTH)	9.5mm		CSA G40.21 300W	SPLIT CASING, WELD BAND (CIRCUMFERENTIAL JOINT)	STEEL BAR (4" WIDE, 3/8" THICK) FIELD INSTALL. SHIP MANUFACTURED PARTS WITH SPLIT CASING	
128	12	ea		12.7mm		CSA G40.21 300W	LIFTING LUG	MANUFACTURE LIFTING LUGS FROM STEEL PLATE	
129	8	ea		12.7mm		CSA G40.21 300W	DOG	MANUFACTURE DOGS FROM STEEL PLATE	



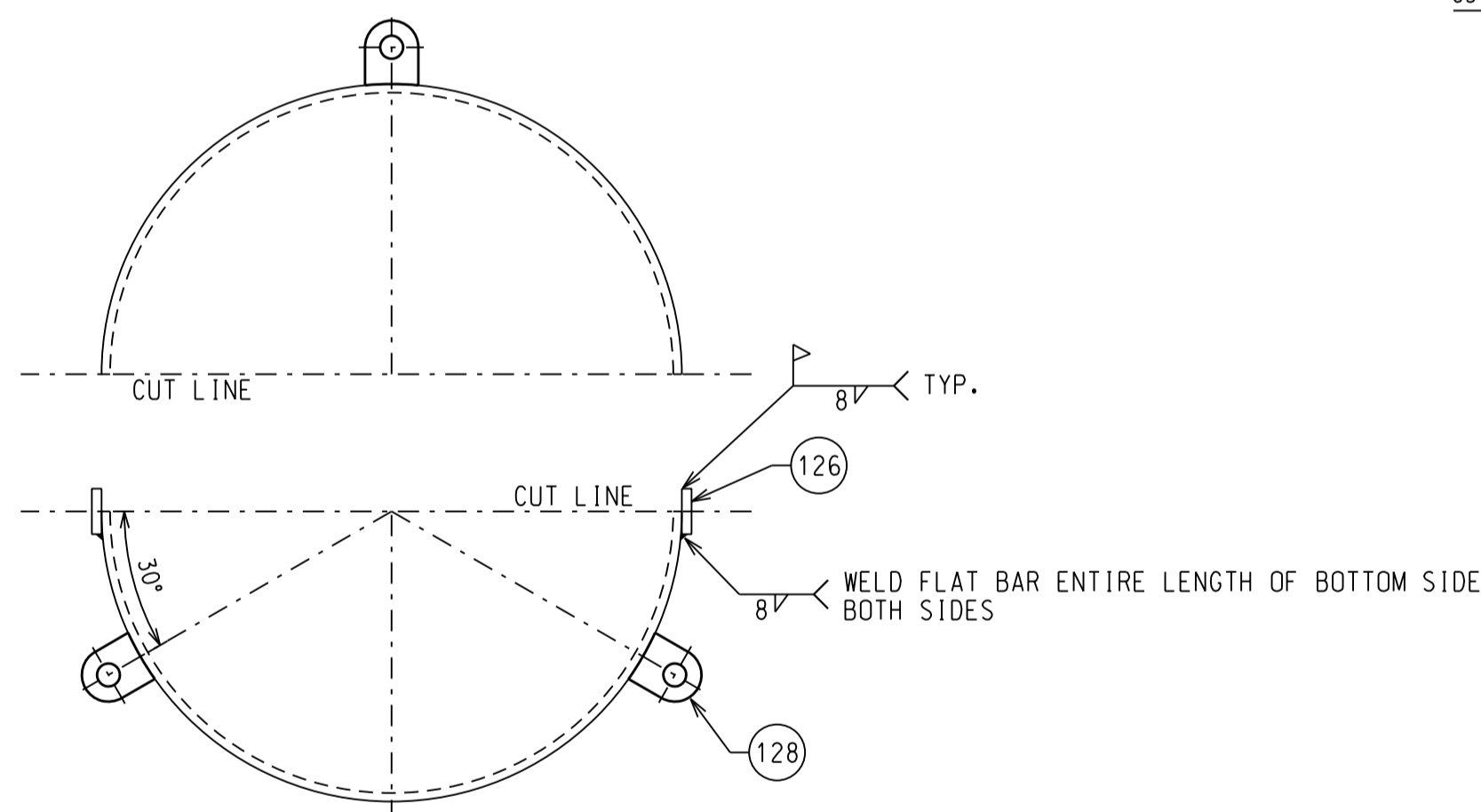
**A** END SECTION - PREPARED FOR CUT  
SCALE 1:10



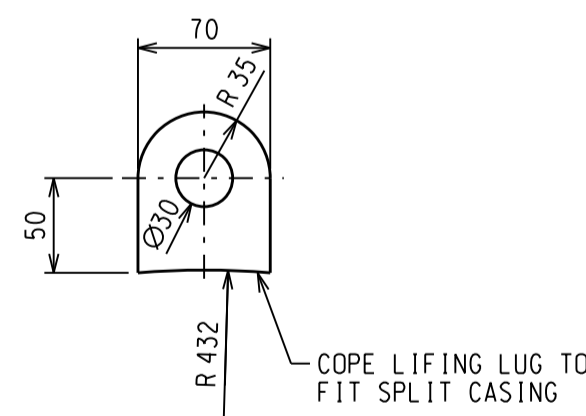
ISOMETRIC VIEW  
SCALE: NTS  
QTY: 12



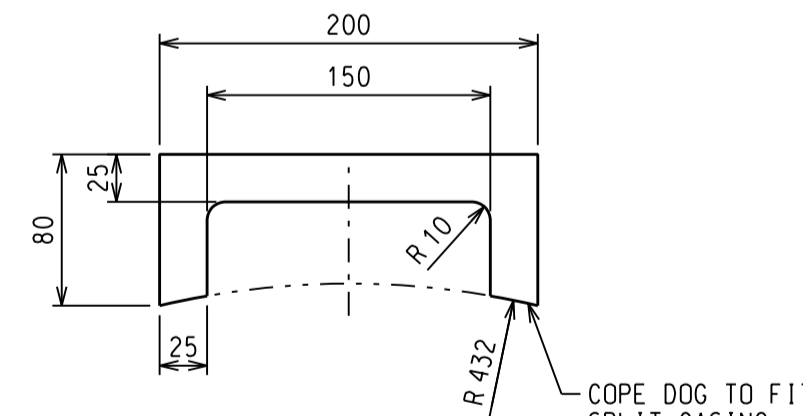
864mm OD X 6m - TOP VIEW  
SCALE 1:20



**A** END SECTION - CUT COMPLETE  
SCALE 1:10



**128** LIFTING LUG - ITEM  
SCALE 1:4



**129** DOG - ITEM  
SCALE 1:4

NOTES:

- DIMENSIONS IN mm UNLESS OTHERWISE NOTED.
- FABRICATION DRAWING IS FOR FABRICATION OF SPLIT CASING NOT INSTALLATION OF SPLIT CASING. REFER TO FORTISBC DWG 99000-M-000-170 'TYPICAL SPLIT CASING NEW OR EXTENSION' FOR INSTALLATION DETAILS.
- FABRICATION OF SPLIT CASING FROM PIPE. REFER TO CONSTRUCTION DRAWING FOR SPLIT CASING LENGTH. (42004-P-600-1007), TO SHIP TWELVE (x12) INDIVIDUAL SPLIT CASING ASSEMBLY TO SITE (6m)

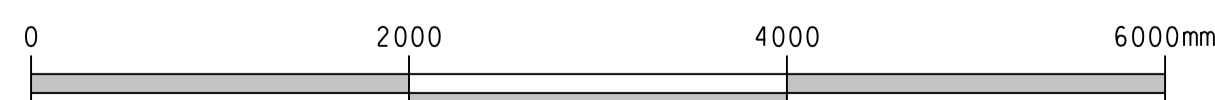
FABRICATION NOTES:

- CUT AND ARRANGE PIPE LENGTHS TO REQUIRED SPLIT CASING DIMENSIONS.
  - 6m PIPE.
  - IDENTIFY EACH SPLIT CASING. MARK BOTH HALVES OF SPLIT CASINGS BY IDENTIFYING THE MATCHING ENDS SO THEY CAN BE ASSEMBLED ON SITE MATCHING ORIGINAL POSITION.
- MARK FABRICATION REQUIREMENTS
  - CUT LINE DOWN BOTH SIDES OF PIPE (END SECTION - PREPARED FOR CUT - 'A')
  - CENTERLINE OF DOG LOCATIONS
  - LIFTING LUG LOCATIONS
- INSTALL LIFTING LUGS AND DOGS
- COMPLETE STITCH CUT ALONG CUT LINE ON BOTH SIDES OF PIPE (300mm CUT, 75mm UNCUT) LEAVING ADDITIONAL 300mm UNCUT CENTERED AT DOG LOCATION.
- SEPARATE PIPE INTO TWO HALVES (DOGS WILL HOLD PIPE TOGETHER)
  - CUT REMAINING 75mm STITCHES BETWEEN DOG LOCATIONS
  - CUT REMAINING 300mm LOCATIONS UNDERNEATH DOG LOCATIONS
- CUT LONGITUDINAL FLAT BAR TO REQUIRED LENGTHS (PART 126). PLACE LONGITUDINAL FLAT BAR THROUGH DOGS. STOP 65mm FROM ENDS OF SPLIT CASING.
- WELD LONGITUDINAL FLAT BAR TO BOTTOM HALF OF SPLIT CASING. WEDGE THE FLAT BAR TO SECURE IN CENTER OF CUT. TACK BOTH SIDES. COMPLETE WELD. COMPLETE FOR BOTH SIDES. (NOTE FIELD CREW WILL JOINT SPLIT CASING HALVES ON SITE BY WELDING THE TOP OF THE LONGITUDINAL BAR TO THE TOP OF THE SPLIT CASING.)
- REMOVE DOGS IN A CONTROLLED MANNER TO CONTROL RELEASE OF POTENTIAL TENSION IN PIPE (I.E. CHAINS OR STRAPS AT EACH DOG LOCATION)
- SEPARATE SPLIT CASING HALVES. GRIND AND CUT SLAG FROM CUT EDGES TO SIMPLIFY FIELD INSTALLATION.
- ALL WELDING TO CSA W59.
- MPI LIFTING LUGS ONLY. NO OTHER NDI REQUIRED.
- VISUAL INSPECTION ON ALL WELDS TO CSA W59.
- CASING VENT TO BE INSTALLED ON SITE PER STANDARD DRAWING 99000-M-000-169.

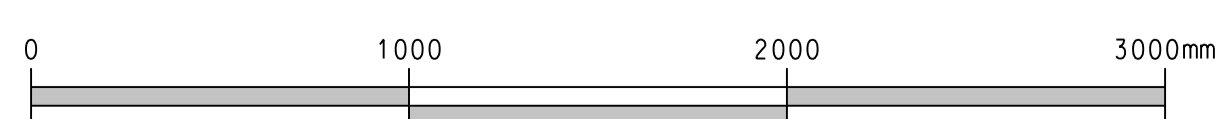
REFERENCE DRAWINGS:

- 99000-M-000-169 TYPICAL CASING DESIGN
- 99000-M-000-170 TYPICAL SPLIT CASING NEW OR EXTENSION
- 42004-P-600-1007 CASING EXTENSION PLAN AND PROFILE

**ISSUED FOR CONSTRUCTION**  
2023-07-27



SCALE 1:10



SCALE 1:20

ENGINEERING SERVICES	RO	ISSUED FOR CONSTRUCTION	J. FULTON	S. AUJLA	2023-07-27
BY	No.	REVISION	DRAWN	DESIGNED	CHECKED
PREVIOUS DR. NO. -			SCALE - AS SHOWN		



PERMIT TO PRACTICE No.

ENGINEER SEAL

HUNTINGDON NICHOL 762 TP PIPELINE  
HIGHWAY NO. 1 - TRANS CANADA HWY  
SPLIT CASING 864mm OD x 6m  
FABRICATION DRAWING

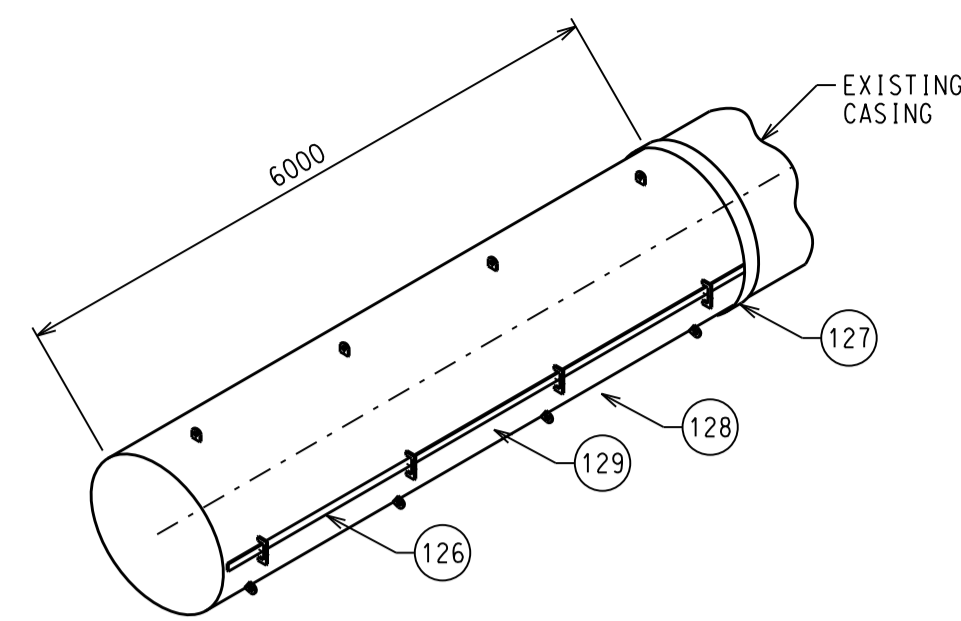
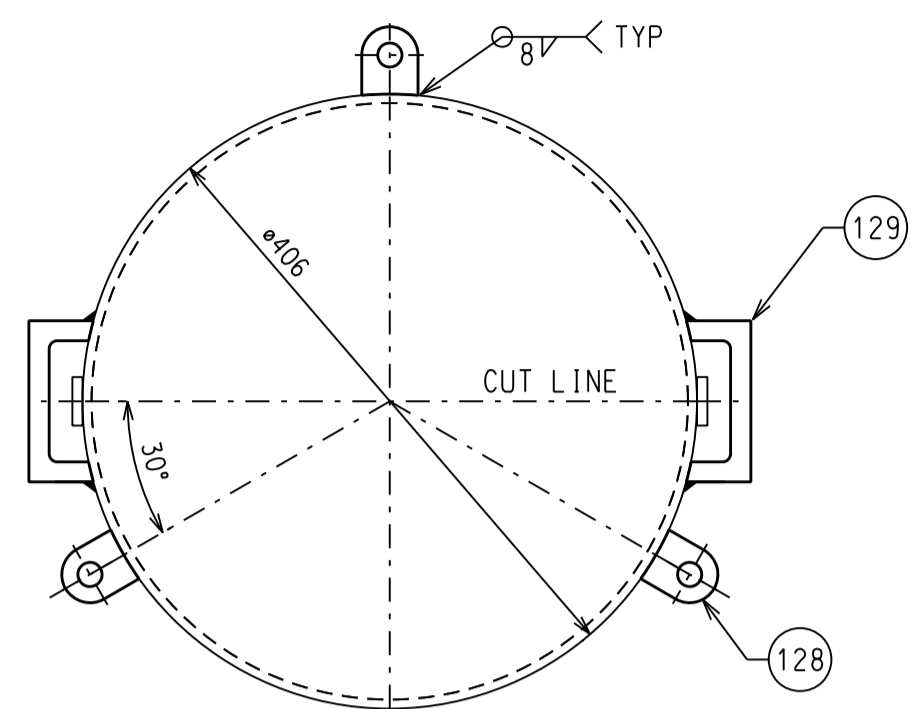
DRAWING NUMBER 42004-P-600-1008-R0



NPS 16 / 406mm OD

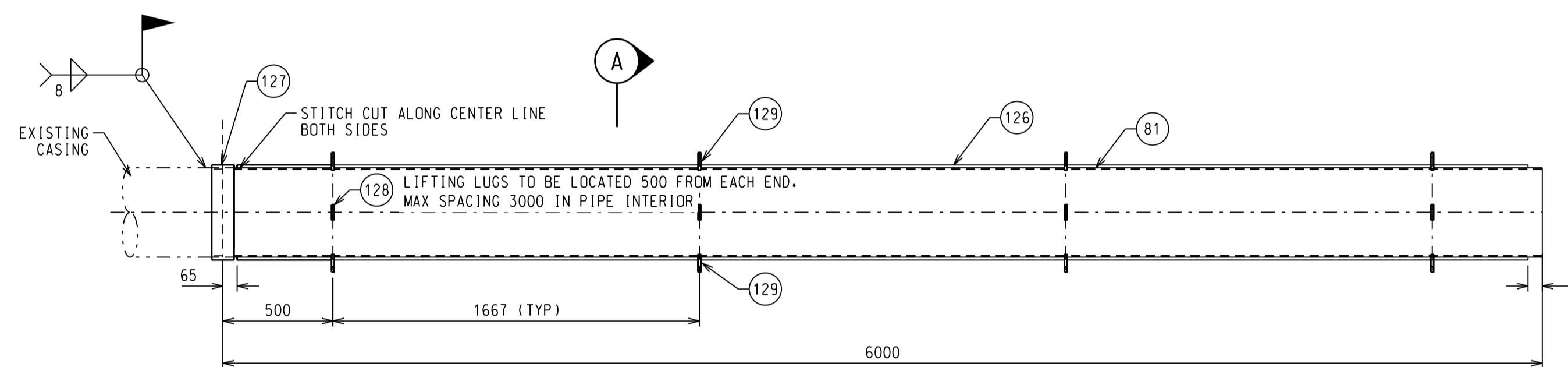
BILL OF MATERIALS

ITEM NO.	QUANTITY #	count	NOMINAL SIZE (mm OD)	RATING / WT	CONN	MATERIAL	PART NAME	NOTES	FBC PART NO.
81	6	m	NPS 16 / 406mm	6.4mm	BE	ASTM A252 Gr.3	PIPE	BARE PIPE TO BE INSTALLED AS SPLIT CASING ON LIV COC 323. PURCHASE DRL	
126	12	m	60mm (WIDTH)	12.7mm		CSA G40.21 300W	SPLIT CASING, GUIDE BAR (LONGITUDINAL JOINT)	STEEL BAR (2" WIDE, 1/2" THICK) MANUFACTURE GUIDE BAR FROM STEEL PLATE	
127	1	ea	100mm (WIDTH)	9.5mm		CSA G40.21 300W	SPLIT CASING, WELD BAND (CIRCUMFERENTIAL JOINT)	STEEL BAR (4" WIDE, 3/8" THICK) FIELD INSTALL. SHIP MANUFACTURED PARTS WITH SPLIT CASING	
128	12	ea		12.7mm		CSA G40.21 300W	LIFTING LUG	MANUFACTURE LIFTING LUGS FROM STEEL PLATE	
129	8	ea		12.7mm		CSA G40.21 300W	DOG	MANUFACTURE DOGS FROM STEEL PLATE	

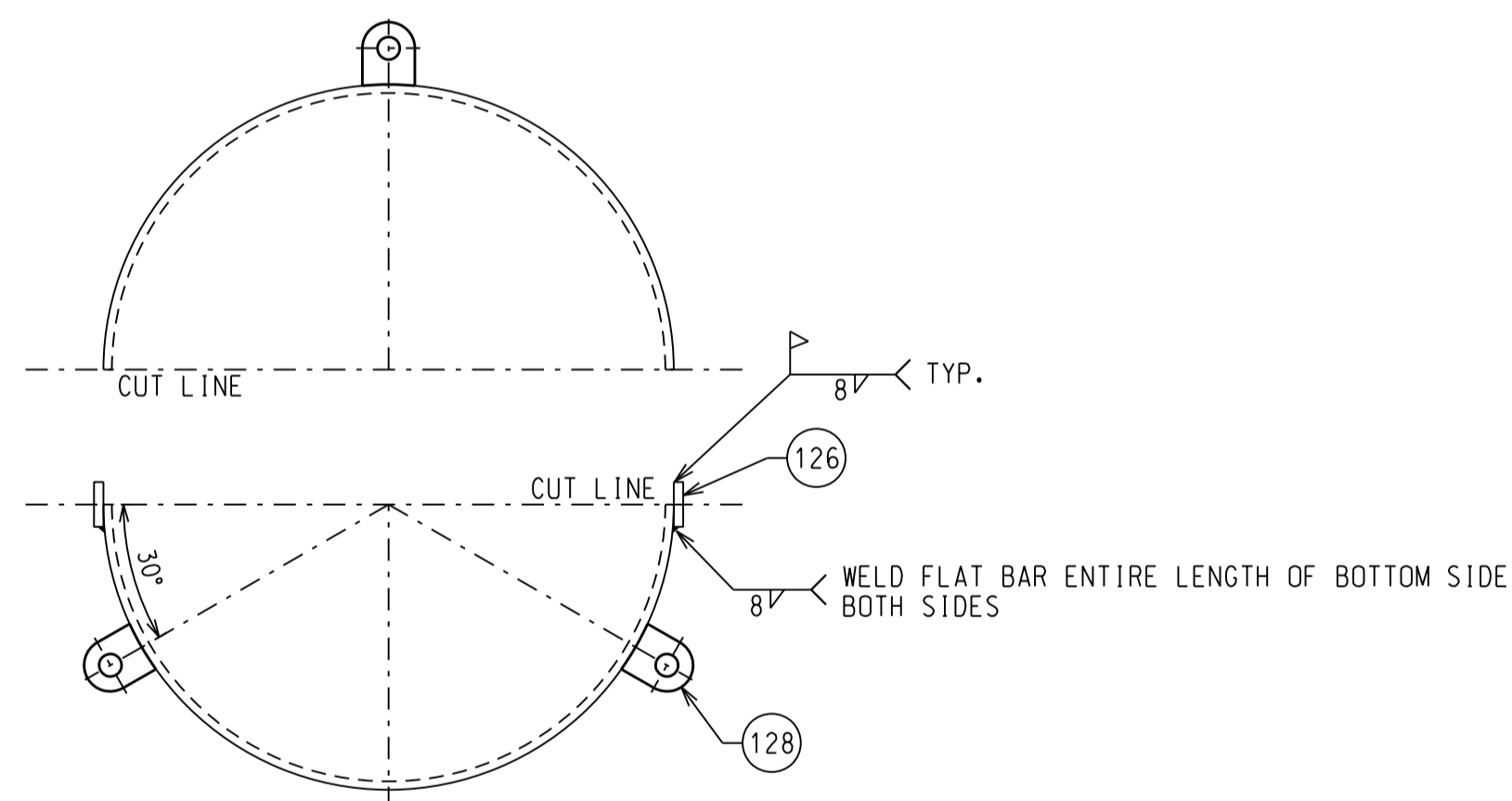


ISOMETRIC VIEW  
SCALE: NTS  
QTY: 16

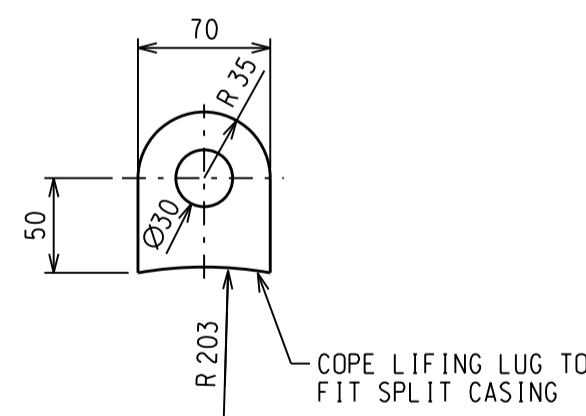
A END SECTION - PREPARED FOR CUT  
SCALE 1:10



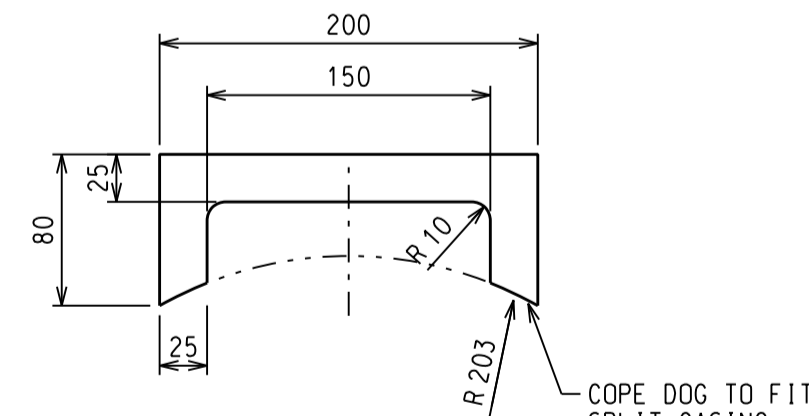
406mm OD X 6m - TOP VIEW  
SCALE 1:20



A END SECTION - CUT COMPLETE  
SCALE 1:10



128 LIFTING LUG - ITEM  
SCALE 1:4



129 DOG - ITEM  
SCALE 1:4

NOTES:

- DIMENSIONS IN mm UNLESS OTHERWISE NOTED.
- FABRICATION DRAWING IS FOR FABRICATION OF SPLIT CASING NOT INSTALLATION OF SPLIT CASING. REFER TO FORTISBC DWG 99000-M-000-170 'TYPICAL SPLIT CASING NEW OR EXTENSION' FOR INSTALLATION DETAILS.
- FABRICATION OF SPLIT CASING FROM PIPE. REFER TO CONSTRUCTION DRAWING FOR SPLIT CASING LENGTH. (42005-P-600-1000). TO SHIP SIXTEEN (x16) INDIVIDUAL SPLIT CASING ASSEMBLY TO SITE (6m)

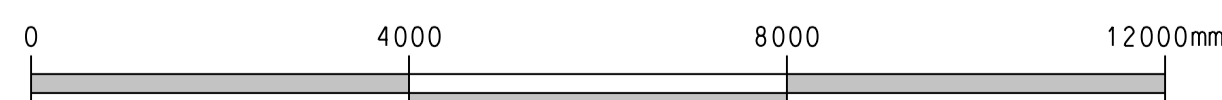
FABRICATION NOTES:

- CUT AND ARRANGE PIPE LENGTHS TO REQUIRED SPLIT CASING DIMENSIONS.
  - 6m PIPE.
  - IDENTIFY EACH SPLIT CASING. MARK BOTH HALVES OF SPLIT CASINGS BY IDENTIFYING THE MATCHING ENDS SO THEY CAN BE ASSEMBLED ON SITE MATCHING ORIGINAL POSITION.
- MARK FABRICATION REQUIREMENTS
  - CUT LINE DOWN BOTH SIDES OF PIPE (END SECTION - PREPARED FOR CUT - 'A')
  - CENTERLINE OF DOG LOCATIONS
  - LIFTING LUG LOCATIONS
- INSTALL LIFTING LUGS AND DOGS
- COMPLETE STITCH CUT ALONG CUT LINE ON BOTH SIDES OF PIPE (300mm CUT, 75mm UNCUT) LEAVING ADDITIONAL 300mm UNCUT CENTERED AT DOG LOCATION.
- SEPARATE PIPE INTO TWO HALVES (DOGS WILL HOLD PIPE TOGETHER)
  - CUT REMAINING 75mm STITCHES BETWEEN DOG LOCATIONS
  - CUT REMAINING 300mm LOCATIONS UNDERNEATH DOG LOCATIONS
- CUT LONGITUDINAL FLAT BAR TO REQUIRED LENGTHS (PART 126). PLACE LONGITUDINAL FLAT BAR THROUGH DOGS. STOP 65mm FROM ENDS OF SPLIT CASING.
- WELD LONGITUDINAL FLAT BAR TO BOTTOM HALF OF SPLIT CASING. WEDGE THE FLAT BAR TO SECURE IN CENTER OF CUT. TACK BOTH SIDES. COMPLETE WELD. COMPLETE FOR BOTH SIDES. (NOTE FIELD CREW WILL JOINT SPLIT CASING HALVES ON SITE BY WELDING THE TOP OF THE LONGITUDINAL BAR TO THE TOP OF THE SPLIT CASING.)
- REMOVE DOGS IN A CONTROLLED MANNER TO CONTROL RELEASE OF POTENTIAL TENSION IN PIPE (I.E. CHAINS OR STRAPS AT EACH DOG LOCATION)
- SEPARATE SPLIT CASING HALVES. GRIND AND CUT SLAG FROM CUT EDGES TO SIMPLIFY FIELD INSTALLATION.
- ALL WELDING TO CSA W59.
- MPI LIFTING LUGS ONLY. NO OTHER NDI REQUIRED.
- VISUAL INSPECTION ON ALL WELDS TO CSA W59.
- CASING VENT TO BE INSTALLED ON SITE PER STANDARD DRAWING 99000-M-000-169.

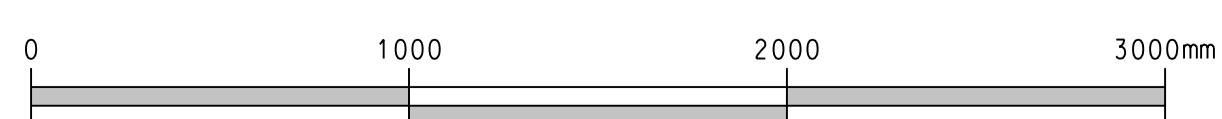
REFERENCE DRAWINGS:

- 99000-M-000-169 TYPICAL CASING DESIGN
- 99000-M-000-170 TYPICAL SPLIT CASING NEW OR EXTENSION
- 42005-P-600-1000 CASING EXTENSION PLAN AND PROFILE

ISSUED FOR CONSTRUCTION  
2023-07-27



SCALE 1:5



SCALE 1:20

ENGINEERING SERVICES	RO	ISSUED FOR CONSTRUCTION	J. FULTON	S. AUJLA	2023-07-27
BY	No.	REVISION	DRAWN	DESIGNED	CHECKED
					DATE (YYYY-MM-DD)
			PREVIOUS DR. NO. -		SCALE - AS SHOWN



PERMIT TO PRACTICE No.

ENGINEER SEAL

LIVINGSTON COQUITLAM 323 TP PIPELINE  
HIGHWAY NO. 1 - TRANS CANADA HWY  
SPLIT CASING 406.4mm OD x 6m  
FABRICATION DRAWING

DRAWING NUMBER 42005-P-600-1001-R0