

WARNING
 TELUS FIBRE OPTIC CABLE
 DO NOT TOUCH
 51 BLACK
 15 YELLOW TAGS

WARNING
 TELUS FIBRE OPTIC CABLE
 144F SM PSP STR LTZ RD
 HANY_F15
 NW# 2707271
 DO NOT TOUCH
 30 BLACK
 9 YELLOW TAGS

WARNING
 TELUS FIBRE OPTIC CABLE
 144F SM PSP STR LTZ RD
 HANY_F11
 NW# 2707271
 DO NOT TOUCH
 15 BLACK
 9 YELLOW TAGS

557 OTR (FEEDER) - 264F
 558 PWR MTR (FEEDER) - 264F

SHEET 1

SHEET 2

SHEET 3
 TOP

SHEET 3 LEFT

SITE MAP
 - NTS -

PREPARED BY:	telecon design	DESIGN: BILL CRAIG	DR: BILL CRAIG	THE WORKS PROPOSED ON THIS DRAWING SHALL AT ALL TIMES REMAIN THE PROPERTY OF TELUS. PROPOSED AERIAL AND UNDERGROUND TELEPHONE CONSTRUCTION TO RELOCATE PLANT CONFLICTING WITH INTERSECTION IMPROVEMENTS ON HANEY BYPASS MAPLE RIDGE. HANEY CO
REV.	DESCRIPTION:	DATE (M/D/Y)	SCALE: AS SHOWN	
0	ISSUE FOR APPROVAL	12/10/18	DATE: 04 OCT 18	C.O. CODE HANY
			ASSOCIATED DRAWINGS 2707271U	SYSTEM NAME: 2707271C1-1.DWG
				TELUS A1

REMOVE OLD POLE 41
 02689747
 59' CLZ PLACED 2015 AUG 11

PLACE 1.5" SIZE DOWN GUY FROM UPPER STRAND HEIGHT TO NEW ANCHOR AT 7.5M LEAD AT POLE 43
 111
 PLACE 1.5" SIZE DOWN GUY FROM LOWER STRAND HEIGHT TO NEW ANCHOR AT 6.0M LEAD AT POLE 43
 112
 PLACE 1.5" SIZE DOWN GUY FROM 300MM ANCHOR AT 6.0M LEAD AT POLE 43
 113
 SLACK SPAN 3 STRANDS (20M) POLE 43 TO POLE 40
 922

REMOVE OLD POLE 42
 02689721
 59' CLZ 1 PLACED 2015 AUG 11

NEW ANCHORS BY BCH
 7.5M & 6.0M 2500GR/PLATE

TRANSFER STRANDS (2) POLE 42 TO POLE 43
 121
 TRANSFER STRANDS (2) POLE 41 TO POLE 40
 122
 BCH TO PLACE POLE 40
 59' CLZ ON DESIGN 0004136512

TRANSFER STRANDS (2) POLE 41 TO POLE 40
 923
 CUT OFF OLD ANCHOR (1) AT POLE 42
 924
 CONTINUE ON SHEET 2

BCH TO PLACE POLE 43
 59' CLZ ON DESIGN 0004136512

REMOVE OLD POLE 40
 02689721
 59' CLZ 1 PLACED 2015 AUG 11

REMOVE OLD POLE 42
 02689721
 59' CLZ 1 PLACED 2015 AUG 11

REMOVE OLD POLE 42
 02689721
 59' CLZ 1 PLACED 2015 AUG 11

REMOVE OLD POLE 42
 02689721
 59' CLZ 1 PLACED 2015 AUG 11

REMOVE OLD POLE 42
 02689721
 59' CLZ 1 PLACED 2015 AUG 11

REMOVE OLD POLE 42
 02689721
 59' CLZ 1 PLACED 2015 AUG 11

REMOVE OLD POLE 42
 02689721
 59' CLZ 1 PLACED 2015 AUG 11

REMOVE OLD POLE 42
 02689721
 59' CLZ 1 PLACED 2015 AUG 11

REMOVE OLD POLE 42
 02689721
 59' CLZ 1 PLACED 2015 AUG 11

REMOVE OLD POLE 42
 02689721
 59' CLZ 1 PLACED 2015 AUG 11

REMOVE OLD POLE 42
 02689721
 59' CLZ 1 PLACED 2015 AUG 11

REMOVE OLD POLE 42
 02689721
 59' CLZ 1 PLACED 2015 AUG 11

REMOVE OLD POLE 42
 02689721
 59' CLZ 1 PLACED 2015 AUG 11

REMOVE OLD POLE 42
 02689721
 59' CLZ 1 PLACED 2015 AUG 11

REMOVE OLD POLE 42
 02689721
 59' CLZ 1 PLACED 2015 AUG 11

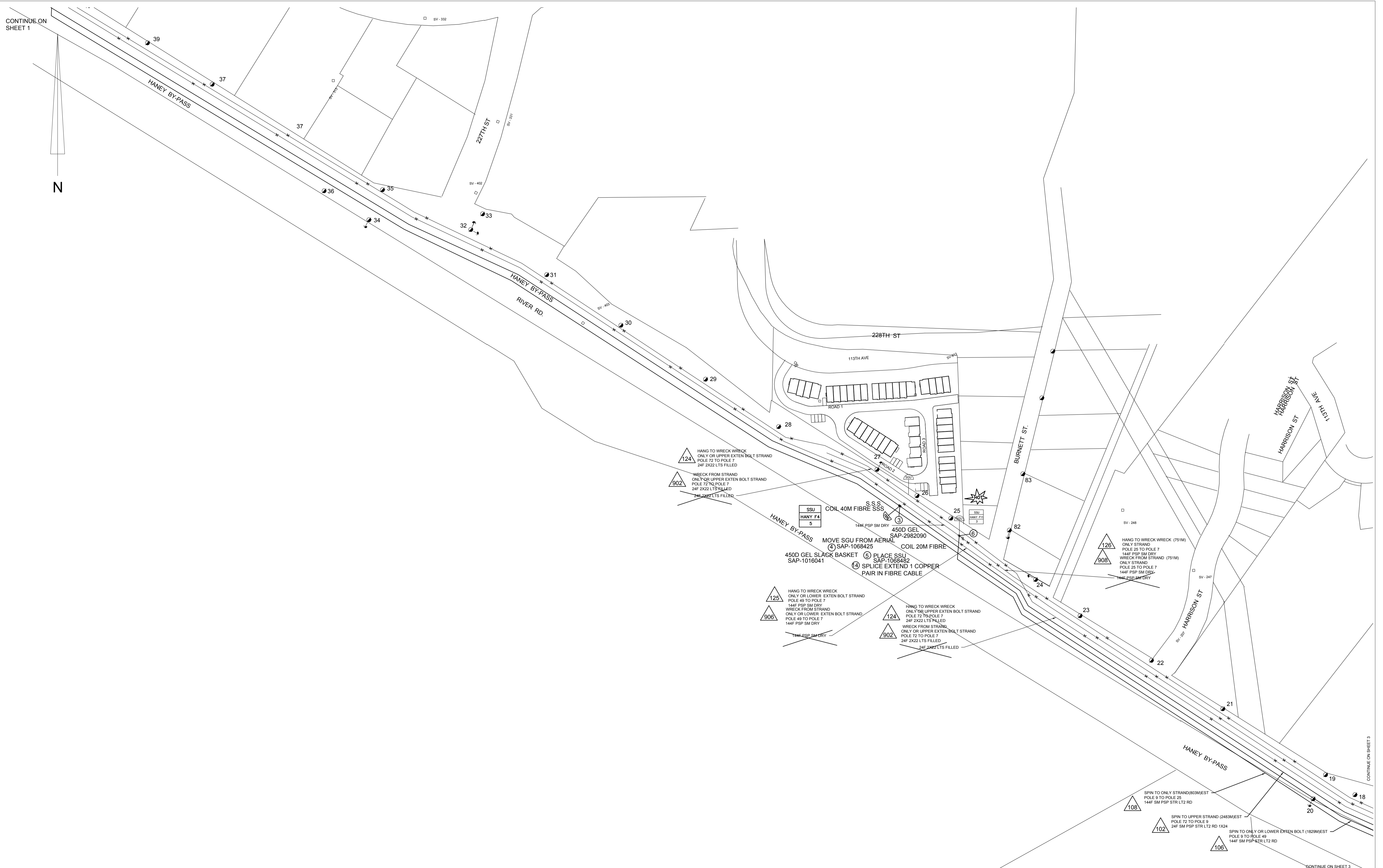
REMOVE OLD POLE 42
 02689721
 59' CLZ 1 PLACED 2015 AUG 11

REMOVE OLD POLE 42
 02689721
 59' CLZ 1 PLACED 2015 AUG 11

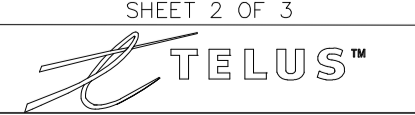
REMOVE OLD POLE 42
 02689721
 59' CLZ 1 PLACED 2015 AUG 11

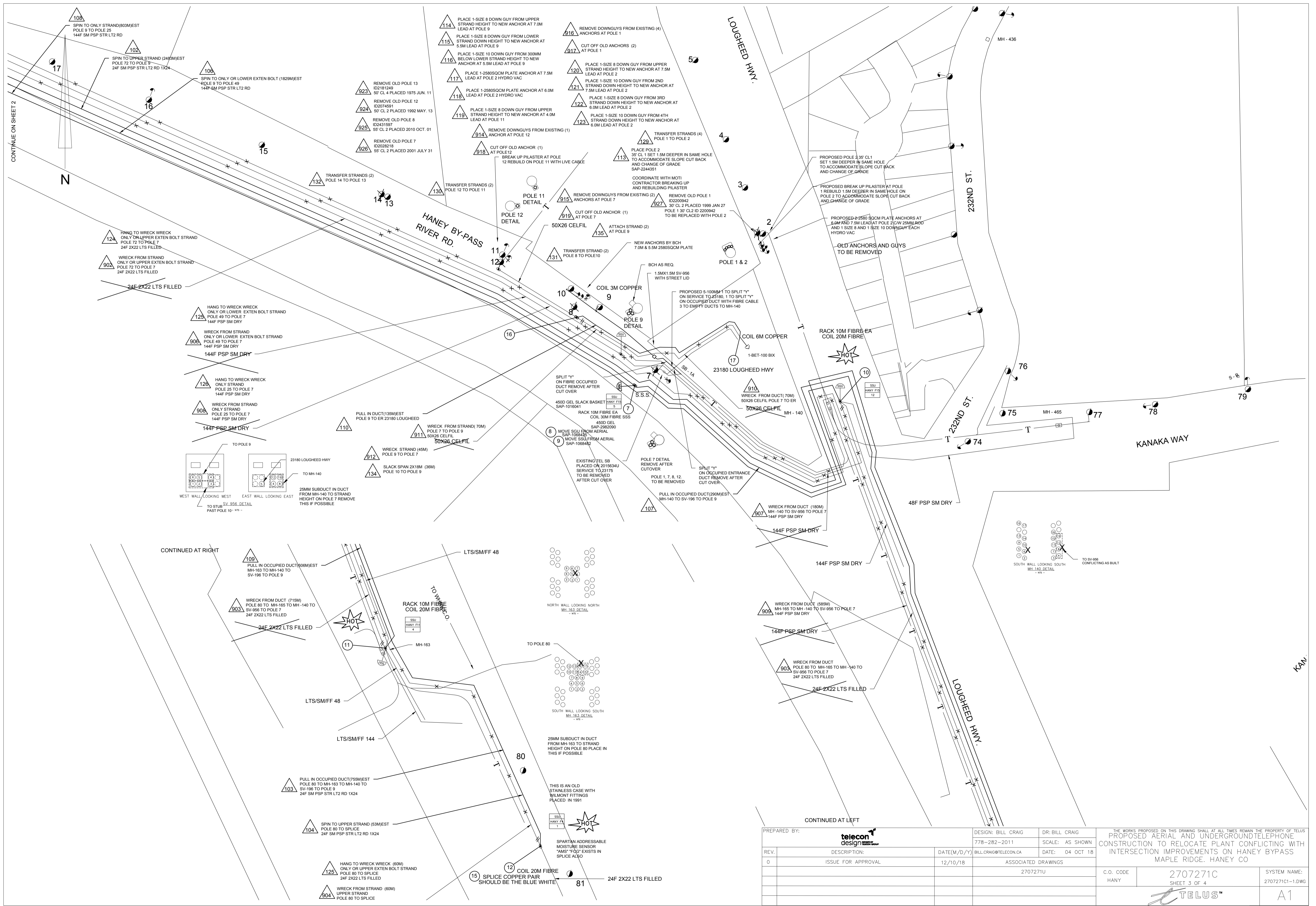
CONTINUE ON SHEET 1

N



PREPARED BY:		DESIGN: BILL CRAIG		DR: BILL CRAIG		THE WORKS PROPOSED ON THIS DRAWING SHALL AT ALL TIMES REMAIN THE PROPERTY OF TELUS	
telecon design		778-282-2011		SCALE: AS SHOWN		PROPOSED AERIAL AND UNDERGROUND TELEPHONE CONSTRUCTION TO RELOCATE PLANT CONFLICTING WITH INTERSECTION IMPROVEMENTS ON HANEY BYPASS MAPLE RIDGE, HANEY CO	
REV.	DESCRIPTION:	DATE (M/D/Y)	BILL.CRAIG@TELECON.CA	DATE:	04 OCT 18	C.O. CODE	2707271C
0	ISSUE FOR APPROVAL	12/10/18	ASSOCIATED DRAWINGS			HANEY	SHEET 2 OF 3
			2707271U				2707271C1-1.DWG
							SYSTEM NAME:
							A1





PREPARED BY: telecon design		DESIGN: BILL CRAIG	DR: BILL CRAIG	THE WORKS PROPOSED ON THIS DRAWING SHALL AT ALL TIMES REMAIN THE PROPERTY OF TELUS	
REV. 0		DATE(M/D/Y): 12/10/18	SCALE: AS SHOWN	PROPOSED AERIAL AND UNDERGROUND TELEPHONE CONSTRUCTION TO RELOCATE PLANT CONFLICTING WITH INTERSECTION IMPROVEMENTS ON HANEY BYPASS MAPLE RIDGE, HANEY CO	
ISSUE FOR APPROVAL		ASSOCIATED DRAWINGS	DATE: 04 OCT 18	C.O. CODE	SYSTEM NAME:
		270727IU		HANEY	270727IC
					270727IC-1.DWG
				TELUS	A1