

MATCH ABOVE

MATCH ABOVE

MATCHLINE TO SHEET 5

MATCHLINE TO SHEET 5

432F METER MARKS
2479m - 2505m

432F METER MARKS
2671m - 2693m

432F METER MARKS
2851m

432F METER MARKS
2926m - 2956m

432F METER MARKS
3004m

432F METER MARKS
DUCT:3075m
END: 3102m

EXISTING ITS
VAULT (V2-5)

EXISTING ITS
VAULT (V2-6)

EXISTING ITS
VAULT (V2-7)

REEL END: 432F

75m APPROX.

432F METER MARKS
DUCT: 3388m
END: 3418m

375m APPROX.

125m APPROX.

85m APPROX.

350m APPROX.

265m APPROX.

REEL END: 144F

PLACE 432 & 144 COUNT FIBER
OPTIC CABLE IN EXISTING ITS
UNDERGROUND STRUCTURE

144F METER MARKS
935m - 962m

144F METER MARKS
DUCT: 777m
END : 751m

EXISTING ITS
VAULT (V2-8)

EXISTING ITS
VAULT (V2-10)

PLACE 432 & 144 COUNT FIBER
OPTIC CABLE IN EXISTING ITS
UNDERGROUND STRUCTURE

144F METER MARKS
1151m - 1131m

PLACE 432 & 144 COUNT FIBER
OPTIC CABLE IN EXISTING ITS
UNDERGROUND STRUCTURE

144F METER MARKS
DUCT: 4623m
END : 4680m

PLACE 432 & 144 COUNT FIBER
OPTIC CABLE IN EXISTING ITS
UNDERGROUND STRUCTURE

144F METER MARKS
4501m

144F METER MARKS
4427m - 4402m

144F METER MARKS
4540m

HWY 99

HWY 99

BURNS RD

SFPR

SFPR



PLACE 4-32mm HDPE
& INSTALL 1-FFSM48 FIBRE
SINGLE ARMoured CABLE.

- CONDUIT 1 ORANGE/PURPLE
- CONDUIT 2 ORANGE/GREEN
- CONDUIT 3 ORANGE/YELLOW
- CONDUIT 4 ORANGE-MOTH



SOLID WHITE LINE

DEFLECT BACK
TO 50m OFFSET

HWY 17

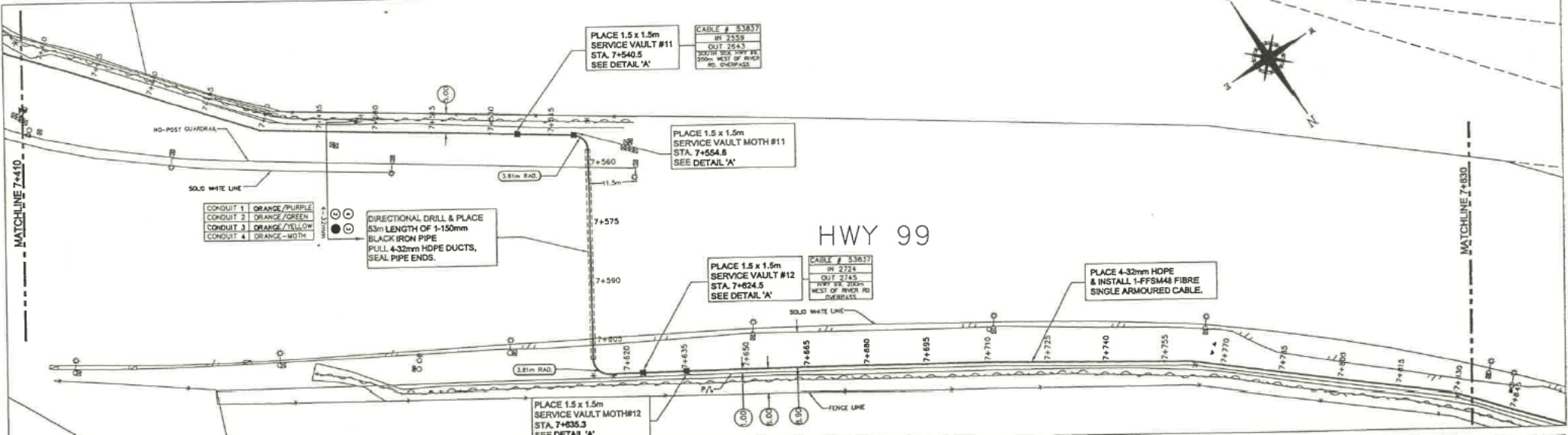
SCALE: 1:500



(ALL DIMENSIONS ARE IN METRES)

MATCHLINE 7+05

MATCHLINE 7+10



PLACE 1.5 x 1.5m
SERVICE VAULT #11
STA. 7+540.5
SEE DETAIL 'A'

CABLE # 53837
IN 2559
OLT 2043
300m WEST OF HWY 99
100m WEST OF HWY 99
100m WEST OF HWY 99
100m WEST OF HWY 99

PLACE 1.5 x 1.5m
SERVICE VAULT MOTH #11
STA. 7+554.8
SEE DETAIL 'A'

DIRECTIONAL DRILL & PLACE
53m LENGTH OF 1-150mm
BLACK IRON PIPE
PULL 4-32mm HDPE DUCTS,
SEAL PIPE ENDS.

PLACE 1.5 x 1.5m
SERVICE VAULT #12
STA. 7+624.5
SEE DETAIL 'A'

CABLE # 53837
IN 2724
OLT 2145
300m WEST OF HWY 99
100m WEST OF HWY 99
100m WEST OF HWY 99
100m WEST OF HWY 99

PLACE 4-32mm HDPE
& INSTALL 1-FFSM48 FIBRE
SINGLE ARMoured CABLE.

PLACE 1.5 x 1.5m
SERVICE VAULT MOTH#12
STA. 7+635.3
SEE DETAIL 'A'

HWY 99



MATCHLINE 7+410

MATCHLINE 7+800

HO-POST QUADRANTAL

SOLID WHITE LINE

3.81m RAD.

1.5m

7+575

7+590

7+605

7+620

7+635

7+650

7+665

7+680

7+695

7+710

7+725

7+740

7+755

7+770

7+785

7+800

SOLID WHITE LINE

FENCE LINE

