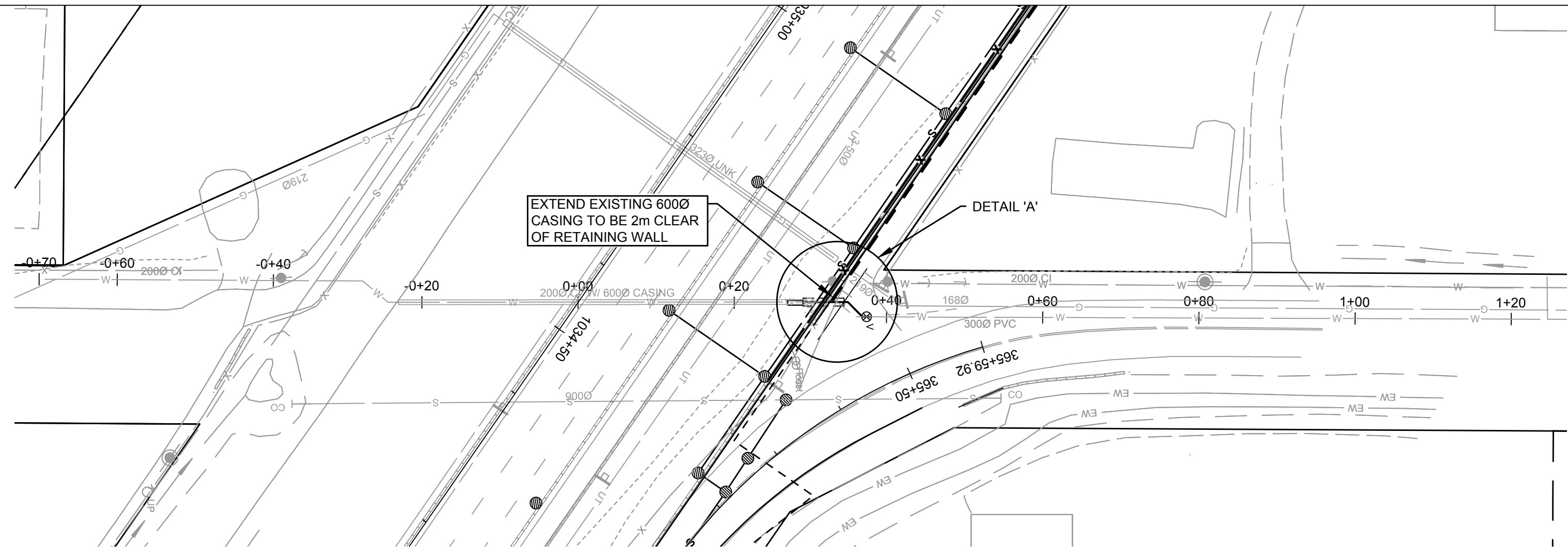
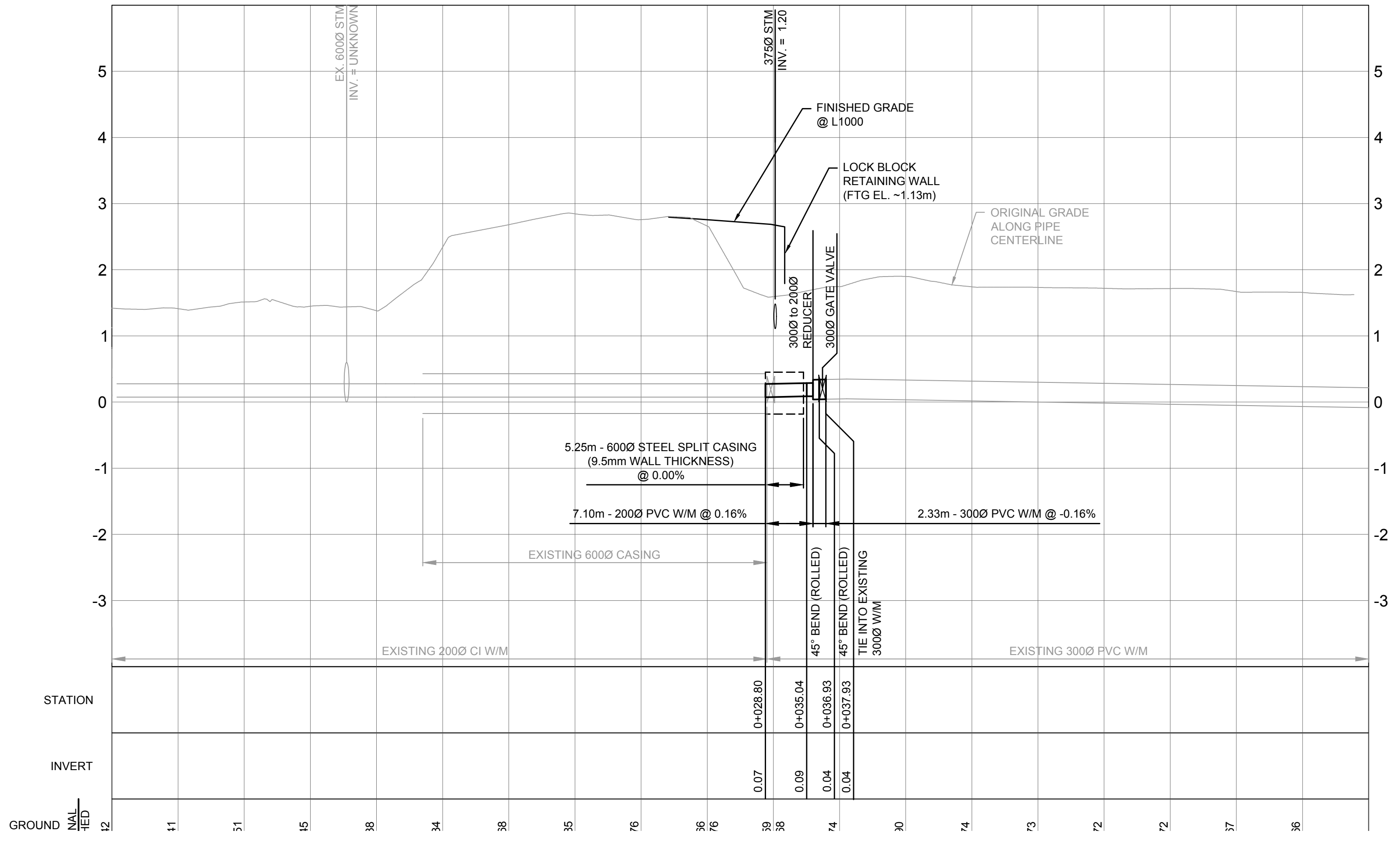


**DETAIL 'A'**  
SCALE N.T.S.

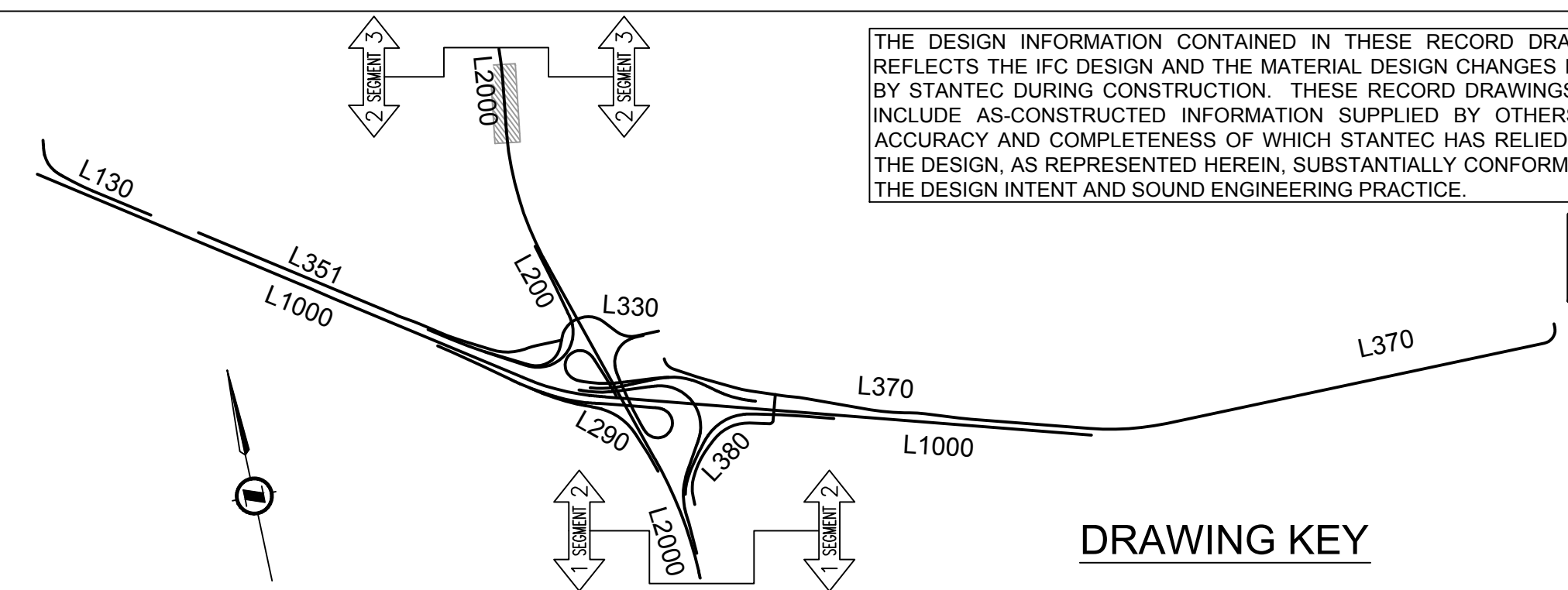
- KEYNOTES:**
- ① TIE-IN TO EXISTING 2000 CI WATERMAIN  
1 - 2000 PVC x CI ROBAR COUPLING ADAPTER
  - ② 2000 45° ROLLED ELBOW
  - ③ 3000 x 2000 REDUCER
  - ④ 3000 45° ROLLED ELBOW
  - ⑤ TIE-IN EXISTING 3000  
1 - 3000 GATE VALVE  
1 - 3000 ROBAR COUPLING
  - ⑥ TIE-IN TO EXISTING 6000 CSP CASING WITH RUBBER GASKETED CORRUGATED COUPLER.



- TYPICAL NOTES:**
1. RESTRAIN ALL JOINTS / FITTINGS WITH BELL RESTRAINERS, EBAA 1100HV OR EQUIVALENT FOR PVC PIPE.
  2. ALL TIE-IN LOCATIONS TO BE CONFIRMED IN ADVANCE OF CONSTRUCTION.
  3. ALL PVC WATERMAIN MATERIALS AND CONSTRUCTION TO BE IN ACCORDANCE WITH MMCD SPECIFICATIONS AND CORPORATION OF DELTA SUPPLEMENTARY SPECIFICATIONS, STANDARD DRAWINGS AND DESIGN CRITERIA.
  4. ALL WATERMAIN TO BE POLYETHYLENE ENCASED TO AWWA C105.
  5. CONNECTION TO EXISTING WATERMAIN TO BE COMPLETED BY CORPORATION OF DELTA OPERATIONS OR UNDER THE INSPECTION OF CORPORATION OF DELTA OPERATIONS, AS APPROVED BY THE CORPORATION OF DELTA ENGINEERING DEPT.
  6. HYDRO-STATICALLY TEST AND CHLORINATE ALL NEW WATERMAINS PRIOR TO ACCEPTANCE AFTER CONTRACTOR'S PRE-TEST.
  7. WATERMAIN RE-ALIGNMENT COMPLETED WITH OFFSET BENDS TO ACCOMMODATE PRE-LOAD SETTLEMENT. INSTALL SETTLEMENT MONITORS AT HORIZONTAL BENDS AND TIE-IN LOCATIONS. MONITOR ELEVATION CHANGES IN WATERMAIN AND TRACK AGAINST DESIGN SETTLEMENT ALLOWED FOR ON ORIGINAL WATERMAIN DRAWINGS.
  8. WRAP ALL WATERMAIN JOINTS 3.00M EITHER SIDE OF SEWER CROSSING IN ACCORDANCE WITH AWWA STANDARDS C216 OR C217. REFER TO CORPORATION OF DELTA UTILITIES MASTER SPECIFICATIONS.
  9. PROVIDE THRUST BLOCKS FOR ALL TEES, BENDS, FLEX EXPANSION JOINTS, AND REDUCERS EXCEPT FOR RESTRAINED JOINT PIPE.
  10. PROVIDE CATHODIC PROTECTION TO PERMANENT INSTALLATION IN ACCORDANCE WITH CORPORATION OF DELTA STANDARD DETAIL L 4.8
  11. PROVIDE CAMBER IN CASING PIPES IN ACCORDANCE WITH GEOTECHNICAL ENGINEER'S RECOMMENDATIONS.



**L1000 @ STA 1034+54**



THE DESIGN INFORMATION CONTAINED IN THESE RECORD DRAWINGS REFLECTS THE IFC DESIGN AND THE MATERIAL DESIGN CHANGES ISSUED BY STANTEC DURING CONSTRUCTION. THESE RECORD DRAWINGS ALSO INCLUDE AS-CONSTRUCTED INFORMATION SUPPLIED BY OTHERS, THE ACCURACY AND COMPLETENESS OF WHICH STANTEC HAS RELIED UPON. THE DESIGN, AS REPRESENTED HEREIN, SUBSTANTIALLY CONFORMS WITH THE DESIGN INTENT AND SOUND ENGINEERING PRACTICE.

THIS DRAWING WAS SIGNED AND SEALED BY  
GARRY ROMANETZ, # 20356, ON 2 JUNE 2014.

**RECORD**

INFORMATION SHOWN ON THESE DRAWINGS REGARDING EXISTING UTILITIES IS COMPILED FROM SOME RECORD DRAWINGS AND SOME SURVEYS, AND MAY NOT BE COMPLETE OR FULLY ACCURATE. PRIOR TO CONSTRUCTION THE CONTRACTOR SHALL EXPOSE AND CONFIRM THE LOCATIONS AND ELEVATIONS OF ALL EXISTING UTILITIES AND ADVISE THE DESIGNER OF ANY POTENTIAL CONFLICTS.

DRAWING REFERENCE	
HWY PLAN	04830-10-ST-0000-D2-111
HWY PROFILE	N/A
WATER	N/A
SANITARY	N/A
DRAINAGE	04830-30-ST-0000-D2-224
ELECTRICAL	04830-50-ST-0000-D2-124



SCALE: 0 5 25m H 1:500 V 1:100  
CAD FILENAME: 04830-20-ST-0000-D2-126.DWG  
DATE: May 09, 2011

REV	DATE	REVISIONS	SIGNATURE
0	2012.10.24	ISSUED FOR CONSTRUCTION / ISSUED FOR SH-20-ST-2-0319	G. ROMANETZ
1	2014.05.01	RECORD DRAWING	G. ROMANETZ



8100 NORDEL WAY  
DELTA, BC, CANADA  
V4C 3A6

**SOUTH FRASER PERIMETER ROAD**  
SEGMENT 2  
PLAN & PROFILE - WATER UTILITIES CROSSING  
L1000 @ STA 1034+54

DESIGNED	RW	DATE	2011-08-02
QUALITY CONTROL	GKR	DATE	2014-05-01
QUALITY ASSURANCE	JS	DATE	2014-05-01
DRAWN	ED	DATE	2011-08-02

PLOTTED 2014/06/02 @ 9:27 AM BY Louie, Angela  
G:\Drawing\Bep2\Sheet\_100\_Plans\04830-20-ST-0000-D2-126.dwg

CANCEL PRINTS BEARING PREVIOUS LETTER OR NUMBER