

**FOR MINISTRY USE ONLY**  
REFER TO DRAWING SERIES  
TE-96033 SHEET 1 FOR  
CONTINUATION OF LIGHTING

**DO NOT USE THIS DRAWING FOR  
PAVEMENT MARKING OR  
SIGNING STANDARDS**

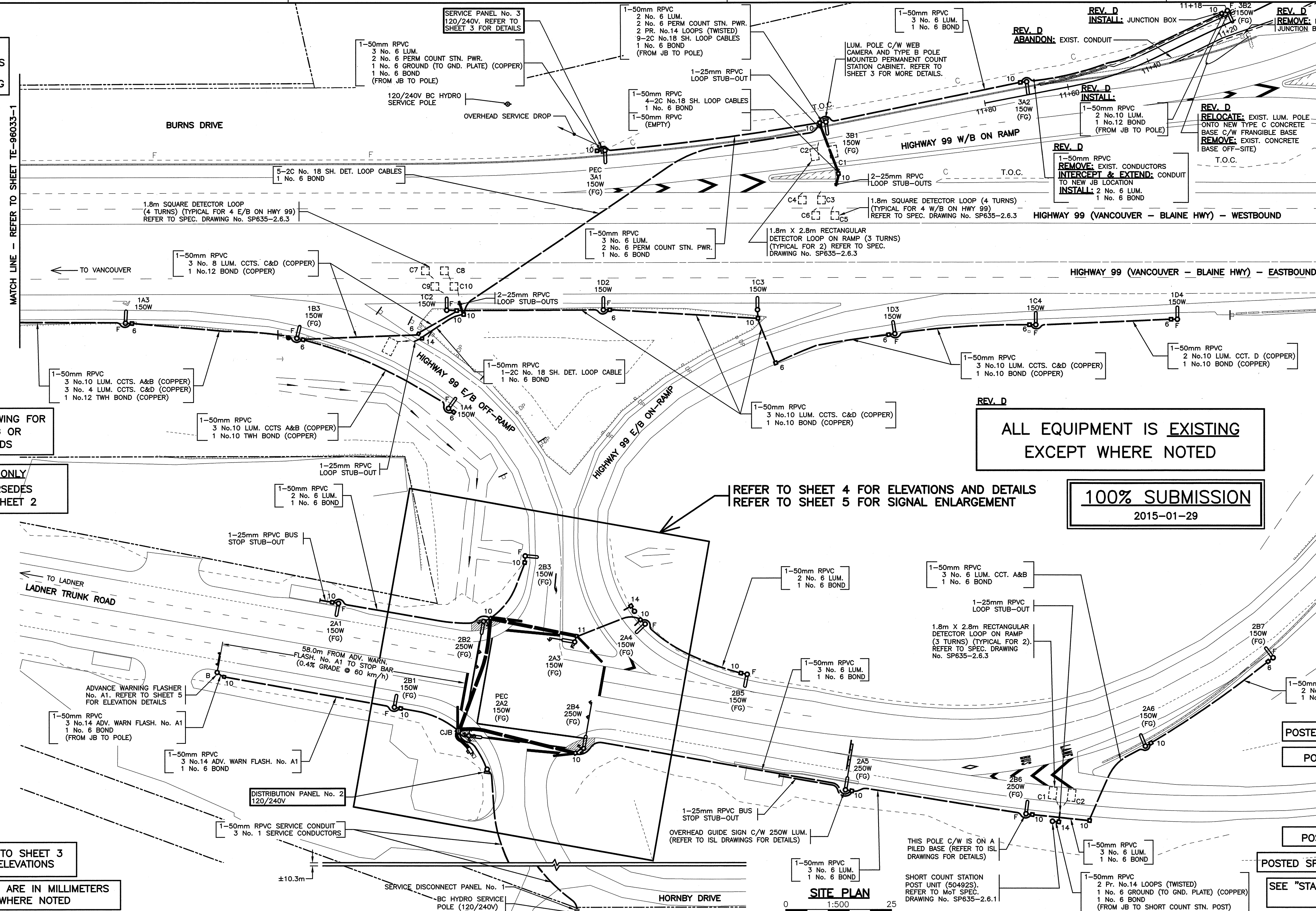
**FOR MINISTRY USE ONLY**  
THIS DRAWING SUPERSEDES  
DRAWING TE-96033 SHEET 2

REFER TO SHEET 3  
FOR ELEVATIONS

ALL DIMENSIONS ARE IN MILLIMETERS  
EXCEPT WHERE NOTED

MATCH LINE - REFER TO SHEET TE-96033-1

MATCH LINE - REFER TO SHEET 2 - A



**ALL EQUIPMENT IS EXISTING  
EXCEPT WHERE NOTED**

**100% SUBMISSION**  
2015-01-29

REFER TO SHEET 4 FOR ELEVATIONS AND DETAILS  
REFER TO SHEET 5 FOR SIGNAL ENLARGEMENT

**SITE PLAN**  
1:500

- REV. D NOTES**
- ALL WORK SHALL BE DONE IN ACCORDANCE WITH THE CURRENT STANDARD SPECIFICATIONS FOR HIGHWAY CONSTRUCTION AND THE ELECTRICAL STANDARD PROVISIONS ISSUED WITH THIS CONTRACT.
  - CONDUCTORS FROM JUNCTION BOX TO LUMINAIRE POLE SHALL BE:  
1 No.10 RW90 (COPPER) - 50mm RPVC (UNLESS OTHERWISE NOTED)  
1 No.12 RW90 (COPPER)
  - ALL CONDUITS FROM JUNCTION BOXES TO BASES ARE TO BE 50mm RPVC.
  - JUNCTION BOXES SHALL BE POSITIONED BEHIND OR, AS AN ALTERNATIVE, TO THE SIDE, BUT NOT IN FRONT OF POLES.
  - EACH SHIELDED CABLE SHALL RUN CONTINUOUS WITH NO SPLICES, FROM THE CONTROLLER TO THE RESPECTIVE LOOP.
  - ALL SIGNAL HEAD SECTIONS SHALL BE WIRED SEPARATELY FROM THE HANDLE OF THE POLE TO EACH HEAD INCLUDING A SEPARATE NEUTRAL AND BONDING CONDUCTOR FOR EACH HEAD.
  - LUMINAIRE NUMBERING EXAMPLE: 1A2  
SERVICE No. - 1 OCT. LETTER - A LUM. No. - 2
  - WHERE POSSIBLE, POLES SHALL BE POSITIONED WITH THE HANDHOLE IN THE BACK OR IF NOT POSSIBLE, ON THE DOWNSTREAM TRAFFIC SIDE.
  - ALL CONCRETE BASES AND JUNCTION BOX SYMBOLS ARE NOT TO SCALE.
  - THE CONTRACTOR SHALL NOT PRE-DRILL HOLES IN A SIGNAL POLE UNTIL AFTER THE BASE FOR THAT POLE HAS BEEN INSTALLED. THE CONTRACTOR SHALL ADVISE THE MINISTRY REPRESENTATIVE OF ANY ADJUSTMENTS MADE TO THE BASE LOCATION WHICH WILL EFFECT THE LOCATIONS OF HARDWARE TO BE MOUNTED ON THAT POLE PRIOR TO DRILLING.
  - WHERE THREE OR MORE SECONDARY/PEDESTRIAN HEADS ARE BEING MOUNTED ON THE POLE SHAFT, ORIENT THE PEDESTRIAN HEAD MOUNTING BRACKETS WITH THE WIREWAY ON TOP.
  - WHERE TWO OR MORE SECONDARY HEADS ARE BEING MOUNTED IN THE SAME SHAFT, ALL SECONDARY HEADS SHALL HAVE TUNNELS.
  - ALL NEW JUNCTION BOXES SHALL HAVE STEEL LIDS.
  - ALL NEW POWER, LIGHTING AND BONDING CONDUCTORS SHALL BE RW90 ALUMINUM. ALL NEW SIGNAL, GROUND, EMERG. PRE-EMPT. SENSOR AND DETECTOR LOOP CABLES/CONDUCTORS SHALL BE RW90 STRANDED COPPER.
  - ALL CONNECTIONS FOR STREET LIGHTING CONDUCTORS IN JUNCTION BOXES SHALL BE COMPLETED WITH COMPRESSION BLOCK TYPE CONNECTIONS (BURNDY OR APPROVED EQUAL) RATED FOR USE WITH ALUMINUM TO COPPER CONNECTIONS. ALL CONNECTIONS ARE TO HAVE "PENETROX" ELECTRICAL JOINT COMPOUND.

- FUTURE CONCRETE BASE AND LUMINAIRE POLE (SINGLE)
- LUMINAIRE POLE (SINGLE) 'F' DENOTES FRANGIBLE BASE
- LUMINAIRE POLE (DOUBLE)
- PRIVATE LUMINAIRE (BASE VARIABLE)
- POST TOP MOUNTED LUMINAIRE
- WALL MOUNTED LUMINAIRE
- JUNCTION BOX - No. DENOTES TYPE
- CONCRETE JUNCTION BOX OR VAULT

- SIGNAL POLE WITH SIGNAL HEAD MOUNTED ON SIDE
- COMBINATION LUMINAIRE/TRAFFIC SIGNAL POLE
- ILLUMINATED SIGN WITH AMBER FLASHERS
- COMBINATION LUMINAIRE/ILLUMINATED SIGN WITH AMBER FLASHERS
- SIGN POLE (NON-ILLUMINATED)
- ILLUMINATED SIGN POLE
- COMBINATION LUMINAIRE/NON-ILLUMINATED SIGN
- COMBINATION LUMINAIRE/ILLUMINATED SIGN

- LEGEND**
- PEC PHOTO ELECTRIC CELL
  - RPVC RIGID P.V.C. CONDUIT
  - R.C. RIGID STEEL CONDUIT
  - F.C. FLEXIBLE CONDUIT (LIQUID TIGHT)
  - OVERHEAD FLASHING BEACON
  - POST MOUNTED FLASHER
  - BACKGUY
  - POWER POLE
  - TELEPHONE POLE
  - POWER/TELEPHONE POLE
  - SIGNAL HEAD VEHICLE PHASE (A,B,A1, A2(T))
  - SIGNAL HEAD PEDESTRIAN PHASE (PA,PB, PA1,PB2)
  - ppb PEDESTRIAN PUSHBUTTON

- TEST SWITCH
- BREAKER
- NEUTRAL BAR
- DIAMOND DETECTOR LOOP (WITH LOOP LEADER)
- PRE-FORMED DETECTOR LOOP
- ROUND DETECTOR LOOP
- RECTANGULAR COUNT LOOP
- QUADRAPOLE DETECTOR LOOP

- RAISED CURB
- PROPERTY LINE
- EDGE OF GRAVEL SHOULDER
- EDGE OF PAVEMENT
- PAINT LINE
- FUTURE ELECTRICAL AND GEOMETRICS
- ELECTRICAL EQUIPMENT TO BE REMOVED
- PROPOSED UNDERGROUND CONDUIT
- EXISTING UNDERGROUND CONDUIT
- FENCE
- CORRUGATED METAL PIPE (CULVERT)
- U/G UTILITY:  
'G' DENOTES GAS  
'S' DENOTES STORM DRAINS/SEWERS  
'W' DENOTES WATER  
'UE' DENOTES ELECTRIC  
'UT' DENOTES TELEPHONE  
'SAN' DENOTES SANITARY SEWER

**DMD & Associates Ltd.**  
#12-17358 104A Avenue, Surrey, BC, Canada V4N 5M3  
www.dmdeng.com 604/589-9010  
office@dmdeng.com Fax 604/589-9012  
DMD PROJECT No. 4592-14-04 of 04

REV	DATE	REVISIONS	DRAWN
-	MAR/13	DRAWING ISSUED	BK
A	APR/13	LUM. POLE DELETED AND LUM. ARM AND LUM. MOVED TO SIGN POLE	ML
B	MAY/13	REMOVED REFERENCE TO RELOCATION OF PERM. COUNT STATION	ML
C	DEC/14	RECORD DRAWING	AM
D	DEC/14	LUM. POLE RELOCATED	ER

**BRITISH COLUMBIA** MINISTRY OF TRANSPORTATION AND INFRASTRUCTURE ELECTRICAL ENGINEERING CENTRE

MOBILE WEIGH SCALES (SITE 9B)  
HIGHWAY 99 (VANCOUVER-BLAINE HWY) AT 96 STREET AND AT HIGHWAY 10 (LADNER TRUNK ROAD) MATTHEWS INTERCHANGE EAST - DELTA

**NOTES - SITE PLAN - LEGEND**

DESIGNED	ER	DATE	DEC/14
QUALITY CONTROL	MC	DATE	DEC/14
QUALITY ASSURANCE	MC	DATE	DEC/14
TRAN ELECTRICAL DESIGN REVIEW	DL	DATE	Jan/16

DATE: 2015-01-29  
SHEET NUMBER: 1 OF 1  
SITE CODE: 1 1  
HWY DIST: 1  
REG: 1  
DRAWING NUMBER: TE-12080-1

CANCEL PRINTS BEARING PREVIOUS LETTER