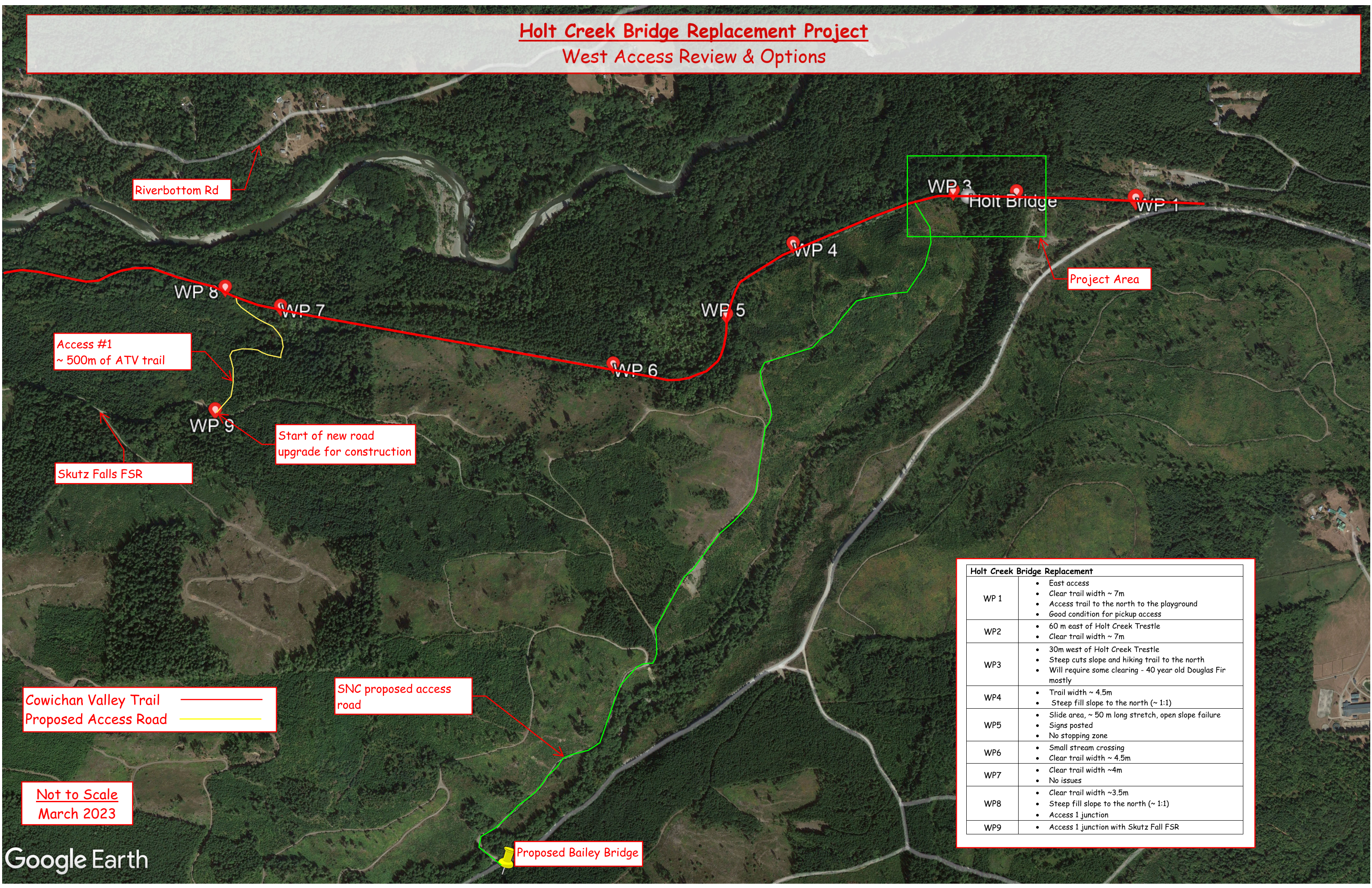


# Holt Creek Bridge Replacement Project

## West Access Review & Options



Holt Creek Bridge Replacement	
WP 1	<ul style="list-style-type: none"> <li>• East access</li> <li>• Clear trail width ~ 7m</li> <li>• Access trail to the north to the playground</li> <li>• Good condition for pickup access</li> </ul>
WP2	<ul style="list-style-type: none"> <li>• 60 m east of Holt Creek Trestle</li> <li>• Clear trail width ~ 7m</li> </ul>
WP3	<ul style="list-style-type: none"> <li>• 30m west of Holt Creek Trestle</li> <li>• Steep cuts slope and hiking trail to the north</li> <li>• Will require some clearing - 40 year old Douglas Fir mostly</li> </ul>
WP4	<ul style="list-style-type: none"> <li>• Trail width ~ 4.5m</li> <li>• Steep fill slope to the north (~ 1:1)</li> </ul>
WP5	<ul style="list-style-type: none"> <li>• Slide area, ~ 50 m long stretch, open slope failure</li> <li>• Signs posted</li> <li>• No stopping zone</li> </ul>
WP6	<ul style="list-style-type: none"> <li>• Small stream crossing</li> <li>• Clear trail width ~ 4.5m</li> </ul>
WP7	<ul style="list-style-type: none"> <li>• Clear trail width ~4m</li> <li>• No issues</li> </ul>
WP8	<ul style="list-style-type: none"> <li>• Clear trail width ~3.5m</li> <li>• Steep fill slope to the north (~ 1:1)</li> <li>• Access 1 junction</li> </ul>
WP9	<ul style="list-style-type: none"> <li>• Access 1 junction with Skutz Fall FSR</li> </ul>

Access #1  
~ 500m of ATV trail

Start of new road  
upgrade for construction

Cowichan Valley Trail  
Proposed Access Road

SNC proposed access  
road

Not to Scale  
March 2023

Proposed Bailey Bridge



# Holt Creek Bridge Replacement Project

## West Access Review & Options

[Redacted]

Riverbottom Rd

Holt Creek Bridge Replacement	
WP 15	<ul style="list-style-type: none"> <li>Active stream crossing with small sized culvert</li> <li>Clear trail width ~ 3m</li> <li>Road prism narrowed through the crossing</li> </ul>
WP 16	<ul style="list-style-type: none"> <li>BC hydro RoW</li> </ul>
WP 17	<ul style="list-style-type: none"> <li>Small area of poor drainage with road prism saturated</li> <li>~ 30 m stretch</li> <li>Will require drainage ditch and/or culvert and reconstruction of the road prism and capping ( 2-3 loads of granular and capping)</li> </ul>
WP 18	<ul style="list-style-type: none"> <li>Culvert repaired in 2019 (?)</li> <li>From this location to Riverbottom Rd. the trail is in excellent condition for industrial use</li> </ul>

WP 18

WP 17

WP 16

WP 15

Access #1  
~ 500m of ATV trail

WP 8

WP 12 WP 14  
WP 13

WP 11

WP 10

WP 9

Skutz Falls FSR

Access #1  
~ 500m of ATV trail

Cowichan Valley Trail ———  
Proposed Access Road ———

Not to Scale  
March 2023



# Holt Creek Bridge Replacement Project

## West Access Review & Options

Holt Creek Bridge Replacement	
WP 19	<ul style="list-style-type: none"> <li>• Bridge crossing</li> <li>• 3 - span steel girder with timber deck</li> <li>• Girders and deck in fair condition</li> <li>• Will need assessment for construction access - good for pickup access</li> </ul>
WP 20	<ul style="list-style-type: none"> <li>• Access 2 junction</li> </ul>
WP 21	<ul style="list-style-type: none"> <li>• Bridge crossing</li> <li>• Girders and deck in fair condition</li> <li>• Will need assessment for construction access - good for pickup access</li> </ul>
WP 22	<ul style="list-style-type: none"> <li>• Access 2 junction with Skutz Fall FSR</li> <li>• ~ 1km of road upgrade for construction access</li> </ul>
Gate	<ul style="list-style-type: none"> <li>• End or trail junction with Riverbottom Rd.</li> </ul>

JCT 0+000 Skutz Falls FSR

Gate - JCT

Riverbottom Rd

WP 21

WP 20

WP 19

Skutz Falls FSR

Access Point 2  
~ 1km of ATV trail

Start of new road  
upgrade for construction

WP 22

Cowichan Valley Trail  
Proposed Access Road

Spur Road 0+000

Not to Scale  
March 2023