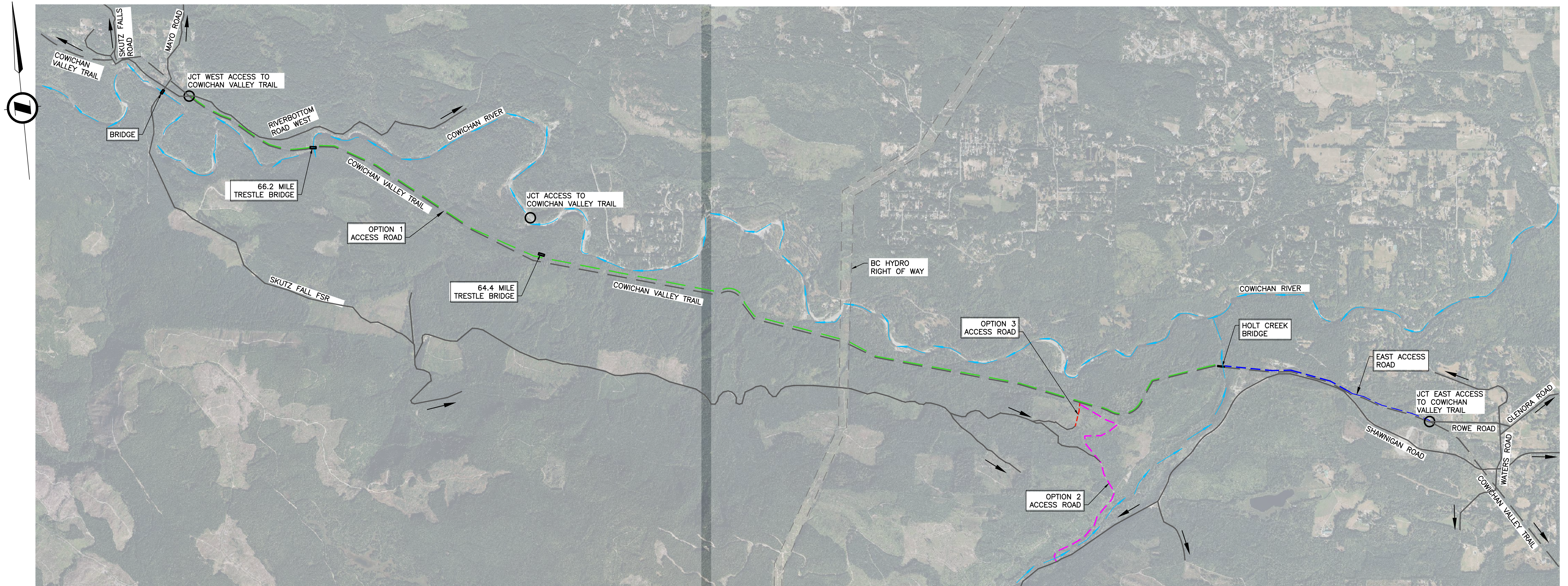


PLOT DATE: 2024/07/02 H:\DATA\670417 - Holt Creek - Detailed Design\41 - Civil Engineering\41DD - Drawings\10543-SK1.dwg



STRUCTURE	GOVERNING EVALUATION SCENARIO			RECOMMENDED POSTED LOADS			
	LOAD CASE	COMPONENT	FAILURE MODE	G.V.W.	SINGLE AXLE	TANDEM AXLE	TRIDEM AXLE
64.4 MILE TRESTLE	CL1-625	CROSS-TIES	BENDING MOMENT AT MIDSPAN	39 TONNES	6 TONNES	11 TONNES	15 TONNES
66.2 MILE TRESTLE	CL1-625	CROSS-TIES	BENDING MOMENT AT MIDSPAN	54 TONNES	8 TONNES	16 TONNES	21 TONNES

PLAN
SCALE 1:20000

LEGEND:

- EXISTING ROAD
- RIVER
- EXISTING TRAIL
- OPTION 1 ACCESS ROAD
- OPTION 2 ACCESS ROAD
- OPTION 3 ACCESS ROAD
- EAST ACCESS ROAD



PRELIMINARY
DO NOT USE FOR CONSTRUCTION

1100 - 745 Thurlow Street
 Vancouver, BC, Canada, V6E 0C5
 Telephone: 604-662-3555

Rev	Date	Description	Init
B	2024/07/02	ISSUED FOR REPORT	AL
A	2024/06/28	ISSUED FOR REPORT	AL

REVISIONS

**Ministry of Transportation
& Infrastructure**
South Coast Region

VANCOUVER ISLAND DISTRICT
COWICHAN VALLEY TRAIL
HOLT CREEK BRIDGE No. 10543 REPLACEMENT
ACCESS ROAD

PREPARED UNDER THE DIRECTION OF		DESIGNED	AL	DATE	24/06/28
ENGINEER OF RECORD		CHECKED	EY	DATE	24/06/28
DATE		SCALE		AS NOTED	
FILE No.	PROJECT No.	REG.	DRAWING No.		
10543-SK1	04529-0001	1	10453-SK1		

H-3081-1-1-24-07-06

CANCEL PRINTS BEARING PREVIOUS LETTER