

Appendix B

Road Safety Analysis

Malahat Hwy, LKI Segment 0319, km 0.8 to 20.5
 Sooke Lake Rd to end of Malahat Dr.
 HAS Crash Statistics 2000 - 2004

Background

- Data Obtained from Ministry of Transportation Highway Accident System of Police Reported Crashes
- Study period: January 2000 - December 2004 (5 year period)

Annual Statistics

Severity	YEAR					Total	Average
	2000	2001	2002	2003	2004		
Fatal	0	3	0	0	2	5	1
Injury	27	33	20	26	22	128	26
PDO	30	26	30	19	27	132	26
Annual Total	57	62	50	45	51	265	56

Road Conditions

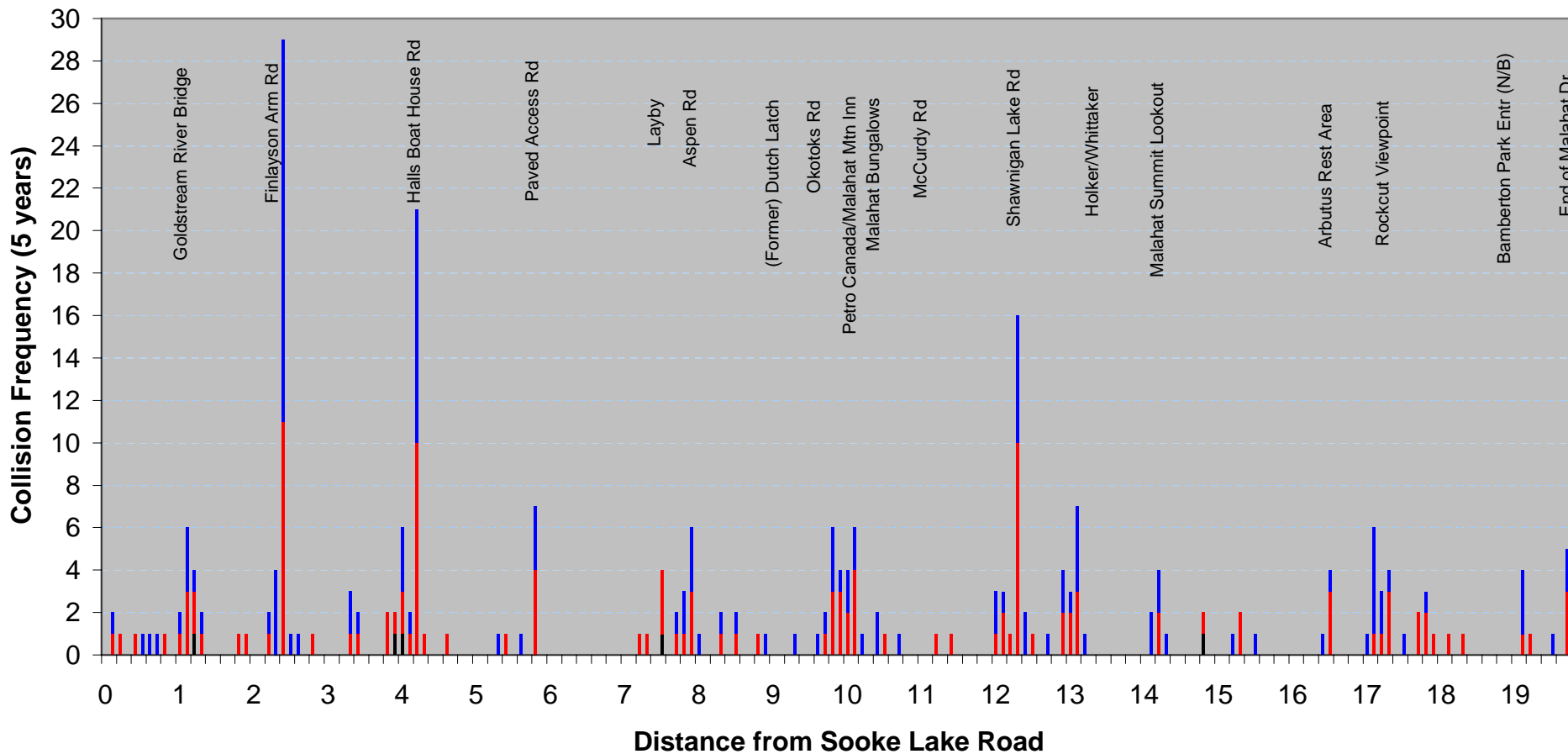
Road Condition	Inj/Fatal	All	% Inj/Fatal	% All
Dry	76	144	57%	54%
Wet	47	91	35%	34%
Ice	4	15	3%	6%
Snow	4	10	3%	4%
Slush	0	3	0%	1%
Unkno	2	2	2%	1%
	133	265	100%	100%

Vehicle Travel Directions (Vehicles 1 and 2 only)

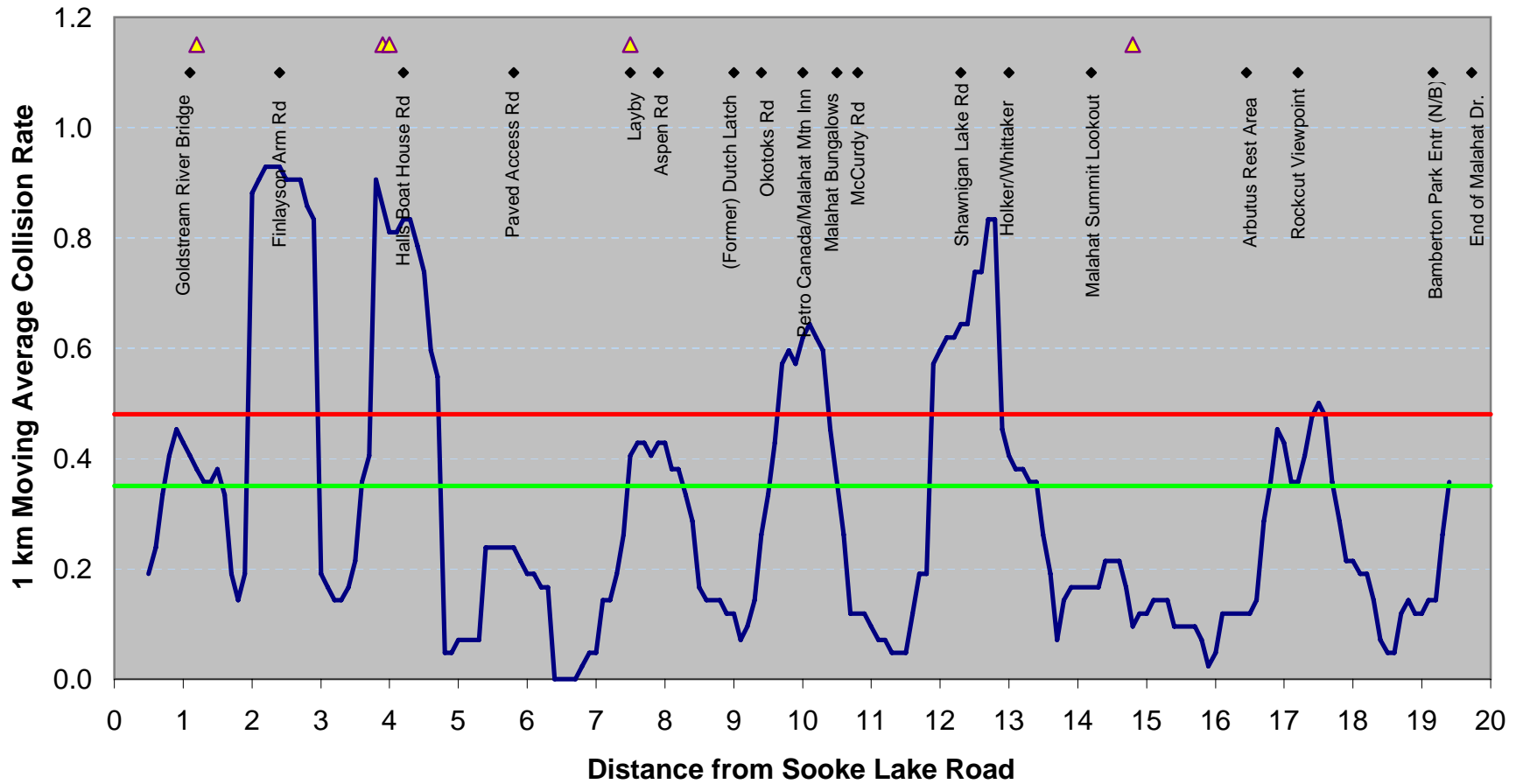
N	179	50.4%
S	163	45.9%
W	6	1.7%
E	7	2.0%
Total	355	100.0%

Highway 1 Collision Frequency (Jan 2000- Dec 2004)

■ Fatal Crashes ■ Injury Crashes ■ Property Damage Crashes



Highway 1 Collision Rate (Jan 2000- Dec 2004)

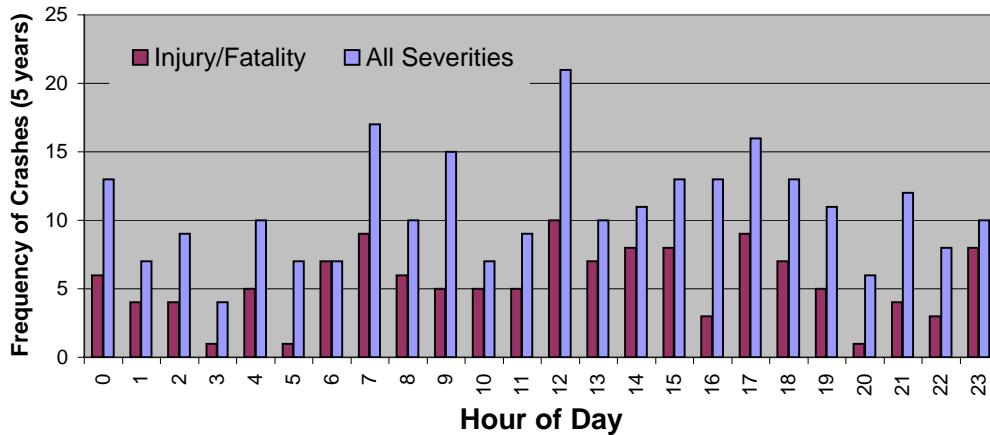
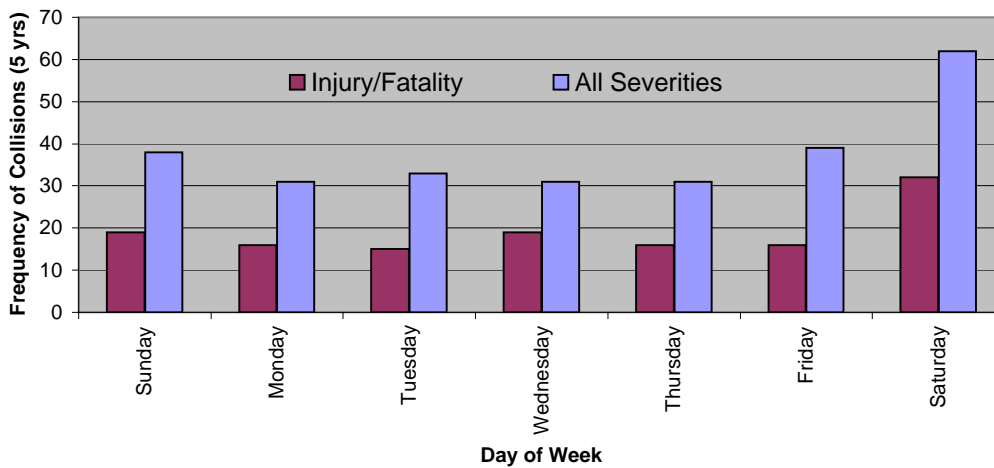
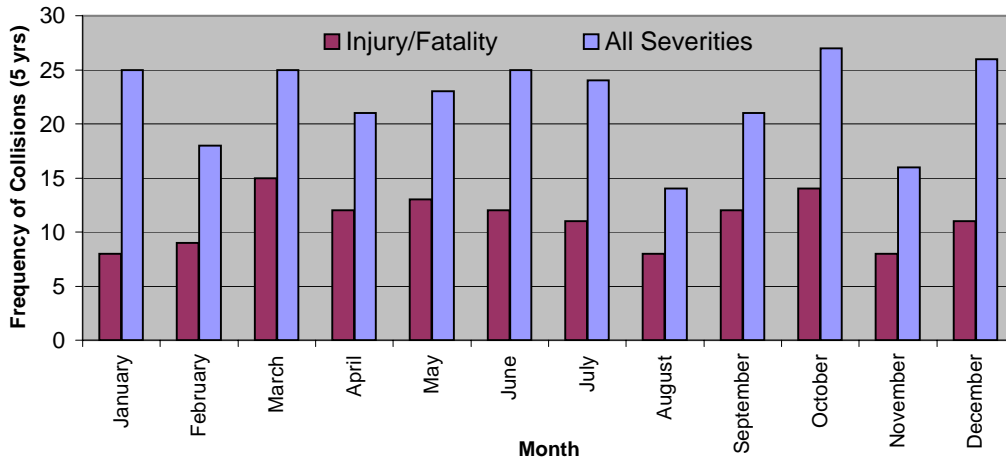


— Provincial Average Accident Rate - 0.48 a/mvk

— Malahat Accident Rate - 0.35 a/mvk

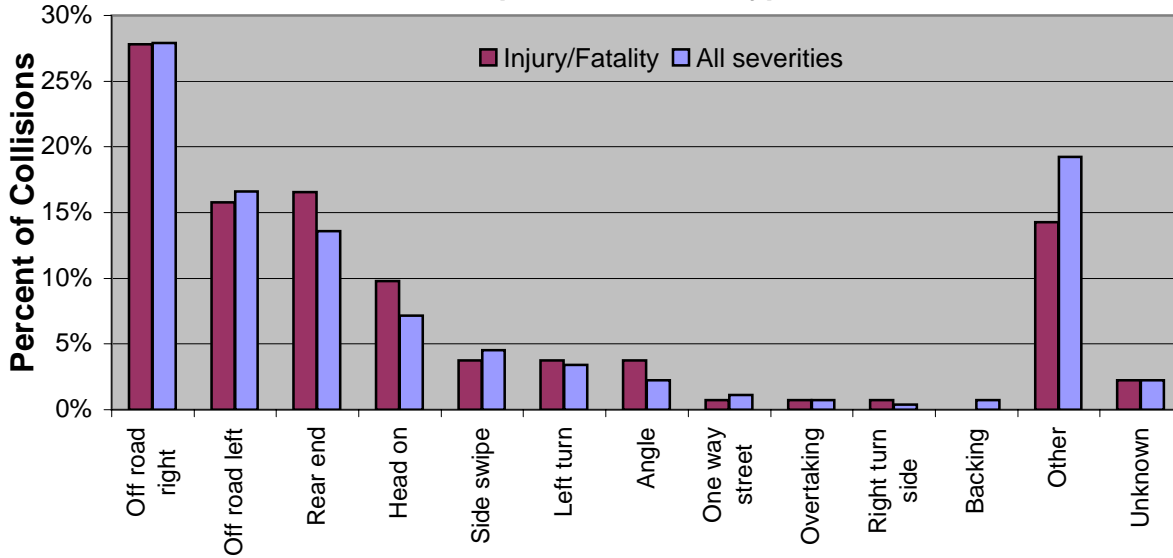
▲ Fatal Accident

Malahat Hwy, LKI Segment 0319, km 0.8 to 20.5
 Sooke Lake Rd to end of Malahat Dr.
 HAS Crash Statistics 2000 - 2004



Malahat Hwy, LKI Segment 0319, km 0.8 to 20.5
 Sooke Lake Rd to end of Malahat Dr.
 HAS Crash Statistics 2000 - 2004

Police Reported Collision Types



Top 12 Police Assigned 1st Contributing Factors for Driver 1

