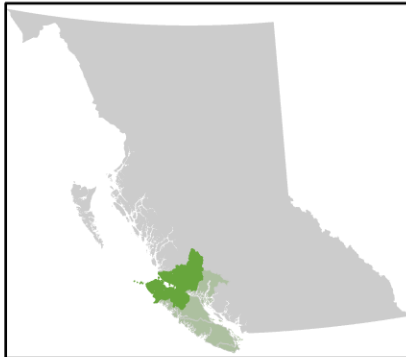


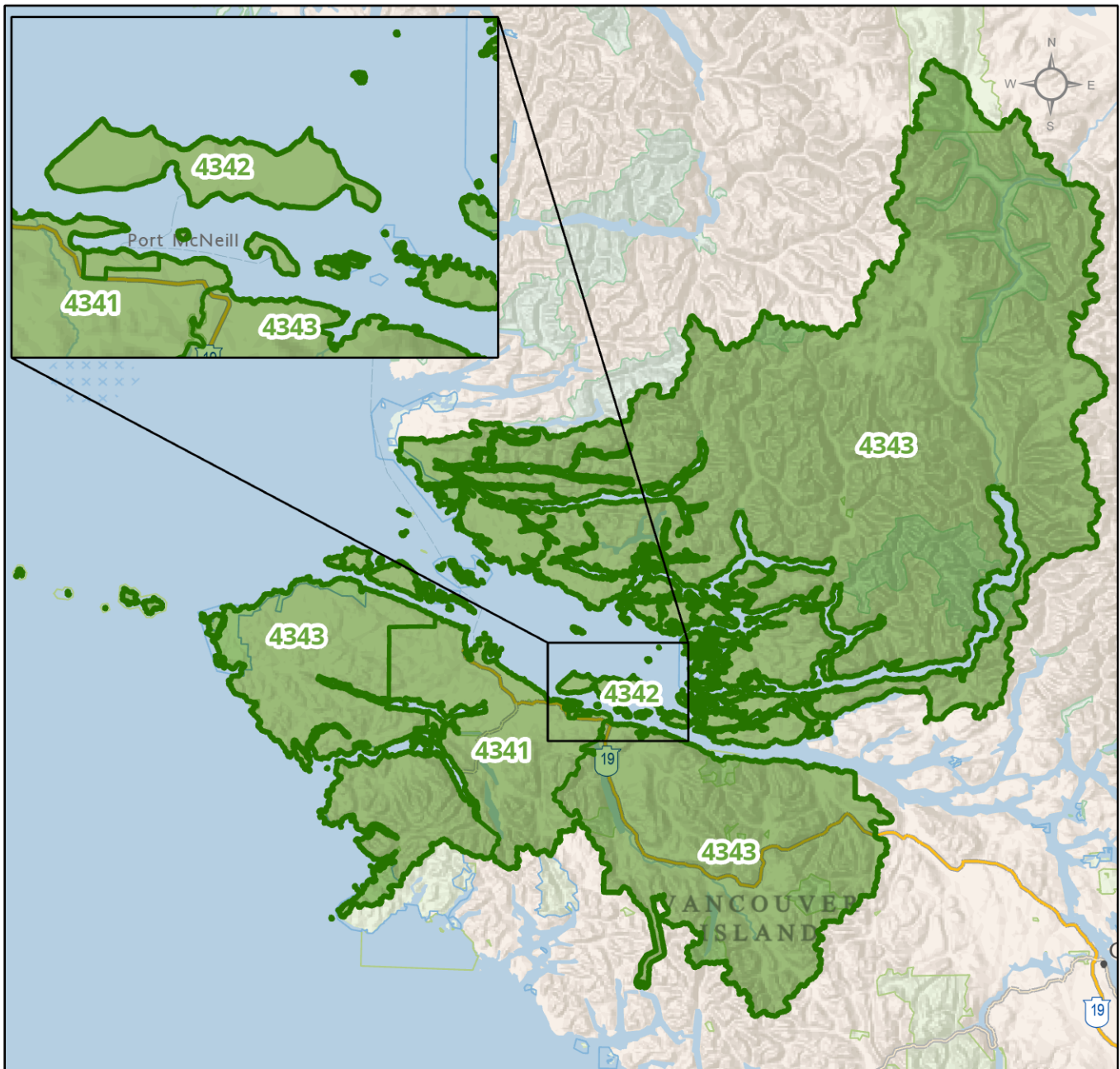
Local Health Area (LHA)

434 Vancouver Island North



Community Health Service Area (CHSA)

- 4341 Port Hardy/Port Alice
- 4342 Port McNeill/Sointula
- 4343 Vancouver Island North Remote



0 80 Kilometers 1:1,559,000 Ministry of Health, 2023
Health Boundaries Version 2022