

ILRR Quick Reference Guide Survey Parcel Fabric Data Reference Guide

Access the ILRR at: www.ILRR.ca

The ILRR is:

A spatially enabled integrated register of over 280 different types of Crown land interests and tenures, regulated uses, land and resource restrictions, and reservations (i.e. parks, mineral reserves).

In addition to the rights and interests, reference layers available in the ILRR include:

- Crown land parcels and private land parcels where available.
- Administrative boundaries including natural resource districts and provincial parks are available in the map viewer.
- Base map information including roads, water features, and map grids.

Why use the ILRR?

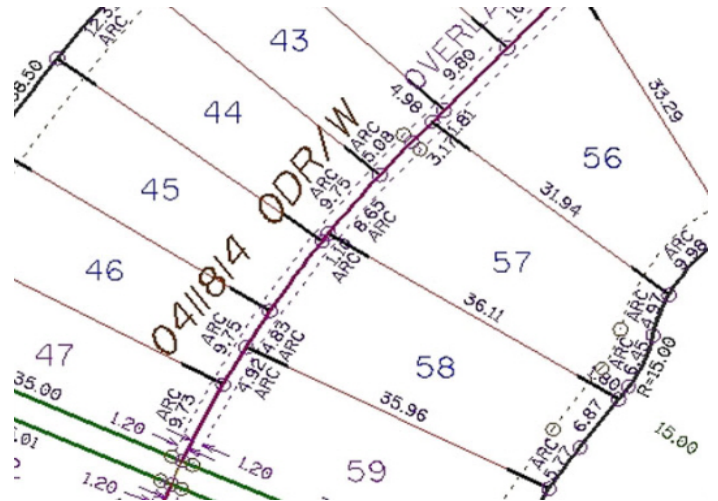
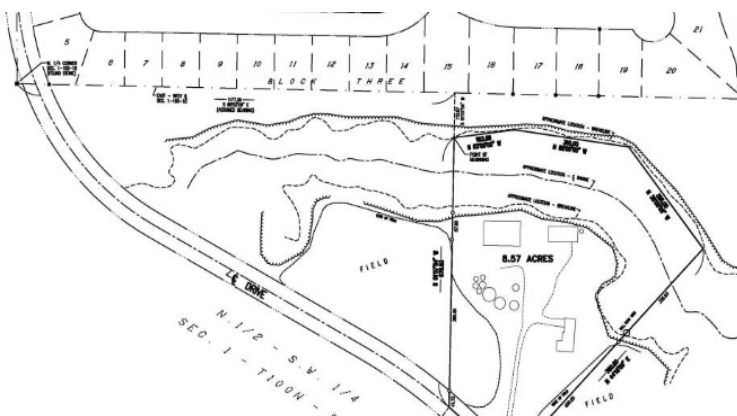
- Access comprehensive current land and resource information in minutes, instead of days or weeks.
- A real time acquirer takes interest information from a variety of natural resource sector Ministries and registers it in the ILRR (target within 30 minutes) allowing you to immediately view and status the interests against other requested and active interests.
- Determine the current ownership status of the land (Crown and private).
- Identify if further research may be necessary, and then use ILRR information to locate records in systems such as the British Columbia Geographic Warehouse (BCGW) for digital spatial data and resource information, GATOR for detailed Land Act and survey information and MyL TSA for information on private land.
- Identify potential land use conflicts.
- Supports:
 - land-use planning and treaty negotiations;
 - inter-agency referral processes;
 - applications for interests on land; and
 - emergency planning and response.
- Faster, more consistent decision making using common information.
- Reduced risk in decision making.
- Quickly generate queries, maps, reports, share reports with others, and get email notification if something changes on a specific interest.

Survey Parcel Fabric Interests Reference Information

Surveying is a method used to spatially identify land parcels before the designation of ownership. B.C.'s survey parcel fabric is an integrated and consistent digital map of the location, shape, extent and nature of land parcels in B.C. B.C.'s survey fabric consists of both Crown survey parcels and private survey parcels. This information is primarily provided by these two spatial layers:

Tantalis - Crown Land Layer

The Provincial government's Tantalis layer is a province-wide database supporting the administration of Crown land. Tantalis spatial data consists of a seamless fabric of current and historical Crown land survey data and Crown land tenure information (also called cadastral information) spanning the extent of British Columbia. It also includes several types of administrative areas (e.g. Land District, Regional District, municipalities, etc.) relevant to land disposition. Tantalis spatial data was compiled using coordinate geometry and referenced existing survey control and the Terrain Resource Information Management (TRIM) geographical data available at the time of compilation.



Integrated Cadastral Fabric (ICF) – Crown and Private Land Layer

The ICF is intended to represent the fabric of unique surface land parcels under Crown and private ownership. The ICF is being compiled by GeoBC of Ministry of Forests, Lands, Natural Resource Operations & Rural Development in partnership with Integrated Cadastral Information Society (ICIS). GeoBC maintains the ICF for about 60% of the land area of the province. The remainder is acquired from Local Governments. The ICF layer provides a province-wide coverage with the following surface land ownership classifications Private, Crown (Federal, Provincial & Municipal), First Nations and Unknown.

Use of These Layers

The ICF layer is available for the entire Province. However, most areas in the south of the Province are imported from Local Governments and may vary in quality and currency.

Contacts: ILRR Support

Toll Free (within BC): 1-866-952-6801
Within Victoria: 250-952-6801

E-Mail: NRSApplications@gov.bc.ca (to open a ticket)
NRSEnquiries@gov.bc.ca (to ask a question)

Contacts: Survey Parcel Fabric Interests Inquiries

For business questions regarding specific Survey Parcel Fabric interests displayed in the ILRR contact:

- Tantalis Gator inquiries: <https://www2.gov.bc.ca/gov/content/data/geographic-data-services/land-use/integrated-cadastral-fabric>
- ICIS and ICF inquiries: <https://www.icisociety.ca/services/>

ILRR Quick Reference Guide

Survey Parcel Fabric Data Reference Guide

Access the ILRR at: www.ILRR.ca

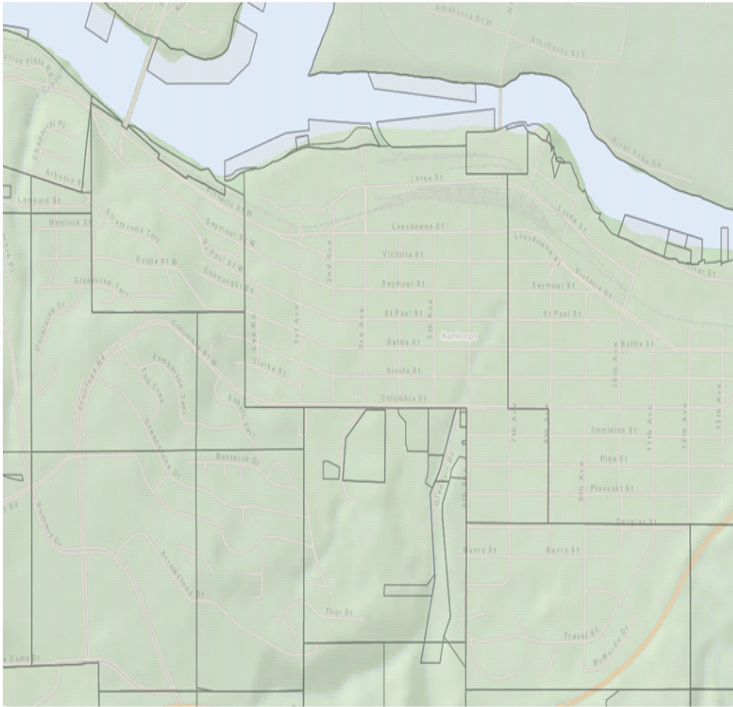
Survey Parcel Fabric Interests in the ILRR

The following interests can be found in the ILRR. There are over 280 interest types in the ILRR and the list provided is just a sample of what is available.

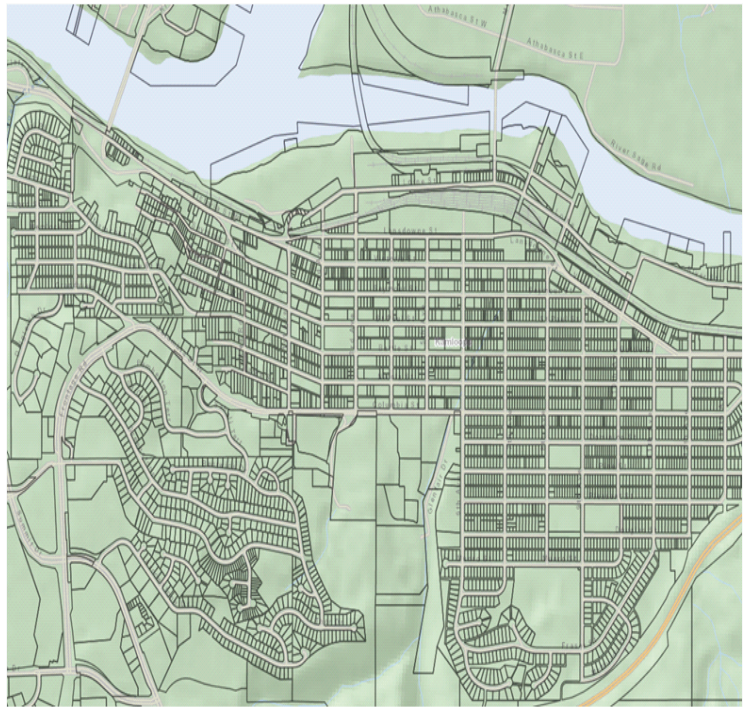
Survey Parcel Fabric - Tantalus	Tantalus Crown Land Parcels	Contains the spatial representation (polygon) of all active primary and subdivision parcels of land that are or have been within the authority of the B.C. Crown Land Registry.
	Crown Acquisition	Land which was under private ownership but which the Crown has since acquired.
	Land District	A district in B.C. used to group land parcels for surveys and legal description.
	Boundary (Municipal)	An incorporated city, district municipality, resort municipality, town or village.
	Crown Reversion	Land which was under private ownership but has reverted to Crown ownership.
Survey Parcel Fabric - ICF	Integrated Cadastral Fabric Private Parcels	The Integrated Cadastral Fabric provides a subset of the ICF attribute data for public viewing. This spatial dataset represents the structure of registered land parcels in the Province of BC. The dataset provides a continuous, non-overlapping fabric of private and crown-administered parcels which have been defined by various surveys (e.g. including Land Act and Land Title Act surveys). The attributes maintained for these parcels include the record identifiers of source systems (e.g. PID - Land Title Office database, PIN for Crown Land Registry database), and the following surface land ownership classifications: Private, Crown (Crown Federal, Crown Provincial, Municipal), First Nations, and Unknown.

Tantalus vs. ICF Example

Tantalus data around Kamloops, B.C.



ICF data around Kamloops, B.C.



ILRR Quick Reference Guide Survey Parcel Fabric Data Reference Guide

Access the ILRR at: www.ILRR.ca

ILRR Main Menu

Once the user logs into the ILRR the user will see the ILRR Main Menu. The main menu shows all of the functions available to the user to search for interests and rights in the ILRR application.

When working in the ILRR application, the left side of the page always displays your ILRR menu functions.

These options allow the user to jump to the different functions for accessing ILRR information or allow the user to return to the ILRR Main Menu.

A new **Public Report** has been added that presents a listing of interests over a particular area. This report will be useful to public users for tracking new authorizations / applications.

Query Interest Record

The Query Interest Record function allows the user to quickly locate a specific interest, record, or group of records based on a known ILRR Interest Identifier or Agency Record Identifier.

Example workflow:

- 1a. Select the **ILRR Interest Identifier** option and enter the ILRR Interest Identifier (example 89026), **or**
- 1b. Select **Agency Record Identifier** and then from the options presented select **Crown Land Tenures and Interests** (example Disposition Transaction SID 42496) and enter the appropriate interest identifiers.
2. Select the preferred display options in the **Generate Report Display Options** screen and click **Next** to display the **Report Results** screen. The **Report Results** window will open.

Map Inquiry

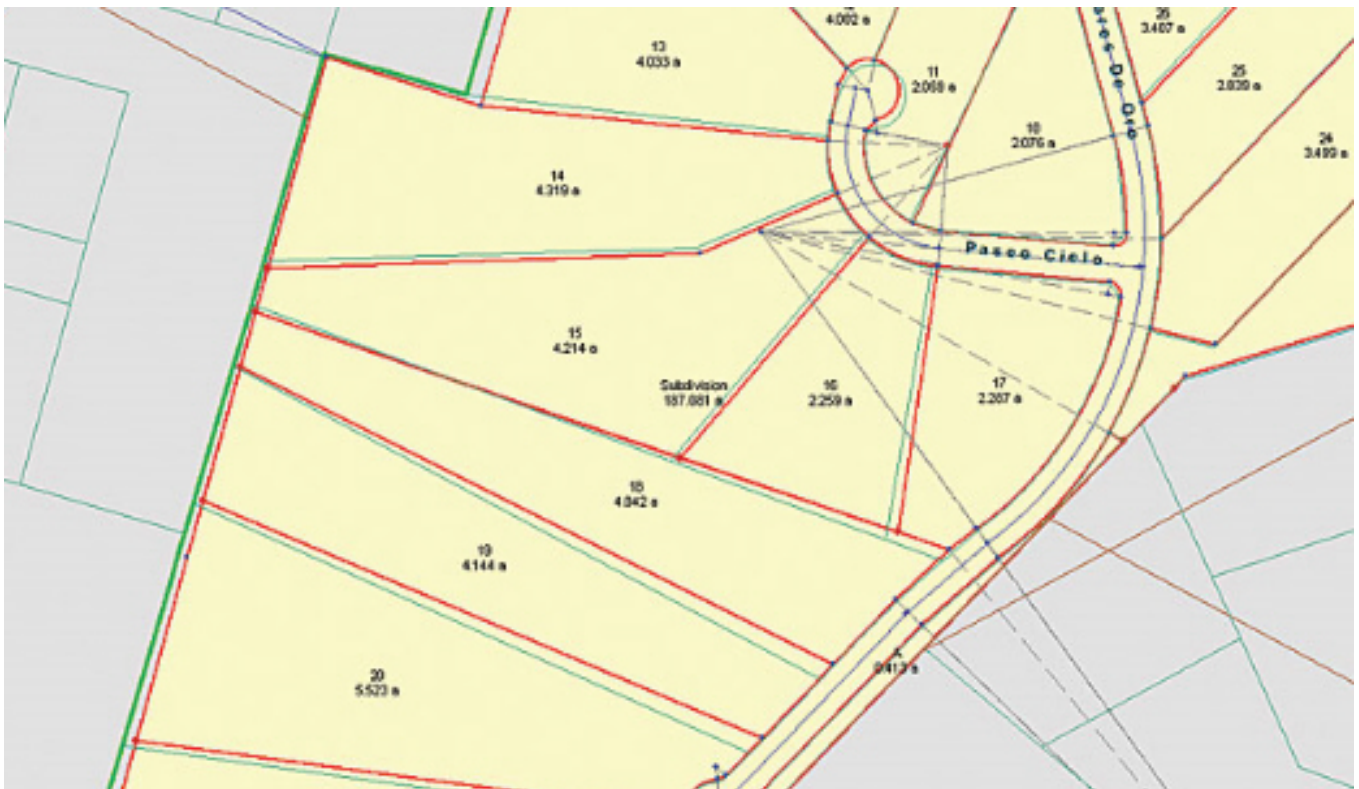
The Map Inquiry function utilizes the map viewer to determine existing rights and interests for a specific location. Using the map viewer you can spatially query interests, produce maps, or select an "area of interest" for a land status query.

The map viewer will also show you if there are any pending interests, requests, or restrictions for the area you are viewing.

Some map inquiry functions include:

- Access to information on over 280 different interests.
- The ability to turn on or off any specific layer such as an administrative boundary, survey parcel, or roads (i.e. personalize the layers that you are looking at).
- Enable clients to 'drill-down' and generate a list of interests at that point.
- The ability to import a shape file , select a polygon , or draw a polygon to create an AOI (area of interest) then accept the AOI and generate a status report.
- Access to information on private land (PID, JUROL, or legal description).
- Enable clients to print with your customized map view.

Functions described on the next page



ILRR Quick Reference Guide Survey Parcel Fabric Data Reference Guide

Access the ILRR at: www.ILRR.ca

Survey Parcel Search

The Survey Parcel Search function allows a user to quickly locate a Survey Parcel Type based on a private land Parcel Identifier (PID), a Crown Land Parcel ID Number (PIN), a Title Number (JUROL or BC Assessment Roll Number), or based on the legal description. The only difference between the Survey Parcel Search and the Legal Description Search within the Custom Status option is the Survey Parcel Search only allows the user to view the results of the search, where the Legal Description Search allows you to view the results AND select a survey parcel to be used as the AOI or location parameter in a Custom Status Query.

Example workflow:

1. Click **Survey Parcel Search** from the ILRR Main Menu.
2. Enter one of the Survey Parcel Types: **Parcel Identifier ID (PID)** (example 007410714), the **Parcel ID Number (PIN)** (example 8057540), the **Title Number** (example CA1112391), or the **Legal Description** (example District Lot 482).

Survey Parcel Search : Location Type - Legal Description - Land Title Subdivision Search Results

New Search 1 Land Title Subdivision(s) were found.

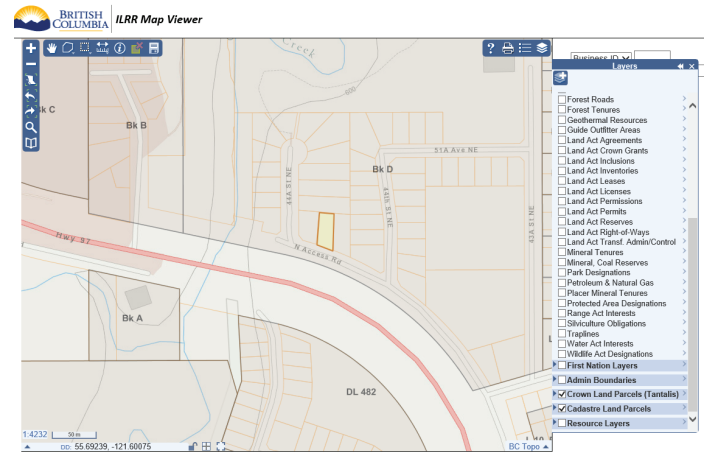
Select	LTO PID	Primary PIN	Row PIN	LTO	Owner/ Agency	Legal Description
<input type="checkbox"/>	007410701	8057540		PRINCE GEORGE	Private/	LOT 15 DISTRICT LOT 482 PEACE RIVER...

Click the **LTO PID** link to view the parcel details.

Survey Parcel Search : Location Type - Legal Description - Land Title Subdivision Search Results: Detail

Land Title Subdivision PID:	007410701
Title:	CA1112391
JUROL:	51400820070
Land Title Office:	
Owner:	Private
Agency:	
Primary Parcel PIN(s):	8057540
Right of Way PIN(s):	
Spatial Definition:	Yes
Legal Description:	LOT 15 DISTRICT LOT 482 PEACE RIVER DISTRICT PLAN 25968

Select the record by putting a check in Select field and click the **Map Viewer** link to see the parcel (shown as yellow) on the map.



Custom Status

Users can create a custom status query by selecting parameters to be defined from the left navigation menu, completing the parameter screen(s), and submitting the results. This query allows you to run a report using seven different parameters. You can define one or more of the parameters to refine your query and result set. The results of a successful query provide statusers, decision makers, and land planners with information to conduct preliminary status, identify potential conflicts and to make decisions on where rights can be issued or identify where restrictions are needed.

To create a custom status query:

1. Select **Custom Status** from the ILRR Menu on the left.
2. From the left navigation menu, select the applicable parameters for your custom status by clicking the parameter. The user can select as many or as few parameters for their custom search. Each of these parameters, are describe on the below.

Interest Type

Allows the user to choose which interest type(s) to be included in the query. These are categorized by the layer's folder shown in the map viewer.

Interest Agency

Allows the user to choose which interest responsible Ministry to be included in the query. These are the Ministries responsible for the interest which host the interest granting agencies.

Location

Allows the user to choose which location(s) you want included in the query. This can be a known feature, such as using the Legal Description Search which allows the user to search by parcel type (Primary, Crown Subdivision, Land Title subdivision or right- of-way), or to use the map viewer to create an AOI.

Term or Other Dates

Allows the user to choose the term or date(s) to be included in the query. This can be the Requested Date, the Term Start Date, the Term End Date, and/or the Interest Date.

Interest Holder

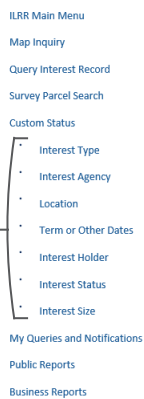
Allows the user to choose which interest holder(s) to be included in the query.

Interest Status

Allows the user to choose the interest status (request, active, inactive, obsolete or suspended) to be included in the query.

Interest Size

Allows the user to choose the interest size to be included in the query.



Custom Status : Parameter Summary

Parameter Summary

Use the navigation menu, located to your left, to select and/or edit the applicable parameters for your custom status query.

Once you have finished selecting your parameters, click the Submit button below to run your query.

Parameter updates will not be saved unless the Save Query function is performed.

Selected Parameters

Reset	Interest Type:	Defaults selected.
Reset	Interest Agency:	Defaults selected.
Reset	Location:	Defaults selected.
Reset	Term or Other Dates:	Defaults selected.
Reset	Interest Holder:	No parameters selected.
Reset	Interest Status:	Defaults selected.
Reset	Interest Size:	No parameters selected.

Reset All

Submit

Save Query

Create Overlay Report

Custom Status Parameter Summary screen shows all the selected and defined parameters and those which have been set to default.

If you wish to save this query (save the parameters), in the right navigation menu, click the **Save Query** link. You must click the **Submit** button before clicking the **Save Query** button.

If you wish to create an Overlay Report, in the right navigation menu, click the **Create Overlay Report**.

Click the **Submit** button to generate your report. If you receive an error when submitting, your query may not be adhering to the Query Validation Criteria.



The **Query Validation Criteria** can be found at

<https://www2.gov.bc.ca/gov/content/data/geographic-data-services/land-use/info/grated-land-resource-registry/custom-queries>

If you wish to reset one or any of the parameters, select the **Reset** button beside the parameter name(s). You can also reset all of the parameters by selecting the **Reset All** button at the bottom of the screen.