

USER GUIDANCE: ILRR Spatial Data Extract

What's New in ILRR release 9.0

Over the years the [Integrated Land and Resource Registry \(ILRR\)](#) has seen the addition of more information and has adopted many new functions to find data in the system.

The latest update to the ILRR system supports additional options to access registered interest spatial data in Shapefile and GeoJSON formats. This feature has been built into a new enhancement of a Common Web Map (CWM) map viewer and a reporting application referred to as the ILRR Reporter. The development of the ILRR reporter supports a more streamlined workflow and additional options to access data from the ILRR database.

ILRR Reporter (9.0)

The ILRR Reporter is a new application available to users of the ILRR. All current functionality of the ILRR will remain in place for the time being. When a user logs into the ILRR they will see the ILRR Reporter as below:

Select one of the following items to continue.

ILRR Reporter



A new lightweight application that provides a faster, more intuitive replacement for Map Inquiry, Business Reports, Public Reports, and Query Interest Record. Allows report download in new formats!

Map Inquiry

Select an area of interest using an interactive map tool and generate a status report.

Query Interest Record

Search for interests using an ILRR Interest Identifier or Agency Record Identifier and generate a status report.

Survey Parcel Search

Search for survey parcels using legal description parameters.

Custom Status

Build a custom status query to identify all interests that meet a set of parameters such as Interest Type, Holder, Size, Status and Location.

My Queries and Notifications

Save and share queries to generate status reports.

Public Reports

Generate a conflict and/or constraint report based on an ILRR Interest location, area of interest, shapefile or Geomark URL.

Business Reports

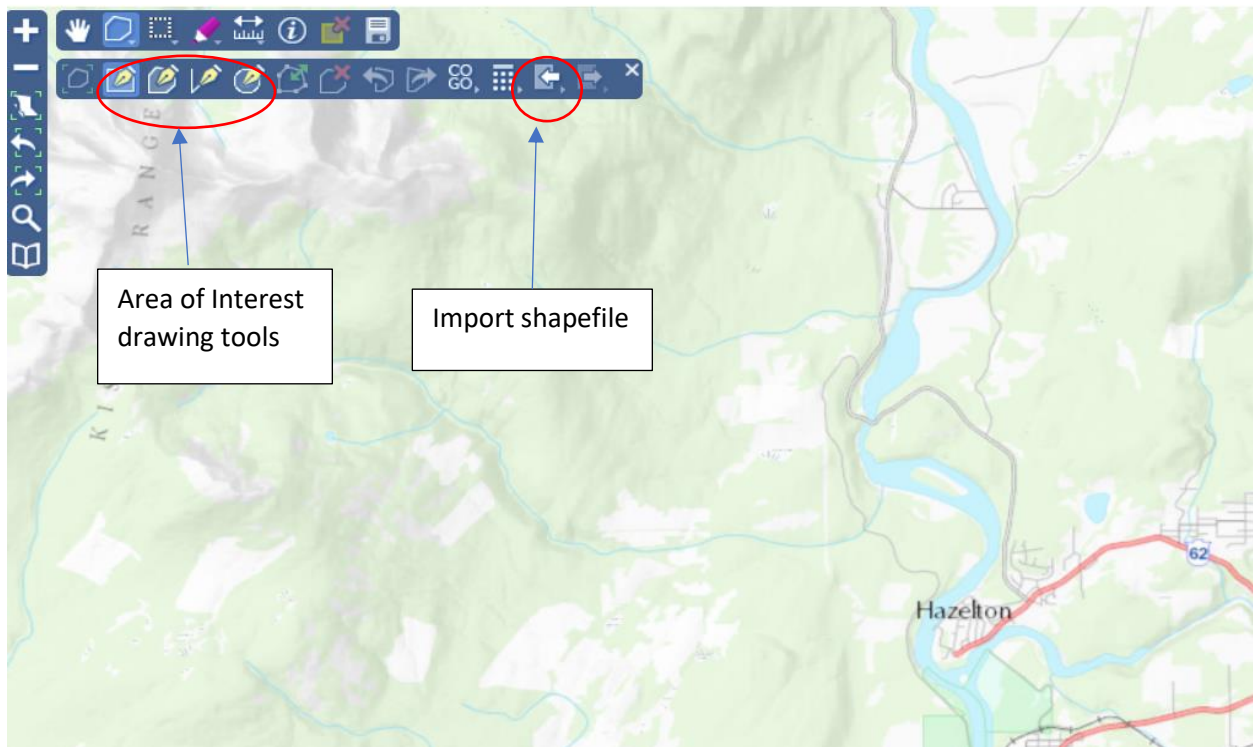
Access Line of Business Reports.

The new functionality included in the ILRR Reporter allows a user to run ILRR Interest and Business Reports using a map-based web interface. The ILRR Reporter runs all the same reports with download formats that were available in the "classic" ILRR with two key additions – the ILRR Summary/Detail reports are available for download in GeoJSON and Shapefile formats. These formats allow for the ILRR interest data to be used in subsequent analysis or mapping using a GIS.

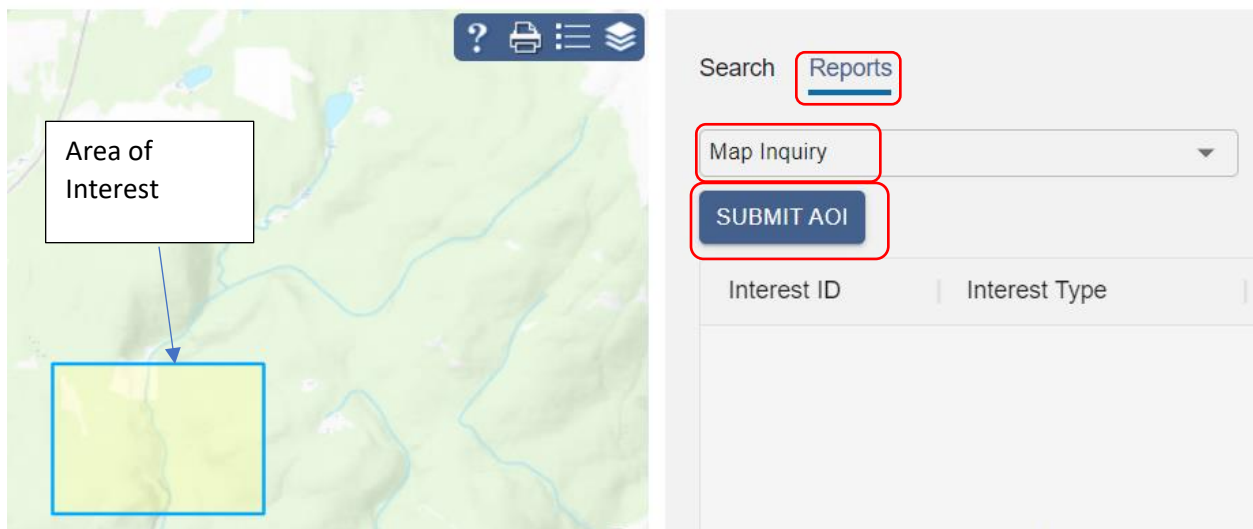
USER GUIDANCE: ILRR Spatial Data Extract

Process:

1. In the ILRR Reporter Application draw or import the Area of Interest in the map viewer
 - The ILRR Reporter will allow users to draw or import a shapefile Area of Interest (AOI) to produce a report of overlapping interests.



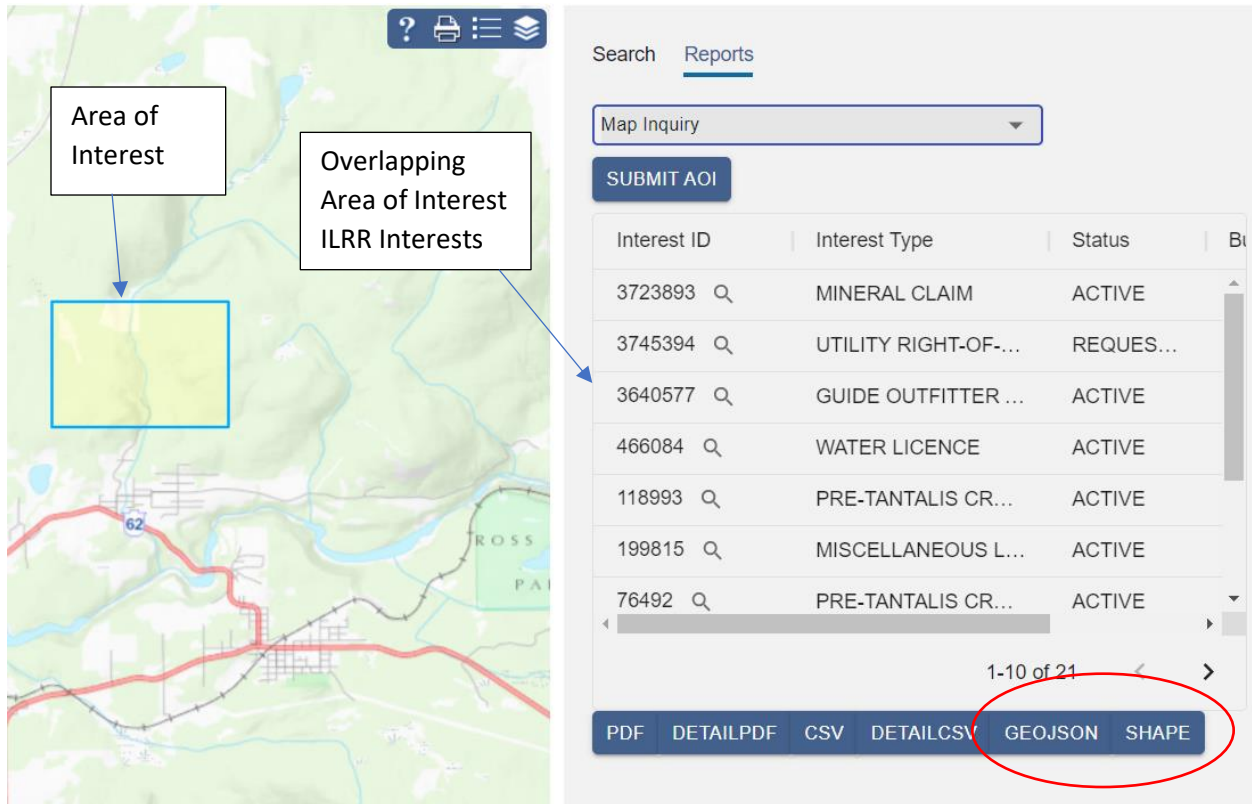
2. Once AOI is on the map viewer, select the "Reports" function, the Map Inquiry option and click the Submit AOI button. This function only works with the Map Inquiry option.



USER GUIDANCE: ILRR Spatial Data Extract

3. View report and download spatial files

- Overlapping interests will be listed beside map viewer
- If interested, click magnifying glass to see where various Interest types overlap the AOI
- To export spatial data of the overlapping Interests, select GeoJSON or Shapefile to download the files



The screenshot displays the ILRR interface. On the left, a map shows a yellow highlighted 'Area of Interest' and a larger yellow area labeled 'Overlapping Area of Interest ILRR Interests'. On the right, the 'Reports' section shows a table of interests. Below the table, buttons for 'PDF', 'DETAILPDF', 'CSV', 'DETAILCSV', 'GEOJSON', and 'SHAPE' are visible. The 'GEOJSON' and 'SHAPE' buttons are circled in red.

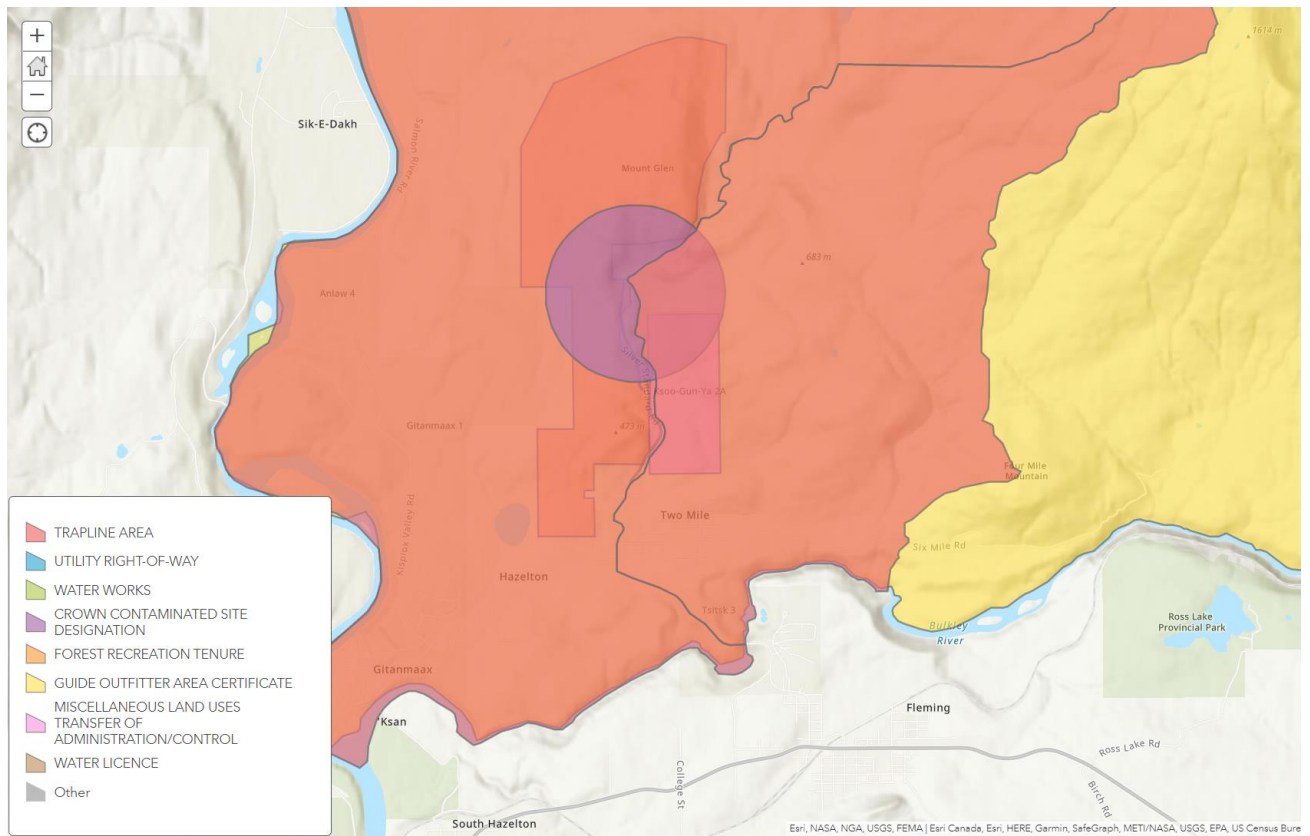
Interest ID	Interest Type	Status
3723893	MINERAL CLAIM	ACTIVE
3745394	UTILITY RIGHT-OF-...	REQUES...
3640577	GUIDE OUTFITTER ...	ACTIVE
466084	WATER LICENCE	ACTIVE
118993	PRE-TANTALIS CR...	ACTIVE
199815	MISCELLANEOUS L...	ACTIVE
76492	PRE-TANTALIS CR...	ACTIVE

USER GUIDANCE: ILRR Spatial Data Extract

4. Import Spatial File to GIS

- Save downloaded GeoJSON or Shapefile
- Import spatial file into your GIS of choice

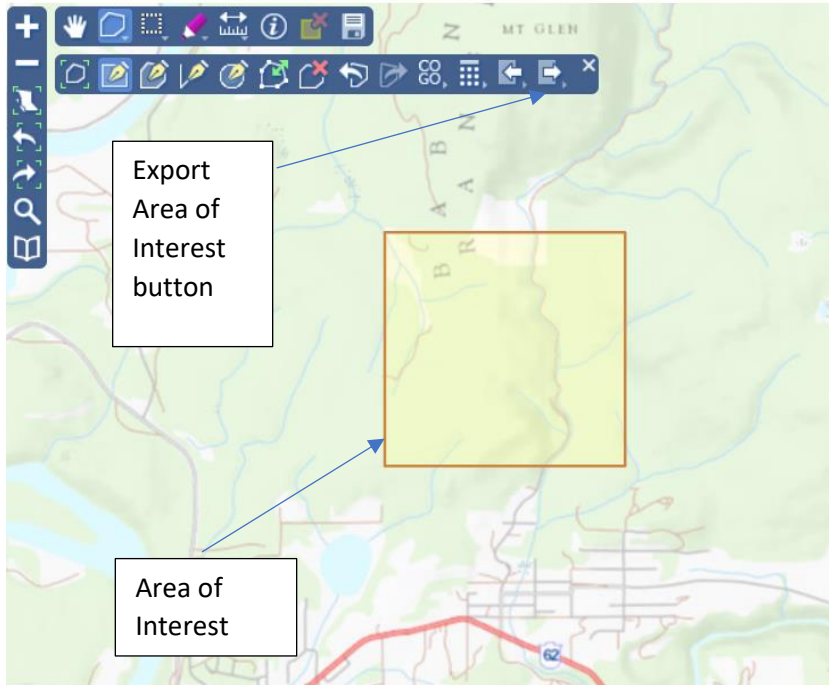
Example of overlapping ILRR shapefile in ArcGIS Online web map:



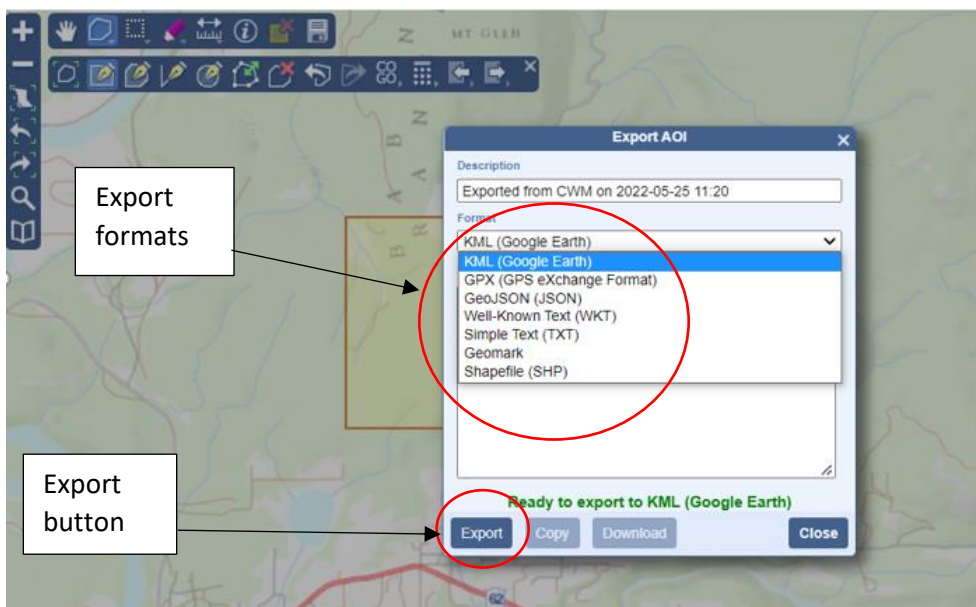
USER GUIDANCE: ILRR Spatial Data Extract

5. What about the AOI shape?

- At this time the ILRR GeoJSON and Shapefile download feature does not include the AOI shape
- However, users can separately export the AOI in multiple spatial formats using the Export AOI button



- Select export format using the drop-down menu and click the Export button
- Download AOI and import into your GIS



USER GUIDANCE: ILRR Spatial Data Extract

6. Who can access this feature?

- Users with a business BCeID and all provincial government staff have access to extract the ILRR GeoJSON and Shapefile.

Questions and Feedback

We welcome any questions and feedback users have on this feature or ILRR functionality. Any questions and feedback can be directed to GeoBCInfo@gov.bc.com